

BMJ Open Identifying the important social outcomes for childhood cancer survivors: an e-Delphi study protocol

Sarah Milner ^{1,2}, Richard G Feltbower,¹ Kate Absolom ³, Adam Glaser^{1,2}

To cite: Milner S, Feltbower RG, Absolom K, *et al.* Identifying the important social outcomes for childhood cancer survivors: an e-Delphi study protocol. *BMJ Open* 2022;**12**:e063172. doi:10.1136/bmjopen-2022-063172

► Prepublication history and additional supplemental material for this paper are available online. To view these files, please visit the journal online (<http://dx.doi.org/10.1136/bmjopen-2022-063172>).

Received 23 March 2022
Accepted 16 October 2022



© Author(s) (or their employer(s)) 2022. Re-use permitted under CC BY-NC. No commercial re-use. See rights and permissions. Published by BMJ.

¹Leeds Institute for Data Analytics, School of Medicine, University of Leeds, Leeds, UK
²Leeds Teaching Hospitals NHS Trust, Leeds, UK
³Leeds Institute of Medical Research, School of Medicine, University of Leeds, Leeds, UK

Correspondence to

Dr Sarah Milner;
s.milner@leeds.ac.uk

ABSTRACT

Introduction Optimising the health of childhood cancer survivors is important given the high long-term survival rate coupled with a significant late effects burden. Included within the WHO's definition of 'Health' are social outcomes. These are of interest given their impact on adult functioning within society, complex interactions with physical and mental health outcomes and potential for cross generational effects. Categories included within the definition of social outcomes are ill defined leading to potential gaps in research and service provision which could affect the ability of survivors to achieve their maximal potential. An e-Delphi study will be used to achieve expert consensus on the most important social outcomes for childhood cancer survivors to inform future research and ultimately, service provision.

Methods and analysis A heterogeneous sample of at least 48 panel members will be recruited across four groups chosen to provide different perspectives on the childhood cancer journey: childhood cancer survivors, health professionals, social workers and teachers. Purposive sampling from a UK, regional long-term follow-up clinic will be used to recruit a representative sample of survivors. Other panel members will be recruited through local channels and national professional working groups. Opinions regarding breakdown and relevance of categories of social outcome will be collected through 3–5 rounds of questionnaires using an e-Delphi technique. Open ended, 7-point Likert scale and ranking questions will be used. Each round will be analysed collectively and per group to assess inter-rater agreement. Agreement and strength of agreement will be indicated by a median score of 6 or 7 and mean absolute deviation from the median, respectively.

Ethics and dissemination Ethical approval for this study has been granted by Regional Ethics Committee 4, West of Scotland (ID 297344). Study findings will be disseminated to involved stakeholders, published in a peer-reviewed journal and presented at conferences.

INTRODUCTION

In recent decades, there have been enormous improvements in childhood cancer treatment leading to over 80% 5-year survival in the UK.¹ This, alongside an increasing incidence of childhood cancer globally,² means that more children are becoming adult survivors. There

STRENGTHS AND LIMITATIONS OF THIS STUDY

- ⇒ Delphi methods will be used to develop consensus on important social outcomes for childhood cancer survivors.
- ⇒ A purposive sampling strategy will be employed to recruit patients as members of the Delphi panel.
- ⇒ The study will be exclusively online to maximise flexibility for participants.
- ⇒ The study is only in English, which may prevent some patients taking part.
- ⇒ The methodology from this study may be used as a blueprint to investigate social outcomes in other childhood diseases.

are over 35 000 childhood cancer survivors in the UK³ and 500 000 across Europe.⁴

It is well recognised that childhood cancer and its treatment leads to long-term health consequences or 'late effects'. These impact the majority of survivors following treatment, with estimates ranging from 60%⁵ to nearly 90%,⁶ increasing with attained age. They encompass physical, psychological and social effects.⁷ More research is needed to explore long-term psychosocial outcomes in survivors.⁸

The WHO defines Health as a 'state of complete physical, mental and social well-being and not merely the absence of disease or infirmity'⁹ demonstrating the equal importance of positive social outcomes in promoting good health. This definition reinforces the inextricable links between physical, mental and social health and, therefore, the need to study social outcomes in childhood cancer survivors to promote the best health possible in this population.

'Social outcomes' is a broad term and because a number of its likely constituents are subjective in nature, it is difficult to accurately categorise. It could include the social determinants of health—the conditions in which people are born, grow, live, work and age¹⁰ or 'a diverse set of social capacities linked to personal functioning and functioning in

social structures such as the labour market, social groups and society'.¹¹ These are helpful definitions and provide a platform to consider 'social outcomes', but lack a meaningful breakdown of the domains the term should contain.

Current knowledge

There is not an appreciable body of work to generate a consensus definition, or comprehensive understanding of the term 'social outcomes' for childhood cancer survivors.

Current research is weighted towards educational and occupational outcomes. These are recognised as key components of normal social functioning and are easier to quantify.

Multiple studies including systematic reviews have found childhood cancer survivors experience worse educational outcomes than the general population, specifically in those with central nervous system (CNS) disease or following cranial radiotherapy (CRT).^{12–18} There are higher rates of unemployment, particularly unemployment due to disability and lower net salary among survivors and again, specifically those with CNS disease or following CRT.^{16 19–25}

Childhood cancer can have a negative impact on social relationships including friendships and intimate relationships.^{26 27} Survivors have lower rates of marriage or cohabitation than the general population^{28–32} and social isolation may be a problem following treatment.³³ Little is known about more nebulous areas such as impact on community life or autonomy.

Other chronic diseases of childhood such as congenital heart disease, type 1 diabetes, asthma and epilepsy similarly lack a clear breakdown of categories of relevant social outcomes yet also exhibit deficits in areas including education, occupation and relationships.^{34–37}

To date, research demonstrates potential deficits in social outcomes experienced by childhood cancer survivors, emphasising a need to better understand which are most important in order to guide future research and, ultimately, finite service provision and patient support.

Objective

The objective of this work is to conduct an e-Delphi study to reach expert consensus on the most important social outcomes for childhood cancer survivors.

METHODS

This study will be conducted using an e-Delphi method. The Delphi method has been used in many health research contexts^{38–40} to determine the extent to which experts, stakeholders or both agree with each other about a given issue and, via multiple rounds of questionnaires, achieve a consensus opinion.³⁸

There has been some criticism of the lack of clarity around how Delphi processes are conducted,⁴⁰

highlighting the importance of making methodological processes and protocols openly available.

Given that there is no indication of what the most important social outcomes for childhood cancer survivors are and that this research problem would benefit from collective, subjective judgement, a Delphi study is an ideal technique as it brings together the views of a variety of stakeholders and experts.⁴¹ Conducting the study online should improve access and data collection, while reducing the carbon footprint compared with other methodological approaches.

Three to five rounds of e-questionnaires will be administered anonymously to participants via OnlineSurveys (www.onlinesurveys.ac.uk). These will contain suggested categories of social outcomes. The rounds will use 7-point Likert scales to evaluate level of agreement, alongside free text boxes. Between each round, the results will be quantitatively and qualitatively analysed in order to produce the next questionnaire. Resulting data at the end of the rounds will be brought together to devise a consensus list of important social outcomes for childhood cancer survivors. Figure 1 provides an overview of the study.

Development of the Delphi round 1 questionnaire

The first-round questionnaire was developed following a scoping review of PubMed, Web of Science and Embase databases for articles using the follow strategy: (child OR childhood OR children OR p?ediatric) AND (cancer OR neoplasm OR tumo?r OR malignancy OR malignant OR leukaemia) AND (survivor) AND ("social outcome*" OR "social health").

Further searches were performed looking in more detail at areas found during the initial search. Following this, a theoretical set of categories was developed by the research team which encompasses clinicians with expertise in the care of children with cancer and long-term survivorship and health service researchers. A survivor also contributed. These categories are: education, independence and autonomy, work and finances, relationships, community life and lifestyle.

Categories were broken down to increase granularity and seek better understanding of what aspects of each potential category are important. As an example, education is further broken down into questions including the importance of: Receiving any education, completing school up to age 18 (the statutory age to which individuals must remain in education in the UK) and being able to complete higher education.

Patient and public involvement

A childhood cancer survivor contributed to the development of the pilot questionnaire. This underwent cognitive testing with patient and professional groups alongside a lay individual to help identify any ambiguities.⁴² This led to significant question refinement. It also demonstrated that professional participants were likely to only consider themselves despite being asked to think in the context of the childhood cancer survivor. For this reason, each

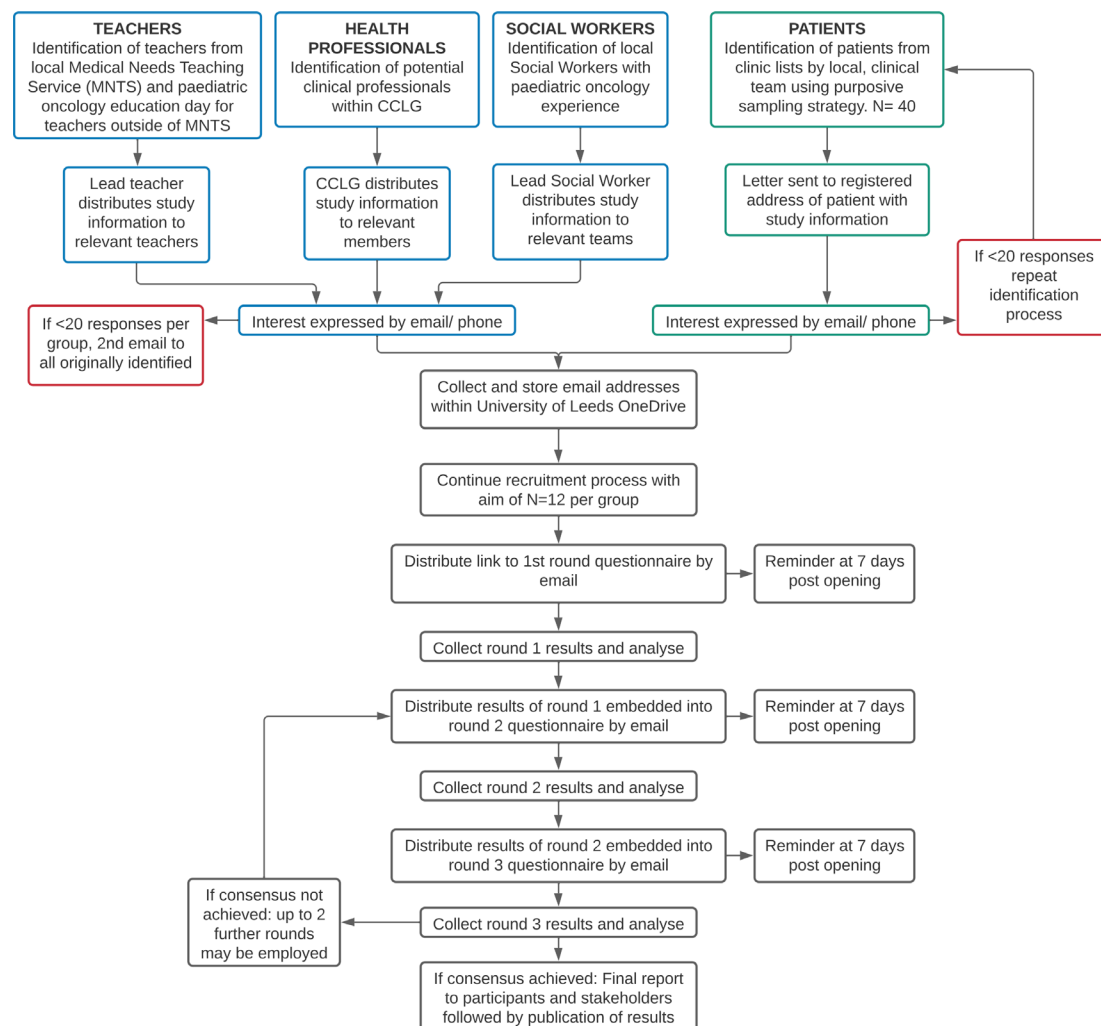


Figure 1 Flowchart showing overview of the study process. CCLG, Children's Cancer and Leukaemia Group.

question will be put to the participants twice- initially for consideration of the importance of the item for the general public and then for survivors. This structured approach was found to better encourage broader consideration of the context.

Participants

The study aims to recruit a heterogeneous sample of patients and professionals. The professional group will consist of paediatric oncology doctors and nurses, teachers, and social workers with experience of caring for young people living with and beyond cancer.

There is no set, standard sample size for a Delphi panel. Suggestions include a minimum of 12 panel members in total⁴³ or 10 per area of expertise.⁴⁴ The study aims to recruit approximately 12 participants per group (12 patients, 12 health professionals, 12 teachers and 12 social workers), and therefore, 48 participants in total. See table 1 for eligibility criteria for all groups.

If >20 individuals respond for any group during recruitment, it will be regarded as full and all non-responders will be notified. A response rate of 75% per round is required

to maintain validity and reduce withdrawal bias.³⁸ Consequently, this will be monitored.

Patient sample

Patients will be recruited to encompass a range of diagnoses as defined by the International Classification of Childhood Cancer, third edition.⁴⁵ Diagnoses will be grouped into: leukaemias, CNS tumours and other solid tumours.

Potential patient participants will be identified from the long-term follow-up (LTFU) service at Leeds Teaching Hospitals Trust (LHT), a regional children's cancer principal treatment centre (PTC) in northern England. The LTFU service comprises approximately 1500 patients of whom 800 are over 18 years old (up to 65 years old).

Assuming up to a 70% rejection/no response rate, invitations will be sent to 40 potential patient participants using a purposive sampling strategy to encourage recruitment of a representative sample of 12 patients. Table 1 displays the eligibility criteria.

Table 1 Eligibility criteria for patient and professional samples

Eligibility criteria	
Patients	Professionals
Cancer diagnosis <18 years with diagnosis as defined by the ICCC-3	Career paediatric oncology doctors or nurses
Alive and age 18 or over at the time of study	Primary or Secondary school teacher from public or private schools with experience of teaching children with a cancer diagnosis
Five years or longer elapsed since completion of treatment	Social workers with experience in paediatric oncology
Able to read, understand and write in English	
Able to complete using computer or mobile device	Able to complete using computer or mobile device
Able and willing to take part, following provision of appropriate information and consenting via the first-round questionnaire	Able and willing to take part, following provision of appropriate information and consenting via the first-round questionnaire
United Kingdom resident	United Kingdom resident
ICCC-3, International Classification of Childhood Cancer, third edition.	

Professional sample

The study will recruit health and non-health professionals whose work is relevant to social outcomes: doctors, nurses, teachers and social workers looking after children with cancer (table 1). Doctors and nurses were chosen because of their acute caring responsibilities during diagnosis and their role in longer-term care in which the social effects resulting from treatment become more apparent.

Health professionals will be recruited by surveying members of the Children's Cancer and Leukaemia Group (CCLG), the professional organisation for individuals caring for young people with cancer across the UK.⁴⁶ Social workers will be recruited at the regional children's cancer National Health Service (NHS) PTCs in Leeds and Sheffield (the two main treatment centres for children with cancer in Yorkshire, England) via the social work service for paediatric oncology. Teachers will be recruited

through the Leeds Medical Needs Teaching Service and attendees of a local teachers' workshop which supports and provides information to those teaching children being treated for cancer in Leeds. Recruiting teachers in this way ensures that those involved will have experience of teaching a child or young person with cancer.

Recruitment

Patients

Potential patient participants will be identified from clinic lists for the LTFU service at LHT.

Clinic lists will be obtained for all patients attending medical or nurse-led clinics in person or virtually from 1 January 2021 onwards. Starting at 1 January 2021, the clinical team will identify patients in date order using a purposive sampling strategy (table 2) until a total of 40 patients have been identified. This ensures a range of diagnoses and age groups are approached. The proportion of patients for each disease group are derived from the UK incidence rates for childhood cancers: leukaemias 31%, CNS tumours 25%, other groups including lymphomas 44%.⁴⁷ The 18–29 years old group make up 50% of the patients as their experiences are likely to be most representative of those coming through treatment into LTFU.

A letter will be sent to the patient's registered address by the clinical LTFU team explaining the purpose of the study and inviting them to take part. The team will also note age at diagnosis for future description of the sample. If there is a less than 50% response rate within 14 days, the sampling strategy will be repeated starting at the next patient, in date order from where the previous sample was completed.

If there are insufficient responses using this method, a member of the clinical team will approach patients directly when they attend the LTFU clinic.

Professionals

Convenience sampling will be used for all professional groups to approach maximum numbers of individuals and increase chances of recruiting the desired number of participants. Clinical professionals: Members of the CCLG will be approached via the Late Effects special interest group. The CCLG will distribute information about the study and invitation to take part on behalf of the study team. Social workers with paediatric oncology experience have been identified in Leeds and Sheffield

Table 2 Sampling strategy for patient group sample

	Age 18–29 years		Age 30 years or over		Total
	Male	Female	Male	Female	
Leukaemias	3	3	3	3	12
Central nervous system tumours	2	2	2	2	8
Other groups, including lymphomas	5	5	5	5	20
					40

by their managers. They will distribute email invitations to take part. Similarly, managers from the local Medical Needs Teaching Service will approach their staff, all of whom have experience educating children with cancer. A presentation will be given at the teacher's workshop inviting attendees to participate.

Letters to patients and emails to professionals will contain a participant information sheet (see online supplemental file 1) detailing the rationale and objectives of the study, what taking part will involve and information on confidentiality and ethical approvals. A variety of methods for registering interest are provided including dedicated email, telephone line and QR code generating an automatic email. Any individual wishing to take part contacts the study team who will provide further information and collect an email address for survey distribution.

Further patients or professionals may be recruited if they present themselves following interaction with those already registered, provided they meet the eligibility criteria.

Study procedure

Recognised key components of the Delphi method^{41 48} including: (1) use of an 'expert' panel, (2) anonymity of panel members, (3) iterative rounds of survey and feedback, (4) controlled feedback at each round and (5) iteration until consensus is achieved will be followed throughout the study. The anonymity component is particularly important in this study as it allows all individuals to be heard equally. Otherwise, for example, there is concern patients may not wish to contradict professionals.

E-consent will be taken at the beginning of the first-round. Involvement in subsequent rounds will be assumed as ongoing consent. Participants will only be able to proceed to the first questionnaire once consent is given.

All participants will be invited to complete each round of the study by email with a link to Online Surveys⁴⁹ unless they explicitly withdraw from the study or evidence this by not completing a round. If participants withdraw from the study, attempts will be made to ascertain why. Responses from earlier rounds will be kept unless explicitly asked to remove.

Participants will be given 2 weeks to respond to each questionnaire with an initial reminder being sent to non-responders 1 week after the round opens. There will then be 2 weeks for analysis. As a result, each new round will open 4 weeks after the previous round. There will be flexibility in this if low responses prove to be a problem.

Round 1

E-consent, basic demographic information including ethnicity, gender and age alongside participant group will be collected.

Participants will be asked to use a 7-point Likert scale to rate whether listed categories of suggested social outcomes are important for (1) childhood cancer survivors and (2) the general public. This is necessary to ensure that the two groups are considered separately.

EDUCATION

This section looks at whether education is or has been important.

How important is it to receive an education? This is being able to go to school, college and university for example.

This part of the survey uses a table of questions, [view as separate questions instead?](#)

For the general adult population?

	1	2	3	4	5	6	7	
Not at all important	<input type="checkbox"/>	<input type="checkbox"/>	<input type="checkbox"/>	<input type="checkbox"/>	<input type="checkbox"/>	<input type="checkbox"/>	<input type="checkbox"/>	Very important

Please add any reasons for your rating

For adults who had cancer as a child?

Please don't select more than 1 answer(s) per row.

Please select at least 1 answer(s).

	1	2	3	4	5	6	7	
Not at all important	<input type="checkbox"/>	<input type="checkbox"/>	<input type="checkbox"/>	<input type="checkbox"/>	<input type="checkbox"/>	<input type="checkbox"/>	<input type="checkbox"/>	Very important

Please add any reasons for your rating

< Previous

Next >

Figure 2 Screenshot example first round question as it appears on www.onlinesurveys.ac.uk.

7=very important and 1=not at all important. **Figure 2** shows an example question as seen on Online Surveys. See online supplemental file 2 for the complete list of round 1 questions.

Free-text boxes will be provided to allow participants to explain their decisions and volunteer other areas they think are relevant but have not been suggested.

Round 2

The responses from round 1 will be collated and analysed. Domains where there is consensus to include or exclude will be identified. Results will be fed back to panel members for comments. Categories not meeting criteria for consensus will be represented to the group alongside the results with the Likert scale as above. Any newly identified categories will be suggested to the group.

Round 3

Responses from round 2 will be collated and analysed. This will again be fed back to the panel with particular attention to areas where consensus has not been achieved. Participants will be asked if they wish to change any opinions based on the analysed feedback from the rest of the group. Participants will then be asked to rank the chosen social outcomes in order of perceived importance from highest to lowest.

If consensus has not been achieved at the end of round 3, up to two further iterations may take place for a maximum of five rounds. At the end of the final round, participants will be notified that no further rounds are required and thanked for their involvement. The study team will undertake final analysis to identify a list of the most important social outcomes for childhood cancer survivors.

ANALYSIS

All participant groups will be analysed both independently and together. There are no conclusive guidelines for establishing consensus in Delphi literature.^{38 50}

Importance of suggested social outcomes will be measured using the seven point Likert scale. Median scores and strength of agreement will be calculated.

Criteria to include a suggested outcome:

- ▶ Median value ≥ 6 .

Criteria to exclude a suggested outcome:

- ▶ Median value of ≤ 2 .

Strength of agreement will be assessed using mean absolute deviation from the median. Suggested outcomes not meeting criteria to include or exclude will be represented in round 2 alongside the qualitative feedback (inclusive of any further suggested categories) and median scores for each category. Each score will be calculated overall and according to participant group, age, gender and ethnicity.

To identify themes in free-text question responses, qualitative content analysis⁵¹ will be undertaken at each round and presented to participants in the subsequent round. Results will be reviewed by the whole study team to ensure quality is maintained. From round 1, any new categories emerging from the qualitative feedback will be presented alongside categories not achieving consensus.

In the third round, ranking questions will be assessed. Kendall's W will be used to determine concordance with a coefficient value of 0.7 or greater indicating strong agreement. Inter-rater agreement within and between groups will be assessed using an appropriate statistic such as kappa.

ETHICS AND DISSEMINATION

Ethical approval has been granted by the NHS Health Research Authority's Regional Ethics Committee 4, West of Scotland (ID 297344). This does not include third party sharing of the data collected. The study will be conducted

in accordance with the approved protocol. On completion of the study, results will be fed back to involved stakeholders and then submitted for conference presentation and peer-reviewed journal publication.

DATA MANAGEMENT

Personal data (names, postal addresses and/or email addresses) will only be collected for the purposes of approaching potential participants, sending out links to the survey and sending out reminders. The names and addresses of potential patient participants will be stored in an encrypted, password-protected file within NHS cloud storage so that they stay within the NHS's secure data environment. Once potential patient and professional participants have made contact with the study team, their email addresses will be stored in an encrypted, password-protected file within University of Leeds secure cloud storage and data within the NHS will be destroyed.

Data from the study will be downloaded from Online-Surveys in a pseudonomised format and stored within university cloud storage. On completion of the study, all data will be kept securely for 5 years at the University of Leeds before being destroyed in line with University guidance. Personal data will be destroyed securely 12 months after completion of the study.

DISCUSSION

Delphi studies are well used in health research, particularly in areas of limited research and/or to explore areas with controversy or lack of clarity. This makes it an ideal methodology for establishing the important social outcomes for childhood cancer survivors. There is significant value in employing the Delphi approach and when used correctly, with rigorous, transparent methodology, it can contribute to increasing knowledge across many areas of health science. However, the lack of clear guidelines around its use, reporting standards, definition of consensus and the numerous modifications to the original method leave it open to criticism.^{38 41 52} Improved standards of reporting the methodological approach is important so that results can be interpreted with clarity and appropriate caution. Publishing the protocol for this study should help facilitate this.

Choosing the appropriate composition of the panel will strongly affect the results.^{38 50 52} For this work, the term 'expert' was considered broadly with attention given particularly to groups with differing expertise relevant to social outcomes, for example, education. A decision was made to restrict the study to professionals working with children during their treatment rather than those who might only encounter adult survivors. It is hoped that future work will build on this study and include those encountering adult survivors such as within the job market. Including a broader range of healthcare professionals such as occupational therapists would be ideal, but the numbers working specifically within paediatric

oncology across the UK are small and it would be impracticable to approach all PTCs and NHS service providers for this study.

Study participation is restricted to English language speakers within the UK. This may risk missing views of some patients within the UK and could limit generalisability across other countries. Limited time and resources available preclude an international study at present. However, it is hoped that this study generates useful information which can be used as a foundation for further work in the UK and other countries. Findings will be shared with national and international groups to stimulate and develop further work in this area.

Key topics missed in the first-round questionnaire are not easily covered in later rounds. There is additional risk of ambiguity and differing interpretation of the questions among panel members which can distort results. In an attempt to combat this, an extensive literature search was undertaken to provide a clear basis for the first-round questions. These were reviewed and refined by individuals meeting eligibility criteria. Space for qualitative comments is built into each question to generate further ideas and identify overlooked areas.

Delphi studies self-select motivated individuals with strong opinions on the topic, particularly over successive rounds, risking bias.⁵⁰ A sampling strategy is in place in to obtain a representative patient sample. Consideration was given to a further breakdown of the patient group by treatment type, stage at diagnosis and relapse alongside stratifying by index of multiple deprivation but numbers are too small to make this practically possible and they would remain liable to self-selection.

As a questionnaire based study, there is high risk of non-response, increased by the multi-round approach. Keeping participants engaged, feeling they are partners within the study and being persistent with follow-up of non-responders are key to retaining participants.^{38 50} The recruitment process requires potential participants to contact the study team ensuring that each individual builds a relationship with the team. In addition, a programme of reminders is in place. Keeping the study online, using software which is compatible with mobile devices and allowing survey responses to be saved and returned to later should reduce the study burden and encourage participation.

The data analysis process for a Delphi study is inherently subjective. The whole study team will review all content analysis prior to participant feedback. To further reduce researcher bias, a member check process will be employed following each round of analysis. In this case, a PDF of all qualitative comments will be uploaded to Online Survey for participants to review alongside the new questions and statements.

CONCLUSION

This paper describes the methodology for a Delphi study to develop expert driven consensus on the most important

social outcomes for childhood cancer survivors. It will be the first time this concept has been explored and will help guide subsequent research to maximise the social outcomes for childhood cancer survivors. This methodology will provide a blueprint for social outcomes research in other childhood diseases.

Twitter Kate Absolom @DrKateAbsolom

Contributors All authors devised the focus of this Delphi study as part of a PhD investigating the social outcomes of childhood cancer survivors. SM is the PhD student and drafted the protocol and manuscript with guidance from AG as lead supervisor and RGF and KA as cosupervisors. SM will recruit participants to the study with support from AG. All authors will contribute to data interpretation, conclusions and final dissemination of results. All authors have read, contributed to and agreed to the final manuscript.

Funding This work is part of a PhD studentship supported by a grant from the Candlelighters Trust (registered charity no. 1045077). Grant number: RGEPI106374.

Competing interests None declared.

Patient and public involvement Patients and/or the public were involved in the design, or conduct, or reporting, or dissemination plans of this research. Refer to the Methods section for further details.

Patient consent for publication Not applicable.

Provenance and peer review Not commissioned; externally peer reviewed.

Supplemental material This content has been supplied by the author(s). It has not been vetted by BMJ Publishing Group Limited (BMJ) and may not have been peer-reviewed. Any opinions or recommendations discussed are solely those of the author(s) and are not endorsed by BMJ. BMJ disclaims all liability and responsibility arising from any reliance placed on the content. Where the content includes any translated material, BMJ does not warrant the accuracy and reliability of the translations (including but not limited to local regulations, clinical guidelines, terminology, drug names and drug dosages), and is not responsible for any error and/or omissions arising from translation and adaptation or otherwise.

Open access This is an open access article distributed in accordance with the Creative Commons Attribution Non Commercial (CC BY-NC 4.0) license, which permits others to distribute, remix, adapt, build upon this work non-commercially, and license their derivative works on different terms, provided the original work is properly cited, appropriate credit is given, any changes made indicated, and the use is non-commercial. See: <http://creativecommons.org/licenses/by-nc/4.0/>.

ORCID iDs

Sarah Milner <http://orcid.org/0000-0003-2685-5296>

Kate Absolom <http://orcid.org/0000-0002-5477-6643>

REFERENCES

- 1 National Cancer Registration and Analysis Service for England. Children, teenagers and young adult UK cancer statistics report 2021. UK; 2021.
- 2 Steliarova-Foucher E, Colombet M, Ries LAG, *et al*. International incidence of childhood cancer, 2001-10: a population-based registry study. *Lancet Oncol* 2017;18:719-31.
- 3 Cancer Research UK. Young People's Cancer Statistics, 2020. Available: <https://www.cancerresearchuk.org/health-professional/cancer-statistics/young-people-cancers/survival-heading-Three>
- 4 Trama A, Botta L, Foschi R, *et al*. Survival of European adolescents and young adults diagnosed with cancer in 2000-07: population-based data from EUROCARE-5. *Lancet Oncol* 2016;17:896-906.
- 5 Phillips SM, Padgett LS, Leisenring WM, *et al*. Survivors of childhood cancer in the United States: prevalence and burden of morbidity. *Cancer Epidemiol Biomarkers Prev* 2015;24:653-63.
- 6 Oeffinger KC, Mertens AC, Sklar CA, *et al*. Chronic health conditions in adult survivors of childhood cancer. *N Engl J Med* 2006;355:1572-82.
- 7 Erdmann F, Frederiksen LE, Bonaventure A, *et al*. Childhood cancer: survival, treatment modalities, late effects and improvements over time. *Cancer Epidemiol* 2021;71:101733.
- 8 Brinkman TM, Recklitis CJ, Michel G, *et al*. Psychological symptoms, social outcomes, socioeconomic attainment, and health behaviors

- among survivors of childhood cancer: current state of the literature. *J Clin Oncol* 2018;36:2190–7.
- 9 World Health Organisation. WHO constitution, 2020. Available: <https://www.who.int/about/who-we-are/constitution>
 - 10 Braveman P, Gottlieb L. The social determinants of health: it's time to consider the causes of the causes. *Public Health Rep* 2014;129 Suppl 2:19–31.
 - 11 SICI-SOE Social Outcomes. The SICI Working group on the assessment of social outcomes in education, 2020. Available: <https://www.sici-inspectorates.eu/Activities/Development-and-Research/Social-Outcomes>
 - 12 Saatci D, Thomas A, Botting B, et al. Educational attainment in childhood cancer survivors: a meta-analysis. *Arch Dis Child* 2020;105:339–46.
 - 13 Park M, Park HJ, Lee JM, et al. School performance of childhood cancer survivors in Korea: a multi-institutional study on behalf of the Korean Society of pediatric hematology and oncology. *Psychooncology* 2018;27:2257–64.
 - 14 Gammersall T, Skaczkowski G, Wilson C. Childhood cancer, age at diagnosis and educational attainment: a meta-analysis. *Crit Rev Oncol Hematol* 2020;145:102838.
 - 15 Molcho M, D'Eath M, Alforque Thomas A, et al. Educational attainment of childhood cancer survivors: a systematic review. *Cancer Med* 2019;8:3182–95.
 - 16 Schulte F, Kunin-Batson AS, Olson-Bullis BA, et al. Social attainment in survivors of pediatric central nervous system tumors: a systematic review and meta-analysis from the children's Oncology Group. *J Cancer Surviv* 2019;13:921–31.
 - 17 Lancashire ER, Frobisher C, Reulen RC, et al. Educational attainment among adult survivors of childhood cancer in Great Britain: a population-based cohort study. *J Natl Cancer Inst* 2010;102:254–70.
 - 18 Bashore L, Merchant Z, Lupo P, et al. Educational attainment in long-term survivors of childhood cancer: a report from the childhood cancer Survivor study (CCSS). *Journal of Clinical Oncology* 2019;37:10063.
 - 19 de Boer AGEM, Verbeek JHAM, van Dijk FJH. Adult survivors of childhood cancer and unemployment: a metaanalysis. *Cancer* 2006;107:1–11.
 - 20 Frederiksen LE, Mader L, Feychting M, et al. Surviving childhood cancer: a systematic review of studies on risk and determinants of adverse socioeconomic outcomes. *Int J Cancer* 2019;144:1796–823.
 - 21 Frobisher C, Lancashire ER, Jenkinson H, et al. Employment status and occupational level of adult survivors of childhood cancer in Great Britain: the British childhood cancer Survivor study. *Int J Cancer* 2017;140:2678–92.
 - 22 Dumas A, Berger C, Auquier P, et al. Educational and occupational outcomes of childhood cancer survivors 30 years after diagnosis: a French cohort study. *Br J Cancer* 2016;114:1060–8.
 - 23 Boman KK, Lindblad F, Hjert A. Long-Term outcomes of childhood cancer survivors in Sweden: a population-based study of education, employment, and income. *Cancer* 2010;116:1385–91.
 - 24 Kirchhoff AC, Leisenring W, Krull KR, et al. Unemployment among adult survivors of childhood cancer: a report from the childhood cancer Survivor study. *Med Care* 2010;48:1015–25.
 - 25 Dieluwelt U, Debatin K-M, Grabow D, et al. Educational and vocational achievement among long-term survivors of adolescent cancer in Germany. *Pediatr Blood Cancer* 2011;56:432–8.
 - 26 Mackie E, Hill J, Kondryn H, et al. Adult psychosocial outcomes in long-term survivors of acute lymphoblastic leukaemia and Wilms' tumour: a controlled study. *Lancet* 2000;355:1310–4.
 - 27 Barrera M, Shaw AK, Speechley KN, et al. Educational and social late effects of childhood cancer and related clinical, personal, and familial characteristics. *Cancer* 2005;104:1751–60.
 - 28 Font-Gonzalez A, Feijen EL, Sieswerda E, et al. Social outcomes in adult survivors of childhood cancer compared to the general population: linkage of a cohort with population registers. *Psychooncology* 2016;25:933–41.
 - 29 Koch SV, Kejs AMT, Engholm G, et al. Marriage and divorce among childhood cancer survivors. *J Pediatr Hematol Oncol* 2011;33:500–5.
 - 30 Janson C, Leisenring W, Cox C, et al. Predictors of marriage and divorce in adult survivors of childhood cancers: a report from the childhood cancer Survivor study. *Cancer Epidemiol Biomarkers Prev* 2009;18:2626–35.
 - 31 Pivetta E, Maule MM, Pisani P, et al. Marriage and parenthood among childhood cancer survivors: a report from the Italian AIEOP off-therapy registry. *Haematologica* 2011;96:744–51.
 - 32 Frobisher C, Lancashire ER, Winter DL, et al. Long-Term population-based marriage rates among adult survivors of childhood cancer in Britain. *Int J Cancer* 2007;121:846–55.
 - 33 Howard AF, Tan de Bibiana J, Smillie K, et al. Trajectories of social isolation in adult survivors of childhood cancer. *J Cancer Surviv* 2014;8:80–93.
 - 34 Girouard HS, Kovacs AH. Congenital heart disease: education and employment considerations and outcomes. *Int J Cardiol Congenit Heart Dis* 2020;1:100005.
 - 35 Raissadati A, Knihtilä H, Pätälä T, et al. Long-Term social outcomes after congenital heart surgery. *Pediatrics* 2020;146. doi:10.1542/peds.2019-3745. [Epub ahead of print: 05 06 2020].
 - 36 Mellerio H, Guilmin-Crépon S, Jacquin P, et al. Long-Term impact of childhood-onset type 1 diabetes on social life, quality of life and sexuality. *Diabetes Metab* 2015;41:489–97.
 - 37 Fleming M, Fittion CA, Steiner MFC, et al. Educational and health outcomes of children treated for asthma: Scotland-wide record linkage study of 683716 children. *Eur Respir J* 2019;54:1802309.
 - 38 Hasson F, Keeney S, McKenna H. Research guidelines for the Delphi survey technique. *J Adv Nurs* 2000;32:1008–15.
 - 39 Taylor E. We Agree, Don't We? The Delphi Method for Health Environments Research. *HERD* 2020;13:11–23.
 - 40 Niederberger M, Spranger J. Delphi technique in health sciences: a MAP. *Front Public Health* 2020;8:457.
 - 41 McKenna HP. The Delphi technique: a worthwhile research approach for nursing? *J Adv Nurs* 1994;19:1221–5.
 - 42 Jairath N, Weinstein J. The Delphi methodology (Part one): a useful administrative approach. *Can J Nurs Adm* 1994;7:29–42.
 - 43 Vogel C, Zwolinsky S, Griffiths C, et al. A Delphi study to build consensus on the definition and use of big data in obesity research. *Int J Obes* 2019;43:2573–86.
 - 44 Okoli C, Pawlowski SD. The Delphi method as a research tool: an example, design considerations and applications. *Inf Manage* 2004;42:15–29.
 - 45 Steliarova-Foucher E, Stiller C, Lacour B, et al. International classification of childhood cancer, third edition. *Cancer* 2005;103:1457–67.
 - 46 Children's Cancer and Leukaemia Group. What we do. Available: <https://www.cclg.org.uk/>
 - 47 Cancer Research UK. Children's cancers incidence statistics, 2022. Available: <https://www.cancerresearchuk.org/health-professional/cancer-statistics/childrens-cancers/incidence> - heading-Three
 - 48 R Avella J. Delphi panels: research design, procedures, advantages, and challenges. *International Journal of Doctoral Studies* 2016;11:305–21.
 - 49 Jisc. Online surveys, 2021. Available: <https://www.onlinesurveys.ac.uk/>
 - 50 Keeney S, Hasson F, McKenna H. Consulting the oracle: ten lessons from using the Delphi technique in nursing research. *J Adv Nurs* 2006;53:205–12.
 - 51 Hsieh H-F, Shannon SE. Three approaches to qualitative content analysis. *Qual Health Res* 2005;15:1277–88.
 - 52 Nasa P, Jain R, Juneja D. Delphi methodology in healthcare research: how to decide its appropriateness. *World J Methodol* 2021;11:116–29.

Identifying the Important Social Outcomes for Childhood Cancer Survivors: An e-Delphi Study Protocol

SUPPLEMENTARY FILE 1: PATIENT PARTICIPANT INFORMATION SHEET

UNDERSTANDING THE IMPORTANT SOCIAL OUTCOMES FOR CHILDHOOD CANCER SURVIVORS: AN E-DELPHI STUDY

PARTICIPANT INFORMATION SHEET FOR PATIENTS

We'd like to invite you to take part in our research study. Before you decide, it is important that you understand why the research is being done and what it would involve for you. Please take time to read this information. If there is anything that is not clear, or if you would like more information, please ask us.

What is the purpose of this study?

- This study will help identify the most important aspects of social health for adults who had cancer as a child.
- We think of social health as the parts of life, besides physical and mental health, that help adults who had cancer as a child to lead full, happy and satisfied lives.
- In the UK, more than 8 out of 10 children with cancer will survive. Some will have problems after their treatment.
- These can include problems with social health.
- Social health problems are important because they affect all areas of our lives.
- So far, we don't know what the most important areas are for people who had cancer as a child.
- It would be good to know this so that the best support can be given to survivors. Doing this will help survivors to lead the life they want as an adult.

Why have I been invited?

- You have been invited because you had cancer as a child or young person.
- This will mean you understand best how it affects your life in the long-term.
- We are also asking teachers, social workers, doctors and nurses to take part.
- In total, at least 40 people will be involved.

Do I have to take part?

- No. Taking part is voluntary.
- You can also stop being part of the study at any time, without giving a reason, but we will keep information about you that we already have unless you specifically ask for it to be removed.
- If you do not take part or if you withdraw it will not affect your hospital care.

What will happen if I decide to take part?

- We will ask you to complete 3-5 online surveys over 4-5 months. The first survey will be in Spring 2022.
- It will take about 15-20 minutes to answer each survey.
- We will show you a list of possible aspects of social health and ask you whether they are important for adults who had cancer as a child and the general population.

- We will also ask you to let us know of any important areas we have missed.
- In the next survey, we will ask for your thoughts on a summary of the answers from the first round.
- All your answers are anonymous so other people will not know what you have said.

Who is organising, sponsoring and funding the study?

- A team at the University of Leeds is organising the study as part of their child cancer research alongside colleagues at Leeds Teaching Hospitals Trust.
- The University of Leeds is also the sponsor for this study.
- It is funded by Candlelighters charity who support children with cancer.

How confidential are my answers?

- All your answers are confidential.
- No-one else in the study will ever be able to see your answers. They are collected online using www.onlinesurvey.ac.uk.
- We will ask you for your email address and basic details like your age.
- Your answers and email address will be stored securely at the University of Leeds.
- We will delete your email address 12 months after the study closes.
- Your answers will be kept for 5 years after the end of the study.

Who has reviewed the study?

- All research is reviewed by an independent group of people called a Research Ethics Committee (REC) to protect you as a participant. This study has approval from the Health Research Authority (HRA) and the West of Scotland REC 4.

What happens at the end of the study?

- We will produce a report so that you can see the final results.
- We will write our report in a way that no-one can work out that you took part in the study.
- We may use direct quotes from the study in our report but they will also be anonymised so no-one could link them to you.
- We will publish this report and present it at conferences so that it can help other research teams.
- This study will also form part of a doctoral thesis.
- We hope that research based on these results will go on to help childhood cancer survivors live the best lives possible.

Where can I find out more about how my information is used if I take part?

- At www.hra.nhs.uk/information-about-patients/
- At <https://dataprotection.leeds.ac.uk/wp-content/uploads/sites/48/2019/02/Research-Privacy-Notice.pdf>. The University data protection officer can be contacted at dpo@leeds.ac.uk
- By sending the research team an email or ringing us using the contact details below.

What do I do now?

- If you would like to take part in the study or have any questions please contact us by:
 - Email: YSRCCYP@leeds.ac.uk
 - Phone or text: 07592285019
 - Scanning this QR code with your phone. It will send us an email from your email.



- After you get in touch we will contact you to make sure we have your email.
- We will then send out the link to the first survey via email with a reminder a week later.
- We will take consent before you start the first survey.
- Hopefully the study wouldn't cause any concerns for you but if you decide to take part and it does raise any issues then a member of the team will be available every day on 07592285019 or you could email us.

Thank you for considering to take part.

Identifying the Important Social Outcomes for Childhood Cancer Survivors: An e-Delphi Study Protocol

SUPPLEMENTARY FILE 2: ROUND 1 QUESTIONNAIRE, ALL PARTICIPANTS

WELCOME

Thank you for agreeing to take part in this study.

Firstly, we need to confirm that you have had information about the study and consent to be involved.

Please answer these questions to confirm that you have had information about the study and consent to take part.

- 1.1. I have read the participant information leaflet **yes/no**
- 1.2. I understand how my answers will be used **yes/no**
- 1.3. I consent for my email address to be stored securely at the University of Leeds for the purpose of this study **yes/no**
- 1.4. I consent to take part in this study **yes/no**
2. Please choose the participant group you fall into (**Click box leads to further question based on first box chosen**)
 - 2.1. Patient -> Leukaemia/Brain or spinal tumour/ Other cancer
-> Age 18-29years / >29 years
 - 2.2. Clinical-> Doctor/ nurse
 - 2.3. Social worker
 - 2.4. Teacher-> Primary/secondary
-> State/ Fee paying
3. We would like to collect some basic information that will help us to understand who is taking part in the study:
 - 3.1. Please choose one option that best describes your ethnic group or background: (**As per census ethnic groups**)
 - White: English, Welsh, Scottish, Northern Irish or British; Irish; Gypsy or Irish Traveller; Any other White background
 - Mixed or Multiple ethnic groups: White and Black Caribbean; White and Black African; White and Asian; Any other Mixed or Multiple ethnic background
 - Asian or Asian British: Indian; Pakistani; Bangladeshi; Chinese; Any other Asian background
 - Black, African, Caribbean or Black British: African; Caribbean; Any other Black, African or Caribbean background
 - Other ethnic group: Arab; Any other ethnic group
 - Prefer not to say
 - 3.2. Please choose one option that best describes your gender
 - Female
 - Male
 - Prefer to self-describe:
 - Prefer not to say

3.3. Please select your age bracket

- 18-24, 25-34, 35-44, 45-54, 55-64, 65+ & 'Prefer not to say'

- What is leading a good life for childhood cancer survivors?

Leading a good life is more than having good mental and physical health alone. There are other aspects of life that are needed to ensure happiness, satisfaction and a sense of fulfilment – allowing a person to be the most that they can be. We think of these as 'social health'.

We are interested in what you think these other things are for adults and which of them are the most important.

We are particularly interested in seeing whether you think they are the same for adults who had cancer as a child and adults in the general population.

All the responses we get will be brought together over the rounds of the project. We will use the results to target research in the important areas so that in the future we can provide the right support to survivors when they most need it.

- SCORING

Over the following pages, we are going to ask some questions about how important different things are for adults who had cancer as a child and the general, adult population.

Please rate each idea from 1 to 7.

1 is *NOT at all important* and 7 is *VERY important*.

In the text box below each idea, please write down any reasons for your rating. This will help us to understand your answers and prepare for the next round of questions.

We also want to know of any other ideas you have and will ask this at the end.

For each of the following questions there is an individual 7 point Likert scale for adults who had cancer as a child and for the general adult population with a free-text box under each when viewed on the survey host website: www.Onlinesurveys.ac.uk

4. Education

This section looks at whether education is or has been important.

- 4.1. How important is it to receive an education? This is being able to go to school, college and university for example.
- 4.2. How important is it to complete school up to age 18?
- 4.3. How important is being able to complete vocational training e.g. NVQs or apprenticeships?
- 4.4. How important is being able to complete higher education e.g. getting a degree at university or similar?
- 4.5. How important is it to have good school attendance as a child?
- 4.6. How important is it to achieve or have achieved good exam grades?
- 4.7. How important is it to have enjoyed school?

- 4.8. How important is it to have participated in extra-curricular activities such as sport or music clubs?

5. Independence and Autonomy

Next we're going to think about independence and autonomy.

- 5.1. How important is being able to live independently?
- 5.2. How important is it to have autonomy? This is a person being able to make their own decisions about how they want to live.
- 5.3. How important is being able to take on big responsibilities such as raising a child?

6. Work and Finances

This section looks at work and finances

- 6.1. How important is it to have financial stability? This is a person being in control of their day-to-day finances and having enough money to meet their needs including saving for retirement or emergencies.
- 6.2. How important is it to be able to save money for luxuries? These might include holidays abroad, meals out or a better car than necessary.
- 6.3. How important is it to have a job? This could be paid or unpaid.
- 6.4. How important is it to have a job that pays well enough to be independent and do the things a person wants to do?
- 6.5. How important is it to have job satisfaction? This means a person feeling content with their job and getting fulfilment from it.
- 6.6. How important is it to have a job that builds skills?
- 6.7. How important is it to be a homeowner? This means owning a home rather than renting. It could be with or without a mortgage.
- 6.8. How important is it to be doing as well or better financially compared to other people in the population?

7. Relationships

This section looks at relationships

- 7.1. How important is it to be connected to and have relationships with other people including family, friends, colleagues and romantic partners?
- 7.2. How important is it to have good family relationships?
- 7.3. How important is it to have good friendships?
- 7.4. How important is it to have good romantic relationships?
- 7.5. How important is it to have good relationships with colleagues at work?
- 7.6. How important is it to be able to communicate with government organisations, businesses or professionals?
- 7.7. How important is it to avoid social isolation? Social isolation is a lack of connections with or being cut off from other people? It can lead to loneliness.

8. Community Life

This section looks at being involved with the local community

- 8.1. How important is it to be involved with the local community?
- 8.2. How important is it to be able to take part in community leisure activities such as sports clubs or a local choir?
- 8.3. How important is it for adults to support those around them such as by volunteering or doing charity work? Being involved with a community because it's a good thing to do.
- 8.4. How important is it to be able to be involved in a religious or spiritual community if a person wishes?
- 8.5. How important is it to have a social identity? This means a feeling of belonging to a particular group.

9. Lifestyle

The last section looks at lifestyle.

- 9.1. How important is it to have good personal maintenance? This is a person being able to look after themselves in a way that maintains their health and ability to live independently. It includes areas like personal hygiene.
- 9.2. How important is being able to make positive lifestyle choices such as being able to exercise?
- 9.3. How important is it to be able to avoid risky behaviours which can impact health and well-being in the short and long term? This includes smoking and drug abuse.

10. What else is important?

You have worked through all of our suggestions for the social aspects of life that are needed to help adults who had cancer as a child lead a good life.

We are now interested in whether you have any other ideas of what these aspects might be. Is there anything we have missed?

In the box below, please add your comments about any other areas you think are important
Free text box

Thank you for completing the questionnaire
We will be in touch soon with the next round

END