







# BMJ Open Diagnostic and prognostic factors in patients with prostate cancer: a systematic review

Katharina Beyer <sup>1</sup>, Lisa Moris,<sup>2</sup> Michael Lardas,<sup>3</sup> Anna Haire,<sup>1</sup> Francesco Barletta <sup>4</sup>, Simone Scuderi,<sup>4</sup> Megan Molnar <sup>5</sup>, Ronald Herrera,<sup>5</sup> Abdul Rauf,<sup>6</sup> Riccardo Campi <sup>7</sup>, Isabella Greco,<sup>7</sup> Kirill Shiranov,<sup>8</sup> Saeed Dabestani,<sup>9</sup> Thomas van den Broeck,<sup>2</sup> Sujenthiran Arun,<sup>10</sup> Mauro Gacci,<sup>7</sup> Giorgio Gandaglia,<sup>4</sup> Muhammad Imran Omar <sup>11</sup>, Steven MacLennan <sup>11</sup>, Monique J Roobol,<sup>12</sup> Bahman Farahmand,<sup>13</sup> Eleni Vradi,<sup>5</sup> Zsuzsanna Devecseri,<sup>14</sup> Alex Asimwe,<sup>5</sup> Jihong Zong,<sup>15</sup> Sara J MacLennan,<sup>11</sup> Laurence Collette,<sup>16</sup> James NDow,<sup>12</sup> Alberto Briganti,<sup>4,17</sup> Anders Bjartell,<sup>18</sup> Mieke Van Hemelrijck,<sup>1</sup> and the PIONEER Consortium

**To cite:** Beyer K, Moris L, Lardas M, *et al*. Diagnostic and prognostic factors in patients with prostate cancer: a systematic review. *BMJ Open* 2022;**12**:e058267. doi:10.1136/bmjopen-2021-058267

► Prepublication history and additional supplemental material for this paper are available online. To view these files, please visit the journal online (<http://dx.doi.org/10.1136/bmjopen-2021-058267>).

KB, LM and ML are joint first authors.

Received 13 October 2021  
Accepted 04 February 2022



© Author(s) (or their employer(s)) 2022. Re-use permitted under CC BY-NC. No commercial re-use. See rights and permissions. Published by BMJ.

For numbered affiliations see end of article.

## Correspondence to

Katharina Beyer;  
katharina.beyer@kcl.ac.uk

## ABSTRACT

**Objectives** As part of the PIONEER Consortium objectives, we have explored which diagnostic and prognostic factors (DPFs) are available in relation to our previously defined clinician and patient-reported outcomes for prostate cancer (PCa).

**Design** We performed a systematic review to identify validated and non-validated studies.

**Data sources** MEDLINE, Embase and the Cochrane Library were searched on 21 January 2020.

**Eligibility criteria** Only quantitative studies were included. Single studies with fewer than 50 participants, published before 2014 and looking at outcomes which are not prioritised in the PIONEER core outcome set were excluded.

**Data extraction and synthesis** After initial screening, we extracted data following the Checklist for Critical Appraisal and Data Extraction for Systematic Reviews of prognostic factor studies (CHARMS-PF) criteria and discussed the identified factors with a multidisciplinary expert group. The quality of the included papers was scored for applicability and risk of bias using validated tools such as PROBAST, Quality in Prognostic Studies and Quality Assessment of Diagnostic Accuracy Studies 2.

**Results** The search identified 6604 studies, from which 489 DPFs were included. Sixty-four of those were internally or externally validated. However, only three studies on diagnostic and seven studies on prognostic factors had a low risk of bias and a low risk concerning applicability.

**Conclusion** Most of the DPFs identified require additional evaluation and validation in properly designed studies before they can be recommended for use in clinical practice. The PIONEER online search tool for DPFs for PCa will enable researchers to understand the quality of the current research and help them design future studies.

**Ethics and dissemination** There are no ethical implications.

## Strengths and limitations of this study

- A multidisciplinary team including patients, urologists, oncologists, radiation oncologists, methodological experts and pathologists were involved throughout the study.
- The search was restricted from 2014 onwards, to maintain a pragmatic approach.
- The main strength of this study is the extensive and comprehensive search and screening of the studies included.

## INTRODUCTION

Prostate cancer (PCa) accounts for 15% of cancers diagnosed<sup>1</sup> and is the second most common cancer in males worldwide.<sup>2</sup> PCa is clinically and molecularly heterogeneous and is usually suspected based on the clinical findings of digital rectal examination and/or prostate-specific antigen (PSA) levels.<sup>1</sup> However, which diagnostic or prognostic factors (DPFs) can be used to select patients for specific therapeutic options remains largely unclear.<sup>3</sup> Specific biomarkers in urine or in blood are available on top of traditional PSA testing, such as PCA3, TMPRSS2-ERG fusion or kallikreins as incorporated in the Phi or 4Kscore test together with other parameters including family history.<sup>4–7</sup> However, the European Association of Urology (EAU) guidelines (2021) currently do not provide general recommendations to implement these biomarkers into routine screening programmes due to limited data. As part of the American Society of Clinical Oncology (ASCO) guidelines, Eggenner *et al*

recommended commercially available biomarkers, which have been shown to provide prognostic significance and additional information beyond standard clinical models in patient selection in the localised context: Oncotype Dx Prostate, Prolaris, Decipher, and ProMark.<sup>8</sup> However, no guidelines have recommended DPFs for other stages of PCa. The expert panel at the Advanced Prostate Cancer Consensus Conference (APCCC) consensus meeting of advanced PCa in Basel 2019, recommended AR-V7 for mCRPC as potentially useful, which ultimately led to the inclusion of AR-V7 testing in the NCCN guidelines.<sup>9</sup>

The PIONEER Consortium is an international collaboration coordinated by the EAU, which aims to establish the best evidence-based management and clinical practice of PCa across all disease stages using the power of big data analytics towards a more outcome-driven, value-based and patient-centric healthcare system.<sup>10</sup> A key objective is to address one of the major challenges within the context of diagnostic or prognostic biomarkers/factors: the inability to incorporate DPFs into the management of PCa in terms of screening, diagnosis and treatment. It is therefore important to summarise and evaluate the evidence. Biomarkers can be classified into different types: diagnostic, prognostic, predictive and therapeutic—in this study we focus on the first two.<sup>11</sup> A diagnostic biomarker or factor is useful when cancer is suspected and allows the early detection based on symptoms or tests.<sup>11</sup> The overall aim of a diagnostic biomarker is to distinguish people with the diseases from people without the disease. A prognostic biomarker or factor is a clinical or biological characteristic which provides information on the likely course of the disease, that is, biochemical progression or disease recurrence.<sup>11</sup> It enables clinicians to decide on the most suitable treatment depending on the likely course of the disease. In the sections below, we have used the terms biomarkers and factors interchangeably. Multiple DPFs can be measured in tissue, blood or urine. These come with different advantages and disadvantages and only a limited number of factors are currently available for PCa in standard clinical care.

We aimed to systematically review the evidence from 2014 onward to assess which DPFs are available in relation to previously defined outcomes for PCa.

## METHODS

The systematic review (SR) followed the Preferred Reporting Items for Systematic Reviews and Meta-Analyses guidelines.<sup>12</sup> A detailed protocol of the overall project was published elsewhere<sup>13</sup> (please see the protocol attached as methods online supplemental appendix). Briefly, we followed the following four steps (figure 1):

1. Comprehensive systematic literature review of DPFs for all stages of PCa (localised, locally advanced, metastatic, and non-metastatic castration resistant) from 2014 onwards. DPFs developed before 2014 were not included, due to the significant changes influencing the staging of PCa (i.e., Consensus Conference on

Workflow	Task
Stage 1.	Broad literature-based systematic review of diagnostic and prognostic factors (DPFs) for all stages of prostate cancer from 2014 onwards (English only; humans). <ul style="list-style-type: none"> <li>• Extract data from the included studies following the CHARMS-PF guideline.</li> </ul>
Stage 2.	Discussion of systematic review findings by a multidisciplinary expert panel <ul style="list-style-type: none"> <li>• Review the list of included studies</li> </ul>
Stage 3.	Risk of Bias Assessment and applicability of individual studies using PROBAST, QUIPS and QUADAS-2
Stage 4.	Quantitative assessment of individual articles using meta-analytic techniques: <ul style="list-style-type: none"> <li>• If PROBAST indicates low risk of bias and low concerns for applicability: Oxford Classification Centre for Evidence Based Medicine: <ol style="list-style-type: none"> <li>1. If there is Level 1a (SR of RCTs), we do not do a meta-analysis</li> <li>2. No Level 1a but &gt;2 RCTs, we do a meta-analysis</li> <li>3. No Level 1a/b, i.e. if at least two RCTs are now available, and systematic review of RCT evidence is not possible, we will identify whether there is a systematic review for observational studies (real world evidence; RWE), we do not do a meta-analysis</li> <li>4. If systematic review of RWE is not available, a systematic review of observational study will be conducted, and a meta-analysis will be performed if at least two RWEs studies are available and data pooling is feasible and there are low concerns of risk of bias.</li> </ol> </li> </ul>
Final aim:	Develop online PIONEER Online Search Tool for DPFs

**Figure 1** Overview of four stage process. CHARMS-PF, Checklist for Critical Appraisal and Data Extraction for Systematic Reviews of prognostic factor studies; DPFs, diagnostic and prognostic factors; PROBAST, Prediction model Risk Of Bias Assessment Tool; QUADAS-2, Quality Assessment of Diagnostic Accuracy Studies 2; QUIPS, Quality in Prognostic Studies; SR, systematic review.

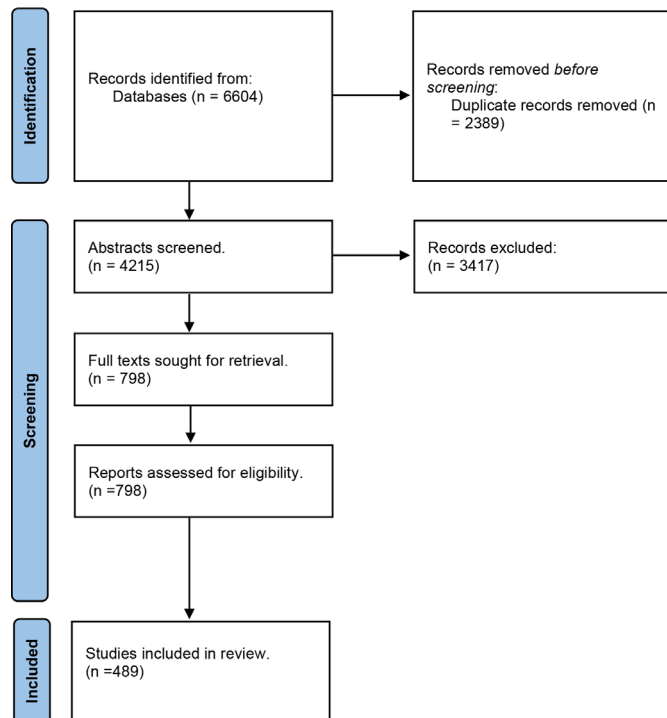
1. Gleason Grading of Prostatic Carcinoma [60]) that have taken place in diagnostic and prognostic practice and patient management since then.
2. Assessment and identification of final list of DPFs by a multidisciplinary expert panel.
3. Evaluation of quality of studies published using risk of bias (RoB) tools: Prediction model RoB Assessment Tool (PROBAST) if applicable; or Quality in Prognostic Studies (QUIPS) tool for prognostic and the Quality Assessment of Diagnostic Accuracy Studies 2 (QUADAS-2) tool for diagnostic factors.
4. Due to the heterogeneity of the studies identified no further formal quantitative assessments in the form of a meta-analyses could be performed. Hence, the findings of stages 1–3 have been reported here as the results of a SR.

### Stage 1: comprehensive literature review

We developed the search criteria for the first search with an information scientist who specialises in SR for urology. MEDLINE, Embase and the Cochrane Library were searched on 21 January 2020. The second search was developed following a consultation with an independent information scientist group who excluded row 12, 14 and 16 of (see online supplemental table 1). We screened the EAU Guidelines reference list for PCa in our third search (see figure 2).

### Stage 2: multidisciplinary expert meeting

On the 20 March 2020, we invited a group of multidisciplinary participants to discuss the identified articles on DPFs (see online supplemental table 2). The participants were presented the search criteria and the extracted data. Data extraction followed the CHARMS-PF checklist and we added author and year of publication.



**Figure 2** PRISMA flow diagram. PRISMA, Preferred Reporting Items for Systematic Reviews and Meta-Analyses; COS, Core outcome set.

### Stage 3: evaluation of quality of studies published using the RoB tools

Prior to the evaluation of the quality of studies, an initial pilot screening to prepare the raters for the use of PROBAST, QUADAS-2 and QUIPS was performed. This aimed to reach consensus on how to judge the domains of the assessments using the three RoB tools. Two urologists (FB and SS) and two epidemiologists (AH and KB) were involved in the pilot assessments. The group discussed any discrepancies. Articles which presented the development and validation either internal validation or external validation (i.e., the same data was used for both development and internal validation, such as bootstrapping or cross-validation; different populations were used for development and validation), of a diagnostic or prognostic model were assessed with PROBAST. Papers assessing single biomarkers or with/without validation were assessed with QUIPS for prognostic or QUADAS-2 for diagnostic biomarkers.

#### Evaluation of quality of studies published using QUADAS-2

The RoB of diagnostic factors without validation or single validated factors was evaluated using QUADAS-2. We assessed the following four domains: patient selection, index test, reference standards and flow and timing. The first three domains are assessed looking at applicability and all four domains were assessed in terms of RoB.<sup>14</sup> We created a summative score after the diagnostic studies were assessed by two reviewers and in case of disagreement a third reviewer assessed the study.

#### Evaluation of quality of studies published using PROBAST (diagnostic)

The RoB of internal or external validated diagnostic models was assessed using the PROBAST RoB tool. PROBAST includes four domains assessing the RoB (i.e., participants, predictors, outcome, and analysis) and four domains assessing applicability (i.e., participants, predictors, and outcome) (see online supplemental table 3 for scoring information).

#### Evaluation of quality of studies published using QUIPS

To assess the articles which are single factors or were not internally or externally validated, we used the QUIPS rating procedure (see online supplemental table 4 for scoring information). To standardise the approach across raters, we used the QUIPS electronic spreadsheet (excel) from Hayden *et al.*<sup>15</sup> There are no rules available for QUIPS on how to score the overall RoB of a paper. Due to the large number of papers and the need for synthesis, we followed the suggestions from Grooten *et al.*, and categorised on the following criteria: (1) Paper was classified as low RoB if all domains were classified as having low RoB, or up to one moderate RoB; (2) Paper was classified as high RoB if one or more domains were classified as having high RoB, or  $\geq 3$  moderate RoB; (3) Paper was classified as having moderate RoB if all papers in between 1 or 2 (see online supplemental table 1). This assessment was based on the risk scores of individual assessments within the group. If the overall assessment was not possible due to differences in the individual category, a third assessor reviewed the assessments and the results were discussed.

#### Evaluation of quality of studies published using PROBAST (prognostic)

The RoB of prognostic validated models were assessed using PROBAST. As highlighted above, PROBAST includes four domains assessing the RoB (i.e., participants, predictors, outcome and analysis) and the domains assessing applicability (i.e., participants, predictors and outcome).

## RESULTS

### Stage 1: comprehensive literature review

Stage 1 identified 6604 citations and contained three independent searches. After removing duplicates, we screened 4215 abstracts, from which 489 met the inclusion criteria.

### Stage 2: multidisciplinary expert meeting

The group discussed the results and additional literature on DPFs was suggested to help the classification of the DPFs, such as the ASCO Guideline on Molecular Biomarkers in Localised Prostate Cancer.<sup>16</sup>

### Stage 3: evaluation of quality of studies published using the RoB tools

The 489 articles were equally divided between six groups. The six groups received the guidance documents which

**Table 1** Overall judgement of RoB

QUADAS-2, diagnostic		
Overall judgement of RoB	RoB	Applicability
Low	10	10
High	23	21
Unclear	8	10
Total	41	
PROBAST, diagnostic		
Overall judgement of RoB	RoB	Applicability
Low	3	8
High	14	10
Unclear	3	2
Total	20	
QUIPS		
Overall judgement of RoB	RoB	Applicability
Low	29	
Moderate	49	
High	307	
Total	385	
PROBAST, prognostic		
Overall judgement of RoB	RoB	Applicability
Low	3	15
High	27	20
Unclear	13	8
Total	43	

PROBAST, Prediction model Risk Of Bias Assessment Tool; QUADAS-2, Quality Assessment of Diagnostic Accuracy Studies 2; QUIPS, Quality in Prognostic Studies; RoB, risk of bias.

were identified during the pilot phase.<sup>14 15 17-19</sup> In addition, MvH and KB discussed questions with each individual group.

#### Evaluation of quality of studies published using QUADAS-2

The RoB of the 41 included studies was low for 10 studies, high for 23 studies and unclear for eight. RoB concerning applicability was low for 10 studies, high for 21 studies and unclear for 10 studies (see [table 1](#)). [Table 2](#) shows the studies with an overall low RoB across both categories. Two studies were identified to have an overall low RoB.<sup>20 21</sup>

#### Evaluation of quality of studies published using PROBAST (diagnostic)

We identified 20 papers to be assessed with PROBAST. The RoB of three papers was low, high for 14 and was

unclear for three. The applicability of eight papers was high and was unclear for two (see [table 1](#)). Online supplemental table 1 shows the criteria on how to judge the RoB. One study had an overall low RoB across both domains. All categories except 'predictors' was scored to have a low RoB. There was little information available for the category predictors and therefore it was scored as 'unclear' (see [table 3](#)).

#### Evaluation of quality of studies published using QUIPS

The 12 assessors independently inserted the relevant information and assessed each domain such as participation, attrition, prognostic factor confounding and statistical analysis and reporting.

A total of 387 prognostic factors were assessed using QUIPS. A total of 307 papers were classified as high RoB. Forty-nine papers were classified as having a moderate RoB and 28 papers were scored as low RoB (see [table 1](#)). Out of the 28 papers with a low RoB, the most common moderate bias was linked to attrition (12 papers), followed by confounding (4 papers), participation (3 papers), outcome (1 paper), statistical analysis (1 paper) (see [table 4](#)).

#### Evaluation of quality of studies published using PROBAST (prognostic)

The assessors identified 44 papers to be assessed with PROBAST, of those three scored a low RoB, 27 a high RoB and 13 were assessed as unclear (see [table 1](#)). In terms of applicability, 15 papers scored low, 20 high and eight unclear. Two papers were scored to have an overall low RoB<sup>22 23</sup> (see [table 3](#)).

#### Characteristics of studies identified with low RoB

Details of the identified validated DPF models with an adequate quality are presented in [table 5](#). We identified 32 studies with an overall low RoB (assessed with PROBAST, QUIPS, QUADAS-2). Out of these 32 studies, we identified one validated diagnostic model (assessed with PROBAST),<sup>24</sup> two validated prognostic models (assessed with PROBAST),<sup>22 23</sup> two non-validated diagnostic single factors (assessed with QUADAS-2)<sup>20 21</sup> and 26 prognostic factors (assessed with QUIPS)<sup>20-50</sup> which have not been validated and two single prognostic factors which have been validated (assessed with QUIPS).<sup>34 50</sup> Prognostic factors assessed with QUIPS were identified with a low RoB for the localised PCa population. Sixty-seven per cent of the low RoB DPFs were intended to be measured after the treatment was performed. In addition,

**Table 2** Non-validated DPFs with overall low RoB: QUADAS-2

Author	Year	Patient selection	Index test(s)	Reference standard	Flow and timing	Patient selection	Index test(s)	Reference standard	RoB	Applicability
Hagiwara <sup>20</sup>	2017	Low	Low	Low	Low	Low	Low	Low	Low	Low
Kelly <sup>21</sup>	2015	Low	Low	Low	Low	Low	Low	Low	Low	Low

DPFs, diagnostic and prognostic factors; QUADAS-2, Quality Assessment of Diagnostic Accuracy Studies 2; RoB, risk Of bias.

**Table 3** DPFs assessed with PROBAST

Author	ROB				Applicability			Overall	
	Participants	Predictors	Outcome	Analysis	Participants	Predictors	Outcome	ROB	Applicability
Diagnostic									
Guinney <sup>22</sup>	Low	Low	Low	Low	Low	Low	Low	Low	Low
Joniau <sup>23</sup>	Low	Low	Low	Low	Low	Low	Low	Low	Low
Prognostic									
Palsdottir <sup>24</sup>	Low	Unclear	Low	Low	Low	Low	Low	Low	Low

DPFs, diagnostic and prognostic factors; PROBAST, Prediction model Risk Of Bias Assessment Tool; RoB, risk of bias.

the most commonly measured outcome was biochemical recurrence followed by overall survival. However, it is important to take into consideration that even from the studies assessed with a low RoB, only 2 out of the 32 were of a non-observational study design.

As highlighted above, we identified three validated DPFs which were scored to have a low RoB and low risk concerning applicability. First, we identified the ‘Unified Prostate Cancer Risk Prediction Model Combining the Stockholm 3 Test and MRI’, a risk prediction model which combines clinical variables, genetic and protein biomarkers. Five hundred and thirty-two men were involved across three centres.<sup>24</sup> Second, the DREAM challenge developed a set of five standardised raw event-level tables, using laboratory values, patients’ demographic information, medical history, lesion sites, previous treatments and vital signs of patients with mCRPC. These variables were combined by using data from four clinical trials.<sup>22</sup> Third, Joniau *et al.*, developed ‘Pretreatment Tables’ to predict the pathologic stage of locally advanced PCa after RP based on pretreatment PSA level and biopsy Gleason score.<sup>23</sup>

We identified two single factors which were validated and had low RoB. First, Lara *et al.*, assessed and validated the serum biomarkers of bone metabolism (N-telopeptide and pyridinoline) and formation (C-terminal collagen propeptide and bone alkaline phosphatase)) in 778 CRPC patients as part of the randomised phase III SWOG trial (S0421) of docetaxel/prednisone with or without atrasentan.<sup>34</sup> Second, Berg *et al.*, showed that ERG expression can be used to estimate the risk of progression during AS including 265 patients at diagnosis and progression during AS.<sup>50</sup>

## DISCUSSION

Despite the large number of studies on DPFs which are published every year, there is a paucity of DPFs that are suitable to be incorporated into clinical practice. The majority of DPFs have not yet been validated and are identified in poor quality studies. Our analysis found that most identified studies had a high to moderate RoB due to poor design standards, conduct, reporting and/or analysis that is, generalisability and size of the population, poor model development (no testing or missing important

confounders) or only correlation studies, missing data was rarely reported. However, we did identify a small number of validated DPFs with low RoB. We identified three validated models which combine: first, clinical variables, genetic and protein biomarkers, and improved clinical outcome performance of PCa diagnostics (The Unified Prostate Cancer Risk Prediction Model)<sup>24</sup>; second, laboratory values, patients’ demographic information, medical history, lesion sites, previous treatments and vital signs of patients with metastatic castration-resistant PCa (DREAM challenge)<sup>22</sup>; and third, pretreatment PSA level and biopsy Gleason score to predict the pathological stage of locally advanced PCa (‘Pretreatment Tables’).<sup>23</sup>

Two single factors have been validated: the serum biomarkers of bone metabolism in CRPC patients<sup>34</sup> and the ERG expression, which can be used to estimate the risk of progression during AS,<sup>50</sup> which has already been highlighted in the clinical guidelines.<sup>1</sup>

Aladawani *et al.*, assessed prediction models for PCa to be used in primary care settings in their SR and identified five models which met their inclusion criteria. From these identified models only one model was externally validated and only one (the Lazzari model<sup>25</sup>) had the potential to be implemented in primary care. Lazzari *et al.*, had the lowest RoB (based on PROBAST); however, it must be externally validated before it can be implemented. Hence, Aladawani *et al.*, also concluded that the existing models have limitations concerning study design and reporting performance.<sup>52</sup>

Tian *et al.*, conducted a review on biomarkers for CRPC patients, however, their quality assessment was focused on study design (RCT vs. observational study), whereas we focused on biomarker specific tools.<sup>53</sup> While Tian *et al.*, and our review identified similar factors and quality scores, there were slight discrepancies between the overall RoB assessments. Tian *et al.*, used an overall quality assessment scale from 1 to 6 instead of low, medium and high. In their assessment the validated prognostic study by Lara *et al.*,<sup>34</sup> and the non-validated prognostic factor by Pei *et al.*,<sup>41</sup> were scored on the quality scale as 4 (medium quality). We assessed Lara *et al.*,<sup>34</sup> to have a low RoB with a moderate risk of confounding and Pei *et al.*,<sup>41</sup> with a moderate RoB concerning the prognostic factor itself. This might explain the discrepancies between the two

**Table 4** Characteristics of DPFs with overall low RoB

Author	Year	RoB	Population	Study design	Timing	Index	Outcomes
Palsdottir <sup>24</sup>	2019	Diag. PROBAST	Localised PCa	Observational study	Pre treatment	S3M-MRI (Stockholm3 +PIRADS)	csPCa diagnosis
Guinney <sup>22</sup>	2017	Prog. PROBAST	mCRPC	RCT	Post treatment	ePCR model	OS
Joniau <sup>23</sup>	2017	Prog. PROBAST	Locally advanced PCa	Observational study	Post-treatment	Gleason score +PSA	Adverse pathological features at RP; LNI
Hagiwara <sup>20</sup>	2017	QUADAS	Localised PCa	Observational study	Pre-treatment	WFA-reactive glycan-carrying PSA-Gi	PCa diagnosis, PSA-free survival
Kelly <sup>21</sup>	2015	QUADAS	Localised PCa	Observational study	Pre-treatment	miR-141, -145, -155, let7a	PCa diagnosis
Aguilera <sup>25</sup>	2015	QUIPS	High risk PCa	Observational study	Pre and post treatment	Age, rectal examination, PSA, biopsy Gleason score, uni/bilateral tumour, affected cylinder percentage) and postoperative	BCR
Alvim <sup>27</sup>	2019	QUIPS	Metastatic PCa	Observational study	Post-treatment	PSA response (PSA reduction $\geq$ 50%)	OS, PFS
Bramhecha <sup>26</sup>	2019	QUIPS	Localised PCa	Observational study	Post-treatment	PTEN deletion	BCR
Bruce <sup>28</sup>	2016	QUIPS	Localised PCa	Observational study	Post-treatment	AZGP1 expression	BR-free survival, CR-free survival, PC-specific death
Francini <sup>29</sup>	2018	QUIPS	mHSPC	Observational study	Post-treatment	Volume	OS, time to CRPC
Hamada <sup>30</sup>	2016	QUIPS	High risk PCa	Observational study	Post-treatment	PSA, PSA density (PSAD), PSAD of the transition zone, percentage of positive cores (PPC), prostate volume, TZ volume, Gleason score, PPC from the dominant side	BCR
Hashimoto <sup>31</sup>	2020	QUIPS	Localised PCa	Observational study	Post-treatment	Micro-lymphatic invasion, Gleason	BCR
Hung <sup>57</sup>	2017	QUIPS	mCRPC	Observational study	Post-treatment	Neurovascular bundle preservation, blood loss, pT stage, pN stage, pGS, PNI, angiolymphatic invasion, tumour amount in specimen, ECE, PSM, SVI, Bladder neck invasion, Foley duration, post-op undetectable PSA	BCR
Kato <sup>32</sup>	2018	QUIPS	High risk PCa	Observational study	Post-treatment	LC/IDC	PFS, CSS
Kluth <sup>33</sup>	2014	QUIPS	Localised PCa	Observational study	Post-treatment	No of lymph nodes	BCR
Lara <sup>34</sup>	2014	QUIPS Validated	mCRPC	RCT	Post treatment	Bone resorption and formation	OS
Lee <sup>35</sup>	2016	QUIPS	Localised PCa	Observational study	Post treatment	Positive surgical margin status and bilateral seminal vesicle invasion	BCR
Lévesque <sup>36</sup>	2019	QUIPS	Localised PCa	Observational study	Post treatment	UGT2B17 expression	BCR
Lin <sup>37</sup>	2017	QUIPS	Localised PCa	Observational study	Post treatment	Aberrant Promoter Methylation of Protocadherin8 (PCDH8)	BCR-free survival
Löffeler <sup>38</sup>	2015	QUIPS	mCRPC	Observational study	Anytime	PSA doubling time, PSA nadir during ADT, haemoglobin and alkaline phosphatase levels at CRPC	OS
Narang <sup>39</sup>	2017	QUIPS	Localised PCa	Observational study	Anytime	PSA: End-of-radiation PSA	BCR-free survival, MFS, CSS, OS
Ozden <sup>40</sup>	2017	QUIPS	Localised PCa	Observational study	Post treatment	Age	RRP specimen, BCR, and BCR-free survival rates
Pei <sup>41</sup>	2016	QUIPS	CRPC	Observational study	Pre and during treatment	Neutrophil-to-lymphocyte ratio	OS, PFS
Qu <sup>42</sup>	2016	QUIPS	mPCa and CRPC	Observational study	Pre treatment	AR-V7	Time to CRPC / CRPC: CSS
Qu <sup>43</sup>	2017	QUIPS	PCa	Observational study	Pre and during treatment	AR-V7	OS
Rüenauer <sup>44</sup>	2014	QUIPS	Localised PCa	Observational study	Post treatment	YWHAZ	OS

Continued

Table 4 Continued

Author	Year	RoB	Population	Study design	Timing	Index	Outcomes
Shimodaira <sup>45</sup>	2020	QUIPS	Metastatic PCa	Observational study	Post treatment	Value of platelet counts	Disease specific survival
Strand <sup>46</sup>	2015	QUIPS	Localised PCa	Observational study	Post treatment	5-hydroxymethylcytosine score	BCR
Takagi <sup>47</sup>	2017	QUIPS	Localised PCa	Observational study	Post treatment	Age, T stage, % of pos cores, Gleason score, PSA, Total ADT	BCR-free survival
Wang <sup>48</sup>	2016	QUIPS	PCa	Observational study	Post treatment	Platelet to lymphocyte ratio (PLR)	PLR with PFS, CSS and OS n/a
Zacho <sup>49</sup>	2017	QUIPS	Localised PCa	Observational study	Anytime	Bone scan index	Time to CRPC
Berg <sup>50</sup>	2014	QUIPS validated	Under Active Surveillance	Observational study		ERG immunohisto-chemical staining	Overall AS progression, histopathologic progression

ADT, androgen deprivation therapy; AS, Active Surveillance; BCR, biochemical recurrence; CSS, cancer-specific survival; DFPs, diagnostic and prognostic factors; mCRPC, metastatic castration resistant prostate cancer; n/a, not available; OS, overall survival; PCa, prostate cancer; PFS, progression-free survival; PI-RADS, Prostate Imaging Reporting and Data System; PROBAST, Prediction model Risk Of Bias Assessment Tool; PSA, Prostate Specific Antigen; PTEN, Phosphatase and tensin homolog; QUADAS, Quality Assessment of Diagnostic Accuracy Studies; QUIPS, Quality in Prognostic Studies; RCT, Randomised control trial; RoB, risk of bias; WFA, Wisteria floribunda agglutinin.

quality assessments. The reports by Alvim *et al.*, Qu *et al.*, were assessed to have the highest quality by Tian *et al.*,<sup>53</sup> similar to our review. This illustrates that different quality assessment tools emphasise different criteria, which may result in small discrepancies. However, the overall conclusion for prognostic single factors was similar in our review and to the work of Tian *et al.*<sup>53</sup>

Similar issues have been identified for other urological cancers. For example, in kidney cancer, a large body of research was identified by Harrison *et al.*, with very few validated studies and lots of heterogeneity.<sup>54</sup> Schmitz-Dräger *et al.*, published an International Consultation of Urologic Disease/WHO Consensus manuscript where they identified that in bladder cancer one of the main limitations for the lack of incorporation of modern bladder cancer tests into clinical practice decision making is linked to the scarcity of 'good clinical practice guidelines' for the evaluation of diagnostic markers.

There is a need for improved guidance on development and validation of diagnostic markers.<sup>55</sup> To meet that need, we are developing the PIONEER DPF search tool, which will help researchers and clinicians to get a better understanding of the DPFs for PCa. The tool will not only summarise all relevant studies, but also provide information on the use and results of different RoB assessment tools, which will enable an understanding of the quality of published studies.

Future research should, therefore, focus on addressing the identified shortcomings such as heterogeneity, validation and poor RoB by designing more robust studies which consistently include RoB assessments such as PROBAST, QUIPS or QUADAS-2.

With the growing number of various therapeutic options, diagnosis and management of PCa requires an individualised approach to patient care. There is an unmet need for DPFs to guide decisions for optimal treatment and to predict which patients will benefit the most, from a particular management strategy. DPFs could

potentially enhance the quality of patient counselling, but currently most need additional evaluation and validation in properly designed studies. Our SR highlights the need for well-designed Real-World Evidence studies, while the PIONEER online search tool can inform the design of new research studies, through providing a rigorous evaluation of the methodological quality of the studies.

The main strength of this study are the extensive and comprehensive search and screening of the studies included. In addition, we are developing an online search tool which showcases the identified and assessed studies. It provides an overview of the available DPFs and enables interested stakeholders to search for DPFs. To our knowledge, this is the first study which has been performed with this extensive amount of literature.

### Patient and public involvement

This project has been overseen by a multistakeholder group part of the PIONEER Consortium. PIONEER brings together 35 key stakeholders from academic institutions, patient advocacy groups, European organisations, experts in legal data management, clinicians and pharmaceutical companies, as well as regulatory agencies, economics and ethics, and information and technology specialists. Patients and their family members are therefore involved and actively participate as an integral part of all research conducted by the PIONEER Consortium.

### Limitations

Even though this review included three searches and assessments by a multidisciplinary group of fourteen researchers, we recognise potential limitations. Studies were only included from 2014 onwards and DPFs developed before 2014 were not included. However, significant changes which influence the staging of PCa (i.e., Consensus Conference on Gleason Grading of Prostatic Carcinoma<sup>56</sup> have taken place in diagnostic and prognostic practice and patient management. This changed

**Table 5** DPFs with low risk of bias assessed with QUIPS

Study	Time	Biases			Applicability			Overall score
		Participation	Attrition	Prognostic factor	Outcome	Confounding	Statistical analysis and reporting	
Aguilera <sup>25</sup>	2015	Low	Low	Low	Low	Moderate	Low	Low
Alvim <sup>27</sup>	2019	Low	Low	Low	Low	Low	Low	Low
Bramhecha <sup>26</sup>	2019	Low	Moderate	Low	Low	Low	Low	Low
Bruce <sup>28</sup>	2016	Low	Moderate	Low	Low	Low	Low	Low
Francini <sup>29</sup>	2018	Low	Low	Low	Low	Low	Moderate	Low
Hamada <sup>30</sup>	2016	Low	Low	Low	Moderate	Low	Low	Low
Hashimoto <sup>31</sup>	2020	Low	Low	Low	Low	Low	Low	Low
Hung <sup>57</sup>	2017	Moderate	Low	Low	Low	Low	Low	Low
Kato <sup>32</sup>	2018	Low	Moderate	Low	Low	Low	Low	Low
Kluth <sup>33</sup>	2014	Low	Moderate	Low	Low	Low	Low	Low
Lara <sup>34</sup>	2014	Low	Low	Low	Low	Moderate	Low	Low
Lee <sup>35</sup>	2016	Low	Moderate	Low	Low	Low	Low	Low
Levesque <sup>36</sup>	2019	Low	Moderate	Low	Low	Low	Low	Low
Lin <sup>37</sup>	2017	Low	Moderate	Low	Low	Low	Low	Low
Loffeler <sup>38</sup>	2015	Low	Low	Low	Low	Low	Low	Low
Narang <sup>39</sup>	2017	Low	Moderate	Low	Low	Low	Low	Low
Ozden <sup>40</sup>	2017	Moderate	Low	Low	Low	Low	Low	Low
Pei <sup>41</sup>	2016	Low	Low	Moderate	Low	Low	Low	Low
Qu <sup>42</sup>	2016	Low	Low	Low	Low	Low	Low	Low
Qu <sup>43</sup>	2017	Low	Low	Low	Low	Low	Low	Low
Rizzardi <sup>58</sup>	2015	Low	Low	Low	Low	Low	Low	Low
Ruenauer <sup>44</sup>	2014	Low	Moderate	Moderate	Low	Low	Low	Low
Shimodaira <sup>45</sup>	2020	Low	Moderate	Low	Low	Low	Low	Low
Strand <sup>46</sup>	2015	Low	Moderate	Low	Low	Low	Low	Low
Takagi <sup>47</sup>	2017	Low	Low	Low	Low	Moderate	Low	Low
Wang <sup>48</sup>	2016	Low	Moderate	Low	Low	Low	Low	Low
Zacho <sup>49</sup>	2017	Moderate	Low	Low	Low	Moderate	Low	Low
Berg <sup>50</sup>	2014	Low	Low	Low	Low	Low	Low	Low

DPFs, diagnostic and prognostic factors; QUIPS, Quality in Prognostic Studies.

the staging of the patient population and therefore has an impact on DPFs.

In addition, there is a potential of subjectivity in the evaluation of the studies. Even though the studies have been assessed in duplicate, there might be variation across groups. However, given the overall moderate to high RoB, this does not influence the overall recommendation of the project.

## CONCLUSION

At present DPFs that are capable of significantly improving diagnosis and prognosis in PCa are an unmet need as most of the DPFs identified require additional evaluation and validation in properly designed studies before they can be recommended for use in clinical practice.

Well-designed real world evidence (RWE) studies can help to increase quality. Our SR aims to inform clinicians and patients about this rapidly evolving field, while the PIONEER online search tool for DPFs for PCa will enable researchers to perform future research, and to understand the quality of the current available studies.

## Author affiliations

<sup>1</sup>Translational and Oncology Research (TOUR), King's College London, Faculty of Life Sciences and Medicine, London, UK

<sup>2</sup>Department of Urology, University Hospitals Leuven, Leuven, Belgium

<sup>3</sup>Department of Urology, Metropolitan Hospital, Athens, Greece

<sup>4</sup>Unit of Urology/Division of Oncology, URI, IRCCS Ospedale San Raffaele, Milan, Italy

<sup>5</sup>Bayer AG, Berlin, Germany

<sup>6</sup>Department of Urology, Mid Cheshire Hospitals, NHS Foundation Trust, Crewe, UK

<sup>7</sup>Department of Minimally Invasive and Robotic Urologic Surgery and Kidney Transplantation, University of Florence, Florence, Italy



- <sup>8</sup>CDC Zdorovie, Rostov-on-Don, Russia
- <sup>9</sup>Dept. of Translational Medicine, Division of Urological Cancers, Lund University, Kristianstad Central Hospital, Malmö, Sweden
- <sup>10</sup>Flatiron Health, London, UK
- <sup>11</sup>Academic Urology Unit, University of Aberdeen, Aberdeen, UK
- <sup>12</sup>Department of Urology, Erasmus University Medical Center, Rotterdam, The Netherlands
- <sup>13</sup>Global Epidemiology, Bayer AG, Stockholm, Sweden
- <sup>14</sup>Sanofi, Paris, France
- <sup>15</sup>Global Medical Affairs Oncology, Real World Evidence, Bayer HealthCare Pharmaceuticals Inc, Whippany, New Jersey, USA
- <sup>16</sup>EORTC Headquarters, Brussels, Belgium
- <sup>17</sup>Department of Urology, University Vita e Salute-San Raffaele, Milan, Italy
- <sup>18</sup>Department of Translational Medicine, Lund University, Malmö, Sweden

**Twitter** Katharina Beyer @beyer\_katharina, Simone Scuderi @prostatePioneer, Riccardo Campi @Ric\_Campi, Kirill Shiranov @endourologist, Muhammad Imran Omar @drimranomar, Alex Asimwe @alexhabs and Sara J MacLennan @SajMacLennan

**Acknowledgements** PIONEER Consortium

**Contributors** KB, LM, ML, AH, FB, SS, MM, MIO, SM, MJR, BF, EV, ZD, AA, JZ, SJM, LC, JN; ABr, ABj and MVH conceptualised designed the review. Abstracts and full texts were reviewed and data extracted by KB, LM, ML, AH, FB, SS, MM, RH, AR, RC, IG, KS, TvdB and SA. Authors resolved disagreement by discussion where necessary. The risk of bias was assessed by KB, LM, ML, AH, FB, SS, MM, RH, AR, RC, IG, KS and SD. The manuscript was drafted by KB, LM, ML, AB, MVH and reviewed by KB, LM, ML, AH, FB, SS, MM, RH, AR, RC, IG, KS, SD, TvdB, MG, GG, MIO, SM, MJR, BF, EV, ZD, AA, JZ, SJM, LC, JN, ABr, ABj and MVH. The whole project was supervised and guided by JZ, SJM, LC, JN, ABr, ABj and MVH. PIONEER Consortium acts as a guarantor.

**Funding** PIONEER is funded through the IMI2 Joint Undertaking and is listed under Grant Agreement No. 777492 and is part of the Big Data for Better Outcomes Programme (BD4BO). IMI2 receives support from the European Union's Horizon 2020 research and innovation programme and the European Federation of Pharmaceutical Industries and Associations (EFPIA). The views communicated within are those of PIONEER. Neither the IMI nor the European Union, EFPIA, or any Associated Partners are responsible for any use that may be made of the information contained herein.

**Competing interests** None declared.

**Patient consent for publication** Not applicable.

**Ethics approval** This study does not involve human participants.

**Provenance and peer review** Not commissioned; externally peer reviewed.

**Data availability statement** No data are available. not applicable.

**Supplemental material** This content has been supplied by the author(s). It has not been vetted by BMJ Publishing Group Limited (BMJ) and may not have been peer-reviewed. Any opinions or recommendations discussed are solely those of the author(s) and are not endorsed by BMJ. BMJ disclaims all liability and responsibility arising from any reliance placed on the content. Where the content includes any translated material, BMJ does not warrant the accuracy and reliability of the translations (including but not limited to local regulations, clinical guidelines, terminology, drug names and drug dosages), and is not responsible for any error and/or omissions arising from translation and adaptation or otherwise.

**Open access** This is an open access article distributed in accordance with the Creative Commons Attribution Non Commercial (CC BY-NC 4.0) license, which permits others to distribute, remix, adapt, build upon this work non-commercially, and license their derivative works on different terms, provided the original work is properly cited, appropriate credit is given, any changes made indicated, and the use is non-commercial. See: <http://creativecommons.org/licenses/by-nc/4.0/>.

#### ORCID iDs

Katharina Beyer <http://orcid.org/0000-0002-8450-8850>  
 Francesco Barletta <http://orcid.org/0000-0003-3585-3217>  
 Megan Molnar <http://orcid.org/0000-0003-4937-2887>  
 Riccardo Campi <http://orcid.org/0000-0001-5237-0888>  
 Muhammad Imran Omar <http://orcid.org/0000-0002-1597-3126>  
 Steven MacLennan <http://orcid.org/0000-0002-2691-8421>

## REFERENCES

- Mottet NB, Briers E, Bolla M. *Members of the EAU – ESTRO – ESUR – SIOG prostate cancer guidelines panel. EAU – ESTRO – ESUR – SIOG guidelines on prostate cancer. EAU annual Congress.* Milan: EAU Guidelines Office, 2021.
- Bray F, Ferlay J, Soerjomataram I, et al. Global cancer statistics 2018: GLOBOCAN estimates of incidence and mortality worldwide for 36 cancers in 185 countries. *CA Cancer J Clin* 2018;68:394–424.
- Filella X, Fernández-Galan E, Fernández Bonifacio R, et al. Emerging biomarkers in the diagnosis of prostate cancer. *Pharmacogenomics Pers Med* 2018;11:83–94.
- Vedder MM, de Bekker-Grob EW, Lilja HG, et al. The added value of percentage of free to total prostate-specific antigen, PCA3, and a kallikrein panel to the ERSPC risk calculator for prostate cancer in prescreened men. *Eur Urol* 2014;66:1109–15.
- Leyten GHJM, Hessels D, Jannink SA, et al. Prospective multicentre evaluation of PCA3 and TMPRSS2-ERG gene fusions as diagnostic and prognostic urinary biomarkers for prostate cancer. *Eur Urol* 2014;65:534–42.
- Boegemann M, Stephan C, Cammann H, et al. The percentage of prostate-specific antigen (PSA) isoform [-2]proPSA and the Prostate Health Index improve the diagnostic accuracy for clinically relevant prostate cancer at initial and repeat biopsy compared with total PSA and percentage free PSA in men aged ≤65 years. *BJU Int* 2016;117:72–9.
- Bryant RJ, Sjöberg DD, Vickers AJ, et al. Predicting high-grade cancer at ten-core prostate biopsy using four kallikrein markers measured in blood in the protect study. *J Natl Cancer Inst* 2015;107. doi:10.1093/jnci/djv095. [Epub ahead of print: 11 04 2015].
- Eggner SE, Rumble RB, Armstrong AJ, et al. Molecular biomarkers in localized prostate cancer: ASCO guideline. *J Clin Oncol* 2020;38:1474–94.
- Gillessen S, Attard G, Beer TM, et al. Management of patients with advanced prostate cancer: report of the advanced prostate cancer consensus conference 2019. *Eur Urol* 2020;77:508–47.
- Omar MI, Roobol MJ, Ribal MJ, et al. Author correction: introducing pioneer: a project to harness big data in prostate cancer research. *Nat Rev Urol* 2020;17:482.
- Carlomagno N, Incollingo P, Tammaro V, et al. Diagnostic, predictive, prognostic, and therapeutic molecular biomarkers in third millennium: a breakthrough in gastric cancer. *Biomed Res Int* 2017;2017:1–11.
- Moher D, Liberati A, Tetzlaff J, et al. Preferred reporting items for systematic reviews and meta-analyses: the PRISMA statement. *PLoS Med* 2009;6:e1000097.
- Beyer K, Moris L, Lardas M, et al. Diagnostic and prognostic factors in patients with prostate cancer: a systematic review protocol. *BMJ Open* 2021;11:e040531.
- Whiting PF, Rutjes AWS, Westwood ME, et al. QUADAS-2: a revised tool for the quality assessment of diagnostic accuracy studies. *Ann Intern Med* 2011;155:529–36.
- Hayden JA, van der Windt DA, Cartwright JL, et al. Assessing bias in studies of prognostic factors. *Ann Intern Med* 2013;158:280–6.
- Eggner SE, Rumble RB, Armstrong AJ, et al. Molecular biomarkers in localized prostate cancer: ASCO guideline. *JCO* 2020;38:1474–94.
- Moons KGM, Wolff RF, Riley RD, et al. PROBAST: a tool to assess risk of bias and applicability of prediction model studies: explanation and elaboration. *Ann Intern Med* 2019;170:W1–33.
- Riley RD, Moons KGM, Snell KIE, et al. A guide to systematic review and meta-analysis of prognostic factor studies. *BMJ* 2019;364:k4597.
- Grooten WJA, Tseli E, Ång BO, et al. Elaborating on the assessment of the risk of bias in prognostic studies in pain rehabilitation using QUIPS-aspects of interrater agreement. *Diagn Progn Res* 2019;3:5.
- Hagiwara K, Tobisawa Y, Kaya T, et al. Wisteria floribunda agglutinin and its reactive-glycan-carrying prostate-specific antigen as a novel diagnostic and prognostic marker of prostate cancer. *Int J Mol Sci* 2017;18. doi:10.3390/ijms18020261. [Epub ahead of print: 26 Jan 2017].
- Kelly BD, Miller N, Sweeney KJ, et al. A circulating microRNA signature as a biomarker for prostate cancer in a high risk group. *J Clin Med* 2015;4:1369–79.
- Guinney J, Wang T, Laajala TD, et al. Prediction of overall survival for patients with metastatic castration-resistant prostate cancer: development of a prognostic model through a crowdsourced challenge with open clinical trial data. *Lancet Oncol* 2017;18:132–42.
- Joniau S, Spahn M, Briganti A, et al. Pretreatment tables predicting pathologic stage of locally advanced prostate cancer. *Eur Urol* 2015;67:319–25.
- Palsdottir T, Nordström T, Aly M, et al. A unified prostate cancer risk prediction model combining the Stockholm3 test and magnetic resonance imaging. *Eur Urol Oncol* 2019;2:490–6.

- 25 Aguilera A, Bañuelos B, Díez J, *et al.* Biochemical recurrence risk factors in surgically treated high and very high-risk prostate tumors. *Cent European J Urol* 2015;68:302–7.
- 26 Bramhecha YM, Rouzbeh S, Guérard K-P, *et al.* The combination of PTEN deletion and 16p13.3 gain in prostate cancer provides additional prognostic information in patients treated with radical prostatectomy. *Mod Pathol* 2019;32:128–38.
- 27 Alvim RG, Audenet F, Vertosick EA, *et al.* Performance prediction for surgical outcomes in partial nephrectomy using nephrometry scores: a comparison of arterial based complexity (ABC), renal, and Padua systems. *Eur Urol Oncol* 2018;1:428–34.
- 28 Bruce HM, Stricker PD, Gupta R, *et al.* Loss of AZGP1 as a superior predictor of relapse in margin-positive localized prostate cancer. *Prostate* 2016;76:1491–500.
- 29 Francini E, Gray KP, Xie W, *et al.* Time of metastatic disease presentation and volume of disease are prognostic for metastatic hormone sensitive prostate cancer (mHSPC). *Prostate* 2018;78:889–95.
- 30 Hamada R, Nakashima J, Ohori M, *et al.* Preoperative predictive factors and further risk stratification of biochemical recurrence in clinically localized high-risk prostate cancer. *Int J Clin Oncol* 2016;21:595–600.
- 31 Hashimoto T, Nakashima J, Inoue R, *et al.* The significance of micro-lymphatic invasion and pathological Gleason score in prostate cancer patients with pathologically organ-confined disease and negative surgical margins after robot-assisted radical prostatectomy. *Int J Clin Oncol* 2020;25:377–83.
- 32 Kato M, Kimura K, Hirakawa A, *et al.* Prognostic parameter for high risk prostate cancer patients at initial presentation. *Prostate* 2018;78:11–16.
- 33 Kluth LA, Xylinas E, Rieken M, *et al.* Does increasing the nodal yield improve outcomes in contemporary patients without nodal metastasis undergoing radical prostatectomy? *Urol Oncol* 2014;32:47.e1–47.e8.
- 34 Lara PN, Ely B, Quinn DI, *et al.* Serum biomarkers of bone metabolism in castration-resistant prostate cancer patients with skeletal metastases: results from SWOG 0421. *J Natl Cancer Inst* 2014;106:dju013.
- 35 Lee S, Kim KB, Jo JK, *et al.* Prognostic value of focal positive surgical margins after radical prostatectomy. *Clin Genitourin Cancer* 2016;14:e313–9.
- 36 Lévesque E, Caron P, Lacombe L, *et al.* A comprehensive analysis of steroid hormones and progression of localized high-risk prostate cancer. *Cancer Epidemiol Biomarkers Prev* 2019;28:701–6.
- 37 Lin Y-L, Li Y-L, Ma J-G. Aberrant promoter methylation of Protocadherin8 (PCDH8) in serum is a potential prognostic marker for low Gleason score prostate cancer. *Med Sci Monit* 2017;23:4895–900.
- 38 Löffeler S, Weedon-Fekjaer H, Wang-Hansen MS, *et al.* "Natural course" of disease in patients with metastatic castrate-resistant prostate cancer: Survival and prognostic factors without life-prolonging treatment. *Scand J Urol* 2015;49:440–5.
- 39 Narang AK, Trieu J, Radwan N, *et al.* End-of-radiation PSA as a novel prognostic factor in patients undergoing definitive radiation and androgen deprivation therapy for prostate cancer. *Prostate Cancer Prostatic Dis* 2017;20:203–9.
- 40 Ozden C, Aktas BK, Bulut S, *et al.* Effect of age on biochemical recurrence after radical prostatectomy. *Kaohsiung J Med Sci* 2017;33:91–5.
- 41 Pei X-Q, He D-lin, Tian G, *et al.* Prognostic factors of first-line docetaxel treatment in castration-resistant prostate cancer: roles of neutrophil-to-lymphocyte ratio in patients from northwestern China. *Int Urol Nephrol* 2017;49:629–35.
- 42 Qu Y, Zhang C, Du E, *et al.* Pim-3 is a critical risk factor in development and prognosis of prostate cancer. *Med Sci Monit* 2016;22:4254–60.
- 43 Qu F, Xie W, Nakabayashi M, *et al.* Association of AR-V7 and prostate-specific antigen RNA levels in blood with efficacy of abiraterone acetate and enzalutamide treatment in men with prostate cancer. *Clin Cancer Res* 2017;23:726–34.
- 44 Rüenauer K, Menon R, Svensson MA, *et al.* Prognostic significance of YWHAZ expression in localized prostate cancer. *Prostate Cancer Prostatic Dis* 2014;17:310–4.
- 45 Shimodaira K, Nakashima J, Nakagami Y, *et al.* Prognostic value of platelet counts in patients with metastatic prostate cancer treated with endocrine therapy. *Urol J* 2020;17:42–9.
- 46 Strand SH, Hoyer S, Lynnerup A-S, *et al.* High levels of 5-hydroxymethylcytosine (5hmC) is an adverse predictor of biochemical recurrence after prostatectomy in ERG-negative prostate cancer. *Clin Epigenetics* 2015;7:111.
- 47 Takagi M, Demizu Y, Terashima K, *et al.* Long-term outcomes in patients treated with proton therapy for localized prostate cancer. *Cancer Med* 2017;6:2234–43.
- 48 Wang Y, Xu F, Pan J, *et al.* Platelet to lymphocyte ratio as an independent prognostic indicator for prostate cancer patients receiving androgen deprivation therapy. *BMC Cancer* 2016;16:329.
- 49 Zacho HD, Gade M, Mortensen JC, *et al.* Bone scan index is an independent predictor of time to castration-resistant prostate cancer in newly diagnosed prostate cancer: a prospective study. *Urology* 2017;108:135–41.
- 50 Berg KD, Vainer B, Thomsen FB, *et al.* ERG protein expression in diagnostic specimens is associated with increased risk of progression during active surveillance for prostate cancer. *Eur Urol* 2014;66:851–60.
- 51 Lazzeri M, Haese A, de la Taille A, *et al.* Serum isoform [-2]proPSA derivatives significantly improve prediction of prostate cancer at initial biopsy in a total PSA range of 2–10 ng/ml: a multicentric European study. *Eur Urol* 2013;63:986–94.
- 52 Aladwani M, Lophatananon A, Ollier W, *et al.* Prediction models for prostate cancer to be used in the primary care setting: a systematic review. *BMJ Open* 2020;10:e034661.
- 53 Tian S, Lei Z, Gong Z, *et al.* Clinical implication of prognostic and predictive biomarkers for castration-resistant prostate cancer: a systematic review. *Cancer Cell Int* 2020;20:409.
- 54 Harrison H, Thompson RE, Lin Z, *et al.* Risk prediction models for kidney cancer: a systematic review. *Eur Urol Focus* 2021;7:1380–1390.
- 55 Schmitz-Dräger BJ, Droller M, Lokeshwar VB, *et al.* Molecular markers for bladder cancer screening, early diagnosis, and surveillance: the WHO/ICUD consensus. *Urol Int* 2015;94:1–24.
- 56 Epstein JI, Egevad L, Amin MB, *et al.* The 2014 international society of urological pathology (ISUP) consensus conference on Gleason grading of prostatic carcinoma: definition of grading patterns and proposal for a new grading system. *Am J Surg Pathol* 2016;40:244–52.
- 57 Hung S-C, Yang C-K, Cheng C-L, *et al.* Long-term oncologic outcomes of robotic-assisted radical prostatectomy by a single surgeon. *Anticancer Res* 2017;37:4157–64.
- 58 Rizzardi AE, Rosener NK, Koopmeiners JS, *et al.* Evaluation of protein biomarkers of prostate cancer aggressiveness. *BMC Cancer* 2014;14:244.