





BMJ Open Emergency medicine physician supervision and mortality among patients receiving care from non-physician clinicians in a task-sharing model of emergency care in rural Uganda: a retrospective analysis of a single-centre training programme

Brian Rice ¹, Ashley Pickering ², Colleen Laurence,³ Prisca Mary Kizito ^{4,5}, Rebecca Leff ⁶, Steven Jonathan Kisingiri,^{7,8} Charles Ndyamwijuka,⁷ Serena Nakato,^{7,9} Lema Felix Adriko,⁹ Mark Bisanzo,¹⁰ on behalf of the Global Emergency Care Investigator Group

To cite: Rice B, Pickering A, Laurence C, *et al*. Emergency medicine physician supervision and mortality among patients receiving care from non-physician clinicians in a task-sharing model of emergency care in rural Uganda: a retrospective analysis of a single-centre training programme. *BMJ Open* 2022;**12**:e059859. doi:10.1136/bmjopen-2021-059859

► Prepublication history and additional supplemental material for this paper are available online. To view these files, please visit the journal online (<http://dx.doi.org/10.1136/bmjopen-2021-059859>).

Received 05 January 2022
Accepted 08 June 2022



© Author(s) (or their employer(s)) 2022. Re-use permitted under CC BY-NC. No commercial re-use. See rights and permissions. Published by BMJ.

For numbered affiliations see end of article.

Correspondence to

Dr Ashley Pickering;
Ashleypickering@gmail.com

ABSTRACT

Objectives To assess the association between emergency medicine physician supervision and 3-day mortality for patients receiving care from non-physician clinicians in a task-sharing model of emergency care in rural Uganda.

Design Retrospective cohort analysis with multivariable logistic regression.

Setting Single rural Ugandan emergency unit.

Participants All patients presenting for care from 2009 to 2019.

Interventions Three cohorts of patients receiving care from non-physician clinicians had three different levels of physician supervision: 'Direct Supervision' (2009–2010) emergency medicine physicians directly supervised all care; 'Indirect Supervision' (2010–2015) emergency medicine physicians were consulted as needed; 'Independent Care' (2015–2019) no emergency medicine physician supervision.

Primary outcome measure Three-day mortality.

Results 38 033 ED visits met inclusion criteria. Overall mortality decreased significantly across supervision cohorts ('Direct' 3.8%, 'Indirect' 3.3%, 'Independent' 2.6%, $p < 0.001$), but so too did the rates of patients who presented with ≥ 3 abnormal vitals ('Direct' 32%, 'Indirect' 19%, 'Independent' 13%, $p < 0.001$). After controlling for vital sign abnormalities, 'Direct' and 'Indirect' supervision were both significantly associated with reduced OR for mortality ('Direct': 0.57 (0.37 to 0.90), 'Indirect': 0.71 (0.55 to 0.92)) when compared with 'Independent Care'. Sensitivity analysis showed that this mortality benefit was significant for the minority of patients (17.2%) with ≥ 3 abnormal vitals ('Direct': 0.44 (0.22 to 0.85), 'Indirect': 0.60 (0.41 to 0.88)), but not for the majority (82.8%) with two or fewer abnormal vitals ('Direct': 0.81 (0.44 to 1.49), 'Indirect': 0.82 (0.58 to 1.16)).

STRENGTHS AND LIMITATIONS OF THIS STUDY

- ⇒ Data from the largest and longest standing emergency care patient database with mortality outcomes, as well as the only database of emergency care outcomes for non-physician clinician care, published to date in Africa.
- ⇒ The transition from physician-supervised to independent non-physician clinician care generated a unique natural experiment.
- ⇒ This is a single-site study conducted at a rural, district-level hospital.
- ⇒ Patient-level physician supervision data are lacking.
- ⇒ Logistic regression models are only partially able to control for the changing baseline of population health during the study period.

Conclusions Emergency medicine physician supervision of emergency care non-physician clinicians is independently associated with reduced overall mortality. This benefit appears restricted to the highest risk patients based on abnormal vitals. With over 80% of patients having equivalent mortality outcomes with independent non-physician clinician emergency care, a synergistic model providing variable levels of emergency medicine physician supervision or care based on patient acuity could safely address staffing shortages.

INTRODUCTION

Global recognition of the need to develop emergency care is growing.^{1 2} In low and middle-income countries (LMIC), physician shortages make the provision of medical care and, in particular, emergency care problematic, with the greatest challenge centred

in Sub-Saharan Africa (SSA).^{3–5} Emergency care needs remain largely unmet throughout many LMICs, including Uganda.^{5–8} Based on the estimate that 57% of deaths occurring in low-income countries are from conditions treatable with emergency care, approximately 160 000 Ugandans' lives could have been saved by provision of emergency care in 2019.^{9–10} Emergency care in Uganda is largely limited by physician shortages, as there are 1.68 physicians per 10 000 people, among the lowest rates worldwide.¹¹ Uganda has placed a priority on developing emergency care over the next 5 years, estimating that 454 specialist emergency care physicians will be required by 2025.¹² Emergency care specialty training in Uganda began in 2017 and currently certifies between 5 and 10 Ugandan emergency medicine specialists per year.¹³ This leaves an enormous training gap with between 45 and 90 years of training needed to produce emergency medicine specialists to meet the projected 5-year staffing demands.

One solution to address physician shortage that has been widely advocated and implemented in SSA is 'task-sharing' or delegating tasks to cadres of new or existing providers, often non-physician clinicians, who do not have the broad-ranging, expensive and lengthy training of physicians.^{14–20} The WHO advocates for non-physician clinicians that are 'adequately trained, supported and supervised'.^{18–20} Though non-physician clinicians are currently providing surgical specialty, obstetric and HIV care throughout SSA,^{21–27} there has been limited application of non-physician clinician cadres to offset emergency care provider shortages.^{19–28–29} High-income countries have compensated for regionally inadequate physician numbers and uneven distribution of emergency physicians by adopting physician supervised non-physician clinicians in larger emergency units and in some cases non-physician clinician practice with remote physician supervision in smaller rural hospitals.^{30–33} Data and protocols to guide implementation of emergency care non-physician clinician training and practice in LMICs, where emergency medicine is largely newly developing, and emergency medicine physicians are typically not available, are highly limited.

Few studies exist addressing training of non-physician clinicians for roles in the African acute care settings outside of trainings focused on specific obstetric, surgical or anaesthesia procedures,^{34–37} while others find that emergency and acute care training is lacking in non-physician clinician education in many SSA countries including Uganda.^{34–38} There are documentation a few short courses designed to teach non-physician clinicians' emergency care skills in SSA.^{39–42} While our research group has published on an emergency care non-physician clinician training programme and its associated outcomes, we are not aware of any additional studies documenting a comprehensive emergency care non-physician clinicians training programme in an LMIC.^{29–43–48} Consistent with this limited evidence base, no standards exist describing if, when or how to transition to reduced supervision or independent non-physician clinician care following initial

training. This represents a major limitation in the ability to implement non-physician clinician training, supervision and uptake into health systems in a safe, effective and evidence-based manner.

While health systems are evolving in Uganda over the last decade so too is the health of the general population. Uganda's national crude death rates decreased by 63% across all age groups (10.2/1000 in 2009 to 6.4/1000 persons in 2019) during the study period.⁴⁹ Concurrently, life expectancy increased by 6.8 years and rates of malaria and HIV infection decreased.⁴⁹ Any longitudinal evaluation of mortality occurring during this time period, therefore, needs to take into account this changing baseline.

Emergency care has been delivered by non-physician clinicians in Uganda since 2009 in a training programme that has transitioned from directly supervised to independent non-physician clinician care. The objective of this study was to test the hypothesis that increasing levels of emergency medicine physician supervision for three cohorts of non-physician clinicians were independently associated with reduced 3-day patient mortality. Logistic regression modelling was used to control for the changing baseline health of the Ugandan population. Sensitivity analysis was performed to account for missing data and to attempt to define which populations of patients had mortality outcomes impacted by physician supervision.

METHODS

Study setting

All data come from the emergency unit at Karoli Lwanga Hospital, a rural district hospital located in the town of Nyakibale in the Rukungiri District of southwest Uganda. The hospital has a six-bed emergency unit that opened in 2008 and treats 300–700 patients per month arriving between 8:00 and midnight every day of the year. Since 2009, the emergency unit has been staffed by non-physician clinicians who received training from emergency medicine physicians working with Global Emergency Care (GEC). The non-physician clinicians are nurses who have completed a 2-year advanced training course in emergency care described in detail elsewhere by Hammerstedt *et al.*²⁹ While the course is currently administered in conjunction with Mbarara University of Science and Technology (MUST), the non-physician clinicians in this cohort study were trained as part of the pilot programme that began through a collaboration between GEC and Karoli Lwanga Hospital. GEC, a US-based 501(c)3 non-governmental organisation, has run a 2-year emergency care specialty non-physician clinician training programme since 2009, and currently does so in collaboration with MUST.

Supervision of the non-physician clinicians changed over time generating three cohorts: 'Direct Supervision', 'Indirect Supervision' and 'Independent Care'. 'Direct Supervision' occurred from November 2009 to April 2010 when a single US-trained emergency medicine physician practicing with a Ugandan license was on site everyday

and directly supervised non-physician clinician care and supplemented with clinical care in a model similar to US residency training. 'Indirect Supervision' occurred from July 2010 to November 2015. During this period, a volunteer US-trained emergency medicine physician was on site for approximately 85% of the weeks; however, they were present in a teaching role only and provided no direct patient care. They were available for consultation on an ad hoc basis and consultation was based on non-physician clinician discretion. 'Independent Care' occurred from December 2015 to December 2019, and non-physician clinicians provided clinical care without any onsite emergency medicine physician. During the entire study period, no Ugandan physicians were assigned to the emergency unit. Hospital physicians were available in a similar manner throughout the study period for consultation for patients who required surgery, did not respond to initial treatments, or in whom there was considerable diagnostic uncertainty. Throughout the study period, non-physician clinicians admitted patients to the same hospital medical and surgical wards, which were staffed by Ugandan physicians with standard levels of training and no connection to GEC. Resource availability was constant over the study period and with resource utilisation by clinicians in this emergency unit described in detail elsewhere.⁴³

Patient and public involvement

The non-physician clinician training programme was originally developed in response to several years of clinical emergency medicine experience and ongoing health-care staffing shortages in Uganda. The positive response of patients, staff and administrators at Karoli Lwanga Hospital to the training programme and their interest in improving patient care led to ongoing research and programme evaluation. Patients and the public were not involved in the design of the study; however, outcome measures are explicitly patient oriented. Results have been and will continue to be disseminated through open-access publications to allow local clinicians, administrators, policymakers and researchers to benefit.

Data collection

GEC maintained a group of trained research associates who prospectively collected quality assurance data on all Karoli Lwanga Hospital emergency unit patient visits. Collected data included demographics, vital signs, laboratory and radiology testing, disposition as well as 3-day follow-up vital status (mortality) for all admitted and discharged patients. On the third day following initial evaluation in the emergency unit, patients admitted to the hospital were visited in person, and patients discharged from the emergency unit or ward were contacted via phone. This follow-up protocol included 7 consecutive days of calling all patients on the phone (if they had a phone) before considering them lost to follow-up and is described in detail elsewhere.²⁹ Trained research assistants entered data using Microsoft Excel from 1 January

2010 to 23 March 2012, and Microsoft Access from 24 March 2012 to 31 December 2019.

Data analysis

A cohort study was done using retrospective analysis of prospectively collected data abstracted from the Karoli Lwanga Hospital emergency unit quality assurance database, including all consecutive patients presenting to the emergency unit from November 2009 until December 2019. All patients missing age, gender, disposition and 3-day follow-up were excluded from analysis. Patients who were dead on arrival (lacked vital signs with no resuscitation or interventions attempted) and patients who were transferred or left against medical advice did not receive follow-up by protocol and, thus, were also excluded from analysis. All other patients of all ages and dispositions were included. Age, gender, vital signs, malaria testing, HIV status, gestalt assessment of clinical condition and year of service were recorded for all patients. Data were abstracted, cleaned and analysed by a single researcher (BR) using Stata V.16.1 (StataCorp, College Station, Texas). Missing data were imputed using multiple imputation by chained equations in Stata. Ten data sets were imputed and combined, with disposition and age groups used as auxiliary variables to predict missingness based on the results described below. Because only 2 months of data existed for 2009, and no data were collected for 3 months in 2010 while the programme transitioned from 'Direct' to 'Indirect', the years 2009 and 2010 were both coded as 2010 for the continuous 'Year' variable included in that model. Twelve variables were included for the final model meeting the minimal criterion of approximately 10 events per variable ($n=1169$ events overall).⁵⁰ All variables with a univariate p value less than 0.15 were included in the final model. Area under receiver operating characteristics curve (AUROC), Hosmer-Lemeshow goodness of fit and Brier score were all calculated for logistic regression models. No a priori power or sample size calculations were performed as all available records were included in analysis. Continuous variables were tested for significance using one-way Analysis of Variance and proportions were compared using χ^2 .

RESULTS

Overall, 49 315 patient visits occurred from 2009 to 2019, and 38 033 (77.1%) met criteria for inclusion for analysis. Inclusion and exclusion criteria are shown in figure 1.

Patient characteristics stratified by cohorts of patients receiving non-physician emergency care with different levels of emergency medicine physician supervision (as described in the Methods section above) are shown in table 1.

There were significant differences in every characteristic across the cohorts except for gender. As the study progressed, there were fewer paediatric patients, more adult and elderly patients, fewer patients with malaria, more patients with HIV and more patients with abnormal

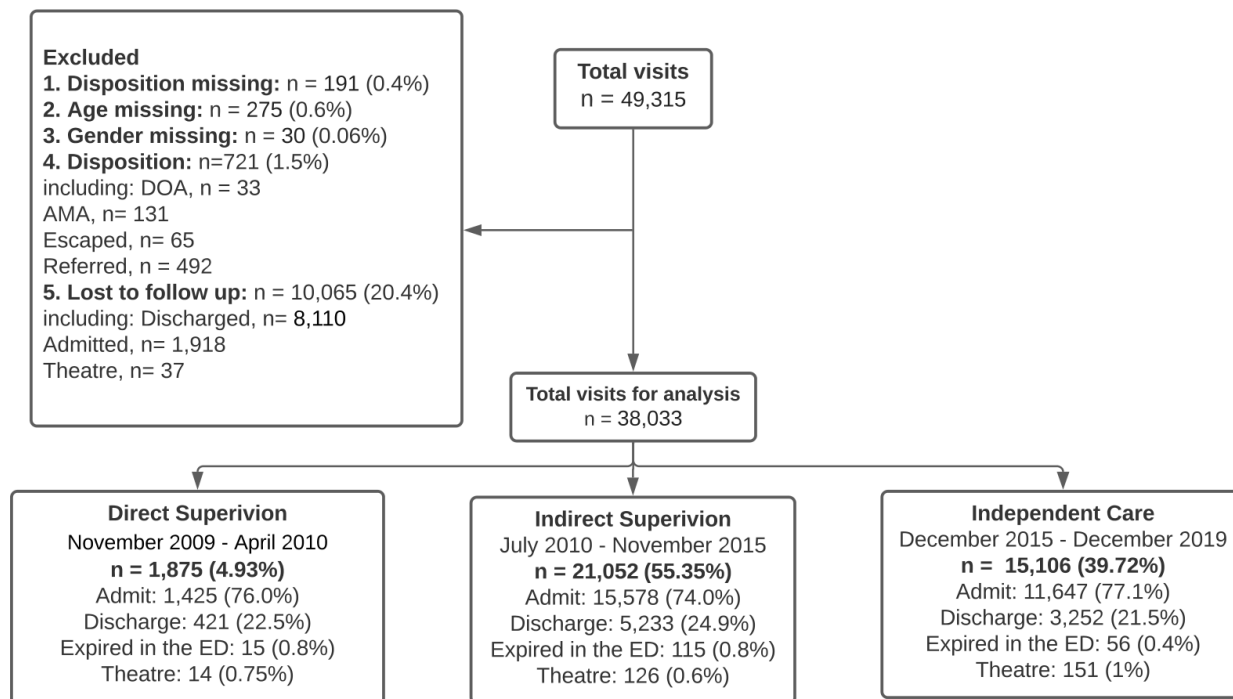


Figure 1 Patient flow diagram.

vitals. Missingness was relatively low for all vital signs (0.9%–8.3%) except blood pressure which had a much higher rate of missingness (19.6%–24.5%). That missingness was almost entirely restricted to the paediatric population (0–5 years old: 88.6% (n=6803) missing blood pressure, 6–12 years old: 39.9% (n=922) missing blood pressure, 13 years and older: 2.7% (n=766) missing blood pressure).

The 3-day mortality for the programme overall (2009–2019) was 3.1% (n=1169 deaths), and mortality decreased significantly as the programme transitioned from ‘Direct Supervision’ to ‘Indirect Supervision’ to ‘Independent Care’ (3.8% (n=72), 3.3% (n=698), 2.6% (n=399), respectively, $p < 0.001$). Simultaneously, across those time periods, patients presented with significantly fewer abnormal vital signs (figure 2). Over the entire programme, mortality increased monotonically with each additional abnormal vital sign (zero abnormal=0.7% (n=66), one abnormal=1.7% (n=222), two abnormal=3.4% (n=321), three or more=8.6% (n=561), $p < 0.001$).

Given this changing baseline in patient mortality and prevalence of vital sign abnormalities, a logistic regression model was developed to determine whether ‘Direct Supervision’ and/or ‘Indirect Supervision’ was independently associated with increased or decreased mortality as compared with ‘Independent Care’.

The development of this model incorporated the finding that there was a strong association with missing vital signs and mortality with a monotonic increase in mortality for each missing vital sign (zero missing: 2.7% (n=746), one missing: 3.3% (n=319), two missing: 7.0% (n=66), three or more missing: 7.5% (n=38), $p < 0.001$). The highest mortality population (‘Expired in emergency

unit with 100% mortality) had over half the patients (55.4%, n=103) missing one or more vitals. Therefore, when we attempted complete case analysis for logistic regression, only 70.7% of patients (n=26869) were included in the model (including only 9.7% of children under 5 years old) and only 63.4% (n=741) of deaths were included. Therefore, complete case analysis was rejected in favour of multiple imputation (complete case analysis results are available in online supplemental appendices 1; 2).

Using multiple imputation by chained equations over 10 data sets (as described in the Methods section), we were able to produce a logistic regression model that included all 38033 patients (table 2).

This model had excellent discrimination (AUROC: 0.87 (0.85 to 0.88)), goodness of fit (Hosmer-Lemeshow: 0.991) and accuracy (Brier score: 0.0256). This model found that both ‘Direct’ and ‘Indirect’ supervision were significantly independently associated with reduced OR for mortality (‘Direct’: 0.57 (0.37 to 0.90), ‘Indirect’: 0.71 (0.55 to 0.92)) when compared with ‘Independent Care’. As a sensitivity analysis, patients with and without three or more abnormal vital signs were analysed separately (figure 3).

For the minority of patients with three or more abnormal vital signs (17.2%, n=6451), both ‘Direct’ and ‘Indirect’ supervision were significantly independently associated with reduced OR for mortality (‘Direct’: 0.44 (0.22 to 0.85), ‘Indirect’: 0.60 (0.41 to 0.88)). However, for the majority of patients who had two or fewer abnormal vital signs (82.8%, n=31492), there was no significant difference in OR for mortality (‘Direct’: 0.81 (0.44 to 1.49), ‘Indirect’: 0.82 (0.58 to 1.16)).

Table 1 Patient characteristics

Characteristic	Direct supervision cohort (n=1875)	Indirect supervision cohort (n=21 052)	Independent care cohort (n=15 106)	P value
Age, mean (SD)	25.9 (23.5)	28.8 (24.1)	32.9 (24.9)	<0.001*
Age group				
Under 5 years old, % (n)	26.7% (501)	21.2% (4454)	14.5% (2196)	<0.001
5–17 years old, % (n)	15.2% (285)	15.8% (3325)	14.7% (2219)	
18–64 years old, % (n)	48.3% (910)	51.7% (10890)	56.5% (8538)	
≥65 years old, % (n)	9.6% (179)	11.3% (2383)	14.3% (2153)	
HIV-positive, % (n)	1.9% (35)	5.6% (1182)	6.9% (1045)	<0.001
Malaria parasites on blood smear, % (n)	24.5% (460)	18.5% (3903)	5.6% (848)	<0.001
Gender—female, % (n)	47.9% (898)	46.2% (9719)	46.6% (7046)	0.29
Complete vital signs				
Under 5 years old, % (n)	36.1% (190)	8.5% (401)	8.5% (205)	<0.001
5–12 years old, % (n)	79.6% (86)	57.8% (758)	49.8% (444)	<0.001
13 years and older, % (n)	88.1% (1092)	87.8% (13163)	90.4% (10672)	<0.001
Vital sign abnormalities				
Blood pressure				
Normal, % (n)	58.2% (1,092)	63.5% (13,368)	72.6% (10,959)	<0.001
Hypotensive, % (n)	21.4% (401)	12.0% (2,528)	7.9% (1,194)	
Missing, % (n)	20.4% (382)	24.5% (5,156)	19.6% (2,953)	
Respiratory rate				
Normal, % (n)	38.9% (730)	53.5% (11,266)	66.2% (10,000)	<0.001
Tachypnoea, % (n)	52.8% (990)	43.3% (9,121)	27.7% (4,181)	
Missing, % (n)	8.27% (155)	3.16% (665)	6.12% (925)	
Oxygen saturation				
Normal, % (n)	83.7% (1,569)	80.6% (16,965)	84.2% (12,722)	<0.001
Hypoxic, % (n)	13.2% (248)	12.0% (2,533)	12.7% (1,915)	
Missing, % (n)	3.1% (58)	7.4% (1,554)	3.1% (469)	
Heart rate				
Normal, % (n)	48.9% (971)	62.5% (13,161)	64.2% (9,703)	<0.001
Tachycardic, % (n)	49.0% (918)	36.6% (7,695)	33.8% (5,112)	
Missing, % (n)	2.1% (40)	0.9% (196)	1.93% (291)	
Temperature				
Normal, % (n)	38.4% (719)	55.3% (11,646)	54.6% (8,250)	<0.001
Hypothermic, % (n)	35.7% (670)	27.5% (5,779)	29.4% (4,444)	
Febrile, % (n)	22.4% (420)	15.7% (3,304)	13.6% (2,049)	
Missing, % (n)	3.5% (66)	1.5% (323)	2.4% (363)	

*ANOVA used for significance test; all others use χ^2 . ANOVA, analysis of variance.

DISCUSSION

This study of a non-physician clinician emergency care training programme in rural Uganda demonstrates that direct and indirect supervision by emergency medicine physicians reduced overall mortality as compared with independent non-physician clinician emergency care. Sensitivity analysis showed that this benefit was restricted

to the most severely ill subset of patients—as defined by abnormal vitals—with independent non-physician clinician care having similar outcomes to physician-supervised care for the vast majority of patients. These findings are consistent with a prior study by our author group showing the mortality benefit for direct emergency medicine physician supervision was restricted to the most severely

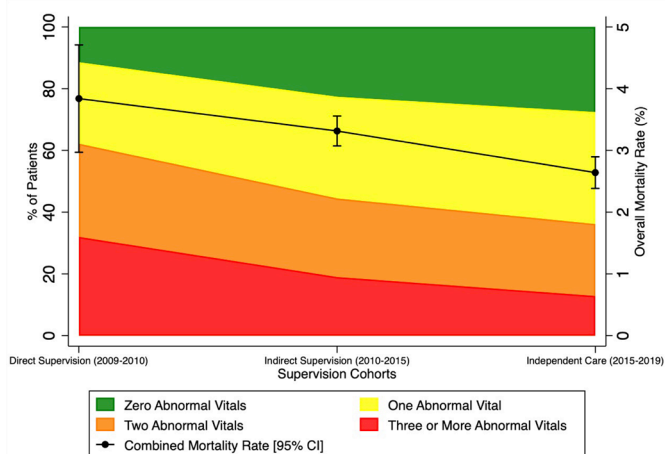


Figure 2 Mortality and vital sign abnormalities across supervision cohorts.

ill subset of children under 5 years of age.⁴⁶ We are not aware of any other studies addressing mortality rates of patients cared for by emergency care specialty trained non-physician clinicians in similar LMIC settings. This finding has potentially profound implications for policy to maximise workforce potential in the rapidly developing field of emergency care in Uganda and in similar settings.

One of the fundamental challenges of our analysis was the rapidly changing background of the health system in Uganda during the study period (2009–2019). Many of the most profound shifts seen in our study likely reflect the overall changes in Ugandan healthcare. As shown in figure 2, overall mortality significantly ($p < 0.001$) decreased by almost 70% during the study period. While impressive, this finding is consistent with the 63% reduction in national crude death rate during the study period.⁴⁹ Similarly, we saw many demographic shifts in our population over time (table 1) including fewer

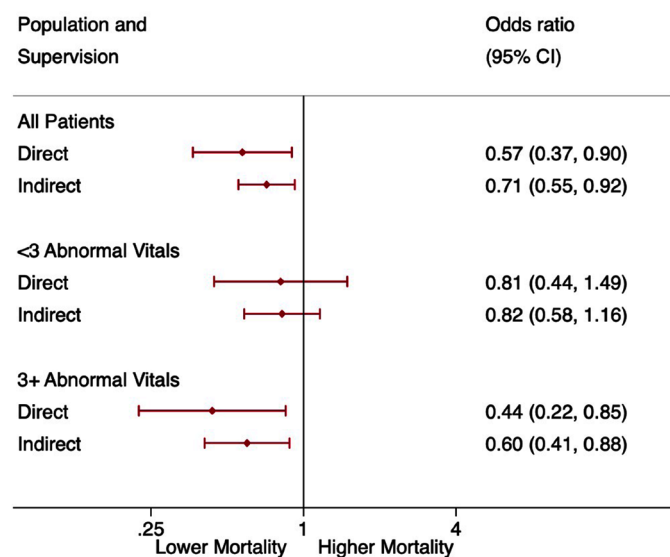


Figure 3 ORs for mortality comparing direct supervision and indirect supervision with independent care.

Table 2 Logistic regression model of mortality comparing supervision cohorts

	Multiple imputation (n=38033)		
	OR	95% CI	P value
Age group			
Under 5 years old	1.29	0.77 to 1.14	0.008
5–12 years old	0.49	0.55 to 0.90	<0.001
18–64 years old	REF		
≥65 years old	1.63	1.37 to 1.93	<0.001
HIV			
Negative	REF		
Positive	1.84	1.51 to 2.25	<0.001
Malaria			
Negative	REF		
Positive	0.93	0.78 to 1.12	0.708
Gender			
Male	REF		
Female	0.71	0.62 to 0.80	<0.001
Oxygen saturation			
Normal	REF		
Hypoxic	2.95	2.55 to 3.41	<0.001
Respiratory rate			
Normal	REF		
Tachypnoea	1.82	1.58 to 2.11	<0.001
Heart rate			
Normal	REF		
Tachycardic	1.18	1.03 to 1.36	0.02
Blood pressure			
Normotensive	REF		
Hypotensive	1.65	1.39 to 1.96	0.027
Temperature			
Normal			
Hypothermic	2.09	1.81 to 2.42	<0.001
Febrile	0.80	0.66 to 0.98	0.034
Year	0.90	0.86 to 0.95	<0.001
Clinical impression			
‘Not sick’			
‘Sick’	4.81	3.91 to 5.90	<0.001
‘Toxic’	35.6	27.8 to 45.5	<0.001
Supervision			
Independent	REF		
Direct	0.57	0.37 to 0.90	0.015
Indirect	0.71	0.55 to 0.92	0.01

emergencies in children under 5, more elderly patients and reduced rates of malaria. Again, these are consistent with Ugandan national trends over that time period.⁴⁹

Logistic regression models were developed control for confounding variables. As mentioned in the Results section, high rates of missing data for the highest mortality patients and children under 5 years old made

complete-case analysis a poor fit for our data set. Multiple imputation was eventually selected as the optimal method for handling missing data.^{51 52} Single (deterministic) imputation models were developed but ultimately discarded based on poor performance. The multiple imputation model had excellent characteristics (discrimination, goodness of fit and accuracy) and showed that both 'Direct Supervision' and 'Indirect Supervision' reduced programme mortality overall as compared with 'Independent Care'. This is an expected finding, as no argument exists in this manuscript or elsewhere suggesting complete equality between physician and non-physician clinician training, practice or outcomes. Rather, this finding clearly highlights the importance of the scaling-up of the ongoing emergency medicine physician training efforts in Uganda to reduce mortality in emergencies nationwide.

While emergency medicine physician care for all emergency patients is ideal, the current rate of emergency medicine specialist training, health system funding and high demand for emergency medicine specialist physicians at training institutions and in administrative roles, means that the ideal of emergency medicine specialist clinical care in emergency units throughout Uganda may be decades away from being realised. Therefore, optimising the role of non-physician clinicians can help address the current gap between emergency care patients and providers.

Sensitivity analysis was performed to attempt to identify which subset of patients might benefit most from physician supervision. With prior studies showing the benefit of direct physician supervision of non-physicians was limited to severely ill paediatric patients, our sensitivity analysis involved stratifying by vital signs.⁴⁶ We found that minority of patients with three or more abnormal vital signs (16.7%, n=6541) had significantly reduced OR of mortality, and that reduction was enough to create a significant mortality impact for those supervision cohorts overall. However, when the majority of patients with two or fewer abnormal vital signs were looked at separately, there was no significant reduction in mortality when comparing either 'Direct Supervision' or 'Indirect Supervision' to 'Independent Care'. We believe that this finding could be used at triage to immediately identify patients most likely to receive benefit from emergency medicine physician supervision in clinical situations where that resource is too limited to be provided for all patients.

We strongly support the ongoing development of emergency medicine specialty training for physicians in Uganda to help achieve the ultimate goal of providing emergency medicine physician clinical care for all patients. However, current emergency care staffing shortages in Uganda and elsewhere in SSA are likely to persist for decades to come. Augmenting the physician workforce with emergency care specialty-trained non-physician clinicians—who can be trained more rapidly, at a lower cost, and are more likely to work in rural areas—is a clear path forward to addressing the immediate emergency

care needs faced by millions of Ugandans today.^{3 20 38 53} Our analysis shows that a synergy between these groups is possible: non-physician clinicians can safely deliver independent care for the majority of less severely ill patients without causing excess mortality, while emergency medicine physicians can provide or supervise non-physician clinician care to reduce mortality for the most severely ill subset of patients.

Limitations

This is a single-centre, retrospective study of an emergency unit database. Mortality follow-up was limited to 3 days. While 1-week and 1-month mortality is undoubtedly important, 3-day follow-up was chosen both to minimise loss to follow-up in a setting where most patients do not have consistent ability to receive phone calls and because follow-up after 3 days was thought to be less reflective of outcomes related to acute care provided in the emergency unit. Inpatient mortality was affected not just by emergency unit care but also by hospital ward care. However, this care was provided similarly throughout the study, making it unlikely to bias outcomes in comparisons between cohorts. Multiple imputation is a widely accepted method for dealing with missing data, but even with auxiliary variables used to improve the likelihood of meeting the missing at random assumption, any approach to missing data is imperfect with multiple imputation being no exception. Finally, there was a high loss to follow-up in discharged patients over the duration of the study (47.7%, n=8110). Most of this loss to follow-up was due to lack of phones for the discharged patients (had no phone: 82.3%, n=6592; invalid number: 6.9%, n=553) with only 10.7% (n=856) being loss to follow-up for other reasons. However, with a mortality rate of 0.07% (n=6 deaths in 8906 discharges) in discharged patients with complete follow-up, it is highly unlikely that the 8110 discharged patients lost to follow-up represent a significant number of fatal cases excluded from our analysis. The 6.3% loss to follow-up rate for admitted and direct to theatre patients was otherwise considered adequate given the challenges of emergency unit data collection in SSA.

CONCLUSIONS

This analysis shows that task sharing of emergency care specialty-trained non-physician clinicians to address emergency care staffing shortages is both efficient and safe for the vast majority of patient encounters. As Uganda strives to reach the goal of consistent emergency medicine physician coverage of emergency units, operationalising a hybrid model with emergency medicine physician supervision of otherwise independent non-physician clinician care for the sickest emergency care patients has the potential to save lives. Based on the robust evidence base reported here, our recommendations are as follows:

1. Scale up emergency medicine physician development and training: the highest risk approximately 15% of patients had nearly a 50% reduction in mortality with

- physician involvement, and direct supervision significantly reduced overall mortality.
- Increase capacity for emergency care non-physician clinician training: emergency care non-physician clinicians provided independent care comparable to care given with emergency medicine physician supervision for approximately 85% of patients over the study period.
 - Create triage protocols for early identification of the highest risk patients: in our analysis, patients with three or more abnormal vital signs were most likely to derive benefit from emergency medicine physician clinical care or supervision of non-physician clinician care.
 - Create clear protocols and systems to provide emergency care non-physician clinicians with direct supervision in person or via phone/telehealth consultation by emergency medicine physician for patients at high-risk of mortality.

Author affiliations

¹Emergency Medicine, Stanford University, Palo Alto, California, USA

²Emergency Medicine, University of Colorado Anschutz Medical Campus, Denver, Colorado, USA

³Emergency Medicine, University of Cincinnati College of Medicine, Cincinnati, Ohio, USA

⁴Emergency Medicine, Mbarara University of Science and Technology, Mbarara, Mbarara, Uganda

⁵Emergency Medicine, Mbarara Regional Referral Hospital, Mbarara, Uganda

⁶Emergency Medicine, Mayo Clinic College of Medicine and Science, Rochester, Minnesota, USA

⁷Emergency Medicine, Global Emergency Care, Shrewsbury, Massachusetts, USA

⁸Public Health, Liverpool John Moores University, Liverpool, UK

⁹Emergency Medicine, Karoli Lwanga Hospital, Rukungiri, Rukungiri, Uganda

¹⁰Emergency Medicine, University of Vermont College of Medicine, Burlington, Vermont, USA

Twitter Brian Rice @tropicalEMdoc

Collaborators Global Emergency Care Collaborative Investigators: Mark Bisanzo, Heather Hammerstedt, Stacey Chamberlain and Bradley Dreifuss.

Contributors BR, AEP, CL and MB contributed to conception or design of the work; BR, AP, CL, PMK, RL, SJK, CN, SN, LFA and MB contributed to the acquisition, analysis, or interpretation of data for the work and drafting the work or revising it critically for important intellectual content; BR designed and executed data analysis; BR, AEP, CL, PMK, RL, SJK, CN, SN, LFA and MB provided final approval prior to publication; BR, AEP, CL, PMK, RL, SJK, CN, SN, LFA and MB agree to be accountable for accuracy and integrity of all aspects of the work. BR is the guarantor of this work.

Funding The authors have not declared a specific grant for this research from any funding agency in the public, commercial or not-for-profit sectors.

Competing interests None declared.

Patient and public involvement Patients and/or the public were involved in the design, or conduct, or reporting, or dissemination plans of this research. Refer to the Methods section for further details.

Patient consent for publication Not applicable.

Ethics approval Ethics approval for the quality assurance database and waiver of consent was obtained through the Institutional Review Board at Mbarara University of Science and Technology (No. 11/08–12).

Provenance and peer review Not commissioned; externally peer reviewed.

Data availability statement No data are available. Data sharing is not allowed under the study IRB Mbarara University of Science and Technology (MUST) Research Ethics Committee Number 11/08–12.

Supplemental material This content has been supplied by the author(s). It has not been vetted by BMJ Publishing Group Limited (BMJ) and may not have been peer-reviewed. Any opinions or recommendations discussed are solely those of the author(s) and are not endorsed by BMJ. BMJ disclaims all liability and responsibility arising from any reliance placed on the content. Where the content includes any translated material, BMJ does not warrant the accuracy and reliability of the translations (including but not limited to local regulations, clinical guidelines, terminology, drug names and drug dosages), and is not responsible for any error and/or omissions arising from translation and adaptation or otherwise.

Open access This is an open access article distributed in accordance with the Creative Commons Attribution Non Commercial (CC BY-NC 4.0) license, which permits others to distribute, remix, adapt, build upon this work non-commercially, and license their derivative works on different terms, provided the original work is properly cited, appropriate credit is given, any changes made indicated, and the use is non-commercial. See: <http://creativecommons.org/licenses/by-nc/4.0/>.

ORCID iDs

Brian Rice <http://orcid.org/0000-0002-9093-1831>

Ashley Pickering <http://orcid.org/0000-0001-5606-2479>

Prisca Mary Kizito <http://orcid.org/0000-0001-5235-8141>

Rebecca Leff <http://orcid.org/0000-0001-9254-6884>

REFERENCES

- World Health Assembly 72. *Emergency care systems for universal health coverage: ensuring timely care for the acutely ill and injured*. Geneva: World Health Organization, 2019. <https://apps.who.int/iris/handle/10665/329363>
- World Health Assembly 60. *Health systems: emergency-care systems*. Geneva: World Health Organization, 2007. <https://apps.who.int/iris/handle/10665/22596>
- Asamani JA, Akogun OB, Nyoni J, et al. Towards a regional strategy for resolving the human resources for health challenges in Africa. *BMJ Glob Health* 2019;4:e001533.
- World Health Organization. Working together for health : the world health report 2006 : overview. *Travailler ensemble pour la santé : rapport sur la santé dans le monde 2006 : résumé*, 2006. Available: <https://apps.who.int/iris/handle/10665/69256>
- Calvello E, Reynolds T, Hirshon JM, et al. Emergency care in sub-Saharan Africa: results of a consensus conference. *Afr J Emerg Med* 2013;3:42–8.
- Ningwa A, Muni K, Oporia F, et al. The state of emergency medical services and acute health facility care in Uganda: findings from a national cross-sectional survey. *BMC Health Serv Res* 2020;20:1–10.
- Chang CY, Abujaber S, Reynolds TA, et al. Burden of emergency conditions and emergency care usage: new estimates from 40 countries. *Emerg Med J* 2016;33:794–800.
- Obermeyer Z, Abujaber S, Makar M, et al. Emergency care in 59 low- and middle-income countries: a systematic review. *Bull World Health Organ* 2015;93:577–86.
- Razzak J, Usmani MF, Bhutta ZA. Global, regional and national burden of emergency medical diseases using specific emergency disease indicators: analysis of the 2015 global burden of disease study. *BMJ Glob Health* 2019;4:e000733.
- Uganda] data. Available: <https://data.worldbank.org/country/UG> [Accessed 8 Aug 2021].
- Medical doctors (per 10 000 population). Available: <https://www.who.int/data/gho/data/indicators/indicator-details/GHO/medical-doctors-> [Accessed 8 Aug 2021].
- Third national development plan (NDP III) 2020/21 – 2024/25. Ugandan national planning authority. Available: http://www.npa.go.ug/wp-content/uploads/2020/08/NDP-III-Finale_Compressed.pdf [Accessed 10 Sep 2021].
- Kizito P. The total number of Ugandan MMeds enrolled in training 2021.
- Eyal N, Cancedda C, Kyamanywa P, et al. Non-Physician clinicians in sub-Saharan Africa and the evolving role of physicians. *Int J Health Policy Manag* 2015;5:149–53.
- Fulton BD, Scheffler RM, Sparkes SP, et al. Health workforce skill mix and task shifting in low income countries: a review of recent evidence. *Hum Resour Health* 2011;9:1.
- Lehmann U, Van Damme W, Barten F, et al. Task shifting: the answer to the human resources crisis in Africa? *Hum Resour Health* 2009;7:49.
- Mullan F, Frehywot S. Non-Physician clinicians in 47 sub-Saharan African countries. *Lancet* 2007;370:2158–63.

- 18 World Health Organization. PEPFAR, UNAIDS. Task shifting : rational redistribution of tasks among health workforce teams : global recommendations and guidelines, 2007. Available: <https://apps.who.int/iris/handle/10665/43821>
- 19 Terry B, Bisanzo M, McNamara M, *et al*. Task shifting: meeting the human resources needs for acute and emergency care in Africa. *AFJEM* 2012;2:182–7.
- 20 World Health Organization, Regional Office for South-East Asia. *Mid-level health workers: a review of the evidence*. New Delhi: World Health Organization, Regional Office for South-East Asia, 2018. <https://apps.who.int/iris/handle/10665/259878>
- 21 Bergström S. Training Non-physician mid-level providers of care (associate clinicians) to perform caesarean sections in low-income countries. *Best Pract Res Clin Obstet Gynaecol* 2015;29:1092–101.
- 22 Gajewski J, Cheelo M, Bijlmakers L, *et al*. The contribution of Non-physician clinicians to the provision of surgery in rural Zambia—a randomised controlled trial. *Hum Resour Health* 2019;17:60.
- 23 Wilhelm TJ, Thawe IK, Mwatibu B, *et al*. Efficacy of major general surgery performed by Non-physician clinicians at a central hospital in Malawi. *Trop Doct* 2011;41:71–5.
- 24 Wilhelm TJ, Dzimbiri K, Sembereka V, *et al*. Task-shifting of orthopaedic surgery to Non-physician clinicians in Malawi: effective and safe? *Trop Doct* 2017;47:294–9.
- 25 Gessesew A, Barnabas GA, Prata N, *et al*. Task shifting and sharing in Tigray, Ethiopia, to achieve comprehensive emergency obstetric care. *Int J Gynaecol Obstet* 2011;113:28–31.
- 26 Nyamtema AS, Pemba SK, Mbaruku G, *et al*. Tanzanian lessons in using Non-physician clinicians to scale up comprehensive emergency obstetric care in remote and rural areas. *Hum Resour Health* 2011;9:28.
- 27 Beard JH, Oresanya LB, Akoko L, *et al*. Surgical task-shifting in a low-resource setting: outcomes after major surgery performed by nonphysician clinicians in Tanzania. *World J Surg* 2014;38:1398–404.
- 28 Chamberlain S, Stolz U, Dreifuss B, *et al*. Mortality related to acute illness and injury in rural Uganda: task shifting to improve outcomes. *PLoS One* 2015;10:e0122559.
- 29 Hammerstedt H, Maling S, Kasyaba R, *et al*. Addressing World health assembly resolution 60.22: a pilot project to create access to acute care services in Uganda. *Ann Emerg Med* 2014;64:461–8.
- 30 Guidelines regarding the role of physician assistants and nurse practitioners in the emergency department. Available: <https://www.acep.org/patient-care/policy-statements/guidelines-regarding-the-role-of-physician-assistants-and-nurse-practitioners-in-the-emergency-department/> [Accessed 8 Aug 2021].
- 31 Hooker RS, Klocko DJ, Larkin GL. Physician assistants in emergency medicine: the impact of their role. *Acad Emerg Med* 2011;18:72–7.
- 32 Doan Q, Sabhaney V, Kisson N, *et al*. A systematic review: the role and impact of the physician assistant in the emergency department. *Emerg Med Australas* 2011;23:7–15.
- 33 Yordanov Y, Chouihed T, Riou B, *et al*. Task shifting and emergency nurse practitioners - are nurses the future of emergency medicine?: the French experience. *Eur J Emerg Med* 2020;27:9–10.
- 34 Couper I, Ray S, Blaauw D, *et al*. Curriculum and training needs of mid-level health workers in Africa: a situational review from Kenya, Nigeria, South Africa and Uganda. *BMC Health Serv Res* 2018;18:553.
- 35 Freistadt F, Branigan E, Pupp C, *et al*. A framework for revising preservice curriculum for nonphysician clinicians: the Mozambique experience. *Educ Health* 2014;27:283.
- 36 Rick TJ, Moshi DD. The Tanzanian assistant medical officer. *JAAPA* 2018;31:43–7.
- 37 Yasmin F, Schultz A, Phiri A. I need to be the first one with a different approach and to make a difference to the people”-transforming pediatric training for non-physician clinicians in malawi: a mixed-method study. *Research Square* 2020.
- 38 Zhao Y, Hagel C, Tweheyo R, *et al*. Task-Sharing to support paediatric and child health service delivery in low- and middle-income countries: current practice and a scoping review of emerging opportunities. *Hum Resour Health* 2021;19:95.
- 39 Byrne-Davis LMT, Jackson MJ, McCarthy R, *et al*. A pre-post study of behavioural determinants and practice change in Ugandan clinical officers. *Afr J Health Prof Educ* 2018;10:220–7.
- 40 Fant CD, Schwartz KR, Patel H, *et al*. Developing and implementing a pediatric emergency care curriculum for providers at district level hospitals in sub-Saharan Africa: a case study in Kenya. *Front Public Health* 2017;5:322.
- 41 James DR, Barling J, Ross O. G293 (P) Towards emergency triage assessment and treatment (ETAT)++: introducing basic paediatric trauma management skills in rural Ghana. *Arc Dis Childh* 2019;104:A120.
- 42 Niyogi A, Villona B, Rubenstein BL, *et al*. In-Service training of physician assistants in acute care in Ghana: challenges, successes, and lessons learned. *AJEM* 2015;5:114–9.
- 43 Bitter CC, Rice B, Periyanyagam U, *et al*. What resources are used in emergency departments in rural sub-Saharan Africa? A retrospective analysis of patient care in a district-level hospital in Uganda. *BMJ Open* 2018;8:e019024.
- 44 Colella M, Bisanzo M, Farquhar C, *et al*. Implementation and evaluation of an innovative leadership and teacher training program for Non-physician emergency medicine practitioners in Uganda. *Afr J Emerg Med* 2019;9:25–9.
- 45 Dresser C, Periyanyagam U, Dreifuss B, *et al*. Management and outcomes of acute surgical patients at a district hospital in Uganda with Non-physician emergency clinicians. *World J Surg* 2017;41:2193–9.
- 46 Rice B, Periyanyagam U, Chamberlain S, *et al*. Mortality in children under five receiving nonphysician clinician emergency care in Uganda. *Pediatrics* 2016;137:e20153201.
- 47 Rice B, Leanza J, Mowafi H, *et al*. Defining high-risk emergency chief complaints: data-driven triage for low- and middle-income countries. *Acad Emerg Med* 2020;27:1291–301.
- 48 Rybarczyk MM, Ludmer N, Broccoli MC, *et al*. Emergency medicine training programs in low- and middle-income countries: a systematic review. *Ann Glob Health* 2020;86:60.
- 49 Uganda - World Bank Open Data. The World Bank. Available: <https://data.worldbank.org/country/UG> [Accessed 4 Sep 2021].
- 50 Vittinghoff E, McCulloch CE. Relaxing the rule of ten events per variable in logistic and COX regression. *Am J Epidemiol* 2007;165:710–8.
- 51 Mackinnon A. The use and reporting of multiple imputation in medical research - a review. *J Intern Med* 2010;268:586–93.
- 52 Johnson DR, Young R. Toward best practices in analyzing datasets with missing data: comparisons and recommendations. *J Marriage Fam* 2011;73:926–45.
- 53 Seidman G, Atun R. Does task shifting yield cost savings and improve efficiency for health systems? A systematic review of evidence from low-income and middle-income countries. *Hum Resour Health* 2017;15:29.