


BMJ Open Association of serum high-sensitivity C reactive protein with risk of mortality in an Asian population: the Health Examinees cohort

Sang-Ah Lee ^{1,2}, Sung Ok Kwon,¹ Hyerim Park,¹ Xiao-Ou Shu,² Jong-Koo Lee,³ Daehee Kang⁴

To cite: Lee S-A, Kwon SO, Park H, *et al.* Association of serum high-sensitivity C reactive protein with risk of mortality in an Asian population: the Health Examinees cohort. *BMJ Open* 2022;**12**:e052630. doi:10.1136/bmjopen-2021-052630

► Prepublication history and additional supplemental material for this paper are available online. To view these files, please visit the journal online (<http://dx.doi.org/10.1136/bmjopen-2021-052630>).

Received 20 April 2021
Accepted 06 April 2022



© Author(s) (or their employer(s)) 2022. Re-use permitted under CC BY-NC. No commercial re-use. See rights and permissions. Published by BMJ.

¹Preventive Medicine, Kangwon National University School of Medicine, Chuncheon, Republic of Korea

²Division of Epidemiology, Vanderbilt University Medical Center, Nashville, Tennessee, USA

³JW LEE Center for Global Medicine, Seoul, Republic of Korea

⁴Preventive Medicine, Seoul National University College of Medicine, Seoul, Republic of Korea

Correspondence to

Dr Sang-Ah Lee;
sangahlee@kangwon.ac.kr

ABSTRACT

Objectives This study aimed to examine the association of high-sensitivity C reactive protein (*hsCRP*) with mortality risk and the attenuated effect of non-communicable disease history (NCD_{history}) on the association.

Design Prospective cohort study.

Setting Health Examinees cohort.

Participants A total of 41 070 men and 81 011 women aged ≥40 years were involved (follow-up: 6.8 years).

Outcome measures Data and cause of death occurring until 31 December 2015 were confirmed by death statistics from the National Statistical Office. We conducted advanced analysis after stratification by NCD_{history} and sensitivity analysis after excluding death before 1 or 2 years from recruitment. Cox proportional hazard and restricted cubic spline models were used to assess the association.

Results The association between serum *hsCRP* and risk of all-cause mortality was observed with strong linearity in both genders and was not influenced by NCD_{history}. The association of serum *hsCRP* with risk of cancer mortality was not observed in women with NCD_{history} but the association with risk of cardiovascular disease (CVD) mortality was predominantly observed in men with NCD_{history}.

Conclusions This study suggests a dose–response association of *hsCRP* with mortality risk, including cancer and CVD mortality, in Koreans with low serum *hsCRP*, although the association with cancer and CVD mortality risk could be influenced by gender and NCD_{history}.

INTRODUCTION

High-sensitivity C reactive protein (*hsCRP*) is an acute-phase response protein synthesised by the liver and is the most sensitive and dynamic marker of inflammation.¹ Since *hsCRP* has been reported as a candidate marker of generalised atherosclerosis and cardiovascular disease (CVD),² many studies^{3–7} have investigated the role of *hsCRP* level as a predictor of mortality risk. A recent meta-analysis⁸ reported the predictive role of serum *hsCRP* in all-cause and CVD mortality in the general population. Nevertheless, it is

STRENGTHS AND LIMITATIONS OF THIS STUDY

- ⇒ This is a large population-based prospective study.
- ⇒ We examined the effect of very high-sensitivity C reactive protein (*hsCRP*) concentration on mortality risk.
- ⇒ The *hsCRP* level in the present study was measured within 18 hours at a single institution to minimise error/bias.
- ⇒ Due to random fluctuations in *hsCRP*, using a single measurement of *hsCRP* at baseline could reflect inaccurate status of blood *hsCRP* level in study participants and increase the instability of *hsCRP*.
- ⇒ This study lacked information on medication use at recruitment and during the follow-up period, as well as information on hormone replacement therapy among women.

controversial whether the predictive role of *hsCRP* could be applied to the risk of mortality in Asians, whose *hsCRP* levels are lower than those of individuals in Western countries.

Serum *hsCRP* represents a low-grade inflammation state that is generally involved in the process of ageing.⁹ Several large cohorts, including the Study of Women's Health Across the Nation,¹⁰ the Women's Health Study¹¹ and the Dallas Heart Study,¹² reported significant differences in *hsCRP* level by race and gender. In two studies of multiethnic populations residing in the USA,^{10 13} the median *hsCRP* level in East Asians was less than half the concentration in Caucasians. Even among East Asian populations, the geometric mean of *hsCRP* levels varied depending on ethnic background.¹⁴ In addition, a meta-analysis¹¹ reported the *hsCRP* levels among women of various ethnic groups living in the USA (from the Women's Health Study) and the association between *hsCRP* and risk of mortality; the association was observed only in men, supported by the results from two cohort studies^{15 16} reported in Korea. On the other

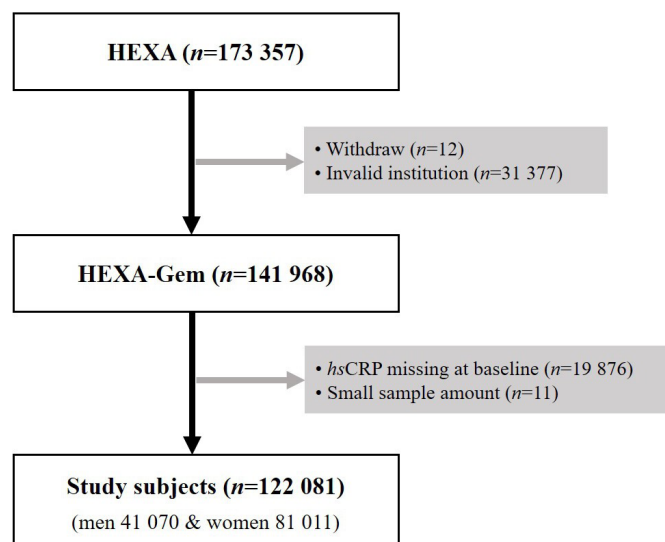


Figure 1 Flow diagram of the analytical sample in the current study using the HEXA cohort. HEXA, Health Examinees; hsCRP, high-sensitivity C reactive protein.

hand, increased hsCRP may be influenced by comorbidity itself because inflammation has emerged as an important factor in the progression of non-communicable diseases (NCDs), including CVD,¹⁷ cancer,¹⁸ chronic obstructive pulmonary disease (COPD),¹⁹ type 2 diabetes²⁰ and fractures,²¹ which contribute to increased morbidity and mortality.

This study aimed to examine the association of serum hsCRP with risk of mortality in Koreans with low serum hsCRP and to evaluate the attenuated effect of non-communicable disease history (NCD_{history}) on the association.

METHODS

Study population

Details on the main objectives, rationale, study design and baseline characteristics of the Health Examinees (HEXA) study have been published elsewhere.²² Considering the homogeneity and comparability of participants, we created a qualified data set called HEXA-G (Health Examinees-Gem) from previously published HEXA studies.²³ In the new HEXA-G data, a total of 141 968 participants remained after exclusion of withdrawers (n=12). In addition, 19 887 were excluded due to missing information (n=19 876) or small sample size (n=11) on any hsCRP components at the baseline survey. Ultimately, 122 081 subjects, including 41 070 men and 81 011 women, remained in the final analysis (figure 1). All study participants provided informed consent prior to entering the study.

Laboratory measurements

After at least 10 hours of overnight fasting, blood samples were obtained in the morning. Biospecimens included fasting blood samples that were collected in a serum separator tube and two EDTA tubes. All samples were

then transported within 18 hours to the National Biobank of Korea and stored for future research purposes. hsCRP was measured using a turbidimetric immunoassay (ADVIA 1650 and ADVIA 1800; Siemens Healthineers).

Follow-up and ascertainment of mortality

All-cause mortality was confirmed by death statistics from the National Statistical Office, which provided the data and causes of all deaths occurring through 31 December 2015. We added the mortality data from Statistics Korea to our data set using each participant's unique identifier. Information on death and causes of death was obtained from a record link with the national death certificate files in Korea. The main outcome of interest was all-cause mortality (defined as death from any cause), including cancers and CVD mortality. The cause of death was classified according to the International Classification of Diseases, 10th Revision. Deaths were coded as C00-C97 for cancer and I00-I99 for CVD.

Baseline variables

Trained interviewers collected information on demographic, socioeconomic and lifestyle factors. Anthropometric measurements were obtained using standardised methods. Body mass index (BMI) was calculated and all participants were defined into four classes based on the WHO classification of BMI for Asian adults:²⁴ underweight (BMI <18.5 kg/m²), normal (18.5 ≤ BMI <23.0 kg/m²), overweight (23.0 ≤ BMI <25.0 kg/m²), obesity (25.0 ≤ BMI <29.9 kg/m²) and severe obesity (BMI ≥30.0 kg/m²). The current study defined metabolic syndrome using the National Cholesterol Education Program Adult Treatment Panel III,²⁵ modified for Asian guidelines on waist circumference (≥90 cm and ≥80 cm for men and women, respectively). Non-smokers were defined as those who had smoked less than 400 cigarettes over the course of their lifetime. Participants who had smoked were categorised into two groups: non-current (never/former) and current smoker. Non-current drinkers were defined as those who had never consumed an alcoholic drink over the course of their lifetime or those who had not consumed alcohol at recruitment, while current drinkers were defined as those who persisted in consuming alcohol. Regular exercise was classified into two groups (yes/no) as follows: 'Do you currently engage in regular exercise strenuous enough to cause you to break into a sweat at least once per week?' Furthermore, considering the attenuated effect of NCD_{history} on the association between serum hsCRP and risk of mortality, we performed advanced analysis after stratification by NCD_{history}. We considered six main NCDs (hypertension, diabetes, hyperlipidaemia, cancer, cardiovascular and cerebrovascular diseases, and respiratory disease) to classify healthy subjects versus subjects with NCD_{history}.

Statistical analysis

For the categorical analysis, we created nine categories based on the distribution of hsCRP levels in our

population: ≤ 1.00 (reference group), 1.01–1.50, 1.51–2.00, 2.01–2.50, 2.51–3.00, 3.01–4.00, 4.01–6.00, 6.01–10.0 and >10.0 mg/L. For the advanced analysis after stratification by NCD_{history}, the hsCRP levels were categorised into ≤ 1.00 , 1.01–2.00, 2.01–3.00, 3.01–10.0 and >10.0 mg/L due to the reduced sample size in each subgroup. The concentrations of hsCRP were log-transformed for analyses due to the skewed distribution.

We calculated a follow-up time for each subject starting from the date of interview until the date of death or 31 December 2015, whichever came first. Using age as the time scale, subjects entered the risk set at the age at which they completed the baseline questionnaire and exited at their event/censoring age. The associations of hsCRP and all-cause mortality, as well as cancer and CVD mortality, were analysed by Cox proportional hazard models (adjusted HR (aHR)) and included adjustment for age, gender, demographic factors (education, marital status, job, BMI and NCD_{history}) and lifestyle factors (smoking, alcohol consumption and exercise). We used Wald test to test for heterogeneity of risk between serum hsCRP level groups. The proportional hazards assumption was assessed on the basis of Schoenfeld residuals and was not violated for the variables of interest in the adjusted model for either cancer mortality or CVD mortality ($p > 0.05$ for all categories). In addition, we conducted a sensitivity analysis to avoid latent period bias after excluding death before 1 year (aHR_{1year}) or 2 years (aHR_{2years}) since recruitment. Based on the Cox proportional hazard models, we made Kaplan-Meier curves and log-rank analysis after adjustment for age, gender, demographic factors (education, marital status, job, BMI and NCD_{history}) and lifestyle factors (smoking, alcohol consumption and exercise). We employed restricted cubic splines (RCS) to evaluate the possibility of complex (ie, non-linear) hazard functions²⁶ using continuous values of hsCRP (aHR_{continuous}). We selected five hsCRP concentration values as knots based on hsCRP concentration percentiles, tested the linear and non-linear associations between knots using a cubic function, and presented the integrated graph smoothly. All statistical analyses were performed using SAS V.9.3 and RCS analysis was carried out using the SAS LGTPH-CURV9 macro. Two-sided p values < 0.05 were defined as indicating statistical significance.

Patient and public involvement

No patients and public were involved in the design, conduct, reporting and dissemination plans of the present study.

RESULTS

The association of demographic and lifestyle factors with risk of all-cause mortality is presented in table 1. During the follow-up period (average 6.8 years), 1365 men and 864 women died. The median levels of hsCRP were 0.77 mg/L and 0.59 mg/L for men and women, respectively. The risk of all-cause mortality was inversely

associated with female gender (aHR=0.38), high education (aHR=0.65), overweight (aHR=0.81) or obesity (aHR=0.83), current alcohol consumption (aHR=0.81) and regular exercise (aHR=0.83), but was positively associated with a single marital status (aHR=1.23), NCD_{history} (aHR=1.57), underweight (aHR=2.05) and current smoking (aHR=1.97).

The risk of all-cause mortality increased in a dose-dependent pattern with serum hsCRP level ($p_{\text{trend}} < 0.001$; online supplemental material 1), regardless of gender ($p_{\text{trend}} < 0.001$ in both genders), even in the sensitivity analysis ($p_{\text{trend}} < 0.001$ for aHR_{1year} in both genders). The increased risk of female mortality with increased hsCRP level was observed in both premenopausal ($p_{\text{trend}} = 0.020$) and postmenopausal ($p_{\text{trend}} < 0.001$) women, although the statistical significance in premenopausal women disappeared after sensitivity analysis ($p_{\text{trend}} = 0.150$ for aHR_{2years}; online supplemental material 1). The integrated graph, based on the RCS analyses, indicated a strong and linear association of serum hsCRP level with all-cause mortality in both genders (aHR_{continuous} = 1.019 and 1.013 in men and women, respectively; figure 2A).

The dose-response association between hsCRP level and risk of all-cause mortality was not influenced by NCD_{history} (online supplemental material 2). After stratification by gender, however, the attenuated effect by NCD_{history} on the association was observed only in women; the linearity of the relationship was observed in healthy women ($p_{\text{trend}} = 0.001$ for aHR_{2years}) but disappeared in women with NCD_{history}, particularly after sensitivity analysis with exclusion of a 2-year follow-up time ($p_{\text{trend}} = 0.084$ for aHR_{2years}). Based on the RCS analyses, the pattern of increase in the association was different depending on NCD_{history} (figure 2B,C). In healthy subjects, the risk of all-cause mortality increased with a gradual slope (strength) until 3.0 mg/L hsCRP, with a very steep slope until 4.5 mg/L and finally with a reduced and flattened slope after 4.5 mg/L (figure 2B). On the other hand, the slope of the association fluctuated as the hsCRP level increased in subjects with NCD_{history}; the slope increased up to 3.0 mg/L hsCRP but decreased until 4.5 mg/L and rapidly increased after 4.5 mg/L (figure 2C).

The association of serum hsCRP with risk of cancer mortality was not influenced by NCD_{history} ($p_{\text{trend}} < 0.001$ regardless of NCD_{history}) (table 2 and figure 3A–E). After stratification by gender, the association was not observed in women with NCD_{history} ($p_{\text{trend}} = 0.856$); however, the association was not influenced by NCD_{history} in men ($p_{\text{trend}} < 0.001$ and $p_{\text{trend}} = 0.002$ for aHR in both healthy and NCD_{history}) (table 2). Although the risk of CVD mortality was linearly associated with increasing hsCRP levels, the association was dominant in men ($p_{\text{trend}} = 0.002$) and in subjects with NCD_{history} ($p_{\text{trend}} = 0.001$; table 3) after stratification by gender and NCD_{history}, respectively (figure 4A–E). After stratification by gender and NCD_{history}, the association only appeared in individuals of both genders with NCD_{history} ($p_{\text{trend}} = 0.015$ and $p_{\text{trend}} = 0.035$ in men and women with NCD_{history}, respectively); no association between hsCRP

Table 1 Baseline characteristics of participants by all-cause mortality

	All (N=122 081)	Death (n=2229)	All-cause mortality	
			Age and gender adjusted	Adjusted HR*
Age	53.1±8.3	59.7±8.8		
Female	66.4	38.8	0.40 (0.36–0.43)	0.38 (0.33–0.44)
Education (≥10 years, %)	68.2	55.4	0.67 (0.60–0.75)	0.65 (0.56–0.75)
Blue-collar worker† (%)	32.3	33.8	1.46 (1.26–1.68)	1.16 (0.99–1.35)
Marital status (single, %)	11.0	13.3	1.35 (1.19–1.54)	1.23 (1.07–1.40)
NCD _{history} (yes, %)	32.4	53.6	1.51 (1.39–1.65)	1.57 (1.42–1.72)
Hypertension	18.9	31.5	1.18 (1.08–1.30)	1.22 (1.11–1.35)
Diabetes	6.5	17.1	1.81 (1.62–2.03)	1.77 (1.57–2.00)
Hyperlipidaemia	9.2	7.6	0.73 (0.62–0.86)	0.78 (0.66–0.92)
Cancer	3.2	8.8	2.69 (2.31–3.12)	2.66 (2.27–3.11)
Cerebral and cardiovascular diseases	3.7	10.2	1.50 (1.30–1.73)	1.43 (1.23–1.66)
Respiratory disease	2.4	4.3	1.37 (1.12–1.68)	1.32 (1.06–1.64)
Body mass index (%)				
<18.5	1.8	3.7	2.14 (1.69–2.69)	2.05 (1.61–2.62)
18.5–22.9	38.1	34.9	1.00 (ref)	1.00 (ref)
23.0–24.9	27.8	26.0	0.82 (0.73–0.91)	0.81 (0.72–0.91)
25.0–29.9	29.5	32.5	0.90 (0.81–1.00)	0.83 (0.74–0.93)
≥30.0	2.8	2.9	1.08 (0.83–1.39)	0.81 (0.61–1.08)
P trend			0.0118	<0.0001
Metabolic syndrome (yes, %)	22.0	28.4	1.13 (1.03–1.24)	1.07 (0.96–1.19)
Current smoker (%)	11.7	22.7	2.04 (1.79–2.33)	1.97 (1.71–2.27)
Current drinker (%)	44.0	43.8	0.86 (0.77–0.95)	0.81 (0.73–0.91)
Regular exercise (yes, %)	53.4	49.1	0.76 (0.70–0.83)	0.83 (0.76–0.91)

*Adjusted for age, gender, education, job, marital status, BMI and NCD_{history}.
†Compared with white-collar worker.
BMI, body mass index; NCD_{history}, non-communicable disease history; ref, reference.

level and CVD mortality risk was found in either healthy men or women.

DISCUSSION

This study suggests that the risk of all-cause mortality was associated with elevated *hsCRP* levels in a dose–response manner in both genders among Asians who have reported low *hsCRP* levels compared with other races and was not

influenced by NCD_{history}. The association was influenced by gender and NCD_{history}, although a dose–response association of *hsCRP* with risk of cancer and CVD mortality was also observed in this population. The level of *hsCRP* was not associated with risk of cancer mortality among women with NCD_{history}. The risk effect of high *hsCRP* level on CVD mortality was predominantly observed in men with NCD_{history}.

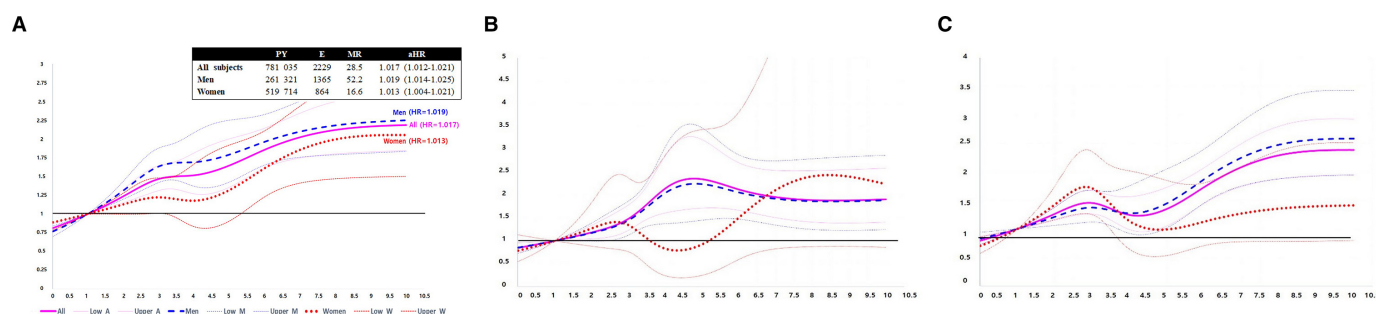


Figure 2 Dose–response association between serum *hsCRP* level and risk of all-cause mortality in all (A), healthy subjects at recruitment (B) and subjects with non-communicable disease history at recruitment (C). aHR, adjusted hazard ratio (adjusted for age, gender, education, job, marital status, BMI, NCD_{history}, smoking, alcohol consumption and exercise) BMI, body mass index; E, number of death; *hsCRP*, high-sensitivity C reactive protein; MR, mortality rate; PY, person-year.

Table 2 Association between serum hsCRP level and cancer mortality by gender and NCD_{history} at recruitment

Cancer mortality					Healthy subjects at recruitment					Subjects with NCD _{history} at recruitment				
E	MR	aHR	HR _{1year}	HR _{2years}	E	MR	aHR	HR _{1year}	HR _{2years}	E	MR	aHR	HR _{1year}	HR _{2years}
Total														
≤1.00	590	10.9	Ref	Ref	270	7.9	Ref	Ref	Ref	320	16.3	Ref	Ref	Ref
1.01–2.00	232	17.1	1.25	1.23	85	13.4	1.43	1.40	1.31	147	20.3	1.19	1.13	1.09
2.01–3.00	86	20.4	1.32	1.24	29	16.0	1.38	1.34	1.35	57	23.7	1.35	1.18	1.10
3.01–10.0	149	29.4	1.83	1.76	54	24.8	2.22	2.07	2.01	95	33.0	1.75	1.59	1.55
>10.0	66	48.9	2.69	2.28	20	30.6	1.85	1.59	1.57	46	65.9	3.25	2.64	2.16
P trend		<0.001	<0.001	<0.001			<0.001	<0.001	<0.001			<0.001	<0.001	<0.001
Men														
≤1.00	302	18.5	Ref	Ref	169	23.6	Ref	Ref	Ref	133	14.5	Ref	Ref	Ref
1.01–2.00	144	26.6	1.36	1.36	95	32.6	1.40	1.38	1.34	49	19.7	1.31	1.34	1.31
2.01–3.00	59	34.7	1.45	1.31	40	40.4	1.54	1.37	1.16	19	26.7	1.29	1.22	1.26
3.01–10.0	111	52.7	2.17	2.10	77	64.5	2.26	2.24	2.12	34	37.3	1.98	1.80	1.70
>10.0	50	82.9	3.13	2.66	38	114.1	4.07	3.42	2.79	13	46.1	1.58	1.40	1.56
P trend		<0.001	<0.001	<0.001			<0.001	<0.001	<0.001			0.002	0.009	0.015
Women														
≤1.00	288	7.7	Ref	Ref	137	5.5	Ref	Ref	Ref	151	12.1	Ref	Ref	Ref
1.01–2.00	88	10.8	1.13	1.08	36	9.4	1.60	1.48	1.31	52	12.1	0.86	0.86	0.81
2.01–3.00	27	10.7	1.16	1.17	10	9.1	1.48	1.50	1.47	17	12.0	0.96	0.98	1.03
3.01–10.0	38	12.9	1.31	1.24	20	15.8	2.58	2.48	2.57	18	10.7	0.75	0.71	0.74
>10.0	15	20.4	1.89	1.61	7	18.9	2.16	1.75	1.42	8	21.9	1.66	1.47	1.17
P trend		0.019	0.074	0.161			<0.001	0.001	0.002			0.856	0.635	0.538

aHR: adjusted for age, gender, education, job, marital status, BMI, NCD_{history}, smoking, alcohol consumption and exercise.
HR_{1year}: aHR after excluding subjects who died within 1-year follow-up time.
HR_{2years}: aHR after excluding subjects who died within 2-year follow-up time.
aHR, adjusted hazard ratio; BMI, body mass index; E, number of death; hsCRP, high-sensitivity C reactive protein; MR, mortality rate (10 000 person-years); NCD_{history}, non-communicable disease history; Ref, reference.

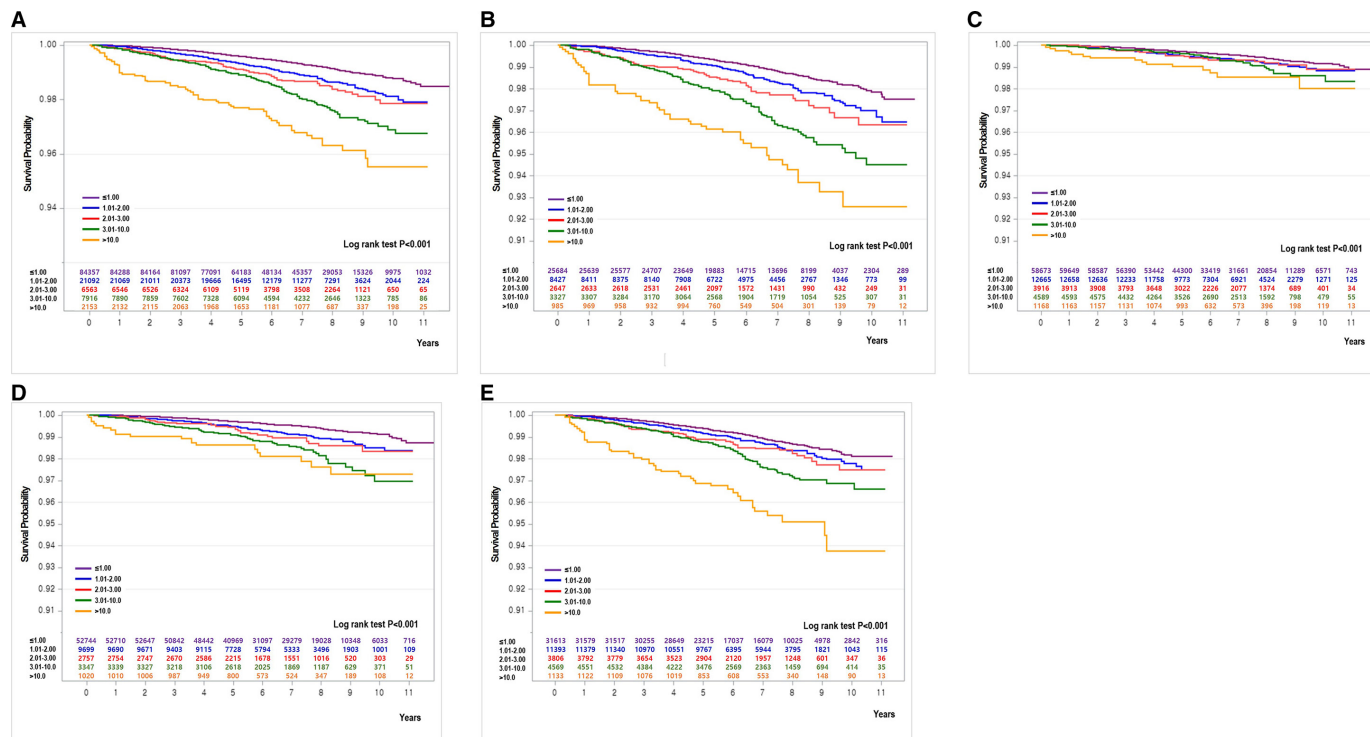


Figure 3 Kaplan-Meier crude survival curves for cancer mortality according to serum *hsCRP* level in all (A), men (B), women (C), healthy subjects at recruitment (D) and subjects with non-communicable disease history at recruitment (E). *hsCRP*, high-sensitivity C reactive protein.

Several large cohorts^{10–12 14} have suggested that serum *hsCRP* levels may differ according to ethnic background, with the highest concentrations seen in African Americans, followed by Hispanic, white, Chinese and Japanese individuals. Although the reason for this ethnic difference is not clearly resolved, genetic diversity,²⁷ the relatively low BMI in Asian populations, and ethnic differences in diet and lifestyle²⁸ have been suggested. Although the extent to which these findings adopt to Asian populations has been unclear, several recent studies^{11 16} conducted in Asia reported a positive association of *hsCRP* with mortality risk. In this population, the *hsCRP* level was associated with risk of all-cause mortality in a dose-dependent manner, even though the level of *hsCRP* was lower than in the Western population. A meta-analysis²⁹ and large cohort studies^{3–6} supported the robustness of the association regardless of adjusted confounders, the cut-off point of CRP level and exclusion of deaths within the first 2 years of follow-up.

The reason for the discrepancy in *hsCRP* levels with respect to gender is not clearly resolved, although several studies suggested different lifestyle and metabolic risk factors between men and women³⁰ and genetic diversity.²⁷ A high level of serum *hsCRP* in our population was positively related to the increased risk of all-cause mortality in both genders, supported by several previous studies.^{8 16 31} Nevertheless, several studies reported no association of *hsCRP* level with all-cause mortality was observed in women.^{7 16} In particular, the association was shown in postmenopausal women only, which might

suggest the protective effect of endogenous female hormones on the low level of *hsCRP*,³² the average *hsCRP* level was 0.48 mg/L and 0.68 mg/L for premenopausal and postmenopausal women in this study. The protective effect could be supported by the proposition that oestrogen or progesterone might to some extent repress the detrimental effects of chronic inflammation on tissue damage.³³

Inflammation has emerged as an important factor in the processes of NCD, including CVD,¹⁷ cancer,¹⁸ type 2 diabetes,²⁰ COPD^{19 34} and fracture.²¹ In addition, medications that had taken to treat any specific NCD, such as renin-angiotensin system inhibitors³⁵ and statins and thiazolidinedione,³⁶ could influence the level of *hsCRP*. The association between *hsCRP* and mortality risk was not attenuated by NCD^{history} in either gender in this study, but the statistical significance of the association disappeared in women after sensitivity analysis (aHR_{2years}). A dose-response relationship between *hsCRP* level and all-cause mortality risk was pronounced in both genders. On the other hand, the positive association of *hsCRP* with risk of all-cause mortality was significantly observed only in men with NCD^{history} but not in women with NCD^{history}. The attenuated effect of NCD^{history} on the association between *hsCRP* and risk of cancer mortality was not observed in men, consistent with results from several studies which reported an association among healthy men³ or patients with cancer^{37 38} only. Most studies^{3 4 6 7 15 16 31 39} supported that CVD mortality increased with elevated *hsCRP* levels, predominantly in men.^{4 7 15 16} Although *hsCRP* levels are

Table 3 Association between serum hsCRP level and cardiovascular disease mortality by gender and NCD_{history} at recruitment

Cardiovascular disease mortality										Healthy subjects at recruitment					Subjects with NCD _{history} at recruitment				
E	MR	aHR	HR _{1year}	HR _{2years}	E	MR	aHR	HR _{1year}	HR _{2years}	E	MR	aHR	HR _{1year}	HR _{2years}					
Total																			
≤1.00	167	3.1	Ref	Ref	58	1.7	Ref	Ref	Ref	109	5.5	Ref	Ref	Ref					
1.01–2.00	79	5.8	1.35	1.37	18	2.8	1.19	1.15	0.94	64	8.4	1.42	1.46	1.36					
2.01–3.00	42	10.0	2.06	2.05	6	3.3	1.47	1.54	1.46	36	15.0	2.28	2.25	2.26					
3.01–10.0	39	7.7	1.45	1.38	8	3.7	1.44	1.50	1.70	31	10.8	1.48	1.37	1.40					
>10.0	13	9.6	1.81	1.76	3	4.6	2.02	2.10	1.58	10	14.3	1.85	1.74	1.68					
P trend			0.001	0.002			0.130	0.100	0.162			0.001	0.006	0.009					
Men																			
≤1.00	89	5.5	Ref	Ref	25	2.7	Ref	Ref	Ref	64	8.9	Ref	Ref	Ref					
1.01–2.00	45	8.3	1.33	1.32	12	4.8	1.30	1.22	1.22	33	11.3	1.31	1.33	1.33					
2.01–3.00	30	17.6	2.70	2.67	3	4.2	1.31	1.37	1.37	27	27.3	3.05	2.99	2.99					
3.01–10.0	24	11.4	1.43	1.36	6	6.6	1.70	1.79	1.79	18	15.1	1.42	1.21	1.21					
>10.0	8	13.0	1.90	2.02	3	10.6	3.42	3.61	3.61	5	15.0	1.59	1.62	1.62					
P trend			0.002	0.003			0.053	0.038	0.062			0.015	0.027	0.047					
Women																			
≤1.00	78	2.1	Ref	Ref	33	1.3	Ref	Ref	Ref	45	6.3	Ref	Ref	Ref					
1.01–2.00	34	4.2	1.41	1.46	6	1.6	1.09	1.13	0.62	28	9.6	1.60	1.66	1.58					
2.01–3.00	12	4.8	1.26	1.30	3	2.7	1.65	1.70	1.86	9	9.1	1.17	1.20	1.39					
3.01–10.0	15	5.1	1.51	1.45	2	1.6	1.06	1.07	1.14	13	10.9	1.75	1.64	1.65					
>10.0	5	6.8	1.72	1.35	0	–	–	–	–	5	15.0	2.51	1.91	2.07					
P trend			0.092	0.177			0.940	0.998	0.922			0.035	0.092	0.078					
aHR: adjusted for age, gender, education, job, marital status, BMI, NCD _{history} , smoking, alcohol consumption and exercise. HR _{1year} : aHR after excluding subjects who died within 1-year follow-up time. HR _{2years} : aHR after excluding subjects who died within 2-year follow-up time. aHR, adjusted hazard ratio; BMI, body mass index; E, number of death; hsCRP, high-sensitivity C reactive protein; MR, mortality rate (10 000 person-years); NCD _{history} , non-communicable disease history; Ref, reference.																			

aHR: adjusted for age, gender, education, job, marital status, BMI, NCD_{history}, smoking, alcohol consumption and exercise.

HR_{1year}: aHR after excluding subjects who died within 1-year follow-up time.

HR_{2years}: aHR after excluding subjects who died within 2-year follow-up time.

aHR, adjusted hazard ratio; BMI, body mass index; E, number of death; hsCRP, high-sensitivity C reactive protein; MR, mortality rate (10 000 person-years); NCD_{history}, non-communicable disease history; Ref, reference.

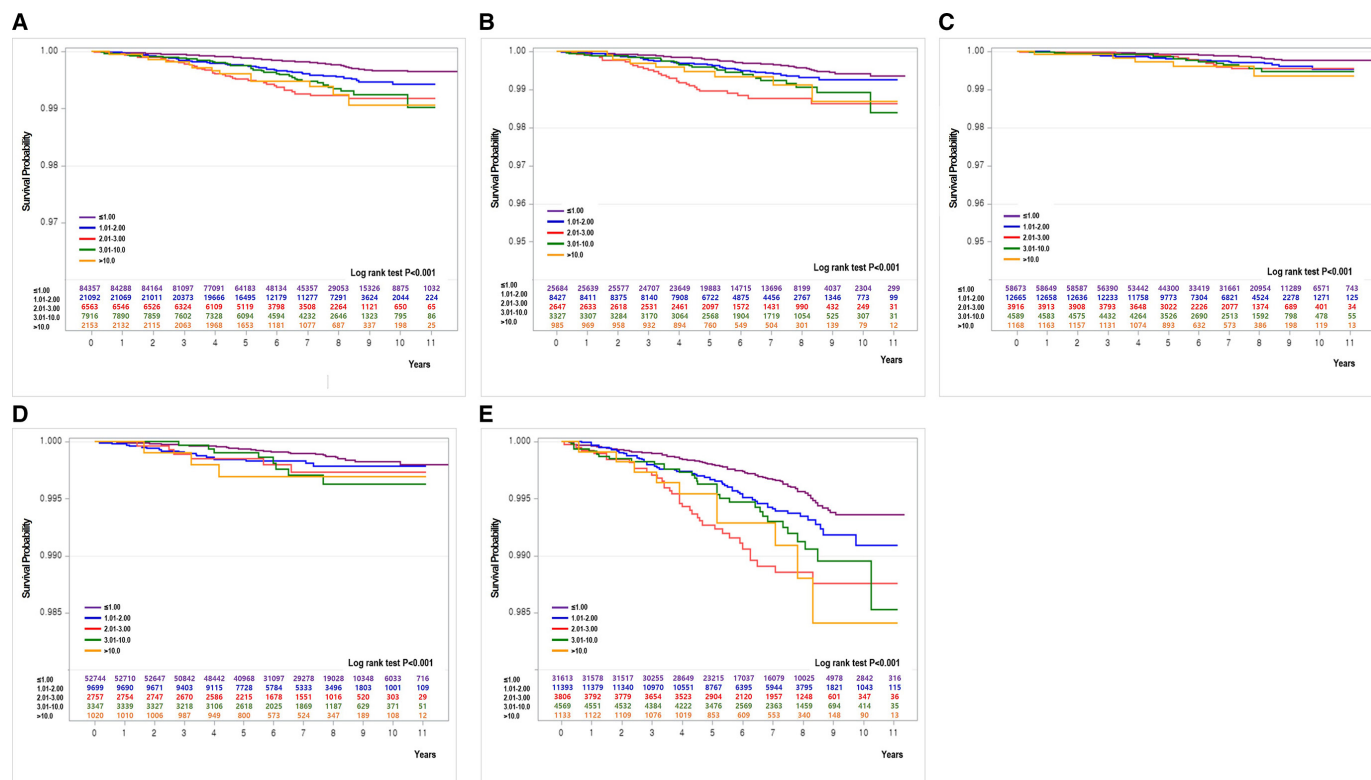


Figure 4 Kaplan-Meier crude survival curves for cardiovascular disease mortality according to serum *hsCRP* level in all (A), men (B), women (C), healthy subjects at recruitment (D) and subjects with non-communicable disease history at recruitment (E). *hsCRP*, high-sensitivity C reactive protein.

lower in our population than in other races, the level of *hsCRP* was positively associated with CVD mortality in men but not in women, similar to previous studies.^{7 15 16 31 39}

After stratification by gender and *NCD_{history}*, the association between *hsCRP* and risk of CVD mortality was dominant in subjects with *NCD_{history}* in this study. Although many interventional studies have been conducted recently on anti-inflammatory drugs for prevention of CVD, the results are controversial. According to the results of our study, elevated inflammatory markers in people with chronic disease were associated with an increased risk of CVD mortality. This suggests that CVD mortality in people with chronic diseases might be reduced by use of anti-inflammatory medication.

This study has several strengths. As a large population-based prospective study, it was possible to (1) adjust for confounders; (2) perform a sensitivity analysis after excluding death before 1 or 2 years from recruitment; (3) assess an advanced analysis after stratification by gender and *NCD_{history}*; (4) examine the association using various cut-off points of *hsCRP* considering low serum *hsCRP* levels in Asian populations; and (5) evaluate the complex (ie, non-linear) hazard functions using RCS on the association between continuous *hsCRP* levels and risk of mortality. In particular, most previous studies excluded subjects with more than 10 mg/L *hsCRP* due to their relatively low sample size or reflecting acute-phase reactions of severe inflammation, but we examined the effect of very high *hsCRP* concentration on the risk of mortality

because it is possible that studies focusing on patient with *hsCRP* of 10 or higher could be conducted. In addition, the *hsCRP* level in this study was measured within 18 hours at a single institution to minimise measurement error/bias from institutional variations and to avoid bias from measurement or long-term storage before analysis.

Despite these strengths, the study also has several limitations. First, the use of a single measurement of *hsCRP* at baseline could reflect an inaccurate status of blood *hsCRP* levels in study participants and increase the instability of *hsCRP* due to random fluctuations over time. Nevertheless, a report⁴⁰ on long-term *hsCRP* variability suggested that *hsCRP* variability within an individual is relatively small and that the variability could not account for the association. Second, our study lacked information on medication use at recruitment and during the follow-up period. Several medications related to NCDs, including statins, ACE inhibitors, fibrates, niacin, thiazolidinedione and oestrogen/progestogen hormone, could influence *hsCRP* level,³⁷ however, we tried to overcome this limitation through advanced analysis after stratification by *NCD_{history}*. Third, because there is no available information on hormone replacement therapy (HRT) among women and we could not examine the influence of HRT on the association of *hsCRP* with risk of hormone-related cancer or CVD mortality among women, we could not suggest the effect of female hormones on the association. In addition, further studies are needed on the effects of obesity, although the inverse relationship between all-cause

mortality and obesity in our population was consistent with Zheng *et al*'s report in Asians.⁴¹ On the other hand, the inverse association of alcohol drinking with all-cause mortality could not be interpreted directly because we were not able to distinguish between mild drinkers and abusive alcohol drinkers and thus requires additional research in the future.

In conclusion, the association of *hsCRP* level is dose-responsively increased with the risk of all-cause mortality in men and women (particularly postmenopausal women). Otherwise, the association of *hsCRP* level with risk of cancer and CVD mortality could be attenuated by gender or NCD_{history}*

Contributors S-AL, X-OS and DK designed and conducted the research. S-AL and SOK analysed the data and performed the statistical analyses. HP and J-KL managed the data mining and collection. S-AL wrote the manuscript and approved the final version of the submitted manuscript, also is responsible for the overall content as guarantor. All authors read and approved the final manuscript.

Funding The authors have not declared a specific grant for this research from any funding agency in the public, commercial or not-for-profit sectors.

Competing interests None declared.

Patient and public involvement Patients and/or the public were not involved in the design, or conduct, or reporting, or dissemination plans of this research.

Patient consent for publication Not required.

Ethics approval This study involves human participants and was approved by the Institutional Review Board of the Seoul National University Hospital, Seoul, Korea (IRB no: E-1503-103-657). Participants gave informed consent to participate in the study before taking part.

Provenance and peer review Not commissioned; externally peer reviewed.

Data availability statement No data are available.

Supplemental material This content has been supplied by the author(s). It has not been vetted by BMJ Publishing Group Limited (BMJ) and may not have been peer-reviewed. Any opinions or recommendations discussed are solely those of the author(s) and are not endorsed by BMJ. BMJ disclaims all liability and responsibility arising from any reliance placed on the content. Where the content includes any translated material, BMJ does not warrant the accuracy and reliability of the translations (including but not limited to local regulations, clinical guidelines, terminology, drug names and drug dosages), and is not responsible for any error and/or omissions arising from translation and adaptation or otherwise.

Open access This is an open access article distributed in accordance with the Creative Commons Attribution Non Commercial (CC BY-NC 4.0) license, which permits others to distribute, remix, adapt, build upon this work non-commercially, and license their derivative works on different terms, provided the original work is properly cited, appropriate credit is given, any changes made indicated, and the use is non-commercial. See: <http://creativecommons.org/licenses/by-nc/4.0/>.

ORCID iD

Sang-Ah Lee <http://orcid.org/0000-0002-5079-9733>

REFERENCES

- 1 Pepys MB, Hirschfield GM. C-reactive protein: a critical update. *J Clin Invest* 2003;111:1805–12.
- 2 Elias-Smale SE, Kardys I, Oudkerk M, *et al*. C-reactive protein is related to extent and progression of coronary and extra-coronary atherosclerosis: results from the Rotterdam study. *Atherosclerosis* 2007;195:e195–202.
- 3 Koenig W, Khuseynova N, Baumert J, *et al*. Prospective study of high-sensitivity C-reactive protein as a determinant of mortality: results from the MONICA/KORA Augsburg cohort study, 1984–1998. *Clin Chem* 2008;54:335–42.
- 4 Ahmadi-Abhari S, Luben RN, Wareham NJ, *et al*. Seventeen year risk of all-cause and cause-specific mortality associated with C-reactive protein, fibrinogen and leukocyte count in men and women: the EPIC-Norfolk study. *Eur J Epidemiol* 2013;28:541–50.
- 5 Kuoppamäki M, Salminen M, Vahlberg T, *et al*. High sensitive C-reactive protein (hsCRP), cardiovascular events and mortality in the aged: a prospective 9-year follow-up study. *Arch Gerontol Geriatr* 2015;60:112–7.
- 6 Zuo H, Ueland PM, Ulvik A, *et al*. Plasma biomarkers of inflammation, the kynurenine pathway, and risks of all-cause, cancer, and cardiovascular disease mortality: the Hordaland health study. *Am J Epidemiol* 2016;183:249–58.
- 7 Nisa H, Hirata A, Kohno M, *et al*. High-Sensitivity C-reactive protein and risks of all-cause and cause-specific mortality in a Japanese population. *Asian Pac J Cancer Prev* 2016;17:2643–8.
- 8 Li Y, Zhong X, Cheng G, *et al*. Hs-CRP and all-cause, cardiovascular, and cancer mortality risk: a meta-analysis. *Atherosclerosis* 2017;259:75–82.
- 9 Vasto S, Candore G, Balistreri CR, *et al*. Inflammatory networks in ageing, age-related diseases and longevity. *Mech Ageing Dev* 2007;128:83–91.
- 10 Kelley-Hedgpepeth A, Lloyd-Jones DM, Colvin A, *et al*. Ethnic differences in C-reactive protein concentrations. *Clin Chem* 2008;54:1027–37.
- 11 Albert MA, Glynn RJ, Buring J, *et al*. C-reactive protein levels among women of various ethnic groups living in the United States (from the women's health study). *Am J Cardiol* 2004;93:1238–42.
- 12 Khera A, McGuire DK, Murphy SA, *et al*. Race and gender differences in C-reactive protein levels. *J Am Coll Cardiol* 2005;46:464–9.
- 13 Lakoski SG, Cushman M, Criqui M, *et al*. Gender and C-reactive protein: data from the multiethnic study of atherosclerosis (MESA) cohort. *Am Heart J* 2006;152:593–8.
- 14 Matthews KA, Sowers MF, Derby CA, *et al*. Ethnic differences in cardiovascular risk factor burden among middle-aged women: study of women's health across the nation (SWAN). *Am Heart J* 2005;149:1066–73.
- 15 Lee JH, Yeom H, Kim HC, *et al*. C-reactive protein concentration is associated with a higher risk of mortality in a rural Korean population. *J Prev Med Public Health* 2016;49:275–87.
- 16 Sung K-C, Ryu S, Chang Y, *et al*. C-reactive protein and risk of cardiovascular and all-cause mortality in 268 803 East Asians. *Eur Heart J* 2014;35:1809–16.
- 17 Kengne AP, Batty GD, Hamer M, *et al*. Association of C-reactive protein with cardiovascular disease mortality according to diabetes status: pooled analyses of 25,979 participants from four U.K. prospective cohort studies. *Diabetes Care* 2012;35:396–403.
- 18 Heikkilä K, Ebrahim S, Lawlor DA. A systematic review of the association between circulating concentrations of C reactive protein and cancer. *J Epidemiol Community Health* 2007;61:824–33.
- 19 Dahl M, Vestbo J, Lange P, *et al*. C-Reactive protein as a predictor of prognosis in chronic obstructive pulmonary disease. *Am J Respir Crit Care Med* 2007;175:250–5.
- 20 Wang X, Bao W, Liu J, *et al*. Inflammatory markers and risk of type 2 diabetes: a systematic review and meta-analysis. *Diabetes Care* 2013;36:166–75.
- 21 Ishii S, Cauley JA, Greendale GA, *et al*. C-reactive protein, bone strength, and nine-year fracture risk: data from the study of women's health across the nation (Swan). *J Bone Miner Res* 2013;28:1688–98.
- 22 Kim Y, Han B-G, GESg K, KoGES group. Cohort profile: the Korean genome and epidemiology study (KoGES) Consortium. *Int J Epidemiol* 2017;46:1350.
- 23 Shin S, Lee H-W, Kim CE, *et al*. Egg consumption and risk of metabolic syndrome in Korean adults: results from the health examinees study. *Nutrients* 2017;9:9070687. doi:10.3390/nu9070687
- 24 Pan W-H, Yeh W-T. How to define obesity? Evidence-based multiple action points for public awareness, screening, and treatment: an extension of Asian-Pacific recommendations. *Asia Pac J Clin Nutr* 2008;17:370–4.
- 25 National Cholesterol Education Program (NCEP) Expert Panel on Detection, Evaluation, and Treatment of High Blood Cholesterol in Adults (Adult Treatment Panel III). Third report of the National cholesterol education program (NCEP) expert panel on detection, evaluation, and treatment of high blood cholesterol in adults (adult treatment panel III) final report. *Circulation* 2002;106:3143–421.
- 26 Heinzl H, Kaider A. Gaining more flexibility in COX proportional hazards regression models with cubic spline functions. *Comput Methods Programs Biomed* 1997;54:201–8.
- 27 MacGregor AJ, Gallimore JR, Spector TD, *et al*. Genetic effects on baseline values of C-reactive protein and serum amyloid A protein: a comparison of monozygotic and dizygotic twins. *Clin Chem* 2004;50:130–4.
- 28 Ledue TB, Rifai N. Preanalytic and analytic sources of variations in C-reactive protein measurement: implications for cardiovascular disease risk assessment. *Clin Chem* 2003;49:1258–71.

- 29 Emerging Risk Factors Collaboration, Kaptoge S, Di Angelantonio E, *et al.* C-reactive protein concentration and risk of coronary heart disease, stroke, and mortality: an individual participant meta-analysis. *Lancet* 2010;375:132–40.
- 30 Lee Y-J, Lee J-H, Shin Y-H, *et al.* Gender difference and determinants of C-reactive protein level in Korean adults. *Clin Chem Lab Med* 2009;47:863–9.
- 31 Doran B, Zhu W, Muennig P. Gender differences in cardiovascular mortality by C-reactive protein level in the United States: evidence from the National health and nutrition examination survey III. *Am Heart J* 2013;166:45–51.
- 32 Gaskins AJ, Wilchesky M, Mumford SL, *et al.* Endogenous reproductive hormones and C-reactive protein across the menstrual cycle: the BioCycle study. *Am J Epidemiol* 2012;175:423–31.
- 33 Gilliver SC. Sex steroids as inflammatory regulators. *J Steroid Biochem Mol Biol* 2010;120:105–15.
- 34 Man SFP, Connett JE, Anthonisen NR, *et al.* C-reactive protein and mortality in mild to moderate chronic obstructive pulmonary disease. *Thorax* 2006;61:849–53.
- 35 Di Napoli M, Papa F. Angiotensin-converting enzyme inhibitor use is associated with reduced plasma concentration of C-reactive protein in patients with first-ever ischemic stroke. *Stroke* 2003;34:2922–9.
- 36 Sidhu JS, Cowan D, Kaski J-C. The effects of rosiglitazone, a peroxisome proliferator-activated receptor-gamma agonist, on markers of endothelial cell activation, C-reactive protein, and fibrinogen levels in non-diabetic coronary artery disease patients. *J Am Coll Cardiol* 2003;42:1757–63.
- 37 Heikkilä K, Ebrahim S, Rumley A, *et al.* Associations of circulating C-reactive protein and interleukin-6 with survival in women with and without cancer: findings from the British women's heart and health study. *Cancer Epidemiol Biomarkers Prev* 2007;16:1155–9.
- 38 Marsik C, Kazemi-Shirazi L, Schickbauer T, *et al.* C-reactive protein and all-cause mortality in a large hospital-based cohort. *Clin Chem* 2008;54:343–9.
- 39 Proctor MJ, McMillan DC, Horgan PG, *et al.* Systemic inflammation predicts all-cause mortality: a glasgow inflammation outcome study. *PLoS One* 2015;10:e0116206.
- 40 Chen T-hsu, Gona P, Sutherland PA, *et al.* Long-term C-reactive protein variability and prediction of metabolic risk. *Am J Med* 2009;122:53–61.
- 41 Zheng W, McLerran DF, Rolland B, *et al.* Association between body-mass index and risk of death in more than 1 million Asians. *N Engl J Med* 2011;364:719–29.

Supplement 1. The association of serum *hs*CRP level with the risk of all-cause mortality

	PY	E	MR	aHR	HR _{1year}	HR _{2year}
All subjects						
Continuous	781 035	2229	28.5	1.017 (1.012-1.021)	1.015 (1.010-1.020)	1.014 (1.009-1.019)
≤1.00	539 271	1153	21.4	Reference	Reference	Reference
1.01-1.50	90 911	308	33.9	1.26 (1.10-1.45)	1.27 (1.10-1.45)	1.21 (1.04-1.40)
1.51-2.00	44 615	163	36.5	1.28 (1.08-1.53)	1.28 (1.07-1.53)	1.26 (1.04-1.52)
2.01-2.50	25 139	117	46.5	1.53 (1.25-1.89)	1.51 (1.22-1.87)	1.49 (1.19-1.87)
2.51-3.00	16 996	72	42.4	1.39 (1.08-1.80)	1.31 (1.00-1.72)	1.23 (0.92-1.65)
3.01-4.00	19 667	103	52.4	1.61 (1.29-2.01)	1.62 (1.29-2.03)	1.64 (1.30-2.08)
4.01-6.00	17 933	102	56.9	1.84 (1.48-2.28)	1.77 (1.41-2.21)	1.70 (1.34-2.16)
6.01-10.00	13 019	88	67.6	2.02 (1.59-2.56)	1.96 (1.54-2.50)	1.93 (1.49-2.51)
>10.0	13 484	123	91.2	2.59 (2.12-3.16)	2.41 (1.95-2.97)	2.26 (1.80-2.84)
<i>P</i> -trend				<.001	<.001	<.001
Men						
Continuous	261 321	1365	52.2	1.019 (1.014-1.025)	1.017 (1.011-1.023)	1.017 (1.010-1.023)
≤1.00	163 068	638	39.1	Reference	Reference	Reference
1.01-1.50	36 094	190	52.6	1.27 (1.07-1.51)	1.28 (1.07-1.53)	1.22 (1.01-1.47)
1.51-2.00	17 946	103	57.4	1.34 (1.07-1.67)	1.34 (1.07-1.68)	1.35 (1.06-1.72)
2.01-2.50	10 059	77	76.5	1.56 (1.20-2.03)	1.53 (1.16-2.00)	1.47 (1.10-1.96)
2.51-3.00	6959	54	77.6	1.71 (1.27-2.29)	1.57 (1.15-2.15)	1.46 (1.04-2.05)
3.01-4.00	8177	77	94.2	1.88 (1.45-2.43)	1.94 (1.50-2.52)	1.92 (1.46-2.54)
4.01-6.00	7425	75	101.0	2.05 (1.59-2.63)	1.95 (1.49-2.53)	1.91 (1.44-2.52)
6.01-10.00	5456	59	108.1	2.03 (1.52-2.73)	1.96 (1.44-2.66)	1.85 (1.33-2.58)
>10.0	6137	92	149.9	2.84 (2.25-3.58)	2.66 (2.08-3.39)	2.58 (1.99-3.35)
<i>P</i> -trend				<.001	<.001	<.001
Women						
Continuous	519 714	864	16.6	1.013 (1.004-1.021)	1.011(1.002-1.021)	1.010 (0.999-1.021)
≤1.00	376 203	515	13.7	Reference	Reference	Reference
1.01-1.50	54 817	118	21.5	1.28 (1.03-1.59)	1.27 (1.02-1.58)	1.23 (0.97-1.56)
1.51-2.00	26 669	60	22.5	1.23 (0.92-1.64)	1.21 (0.90-1.63)	1.14 (0.83-1.56)
2.01-2.50	15 080	40	26.5	1.52 (1.09-2.14)	1.52 (1.08-2.15)	1.56 (1.09-2.24)
2.51-3.00	10 037	18	17.9	0.84 (0.49-1.44)	0.87 (0.51-1.48)	0.83 (0.46-1.47)
3.01-4.00	11 490	26	22.6	1.16 (0.75-1.81)	1.09 (0.68-1.72)	1.21 (0.76-1.93)
4.01-6.00	10 508	27	25.7	1.48 (0.99-2.22)	1.47 (0.97-2.22)	1.36 (0.86-2.14)
6.01-10.00	7563	29	38.3	2.00 (1.34-2.98)	1.98 (1.32-2.98)	2.10 (1.39-3.19)
>10.0	7347	31	42.2	2.02 (1.36-3.02)	1.84 (1.21-2.81)	1.51 (0.93-2.47)
<i>P</i> -trend				<.001	<.001	0.001
Premenopause						
≤1.00	141 286	96	6.8			
1.01-2.00	20 500	20	9.8	1.52 (0.92-2.52)	1.49 (0.89-2.50)	1.57 (0.90-2.73)
2.01-3.00	5835	6	10.3	1.76 (0.77-4.06)	1.83 (0.79-4.22)	1.42 (0.52-3.93)
3.01-10.0	6886	6	8.7	1.51 (0.66-3.50)	1.31 (0.53-3.25)	1.21 (0.44-3.36)
>10.0	1759	4	22.7	2.57 (0.81-8.14)	2.63 (0.83-8.37)	2.09 (0.51-8.58)
<i>P</i> -trend				0.020	0.036	0.150
Postmenopause						
≤1.00	192 164	366	19.0			
1.01-2.00	52 897	145	27.4	1.26 (1.03-1.55)	1.25 (1.02-1.54)	1.18 (0.95-1.48)
2.01-3.00	16 943	44	26.0	1.11 (0.80-1.56)	1.12 (0.80-1.57)	1.19 (0.83-1.68)
3.01-10.0	19 687	67	34.0	1.49 (1.13-1.97)	1.47 (1.10-1.95)	1.52 (1.13-2.05)
>10.0	4828	27	55.9	2.09 (1.37-3.21)	1.88 (1.19-2.96)	1.56 (0.92-2.63)
<i>P</i> -trend				<0.001	0.001	0.003

PY: Person-year, E: Number of death, MR: Mortality rate (10,000 person year)

aHR: Adjusted for age, gender, education, job, marital status, BMI, non-communicable disease history, smoking, alcohol consumption and exercise

HR_{1year}: aHR after exclude subjects who died within 1 yr f/u time

HR_{2year}: aHR after exclude subjects who died within 2 yr f/u time

Supplement 2. The association between serum *hs*CRP level and all-cause mortality by gender and non-communicable disease history (NCD_{history}) at recruitment

	Healthy subjects at recruitment					Subjects with NCD _{history} at recruitment				
	E	MR	aHR	HR _{1year}	HR _{2year}	E	MR	aHR	HR _{1year}	HR _{2year}
All										
≤ 1.00	517	15.1	Ref	Ref	Ref	636	32.3	Ref	Ref	Ref
1.01-2.00	145	22.9	1.20	1.19	1.16	326	45.1	1.20	1.19	1.16
2.01-3.00	53	29.3	1.38	1.37	1.32	136	56.6	1.51	1.46	1.41
3.01-10.0	102	46.8	2.22	2.15	2.15	191	66.3	1.62	1.60	1.58
>10.0	40	61.3	2.38	2.23	2.27	83	118.9	2.74	2.54	2.29
<i>P</i> -trend			<.001	<.001	<.001			<.001	<.001	<.001
Men										
≤ 1.00	270	29.5	Ref	Ref	Ref	368	51.4	Ref	Ref	Ref
1.01-2.00	89	35.8	1.11	1.11	1.13	204	70.0	1.40	1.41	1.33
2.01-3.00	33	46.3	1.22	1.17	1.15	98	99.0	1.82	1.73	1.61
3.01-10.0	70	76.8	2.14	2.08	2.03	141	118.1	1.92	1.90	1.83
>10.0	31	110.0	2.60	2.49	2.73	61	183.1	3.05	2.83	2.58
<i>P</i> -trend			<.001	<.001	<.001			<.001	<.001	<.001
Women										
≤ 1.00	247	9.8	Ref	Ref	Ref	268	21.4	Ref	Ref	Ref
1.01-2.00	56	14.6	1.35	1.32	1.20	122	28.3	1.19	1.20	1.19
2.01-3.00	20	18.2	1.61	1.66	1.60	38	26.9	1.06	1.06	1.11
3.01-10.0	32	25.2	2.31	2.23	2.37	50	29.7	1.16	1.14	1.17
>10.0	9	24.3	1.69	1.49	1.12	22	60.3	2.15	1.99	1.68
<i>P</i> -trend			<.001	<.001	0.001			0.018	0.043	0.084

E: Number of death, MR: Mortality rate (10 000 person year)

aHR: Adjusted for age, gender, education, job, marital status, BMI, non-communicable disease history, smoking, alcohol consumption and exercise

HR_{1year}: aHR after exclude subjects who died within 1 yr f/u timeHR_{2year}: aHR after exclude subjects who died within 2 yr f/u time