

BMJ Open

BMJ Open is committed to open peer review. As part of this commitment we make the peer review history of every article we publish publicly available.

When an article is published we post the peer reviewers' comments and the authors' responses online. We also post the versions of the paper that were used during peer review. These are the versions that the peer review comments apply to.

The versions of the paper that follow are the versions that were submitted during the peer review process. They are not the versions of record or the final published versions. They should not be cited or distributed as the published version of this manuscript.

BMJ Open is an open access journal and the full, final, typeset and author-corrected version of record of the manuscript is available on our site with no access controls, subscription charges or pay-per-view fees (<http://bmjopen.bmj.com>).

If you have any questions on BMJ Open's open peer review process please email info.bmjopen@bmj.com

BMJ Open

Australasian registry of Severe Cutaneous Adverse Reactions (AUS-SCAR)

Journal:	<i>BMJ Open</i>
Manuscript ID	bmjopen-2021-055906
Article Type:	Protocol
Date Submitted by the Author:	02-Aug-2021
Complete List of Authors:	James, Fiona; Austin Health, Department of Infectious Diseases Goh, Michelle S Y; Department of Infectious Diseases Mouhtouris, Effie; Austin Health, Department of Infectious Diseases Vogrin, Sara; The University of Melbourne, Department of Medicine Chua, Kyra; Austin Health, Department of Infectious Diseases Holmes, NE ; Austin Health Awad, Andrew; Austin Health, Department of Infectious Diseases Copaescu, Ana-Maria; Austin Health, Department of Infectious Diseases De Luca, Joseph; Austin Health, Centre for Antibiotic Allergy and Research, Department of Infectious Diseases Zubrinich, Celia; Alfred Health, Allergy, Asthma & Clinical Immunology; Monash University, School of Public Health and Preventive Medicine Gin, Douglas; Alfred Hospital, Department of Dermatology Cleland, H ; Alfred Hospital, Douglas, Abby; Peter MacCallum Cancer Centre, Infectious Diseases and Infection Control Kern, Johannes; The Royal Melbourne Hospital, Dermatology Department Katelaris, Constance; Campbelltown Hospital, Allergy / Clinical Immunology Thien, Francis ; Monash University, Eastern Health Clinical School; Eastern Health, Department of Respiratory and Sleep Medicine Barnes, Sara; Monash Health, Department of Allergy/Immunology Yun, James; Nepean Hospital, Immunology and Rheumatology Tong, Winnie; St Vincent's Hospital Sydney, HIV & Immunology Smith, William; Royal Adelaide Hospital, Clinical Immunology and Allergy Carr, Andrew; St Vincent's Hospital Sydney, Immunology Anderson, Tara; Royal Hobart Hospital, Department of Infectious Diseases Legg, Amy; Royal Darwin Hospital, Pharmacy Department Bourke, Jack; Fiona Stanley Hospital, Department of Allergy and Immunology Mackay, Laura; The University of Melbourne, Department of Microbiology and Immunology Aung, Ar Kar; Alfred Hospital, Department of General Medicine Phillips, Elizabeth; Murdoch University, Institute for Immunology and Infectious Diseases; Vanderbilt University Medical Center, Department of Infectious Diseases Trubiano, Jason ; Austin Health, Infectious Diseases; Peter MacCallum Cancer Centre, Infectious Diseases and Infection Control
Keywords:	IMMUNOLOGY, Adverse events < THERAPEUTICS, Toxicity <

1
2
3
4
5
6
7
8
9
10
11
12
13
14
15
16
17
18
19
20
21
22
23
24
25
26
27
28
29
30
31
32
33
34
35
36
37
38
39
40
41
42
43
44
45
46
47
48
49
50
51
52
53
54
55
56
57
58
59
60

	THERAPEUTICS, Allergy < THORACIC MEDICINE, EPIDEMIOLOGY, PREVENTIVE MEDICINE

SCHOLARONE™
Manuscripts

Australasian registry of Severe Cutaneous Adverse Reactions (AUS-SCAR)

Fiona James¹, Michelle S Y Goh^{1,2,9}, Effie Mouhtouris¹, Sara Vogrin³, Kyra Chua^{1,5}, Natasha Holmes^{1,5}, Andrew Awad¹, Ana Copaescu^{1,4}, Joseph De Luca^{1,5}, Celia Zubrinich^{7,8}, Heather Cleland^{7,8}, Douglas Gin¹⁰, Abby Douglas^{11,25}, Johannes Kern¹², Connie Katelaris¹³, Francis Thien¹⁴, Sara Barnes¹⁵, James Yun¹⁶, Winnie Tong¹⁷, Andrew Carr¹⁷, William Smith¹⁸, Tara Anderson¹⁹, Jack Bourke²⁰, Amy Legg²¹, Laura Mackay²², Ar Kar Aung⁶, Elizabeth Phillips^{23,24}, Jason Trubiano^{1,4,25}

1. Centre for Antibiotic Allergy and Research, Department of Infectious Diseases, Austin Health, Heidelberg, Victoria, Australia
2. Department of Dermatology, St Vincent's Hospital, Fitzroy, Victoria, Australia
3. Department of Medicine, St Vincent's Hospital, University of Melbourne, Fitzroy, Australia
4. Department of Infection and Immunity, McGill University Health Centre, Montreal, Canada
5. Department of Medicine (Austin Health), The University of Melbourne, Heidelberg, Victoria, Australia
6. Department of General Medicine, Alfred Hospital, Melbourne, Victoria, Australia
7. Department of Allergy, Immunology & Respiratory Medicine (AIRmed), Alfred Hospital, Melbourne, Australia
8. School of Public Health and Preventive Medicine, Monash University, Melbourne, Victoria, Australia
9. Victorian Adult Burns Service, Alfred Hospital, Melbourne, Victoria, Australia
10. Department of Dermatology, Alfred Health, Melbourne, Victoria, Australia
11. Department of Infectious Diseases and Infection Prevention, Peter MacCallum Cancer Centre, The University of Melbourne, Parkville, VIC, Australia
12. Dermatology Department, The Royal Melbourne Hospital, Parkville, Victoria, Australia
13. Immunology & Allergy Unit, Campbelltown Hospital, New South Wales, Australia
14. Respiratory Medicine, Eastern Health, Box Hill and Monash University, Melbourne, VIC, Australia
15. Department of Allergy/Immunology, Monash Health, Melbourne, VIC, Australia
16. Immunology and Rheumatology, Nepean Hospital, Sydney, NSW, Australia
17. HIV & Immunology Department, St Vincent's Hospital, UNSW Sydney, New South Wales, Australia
18. Immunology and Allergy Department, Royal Adelaide Hospital, Adelaide, Australia
19. Department of Infectious Diseases, Royal Hobart Hospital, Hobart, TAS, Australia
20. Department of Allergy and Immunology, Fiona Stanley Hospital, Murdoch, Australia
21. Pharmacy Department, Royal Darwin Hospital, Tiwi, NT, Australia
22. Department of Microbiology and Immunology, University of Melbourne, Melbourne, Victoria, Australia
23. Institute for Immunology and Infectious Diseases, Murdoch University, Murdoch, Western Australia, Australia
24. Department of Infectious Diseases, Vanderbilt University Medical Centre, Nashville, Tennessee, USA.
25. The National Centre for Infections in Cancer, Peter MacCallum Cancer Centre, Melbourne, Victoria, Australia

Corresponding Author:

Fiona James
 Centre for Antibiotic Allergy and Research
 Department of Infectious Diseases, Austin Health
 145 Studley Road, Heidelberg VIC 3121
 AUSTRALIA
 Fiona.james@austin.org.au

Protocol Version: 8

Funding: Austin Health

Trial Sponsor:

A/Prof Jason Trubiano
 Centre for Antibiotic Allergy and Research
 Department of Infectious Diseases, Austin Health
 145 Studley Road, Heidelberg VIC 3121
 AUSTRALIA

Abstract

Introduction Severe cutaneous adverse reactions (SCAR) are a group of T cell-mediated hypersensitivities associated with significant morbidity, mortality and hospital costs¹. Clinical phenotypes include Stevens-Johnson Syndrome (SJS), toxic epidermal necrolysis (TEN), drug reaction with eosinophilia and systemic symptoms (DRESS) and acute generalised exanthematous pustulosis (AGEP). In this Australasian, multi-centre, prospective registry, we plan to examine the clinical presentation, drug causality, genomic predictors, potential diagnostic approaches, treatments and long-term outcomes of SCAR in Australia and New Zealand.

Methods and analysis Adult and adolescent patients with SCAR including SJS, TEN, DRESS, AGEP and another T cell-mediated hypersensitivity, generalised bullous fixed drug eruption (GBFDE), will be prospectively recruited. A waiver of consent has been granted for some sites to retrospectively include cases which result in early mortality. DNA will be collected for all prospective cases. Blood, blister fluid and skin biopsy sampling is optional and subject to patient consent and site capacity. To develop culprit drug identification and prevention, genomic testing will be performed to confirm HLA type and ex vivo testing will be performed via IFN- γ release ELISpot assay using collected peripheral blood mononuclear cells (PBMCs). The long term outcomes of SCAR will be investigated with a 12-month quality of life survey and examination of prescribing and mortality data.

Ethics and dissemination This study was reviewed and approved by the Austin Health Human Research Ethics Committee (HREC/50791/Austin-19). Results will be published in peer-reviewed journals and presented at relevant conferences.

Registration Number: ACTRN12619000241134

Strengths and limitations of the study

- The strength of AUS-SCAR lies in its prospective design, allowing for the real-time collection of clinical data, standardised investigation and sampling for genomic evaluation and ex-vivo diagnostics
- A limitation of the sampling strategy is the large number of PBMCs required for successful ELISpot assay, complicated by the poor viability of cells from acute bleeds due to critical illness
- Many hospital-adjacent laboratories are also not set up to process PBMCs, blister fluid or skin specimens requiring same-day transport to specialised research labs
- Regarding recruitment, there will likely be some selection bias for less critically ill patients due to the challenges surrounding obtaining consent
- Finally, the registry is not designed to achieve complete case capture across the study period and recruiting the target sample size will be dependent on successful recognition of cases at each site

INTRODUCTION

SCAR are a group of T cell-mediated hypersensitivities – including Stevens-Johnson Syndrome (SJS), toxic epidermal necrolysis (TEN), drug reaction with eosinophilia and systemic symptoms (DRESS) and acute generalized exanthematous pustulosis (AGEP) (1). Other severe T cell-mediated hypersensitivities include diseases such as generalized bullous fixed drug eruption (GBFDE), drug-induced liver injury (DILI) and acute interstitial nephritis (AIN) (1, 2). SCAR can be associated with significant morbidity, hospital costs, increased demand for specialist testing and high mortality (3-6).

1
2
3 Despite this, an understanding of the clinical, genomic and pharmacological predictors of each
4 phenotype remains absent from current practice. Further, there is currently a lack of consistency
5 among the recommendations in treatment guidelines for these severe reactions.
6

7 Causality assessment in SCAR is often complex as multiple drugs are frequently involved (3, 7-9).
8 Whilst the use of skin testing (*in vivo*) has been increasingly employed, it is hampered by low
9 sensitivity and concerns around safety (10-12). Progress has been made in understanding the
10 underlying immune mechanisms and genetic predisposition of SCAR (13), providing strong support
11 for the role of HLA typing in identifying specific drug-associated reactions (e.g. HLA*B:57:01 for
12 abacavir hypersensitivity, HLA-B*58:01 for allopurinol hypersensitivity) (14, 15). Further association
13 studies are required, however, to capitalise on this knowledge and previously provided roadmap. The
14 use of novel *ex vivo* T-cell diagnostics to aid drug causality assessment, including lymphocyte
15 transformation testing (LTT) and IFN- γ Enzyme Linked ImmunoSpot (ELISpot) Assay, has been
16 utilized with some success in a research setting but their clinical utility is not yet established (12, 16-
17 22).
18
19

20 The long-term outcomes of SCAR including quality of life, disease recurrence, inadvertent drug re-
21 exposure and medication safety are not well-described. The development of a regional clinical and
22 DNA registry of SCAR will allow investigators to (i) perform surveillance for new and emerging drug
23 causality, (ii) develop causality and phenotypic prediction rules, (iii) understand best-practice
24 treatment approaches, (iv) discover genomic predictors that prevent SCAR onset and (v) improve
25 long-term outcomes and medication safety. The additional biospecimen component of the study will
26 allow investigators to assess the utility of T-cell diagnostics in aiding drug causality. While national
27 SCAR registries have been set up successfully in Europe (RegiSCAR) and Korea (KoSCAR) (23-24),
28 AUS-SCAR will be the first registry of severe drug allergy in the Australasian region.
29
30
31
32

33 **METHODS AND ANALYSIS**

34
35 AUS-SCAR is an Australasian, multicentre, prospective registry of severe cutaneous adverse
36 reactions in adults and adolescents > 12 years of age. Participating sites for recruitment include Austin
37 Health, Alfred Health, Eastern Health, Peter MacCallum Cancer Centre, St Vincent's Hospital
38 Melbourne, Monash Health, Royal Melbourne Hospital, Epworth Healthcare, Campbelltown Hospital,
39 Nepean Hospital, St Vincent's Hospital Sydney, Fiona Stanley Hospital, Sir Charles Gairdner
40 Hospital, Royal Brisbane and Women's Hospital, Queensland Children's Hospital, Royal Adelaide
41 Hospital, Flinders Medical Centre, Royal Darwin Hospital, Launceston General Hospital and
42 Auckland City Hospital. The Peter Doherty Institute for Infection and Immunity and Institute for
43 Immunology and Infectious Diseases (IIID) are collaborating sites for sample analysis. Recruitment
44 commenced in July 2019 and is planned to continue across all sites until accrual has reached $n = 500$.
45
46
47

48 **Study Oversight**

49 A 5-7 person steering committee will be formed following nominations from participating site
50 principal investigators. Steering Committee members will meet regularly to discuss the direction of
51 the project, assess requests from investigators and identify any potential risks or issues. The chair of
52 the Steering Committee will be the Chief Investigator. A Steering Committee member can step down
53 from this role at any time and nominations for a new member will be sought from participating site
54 principal investigators. The Steering Committee should have at least one of the following at all times:
55 infectious diseases physician, allergist/immunologist and dermatologist.
56
57

58 The clinical and DNA database and results of the study are the common property of AUS-SCAR
59 investigators and cannot be utilised without the formal authorization of the Steering Committee. The
60

release of results at conference proceedings, meetings and/or in publication are decided upon by the Steering Committee of AUS-SCAR.

Project development

Any principal investigator can propose a project utilizing AUS-SCAR data. This proposal will be forwarded to all investigators for comment and the Steering Committee will provide (i) feedback to the proposing investigator and (ii) approval/non-approval of the project.

Patient Involvement

Although they have not been involved in the study design, patients will be invited to assist with identifying the best methods of disseminating results to patients and the public following publication. Patients or consumer representatives may also be considered for inclusion in the Steering Committee.

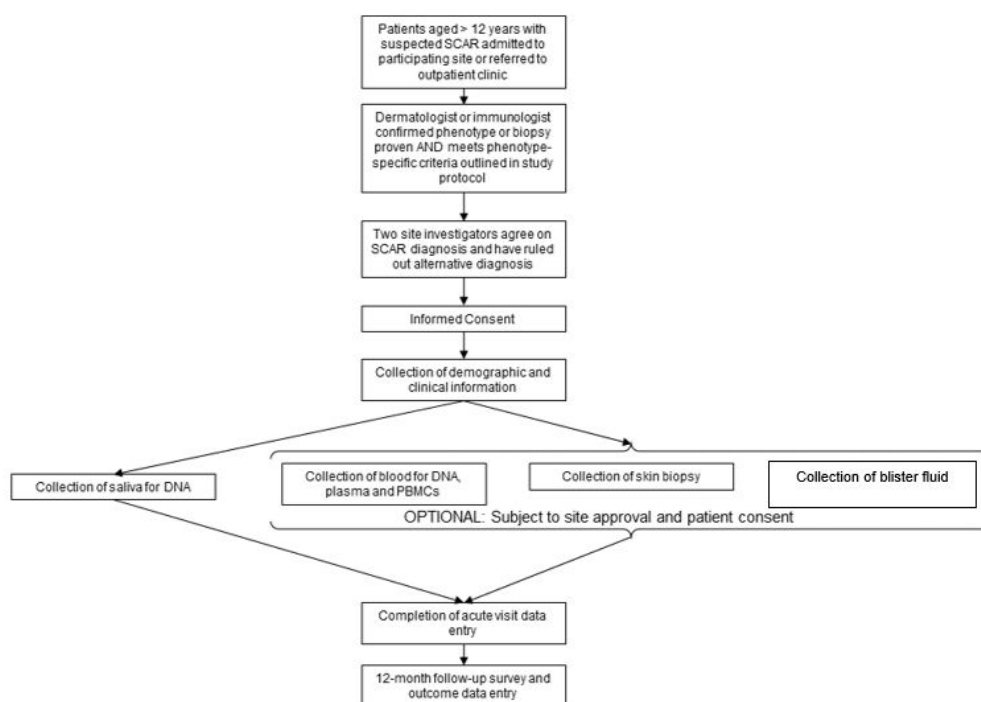


Figure 1. Overview of AUS-SCAR study design

Participants

Patients will be invited to participate in the registry if 1) they are admitted to or referred to a participating site with a suspected SCAR, 2) two site investigators have agreed on inclusion, 3) SCAR is confirmed by a site dermatologist or immunologist or is biopsy proven and 4) the SCAR phenotype is consistent with disease-specific criteria and alternative diagnoses have been ruled out. Disease-specific criteria for SJS/TEN includes the presence of widespread erythema with skin detachment and more than 1 blister. For GBFDE, there must be multifocal, widespread, bullous-type fixed drug eruption characterised by sharply defined bullae at site of recurrent drug administration. Criteria for DRESS and AGEP are outlined in **Supplementary Tables 1 and 2**, respectively.

At a later stage of the project, extended recruitment may include the following phenotypes, following approval by > 50% of principal investigators and the Project Steering Committee:

- a. **AIN** – Required hospitalization and biopsy proven with acute kidney injury (increase in serum creatinine by ≥ 0.3 mg/dl within 48 hours or increase in serum creatinine to ≥ 1.5 times baseline within 7 days or urine output < 0.5 ml/kg/h for 6 hours) (25) with other common causes excluded. Non-biopsy proven cases with a single implicated drug, urinary and peripheral eosinophilia, acute kidney injury and resolution of renal disease post drug removal can be included.
- b. **DILI** – Required hospitalization and biopsy proven with ≥ 5 x upper limit of normal (ULN) for ALT or ≥ 2 ULN for ALP, or ≥ 3 ULN for ALT with bilirubin ≥ 2 ULN (26). Non-biopsy proven cases with a single implicated drug, acute liver injury, autoimmune and other causes excluded and resolution of liver disease post drug removal can be included.
- c. **FDE** – Dermatologist confirmed, well-defined, circular, hyper-pigmented single or a few plaques that recur in fixed locations upon ingestion of drug (therefore requires 2 or more occurrences).

Biospecimen Collection and Analysis

Part 1. Clinical data and DNA collection

Following informed consent, baseline patient demographics, medical history and clinical data including histopathology and clinical photography will be collected from the patient and medical record and entered into a secure REDCap database. Consent may be obtained from the patient, parent/guardian or medical treatment decision-maker, as appropriate and subject to local or national law. A waiver of consent has been obtained for some participating institutions to collect clinical data retrospectively for patients that die prior to obtaining informed consent.

DNA will be collected for all patients enrolled prospectively: this will be extracted from saliva for patients who do not consent to additional sample collection or from whole blood or peripheral blood mononuclear cells (PBMCs) for patients who agree to additional blood collection. Genomic testing will be performed at the Institute for Immunology and Infectious Diseases (IIID), Murdoch University, Perth, Western Australia for HLA-A, HLA-B, HLA-C, DR/DQ/DP. Four-digit typing is performed on extracted DNA using the 454 FLX platform. Specific HLA loci are PCR-amplified using sample specific MID-tagged primers that amplify polymorphic exons from Class I (A, B, C Exons 2 and 3) and Class II (DQ, Exons 2 and 3; DRB and DPB1, Exon 1) MHC genes. Amplified DNA products from unique MID-tagged products (up to 48 MIDs) are then pooled in equimolar ratios and subjected to library preparation, quantitation and emulsion PCR suitable for entry into the 454 FLX sequencing pipeline. Clonally enriched beads are used for 454 Titanium chemistry based sequencing on the 454 FLX+ sequencer. Sequences are then separated by MID tags and alleles called using an in house accredited HLA allele caller software pipeline using the latest IMGT HLA allele database as the allele reference library. Further Genome Wide Association Studies (GWAS), RNA-seq and virologic assessment may be performed on stored DNA samples to determine if genetic and viral variants are associated with SCAR phenotype.

Part 2. Additional biospecimen collection

This part of the study is optional for participating sites and for patients. Samples will need to be stored at the participating site or at a collaborating AUS-SCAR site if there is capacity. Informed consent must

1
2
3 be obtained for all samples requested. The sampling schedule is outlined below and in **Supplementary**
4 **Table 3.**
5
6

7 **Blood**

8
9 For adults, an initial blood sample of 100 - 150 ml will be taken following informed consent. A reduced
10 blood volume of 20 – 50 ml is taken for patients under 18 years of age. A convalescent follow-up blood
11 draw of the same volume will be taken at 12 months post-SCAR onset for consenting patients. Repeat
12 blood draws may be requested at both time points if the full volume was unable to be collected or cell
13 viability is poor, subject to ongoing patient consent.
14
15

16 **Skin biopsy**

17
18 A 3-4mm punch biopsy may be taken from an affected area at the acute stage and 12 months post-
19 SCAR onset. For a subset of patients, repeat biopsies may be requested for comparison studies.
20
21

22 **Blister fluid**

23
24 For patients with blisters present, blister fluid of any volume may be collected into a heparinised tube
25 for the extraction of PBMCs. For patients whose blisters reform, additional fluid collection may be
26 requested.
27
28

29 **Additional clinical samples**

30
31 Additional clinical samples may be collected if considered to be of potential clinical relevance by the
32 site investigator (eg. cerebrospinal fluid, lymph node aspirate).
33
34

35 **Sample processing**

36
37 Samples are to be processed and stored at participating sites (or a collaborating AUS-SCAR site on
38 request from participating site) and cannot be used in AUS-SCAR studies without written approval
39 from the participating site. The participating site can choose to utilize these samples for any research
40 project they have additional local ethics approval for, without consent required from AUS-SCAR
41 investigators. The Doherty Institute for Infection and Immunity or Institute for Immunology and
42 Infectious Diseases are available for assistance with sample processing where possible.
43
44
45
46
47

48 **Part 3. Patient follow up**

49
50 A 12-month follow-up will be performed to collect data regarding (i) drug utilization, (ii) health
51 outcomes and (iii) quality of life (**Supplementary Materials**). Mortality/morbidity and prescribing data
52 will be extracted from the medical record. For available patients a quality of life assessment will be
53 performed using the previously validated and adapted Drug Hypersensitivity Quality of Life
54 Questionnaire (DrHy-Q) (27). A telephone script is provided with the DrHy-Q in Supplementary
55 Materials. The questionnaire may also be sent out via email. Prescribing and mortality data may be
56 obtained from PBS following approval or the participant's GP where not available from the medical
57 record or patient.
58
59
60

Study Aims

1. To develop a national registry of SCAR to ensure continuous surveillance of new and emerging causative drugs and improve pharmacovigilance
2. To describe the causality and epidemiology of SCAR in Australasia
3. To determine patient, drug and clinical factors that predict SCAR phenotypes and which treatments improve outcomes
4. To determine the treatments employed for SCAR in Australasia and describe patient outcomes
5. To determine pharmacogenomic and genomic associations in SCAR.
6. To examine the long term impacts of SCAR including restricted medication use and QOL impact

Primary outcome measures

- Proportions (n, %) of SCAR secondary to antibiotics or non-antibiotics
 - Proportions (n, %) for each drug class

Secondary outcome measures

- Proportion (n, %) of SCAR treated with a potentially disease-modifying therapy
 - Proportions (n, %) for each treatment type e.g. topical or systemic corticosteroids, intravenous immunoglobulin (IVIG), immunomodulators (e.g. rituximab), antivirals (e.g. ganciclovir)
 - For each treatment type: Length-of-stay (days), inpatient mortality, all-cause mortality (90-day, 12-months), disease recurrence
- Proportion (n, %) of SCAR referred for *in vivo*/*ex vivo* allergy testing
 - Proportions (n, %) of each testing modality – patch testing, intradermal testing, *ex vivo* (LTT, ELISpot, other)
 - Proportion (n, %) positive on skin testing
- For each SCAR phenotype: Proportion (n, %) associated with inpatient and 12-month mortality
- For each SCAR phenotype: Proportion (n, %) associated with relapse or drug re-exposure within 12 months
- Risk factors associated with development of each SCAR phenotype
 - Patient (host factors), drug (pharmacological class), clinical (disease factors)
- Risk factors associated with SCAR mortality
 - Patient (host factors), drug (pharmacological class), disease (phenotype)
- For each SCAR phenotype and implicated drug: Genomic associations within HLA class I and/or II
- Utility of *in vitro*/*ex vivo* diagnostics in assigning drug causality in SCAR
- The long-term sequelae of SCAR

Sample size

Due to the registry study design, a sample size calculation is not required. The projected recruitment number over a 5-year period is 500 (80 cases are estimated over 5 years at a single institution (3) - allowing for 35% minimum case capture at 20 sites, the extrapolated numbers are 560 over this period).

Statistical analysis

Statistical analysis using Stata™ (StataCorp, Texas) will be performed by study investigators with the assistance of a biostatistician as required. Categorical variables will be summarized using frequency and percentage and compared using a chi-square test or Fisher's exact test. Continuous variables will first be assessed for significant skew using a Shapiro-Wilk test. They will then be summarized using mean and standard deviation (SD) or median and inter-quartile range as appropriate and compared using a t-test or Wilcoxon signed-rank / Mann-Whitney U test. Multivariable logistic regression modelling will be utilized to examine secondary objectives related to variables/factors predicting specified outcomes.

ETHICS AND DISSEMINATION

This study was registered on the Australian New Zealand Clinical Trials Registry (ANZCTR) on 19th February 2019 (Trial ID ACTRN12619000241134) and received ethical approval from the Austin Health Human Research Ethics Committee (HREC Number HREC/50791/Austin-19) in May 2019.

An initial publication of pilot data is planned after the recruitment of 100 patients. Patient demographics, SCAR phenotype, implicated drugs, ELISpot and HLA results will be included. Principal investigators from each participating site will be included as authors. Authorship will be guided by the Project Steering Committee with reference to the International Committee of Medical Journal Editors guidelines.

Further results of this research project are planned to be published and/or presented in a variety of scientific forums and journals. The data presented will explore SCAR epidemiology in Australasia, drug causality, genomic predictors, diagnostic tools and potential treatments.

Authors' contributions

FJ is the first author and coordinator of the study. JAT is the senior author and guarantor, providing overarching responsibility for project governance. MSYG, EJP, AKA, JY, CHK, HC and DG all contributed to the initial design of the study and writing of the protocol. EM, FJ, SV, KC, NEH, AA, WT, JDL, CZ, AD, JK, FT, SB, WS, AC, TA, AL, JB and LM contributed to substantial revisions of the manuscript. All authors have read and approved the final manuscript.

Funding statement

This research was funded by the Allergy and Immunology Foundation of Australasia (AIFA) and the Faculty of Medicine, Dentistry and Health Sciences, The University of Melbourne.

Competing interests

None to declare.

Word count: 2675

REFERENCES

1. Konvinse KC, Phillips EJ, White KD, Trubiano JA. Old dog begging for new tricks: current practices and future directions in the diagnosis of delayed antimicrobial hypersensitivity. *Current opinion in infectious diseases*. 2016 Dec;29(6):561-76. PubMed PMID: 27753687. PMCID: PMC5113146.
2. Duong TA, Valeyrie-Allanore L, Wolkenstein P, Chosidow O. Severe cutaneous adverse reactions to drugs. *Lancet (London, England)*. 2017;390(10106):1996-2011. PubMed PMID: Medline:28476287. English.
3. Trubiano JA, Aung AK, Nguyen M, Fehily SR, Graudins L, Cleland H, et al. A Comparative Analysis Between Antibiotic- and Nonantibiotic-Associated Delayed Cutaneous Adverse Drug Reactions. *The journal of allergy and clinical immunology In practice*. 2016 Nov - Dec;4(6):1187-93. PubMed PMID: 27283055.
4. Saka B, Barro-Traore F, Atadokpede FA, Kobangue L, Niamba PA, Adegbedi H, et al. Stevens-Johnson syndrome and toxic epidermal necrolysis in sub-Saharan Africa: a multicentric study in four countries. *International journal of dermatology*. 2013 May;52(5):575-9. PubMed PMID: 23330601. Epub 2013/01/22. eng.
5. Lin YF, Yang CH, Sindy H, Lin JY, Rosaline Hui CY, Tsai YC, et al. Severe cutaneous adverse reactions related to systemic antibiotics. *Clinical infectious diseases : an official publication of the Infectious Diseases Society of America*. 2014 May;58(10):1377-85. PubMed PMID: 24599767.
6. Su P, Aw CW. Severe cutaneous adverse reactions in a local hospital setting: a 5-year retrospective study. *International journal of dermatology*. 2014 Nov;53(11):1339-45. PubMed PMID: 25070588. Epub 2014/07/30. eng.
7. Kardaun SH, Sekula P, Valeyrie-Allanore L, Liss Y, Chu CY, Creamer D, et al. Drug reaction with eosinophilia and systemic symptoms (DRESS): an original multisystem adverse drug reaction. Results from the prospective RegiSCAR study. *The British journal of dermatology*. 2013 Nov;169(5):1071-80. PubMed PMID: 23855313. Epub 2013/07/17. eng.
8. Rive CM, Bourke J, Phillips EJ. Testing for drug hypersensitivity syndromes. *The Clinical biochemist Reviews / Australian Association of Clinical Biochemists*. 2013 Feb;34(1):15-38. PubMed PMID: 23592889. PMCID: 3626363.
9. Blumenthal KG, Peter JG, Trubiano JA, Phillips EJ. Antibiotic allergy. *Lancet*. 2019 Jan 12;393(10167):183-98. PubMed PMID: 30558872.
10. Phillips EJ, Bigliardi P, Bircher AJ, Broyles A, Chang YS, Chung WH, et al. Controversies in drug allergy: Testing for delayed reactions. *The Journal of allergy and clinical immunology*. 2019 Jan;143(1):66-73. PubMed PMID: 30573342.
11. Trubiano JA, Douglas AP, Goh M, Slavin MA, Phillips EJ. The safety of antibiotic skin testing in severe T-cell-mediated hypersensitivity of immunocompetent and immunocompromised hosts. *The journal of allergy and clinical immunology In practice*. 2019 Apr;7(4):1341-3 e1. PubMed PMID: 30266590. PMCID: PMC6435428.
12. Trubiano JA, Strautins K, Redwood AJ, Pavlos R, Konvinse KC, Aung AK, et al. The Combined Utility of Ex Vivo IFN-gamma Release Enzyme-Linked ImmunoSpot Assay and In Vivo Skin Testing in Patients with Antibiotic-Associated Severe Cutaneous Adverse Reactions. *The journal of allergy and clinical immunology In practice*. 2018 Jul - Aug;6(4):1287-96 e1. PubMed PMID: 29100867. PMCID: PMC5930120.
13. White KD, Abe R, Ardern-Jones M, Beachkofsky T, Bouchard C, Carleton B, et al. SJS/TEN 2017: Building Multidisciplinary Networks to Drive Science and Translation. *The journal of allergy and clinical immunology In practice*. 2018 Jan - Feb;6(1):38-69. PubMed PMID: 29310768.
14. Mallal S, Phillips E, Carosi G, Molina JM, Workman C, Tomazic J, et al. HLA-B*5701 screening for hypersensitivity to abacavir. *The New England journal of medicine*. 2008 Feb 7;358(6):568-79. PubMed PMID: 18256392. Epub 2008/02/08. eng.
15. Yun J, Marcaida MJ, Eriksson KK, Jamin H, Fontana S, Pichler WJ, et al. Oxypurinol directly and immediately activates the drug-specific T cells via the preferential use of HLA-B*58:01. *Journal of immunology*. 2014 Apr 1;192(7):2984-93. PubMed PMID: 24591375.

16. Kano Y, Hirahara K, Mitsuyama Y, Takahashi R, Shiohara T. Utility of the lymphocyte transformation test in the diagnosis of drug sensitivity: dependence on its timing and the type of drug eruption. *Allergy*. 2007 Dec;62(12):1439-44. PubMed PMID: 17983378.
17. Porebski G. In Vitro Assays in Severe Cutaneous Adverse Drug Reactions: Are They Still Research Tools or Diagnostic Tests Already? *International journal of molecular sciences*. 2017 Aug 10;18(8). PubMed PMID: 28796198.
18. Redwood A, Trubiano J, Phillips EJ. Prevention and Diagnosis of Severe T-Cell-Mediated Adverse Drug Reactions: Are We There Yet? *The journal of allergy and clinical immunology In practice*. 2019 Jan;7(1):228-30. PubMed PMID: 30598178.
19. Klaewsongkram J, Sukasem C, Thantiworasit P, Suthumchai N, Rerknimitr P, Tuchinda P, et al. Analysis of HLA-B Allelic Variation and IFN-gamma ELISpot Responses in Patients with Severe Cutaneous Adverse Reactions Associated with Drugs. *The journal of allergy and clinical immunology In practice*. 2019 Jan;7(1):219-27 e4. PubMed PMID: 29800753.
20. Pichler WJ. *Drug Hypersensitivity*: Karger Publishers; 2007.
21. Copaesu A, Mouhtouris E, Vogrin S, James F, Chua KYL, Holmes NE, et al. The Role of In Vivo and Ex Vivo Diagnostic Tools in Severe Delayed Immune-Mediated Adverse Antibiotic Drug Reactions. *The journal of allergy and clinical immunology In practice*. 2021 May;9(5):2010-5 e4. PubMed PMID: 33453452. Epub 2021/01/17.
22. Copaesu A, Gibson A, Li Y, Trubiano JA, Phillips EJ. An Updated Review of the Diagnostic Methods in Delayed Drug Hypersensitivity. *Front Pharmacol*. 2020;11:573573. PubMed PMID: 33597867. PMCID: PMC7883592. Epub 2021/02/19.
23. regiscar
24. Kang DY, Yun J, Lee SY, Koh YI, Sim DW, Kim S, et al. Korean Severe Cutaneous Adverse Reactions Consortium. A Nationwide Study of Severe Cutaneous Adverse Reactions Based on the Multicenter Registry in Korea. *J Allergy Clin Immunol Pract*. 2021 Feb;9(2):929-936.e7. doi: 10.1016/j.jaip.2020.09.011. Epub 2020 Sep 19. PMID: 32961314.
25. Kidney Disease: Improving Global Outcomes (KDIGO) Acute Kidney Injury Work Group. KDIGO clinical practice guideline for acute kidney injury. *Kidney Int*. 2012;2:1-138
26. Aithal GP, Watkins PB, Andrade RJ, Larrey D, Molokhia M, Takikawa H, et al. Case definition and phenotype standardization in drug-induced liver injury. *Clinical pharmacology and therapeutics*. 2011 Jun;89(6):806-15. PubMed PMID: 21544079.
27. Baiardini I, Braido F, Fassio O, Calia R, Giorgio WC, Romano A, et al. Development and validation of the Drug Hypersensitivity Quality of Life Questionnaire. *Annals of allergy, asthma & immunology : official publication of the American College of Allergy, Asthma, & Immunology*. 2011 Apr;106(4):330-5. PubMed PMID: 21457882.

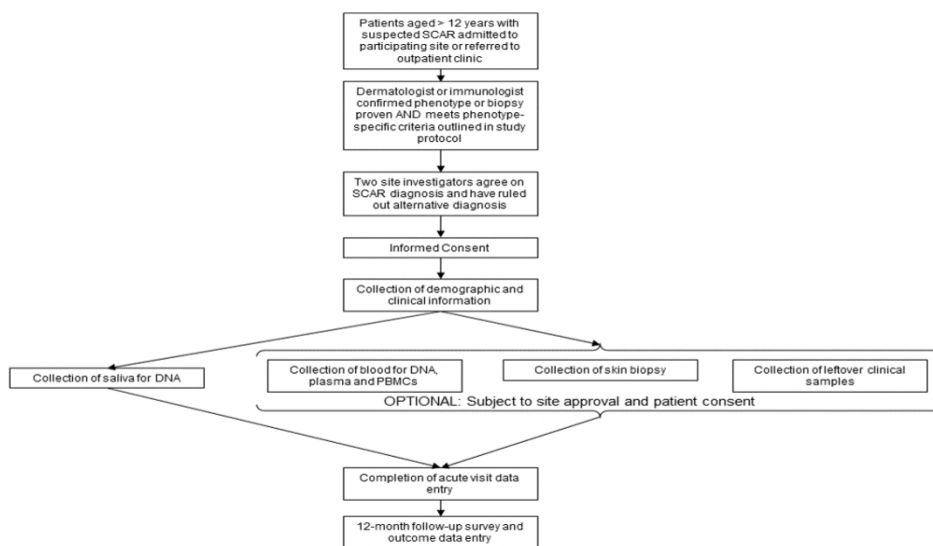


Figure 1. Overview of AUS-SCAR study design

523x381mm (59 x 48 DPI)

1
2
3
4
5
6
7
8
9
10
11
12
13
14
15
16
17
18
19
20
21
22
23
24
25
26
27
28
29
30
31
32
33
34
35
36
37
38
39
40
41
42
43
44
45
46
47
48
49
50
51
52
53
54
55
56
57
58
59
60

SUPPLEMENTARY MATERIALS

Supplementary Table 1. SCAR phenotype-specific criteria for Drug reaction with eosinophilia and systemic symptoms (DRESS). RegiSCAR scoring system (8, 22). Inclusion of cases with drug reaction with eosinophilia and systemic symptoms (DRESS) requires a RegiSCAR score of ≥ 4 and hospitalisation.

RegiSCAR Item		Present		Absent
Fever $\geq 38.5^{\circ}\text{C}$ (101.3°F)		0		-1
Enlarged lymph nodes (>1 cm size, at least two sites)		1		0
Eosinophilia: ≥ 700 or ≥ 10 percent (leucopenia)	≥ 1500 or ≥ 20 percent (leucopenia)	1	2	0
Atypical lymphocytes		1		0
Rash ≥ 50 percent of body surface area		1		0
Rash suggestive (≥ 2 of facial edema, purpura, infiltration, desquamation)		1		0
Skin biopsy suggesting alternative diagnosis		-1		0
Organ involvement: one	two or more	1	2	0
Disease duration >15 days		0		-2
Investigation for alternative cause (blood cultures, ANA, serology for Hepatitis viruses, mycoplasma, Chlamydia) ≥ 3 done and negative		1		0

Supplementary Table 2. SCAR phenotype-specific criteria for Acute generalized exanthematous pustulosis (AGEP). AGEP validation score, EuroSCAR group (23). Inclusion of cases with acute generalised exanthematous pustulosis (AGEP) requires an AGEP score of ≥ 5 .

Morphology	Score
Pustules	
Typical*	+2
Compatible**	+1
Insufficient***	0
Erythema	1
Typical*	
Compatible**	
Insufficient***	
Distribution/patter	1
Typical*	
Compatible**	
Insufficient***	
Post pustular desquamation	1
Yes	
No/insufficient	
Course	
Mucosal involvement	
Yes	-2
No	0
Acute onset (≤ 10 days)	
Yes	0
No	-2
Resolution	

Yes	0
No	-4
Fever ≥ 38	
Yes	+1
No	0
PMN $\geq 7000/\text{mm}^3$	
Yes	+1
No	0
Histology	
Other disease	-10
Not representative/no histology	0
Exocytosis of PMN	+1
Subcorneal and/or intraepidermal non-spongiform or NOS ¹ 2 pustule(s) with papillary oedema or subcorneal and/or intraepidermal spongiform or NOS pustule(s) without papillary oedema (NOS ¹ 2 not otherwise specified)	+2
Spongiform subcorneal and/or intraepidermal pustule(s) ¹ 3 with papillary edema	+3

Supplementary Table 3. Schedule of assessments during study period.

Schedule of Assessments			
Procedure	Visit	Timeline	Volume
Part 1: DNA	Acute admission / outpatient visit	Acute	Saliva sample or additional 9mls blood
Part 2: Blood draws	Acute or follow-up admission / outpatient visit	Acute / convalescent	$\leq 150\text{mls}$ blood (adults) OR $\leq 50\text{ml}$ (aged 12 – 18 years)
Part 2: Skin sample	Acute admission / outpatient visit	Acute / convalescent	3-4mm punch biopsy
Part 2: Blister fluid	Acute admission	Acute	Any amount
Part 2: Other relevant fluid samples (eg. CSF, urine, LN aspirate)	Acute or follow-up admission / outpatient visit	Acute / convalescent	Any amount
Part 3: Patient survey	Follow-up phone call / electronic mail-out	12 months post SCAR onset (convalescent)	N/A

Drug Hypersensitivity Quality of Life Questionnaire (DrHy-Q)

To be performed at 12 months post onset of rash. Assessment should be performed over the phone by a study investigator or via an online tool (REDCap) if they prefer.

If the patient doesn't speak English:

1. Prior to calling all patients, extract the data from the medical record as outlined above. During the medical record review, check Emergency Department presentation notes medical record to determine whether an interpreter was needed during any episodes.
 - a. If an interpreter was needed during the episode, the telephone interview should be undertaken with the assistance of an interpreter.
 - b. If an interpreter was not used during hospital episodes, but a family member was involved with the patient's care due to a language barrier, contact this person to determine whether a suitable time can be set up to invite the patient to participate.
2. If a potential language barrier is not identified in the episode notes, telephone the patient as outlined below. If during the telephone call, it is apparent that an interpreter is needed, attempt to explain to the patient that you will organise an interpreter to assist with the conversation or ask to speak with an English-speaking family member.
3. If a family member or professional telephone interpreter assists with the interview, note this on the data collection form and the scanned medical record.

Verbal consent script for patients discharged from hospital identified from AUS-SCAR database.

"Hello could I please speak to (patient's full given name and surname)?"

Hello, I am _____, a nurse or doctor at the _____ Hospital.

Before we proceed, can I please confirm your full name, your date of birth and address?

We are doing an audit to see how your health is following a recent episode of an adverse reaction you had to a medication and managed at _____ Hospital. If you agree to be involved, we will ask you some questions about yourself. Usually the interview takes about 10 minutes.

We initially obtained your consent to contact you for this survey and this will be your final involvement in the study.

If you would prefer we can email you a link to a safe online version of the questions for you to answer in your own time.

If patient is not home:

"Is there a time that I could call back to speak with (patient's name)?"

If the patient is busy:

"Is there another time that I could call back that would be convenient?"

Questions:

1. "Would you consider yourself allergic to any drugs?"
 - a. **If Yes** – "Could you please list them?"
2. "Did you have any allergy testing performed after your discharge from hospital"?
 - a. **If Yes** – "Do you know the results?"
3. "Did you receive a medical alert letter or card on discharge from the hospital"?
 - a. **If Yes** – "What is listed on this?"
4. "Have you had any recurrent rashes to drugs since discharge from hospital"?
 - a. **If Yes** – "Could you please list the drugs and describe the reactions"

Phenotype-specific questions

- 1
 - 2
 - 3
 - 4
 - 5
 - 6
 - 7
 - 8
 - 9
 - 10
 - 11
 - 12
 - 13
 - 14
 - 15
 - 16
 - 17
 - 18
 - 19
 - 20
 - 21
 - 22
 - 23
 - 24
 - 25
 - 26
 - 27
 - 28
 - 29
 - 30
 - 31
 - 32
 - 33
 - 34
 - 35
 - 36
 - 37
 - 38
 - 39
 - 40
 - 41
 - 42
 - 43
 - 44
 - 45
 - 46
 - 47
 - 48
 - 49
 - 50
 - 51
 - 52
 - 53
 - 54
 - 55
 - 56
 - 57
 - 58
 - 59
 - 60
5. **If antibiotic associated SCAR** - "Have you received any antibiotics since the antibiotic allergy testing was performed?" (if antibiotic associated SCAR)
- a. **If Yes** - "Could you tell me which antibiotics, what they were given for and if you had any reactions?"
 - b. **If Yes** - "Would you be happy with us contacting your general practitioner for these details?"
6. **If SJS or TEN** - "Do you have any ongoing issues with your eyes or vision?"
7. **If SJS or TEN** - "Do you have any ongoing issues of scarring or contractures?"
8. **If DRESS** - "Do you have any autoimmune problems since / after your reaction such as thyroid disease or diabetes"
- a. **If Yes** - "Diabetes" (Y/N), "Thyroid disease" (Y/N), "Lupus" (Y/N), "Other" (Y/N)

Drug Hypersensitivity Quality of Life Questionnaire (DrHy-Q) – as per previously published protocol (24) – Answer True or False

1. I would like an allergy doctor's opinion before taking drugs prescribed by other doctors
2. I feel different from others
3. Even a little discomfort is a problem for me
4. Since I am unable to take drugs every illness limits me more than other people
5. My allergy problems interfere with my sexual life
6. My family and partner are aware of my allergy problem
7. I am afraid of being administered a drug during an emergency to which I am allergic
8. For each infection I would be confident that there is a drug that I can take safely
9. I feel anxious due to my allergy reaction
10. I worry every time I take a drug different from ones that cause my allergic reactions
11. The idea of taking a medicine makes me feel anxious
12. My family doctor is aware of my adverse drug reaction
13. Experiencing an adverse reaction to drugs affects my life
14. I feel anguished due to my problem of allergy reaction
15. I am afraid I could not deal with the pain
16. I've given up leisure activities (sport, vacations, trips) because of my problem
17. I'm in a bad mood due to my problem of allergy reaction

STROBE Statement—Checklist of items that should be included in reports of *cohort studies*

	Item No	Recommendation	Page No
Title and abstract	1	(a) Indicate the study's design with a commonly used term in the title or the abstract	1
		(b) Provide in the abstract an informative and balanced summary of what was done and what was found	2
Introduction			
Background/rationale	2	Explain the scientific background and rationale for the investigation being reported	2,3
Objectives	3	State specific objectives, including any prespecified hypotheses	3
Methods			
Study design	4	Present key elements of study design early in the paper	3
Setting	5	Describe the setting, locations, and relevant dates, including periods of recruitment, exposure, follow-up, and data collection	3-6
Participants	6	(a) Give the eligibility criteria, and the sources and methods of selection of participants. Describe methods of follow-up	3-6
		(b) For matched studies, give matching criteria and number of exposed and unexposed	NA
Variables	7	Clearly define all outcomes, exposures, predictors, potential confounders, and effect modifiers. Give diagnostic criteria, if applicable	7,11-12
Data sources/measurement	8*	For each variable of interest, give sources of data and details of methods of assessment (measurement). Describe comparability of assessment methods if there is more than one group	4-8
Bias	9	Describe any efforts to address potential sources of bias	2
Study size	10	Explain how the study size was arrived at	7
Quantitative variables	11	Explain how quantitative variables were handled in the analyses. If applicable, describe which groupings were chosen and why	7
Statistical methods	12	(a) Describe all statistical methods, including those used to control for confounding	7
		(b) Describe any methods used to examine subgroups and interactions	NA
		(c) Explain how missing data were addressed	NA
		(d) If applicable, explain how loss to follow-up was addressed	NA
		(e) Describe any sensitivity analyses	NA
Results			
Participants	13*	(a) Report numbers of individuals at each stage of study—eg numbers potentially eligible, examined for eligibility, confirmed eligible, included in the study, completing follow-up, and analysed	NA
		(b) Give reasons for non-participation at each stage	NA
		(c) Consider use of a flow diagram	NA
Descriptive data	14*	(a) Give characteristics of study participants (eg demographic, clinical, social) and information on exposures and potential confounders	NA
		(b) Indicate number of participants with missing data for each variable of interest	NA
		(c) Summarise follow-up time (eg, average and total amount)	NA
Outcome data	15*	Report numbers of outcome events or summary measures over time	NA

1	Main results	16	(a) Give unadjusted estimates and, if applicable, confounder-adjusted estimates and their precision (eg, 95% confidence interval). Make clear which confounders were adjusted for and why they were included	NA
2			(b) Report category boundaries when continuous variables were categorized	NA
3			(c) If relevant, consider translating estimates of relative risk into absolute risk for a meaningful time period	NA
4				
5				
6				
7				
8				
9	Other analyses	17	Report other analyses done—eg analyses of subgroups and interactions, and sensitivity analyses	NA
10				
11	Discussion			
12				
13	Key results	18	Summarise key results with reference to study objectives	NA
14	Limitations	19	Discuss limitations of the study, taking into account sources of potential bias or imprecision. Discuss both direction and magnitude of any potential bias	NA
15				
16	Interpretation	20	Give a cautious overall interpretation of results considering objectives, limitations, multiplicity of analyses, results from similar studies, and other relevant evidence	NA
17				
18				
19	Generalisability	21	Discuss the generalisability (external validity) of the study results	NA
20				
21	Other information			
22	Funding	22	Give the source of funding and the role of the funders for the present study and, if applicable, for the original study on which the present article is based	8
23				
24				
25				

*Give information separately for exposed and unexposed groups.

Note: An Explanation and Elaboration article discusses each checklist item and gives methodological background and published examples of transparent reporting. The STROBE checklist is best used in conjunction with this article (freely available on the Web sites of PLoS Medicine at <http://www.plosmedicine.org/>, Annals of Internal Medicine at <http://www.annals.org/>, and Epidemiology at <http://www.epidem.com/>). Information on the STROBE Initiative is available at <http://www.strobe-statement.org>.

Study Protocol: Australasian registry of Severe Cutaneous Adverse Reactions (AUS-SCAR)

Journal:	<i>BMJ Open</i>
Manuscript ID	bmjopen-2021-055906.R1
Article Type:	Protocol
Date Submitted by the Author:	22-Feb-2022
Complete List of Authors:	<p>James, Fiona; Austin Health, Centre for Antibiotic Allergy & Research, Department of Infectious Diseases Goh, Michelle S Y; St Vincent's Hospital Melbourne Pty Ltd, Department of Dermatology; Alfred Health, Department of Dermatology Mouhtouris, Effie; Austin Health, Centre for Antibiotic Allergy & Research, Department of Infectious Diseases Vogrin, Sara; The University of Melbourne, Department of Medicine Chua, Kyra; Austin Health, Centre for Antibiotic Allergy & Research, Department of Infectious Diseases Holmes, NE ; Austin Health, Centre for Antibiotic Allergy & Research, Department of Infectious Diseases Awad, Andrew; Austin Health, Centre for Antibiotic Allergy & Research, Department of Infectious Diseases Copaescu, Ana-Maria; Austin Health, Centre for Antibiotic Allergy & Research, Department of Infectious Diseases De Luca, Joseph; Austin Health, Centre for Antibiotic Allergy and Research, Department of Infectious Diseases Zubrinich, Celia; Alfred Health, Allergy, Asthma & Clinical Immunology; Monash University, School of Public Health and Preventive Medicine Gin, Douglas; Alfred Hospital, Department of Dermatology Cleland, H ; Alfred Hospital, Victorian Adult Burns Service Douglas, Abby; Peter MacCallum Cancer Centre, Infectious Diseases and Infection Control Kern, Johannes; The Royal Melbourne Hospital, Dermatology Department Katelaris, Constance; Campbelltown Hospital, Allergy / Clinical Immunology Thien, Francis ; Monash University, Eastern Health Clinical School; Eastern Health, Department of Respiratory and Sleep Medicine Barnes, Sara; Monash Health, Department of Allergy/Immunology Yun, James; Nepean Hospital, Immunology and Rheumatology Tong, Winnie; St Vincent's Hospital Sydney, HIV & Immunology Smith, William; Royal Adelaide Hospital, Clinical Immunology and Allergy Carr, Andrew; St Vincent's Hospital Sydney, Immunology Anderson, Tara; Royal Hobart Hospital, Department of Infectious Diseases Legg, Amy; Royal Darwin Hospital, Pharmacy Department Bourke, Jack; Fiona Stanley Hospital, Department of Allergy and Immunology Mackay, Laura; The University of Melbourne, Department of Microbiology and Immunology Aung, Ar Kar; Alfred Hospital, Department of General Medicine</p>

	Phillips, Elizabeth; Murdoch University, Institute for Immunology and Infectious Diseases; Vanderbilt University Medical Center, Department of Infectious Diseases Trubiano, Jason ; Austin Health, Centre for Antibiotic Allergy & Research, Infectious Diseases; Peter MacCallum Cancer Centre, National Centre for Infections in Cancer
Primary Subject Heading:	Immunology (including allergy)
Secondary Subject Heading:	Epidemiology
Keywords:	IMMUNOLOGY, Adverse events < THERAPEUTICS, EPIDEMIOLOGY, PREVENTIVE MEDICINE, CLINICAL PHARMACOLOGY, Dermatological epidemiology < DERMATOLOGY

SCHOLARONE™
Manuscripts

1
2
3
4
5
6
7
8
9
10
11
12
13
14
15
16
17
18
19
20
21
22
23
24
25
26
27
28
29
30
31
32
33
34
35
36
37
38
39
40
41
42
43
44
45
46
47
48
49
50
51
52
53
54
55
56
57
58
59
60

Study Protocol: Australasian registry of Severe Cutaneous Adverse Reactions (AUS-SCAR)

Fiona James¹, Michelle S Y Goh^{2,10}, Effie Mouhtouris¹, Sara Vogrin³, Kyra Chua^{1,5}, Natasha Holmes^{1,5}, Andrew Awad¹, Ana Copaescu^{1,4}, Joseph De Luca^{1,5}, Celia Zubrinich^{7,8}, Douglas Gin¹⁰, Heather Cleland⁹, Abby Douglas^{11,25}, Johannes Kern¹², Connie Katelaris¹³, Francis Thien¹⁴, Sara Barnes¹⁵, James Yun¹⁶, Winnie Tong¹⁷, William Smith¹⁸, Andrew Carr¹⁷, Tara Anderson¹⁹, Amy Legg²¹, Jack Bourke²⁰, Laura Mackay²², Ar Kar Aung⁶, Elizabeth Phillips^{23,24}, Jason Trubiano^{1,25}

1. Centre for Antibiotic Allergy and Research, Department of Infectious Diseases, Austin Health, Heidelberg, Victoria, Australia
2. Department of Dermatology, St Vincent's Hospital, Fitzroy, Victoria, Australia
3. Department of Medicine, St Vincent's Hospital, University of Melbourne, Fitzroy, Australia
4. Department of Infection and Immunity, McGill University Health Centre, Montreal, Canada
5. Department of Medicine (Austin Health), The University of Melbourne, Heidelberg, Victoria, Australia
6. Department of General Medicine, Alfred Hospital, Melbourne, Victoria, Australia
7. Department of Allergy, Immunology & Respiratory Medicine (AIRmed), Alfred Hospital, Melbourne, Australia
8. School of Public Health and Preventive Medicine, Monash University, Melbourne, Victoria, Australia
9. Victorian Adult Burns Service, Alfred Hospital, Melbourne, Victoria, Australia
10. Department of Dermatology, Alfred Health, Melbourne, Victoria, Australia
11. Department of Infectious Diseases and Infection Prevention, Peter MacCallum Cancer Centre, The University of Melbourne, Parkville, VIC, Australia
12. Dermatology Department, The Royal Melbourne Hospital, Parkville, Victoria, Australia
13. Immunology & Allergy Unit, Campbelltown Hospital, New South Wales, Australia
14. Respiratory Medicine, Eastern Health, Box Hill and Monash University, Melbourne, VIC, Australia
15. Department of Allergy/Immunology, Monash Health, Melbourne, VIC, Australia
16. Immunology and Rheumatology, Nepean Hospital, Sydney, NSW, Australia
17. HIV & Immunology Department, St Vincent's Hospital Sydney, UNSW Sydney, New South Wales, Australia
18. Immunology and Allergy Department, Royal Adelaide Hospital, Adelaide, Australia
19. Department of Infectious Diseases, Royal Hobart Hospital, Hobart, TAS, Australia
20. Department of Allergy and Immunology, Fiona Stanley Hospital, Murdoch, Australia
21. Pharmacy Department, Royal Darwin Hospital, Tiwi, NT, Australia
22. Department of Microbiology and Immunology, University of Melbourne, Melbourne, Victoria, Australia
23. Institute for Immunology and Infectious Diseases, Murdoch University, Murdoch, Western Australia, Australia
24. Department of Infectious Diseases, Vanderbilt University Medical Centre, Nashville, Tennessee, USA.
25. The National Centre for Infections in Cancer, Peter MacCallum Cancer Centre, Melbourne, Victoria, Australia

Protocol Version: 8

Corresponding Author:

Fiona James
 Centre for Antibiotic Allergy and Research
 Department of Infectious Diseases, Austin Health
 145 Studley Road, Heidelberg VIC 3121
 AUSTRALIA
 Fiona.james@austin.org.au

Trial Sponsor:

A/Prof Jason Trubiano
 Centre for Antibiotic Allergy and Research
 Department of Infectious Diseases, Austin Health
 145 Studley Road, Heidelberg VIC 3121
 AUSTRALIA

Abstract

Introduction Severe cutaneous adverse reactions (SCAR) are a group of T cell-mediated hypersensitivities associated with significant morbidity, mortality and hospital costs¹. Clinical phenotypes include Stevens-Johnson Syndrome (SJS), toxic epidermal necrolysis (TEN), drug

1
2
3 reaction with eosinophilia and systemic symptoms (DRESS) and acute generalised exanthematous
4 pustulosis (AGEP). In this Australasian, multi-centre, prospective registry, we plan to examine the
5 clinical presentation, drug causality, genomic predictors, potential diagnostic approaches, treatments
6 and long-term outcomes of SCAR in Australia and New Zealand.
7

8
9 **Methods and analysis** Adult and adolescent patients with SCAR including SJS, TEN, DRESS,
10 AGEP and another T cell-mediated hypersensitivity, generalised bullous fixed drug eruption
11 (GBFDE), will be prospectively recruited. A waiver of consent has been granted for some sites to
12 retrospectively include cases which result in early mortality. DNA will be collected for all prospective
13 cases. Blood, blister fluid and skin biopsy sampling is optional and subject to patient consent and site
14 capacity. To develop culprit drug identification and prevention, genomic testing will be performed to
15 confirm HLA type and ex vivo testing will be performed via IFN- γ release ELISpot assay using
16 collected peripheral blood mononuclear cells (PBMCs). The long term outcomes of SCAR will be
17 investigated with a 12-month quality of life survey and examination of prescribing and mortality data.
18
19

20
21 **Ethics and dissemination** This study was reviewed and approved by the Austin Health Human
22 Research Ethics Committee (HREC/50791/Austin-19). Results will be published in peer-reviewed
23 journals and presented at relevant conferences.
24

25 **Registration Number:** ACTRN12619000241134
26

27 **Strengths and limitations of the study**

28

- 29 • The strength of AUS-SCAR lies in its prospective design, allowing for the real-time
30 collection of clinical data, standardised investigation and sampling for genomic evaluation
31 and ex-vivo diagnostics.
- 32 • There will likely be selection bias favouring the recruitment of adults, less critically ill
33 patients, patients living in metropolitan areas where the majority of study sites are located and
34 patients whose first language is English.
- 35 • A limitation of the sampling strategy is the large blood volume required due to the number of
36 PBMCs required for successful ELISpot assay, complicated by the often poor viability of
37 cells from acute bleeds due to critical illness. Many hospital-adjacent laboratories are also not
38 set up to process PBMCs, blister fluid or skin specimens requiring same-day transport to
39 specialised research labs.
- 40 • Selection bias is also likely to affect the sampling strategy as treating teams may be less
41 willing to overburden children and critically ill patients.
- 42 • Finally, the registry is not designed to achieve complete case capture across the study period
43 and recruiting the target sample size will be dependent on successful recognition of cases at
44 each site.
45
46
47
48
49
50

51 **INTRODUCTION**

52

53 SCAR are a group of T cell-mediated hypersensitivities – including Stevens-Johnson Syndrome (SJS),
54 toxic epidermal necrolysis (TEN), drug reaction with eosinophilia and systemic symptoms (DRESS)
55 and acute generalized exanthematous pustulosis (AGEP) (1). Other severe T cell-mediated
56 hypersensitivities include diseases such as generalized bullous fixed drug eruption (GBFDE), drug-
57 induced liver injury (DILI) and acute interstitial nephritis (AIN) (1, 2). SCAR can be associated with
58 significant morbidity, hospital costs, increased demand for specialist testing and high mortality (3-6).
59
60

1
2
3 Despite this, an understanding of the clinical, genomic and pharmacological predictors of each
4 phenotype remains absent from current practice. Further, there is currently a lack of consistency
5 among the recommendations in treatment guidelines for these severe reactions.
6

7 Causality assessment in SCAR is often complex as multiple drugs are frequently involved (3, 7-9).
8 Whilst the use of skin testing (*in vivo*) has been increasingly employed, it is hampered by low
9 sensitivity and concerns around safety (10-12). Progress has been made in understanding the
10 underlying immune mechanisms and genetic predisposition of SCAR (13), providing strong support
11 for the role of HLA typing in identifying specific drug-associated reactions (e.g. HLA-B*57:01 for
12 abacavir hypersensitivity, HLA-B*58:01 for allopurinol hypersensitivity) (14, 15). Further association
13 studies are required, however, to capitalise on this knowledge and previously provided roadmap. The
14 use of novel *ex vivo* T-cell diagnostics to aid drug causality assessment, including lymphocyte
15 transformation testing (LTT) and IFN- γ Enzyme Linked ImmunoSpot (ELISpot) Assay, has been
16 utilized with some success in a research setting but their clinical utility is not yet established (12, 16-
17 22).
18
19

20 The long-term outcomes of SCAR including quality of life, disease recurrence, inadvertent drug re-
21 exposure and medication safety are not well-described. The development of a regional clinical and
22 DNA registry of SCAR will allow investigators to (i) perform surveillance for new and emerging drug
23 causality, (ii) develop causality and phenotypic prediction rules, (iii) understand best-practice
24 treatment approaches, (iv) discover genomic predictors that prevent SCAR onset and (v) improve
25 long-term outcomes and medication safety. The additional biospecimen component of the study will
26 allow investigators to assess the utility of T-cell diagnostics in aiding drug causality. While national
27 SCAR registries have been set up successfully in Europe (RegiSCAR) and Korea (KoSCAR) (23-24),
28 AUS-SCAR will be the first registry of severe drug allergy in the Australasian region.
29
30
31
32

33 **METHODS AND ANALYSIS**

34
35 AUS-SCAR is an Australasian, multicentre, prospective registry of severe cutaneous adverse
36 reactions in adults and adolescents > 12 years of age. Participating sites for recruitment include Austin
37 Health, Alfred Health, Eastern Health, Peter MacCallum Cancer Centre, St Vincent's Hospital
38 Melbourne, Monash Health, Royal Melbourne Hospital, Epworth Healthcare, Campbelltown Hospital,
39 Nepean Hospital, St Vincent's Hospital Sydney, Fiona Stanley Hospital, Sir Charles Gairdner
40 Hospital, Royal Brisbane and Women's Hospital, Queensland Children's Hospital, Royal Adelaide
41 Hospital, Flinders Medical Centre, Royal Darwin Hospital, Launceston General Hospital and
42 Auckland City Hospital. The Peter Doherty Institute for Infection and Immunity and Institute for
43 Immunology and Infectious Diseases (IIID) are collaborating sites for sample analysis. Recruitment
44 commenced in July 2019 and is planned to continue across all sites until accrual has reached $n = 500$.
45
46
47

48 **Study Oversight**

49 A 5-7 person steering committee will be formed following nominations from participating site
50 principal investigators. Steering Committee members will meet regularly to discuss the direction of
51 the project, assess requests from investigators and identify any potential risks or issues. The chair of
52 the Steering Committee will be the Chief Investigator. A Steering Committee member can step down
53 from this role at any time and nominations for a new member will be sought from participating site
54 principal investigators. The Steering Committee should have at least one of the following at all times:
55 infectious diseases physician, allergist/immunologist and dermatologist.
56
57

58 The clinical and DNA database and results of the study are the common property of AUS-SCAR
59 investigators and cannot be utilised without the formal authorization of the Steering Committee. The
60

1
2
3 release of results at conference proceedings, meetings and/or in publication are decided upon by the
4 Steering Committee of AUS-SCAR.
5
6

7 **Project development**

8 Any principal investigator can propose a project utilizing AUS-SCAR data. This proposal will be
9 forwarded to all investigators for comment and the Steering Committee will provide (i) feedback to
10 the proposing investigator and (ii) approval/non-approval of the project.
11
12

13 **Patient Involvement**

14
15
16 Although they have not been involved in the study design, patients will be invited to assist with
17 identifying the best methods of disseminating results to patients and the public following publication.
18 Patients or consumer representatives may also be considered for inclusion in the Steering Committee.
19

20 **Figure 1. Overview of AUS-SCAR study design (adapted from Eldridge et al., 2010)²⁸**

21 **Participants**

22
23
24 Patients will be invited to participate in the registry if 1) they are admitted to or referred to a
25 participating site with a suspected SCAR, 2) two site investigators have agreed on inclusion, 3) SCAR
26 is confirmed by a site dermatologist or immunologist or is biopsy proven and 4) the SCAR phenotype
27 is consistent with disease-specific criteria and alternative diagnoses have been ruled out. Disease-
28 specific criteria for SJS/TEN includes the presence of widespread erythema with skin detachment and
29 more than 1 blister. For GBFDE, there must be multifocal, widespread, bullous-type fixed drug
30 eruption characterised by sharply defined bullae at site of recurrent drug administration. Criteria for
31 DRESS and AGEP are outlined in **Supplementary Tables 1 and 2**, respectively. The study design
32 and biospecimen sampling schedule are outlined in **Figure 1**.
33
34
35

36 At a later stage of the project, extended recruitment may include the following phenotypes, following
37 approval by > 50% of principal investigators and the Project Steering Committee:
38

- 39 a. **AIN** – Required hospitalization and biopsy proven with acute kidney injury (increase in
40 serum creatinine by ≥ 0.3 mg/dl within 48 hours or increase in serum creatinine to ≥ 1.5
41 times baseline within 7 days or urine output < 0.5 ml/kg/h for 6 hours) (25) with other
42 common causes excluded. Non-biopsy proven cases with a single implicated drug, urinary
43 and peripheral eosinophilia, acute kidney injury and resolution of renal disease post drug
44 removal can be included.
45
- 46 b. **DILI** – Required hospitalization and biopsy proven with $\geq 5x$ upper limit of normal (ULN)
47 for ALT or ≥ 2 ULN for ALP, or ≥ 3 ULN for ALT with bilirubin ≥ 2 ULN (26). Non-
48 biopsy proven cases with a single implicated drug, acute liver injury, autoimmune and other
49 causes excluded and resolution of liver disease post drug removal can be included.
50
- 51 c. **FDE** – Dermatologist confirmed, well-defined, circular, hyper-pigmented single or a few
52 plaques that recur in fixed locations upon ingestion of drug (therefore requires 2 or more
53 occurrences).
54
55

56 **Biospecimen Collection and Analysis**

57 **Part 1. Clinical data and DNA collection**

1
2
3 Following informed consent, baseline patient demographics, medical history and clinical data including
4 histopathology and clinical photography will be collected from the patient and medical record and
5 entered into a secure REDCap database. Consent may be obtained from the patient, parent/guardian or
6 medical treatment decision-maker, as appropriate and subject to local or national law. A waiver of
7 consent has been obtained for some participating institutions to collect clinical data retrospectively for
8 patients that die prior to obtaining informed consent.
9

10 DNA will be collected for all patients enrolled prospectively: this will be extracted from saliva for
11 patients who do not consent to additional sample collection or from whole blood or peripheral blood
12 mononuclear cells (PBMCs) for patients who agree to additional blood collection. Genomic testing will
13 be performed at the Institute for Immunology and Infectious Diseases (IID), Murdoch University,
14 Perth, Western Australia for HLA-A, HLA-B, HLA-C, DR/DQ/DP. Four-digit typing is performed on
15 extracted DNA using the 454 FLX platform. Specific HLA loci are PCR-amplified using sample
16 specific MID-tagged primers that amplify polymorphic exons from Class I (A, B, C Exons 2 and 3) and
17 Class II (DQ, Exons 2 and 3; DRB and DPB1, Exon 1) MHC genes. Amplified DNA products from
18 unique MID-tagged products (up to 48 MIDs) are then pooled in equimolar ratios and subjected to
19 library preparation, quantitation and emulsion PCR suitable for entry into the 454 FLX sequencing
20 pipeline. Clonally enriched beads are used for 454 Titanium chemistry based sequencing on the 454
21 FLX+ sequencer. Sequences are then separated by MID tags and alleles called using an in house
22 accredited HLA allele caller software pipeline using the latest IMGT HLA allele database as the allele
23 reference library. Further Genome Wide Association Studies (GWAS), RNA-seq and virologic
24 assessment may be performed on stored DNA samples to determine if genetic and viral variants are
25 associated with SCAR phenotype.
26
27
28
29
30
31

32 **Part 2. Additional biospecimen collection**

33 This part of the study is optional for participating sites and for patients. Samples will need to be stored
34 at the participating site or at a collaborating AUS-SCAR site if there is capacity. Informed consent must
35 be obtained for all samples requested. The sampling schedule is outlined below and in **Supplementary**
36 **Table 3**.
37
38
39

40 **Blood**

41 For adults, an initial blood sample of 100 - 150 ml will be taken following informed consent. A reduced
42 blood volume of 20 – 50 ml is taken for patients under 18 years of age. A convalescent follow-up blood
43 draw of the same volume will be taken at 12 months post-SCAR onset for consenting patients. Repeat
44 blood draws may be requested at both time points if the full volume was unable to be collected or cell
45 viability is poor, subject to ongoing patient consent.
46
47
48
49

50 **Skin biopsy**

51 A 3-4mm punch biopsy may be taken from an affected area at the acute stage and 12 months post-
52 SCAR onset. For a subset of patients, repeat biopsies may be requested for comparison studies.
53
54

55 **Blister fluid**

56 For patients with blisters present, blister fluid of any volume may be collected into a heparinised tube
57 for the extraction of PBMCs. For patients whose blisters reform, additional fluid collection may be
58 requested.
59
60

Additional clinical samples

Additional clinical samples may be collected if considered to be of potential clinical relevance by the site investigator (e.g. cerebrospinal fluid, lymph node aspirate).

Sample processing

Samples are to be processed and stored at participating sites (or a collaborating AUS-SCAR site on request from participating site) and cannot be used in AUS-SCAR studies without written approval from the participating site. The participating site can choose to utilize these samples for any research project they have additional local ethics approval for, without consent required from AUS-SCAR investigators. The Doherty Institute for Infection and Immunity or Institute for Immunology and Infectious Diseases are available for assistance with sample processing where possible.

Part 3. Patient follow up

A 12-month follow-up will be performed to collect data regarding (i) drug utilization, (ii) health outcomes and (iii) quality of life (**Supplementary Materials**). Mortality/morbidity and prescribing data will be extracted from the medical record. For available patients a quality of life assessment will be performed using the previously validated and adapted Drug Hypersensitivity Quality of Life Questionnaire (DrHy-Q) (27). A telephone script is provided with the DrHy-Q in Supplementary Materials. The questionnaire may also be sent out via email. Prescribing and mortality data may be obtained from PBS following approval or the participant's GP where not available from the medical record or patient.

Study Aims

1. To develop a national registry of SCAR to ensure continuous surveillance of new and emerging causative drugs and improve pharmacovigilance
2. To describe the causality and epidemiology of SCAR in Australasia
3. To determine patient, drug and clinical factors that predict SCAR phenotypes and which treatments improve outcomes
4. To determine the treatments employed for SCAR in Australasia and describe patient outcomes
5. To determine pharmacogenomic and genomic associations in SCAR.
6. To examine the long term impacts of SCAR including restricted medication use and QOL impact

Primary outcome measures

- Proportion (n, %) of SCAR secondary to antibiotics or non-antibiotics
 - Proportion (n, %) for each drug class

Secondary outcome measures

- Proportion (n, %) of SCAR treated with a potentially disease-modifying therapy

- Proportion (n, %) for each treatment type e.g. topical or systemic corticosteroids, intravenous immunoglobulin (IVIG), immunomodulators (e.g. rituximab), antivirals (e.g. ganciclovir)
- For each treatment type: Length-of-stay (days), inpatient mortality, all-cause mortality (90-day, 12-months), disease recurrence
- Proportion (n, %) of SCAR referred for *in vivo/ex vivo* allergy testing
 - Proportion (n, %) of each testing modality – patch testing, intradermal testing, *ex vivo* (LTT, ELISpot, other)
 - Proportion (n, %) positive on skin testing
- For each SCAR phenotype: Proportion (n, %) associated with inpatient and 12-month mortality
- For each SCAR phenotype: Proportion (n, %) associated with relapse or drug re-exposure within 12 months
- Risk factors associated with development of each SCAR phenotype
 - Patient (host factors), drug (pharmacological class), clinical (disease factors)
- Risk factors associated with SCAR mortality
 - Patient (host factors), drug (pharmacological class), disease (phenotype)
- For each SCAR phenotype and implicated drug: Genomic associations within HLA class I and/or II
- Utility of *in vitro/ex vivo* diagnostics in assigning drug causality in SCAR
- The long-term sequelae of SCAR

Sample size

Due to the registry study design, a sample size calculation is not required. The projected recruitment number over a 5-year period is 500 (80 cases are estimated over 5 years at a single institution (3) - allowing for 35% minimum case capture at 20 sites, the extrapolated numbers are 560 over this period).

Statistical analysis

Statistical analysis using Stata (StataCorp, Texas) will be performed by study investigators with the assistance of a biostatistician as required. Categorical variables will be summarized using frequency and percentage and compared using a chi-square test or Fisher's exact test. Continuous variables will first be assessed for significant skew using a Shapiro-Wilk test. They will then be summarized using mean and standard deviation (SD) or median and inter-quartile range as appropriate and compared using a t-test or Wilcoxon signed-rank / Mann-Whitney U test. Multivariable logistic regression modelling will be utilized to examine secondary objectives related to variables/factors predicting specified outcomes.

ETHICS AND DISSEMINATION

This study was registered on the Australian New Zealand Clinical Trials Registry (ANZCTR) on 19th February 2019 (Trial ID ACTRN12619000241134) and received ethical approval from the Austin Health Human Research Ethics Committee (HREC Number HREC/50791/Austin-19) in May 2019.

An initial publication of pilot data is planned after the recruitment of 100 patients. Patient demographics, SCAR phenotype, implicated drugs, ELISpot and HLA results will be included. Principal investigators

1
2
3 from each participating site will be included as authors. Authorship will be guided by the Project
4 Steering Committee with reference to the International Committee of Medical Journal Editors
5 guidelines.
6

7 Further results of this research project are planned to be published and/or presented in a variety of
8 scientific forums and journals. The data presented will explore SCAR epidemiology in Australasia, drug
9 causality, genomic predictors, diagnostic tools and potential treatments.
10
11
12
13

14 **Authors' contributions**

15
16 FJ is the Project Manager and Corresponding Author, responsible for providing central operational
17 oversight of the study. JT, EJP, JY, MSYG, WT, CZ, DG and CK contributed to the initial design of
18 the study and drafting of the protocol. FJ, MSYG, EM, SV, KC, NEH, AA, AMC, JFD, CZ, DG, HC,
19 AD, JK, CK, FT, SB, JY, WT, WS, AC, TA, AL, JB, LM, AKA, EJP and JT contributed to pilot data
20 acquisition informing the study design and substantial revision of the manuscript. JAT is the
21 Coordinating Principal Investigator, providing overall responsibility for the study. All authors have
22 read and approved the final manuscript.
23
24

25 **Funding statement**

26
27 This research was funded by the Allergy and Immunology Foundation of Australasia (AIFA) and the
28 Faculty of Medicine, Dentistry and Health Sciences, The University of Melbourne (Grant numbers not
29 applicable).
30

31 **Competing interests**

32
33 None to declare.
34
35

36 **Word count:** 2675
37
38
39
40
41
42
43
44
45
46
47
48
49
50
51
52
53
54
55
56
57
58
59
60

REFERENCES

1. Konvinse KC, Phillips EJ, White KD, Trubiano JA. Old dog begging for new tricks: current practices and future directions in the diagnosis of delayed antimicrobial hypersensitivity. *Current opinion in infectious diseases*. 2016 Dec;29(6):561-76. PubMed PMID: 27753687. PMCID: PMC5113146.
2. Duong TA, Valeyrie-Allanore L, Wolkenstein P, Chosidow O. Severe cutaneous adverse reactions to drugs. *Lancet (London, England)*. 2017;390(10106):1996-2011. PubMed PMID: Medline:28476287. English.
3. Trubiano JA, Aung AK, Nguyen M, Fehily SR, Graudins L, Cleland H, et al. A Comparative Analysis Between Antibiotic- and Nonantibiotic-Associated Delayed Cutaneous Adverse Drug Reactions. *The journal of allergy and clinical immunology In practice*. 2016 Nov - Dec;4(6):1187-93. PubMed PMID: 27283055.
4. Saka B, Barro-Traore F, Atadokpede FA, Kobangue L, Niamba PA, Adegbidi H, et al. Stevens-Johnson syndrome and toxic epidermal necrolysis in sub-Saharan Africa: a multicentric study in four countries. *International journal of dermatology*. 2013 May;52(5):575-9. PubMed PMID: 23330601. Epub 2013/01/22. eng.
5. Lin YF, Yang CH, Sindy H, Lin JY, Rosaline Hui CY, Tsai YC, et al. Severe cutaneous adverse reactions related to systemic antibiotics. *Clinical infectious diseases : an official publication of the Infectious Diseases Society of America*. 2014 May;58(10):1377-85. PubMed PMID: 24599767.
6. Su P, Aw CW. Severe cutaneous adverse reactions in a local hospital setting: a 5-year retrospective study. *International journal of dermatology*. 2014 Nov;53(11):1339-45. PubMed PMID: 25070588. Epub 2014/07/30. eng.
7. Kardaun SH, Sekula P, Valeyrie-Allanore L, Liss Y, Chu CY, Creamer D, et al. Drug reaction with eosinophilia and systemic symptoms (DRESS): an original multisystem adverse drug reaction. Results from the prospective RegiSCAR study. *The British journal of dermatology*. 2013 Nov;169(5):1071-80. PubMed PMID: 23855313. Epub 2013/07/17. eng.
8. Rive CM, Bourke J, Phillips EJ. Testing for drug hypersensitivity syndromes. *The Clinical biochemist Reviews / Australian Association of Clinical Biochemists*. 2013 Feb;34(1):15-38. PubMed PMID: 23592889. PMCID: 3626363.
9. Blumenthal KG, Peter JG, Trubiano JA, Phillips EJ. Antibiotic allergy. *Lancet*. 2019 Jan 12;393(10167):183-98. PubMed PMID: 30558872.
10. Phillips EJ, Bigliardi P, Bircher AJ, Broyles A, Chang YS, Chung WH, et al. Controversies in drug allergy: Testing for delayed reactions. *The Journal of allergy and clinical immunology*. 2019 Jan;143(1):66-73. PubMed PMID: 30573342.
11. Trubiano JA, Douglas AP, Goh M, Slavin MA, Phillips EJ. The safety of antibiotic skin testing in severe T-cell-mediated hypersensitivity of immunocompetent and immunocompromised hosts. *The journal of allergy and clinical immunology In practice*. 2019 Apr;7(4):1341-3 e1. PubMed PMID: 30266590. PMCID: PMC6435428.
12. Trubiano JA, Strautins K, Redwood AJ, Pavlos R, Konvinse KC, Aung AK, et al. The Combined Utility of Ex Vivo IFN-gamma Release Enzyme-Linked ImmunoSpot Assay and In Vivo Skin Testing in Patients with Antibiotic-Associated Severe Cutaneous Adverse Reactions. *The journal of allergy and clinical immunology In practice*. 2018 Jul - Aug;6(4):1287-96 e1. PubMed PMID: 29100867. PMCID: PMC5930120.
13. White KD, Abe R, Ardern-Jones M, Beachkofsky T, Bouchard C, Carleton B, et al. SJS/TEN 2017: Building Multidisciplinary Networks to Drive Science and Translation. *The journal of allergy and clinical immunology In practice*. 2018 Jan - Feb;6(1):38-69. PubMed PMID: 29310768.
14. Mallal S, Phillips E, Carosi G, Molina JM, Workman C, Tomazic J, et al. HLA-B*5701 screening for hypersensitivity to abacavir. *The New England journal of medicine*. 2008 Feb 7;358(6):568-79. PubMed PMID: 18256392. Epub 2008/02/08. eng.
15. Yun J, Marcaida MJ, Eriksson KK, Jamin H, Fontana S, Pichler WJ, et al. Oxypurinol directly and immediately activates the drug-specific T cells via the preferential use of HLA-B*58:01. *Journal of immunology*. 2014 Apr 1;192(7):2984-93. PubMed PMID: 24591375.

16. Kano Y, Hirahara K, Mitsuyama Y, Takahashi R, Shiohara T. Utility of the lymphocyte transformation test in the diagnosis of drug sensitivity: dependence on its timing and the type of drug eruption. *Allergy*. 2007 Dec;62(12):1439-44. PubMed PMID: 17983378.
17. Porebski G. In Vitro Assays in Severe Cutaneous Adverse Drug Reactions: Are They Still Research Tools or Diagnostic Tests Already? *International journal of molecular sciences*. 2017 Aug 10;18(8). PubMed PMID: 28796198.
18. Redwood A, Trubiano J, Phillips EJ. Prevention and Diagnosis of Severe T-Cell-Mediated Adverse Drug Reactions: Are We There Yet? *The journal of allergy and clinical immunology In practice*. 2019 Jan;7(1):228-30. PubMed PMID: 30598178.
19. Klaewsongkram J, Sukasem C, Thantiworasit P, Suthumchai N, Rerknimitr P, Tuchinda P, et al. Analysis of HLA-B Allelic Variation and IFN-gamma ELISpot Responses in Patients with Severe Cutaneous Adverse Reactions Associated with Drugs. *The journal of allergy and clinical immunology In practice*. 2019 Jan;7(1):219-27 e4. PubMed PMID: 29800753.
20. Pichler WJ. *Drug Hypersensitivity*: Karger Publishers; 2007.
21. Copaescu A, Mouhtouris E, Vogrin S, James F, Chua KYL, Holmes NE, et al. The Role of In Vivo and Ex Vivo Diagnostic Tools in Severe Delayed Immune-Mediated Adverse Antibiotic Drug Reactions. *The journal of allergy and clinical immunology In practice*. 2021 May;9(5):2010-5 e4. PubMed PMID: 33453452. Epub 2021/01/17.
22. Copaescu A, Gibson A, Li Y, Trubiano JA, Phillips EJ. An Updated Review of the Diagnostic Methods in Delayed Drug Hypersensitivity. *Front Pharmacol*. 2020;11:573573. PubMed PMID: 33597867. PMCID: PMC7883592. Epub 2021/02/19.
23. regiscar
24. Kang DY, Yun J, Lee SY, Koh YI, Sim DW, Kim S, et al. Korean Severe Cutaneous Adverse Reactions Consortium. A Nationwide Study of Severe Cutaneous Adverse Reactions Based on the Multicenter Registry in Korea. *J Allergy Clin Immunol Pract*. 2021 Feb;9(2):929-936.e7. doi: 10.1016/j.jaip.2020.09.011. Epub 2020 Sep 19. PMID: 32961314.
25. Kidney Disease: Improving Global Outcomes (KDIGO) Acute Kidney Injury Work Group. KDIGO clinical practice guideline for acute kidney injury. *Kidney Int*. 2012;2:1-138
26. Aithal GP, Watkins PB, Andrade RJ, Larrey D, Molokhia M, Takikawa H, et al. Case definition and phenotype standardization in drug-induced liver injury. *Clinical pharmacology and therapeutics*. 2011 Jun;89(6):806-15. PubMed PMID: 21544079.
27. Baiardini I, Braido F, Fassio O, Calia R, Giorgio WC, Romano A, et al. Development and validation of the Drug Hypersensitivity Quality of Life Questionnaire. *Annals of allergy, asthma & immunology : official publication of the American College of Allergy, Asthma, & Immunology*. 2011 Apr;106(4):330-5. PubMed PMID: 21457882.
28. Eldridge SM, Chan CL, Campbell MJ, Bond CM, Hopewell S, Thabane L, et al. CONSORT 2010 statement: extension to randomised pilot and feasibility trials. *BMJ*. 2016;355.

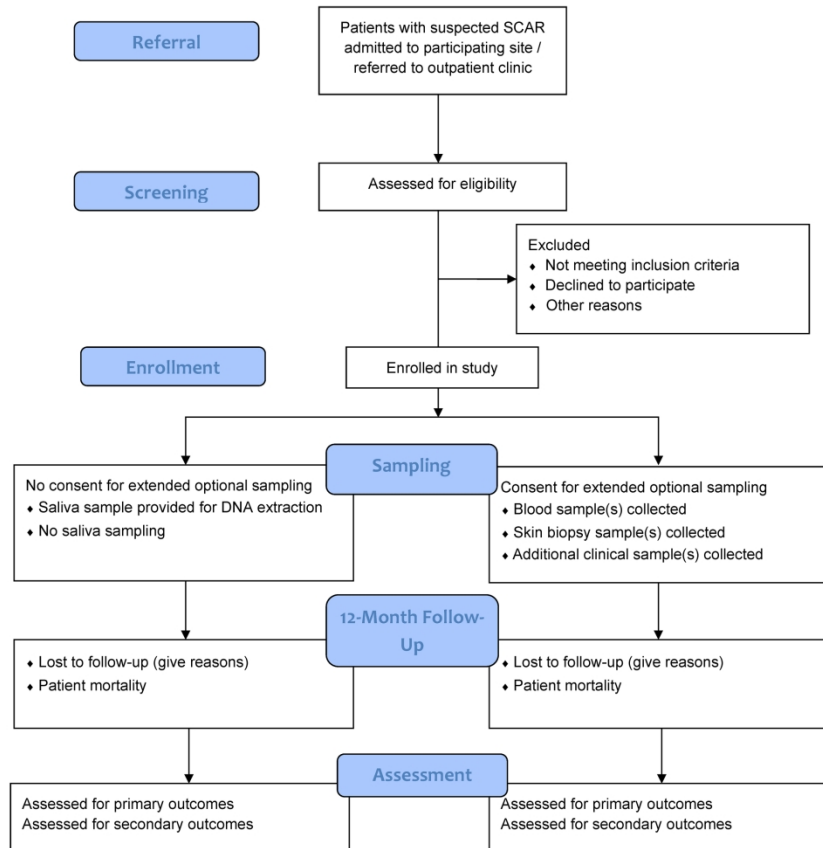


Figure 1. Overview of AUS-SCAR study design (adapted from Eldridge et al., 2010)²⁸

215x279mm (300 x 300 DPI)

SUPPLEMENTARY MATERIALS

Supplementary Table 1. SCAR phenotype-specific criteria for Drug reaction with eosinophilia and systemic symptoms (DRESS). RegiSCAR scoring system (8, 22). Inclusion of cases with drug reaction with eosinophilia and systemic symptoms (DRESS) requires a RegiSCAR score of ≥ 4 and hospitalisation.

RegiSCAR Item		Present		Absent
Fever $\geq 38.5^{\circ}\text{C}$ (101.3°F)		0		-1
Enlarged lymph nodes (>1 cm size, at least two sites)		1		0
Eosinophilia: ≥ 700 or ≥ 10 percent (leucopenia)	≥ 1500 or ≥ 20 percent (leucopenia)	1	2	0
Atypical lymphocytes		1		0
Rash ≥ 50 percent of body surface area		1		0
Rash suggestive (≥ 2 of facial edema, purpura, infiltration, desquamation)		1		0
Skin biopsy suggesting alternative diagnosis		-1		0
Organ involvement: one	two or more	1	2	0
Disease duration >15 days		0		-2
Investigation for alternative cause (blood cultures, ANA, serology for Hepatitis viruses, mycoplasma, Chlamydia) ≥ 3 done and negative		1		0

Supplementary Table 2. SCAR phenotype-specific criteria for Acute generalized exanthematous pustulosis (AGEP). AGEP validation score, EuroSCAR group (23). Inclusion of cases with acute generalised exanthematous pustulosis (AGEP) requires an AGEP score of ≥ 5 .

Morphology	Score
Pustules	
Typical*	+2
Compatible**	+1
Insufficient***	0
Erythema	1
Typical*	
Compatible**	
Insufficient***	
Distribution/patter	1
Typical*	
Compatible**	
Insufficient***	
Post pustular desquamation	1
Yes	
No/insufficient	
Course	
Mucosal involvement	
Yes	-2
No	0
Acute onset (≤ 10 days)	
Yes	0
No	-2
Resolution	

Yes	0
No	-4
Fever ≥ 38	
Yes	+1
No	0
PMN $\geq 7000/\text{mm}^3$	
Yes	+1
No	0
Histology	
Other disease	-10
Not representative/no histology	0
Exocytosis of PMN	+1
Subcorneal and/or intraepidermal non-spongiform or NOS ¹ 2 pustule(s) with papillary oedema or subcorneal and/or intraepidermal spongiform or NOS pustule(s) without papillary oedema (NOS ¹ 2 not otherwise specified)	+2
Spongiform subcorneal and/or intraepidermal pustule(s) ¹ 3 with papillary edema	+3

Supplementary Table 3. Schedule of assessments during study period.

Schedule of Assessments			
Procedure	Visit	Timeline	Volume
Part 1: DNA	Acute admission / outpatient visit	Acute	Saliva sample or additional 9mls blood
Part 2: Blood draws	Acute or follow-up admission / outpatient visit	Acute / convalescent	$\leq 150\text{mls}$ blood (adults) OR $\leq 50\text{ml}$ (aged 12 – 18 years)
Part 2: Skin sample	Acute admission / outpatient visit	Acute / convalescent	3-4mm punch biopsy
Part 2: Blister fluid	Acute admission	Acute	Any amount
Part 2: Other relevant fluid samples (eg. CSF, urine, LN aspirate)	Acute or follow-up admission / outpatient visit	Acute / convalescent	Any amount
Part 3: Patient survey	Follow-up phone call / electronic mail-out	12 months post SCAR onset (convalescent)	N/A

Drug Hypersensitivity Quality of Life Questionnaire (DrHy-Q)

To be performed at 12 months post onset of rash. Assessment should be performed over the phone by a study investigator or via an online tool (REDCap) if they prefer.

If the patient doesn't speak English:

1. Prior to calling all patients, extract the data from the medical record as outlined above. During the medical record review, check Emergency Department presentation notes medical record to determine whether an interpreter was needed during any episodes.
 - a. If an interpreter was needed during the episode, the telephone interview should be undertaken with the assistance of an interpreter.
 - b. If an interpreter was not used during hospital episodes, but a family member was involved with the patient's care due to a language barrier, contact this person to determine whether a suitable time can be set up to invite the patient to participate.
2. If a potential language barrier is not identified in the episode notes, telephone the patient as outlined below. If during the telephone call, it is apparent that an interpreter is needed, attempt to explain to the patient that you will organise an interpreter to assist with the conversation or ask to speak with an English-speaking family member.
3. If a family member or professional telephone interpreter assists with the interview, note this on the data collection form and the scanned medical record.

Verbal consent script for patients discharged from hospital identified from AUS-SCAR database.

"Hello could I please speak to (patient's full given name and surname)?"

Hello, I am _____, a nurse or doctor at the _____ Hospital.

Before we proceed, can I please confirm your full name, your date of birth and address?

We are doing an audit to see how your health is following a recent episode of an adverse reaction you had to a medication and managed at _____ Hospital. If you agree to be involved, we will ask you some questions about yourself. Usually the interview takes about 10 minutes.

We initially obtained your consent to contact you for this survey and this will be your final involvement in the study.

If you would prefer we can email you a link to a safe online version of the questions for you to answer in your own time.

If patient is not home:

"Is there a time that I could call back to speak with (patient's name)?"

If the patient is busy:

"Is there another time that I could call back that would be convenient?"

Questions:

1. "Would you consider yourself allergic to any drugs?"
 - a. **If Yes** – "Could you please list them?"
2. "Did you have any allergy testing performed after your discharge from hospital"?
 - a. **If Yes** – "Do you know the results?"
3. "Did you receive a medical alert letter or card on discharge from the hospital"?
 - a. **If Yes** – "What is listed on this?"
4. "Have you had any recurrent rashes to drugs since discharge from hospital"?
 - a. **If Yes** – "Could you please list the drugs and describe the reactions"

Phenotype-specific questions

- 1
 - 2
 - 3
 - 4
 - 5
 - 6
 - 7
 - 8
 - 9
 - 10
 - 11
 - 12
 - 13
 - 14
 - 15
 - 16
 - 17
 - 18
 - 19
 - 20
 - 21
 - 22
 - 23
 - 24
 - 25
 - 26
 - 27
 - 28
 - 29
 - 30
 - 31
 - 32
 - 33
 - 34
 - 35
 - 36
 - 37
 - 38
 - 39
 - 40
 - 41
 - 42
 - 43
 - 44
 - 45
 - 46
 - 47
 - 48
 - 49
 - 50
 - 51
 - 52
 - 53
 - 54
 - 55
 - 56
 - 57
 - 58
 - 59
 - 60
5. **If antibiotic associated SCAR** - "Have you received any antibiotics since the antibiotic allergy testing was performed?" (if antibiotic associated SCAR)
- a. **If Yes** - "Could you tell me which antibiotics, what they were given for and if you had any reactions?"
 - b. **If Yes** - "Would you be happy with us contacting your general practitioner for these details?"
6. **If SJS or TEN** - "Do you have any ongoing issues with your eyes or vision?"
7. **If SJS or TEN** - "Do you have any ongoing issues of scarring or contractures?"
8. **If DRESS** - "Do you have any autoimmune problems since / after your reaction such as thyroid disease or diabetes"
- a. **If Yes** - "Diabetes" (Y/N), "Thyroid disease" (Y/N), "Lupus" (Y/N), "Other" (Y/N)

Drug Hypersensitivity Quality of Life Questionnaire (DrHy-Q) – as per previously published protocol (24) – Answer True or False

1. I would like an allergy doctor's opinion before taking drugs prescribed by other doctors
2. I feel different from others
3. Even a little discomfort is a problem for me
4. Since I am unable to take drugs every illness limits me more than other people
5. My allergy problems interfere with my sexual life
6. My family and partner are aware of my allergy problem
7. I am afraid of being administered a drug during an emergency to which I am allergic
8. For each infection I would be confident that there is a drug that I can take safely
9. I feel anxious due to my allergy reaction
10. I worry every time I take a drug different from ones that cause my allergic reactions
11. The idea of taking a medicine makes me feel anxious
12. My family doctor is aware of my adverse drug reaction
13. Experiencing an adverse reaction to drugs affects my life
14. I feel anguished due to my problem of allergy reaction
15. I am afraid I could not deal with the pain
16. I've given up leisure activities (sport, vacations, trips) because of my problem
17. I'm in a bad mood due to my problem of allergy reaction

STROBE Statement—Checklist of items that should be included in reports of *cohort studies*

	Item No	Recommendation	Page No
Title and abstract	1	(a) Indicate the study's design with a commonly used term in the title or the abstract	1
		(b) Provide in the abstract an informative and balanced summary of what was done and what was found	2
Introduction			
Background/rationale	2	Explain the scientific background and rationale for the investigation being reported	2,3
Objectives	3	State specific objectives, including any prespecified hypotheses	3
Methods			
Study design	4	Present key elements of study design early in the paper	3
Setting	5	Describe the setting, locations, and relevant dates, including periods of recruitment, exposure, follow-up, and data collection	3-6
Participants	6	(a) Give the eligibility criteria, and the sources and methods of selection of participants. Describe methods of follow-up	3-6
		(b) For matched studies, give matching criteria and number of exposed and unexposed	NA
Variables	7	Clearly define all outcomes, exposures, predictors, potential confounders, and effect modifiers. Give diagnostic criteria, if applicable	7,11-12
Data sources/measurement	8*	For each variable of interest, give sources of data and details of methods of assessment (measurement). Describe comparability of assessment methods if there is more than one group	4-8
Bias	9	Describe any efforts to address potential sources of bias	2
Study size	10	Explain how the study size was arrived at	7
Quantitative variables	11	Explain how quantitative variables were handled in the analyses. If applicable, describe which groupings were chosen and why	7
Statistical methods	12	(a) Describe all statistical methods, including those used to control for confounding	7
		(b) Describe any methods used to examine subgroups and interactions	NA
		(c) Explain how missing data were addressed	NA
		(d) If applicable, explain how loss to follow-up was addressed	NA
		(e) Describe any sensitivity analyses	NA
Results			
Participants	13*	(a) Report numbers of individuals at each stage of study—eg numbers potentially eligible, examined for eligibility, confirmed eligible, included in the study, completing follow-up, and analysed	NA
		(b) Give reasons for non-participation at each stage	NA
		(c) Consider use of a flow diagram	NA
Descriptive data	14*	(a) Give characteristics of study participants (eg demographic, clinical, social) and information on exposures and potential confounders	NA
		(b) Indicate number of participants with missing data for each variable of interest	NA
		(c) Summarise follow-up time (eg, average and total amount)	NA
Outcome data	15*	Report numbers of outcome events or summary measures over time	NA

1	Main results	16	(a) Give unadjusted estimates and, if applicable, confounder-adjusted estimates and their precision (eg, 95% confidence interval). Make clear which confounders were adjusted for and why they were included	NA
2			(b) Report category boundaries when continuous variables were categorized	NA
3			(c) If relevant, consider translating estimates of relative risk into absolute risk for a meaningful time period	NA
4				
5				
6				
7				
8				
9	Other analyses	17	Report other analyses done—eg analyses of subgroups and interactions, and sensitivity analyses	NA
10				
11	Discussion			
12				
13	Key results	18	Summarise key results with reference to study objectives	NA
14	Limitations	19	Discuss limitations of the study, taking into account sources of potential bias or imprecision. Discuss both direction and magnitude of any potential bias	NA
15				
16	Interpretation	20	Give a cautious overall interpretation of results considering objectives, limitations, multiplicity of analyses, results from similar studies, and other relevant evidence	NA
17				
18				
19	Generalisability	21	Discuss the generalisability (external validity) of the study results	NA
20				
21	Other information			
22	Funding	22	Give the source of funding and the role of the funders for the present study and, if applicable, for the original study on which the present article is based	8
23				
24				
25				

*Give information separately for exposed and unexposed groups.

Note: An Explanation and Elaboration article discusses each checklist item and gives methodological background and published examples of transparent reporting. The STROBE checklist is best used in conjunction with this article (freely available on the Web sites of PLoS Medicine at <http://www.plosmedicine.org/>, Annals of Internal Medicine at <http://www.annals.org/>, and Epidemiology at <http://www.epidem.com/>). Information on the STROBE Initiative is available at <http://www.strobe-statement.org>.

Study Protocol: Australasian registry of Severe Cutaneous Adverse Reactions (AUS-SCAR)

Journal:	<i>BMJ Open</i>
Manuscript ID	bmjopen-2021-055906.R2
Article Type:	Protocol
Date Submitted by the Author:	29-Jun-2022
Complete List of Authors:	<p>James, Fiona; Austin Health, Centre for Antibiotic Allergy & Research, Department of Infectious Diseases Goh, Michelle S Y; St Vincent's Hospital Melbourne Pty Ltd, Department of Dermatology; Alfred Health, Department of Dermatology Mouhtouris, Effie; Austin Health, Centre for Antibiotic Allergy & Research, Department of Infectious Diseases Vogrin, Sara; The University of Melbourne, Department of Medicine Chua, Kyra; Austin Health, Centre for Antibiotic Allergy & Research, Department of Infectious Diseases Holmes, NE ; Austin Health, Centre for Antibiotic Allergy & Research, Department of Infectious Diseases Awad, Andrew; Austin Health, Centre for Antibiotic Allergy & Research, Department of Infectious Diseases Copaescu, Ana-Maria; Austin Health, Centre for Antibiotic Allergy & Research, Department of Infectious Diseases De Luca, Joseph; Austin Health, Centre for Antibiotic Allergy and Research, Department of Infectious Diseases Zubrinich, Celia; Alfred Health, Allergy, Asthma & Clinical Immunology; Monash University, School of Public Health and Preventive Medicine Gin, Douglas; Alfred Hospital, Department of Dermatology Cleland, H ; Alfred Hospital, Victorian Adult Burns Service Douglas, Abby; Peter MacCallum Cancer Centre, Infectious Diseases and Infection Control Kern, Johannes; The Royal Melbourne Hospital, Dermatology Department Katelaris, Constance; Campbelltown Hospital, Allergy / Clinical Immunology Thien, Francis ; Monash University, Eastern Health Clinical School; Eastern Health, Department of Respiratory and Sleep Medicine Barnes, Sara; Monash Health, Department of Allergy/Immunology Yun, James; Nepean Hospital, Immunology and Rheumatology Tong, Winnie; St Vincent's Hospital Sydney, HIV & Immunology Smith, William; Royal Adelaide Hospital, Clinical Immunology and Allergy Carr, Andrew; St Vincent's Hospital Sydney, Immunology Anderson, Tara; Royal Hobart Hospital, Department of Infectious Diseases Legg, Amy; Royal Darwin Hospital, Pharmacy Department Bourke, Jack; Fiona Stanley Hospital, Department of Allergy and Immunology Mackay, Laura; The University of Melbourne, Department of Microbiology and Immunology Aung, Ar Kar; Alfred Hospital, Department of General Medicine</p>

	Phillips, Elizabeth; Murdoch University, Institute for Immunology and Infectious Diseases; Vanderbilt University Medical Center, Department of Infectious Diseases Trubiano, Jason ; Austin Health, Centre for Antibiotic Allergy & Research, Infectious Diseases; Peter MacCallum Cancer Centre, National Centre for Infections in Cancer
Primary Subject Heading:	Immunology (including allergy)
Secondary Subject Heading:	Epidemiology
Keywords:	IMMUNOLOGY, Adverse events < THERAPEUTICS, EPIDEMIOLOGY, PREVENTIVE MEDICINE, CLINICAL PHARMACOLOGY, Dermatological epidemiology < DERMATOLOGY

SCHOLARONE™
Manuscripts

1
2
3
4
5
6
7
8
9
10
11
12
13
14
15
16
17
18
19
20
21
22
23
24
25
26
27
28
29
30
31
32
33
34
35
36
37
38
39
40
41
42
43
44
45
46
47
48
49
50
51
52
53
54
55
56
57
58
59
60

Study Protocol: Australasian registry of Severe Cutaneous Adverse Reactions (AUS-SCAR)

Fiona James¹, Michelle S Y Goh^{2,10}, Effie Mouhtouris¹, Sara Vogrin³, Kyra Chua^{1,5}, Natasha Holmes^{1,5}, Andrew Awad¹, Ana Copaescu^{1,4}, Joseph De Luca^{1,5}, Celia Zubrinich^{7,8}, Douglas Gin¹⁰, Heather Cleland⁹, Abby Douglas^{11,25}, Johannes Kern¹², Connie Katelaris¹³, Francis Thien¹⁴, Sara Barnes¹⁵, James Yun¹⁶, Winnie Tong¹⁷, William Smith¹⁸, Andrew Carr¹⁷, Tara Anderson¹⁹, Amy Legg²¹, Jack Bourke²⁰, Laura Mackay²², Ar Kar Aung⁶, Elizabeth Phillips^{23,24}, Jason Trubiano^{1,25}

1. Centre for Antibiotic Allergy and Research, Department of Infectious Diseases, Austin Health, Heidelberg, Victoria, Australia
2. Department of Dermatology, St Vincent's Hospital, Fitzroy, Victoria, Australia
3. Department of Medicine, St Vincent's Hospital, University of Melbourne, Fitzroy, Australia
4. Department of Infection and Immunity, McGill University Health Centre, Montreal, Canada
5. Department of Medicine (Austin Health), The University of Melbourne, Heidelberg, Victoria, Australia
6. Department of General Medicine, Alfred Hospital, Melbourne, Victoria, Australia
7. Department of Allergy, Immunology & Respiratory Medicine (AIRmed), Alfred Hospital, Melbourne, Australia
8. School of Public Health and Preventive Medicine, Monash University, Melbourne, Victoria, Australia
9. Victorian Adult Burns Service, Alfred Hospital, Melbourne, Victoria, Australia
10. Department of Dermatology, Alfred Health, Melbourne, Victoria, Australia
11. Department of Infectious Diseases and Infection Prevention, Peter MacCallum Cancer Centre, The University of Melbourne, Parkville, VIC, Australia
12. Dermatology Department, The Royal Melbourne Hospital, Parkville, Victoria, Australia
13. Immunology & Allergy Unit, Campbelltown Hospital, New South Wales, Australia
14. Respiratory Medicine, Eastern Health, Box Hill and Monash University, Melbourne, VIC, Australia
15. Department of Allergy/Immunology, Monash Health, Melbourne, VIC, Australia
16. Immunology and Rheumatology, Nepean Hospital, Sydney, NSW, Australia
17. HIV & Immunology Department, St Vincent's Hospital Sydney, UNSW Sydney, New South Wales, Australia
18. Immunology and Allergy Department, Royal Adelaide Hospital, Adelaide, Australia
19. Department of Infectious Diseases, Royal Hobart Hospital, Hobart, TAS, Australia
20. Department of Allergy and Immunology, Fiona Stanley Hospital, Murdoch, Australia
21. Pharmacy Department, Royal Darwin Hospital, Tiwi, NT, Australia
22. Department of Microbiology and Immunology, University of Melbourne, Melbourne, Victoria, Australia
23. Institute for Immunology and Infectious Diseases, Murdoch University, Murdoch, Western Australia, Australia
24. Department of Infectious Diseases, Vanderbilt University Medical Centre, Nashville, Tennessee, USA.
25. The National Centre for Infections in Cancer, Peter MacCallum Cancer Centre, Melbourne, Victoria, Australia

Protocol Version: 8

Corresponding Author:

Fiona James
 Centre for Antibiotic Allergy and Research
 Department of Infectious Diseases, Austin Health
 145 Studley Road, Heidelberg VIC 3121
 AUSTRALIA
 Fiona.james@austin.org.au

Trial Sponsor:

A/Prof Jason Trubiano
 Centre for Antibiotic Allergy and Research
 Department of Infectious Diseases, Austin Health
 145 Studley Road, Heidelberg VIC 3121
 AUSTRALIA

Abstract

Introduction Severe cutaneous adverse reactions (SCAR) are a group of T cell-mediated hypersensitivities associated with significant morbidity, mortality and hospital costs¹. Clinical phenotypes include Stevens-Johnson Syndrome (SJS), toxic epidermal necrolysis (TEN), drug

1
2
3 reaction with eosinophilia and systemic symptoms (DRESS) and acute generalised exanthematous
4 pustulosis (AGEP). In this Australasian, multi-centre, prospective registry, we plan to examine the
5 clinical presentation, drug causality, genomic predictors, potential diagnostic approaches, treatments
6 and long-term outcomes of SCAR in Australia and New Zealand.
7

8
9 **Methods and analysis** Adult and adolescent patients with SCAR including SJS, TEN, DRESS,
10 AGEP and another T cell-mediated hypersensitivity, generalised bullous fixed drug eruption
11 (GBFDE), will be prospectively recruited. A waiver of consent has been granted for some sites to
12 retrospectively include cases which result in early mortality. DNA will be collected for all prospective
13 cases. Blood, blister fluid and skin biopsy sampling is optional and subject to patient consent and site
14 capacity. To develop culprit drug identification and prevention, genomic testing will be performed to
15 confirm HLA type and ex vivo testing will be performed via IFN- γ release ELISpot assay using
16 collected peripheral blood mononuclear cells (PBMCs). The long term outcomes of SCAR will be
17 investigated with a 12-month quality of life survey and examination of prescribing and mortality data.
18
19

20
21 **Ethics and dissemination** This study was reviewed and approved by the Austin Health Human
22 Research Ethics Committee (HREC/50791/Austin-19). Results will be published in peer-reviewed
23 journals and presented at relevant conferences.
24

25 **Registration Number:** ACTRN12619000241134
26

27 **Strengths and limitations of the study**

- 28 • The strength of AUS-SCAR lies in its prospective design, allowing for the real-time
29 collection of clinical data, standardised investigation and sampling for genomic evaluation
30 and ex-vivo diagnostics.
- 31 • There will likely be selection bias favouring the recruitment of adults, less critically ill
32 patients, patients living in metropolitan areas where the majority of study sites are located and
33 patients whose first language is English.
- 34 • A limitation of the sampling strategy is the large blood volume required due to the number of
35 PBMCs required for successful ELISpot assay, complicated by the often poor viability of
36 cells from acute bleeds due to critical illness. Many hospital-adjacent laboratories are also not
37 set up to process PBMCs, blister fluid or skin specimens requiring same-day transport to
38 specialised research labs.
- 39 • Selection bias is also likely to affect the sampling strategy as treating teams may be less
40 willing to overburden children and critically ill patients.
- 41 • Finally, the registry is not designed to achieve complete case capture across the study period
42 and recruiting the target sample size will be dependent on successful recognition of cases at
43 each site.
44
45
46
47
48
49
50

51 **INTRODUCTION**

52
53 SCAR are a group of T cell-mediated hypersensitivities – including Stevens-Johnson Syndrome (SJS),
54 toxic epidermal necrolysis (TEN), drug reaction with eosinophilia and systemic symptoms (DRESS)
55 and acute generalized exanthematous pustulosis (AGEP) (1). Other severe T cell-mediated
56 hypersensitivities include diseases such as generalized bullous fixed drug eruption (GBFDE), drug-
57 induced liver injury (DILI) and acute interstitial nephritis (AIN) (1, 2). SCAR can be associated with
58 significant morbidity, hospital costs, increased demand for specialist testing and high mortality (3-6).
59
60

1
2
3 Despite this, an understanding of the clinical, genomic and pharmacological predictors of each
4 phenotype remains absent from current practice. Further, there is currently a lack of consistency
5 among the recommendations in treatment guidelines for these severe reactions.
6

7 Causality assessment in SCAR is often complex as multiple drugs are frequently involved (3, 7-9).
8 Whilst the use of skin testing (*in vivo*) has been increasingly employed, it is hampered by low
9 sensitivity and concerns around safety (10-12). Progress has been made in understanding the
10 underlying immune mechanisms and genetic predisposition of SCAR (13), providing strong support
11 for the role of HLA typing in identifying specific drug-associated reactions (e.g. HLA-B*57:01 for
12 abacavir hypersensitivity, HLA-B*58:01 for allopurinol hypersensitivity) (14, 15). Further association
13 studies are required, however, to capitalise on this knowledge and previously provided roadmap. The
14 use of novel *ex vivo* T-cell diagnostics to aid drug causality assessment, including lymphocyte
15 transformation testing (LTT) and IFN- γ Enzyme Linked ImmunoSpot (ELISpot) Assay, has been
16 utilized with some success in a research setting but their clinical utility is not yet established (12, 16-
17 22).
18
19

20 The long-term outcomes of SCAR including quality of life, disease recurrence, inadvertent drug re-
21 exposure and medication safety are not well-described. The development of a regional clinical and
22 DNA registry of SCAR will allow investigators to (i) perform surveillance for new and emerging drug
23 causality, (ii) develop causality and phenotypic prediction rules, (iii) understand best-practice
24 treatment approaches, (iv) discover genomic predictors that prevent SCAR onset and (v) improve
25 long-term outcomes and medication safety. The additional biospecimen component of the study will
26 allow investigators to assess the utility of T-cell diagnostics in aiding drug causality. While national
27 SCAR registries have been set up successfully in Europe (RegiSCAR) and Korea (KoSCAR) (23-24),
28 AUS-SCAR will be the first registry of severe drug allergy in the Australasian region.
29
30
31
32

33 **METHODS AND ANALYSIS**

34
35 AUS-SCAR is an Australasian, multicentre, prospective registry of severe cutaneous adverse
36 reactions in adults and adolescents > 12 years of age. Participating sites for recruitment include Austin
37 Health, Alfred Health, Eastern Health, Peter MacCallum Cancer Centre, St Vincent's Hospital
38 Melbourne, Monash Health, Royal Melbourne Hospital, Epworth Healthcare, Campbelltown Hospital,
39 Nepean Hospital, St Vincent's Hospital Sydney, Fiona Stanley Hospital, Sir Charles Gairdner
40 Hospital, Royal Brisbane and Women's Hospital, Queensland Children's Hospital, Royal Adelaide
41 Hospital, Flinders Medical Centre, Royal Darwin Hospital, Launceston General Hospital and
42 Auckland City Hospital. The Peter Doherty Institute for Infection and Immunity and Institute for
43 Immunology and Infectious Diseases (IIID) are collaborating sites for sample analysis. Recruitment
44 commenced in July 2019 and is planned to continue across all sites until accrual has reached $n = 500$.
45
46
47

48 **Study Oversight**

49 A 5-7 person steering committee will be formed following nominations from participating site
50 principal investigators. Steering Committee members will meet regularly to discuss the direction of
51 the project, assess requests from investigators and identify any potential risks or issues. The chair of
52 the Steering Committee will be the Chief Investigator. A Steering Committee member can step down
53 from this role at any time and nominations for a new member will be sought from participating site
54 principal investigators. The Steering Committee should have at least one of the following at all times:
55 infectious diseases physician, allergist/immunologist and dermatologist.
56
57

58 The clinical and DNA database and results of the study are the common property of AUS-SCAR
59 investigators and cannot be utilised without the formal authorization of the Steering Committee. The
60

1
2
3 release of results at conference proceedings, meetings and/or in publication are decided upon by the
4 Steering Committee of AUS-SCAR.
5
6

7 **Project development**

8 Any principal investigator can propose a project utilizing AUS-SCAR data. This proposal will be
9 forwarded to all investigators for comment and the Steering Committee will provide (i) feedback to
10 the proposing investigator and (ii) approval/non-approval of the project.
11
12

13 **Patient Involvement**

14
15
16 Although they have not been involved in the study design, patients will be invited to assist with
17 identifying the best methods of disseminating results to patients and the public following publication.
18 Patients or consumer representatives may also be considered for inclusion in the Steering Committee.
19

20 **Figure 1. Overview of AUS-SCAR study design (adapted from Eldridge et al., 2010)**

21 **Participants**

22
23
24 Patients will be invited to participate in the registry if 1) they are admitted to or referred to a
25 participating site with a suspected SCAR, 2) two site investigators have agreed on inclusion, 3) SCAR
26 is confirmed by a site dermatologist or immunologist or is biopsy proven and 4) the SCAR phenotype
27 is consistent with disease-specific criteria and alternative diagnoses have been ruled out. Disease-
28 specific criteria for SJS/TEN includes the presence of widespread erythema with skin detachment and
29 more than 1 blister; patients with a suspected viral trigger will still be included if they meet eligibility
30 criteria and case validation. For GBFDE, there must be multifocal, widespread, bullous-type fixed
31 drug eruption characterised by sharply defined bullae at site of recurrent drug administration. Criteria
32 for DRESS and AGEP are outlined in **Supplementary Tables 1 and 2**, respectively. The study design
33 and biospecimen sampling schedule are outlined in **Figure 1 (25)**.
34
35
36

37 At a later stage of the project, extended recruitment may include the following phenotypes, following
38 approval by > 50% of principal investigators and the Project Steering Committee:
39

- 40 a. **AIN** – Required hospitalization and biopsy proven with acute kidney injury (increase in
41 serum creatinine by ≥ 0.3 mg/dl within 48 hours or increase in serum creatinine to ≥ 1.5
42 times baseline within 7 days or urine output < 0.5 ml/kg/h for 6 hours) (26) with other
43 common causes excluded. Non-biopsy proven cases with a single implicated drug, urinary
44 and peripheral eosinophilia, acute kidney injury and resolution of renal disease post drug
45 removal can be included.
46
- 47 b. **DILI** – Required hospitalization and biopsy proven with ≥ 5 x upper limit of normal (ULN)
48 for ALT or ≥ 2 ULN for ALP, or ≥ 3 ULN for ALT with bilirubin ≥ 2 ULN (27). Non-
49 biopsy proven cases with a single implicated drug, acute liver injury, autoimmune and other
50 causes excluded and resolution of liver disease post drug removal can be included.
51
- 52 c. **FDE** – Dermatologist confirmed, well-defined, circular, hyper-pigmented single or a few
53 plaques that recur in fixed locations upon ingestion of drug (therefore requires 2 or more
54 occurrences).
55
56
57

58 **Biospecimen Collection and Analysis**

59 **Part 1. Clinical data and DNA collection**

1
2
3 Following informed consent, baseline patient demographics, medical history and clinical data including
4 histopathology and clinical photography will be collected from the patient and medical record and
5 entered into a secure REDCap database. Consent may be obtained from the patient, parent/guardian or
6 medical treatment decision-maker, as appropriate and subject to local or national law. A waiver of
7 consent has been obtained for some participating institutions to collect clinical data retrospectively for
8 patients that die prior to obtaining informed consent.
9

10 DNA will be collected for all patients enrolled prospectively: this will be extracted from saliva for
11 patients who do not consent to additional sample collection or from whole blood or peripheral blood
12 mononuclear cells (PBMCs) for patients who agree to additional blood collection. Genomic testing will
13 be performed at the Institute for Immunology and Infectious Diseases (IID), Murdoch University,
14 Perth, Western Australia for HLA-A, HLA-B, HLA-C, DR/DQ/DP. Four-digit typing is performed on
15 extracted DNA using the 454 FLX platform. Specific HLA loci are PCR-amplified using sample
16 specific MID-tagged primers that amplify polymorphic exons from Class I (A, B, C Exons 2 and 3) and
17 Class II (DQ, Exons 2 and 3; DRB and DPB1, Exon 1) MHC genes. Amplified DNA products from
18 unique MID-tagged products (up to 48 MIDs) are then pooled in equimolar ratios and subjected to
19 library preparation, quantitation and emulsion PCR suitable for entry into the 454 FLX sequencing
20 pipeline. Clonally enriched beads are used for 454 Titanium chemistry based sequencing on the 454
21 FLX+ sequencer. Sequences are then separated by MID tags and alleles called using an in house
22 accredited HLA allele caller software pipeline using the latest IMGT HLA allele database as the allele
23 reference library. Further Genome Wide Association Studies (GWAS), RNA-seq and virologic
24 assessment may be performed on stored DNA samples to determine if genetic and viral variants are
25 associated with SCAR phenotype.
26
27
28
29
30
31

32 **Part 2. Additional biospecimen collection**

33 This part of the study is optional for participating sites and for patients. Samples will need to be stored
34 at the participating site or at a collaborating AUS-SCAR site if there is capacity. Informed consent must
35 be obtained for all samples requested. The sampling schedule is outlined below and in **Supplementary**
36 **Table 3**.
37
38
39

40 **Blood**

41 For adults, an initial blood sample of 100 - 150 ml will be taken following informed consent. A reduced
42 blood volume of 20 – 50 ml is taken for patients under 18 years of age. A convalescent follow-up blood
43 draw of the same volume will be taken at 12 months post-SCAR onset for consenting patients. Repeat
44 blood draws may be requested at both time points if the full volume was unable to be collected or cell
45 viability is poor, subject to ongoing patient consent.
46
47
48
49

50 **Skin biopsy**

51 A 3-4mm punch biopsy may be taken from an affected area at the acute stage and 12 months post-
52 SCAR onset. For a subset of patients, repeat biopsies may be requested for comparison studies.
53
54

55 **Blister fluid**

56 For patients with blisters present, blister fluid of any volume may be collected into a heparinised tube
57 for the extraction of PBMCs. For patients whose blisters reform, additional fluid collection may be
58 requested.
59
60

Additional clinical samples

Additional clinical samples may be collected if considered to be of potential clinical relevance by the site investigator (e.g. cerebrospinal fluid, lymph node aspirate).

Sample processing

Samples are to be processed and stored at participating sites (or a collaborating AUS-SCAR site on request from participating site) and cannot be used in AUS-SCAR studies without written approval from the participating site. The participating site can choose to utilize these samples for any research project they have additional local ethics approval for, without consent required from AUS-SCAR investigators. The Doherty Institute for Infection and Immunity or Institute for Immunology and Infectious Diseases are available for assistance with sample processing where possible.

Part 3. Patient follow up

A 12-month follow-up will be performed to collect data regarding (i) drug utilization, (ii) health outcomes and (iii) quality of life (**Supplementary Materials**). Whether the patient received a referral for further allergy/immunology evaluation (left to the discretion of the treating team) and the results of any allergy testing performed will be captured. Mortality/morbidity and prescribing data will be extracted from the medical record. For available patients, a quality of life assessment will be performed using the previously validated and adapted Drug Hypersensitivity Quality of Life Questionnaire (DrHy-Q) (28). A telephone script is provided with the DrHy-Q in Supplementary Materials. The questionnaire may also be sent out via email. Prescribing and mortality data may be obtained from PBS following approval or the participant's GP where not available from the medical record or patient.

Study Aims

1. To develop a national registry of SCAR to ensure continuous surveillance of new and emerging causative drugs and improve pharmacovigilance
2. To describe the causality and epidemiology of SCAR in Australasia
3. To determine patient, drug and clinical factors that predict SCAR phenotypes and which treatments improve outcomes
4. To determine the treatments employed for SCAR in Australasia and describe patient outcomes
5. To determine pharmacogenomic and genomic associations in SCAR.
6. To examine the long term impacts of SCAR including restricted medication use and QOL impact

Primary outcome measures

- Proportion (n, %) of SCAR secondary to antibiotics or non-antibiotics (addressed using the most likely implicated drug as determined through internal and external validation)
 - Proportion (n, %) for each drug class

Secondary outcome measures

- Proportion (n, %) of SCAR treated with a potentially disease-modifying therapy

- Proportion (n, %) for each treatment type e.g. topical or systemic corticosteroids, intravenous immunoglobulin (IVIG), immunomodulators (e.g. rituximab), antivirals (e.g. ganciclovir)
- For each treatment type: Length-of-stay (days), inpatient mortality, all-cause mortality (90-day, 12-months), disease recurrence
- Proportion (n, %) of SCAR referred for *in vivo/ex vivo* allergy testing
 - Proportion (n, %) of each testing modality – patch testing, intradermal testing, *ex vivo* (LTT, ELISpot, other)
 - Proportion (n, %) positive on skin testing
- For each SCAR phenotype: Proportion (n, %) associated with inpatient and 12-month mortality
- For each SCAR phenotype: Proportion (n, %) associated with relapse or drug re-exposure within 12 months
- Risk factors associated with development of each SCAR phenotype
 - Patient (host factors), drug (pharmacological class), clinical (disease factors)
- Risk factors associated with SCAR mortality
 - Patient (host factors), drug (pharmacological class), disease (phenotype)
- For each SCAR phenotype and implicated drug: Genomic associations within HLA class I and/or II
- Utility of *in vitro/ex vivo* diagnostics in assigning drug causality in SCAR
- The long-term sequelae of SCAR

Sample size

Due to the registry study design, a sample size calculation is not required. The projected recruitment number over a 5-year period is 500 (80 cases are estimated over 5 years at a single institution (3) - allowing for 35% minimum case capture at 20 sites, the extrapolated numbers are 560 over this period).

Statistical analysis

Statistical analysis using Stata (StataCorp, Texas) will be performed by study investigators with the assistance of a biostatistician as required. Categorical variables will be summarized using frequency and percentage and compared using a chi-square test or Fisher's exact test. Continuous variables will first be assessed for significant skew using a Shapiro-Wilk test. They will then be summarized using mean and standard deviation (SD) or median and inter-quartile range as appropriate and compared using a t-test or Wilcoxon signed-rank / Mann-Whitney U test. Multivariable logistic regression modelling will be utilized to examine secondary objectives related to variables/factors predicting specified outcomes.

ETHICS AND DISSEMINATION

This study was registered on the Australian New Zealand Clinical Trials Registry (ANZCTR) on 19th February 2019 (Trial ID ACTRN12619000241134) and received ethical approval from the Austin Health Human Research Ethics Committee (HREC Number HREC/50791/Austin-19) in May 2019.

1
2
3 An initial publication of pilot data is planned after the recruitment of 100 patients. Patient demographics,
4 SCAR phenotype, implicated drugs, ELISpot and HLA results will be included. Principal investigators
5 from each participating site will be included as authors. Authorship will be guided by the Project
6 Steering Committee with reference to the International Committee of Medical Journal Editors
7 guidelines.
8
9

10 Further results of this research project are planned to be published and/or presented in a variety of
11 scientific forums and journals. The data presented will explore SCAR epidemiology in Australasia, drug
12 causality, genomic predictors, diagnostic tools and potential treatments.
13
14
15

16 **Authors' contributions**

17
18 FJ is the Project Manager and Corresponding Author, responsible for providing central operational
19 oversight of the study. JT, EJP, JY, MSYG, WT, CZ, DG and CK contributed to the initial design of
20 the study and drafting of the protocol. FJ, MSYG, EM, SV, KC, NEH, AA, AMC, JFD, CZ, DG, HC,
21 AD, JK, CK, FT, SB, JY, WT, WS, AC, TA, AL, JB, LM, AKA, EJP and JT contributed to pilot data
22 acquisition informing the study design and substantial revision of the manuscript. JAT is the
23 Coordinating Principal Investigator, providing overall responsibility for the study. All authors have
24 read and approved the final manuscript.
25
26

27 **Funding statement**

28
29 This research was funded by the Allergy and Immunology Foundation of Australasia (AIFA) and the
30 Faculty of Medicine, Dentistry and Health Sciences, The University of Melbourne (Grant numbers not
31 applicable).
32
33

34 **Competing interests**

35
36 None to declare.
37

38 **Word count:** 2675
39
40
41
42
43
44
45
46
47
48
49
50
51
52
53
54
55
56
57
58
59
60

REFERENCES

1. Konvinse KC, Phillips EJ, White KD, Trubiano JA. Old dog begging for new tricks: current practices and future directions in the diagnosis of delayed antimicrobial hypersensitivity. *Current opinion in infectious diseases*. 2016 Dec;29(6):561-76. PubMed PMID: 27753687. PMCID: PMC5113146.
2. Duong TA, Valeyrie-Allanore L, Wolkenstein P, Chosidow O. Severe cutaneous adverse reactions to drugs. *Lancet (London, England)*. 2017;390(10106):1996-2011. PubMed PMID: Medline:28476287. English.
3. Trubiano JA, Aung AK, Nguyen M, Fehily SR, Graudins L, Cleland H, et al. A Comparative Analysis Between Antibiotic- and Nonantibiotic-Associated Delayed Cutaneous Adverse Drug Reactions. *The journal of allergy and clinical immunology In practice*. 2016 Nov - Dec;4(6):1187-93. PubMed PMID: 27283055.
4. Saka B, Barro-Traore F, Atadokpede FA, Kobangue L, Niamba PA, Adegbidi H, et al. Stevens-Johnson syndrome and toxic epidermal necrolysis in sub-Saharan Africa: a multicentric study in four countries. *International journal of dermatology*. 2013 May;52(5):575-9. PubMed PMID: 23330601. Epub 2013/01/22. eng.
5. Lin YF, Yang CH, Sindy H, Lin JY, Rosaline Hui CY, Tsai YC, et al. Severe cutaneous adverse reactions related to systemic antibiotics. *Clinical infectious diseases : an official publication of the Infectious Diseases Society of America*. 2014 May;58(10):1377-85. PubMed PMID: 24599767.
6. Su P, Aw CW. Severe cutaneous adverse reactions in a local hospital setting: a 5-year retrospective study. *International journal of dermatology*. 2014 Nov;53(11):1339-45. PubMed PMID: 25070588. Epub 2014/07/30. eng.
7. Kardaun SH, Sekula P, Valeyrie-Allanore L, Liss Y, Chu CY, Creamer D, et al. Drug reaction with eosinophilia and systemic symptoms (DRESS): an original multisystem adverse drug reaction. Results from the prospective RegiSCAR study. *The British journal of dermatology*. 2013 Nov;169(5):1071-80. PubMed PMID: 23855313. Epub 2013/07/17. eng.
8. Rive CM, Bourke J, Phillips EJ. Testing for drug hypersensitivity syndromes. *The Clinical biochemist Reviews / Australian Association of Clinical Biochemists*. 2013 Feb;34(1):15-38. PubMed PMID: 23592889. PMCID: 3626363.
9. Blumenthal KG, Peter JG, Trubiano JA, Phillips EJ. Antibiotic allergy. *Lancet*. 2019 Jan 12;393(10167):183-98. PubMed PMID: 30558872.
10. Phillips EJ, Bigliardi P, Bircher AJ, Broyles A, Chang YS, Chung WH, et al. Controversies in drug allergy: Testing for delayed reactions. *The Journal of allergy and clinical immunology*. 2019 Jan;143(1):66-73. PubMed PMID: 30573342.
11. Trubiano JA, Douglas AP, Goh M, Slavin MA, Phillips EJ. The safety of antibiotic skin testing in severe T-cell-mediated hypersensitivity of immunocompetent and immunocompromised hosts. *The journal of allergy and clinical immunology In practice*. 2019 Apr;7(4):1341-3 e1. PubMed PMID: 30266590. PMCID: PMC6435428.
12. Trubiano JA, Strautins K, Redwood AJ, Pavlos R, Konvinse KC, Aung AK, et al. The Combined Utility of Ex Vivo IFN-gamma Release Enzyme-Linked ImmunoSpot Assay and In Vivo Skin Testing in Patients with Antibiotic-Associated Severe Cutaneous Adverse Reactions. *The journal of allergy and clinical immunology In practice*. 2018 Jul - Aug;6(4):1287-96 e1. PubMed PMID: 29100867. PMCID: PMC5930120.
13. White KD, Abe R, Ardern-Jones M, Beachkofsky T, Bouchard C, Carleton B, et al. SJS/TEN 2017: Building Multidisciplinary Networks to Drive Science and Translation. *The journal of allergy and clinical immunology In practice*. 2018 Jan - Feb;6(1):38-69. PubMed PMID: 29310768.
14. Mallal S, Phillips E, Carosi G, Molina JM, Workman C, Tomazic J, et al. HLA-B*5701 screening for hypersensitivity to abacavir. *The New England journal of medicine*. 2008 Feb 7;358(6):568-79. PubMed PMID: 18256392. Epub 2008/02/08. eng.
15. Yun J, Marcaida MJ, Eriksson KK, Jamin H, Fontana S, Pichler WJ, et al. Oxypurinol directly and immediately activates the drug-specific T cells via the preferential use of HLA-B*58:01. *Journal of immunology*. 2014 Apr 1;192(7):2984-93. PubMed PMID: 24591375.

16. Kano Y, Hirahara K, Mitsuyama Y, Takahashi R, Shiohara T. Utility of the lymphocyte transformation test in the diagnosis of drug sensitivity: dependence on its timing and the type of drug eruption. *Allergy*. 2007 Dec;62(12):1439-44. PubMed PMID: 17983378.
17. Porebski G. In Vitro Assays in Severe Cutaneous Adverse Drug Reactions: Are They Still Research Tools or Diagnostic Tests Already? *International journal of molecular sciences*. 2017 Aug 10;18(8). PubMed PMID: 28796198.
18. Redwood A, Trubiano J, Phillips EJ. Prevention and Diagnosis of Severe T-Cell-Mediated Adverse Drug Reactions: Are We There Yet? *The journal of allergy and clinical immunology In practice*. 2019 Jan;7(1):228-30. PubMed PMID: 30598178.
19. Klaewsongkram J, Sukasem C, Thantiworasit P, Suthumchai N, Rerknimitr P, Tuchinda P, et al. Analysis of HLA-B Allelic Variation and IFN-gamma ELISpot Responses in Patients with Severe Cutaneous Adverse Reactions Associated with Drugs. *The journal of allergy and clinical immunology In practice*. 2019 Jan;7(1):219-27 e4. PubMed PMID: 29800753.
20. Pichler WJ. *Drug Hypersensitivity*: Karger Publishers; 2007.
21. Copaesu A, Mouhtouris E, Vogrin S, James F, Chua KYL, Holmes NE, et al. The Role of In Vivo and Ex Vivo Diagnostic Tools in Severe Delayed Immune-Mediated Adverse Antibiotic Drug Reactions. *The journal of allergy and clinical immunology In practice*. 2021 May;9(5):2010-5 e4. PubMed PMID: 33453452. Epub 2021/01/17.
22. Copaesu A, Gibson A, Li Y, Trubiano JA, Phillips EJ. An Updated Review of the Diagnostic Methods in Delayed Drug Hypersensitivity. *Front Pharmacol*. 2020;11:573573. PubMed PMID: 33597867. PMCID: PMC7883592. Epub 2021/02/19.
23. regiscar
24. Kang DY, Yun J, Lee SY, Koh YI, Sim DW, Kim S, et al. Korean Severe Cutaneous Adverse Reactions Consortium. A Nationwide Study of Severe Cutaneous Adverse Reactions Based on the Multicenter Registry in Korea. *J Allergy Clin Immunol Pract*. 2021 Feb;9(2):929-936.e7. doi: 10.1016/j.jaip.2020.09.011. Epub 2020 Sep 19. PMID: 32961314.
25. Eldridge SM, Chan CL, Campbell MJ, Bond CM, Hopewell S, Thabane L, et al. CONSORT 2010 statement: extension to randomised pilot and feasibility trials. *BMJ*. 2016;355.
26. Kidney Disease: Improving Global Outcomes (KDIGO) Acute Kidney Injury Work Group. KDIGO clinical practice guideline for acute kidney injury. *Kidney Int*. 2012;2:1-138
27. Aithal GP, Watkins PB, Andrade RJ, Larrey D, Molokhia M, Takikawa H, et al. Case definition and phenotype standardization in drug-induced liver injury. *Clinical pharmacology and therapeutics*. 2011 Jun;89(6):806-15. PubMed PMID: 21544079.
28. Baiardini I, Braido F, Fassio O, Calia R, Giorgio WC, Romano A, et al. Development and validation of the Drug Hypersensitivity Quality of Life Questionnaire. *Annals of allergy, asthma & immunology : official publication of the American College of Allergy, Asthma, & Immunology*. 2011 Apr;106(4):330-5. PubMed PMID: 21457882.

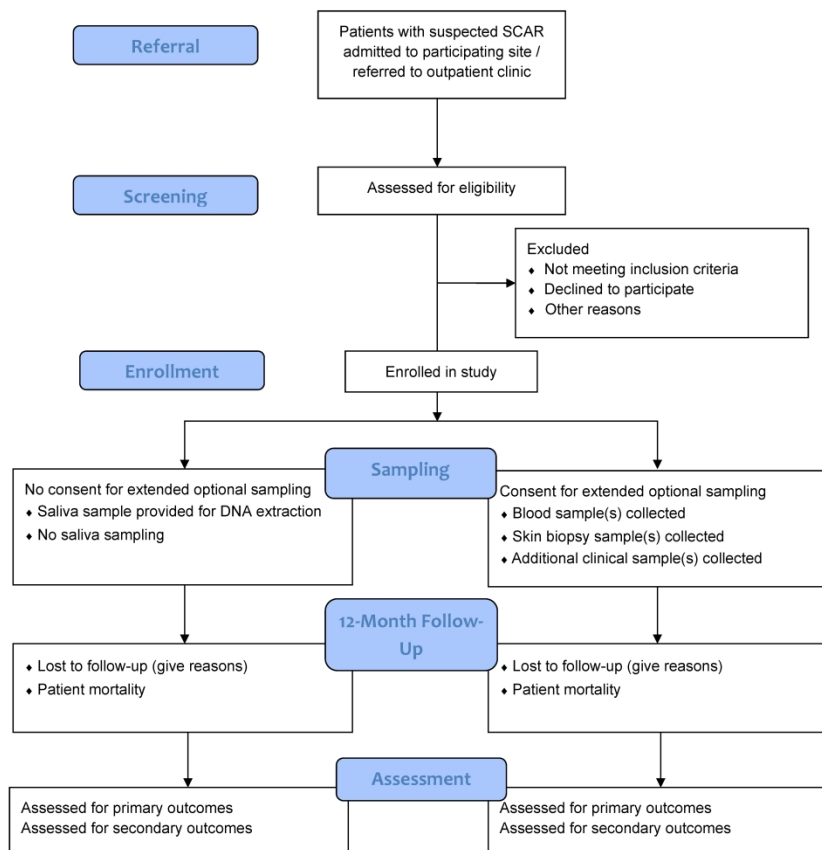


Figure 1. Overview of AUS-SCAR study design (adapted from Eldridge et al., 2010)²⁸

215x279mm (600 x 600 DPI)

SUPPLEMENTARY MATERIALS

Supplementary Table 1. SCAR phenotype-specific criteria for Drug reaction with eosinophilia and systemic symptoms (DRESS). RegiSCAR scoring system (8, 22). Inclusion of cases with drug reaction with eosinophilia and systemic symptoms (DRESS) requires a RegiSCAR score of ≥ 4 and hospitalisation.

RegiSCAR Item		Present		Absent
Fever $\geq 38.5^{\circ}\text{C}$ (101.3°F)		0		-1
Enlarged lymph nodes (>1 cm size, at least two sites)		1		0
Eosinophilia: ≥ 700 or ≥ 10 percent (leucopenia)	≥ 1500 or ≥ 20 percent (leucopenia)	1	2	0
Atypical lymphocytes		1		0
Rash ≥ 50 percent of body surface area		1		0
Rash suggestive (≥ 2 of facial edema, purpura, infiltration, desquamation)		1		0
Skin biopsy suggesting alternative diagnosis		-1		0
Organ involvement: one	two or more	1	2	0
Disease duration >15 days		0		-2
Investigation for alternative cause (blood cultures, ANA, serology for Hepatitis viruses, mycoplasma, Chlamydia) ≥ 3 done and negative		1		0

Supplementary Table 2. SCAR phenotype-specific criteria for Acute generalized exanthematous pustulosis (AGEP). AGEP validation score, EuroSCAR group (23). Inclusion of cases with acute generalised exanthematous pustulosis (AGEP) requires an AGEP score of ≥ 5 .

Morphology	Score
Pustules	
Typical*	+2
Compatible**	+1
Insufficient***	0
Erythema	1
Typical*	
Compatible**	
Insufficient***	
Distribution/patter	1
Typical*	
Compatible**	
Insufficient***	
Post pustular desquamation	1
Yes	
No/insufficient	
Course	
Mucosal involvement	
Yes	-2
No	0
Acute onset (≤ 10 days)	
Yes	0
No	-2
Resolution	

Yes	0
No	-4
Fever ≥ 38	
Yes	+1
No	0
PMN $\geq 7000/\text{mm}^3$	
Yes	+1
No	0
Histology	
Other disease	-10
Not representative/no histology	0
Exocytosis of PMN	+1
Subcorneal and/or intraepidermal non-spongiform or NOS ¹ 2 pustule(s) with papillary oedema or subcorneal and/or intraepidermal spongiform or NOS pustule(s) without papillary oedema (NOS ¹ 2 not otherwise specified)	+2
Spongiform subcorneal and/or intraepidermal pustule(s) ¹ 3 with papillary edema	+3

Supplementary Table 3. Schedule of assessments during study period.

Schedule of Assessments			
Procedure	Visit	Timeline	Volume
Part 1: DNA	Acute admission / outpatient visit	Acute	Saliva sample or additional 9mls blood
Part 2: Blood draws	Acute or follow-up admission / outpatient visit	Acute / convalescent	$\leq 150\text{mls}$ blood (adults) OR $\leq 50\text{ml}$ (aged 12 – 18 years)
Part 2: Skin sample	Acute admission / outpatient visit	Acute / convalescent	3-4mm punch biopsy
Part 2: Blister fluid	Acute admission	Acute	Any amount
Part 2: Other relevant fluid samples (eg. CSF, urine, LN aspirate)	Acute or follow-up admission / outpatient visit	Acute / convalescent	Any amount
Part 3: Patient survey	Follow-up phone call / electronic mail-out	12 months post SCAR onset (convalescent)	N/A

Drug Hypersensitivity Quality of Life Questionnaire (DrHy-Q)

To be performed at 12 months post onset of rash. Assessment should be performed over the phone by a study investigator or via an online tool (REDCap) if they prefer.

If the patient doesn't speak English:

1. Prior to calling all patients, extract the data from the medical record as outlined above. During the medical record review, check Emergency Department presentation notes medical record to determine whether an interpreter was needed during any episodes.
 - a. If an interpreter was needed during the episode, the telephone interview should be undertaken with the assistance of an interpreter.
 - b. If an interpreter was not used during hospital episodes, but a family member was involved with the patient's care due to a language barrier, contact this person to determine whether a suitable time can be set up to invite the patient to participate.
2. If a potential language barrier is not identified in the episode notes, telephone the patient as outlined below. If during the telephone call, it is apparent that an interpreter is needed, attempt to explain to the patient that you will organise an interpreter to assist with the conversation or ask to speak with an English-speaking family member.
3. If a family member or professional telephone interpreter assists with the interview, note this on the data collection form and the scanned medical record.

Verbal consent script for patients discharged from hospital identified from AUS-SCAR database.

"Hello could I please speak to (patient's full given name and surname)?"

Hello, I am _____, a nurse or doctor at the _____ Hospital.

Before we proceed, can I please confirm your full name, your date of birth and address?

We are doing an audit to see how your health is following a recent episode of an adverse reaction you had to a medication and managed at _____ Hospital. If you agree to be involved, we will ask you some questions about yourself. Usually the interview takes about 10 minutes.

We initially obtained your consent to contact you for this survey and this will be your final involvement in the study.

If you would prefer we can email you a link to a safe online version of the questions for you to answer in your own time.

If patient is not home:

"Is there a time that I could call back to speak with (patient's name)?"

If the patient is busy:

"Is there another time that I could call back that would be convenient?"

Questions:

1. "Would you consider yourself allergic to any drugs?"
 - a. **If Yes** – "Could you please list them?"
2. "Did you have any allergy testing performed after your discharge from hospital"?
 - a. **If Yes** – "Do you know the results?"
3. "Did you receive a medical alert letter or card on discharge from the hospital"?
 - a. **If Yes** – "What is listed on this?"
4. "Have you had any recurrent rashes to drugs since discharge from hospital"?
 - a. **If Yes** – "Could you please list the drugs and describe the reactions"

Phenotype-specific questions

- 1
 - 2
 - 3
 - 4
 - 5
 - 6
 - 7
 - 8
 - 9
 - 10
 - 11
 - 12
 - 13
 - 14
 - 15
 - 16
 - 17
 - 18
 - 19
 - 20
 - 21
 - 22
 - 23
 - 24
 - 25
 - 26
 - 27
 - 28
 - 29
 - 30
 - 31
 - 32
 - 33
 - 34
 - 35
 - 36
 - 37
 - 38
 - 39
 - 40
 - 41
 - 42
 - 43
 - 44
 - 45
 - 46
 - 47
 - 48
 - 49
 - 50
 - 51
 - 52
 - 53
 - 54
 - 55
 - 56
 - 57
 - 58
 - 59
 - 60
5. **If antibiotic associated SCAR** - "Have you received any antibiotics since the antibiotic allergy testing was performed?" (if antibiotic associated SCAR)
- a. **If Yes** - "Could you tell me which antibiotics, what they were given for and if you had any reactions?"
 - b. **If Yes** - "Would you be happy with us contacting your general practitioner for these details?"
6. **If SJS or TEN** - "Do you have any ongoing issues with your eyes or vision?"
7. **If SJS or TEN** - "Do you have any ongoing issues of scarring or contractures?"
8. **If DRESS** - "Do you have any autoimmune problems since / after your reaction such as thyroid disease or diabetes"
- a. **If Yes** - "Diabetes" (Y/N), "Thyroid disease" (Y/N), "Lupus" (Y/N), "Other" (Y/N)

Drug Hypersensitivity Quality of Life Questionnaire (DrHy-Q) – as per previously published protocol (24) – Answer True or False

1. I would like an allergy doctor's opinion before taking drugs prescribed by other doctors
2. I feel different from others
3. Even a little discomfort is a problem for me
4. Since I am unable to take drugs every illness limits me more than other people
5. My allergy problems interfere with my sexual life
6. My family and partner are aware of my allergy problem
7. I am afraid of being administered a drug during an emergency to which I am allergic
8. For each infection I would be confident that there is a drug that I can take safely
9. I feel anxious due to my allergy reaction
10. I worry every time I take a drug different from ones that cause my allergic reactions
11. The idea of taking a medicine makes me feel anxious
12. My family doctor is aware of my adverse drug reaction
13. Experiencing an adverse reaction to drugs affects my life
14. I feel anguished due to my problem of allergy reaction
15. I am afraid I could not deal with the pain
16. I've given up leisure activities (sport, vacations, trips) because of my problem
17. I'm in a bad mood due to my problem of allergy reaction

STROBE Statement—Checklist of items that should be included in reports of *cohort studies*

	Item No	Recommendation	Page No
Title and abstract	1	(a) Indicate the study's design with a commonly used term in the title or the abstract	1
		(b) Provide in the abstract an informative and balanced summary of what was done and what was found	2
Introduction			
Background/rationale	2	Explain the scientific background and rationale for the investigation being reported	2,3
Objectives	3	State specific objectives, including any prespecified hypotheses	3
Methods			
Study design	4	Present key elements of study design early in the paper	3
Setting	5	Describe the setting, locations, and relevant dates, including periods of recruitment, exposure, follow-up, and data collection	3-6
Participants	6	(a) Give the eligibility criteria, and the sources and methods of selection of participants. Describe methods of follow-up	3-6
		(b) For matched studies, give matching criteria and number of exposed and unexposed	NA
Variables	7	Clearly define all outcomes, exposures, predictors, potential confounders, and effect modifiers. Give diagnostic criteria, if applicable	7,11-12
Data sources/measurement	8*	For each variable of interest, give sources of data and details of methods of assessment (measurement). Describe comparability of assessment methods if there is more than one group	4-8
Bias	9	Describe any efforts to address potential sources of bias	2
Study size	10	Explain how the study size was arrived at	7
Quantitative variables	11	Explain how quantitative variables were handled in the analyses. If applicable, describe which groupings were chosen and why	7
Statistical methods	12	(a) Describe all statistical methods, including those used to control for confounding	7
		(b) Describe any methods used to examine subgroups and interactions	NA
		(c) Explain how missing data were addressed	NA
		(d) If applicable, explain how loss to follow-up was addressed	NA
		(e) Describe any sensitivity analyses	NA
Results			
Participants	13*	(a) Report numbers of individuals at each stage of study—eg numbers potentially eligible, examined for eligibility, confirmed eligible, included in the study, completing follow-up, and analysed	NA
		(b) Give reasons for non-participation at each stage	NA
		(c) Consider use of a flow diagram	NA
Descriptive data	14*	(a) Give characteristics of study participants (eg demographic, clinical, social) and information on exposures and potential confounders	NA
		(b) Indicate number of participants with missing data for each variable of interest	NA
		(c) Summarise follow-up time (eg, average and total amount)	NA
Outcome data	15*	Report numbers of outcome events or summary measures over time	NA

1	Main results	16	(a) Give unadjusted estimates and, if applicable, confounder-adjusted estimates and their precision (eg, 95% confidence interval). Make clear which confounders were adjusted for and why they were included	NA
2			(b) Report category boundaries when continuous variables were categorized	NA
3			(c) If relevant, consider translating estimates of relative risk into absolute risk for a meaningful time period	NA
4				
5				
6				
7				
8				
9	Other analyses	17	Report other analyses done—eg analyses of subgroups and interactions, and sensitivity analyses	NA
10				
11	Discussion			
12				
13	Key results	18	Summarise key results with reference to study objectives	NA
14	Limitations	19	Discuss limitations of the study, taking into account sources of potential bias or imprecision. Discuss both direction and magnitude of any potential bias	NA
15				
16	Interpretation	20	Give a cautious overall interpretation of results considering objectives, limitations, multiplicity of analyses, results from similar studies, and other relevant evidence	NA
17				
18				
19	Generalisability	21	Discuss the generalisability (external validity) of the study results	NA
20				
21	Other information			
22	Funding	22	Give the source of funding and the role of the funders for the present study and, if applicable, for the original study on which the present article is based	8
23				
24				

*Give information separately for exposed and unexposed groups.

Note: An Explanation and Elaboration article discusses each checklist item and gives methodological background and published examples of transparent reporting. The STROBE checklist is best used in conjunction with this article (freely available on the Web sites of PLoS Medicine at <http://www.plosmedicine.org/>, Annals of Internal Medicine at <http://www.annals.org/>, and Epidemiology at <http://www.epidem.com/>). Information on the STROBE Initiative is available at <http://www.strobe-statement.org>.