

BMJ Open Study protocol: Australasian Registry of Severe Cutaneous Adverse Reactions (AUS-SCAR)

Fiona James ¹, Michelle S Y Goh,^{2,3} Effie Mouhtouris,¹ Sara Vogrin,⁴ Kyra Y L Chua,¹ Natasha E Holmes,^{1,4} Andrew Awad,¹ Ana-Maria Copaescu ¹, Joseph F De Luca ¹, Celia Zubrinich,^{5,6} Douglas Gin,⁷ Heather Cleland,⁸ Abby Douglas,⁹ Johannes S Kern,^{4,10} Constance H Katelaris,¹¹ Francis Thien,^{12,13} Sara Barnes,¹⁴ James Yun,¹⁵ Winnie Tong,^{16,17} William B Smith,¹⁸ Andrew Carr,¹⁶ Tara Anderson,¹⁹ Amy Legg,²⁰ Jack Bourke,²¹ Laura K Mackay,²² Ar Kar Aung,²³ Elizabeth J Phillips,^{24,25} Jason Trubiano ^{1,4,26}

To cite: James F, Goh MSY, Mouhtouris E, *et al.* Study protocol: Australasian Registry of Severe Cutaneous Adverse Reactions (AUS-SCAR). *BMJ Open* 2022;**12**:e055906. doi:10.1136/bmjopen-2021-055906

► Prepublication history and additional supplemental material for this paper are available online. To view these files, please visit the journal online (<http://dx.doi.org/10.1136/bmjopen-2021-055906>).

Received 02 August 2021
Accepted 27 July 2022



© Author(s) (or their employer(s)) 2022. Re-use permitted under CC BY-NC. No commercial re-use. See rights and permissions. Published by BMJ.

For numbered affiliations see end of article.

Correspondence to

Fiona James;
Fiona.JAMES@austin.org.au

ABSTRACT

Introduction Severe cutaneous adverse reactions (SCAR) are a group of T cell-mediated hypersensitivities associated with significant morbidity, mortality and hospital costs. Clinical phenotypes include Stevens-Johnson syndrome (SJS), toxic epidermal necrolysis (TEN), drug reaction with eosinophilia and systemic symptoms (DRESS) and acute generalised exanthematous pustulosis (AGEP). In this Australasian, multicentre, prospective registry, we plan to examine the clinical presentation, drug causality, genomic predictors, potential diagnostic approaches, treatments and long-term outcomes of SCAR in Australia and New Zealand.

Methods and analysis Adult and adolescent patients with SCAR including SJS, TEN, DRESS, AGEP and another T cell-mediated hypersensitivity, generalised bullous fixed drug eruption, will be prospectively recruited. A waiver of consent has been granted for some sites to retrospectively include cases which result in early mortality. DNA will be collected for all prospective cases. Blood, blister fluid and skin biopsy sampling is optional and subject to patient consent and site capacity. To develop culprit drug identification and prevention, genomic testing will be performed to confirm human leukocyte antigen (HLA) type and ex vivo testing will be performed via interferon-γ release enzyme linked immunospot assay using collected peripheral blood mononuclear cells. The long-term outcomes of SCAR will be investigated with a 12-month quality of life survey and examination of prescribing and mortality data.

Ethics and dissemination This study was reviewed and approved by the Austin Health Human Research Ethics Committee (HREC/50791/Austin-19). Results will be published in peer-reviewed journals and presented at relevant conferences.

Trial registration number Australian New Zealand Clinical Trials Registry (ACTRN12619000241134).

INTRODUCTION

Severe cutaneous adverse reactions (SCAR) are a group of T cell-mediated

STRENGTHS AND LIMITATIONS OF THIS STUDY

- ⇒ The strength of Australasian registry of Severe Cutaneous Adverse Reactions lies in its prospective design, allowing for the real-time collection of clinical data, standardised investigation and sampling for genomic evaluation and ex vivo diagnostics.
- ⇒ There will likely be selection bias favouring the recruitment of adults, less critically ill patients, patients living in metropolitan areas where the majority of study sites are located and patients whose first language is English.
- ⇒ A limitation of the sampling strategy is the large blood volume required due to the number of peripheral blood mononuclear cells (PBMCs) required for successful enzyme linked immunospot assay, complicated by the often poor viability of cells from acute bleeds due to critical illness. Many hospital-adjacent laboratories are also not set up to process PBMCs, blister fluid or skin specimens requiring same-day transport to specialised research labs.
- ⇒ Selection bias is also likely to affect the sampling strategy as treating teams may be less willing to overburden children and critically ill patients.
- ⇒ Finally, the registry is not designed to achieve complete case capture across the study period and recruiting the target sample size will be dependent on successful recognition of cases at each site.

hypersensitivities—including Stevens-Johnson syndrome (SJS), toxic epidermal necrolysis (TEN), drug reaction with eosinophilia and systemic symptoms (DRESS) and acute generalised exanthematous pustulosis (AGEP).¹ Other severe T cell-mediated hypersensitivities include diseases such as generalised bullous fixed drug eruption (GBFDE), drug-induced liver injury (DILI) and acute interstitial nephritis (AIN).^{1 2} SCAR can be associated with significant morbidity, hospital costs, increased demand for specialist testing

and high mortality.^{3–6} Despite this, an understanding of the clinical, genomic and pharmacological predictors of each phenotype remains absent from current practice. Further, there is currently a lack of consistency among the recommendations in treatment guidelines for these severe reactions.

Causality assessment in SCAR is often complex as multiple drugs are frequently involved.^{3 7–9} While the use of skin testing (in vivo) has been increasingly employed, it is hampered by low sensitivity and concerns around safety.^{10–12} Progress has been made in understanding the underlying immune mechanisms and genetic predisposition of SCAR,¹³ providing strong support for the role of human leukocyte antigen (HLA) typing in identifying specific drug-associated reactions (eg, HLA-B*57:01 for abacavir hypersensitivity, HLA-B*58:01 for allopurinol hypersensitivity).^{14 15} Further association studies are required, however, to capitalise on this knowledge and previously provided roadmap. The use of novel ex vivo T-cell diagnostics to aid drug causality assessment, including lymphocyte transformation testing (LTT) and interferon- γ enzyme linked immunospot (ELISpot) assay, has been used with some success in a research setting but their clinical utility is not yet established.^{12 16–22}

The long-term outcomes of SCAR including quality of life, disease recurrence, inadvertent drug re-exposure and medication safety are not well-described. The development of a regional clinical and DNA registry of SCAR will allow investigators to (a) perform surveillance for new and emerging drug causality, (b) develop causality and phenotypic prediction rules, (c) understand best-practice treatment approaches, (d) discover genomic predictors that prevent SCAR onset and (e) improve long-term outcomes and medication safety. The additional biospecimen component of the study will allow investigators to assess the utility of T-cell diagnostics in aiding drug causality. While national SCAR registries have been set up successfully in Europe (RegiSCAR) and Korea (KoSCAR),^{23 24} Australasian Registry of Severe Cutaneous Adverse Reactions (AUS-SCAR) will be the first registry of severe drug allergy in the Australasian region.

METHODS AND ANALYSIS

AUS-SCAR is an Australasian, multicentre, prospective registry of severe cutaneous adverse reactions in adults and adolescents >12 years of age. Participating sites for recruitment include Austin Health, Alfred Health, Eastern Health, Peter MacCallum Cancer Centre, St Vincent's Hospital Melbourne, Monash Health, Royal Melbourne Hospital, Epworth Healthcare, Campbelltown Hospital, Nepean Hospital, St Vincent's Hospital Sydney, Fiona Stanley Hospital, Sir Charles Gairdner Hospital, Royal Brisbane and Women's Hospital, Queensland Children's Hospital, Royal Adelaide Hospital, Flinders Medical Centre, Royal Darwin Hospital, Launceston General Hospital and Auckland City Hospital. The Peter Doherty Institute for Infection and Immunity and Institute for

Immunology and Infectious Diseases (IIID) are collaborating sites for sample analysis. Recruitment commenced in July 2019 and is planned to continue across all sites until accrual has reached n=500.

Study oversight

A 5–7 person Steering Committee will be formed following nominations from participating site principal investigators. Steering Committee members will meet regularly to discuss the direction of the project, assess requests from investigators and identify any potential risks or issues. The chair of the Steering Committee will be the chief investigator. A Steering Committee member can step down from this role at any time and nominations for a new member will be sought from participating site principal investigators. The Steering Committee should have at least one of the following at all times: infectious diseases physician, allergist/immunologist and dermatologist.

The clinical and DNA database and results of the study are the common property of AUS-SCAR investigators and cannot be used without the formal authorisation of the Steering Committee. The release of results at conference proceedings, meetings and/or in publication are decided on by the Steering Committee of AUS-SCAR.

Project development

Any principal investigator can propose a project using AUS-SCAR data. This proposal will be forwarded to all investigators for comment and the Steering Committee will provide (a) feedback to the proposing investigator and (b) approval/non-approval of the project.

Patient involvement

Although they have not been involved in the study design, patients will be invited to assist with identifying the best methods of disseminating results to patients and the public following publication. Patients or consumer representatives may also be considered for inclusion in the Steering Committee.

Participants

Patients will be invited to participate in the registry if (a) they are admitted to or referred to a participating site with a suspected SCAR, (b) two site investigators have agreed on inclusion, (c) SCAR is confirmed by a site dermatologist or immunologist or is biopsy proven and (d) the SCAR phenotype is consistent with disease-specific criteria and alternative diagnoses have been ruled out. Disease-specific criteria for SJS/TEN includes the presence of widespread erythema with skin detachment and more than one blister; patients with a suspected viral trigger will still be included if they meet eligibility criteria and case validation. For GBFDE, there must be multifocal, widespread, bullous-type fixed drug eruption characterised by sharply defined bullae at site of recurrent drug administration. Criteria for DRESS and AGEP are outlined in online supplemental table 1 and 2, respectively. The study design and biospecimen sampling schedule are outlined in figure 1.²⁵

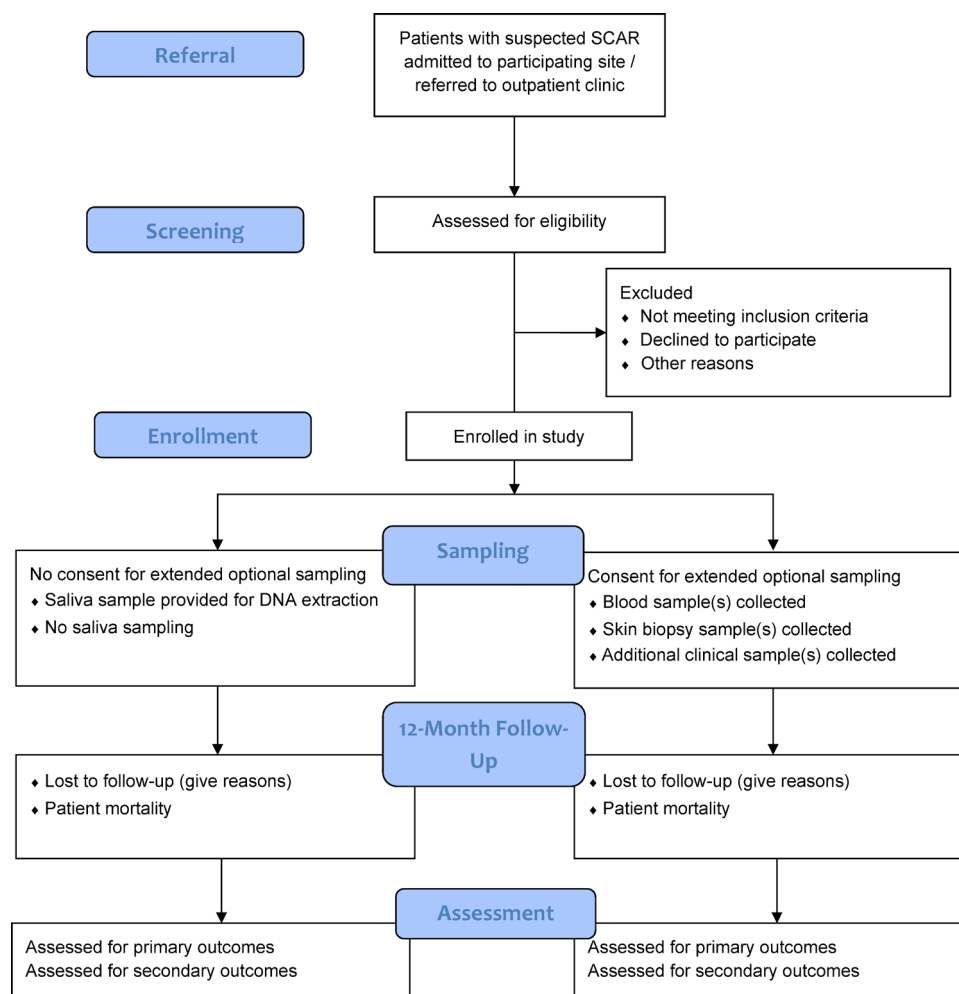


Figure 1 Overview of Australasian Registry of Severe Cutaneous Adverse Reactions study design (adapted from Eldridge *et al*²⁵). SCAR, severe cutaneous adverse reactions.

At a later stage of the project, extended recruitment may include the following phenotypes, following approval by >50% of principal investigators and the Project Steering Committee:

1. AIN: required hospitalisation and biopsy proven with acute kidney injury (increase in serum creatinine by ≥ 0.3 mg/dL within 48 hours or increase in serum creatinine to ≥ 1.5 times baseline within 7 days or urine output < 0.5 mL/kg/hour for 6 hours)²⁶ with other common causes excluded. Non-biopsy proven cases with a single implicated drug, urinary and peripheral eosinophilia, acute kidney injury and resolution of renal disease postdrug removal can be included.
2. DILI: required hospitalisation and biopsy proven with $\geq 5 \times$ upper limit of normal (ULN) for alanine aminotransferase (ALT) or ≥ 2 ULN for ALP, or ≥ 3 ULN for ALT with bilirubin ≥ 2 ULN.²⁷ Non-biopsy proven cases with a single implicated drug, acute liver injury, autoimmune and other causes excluded and resolution of liver disease postdrug removal can be included.
3. FDE: dermatologist confirmed, well-defined, circular, hyper-pigmented single or a few plaques that recur

in fixed locations on ingestion of drug (therefore requires two or more occurrences).

Biospecimen collection and analysis

Part 1: clinical data and DNA collection

Following informed consent, baseline patient demographics, medical history and clinical data including histopathology and clinical photography will be collected from the patient and medical record and entered into a secure REDCap database. Consent may be obtained from the patient, parent/guardian or medical treatment decision-maker, as appropriate and subject to local or national law. A waiver of consent has been obtained for some participating institutions to collect clinical data retrospectively for patients that die prior to obtaining informed consent.

DNA will be collected for all patients enrolled prospectively: this will be extracted from saliva for patients who do not consent to additional sample collection or from whole blood or peripheral blood mononuclear cells (PBMCs) for patients who agree to additional blood collection. The HLA testing process at the Institute for Immunology and Infectious Diseases (IIID) in Perth Western Australia is accredited by the American Society for Histocompatibility

and Immunogenetics (ASHI) and the National Association of Testing Authorities (NATA). Specific HLA Loci will be PCR amplified using sample specific MID-tagged primers that amplify polymorphic exons from Class I (A, B, C Exons 2 and 3) and Class II (DQ, Exons 2 and 3; DRB and DPB1, Exon 2) MHC genes. MID tagged primers have been optimised to minimize allele dropouts and primer bias. Amplified DNA products from unique MID tagged products (up to 96 MIDs) will be pooled in equimolar ratios and subjected to library preparation using NEBNext Ultra II library prep kits (New England Biolabs). Libraries will be quantified using the JetSeq library quantitation kit (Meridian Bioscience) and High sensitivity D1000 screen-tape on an Agilent 2200 TapeStation (Agilent) for concentration and size distribution. Normalised libraries will then be sequenced on the Illumina MiSeq platform using the MiSeq V3 600-cycle kit (2X300bp reads). Sequences will be separated by MID tags and alleles called using an in house accredited HLA allele caller software pipeline that minimises the influence of sequencing errors. Alleles are called using the latest IMGT HLA allele database as the allele reference library. Sample to report integrity will be tracked and checked using proprietary and accredited Laboratory Information and Management System (LIMS) and HLA analyse reporting software that performs comprehensive allele balance and contamination checks on the final dataset. Further Genome Wide Association Studies, RNA-seq and virological assessment may be performed on stored DNA samples to determine if genetic and viral variants are associated with SCAR phenotype.

Part 2: additional biospecimen collection

This part of the study is *optional for participating sites and for patients*. Samples will need to be stored at the participating site or at a collaborating AUS-SCAR site if there is capacity. Informed consent must be obtained for all samples requested. The sampling schedule is outlined below and in online supplemental table 3.

Blood

For adults, an initial blood sample of 100–150mL will be taken following informed consent. A reduced blood volume of 20–50mL is taken for patients under 18 years of age. A convalescent follow-up blood draw of the same volume will be taken at 6 weeks to 12 months post-SCAR onset for consenting patients. Repeat blood draws may be requested at both time points if the full volume was unable to be collected or cell viability is poor, subject to ongoing patient consent.

Skin biopsy

A 3–4mm punch biopsy may be taken from an affected area at the acute stage and 6 weeks to 12 months post-SCAR onset. For a subset of patients, repeat biopsies may be requested for comparison studies.

Blister fluid

For patients with blisters present, blister fluid of any volume may be collected into a heparinised tube for the extraction

of PBMCs. For patients whose blisters reform, additional fluid collection may be requested.

Additional clinical samples

Additional clinical samples may be collected if considered to be of potential clinical relevance by the site investigator (eg, cerebrospinal fluid, lymph node aspirate).

Sample processing

PBMCs will be isolated from blood and blister fluid and stored at -80°C, to be utilised for DNA extraction and immunological studies such as IFN- γ release enzyme-linked immunosorbent spot (ELISpot) assay¹², flow cytometry and alternative *ex vivo* diagnostics. Plasma will be separated from blood samples during the PBMC isolation process and stored at -80°C. Skin biopsy and clinical samples may be stored and processed for exploratory immunological studies. Samples are to be processed and stored at participating sites (or a collaborating AUS-SCAR site on request from participating site) and cannot be used in AUS-SCAR studies without written approval from the participating site. The participating site can choose to use these samples for any research project they have additional local ethics approval for, without consent required from AUS-SCAR investigators. The Doherty Institute for Infection and Immunity or IID are available for assistance with sample processing where possible.

Part 3: patient follow-up

A 12-month follow-up will be performed to collect data regarding (a) drug utilisation, (b) health outcomes and (c) quality of life (online supplemental materials). Whether the patient received a referral for further allergy/immunology evaluation (left to the discretion of the treating team) and the results of any allergy testing performed will be captured. Mortality/morbidity and prescribing data will be extracted from the medical record. For available patients, a quality of life assessment will be performed using the previously validated and adapted Drug Hypersensitivity Quality of Life Questionnaire (DrHy-Q).²⁸ A telephone script is provided with the DrHy-Q in online supplemental materials. The questionnaire may also be sent out via email. Prescribing and mortality data may be obtained from the Pharmaceutical Benefits Scheme (PBS) following approval or the participant's general practitioner (GP) where not available from the medical record or patient.

Study aims

- ▶ To develop a national registry of SCAR to ensure continuous surveillance of new and emerging causative drugs and improve pharmacovigilance.
- ▶ To describe the causality and epidemiology of SCAR in Australasia.
- ▶ To determine patient, drug and clinical factors that predict SCAR phenotypes and which treatments improve outcomes.
- ▶ To determine the treatments employed for SCAR in Australasia and describe patient outcomes.

- ▶ To determine pharmacogenomic and genomic associations in SCAR.
- ▶ To examine the long-term impacts of SCAR including restricted medication use and quality of life (QOL) impact.

Primary outcome measures

- ▶ Proportion (n, %) of SCAR secondary to antibiotics or non-antibiotics (addressed using the most likely implicated drug as determined through internal and external validation).
 - Proportion (n, %) for each drug class.

Secondary outcome measures

- ▶ Proportion (n, %) of SCAR treated with a potentially disease-modifying therapy.
 - Proportion (n, %) for each treatment type, for example, topical or systemic corticosteroids, intravenous immunoglobulin, immunomodulators (eg, rituximab), antivirals (eg, ganciclovir).
 - For each treatment type: length-of-stay (days), inpatient mortality, all-cause mortality (90 days, 12 months), disease recurrence.
- ▶ Proportion (n, %) of SCAR referred for in vivo/ex vivo allergy testing.
 - Proportion (n, %) of each testing modality: patch testing, intradermal testing, ex vivo (LTT, ELISpot, other).
 - Proportion (n, %) positive on skin testing.
- ▶ For each SCAR phenotype: proportion (n, %) associated with inpatient and 12-month mortality.
- ▶ For each SCAR phenotype: proportion (n, %) associated with relapse or drug re-exposure within 12 months.
- ▶ Risk factors associated with development of each SCAR phenotype.
 - Patient (host factors), drug (pharmacological class), clinical (disease factors).
- ▶ Risk factors associated with SCAR mortality.
 - Patient (host factors), drug (pharmacological class), disease (phenotype).
- ▶ For each SCAR phenotype and implicated drug: Genomic associations within HLA class I and/or II.
- ▶ Utility of in vitro/ex vivo diagnostics in assigning drug causality in SCAR.
- ▶ The long-term sequelae of SCAR.

Sample size

Due to the registry study design, a sample size calculation is not required. The projected recruitment number over a 5-year period is 500 (80 cases are estimated over 5 years at a single institution³—allowing for 35% minimum case capture at 20 sites, the extrapolated numbers are 560 over this period).

Statistical analysis

Statistical analysis using Stata Statistical Software: Release 16 (College Station, TX: StataCorp LLC.) will be performed by study investigators with the assistance

of a biostatistician as required. Categorical variables will be summarised using frequency and percentage and compared using a χ^2 test or Fisher's exact test. Continuous variables will first be assessed for significant skew using a Shapiro-Wilk test. They will then be summarised using mean and SD or median and IQR as appropriate and compared using a t-test or Wilcoxon signed-rank/Mann-Whitney U test. Multivariable logistic regression modelling will be used to examine secondary objectives related to variables/factors predicting specified outcomes.

ETHICS AND DISSEMINATION

This study was registered on 19 February 2019 and received ethical approval from the Austin Health Human Research Ethics Committee (HREC Number HREC/50791/Austin-19) in May 2019.

An initial publication of pilot data is planned after the recruitment of 100 patients. Patient demographics, SCAR phenotype, implicated drugs, ELISpot and HLA results will be included. Principal investigators from each participating site will be included as authors. Authorship will be guided by the Project Steering Committee with reference to the International Committee of Medical Journal Editors guidelines.

Further results of this research project are planned to be published and/or presented in a variety of scientific forums and journals. The data presented will explore SCAR epidemiology in Australasia, drug causality, genomic predictors, diagnostic tools and potential treatments.

Author affiliations

¹Centre for Antibiotic Allergy & Research, Department of Infectious Diseases, Austin Health, Heidelberg, Victoria, Australia

²Department of Dermatology, St Vincent's Hospital Melbourne Pty Ltd, Fitzroy, Victoria, Australia

³Department of Dermatology, Alfred Health, Melbourne, Victoria, Australia

⁴Department of Medicine, The University of Melbourne, Melbourne, Victoria, Australia

⁵Allergy, Asthma & Clinical Immunology, Alfred Health, Melbourne, Victoria, Australia

⁶School of Public Health and Preventive Medicine, Monash University, Clayton, Victoria, Australia

⁷Department of Dermatology, Alfred Hospital, Melbourne, Victoria, Australia

⁸Victorian Adult Burns Service, Alfred Hospital, Melbourne, Victoria, Australia

⁹Infectious Diseases and Infection Control, Peter MacCallum Cancer Centre, Melbourne, Victoria, Australia

¹⁰Dermatology Department, The Royal Melbourne Hospital, Melbourne, Victoria, Australia

¹¹Department of Immunology, Campbelltown Hospital, Campbelltown, New South Wales, Australia

¹²Eastern Health Clinical School, Monash University, Clayton, Victoria, Australia

¹³Department of Respiratory and Sleep Medicine, Eastern Health, Box Hill, Victoria, Australia

¹⁴Monash Lung Sleep Allergy and Immunology, Monash Health, Clayton, Victoria, Australia

¹⁵Immunology and Rheumatology, Nepean Hospital, Penrith, New South Wales, Australia

¹⁶HIV & Immunology, St Vincent's Hospital Sydney, Darlinghurst, New South Wales, Australia

¹⁷School of Clinical Medicine, St Vincent's Healthcare Clinical Campus, Faculty of Medicine and Health, UNSW, Sydney, New South Wales, Australia

¹⁸Clinical Immunology and Allergy, Royal Adelaide Hospital, Adelaide, South Australia, Australia

¹⁹Department of Infectious Diseases, Royal Hobart Hospital, Hobart, Tasmania, Australia

²⁰Pharmacy Department, Royal Darwin Hospital, Casuarina, Northern Territory, Australia

²¹Department of Immunology, Fiona Stanley Hospital, Murdoch, Western Australia, Australia

²²Department of Microbiology and Immunology, The University of Melbourne at The Peter Doherty Institute for Infection and Immunity, Melbourne, Victoria, Australia

²³Department of General Medicine, Alfred Hospital, Melbourne, Victoria, Australia

²⁴Institute for Immunology and Infectious Diseases, Murdoch University, Murdoch, Western Australia, Australia

²⁵Departments of Medicine, Dermatology, Pathology, Microbiology, Immunology and Pharmacology, Vanderbilt University Medical Center, Nashville, Tennessee, USA

²⁶National Centre for Infections in Cancer, Peter MacCallum Cancer Centre, Melbourne, Victoria, Australia

Twitter Ana-Maria Copăescu @AnaCopaescu and Jason Trubiano @TrubianoJason

Acknowledgements EJP reports grants R01HG010863, R01AI152183, U01AI154659, R13AR078623, UAI109565) from the National Institutes of Health and additional funding from the National Health and Medical Research Council of Australia. She is co-director of IIID Pty Ltd that holds a patent for HLA-B*57:01 testing for abacavir hypersensitivity, and has a patent pending for Detection of Human Leukocyte Antigen-A*32:01 in connection with Diagnosing Drug Reaction with Eosinophilia and Systemic Symptoms without any financial remuneration and not directly related to the submitted work. EJP receives consulting fees and royalties from UpToDate and consulting fees from Janssen, AstraZeneca, Regeneron, Verve and Biocryst.

Contributors FJ is the project manager and corresponding author, responsible for providing central operational oversight of the study. JT, EJP, JY, MSYG, WT, CZ, DG and CK contributed to the initial design of the study and drafting of the protocol. FJ, MSYG, EM, SV, KC, NEH, AA, A-MC, JFDL, CZ, DG, HC, AD, JK, CK, FT, SB, JY, WT, WS, AC, TA, AL, JB, LM, AKA, EJP and JT contributed to pilot data acquisition informing the study design and substantial revision of the manuscript. JT is the coordinating principal investigator, providing overall responsibility for the study. All authors have read and approved the final manuscript.

Funding This research was funded by the Allergy and Immunology Foundation of Australasia (AIFA) and the Faculty of Medicine, Dentistry and Health Sciences, The University of Melbourne (Grant numbers not applicable).

Competing interests None declared.

Patient and public involvement Patients and/or the public were not involved in the design, or conduct, or reporting, or dissemination plans of this research.

Patient consent for publication Not applicable.

Provenance and peer review Not commissioned; externally peer reviewed.

Supplemental material This content has been supplied by the author(s). It has not been vetted by BMJ Publishing Group Limited (BMJ) and may not have been peer-reviewed. Any opinions or recommendations discussed are solely those of the author(s) and are not endorsed by BMJ. BMJ disclaims all liability and responsibility arising from any reliance placed on the content. Where the content includes any translated material, BMJ does not warrant the accuracy and reliability of the translations (including but not limited to local regulations, clinical guidelines, terminology, drug names and drug dosages), and is not responsible for any error and/or omissions arising from translation and adaptation or otherwise.

Open access This is an open access article distributed in accordance with the Creative Commons Attribution Non Commercial (CC BY-NC 4.0) license, which permits others to distribute, remix, adapt, build upon this work non-commercially, and license their derivative works on different terms, provided the original work is properly cited, appropriate credit is given, any changes made indicated, and the use is non-commercial. See: <http://creativecommons.org/licenses/by-nc/4.0/>.

ORCID iDs

Fiona James <http://orcid.org/0000-0003-0469-5666>

Ana-Maria Copăescu <http://orcid.org/0000-0002-9183-5032>

Joseph F De Luca <http://orcid.org/0000-0001-6541-5512>

Jason Trubiano <http://orcid.org/0000-0002-5111-6367>

REFERENCES

- Konvinse KC, Phillips EJ, White KD, *et al.* Old dog Begging for new tricks: current practices and future directions in the diagnosis of delayed antimicrobial hypersensitivity. *Curr Opin Infect Dis* 2016;29:561–76.
- Duong TA, Valeyrie-Allanore L, Wolkenstein P, *et al.* Severe cutaneous adverse reactions to drugs. *Lancet* 2017;390:1996–2011.
- Trubiano JA, Aung AK, Nguyen M, *et al.* A comparative analysis between Antibiotic- and Nonantibiotic-Associated delayed cutaneous adverse drug reactions. *J Allergy Clin Immunol Pract* 2016;4:1187–93.
- Saka B, Barro-Traoré F, Atadokpédé FA, *et al.* Stevens-Johnson syndrome and toxic epidermal necrolysis in sub-Saharan Africa: a multicentric study in four countries. *Int J Dermatol* 2013;52:575–9. doi:10.1111/j.1365-4632.2012.05743.x
- Lin Y-F, Yang C-H, Sindy H, *et al.* Severe cutaneous adverse reactions related to systemic antibiotics. *Clin Infect Dis* 2014;58:1377–85.
- Su P, Aw CWD. Severe cutaneous adverse reactions in a local hospital setting: a 5-year retrospective study. *Int J Dermatol* 2014;53:1339–45. doi:10.1111/ijd.12118
- Kardaun SH, Sekula P, Valeyrie-Allanore L, *et al.* Drug reaction with eosinophilia and systemic symptoms (dress): an original multisystem adverse drug reaction. results from the prospective RegiSCAR study. *Br J Dermatol* 2013;169:1071–80. doi:10.1111/bjd.12501
- Rive CM, Bourke J, Phillips EJ. Testing for drug hypersensitivity syndromes. *Clin Biochem Rev* 2013;34:15–38.
- Blumenthal KG, Peter JG, Trubiano JA, *et al.* Antibiotic allergy. *Lancet* 2019;393:183–98.
- Phillips EJ, Bigliardi P, Bircher AJ, *et al.* Controversies in drug allergy: testing for delayed reactions. *J Allergy Clin Immunol* 2019;143:66–73.
- Trubiano JA, Douglas AP, Goh M, *et al.* The safety of antibiotic skin testing in severe T-cell-mediated hypersensitivity of immunocompetent and immunocompromised hosts. *J Allergy Clin Immunol Pract* 2019;7:1341–3.
- Trubiano JA, Strautins K, Redwood AJ, *et al.* The Combined Utility of Ex Vivo IFN- γ Release Enzyme-Linked ImmunoSpot Assay and In Vivo Skin Testing in Patients with Antibiotic-Associated Severe Cutaneous Adverse Reactions. *J Allergy Clin Immunol Pract* 2018;6:1287–96.
- White KD, Abe R, Ardern-Jones M, *et al.* SJS/TEN 2017: building multidisciplinary networks to drive science and translation. *J Allergy Clin Immunol Pract* 2018;6:38–69.
- Mallal S, Phillips E, Carosi G, *et al.* HLA-B*5701 screening for hypersensitivity to abacavir. *N Engl J Med* 2008;358:568–79. doi:10.1056/NEJMoa0706135
- Yun J, Marcaida MJ, Eriksson KK, *et al.* Oxypurinol directly and immediately activates the drug-specific T cells via the preferential use of HLA-B*58:01. *J Immunol* 2014;192:2984–93.
- Kano Y, Hirahara K, Mitsuyama Y, *et al.* Utility of the lymphocyte transformation test in the diagnosis of drug sensitivity: dependence on its timing and the type of drug eruption. *Allergy* 2007;62:1439–44.
- Porebski G. In vitro assays in severe cutaneous adverse drug reactions: are they still research tools or diagnostic tests already? *Int J Mol Sci* 2017;18. doi:10.3390/ijms18081737. [Epub ahead of print: 10 Aug 2017].
- Redwood A, Trubiano J, Phillips EJ. Prevention and diagnosis of severe T-cell-mediated adverse drug reactions: are we there yet? *J Allergy Clin Immunol Pract* 2019;7:228–30.
- Klaewsongram K, Sukasem C, Thantworasit P, *et al.* Analysis of HLA-B allelic variation and IFN- γ ELISpot responses in patients with severe cutaneous adverse reactions associated with drugs. *J Allergy Clin Immunol Pract* 2019;7:219–27.
- Pichler WJ. *Drug hypersensitivity: Karger publishers*, 2007.
- Copăescu A, Mouhtouris E, Vogrin S, *et al.* The Role of In Vivo and Ex Vivo Diagnostic Tools in Severe Delayed Immune-Mediated Adverse Antibiotic Drug Reactions. *J Allergy Clin Immunol Pract* 2021;9:2010–5.
- Copăescu A, Gibson A, Li Y, *et al.* An updated review of the diagnostic methods in delayed drug hypersensitivity. *Front Pharmacol* 2020;11:573573.
- Kardaun SH, Sekula P, Valeyrie-Allanore L, *et al.* Drug reaction with eosinophilia and systemic symptoms (DRESS): an original multisystem adverse drug reaction. Results from the prospective RegiSCAR study. *British Journal of Dermatology* 2013;169:1071–80.
- Kang DY, Yun J, Lee SY. Korean severe cutaneous adverse reactions Consortium. A nationwide study of severe cutaneous adverse reactions based on the multicenter registry in Korea. *J Allergy Clin Immunol Pract* 2021;9:929–36.

- 25 Eldridge SM, Chan CL, Campbell MJ, *et al*. Consort 2010 statement: extension to randomised pilot and feasibility trials. *BMJ* 2016;355:i5239.
- 26 Kidney disease: improving global outcomes (KDIGO) acute kidney injury work group. KDIGO clinical practice guideline for acute kidney injury. *Kidney Int* 2012;2:1–138.
- 27 Aithal GP, Watkins PB, Andrade RJ, *et al*. Case definition and phenotype standardization in drug-induced liver injury. *Clin Pharmacol Ther* 2011;89:806–15.
- 28 Baiardini I, Braido F, Fassio O, *et al*. Development and validation of the drug hypersensitivity quality of life questionnaire. *Ann Allergy Asthma Immunol* 2011;106:330–5.

SUPPLEMENTARY MATERIALS

Supplementary Table 1. SCAR phenotype-specific criteria for Drug reaction with eosinophilia and systemic symptoms (DRESS). RegiSCAR scoring system (8, 22). Inclusion of cases with drug reaction with eosinophilia and systemic symptoms (DRESS) requires a RegiSCAR score of ≥ 4 and hospitalisation.

RegiSCAR Item		Present		Absent
Fever $\geq 38.5^{\circ}\text{C}$ (101.3°F)		0		-1
Enlarged lymph nodes (>1 cm size, at least two sites)		1		0
Eosinophilia: ≥ 700 or ≥ 10 percent (leucopenia)	≥ 1500 or ≥ 20 percent (leucopenia)	1	2	0
Atypical lymphocytes		1		0
Rash ≥ 50 percent of body surface area		1		0
Rash suggestive (≥ 2 of facial edema, purpura, infiltration, desquamation)		1		0
Skin biopsy suggesting alternative diagnosis		-1		0
Organ involvement: one	two or more	1	2	0
Disease duration >15 days		0		-2
Investigation for alternative cause (blood cultures, ANA, serology for Hepatitis viruses, mycoplasma, Chlamydia) ≥ 3 done and negative		1		0

Supplementary Table 2. SCAR phenotype-specific criteria for Acute generalized exanthematous pustulosis (AGEP). AGEP validation score, EuroSCAR group (23). Inclusion of cases with acute generalised exanthematous pustulosis (AGEP) requires an AGEP score of ≥ 5 .

Morphology	Score
Pustules	
Typical*	+2
Compatible**	+1
Insufficient***	0
Erythema	
Typical*	1
Compatible**	
Insufficient***	
Distribution/patter	
Typical*	1
Compatible**	
Insufficient***	
Post pustular desquamation	
Yes	1
No/insufficient	
Course	
Mucosal involvement	
Yes	-2
No	0
Acute onset (≤ 10 days)	
Yes	0
No	-2
Resolution	

Yes	0
No	-4
Fever ≥ 38	
Yes	+1
No	0
PMN $\geq 7000/\text{mm}^3$	
Yes	+1
No	0
Histology	
Other disease	-10
Not representative/no histology	0
Exocytosis of PMN	+1
Subcorneal and/or intraepidermal non-spongiform or NOS '2 pustule(s) with papillary oedema or subcorneal and/or intraepidermal spongiform or NOS pustule(s) without papillary oedema (NOS 1/2 not otherwise specified)	+2
Spongiform subcorneal and/or intraepidermal pustule(s) '3 with papillary edema	+3

Supplementary Table 3. Schedule of assessments during study period.

Schedule of Assessments			
Procedure	Visit	Timeline	Volume
Part 1: DNA	Acute admission / outpatient visit	Acute	Saliva sample or additional 9mls blood
Part 2: Blood draws	Acute or follow-up admission / outpatient visit	Acute / convalescent	$\leq 150\text{mls}$ blood (adults) OR $\leq 50\text{ml}$ (aged 12 – 18 years)
Part 2: Skin sample	Acute admission / outpatient visit	Acute / convalescent	3-4mm punch biopsy
Part 2: Blister fluid	Acute admission	Acute	Any amount
Part 2: Other relevant fluid samples (eg. CSF, urine, LN aspirate)	Acute or follow-up admission / outpatient visit	Acute / convalescent	Any amount
Part 3: Patient survey	Follow-up phone call / electronic mail-out	12 months post SCAR onset (convalescent)	N/A

Drug Hypersensitivity Quality of Life Questionnaire (DrHy-Q)

To be performed at 12 months post onset of rash. Assessment should be performed over the phone by a study investigator or via an online tool (REDCap) if they prefer.

If the patient doesn't speak English:

1. Prior to calling all patients, extract the data from the medical record as outlined above. During the medical record review, check Emergency Department presentation notes medical record to determine whether an interpreter was needed during any episodes.
 - a. If an interpreter was needed during the episode, the telephone interview should be undertaken with the assistance of an interpreter.
 - b. If an interpreter was not used during hospital episodes, but a family member was involved with the patient's care due to a language barrier, contact this person to determine whether a suitable time can be set up to invite the patient to participate.
2. If a potential language barrier is not identified in the episode notes, telephone the patient as outlined below. If during the telephone call, it is apparent that an interpreter is needed, attempt to explain to the patient that you will organise an interpreter to assist with the conversation or ask to speak with an English-speaking family member.
3. If a family member or professional telephone interpreter assists with the interview, note this on the data collection form and the scanned medical record.

Verbal consent script for patients discharged from hospital identified from AUS-SCAR database.

"Hello could I please speak to (patient's full given name and surname)?"

Hello, I am _____, a nurse or doctor at the _____ Hospital.

Before we proceed, can I please confirm your full name, your date of birth and address?

We are doing an audit to see how your health is following a recent episode of an adverse reaction you had to a medication and managed at _____ Hospital. If you agree to be involved, we will ask you some questions about yourself. Usually the interview takes about 10 minutes.

We initially obtained your consent to contact you for this survey and this will be your final involvement in the study.

If you would prefer we can email you a link to a safe online version of the questions for you to answer in your own time.

If patient is not home:

"Is there a time that I could call back to speak with (patient's name)?"

If the patient is busy:

"Is there another time that I could call back that would be convenient?"

Questions:

1. "Would you consider yourself allergic to any drugs?"
 - a. **If Yes** – "Could you please list them?"
2. "Did you have any allergy testing performed after your discharge from hospital?"
 - a. **If Yes** – "Do you know the results?"
3. "Did you receive a medical alert letter or card on discharge from the hospital?"
 - a. **If Yes** – "What is listed on this?"
4. "Have you had any recurrent rashes to drugs since discharge from hospital?"
 - a. **If Yes** – "Could you please list the drugs and describe the reactions"

Phenotype-specific questions

5. **If antibiotic associated SCAR** - "Have you received any antibiotics since the antibiotic allergy testing was performed?" (if antibiotic associated SCAR)
 - a. **If Yes** - "Could you tell me which antibiotics, what they were given for and if you had any reactions?"
 - b. **If Yes** - "Would you be happy with us contacting your general practitioner for these details?"
6. **If SJS or TEN** - "Do you have any ongoing issues with your eyes or vision?"
7. **If SJS or TEN** - "Do you have any ongoing issues of scarring or contractures?"
8. **If DRESS** - "Do you have any autoimmune problems since / after your reaction such as thyroid disease or diabetes"
 - a. **If Yes** - "Diabetes" (Y/N), "Thyroid disease" (Y/N), "Lupus" (Y/N), "Other" (Y/N)

Drug Hypersensitivity Quality of Life Questionnaire (DrHy-Q) – as per previously published protocol (24) – Answer True or False

1. I would like an allergy doctor's opinion before taking drugs prescribed by other doctors
2. I feel different from others
3. Even a little discomfort is a problem for me
4. Since I am unable to take drugs every illness limits me more than other people
5. My allergy problems interfere with my sexual life
6. My family and partner are aware of my allergy problem
7. I am afraid of being administered a drug during an emergency to which I am allergic
8. For each infection I would be confident that there is a drug that I can take safely
9. I feel anxious due to my allergy reaction
10. I worry every time I take a drug different from ones that cause my allergic reactions
11. The idea of taking a medicine makes me feel anxious
12. My family doctor is aware of my adverse drug reaction
13. Experiencing an adverse reaction to drugs affects my life
14. I feel anguished due to my problem of allergy reaction
15. I am afraid I could not deal with the pain
16. I've given up leisure activities (sport, vacations, trips) because of my problem
17. I'm in a bad mood due to my problem of allergy reaction