

BMJ Open Acupuncture for acute musculoskeletal pain management in the emergency department and continuity clinic: a protocol for an adaptive pragmatic randomised controlled trial

Stephanie A Eucker ^{1,2}, Oliver Glass,³ Catherine A Staton ^{1,4}, Mitchell R Knisely,⁵ Amy O'Regan ⁶, Christi De Larco,¹ Michelle Mill,¹ Austin Dixon,¹ Olivia TumSuden,⁷ Erica Walker,¹ Juliet C Dalton,⁸ Alexander Limkakeng,¹ Ann Miller W Maxwell,⁹ Alex Gordeev,¹⁰ Maggie Kuchibhatla,^{10,11} Sheinchung Chow¹⁰

To cite: Eucker SA, Glass O, Staton CA, *et al.* Acupuncture for acute musculoskeletal pain management in the emergency department and continuity clinic: a protocol for an adaptive pragmatic randomised controlled trial. *BMJ Open* 2022;12:e061661. doi:10.1136/bmjopen-2022-061661

► Prepublication history and additional supplemental material for this paper are available online. To view these files, please visit the journal online (<http://dx.doi.org/10.1136/bmjopen-2022-061661>).

Received 01 February 2022
Accepted 05 September 2022



© Author(s) (or their employer(s)) 2022. Re-use permitted under CC BY-NC. No commercial re-use. See rights and permissions. Published by BMJ.

For numbered affiliations see end of article.

Correspondence to

Dr Stephanie A Eucker;
stephanie.eucker@duke.edu

ABSTRACT

Introduction Chronic musculoskeletal pain causes a significant burden on health and quality of life and may result from inadequate treatment of acute musculoskeletal pain. The emergency department (ED) represents a novel setting in which to test non-pharmacological interventions early in the pain trajectory to prevent the transition from acute to chronic pain. Acupuncture is increasingly recognised as a safe, affordable and effective treatment for pain and anxiety in the clinic setting, but it has yet to be established as a primary treatment option in the ED.

Methods and analysis This pragmatic clinical trial uses a two-stage adaptive randomised design to determine the feasibility, acceptability and effectiveness of acupuncture initiated in the ED and continued in outpatient clinic for treating acute musculoskeletal pain. The objective of the first (treatment selection) stage is to determine the more effective style of ED-based acupuncture, auricular acupuncture or peripheral acupuncture, as compared with no acupuncture. All arms will receive usual care at the discretion of the ED provider blinded to treatment arm. The objective of the second (effectiveness confirmation) stage is to confirm the impact of the selected acupuncture arm on pain reduction. An interim analysis is planned at the end of stage 1 based on probability of being the best treatment, after which adaptations will be considered including dropping the less effective arm, sample size re-estimation and unequal treatment allocation ratio (eg, 1:2) for stage 2. Acupuncture treatments will be delivered by licensed acupuncturists in the ED and twice weekly for 1 month afterward in an outpatient clinic.

Ethics and dissemination This study has been reviewed and approved by the Duke University Health System Institutional Review Board. Informed consent will be obtained from all participants. Results will be disseminated through peer-review publications and public and conference presentations.

Trial registration number NCT04290741.

STRENGTHS AND LIMITATIONS OF THIS STUDY

- ⇒ Two-stage adaptive design balances improved implementation with statistical power to measure effectiveness of acupuncture.
- ⇒ Two types of acupuncture, (battlefield) auricular and peripheral, enable efficient emergency department treatment and are compared with control.
- ⇒ Pragmatic design better replicates real-world conditions but limits assessment of specific versus non-specific effects of acupuncture on pain outcomes.
- ⇒ Includes longitudinal delivery of acupuncture treatments in both the emergency department and outpatient clinic for 1 month to treat acute musculoskeletal pain.
- ⇒ Breadth of biopsychosocial outcomes to assess how acupuncture works and help bridge the gap between eastern and western medicine.

INTRODUCTION

Over 40 million adults in the USA suffer from chronic pain, which is pain lasting 3 months or longer.¹ Musculoskeletal pain, one of the largest subsets of chronic pain conditions, leads to high rates of health-care utilisation, increased opioid use, and poor physical, psychological and cognitive health.¹ Musculoskeletal pain often results from an acute injury, and if not adequately treated, can transition to a chronic pain condition.^{2,3} Significant challenges exist for adequately managing musculoskeletal pain due to the heterogenous nature of its causes and pain symptomatology, and standard treatments are often ineffective.^{4,5} Additionally, numerous biological (eg, inflammatory mediators), psychological (eg, pain catastrophising) and social (eg, social

support) factors (referred to collectively as 'biopsychosocial' factors) contribute to the complexity of musculoskeletal pain development, severity, progression and disability.⁶ Recent studies have begun to explore the role of biopsychosocial factors in the transition from acute to chronic pain and how they may serve as targets for intervention.^{3 7} One strategy to prevent the transition from acute to chronic pain is early intervention using non-pharmacological strategies that influence these biopsychosocial factors. The emergency department (ED) represents a novel setting in which to test non-pharmacological interventions early in the pain trajectory with the goal of preventing the transition from acute to chronic musculoskeletal pain.

Acupuncture is a safe and cost-effective treatment for acute and chronic pain, particularly of the back, neck and shoulder.^{8 9} Furthermore, acupuncture has shown benefit in treating both pain and anxiety,⁸ and acts on numerous neural, endogenous opioid and inflammatory pathways,¹⁰ thereby representing a broader biopsychosocial intervention than other single pain treatment modalities. However, data on the use of acupuncture for pain management in the ED is limited since acupuncture practitioners are not currently standard or commonplace in US EDs.^{11 12} A recent meta-analysis of ED studies has shown acupuncture to be superior to sham/placebo and equivalent or better than medications for pain reduction.^{11 13} Only three small pilot studies have compared acupuncture combined with usual care to usual care alone, with results favouring acupuncture.^{11 14} No study has compared different acupuncture protocols (eg, battlefield/auricular acupuncture (AA) and peripheral acupuncture (PA)) to determine which is more efficacious, feasible or acceptable in the ED. Moreover, despite evidence that acupuncture is more effective with multiple sessions,¹⁵ prior ED studies have not included a longitudinal outpatient acupuncture component for post-ED pain management or longer-term outcomes.

Therefore, the purpose of this study is to determine the effectiveness, feasibility and acceptability of acupuncture initiated in the ED and continued in a group clinic setting for treating acute musculoskeletal pain. The ED population is largely heterogeneous in sociodemographic composition and comprises populations previously excluded from acupuncture studies.¹⁶ A pragmatic randomised controlled trial can determine the extent to which ED patients will attend and derive benefit from the full acupuncture experience, while extending the scope and assessment of treatment effectiveness to a more broadly representative US patient population. We hypothesise that, when added to usual care, acupuncture initiated in the ED and continued in an outpatient setting for 1 month is more effective than usual care alone at reducing acute musculoskeletal pain at 1 hour while in the ED and at 1 month after ED visit.

METHODS AND ANALYSIS

Study design

This pragmatic clinical trial uses a two-stage adaptive randomised design to determine the feasibility, acceptability and effectiveness of acupuncture initiated in the ED for treating acute musculoskeletal pain. The objective of the first (treatment selection) stage is to determine the more effective style of ED-based acupuncture, that is, AA based on the Battlefield Acupuncture protocol, or PA, as compared with no acupuncture (NA). The objective of the second (effectiveness confirmation) stage is to confirm the impact of the selected acupuncture arm on pain reduction. An interim analysis is planned at the end of stage 1 based on probability of being the best treatment,¹⁷ after which adaptations will be considered including dropping the less effective arm, sample size re-estimation and unequal treatment allocation ratio such as 1:2 ratio for effectiveness in stage 2. Acupuncture treatments will be delivered by licensed acupuncturists in the ED and up to two times per week for 1 month afterward in an outpatient clinic. In this pragmatic design, all study arms will receive usual care for pain management at the discretion of the ED provider who will be blinded to treatment arm.

Study setting and recruitment

Trial participants will be recruited from the Duke University Hospital ED, an urban academic tertiary care referral centre in North Carolina with 80 000 ED visits per year. All study screening, recruitment, informed e-consent (online supplemental appendix 1), and enrolment procedures will be performed by trained clinical research coordinators. Study acupuncturists will be available during enrolment to explain acupuncture treatment to eligible patients. Outpatient acupuncture visits will be scheduled with the study acupuncturists using secure HIPAA-compliant scheduling software and take place at the Duke Integrative Medicine Clinic. Patient recruitment began in February 2020 and is ongoing. The study start date is 10 February 2020, and planned end date is 28 February 2023.

Eligibility criteria

Inclusion criteria

Participants must be adult (age 18 years or older) ED patients with pain in the neck, back, arms and/or legs and a clinical diagnosis of acute (≤ 7 days) musculoskeletal pain as determined by an ED provider, and able to read and understand the consent form in English. Participants with acute exacerbation of chronic pain in which the acute component is ≤ 7 days will be included, as this is a common ED presentation.¹⁸

Exclusion criteria

Patients will be excluded if they are: (1) suspected to have a non-musculoskeletal cause of pain, (2) unable to receive acupuncture due to injury, infection or other contraindication to the use of needles at acupuncture sites; (3) not possible to attend outpatient clinic (eg, visiting from

out-of-state); (4) unable to provide informed consent or to comprehend or complete study measures or procedures due to cognitive impairment, including evidence of drug, medication or alcohol intoxication, or due to severe hearing or speech impairment; (5) unable to safely participate due to critical illness, obvious bony deformity, other serious medical condition (including active COVID-19 infection) and/or based on ED provider judgement.

Randomisation and blinding

Subjects will be randomised 1:1:1 to one of three treatment groups: (1) AA, (2) PA or (3) the control group with NA. The randomisation code will be computer generated by the Biostatistics, Epidemiology and Research Design Methods Core of the Department of Biostatistics and Bioinformatics, Duke University Medical Center. An unstratified block randomisation method will be used to generate the random allocation sequence, which will be stored in a secure electronic file accessible only by the acupuncturists to ensure allocation concealment. The research coordinator enrolling eligible patients will be blinded to the allocation sequence and randomisation assignments. After participant baseline measures and acupuncturist initial clinical assessment, the treating acupuncturist will open the randomisation file and assign the participant to the treatment group corresponding to the next sequential entry.

The participants and the acupuncturists will not be blinded to their treatment allocation. All other members of the ED clinical and research teams will be blinded. Round stickers will be applied to the ears of all participants at the battlefield protocol sites to blind these members to patient assignment while in the ED. If the participant reports an adverse event (AE), the research coordinator may become unblinded to record and address the event. Due to the adaptive nature of the statistical design, the statisticians and data safety monitoring committee (DSMC) will be unblinded to the control treatment arm in stage 1 to perform the interim analysis; the statistician analysing the data will remain blinded to the treatment arms. All other study investigators will remain blinded.

Interventions

Acupuncture will only be performed by licensed acupuncturists. For this study, two styles of acupuncture designed to increase feasibility in the ED will be employed: (1) AA will involve the placement of pyonex needles in up to five sites on each ear based on the previously developed battlefield acupuncture protocol to treat pain.^{19 20} (2) PA will involve the placement of needles in head, neck, arms, legs, hands and feet sites selected at the clinical discretion of the treating acupuncturist based on acupuncture diagnosis as the primary mode of therapy.^{21 22} Acupuncture sites on the torso (ie, chest, back and abdomen) will not be used, as accessing these sites is often logistically challenging in a busy ED environment. Both acupuncture groups will receive acupuncture while in the ED. Afterwards, both groups will receive information and free

access to acupuncture in an outpatient clinic for up to two times a week for 1 month after their ED visit. Our outpatient acupuncture clinic is designed as a group-based clinic modified for COVID-19-related social distancing to enhance access and affordability. All post-ED outpatient acupuncture treatments for both acupuncture groups will involve either PA, AA or both at the clinical discretion of the treating acupuncturist. The specific components of each acupuncture treatment will be recorded in details according to the revised Standards for Reporting Interventions in Clinical Trials of Acupuncture (STRICTA) recommendations.²³ (3) The control group (NA) will not receive acupuncture in the ED and will be asked not to seek acupuncture treatment for 1 month after their ED visit. Control group participants will complete assessments only, with the timing and content of their assessments matching those completed by the intervention groups.

All participants in the control group and in both acupuncture groups will receive usual care for acute pain management at the discretion of their ED provider who will remain blinded to study arm. Usual care may include but is not limited to medications/analgesics, non-pharmacological strategies (eg, ice, heat, walking), and referrals to outpatient specialists and/or other non-pharmacological treatment providers (eg, physical therapy).

Outcomes

Outcome measures and biopsychosocial factors will be collected before randomisation (ED baseline), 1 hour after randomisation, and at 2 weeks and 1 month post-ED visit.

Primary outcome measures

The primary ED effectiveness endpoint will be the change in current pain score based on the 0–10 pain Numeric Rating Scale (NRS) from ED baseline to 1 hour post-treatment. The primary combined ED-outpatient clinic effectiveness endpoint will be change in 24-hour average NRS pain score from ED baseline to 1-month post-ED visit.

Feasibility will be assessed based on patient recruitment and retention rates both in the ED and with subsequent 1-month follow-up. Acceptability will be assessed based on patient-reported satisfaction as well as outpatient acupuncture clinic attendance rates, with attention to reasons for attrition or differential acceptance rates for different groups of participants. Safety will be evaluated by recording any AEs, with common reasons to include bleeding, bruising, or pain at the needle sites. Serious AEs (SAEs) are expected to be extremely rare given previous highly favourable safety data on acupuncture, and include infections, hospitalisations and deaths.^{21 24}

Secondary outcome measures

Secondary outcomes will include patient function, quality of life and biopsychosocial factors.

Function and quality-of-life will be measured at ED baseline, 2 weeks and 1 month across several different domains, including pain interference, fatigue, depression, anxiety, sleep disturbance, physical function, social function and cognitive function, using the validated PROMIS-29 and Neuro-QoL instruments.^{25 26} Given the acute time course of pain (7 days or less) for eligible participants, the time-frame for the PROMIS-29 questions will be modified from 'over the past 7 days' to 'over the past 24 hours (1 day)' for the ED baseline assessment only. We will also measure patient-reported medication use, including opioid and non-opioid medications. Opioid use will be assessed through patient report in the past 24 hours and in the past 7 days, as well as by electronic medical record (EMR) data extraction of prescriptions written during and up to 1 year after the ED visit.

A comprehensive set of biopsychosocial factors will be measured at ED baseline and 1-month follow-up. These include:

- ▶ Patient demographics including age, sex, race, ethnicity, employment, marital status, education, income and insurance status.
- ▶ Pain characteristics including anatomical location of pain, duration of current episode of musculoskeletal pain, and history of prior episodes of musculoskeletal pain.
- ▶ Degree and type of social support, including instrumental, informational and emotional support, will be measured using the PROMIS Social Support four-item scales.²⁷
- ▶ All non-medical substance use, including opioid misuse, through the validated ASSIST tool.²⁸
- ▶ Presence and severity of chronic pain using a recently validated simplified version of the graded chronic pain scale derived from the three-item Pain, Enjoyment and General activity (PEG) score and degree of activity limitations.^{29 30}
- ▶ Symptoms of systemic pathology will be measured using the validated Optimal Screening for Prediction of Referral and Outcome Review of Systems (OSPRO) tool, which predicts pain outcomes after musculoskeletal care in outpatient physical therapy settings.^{31 32}
- ▶ Pain-related psychological distress using the validated concise OSPRO Yellow Flag tool, an assessment tool for measuring psychological response to pain including pain coping, catastrophising, fear-avoidance and mood.^{32 33}
- ▶ Pain-related emotional distress based on the Perceived Stress Scale tool.³⁴
- ▶ Pain coping skills using the Coping Skills Questionnaire two-item form.³⁵
- ▶ Pain self-efficacy using the Pain Self-Efficacy Questionnaire.³⁶

Two additional measures will be collected in-person in the ED at baseline and 1 hour:

- ▶ Pressure pain threshold, a non-invasive quantitative test of pain sensitivity that measures the lowest applied pressure needed to evoke to an individual's

perception of pain, will be performed on the bilateral trapezius muscles using slow progressive pressure (1 kg/cm²/s) with a standard hand-held algometer (Wagner Digital Force Gauge, Wagner Instruments, Greenwich, Connecticut, USA).^{37 38}

- ▶ Blood samples will be collected and stored in a secure repository for future biomarker analysis of biochemical and genetic pathways involved in pain and response to acupuncture. Participants may opt out of the blood draw and still participate in the clinical trial.

Additional EMR data will be extracted by trained analysts and include medications administered and prescribed from the ED, opioids prescribed up to 1 year following index ED visit, return ED visits and hospitalisations up to 3 months following index ED visit, and ICD-10 codes for pain conditions and co-occurring diagnoses (eg, medical and psychiatric comorbidities).

Data collection and management

Data will be collected at ED baseline, 1-hour post-treatment, and at 2 weeks and 1-month post-ED visit, with data entered directly into a REDCap secure electronic database.³⁹ All in-person biological measures including pressure pain threshold and blood draws for biomarkers will be obtained during the ED visit at baseline and 1 hour by research coordinators embedded in the ED. Pressure pain threshold will be recorded in REDCap. Blood samples will be coded with a unique study identifier and deidentified for storage.

ED baseline and 1-hour questionnaires to collect biopsychosocial factors and outcome measures will be completed by participants independently and entered directly into REDCap while they are in the ED (figure 1). Research coordinators will be available for assistance with data entry if requested by participants. Participants will be contacted at 2 weeks and 1-month post-ED visit to complete online REDCap follow-up surveys (figure 1) using follow-up procedures to facilitate maximum study retention. These procedures include up to three automated electronic follow-up surveys sent via email, automated text message links to the surveys, follow-up phone calls by ED research assistants with the option to complete surveys by phone, and compensation for 1-month follow-up assessment completion.

Acupuncturist assessments and treatment details in the ED and outpatient clinic will be entered directly into REDCap forms by the treating acupuncturist. ED medication data will be entered into REDCap forms by research coordinators. Acupuncture AEs and SAEs will be entered into REDCap forms by the study personnel notified of the event, and follow-up of the events will be completed within the same forms by the personnel completing follow-ups. Additional EMR data will be extracted by trained analysts and stored in a protected analytics environment. All data will be stored for at least 5 years after study completion for primary and ancillary studies, with access restricted to study staff, and is included in patient consent. To protect confidentiality, no personal information will be shared.

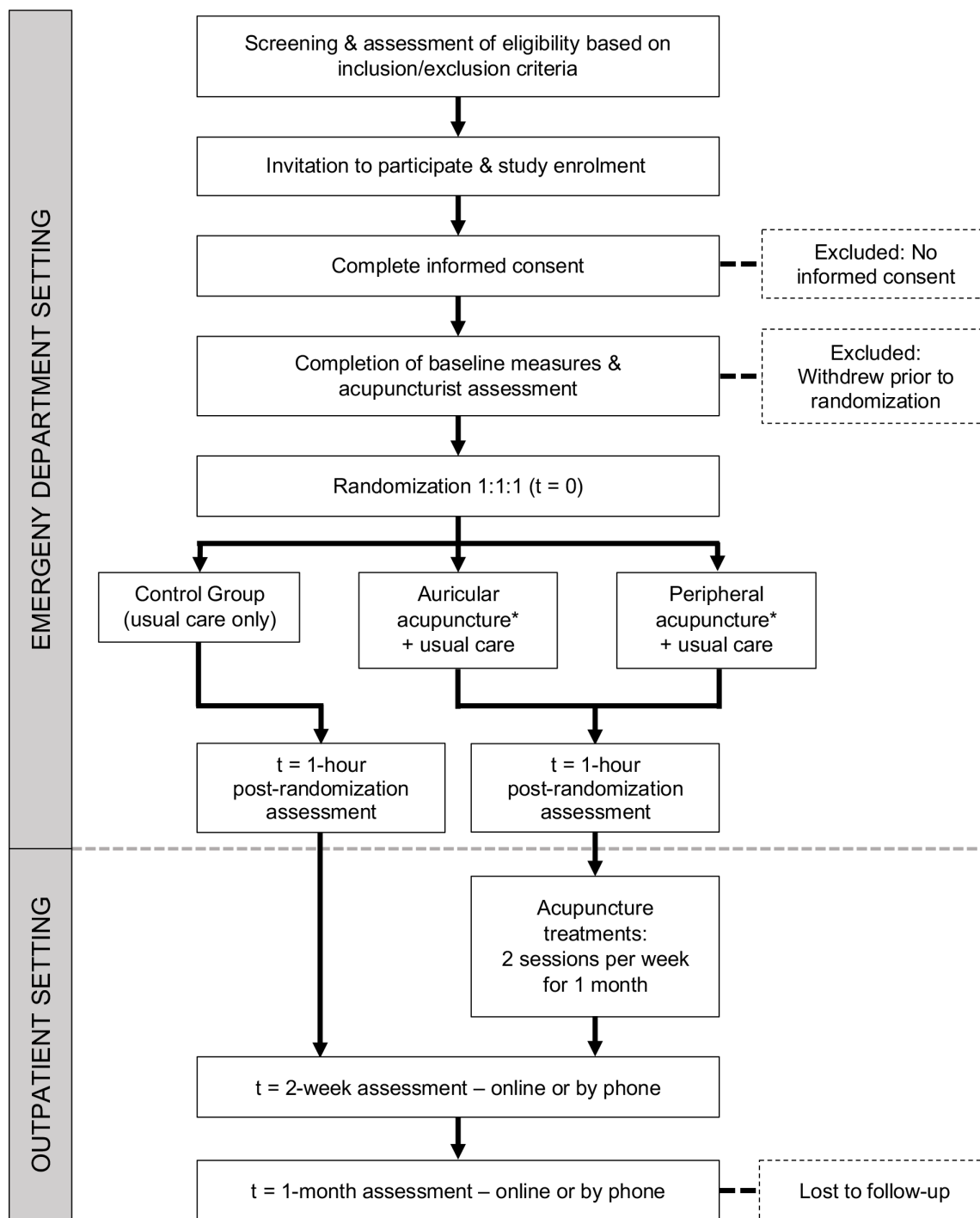


Figure 1 Trial flow chart. *After interim analysis in stage 1, the less effective acupuncture arm will be dropped.

Sample size

For stage 1, a total of 90 subjects (30 subjects per arm) will be used to (1) assess feasibility based on patient recruitment and retention rates, and (2) determine the more effective arm at the ED 1-hour time point for moving forward to stage 2 for effectiveness confirmation. Sample size calculation for achieving stage 2 study objectives assumed^{17 40 41}: (1) a stage 2 two-arm parallel design with 1:2 control:treatment allocation; (2) the primary endpoint is normally distributed; (3) with NA, a mean pain score of 6.5 with an SD of 2.5⁴²; (4) a minimally

clinically meaningful difference in pain score of 1.3⁴²; (5) a power of 90.0% and (6) a 5% level of significance. This yielded a total sample size of 198 subjects (table 1) at the end of stage 2. To account for a possible 10% drop-out rate requires increasing the total number enrolled to 220 subjects.

Data analysis and statistical methods

Population: The primary analysis will be performed based on the intention-to-treat population, which is defined as all randomised subjects who have at least one follow-up

Table 1 Sample size estimation and allocation

Stage	Randomisation	Sample size	Total
Stage 1	1:1:1	30 (NA), 30 (AA), 30 (PA)	90
Stage 2	1:2	36 (NA), 72 (AA or PA)	108
		Total	198

AA, auricular acupuncture; NA, no acupuncture; PA, peripheral acupuncture.

evaluation regardless of their compliance with the protocol. In case of a substantial number of protocol violations, additional per-protocol analyses may be performed to determine whether they influence the conclusions.

General analysis conventions/rules: Descriptive statistics for continuous variables will be provided as: number of subjects, means and SD, medians and IQRs, and minima and maxima. Descriptive statistics for discrete (categorical) variables will be provided as the number and percentage of subjects in each category. Time-to-event variables will be provided using Kaplan-Meier survival curve estimates. Unless otherwise noted, any tests of hypotheses are two sided, and the nominal level of significance will be 5%.

Handling of missing data: Imputation of missing data will be handled depending on the missingness mechanism.

Baseline comparability: Number of subjects randomised, completing the study and reasons for discontinuation will be summarised by treatment group. Patient demographics and baseline characteristics including biopsychosocial factors will be tabulated and compared for treatment group differences. All comparisons will be performed by using the Cochran-Mantel-Haenszel test for categorical variables and two-way analysis of variance for continuous variables.

Primary analysis: The primary variable, change in pain score from ED baseline to 1-hour post-treatment, will be evaluated and compared between treatment groups. The corresponding 95% CI for the difference in mean response rate between treatment groups will be obtained using analysis of variance (ANOVA).

Secondary analyses: Responder analysis will also be performed using a logistic regression analysis that incorporates potential risk factors identified for response. Point estimate and the corresponding 95% CI of ORs for the identified risk factors will also be obtained. In addition, the Stuart-Maxwell test may be performed to examine changes (or shifts) from baseline to follow-ups after ED discharge.

Exploratory analyses: Exploratory analyses such as biomarker changes pre to 1-hour post-treatment, subgroup analyses based on patient demographics and/or patient characteristics, and predictive model building, validation and/or generalisability may be conducted as deemed appropriate by the principal investigator(s), biostatistician or as recommended by an internal

established DSMC. These include secondary analyses of the impact on outcomes of the number of acupuncture needle sites or number of acupuncture pathways used, number of clinic visits attended, within treatment pain and/or anxiety reductions, among others. If possible, additional exploratory models predicting response to acupuncture based on biopsychosocial factors will be examined.

Safety analysis: Table will show the AEs ordered by decreasing frequency for all participants. Separate tabulations will summarise the AEs by seriousness, severity, and possible association with study drug. If appropriate, the incidence rate of AEs will be compared by Fisher's exact test. Special attention will be given to those subjects who have discontinued due to AEs and those subjects who experienced an SAE.

Interim analysis: There will be one planned interim analysis which will take place when two-thirds of subjects (ie, 20 of 30 subjects per arm) have completed stage 1. At interim analysis, the feasibility will be assessed based on patient recruitment and retention rates, and the more effective arm will be determined based on change in pain score at the 1-hour ED time point based on probability of being the more effective treatment.¹⁷ Some adaptations such as modifying current treatment arm, different randomisation scheme, additional interim analyses and/or sample size re-estimation may be applied as recommended by the DSMC.

Data monitoring

A DSMC comprised an independent biostatistician, emergency medicine physician–researcher and a medical acupuncturist-pain medicine clinician will meet at least two times per year with ad hoc reports as needed, to monitor the safety and performance quality of the trial. The DSMC will also evaluate the interim analysis to make recommendations on adaptations for stage 2 to the study investigators.

AEs and SAEs and their follow ups will be recorded in a secure REDCap file. AEs will be reviewed weekly, and SAEs will be reviewed immediately by the principal investigator and lead research coordinator and addressed as needed. All SAEs will be reported within 24 hours to the DSMC, IRB and study sponsor.

ETHICS AND DISSEMINATION

The Duke University Health System Institutional Review Board has reviewed and approved this study (Protocol # Pro00104140). This trial was registered on 7 February 2020 with clinicaltrials.gov (registration # NCT04290741) and released to the public on 28 February 2020. We used the Standard Protocol Items: Recommendations for Interventional Trials checklist when writing our report.⁴³ On completion of the trial, the results will be disseminated through peer-review publications as well as presentations at professional organisation conferences and to the public including healthcare organisations.

Patient and public involvement

Patients and the public were not involved in the original design of the study. However, patient participants will be interviewed for feedback on their acupuncture and research experience to potentially inform future adaptations.

DISCUSSION

Adaptive design: The innovative adaptive design of this study enables findings from the first stage to be used to increase the likelihood of success in the second stage for measuring the true effectiveness of acupuncture in an ED population. Adaptations to drop the least effective arm and/or mitigate issues that arise in stage 1 are designed to optimise implementation of acupuncture for both the study and its broader applicability to other settings.⁴⁴ Efforts will be made to limit potential bias from adaptations and maintain trial integrity and validity by using an independent DSMC to decide on any adaptations.

Novel care pathways: This will be one of the first randomised trials to integrate acupuncture into ED care and to establish linkages to outpatient acupuncture treatment. It will also be one of the first acupuncture studies to include a diverse sociodemographic population and to use a group-based clinic to enhance access and affordability of this treatment option.¹⁶ Patient knowledge of, access to, and availability of non-pharmacological therapies are frequent barriers to use.^{16 45} Post-ED follow-up can be particularly challenging among ED patients due to cost and time constraints, so lowering these barriers are key to improving access to care. Furthermore, initial therapeutic experience with acupuncture has been shown to increase patient follow-through with continued acupuncture,⁴⁶ highlighting the benefit of combining ED with outpatient care. Goals of the study include reducing patient need for pain medications, particularly opioids, and return ED visits for pain control through use of acupuncture. Our findings will inform future ED and follow-up acupuncture treatment recommendations.

Tailoring acupuncture to the ED environment: Comparing AA to PA in the ED setting is a key component of our study, as it allows further exploration of the feasibility and acceptability of ED-based acupuncture through two different patient experiences. AA can be delivered quickly, easily and without removal of clothing, thus fitting well within the space and time constraints of the ED environment.¹⁹ Furthermore, specific types of auricular needles can be left in place for later self-stimulation by patients to provide additional pain relief for an additional 1–5 days.^{19 47} Use of AA can be limited by patient discomfort with needles in the ear, potential compatibility issues with obtaining CT and MRI imaging while needles are in place, and lack of clinical guidelines for its use.

PA allows for greater personalisation of treatment than AA by offering a much larger number of meridians or channels that the acupuncturist can access for pain relief.^{48 49} PA also offers the flexibility to adapt treatments

for very anxious or needle-sensitive patients because needle depth and level of stimulation can be modified to suit individual needs. While tight clothing may limit the number of accessible acupuncture points, this is typically not a major barrier for experienced acupuncturists.

While PA can take longer for the patient, 20–45 min for PA compared with 10–20 min for AA, spending more time with the acupuncturist can contribute to their increased sense of support and better anxiety relief. In addition, PA can be more efficient for the acupuncturist than AA when treating multiple patients, as the acupuncturist can leave one patient while needles are in place to tend to the next patient, returning later for needle removal and session completion. By contrast, AA involves frequent patient reassessments between each needle insertion requiring the acupuncturist's full attention until session completion before proceeding to the next patient.

Usual care for ED pain management: The choice of usual care for all treatment arms was based on the goal of developing a practical and feasible intervention in the ED setting where medications are expected by patients but can be variably prescribed among providers.^{50 51} Therefore, restriction of medications from any one arm could be perceived as undesirable or unethical by ED patients seeking care. In addition, choice of medication can depend on many factors, including provider and patient preferences, and allergies, adverse reactions or contraindications to specific medications. Therefore, in order to increase the applicability of our findings, the decision was made to allow provider judgement to dictate medication choice as well as dosing. This has the added benefit of managing breakthrough pain through usual ED provider reassessment and repeat dosing as deemed clinically appropriate. ED providers were kept blinded to treatment arm so that their usual clinical judgement determined usual care treatment. Thus, the results of this trial will reflect the results expected in actual clinical practice in an academic ED.

The choice of NA for the control group as compared with sham or other placebo was based on the goal of studying the effect of acupuncture in a pragmatic setting. Given the high volume, high throughput environment of most US EDs, there is not a typical usual care option that would equate to a placebo or sham intervention. For instance, most EDs do not have the time or resources to routinely provide another non-pharmacological practitioner or additional ED staff member who could devote extra time for patient support. Thus, the alternative to acupuncture in most settings would simply be NA, with a focus on medication prescriptions, supportive care, and/or, less commonly, outpatient referrals (eg, primary care, physical therapist and orthopedist) for further management.

Breadth of study outcomes: This study will also generate data on biopsychosocial factors to better characterise the population of patients seen in the ED for acute musculoskeletal pain. Exploration of these factors may also identify mediators of the patient response to acupuncture.

These mediators may help identify patients more likely to improve with acupuncture and/or better elucidate potential mechanisms of acupuncture's therapeutic effects. Findings from this study will further our understanding of acute pain and its non-pharmacological management through acupuncture, as well as their associations with the comprehensive set of biopsychosocial factors.

Author affiliations

¹Department of Emergency Medicine, Duke University School of Medicine, Durham, North Carolina, USA

²Department of Orthopaedic Surgery, Duke University School of Medicine, Durham, North Carolina, USA

³Department of Medicine, Division of General Internal Medicine, Duke University School of Medicine, Durham, North Carolina, USA

⁴Duke Global Health Institute, Durham, North Carolina, USA

⁵Duke University School of Nursing, Durham, North Carolina, USA

⁶Department of Population Health Sciences, Duke University, Durham, North Carolina, USA

⁷UNC Adams School of Dentistry, Chapel Hill, North Carolina, USA

⁸Duke Office of Clinical Research, Duke University, Durham, North Carolina, USA

⁹Durham Veterans Affairs Health Care System, Durham, North Carolina, USA

¹⁰Department of Biostatistics and Bioinformatics, Duke University, Durham, North Carolina, USA

¹¹Center for Aging, Duke University, Durham, North Carolina, USA

Acknowledgements The authors are grateful to Tara BiancaRadofor herinputas a licensed acupuncturist on the design and acupuncture treatment details of this study. We are also grateful to Andrew Bouffler, Lauren McGowan and Tedra Porter for informing the study design through their experience and insight as clinical research coordinators.

Contributors SAE drafted the study protocol manuscript. OG, CAS and MRK participated in the design of the study and revising the protocol manuscript. SC, MK and AG were responsible for the statistical design of the study and revising the protocol manuscript. CDL, MM, AD, AMWM and AL provided clinical advice and made critical revisions to the protocol and manuscript. EW, AO'R, OT and JCD were involved as clinical research coordinators in revising and editing the protocol and manuscript. SAE is principal investigator of the study and is responsible for making final decisions on the trial design and manuscript preparation. All authors approved the final manuscript.

Funding This project is supported by The Substance Abuse and Mental Health Services Administration (SAMHSA) Emergency Department Alternatives to Opioids Demonstration Program (ED-ALT), grant number H79T1083109. This project is included as part of the Duke School of Medicine Opioid Collaboratory which is administered through the Duke Department of Population Health Sciences and supported by grant funding from the Duke Endowment. The Collaboratory's mission is to save lives and reduce the harmful impact of opioids in North Carolina through the development, implementation, and/or evaluation of system-level interventions. The Duke Biostatistics, Epidemiology, and Research Design Core's support was made possible by the CTSA Grant (UL1TR002553) from the National Center for Advancing Translational Sciences (NCATS) of the NIH and the NIH Roadmap for Medical Research.

Disclaimer The study funders had no role in the study design, collection or analysis of data. This report's contents are solely the responsibility of the authors and do not represent the official views of NCATS or NIH.

Competing interests None declared.

Patient and public involvement Patients and/or the public were not involved in the design, or conduct, or reporting, or dissemination plans of this research.

Patient consent for publication Not applicable.

Provenance and peer review Not commissioned; externally peer reviewed.

Supplemental material This content has been supplied by the author(s). It has not been vetted by BMJ Publishing Group Limited (BMJ) and may not have been peer-reviewed. Any opinions or recommendations discussed are solely those of the author(s) and are not endorsed by BMJ. BMJ disclaims all liability and responsibility arising from any reliance placed on the content. Where the content includes any translated material, BMJ does not warrant the accuracy and reliability

of the translations (including but not limited to local regulations, clinical guidelines, terminology, drug names and drug dosages), and is not responsible for any error and/or omissions arising from translation and adaptation or otherwise.

Open access This is an open access article distributed in accordance with the Creative Commons Attribution Non Commercial (CC BY-NC 4.0) license, which permits others to distribute, remix, adapt, build upon this work non-commercially, and license their derivative works on different terms, provided the original work is properly cited, appropriate credit is given, any changes made indicated, and the use is non-commercial. See: <http://creativecommons.org/licenses/by-nc/4.0/>.

ORCID iDs

Stephanie A Eucker <http://orcid.org/0000-0001-9986-5773>

Catherine A Staton <http://orcid.org/0000-0002-6468-2894>

Amy O'Regan <http://orcid.org/0000-0001-6788-5673>

REFERENCES

- 1 Pitcher MH, Von Korff M, Bushnell MC, *et al*. Prevalence and profile of high-impact chronic pain in the United States. *J Pain* 2019;20:146–60.
- 2 Friedman BW, Conway J, Campbell C, *et al*. Pain one week after an emergency department visit for acute low back pain is associated with poor three-month outcomes. *Acad Emerg Med* 2018;25:1138–45.
- 3 Stevens JM, Delitto A, Khoja SS, *et al*. Risk factors associated with transition from acute to chronic low back pain in US patients seeking primary care. *JAMA Netw Open* 2021;4:e2037371.
- 4 Chou R, Deyo R, Friedly J, *et al*. Systemic pharmacologic therapies for low back pain: a systematic review for an American College of physicians clinical practice guideline. *Ann Intern Med* 2017;166:480–92.
- 5 Busse JW, Sadeghirad B, Oparin Y, *et al*. Management of acute pain from Non-Low back, musculoskeletal injuries. *Ann Intern Med* 2020;173:730–8.
- 6 Edwards RR, Dworkin RH, Sullivan MD, *et al*. The role of psychosocial processes in the development and maintenance of chronic pain. *J Pain* 2016;17:T70–92.
- 7 Kent ML, Tighe PJ, Belfer I, *et al*. The ACTION-APS-AAPM pain taxonomy (AAAPT) multidimensional approach to classifying acute pain conditions. *J Pain* 2017;18:479–89.
- 8 Fan AY, Miller DW, Bolash B, *et al*. Acupuncture's role in solving the opioid epidemic: evidence, cost-effectiveness, and care availability for acupuncture as a primary, Non-Pharmacologic method for pain relief and Management-White paper 2017. *J Integr Med* 2017;15:411–25.
- 9 Chow SC. *Quantitative methods for traditional Chinese medicine development*. New York: Chapman and Hall/CRC Press, Taylor & Francis, 2015.
- 10 McDonald JL, Cripps AW, Smith PK. Mediators, receptors, and signalling pathways in the anti-inflammatory and antihyperalgesic effects of acupuncture. *Evid Based Complement Alternat Med* 2015;2015:1–10.
- 11 Jan AL, Aldridge ES, Rogers IR, *et al*. Review article: does acupuncture have a role in providing analgesia in the emergency setting? A systematic review and meta-analysis. *Emerg Med Australas* 2017;29:490–8.
- 12 Chia KL, Lam RPK, Lam CK, *et al*. Acupuncture in the emergency department: a systematic review of randomised controlled trials. *Acupunct Med* 2018;36:183–92.
- 13 Grissa MH, Baccouche H, Boubaker H, *et al*. Acupuncture vs intravenous morphine in the management of acute pain in the ED. *Am J Emerg Med* 2016;34:2112–6.
- 14 Goertz CMH, Niemtzow R, Burns SM, *et al*. Auricular acupuncture in the treatment of acute pain syndromes: a pilot study. *Mil Med* 2006;171:1010–4.
- 15 Kligler B, Nielsen A, Kohrher C, *et al*. Acupuncture therapy in a group setting for chronic pain. *Pain Med* 2018;19:393–403.
- 16 Baker K, McDonald J, Steel A. Tackling health inequity: a commentary on the potential of acupuncture to improve health outcomes of marginalised populations. *Acupunct Med* 2021;39:533–537.
- 17 Zheng J, Chow S-C. Criteria for dose-finding in two-stage seamless adaptive design. *J Biopharm Stat* 2019;29:908–19.
- 18 McLeod D, Nelson K. The role of the emergency department in the acute management of chronic or recurrent pain. *Australas Emerg Nurs J* 2013;16:30–6.
- 19 Niemtzow RC. Battlefield acupuncture. *Med Acupunct* 2007;19:225–8.

- 20 Federman DG, Zeliadt SB, Thomas ER, *et al.* Battlefield acupuncture in the Veterans health administration: effectiveness in individual and group settings for pain and pain comorbidities. *Med Acupunct* 2018;30:273–8.
- 21 Hempel S, Taylor SL, Solloway MR. *Evidence map of acupuncture*. Washington (DC): Department of Veterans Affairs, 2014.
- 22 North Carolina Acupuncture Licensing Board. General information: fundamental information about acupuncture. North Carolina acupuncture licensing board website. Available: <https://www.ncalb.com/general-information/> [Accessed 31 Mar 2021].
- 23 MacPherson H, Altman DG, Hammerschlag R, *et al.* Revised standards for reporting interventions in clinical trials of acupuncture (stricta): extending the CONSORT statement. *J Evid Based Med* 2010;3:140–55.
- 24 Weidenhammer W, Streng A, Linde K, *et al.* Acupuncture for chronic pain within the research program of 10 German Health Insurance Funds--basic results from an observational study. *Complement Ther Med* 2007;15:238–46.
- 25 Cella D, Riley W, Stone A, *et al.* The patient-reported outcomes measurement information system (PROMIS) developed and tested its first wave of adult self-reported health outcome item banks: 2005–2008. *J Clin Epidemiol* 2010;63:1179–94.
- 26 Cella D, Lai J-S, Nowinski CJ, *et al.* Neuro-QOL: brief measures of health-related quality of life for clinical research in neurology. *Neurology* 2012;78:1860–7.
- 27 Hahn EA, DeWalt DA, Bode RK, *et al.* New English and Spanish social health measures will facilitate evaluating health determinants. *Health Psychol* 2014;33:490–9.
- 28 Humeniuk R, Henry-Edwards S, Ali R. The alcohol, smoking and substance involvement screening test (assist): manual for use in primary care, 2010. Available: https://www.who.int/substance_abuse/publications/assist/en/ [Accessed 2 Dec 2019].
- 29 Krebs EE, Lorenz KA, Bair MJ, *et al.* Development and initial validation of the PEG, a three-item scale assessing pain intensity and interference. *J Gen Intern Med* 2009;24:733–8.
- 30 Von Korff M, DeBar LL, Krebs EE, *et al.* Graded chronic pain scale revised: mild, bothersome, and high-impact chronic pain. *Pain* 2020;161:651–61.
- 31 George SZ, Beneciuk JM, Bialosky JE, *et al.* Development of a Review-of-Systems screening tool for orthopaedic physical therapists: results from the optimal screening for prediction of referral and outcome (OSPRO) cohort. *J Orthop Sports Phys Ther* 2015;45:512–26.
- 32 George SZ, Beneciuk JM, Lentz TA, *et al.* Optimal screening for prediction of referral and outcome (OSPRO) for musculoskeletal pain conditions: results from the validation cohort. *J Orthop Sports Phys Ther* 2018;48:460–75.
- 33 Lentz TA, Beneciuk JM, Bialosky JE, *et al.* Development of a yellow flag assessment tool for orthopaedic physical therapists: results from the optimal screening for prediction of referral and outcome (OSPRO) cohort. *J Orthop Sports Phys Ther* 2016;46:327–43.
- 34 Cohen S, Kamarck T, Mermelstein R. A global measure of perceived stress. *J Health Soc Behav* 1983;24:385–96.
- 35 Jensen MP, Keefe FJ, Lefebvre JC, *et al.* One- and two-item measures of pain beliefs and coping strategies. *Pain* 2003;104:453–69.
- 36 Nicholas MK. The pain self-efficacy questionnaire: taking pain into account. *Eur J Pain* 2007;11:153–63.
- 37 Cruz-Almeida Y, Fillingim RB. Can quantitative sensory testing move us closer to mechanism-based pain management? *Pain Med* 2014;15:61–72.
- 38 Persson AL, Brogårdh C, Sjölund BH. Tender or not tender: test-retest repeatability of pressure pain thresholds in the trapezius and deltoid muscles of healthy women. *J Rehabil Med* 2004;36:17–27.
- 39 Harris PA, Taylor R, Thielke R, *et al.* Research electronic data capture (REDCap)--a metadata-driven methodology and workflow process for providing translational research informatics support. *J Biomed Inform* 2009;42:377–81.
- 40 Chow SC, Chang M. *Adaptive design methods in clinical trials*. 2nd ed. New York: Chapman and Hall/CRC Press, Taylor & Francis, 2011.
- 41 Chow S-C, Wang H, Shao J. *Sample size calculations in clinical research*. Chapman and Hall/CRC, 2007.
- 42 Gallagher EJ, Liebman M, Bijur PE. Prospective validation of clinically important changes in pain severity measured on a visual analog scale. *Ann Emerg Med* 2001;38:633–8.
- 43 Chan A-W, Tetzlaff JM, Gøtzsche PC, *et al.* SPIRIT 2013 explanation and elaboration: guidance for protocols of clinical trials. *BMJ* 2013;346:e7586.
- 44 Chow S-C. Adaptive clinical trial design. *Annu Rev Med* 2014;65:405–15.
- 45 Becker WC, Dorflinger L, Edmond SN, *et al.* Barriers and facilitators to use of non-pharmacological treatments in chronic pain. *BMC Fam Pract* 2017;18:41.
- 46 Thomas ER, Zeliadt SB, Coggeshall S, *et al.* Does offering battlefield acupuncture lead to subsequent use of traditional acupuncture? *Med Care* 2020;58 Suppl 2 9S:S108–15.
- 47 Council of Colleges of Acupuncture and Oriental Medicine. Clean needle technique manual. 7th ed. United States: 2020. Available: https://www.ccaom.org/ccaom/CNT_Manual.asp [Accessed 6 Apr 2021].
- 48 Dorsher PT. Myofascial referred-pain data provide physiologic evidence of acupuncture meridians. *J Pain* 2009;10:723–31.
- 49 Nielsen A, Anderson B, Citkovitz C, *et al.* Developing and employing a 'responsive manualization' in the 'Acupuncture Approaches to Decrease Disparities in Outcomes of Pain Treatment' comparative effectiveness study. *Acupunct Med* 2019;37:184–91.
- 50 Lee WW, Burelbach AE, Fosnocht D. Hispanic and non-Hispanic white patient pain management expectations. *Am J Emerg Med* 2001;19:549–50.
- 51 Hoppe JA, McStay C, Sun BC, *et al.* Emergency department attending physician variation in opioid prescribing in low acuity back pain. *West J Emerg Med* 2017;18:1135–42.

Form
M0345

DUKE UNIVERSITY HEALTH SYSTEM

Consent to Participate in a Research StudyEmergency Department Acupuncture for Musculoskeletal Pain
Management**CONCISE SUMMARY**

The purpose of this study is to measure how well acupuncture (the insertion of very thin needles through your skin at strategic points on your body) improves pain and function, as well as its feasibility, acceptability, and safety in the Emergency Department (ED).

If you agree to participate in this study, you will have an initial assessment with a pain threshold test, study questionnaires, and optional blood draw. You will be randomly assigned to receive either one of two types of acupuncture or no acupuncture. Acupuncture will be performed by a North Carolina Licensed Acupuncturist while in the ED. One hour after your group assignment you will complete a second pain threshold test, study questionnaires, and optional blood draw. After your ED visit, if you are assigned to acupuncture you will attend acupuncture at an outpatient clinic twice a week for 4 weeks. You will be asked to complete questionnaires at 2 and 4 weeks after your ED visit. If you are assigned no acupuncture, you will be asked not to receive any acupuncture for 4 weeks after your ED visit, and you will only complete the questionnaires. Your data and samples collected for this study may be stored and shared for future research.

Risks associated with acupuncture include pain at the site of needle insertion, bruising, and bleeding. There are risks related to loss of confidentiality, but every effort will be made to safeguard your information.

If you are interested in learning more about this study, please continue reading below.

You are being asked to take part in this research study because you presented to the Emergency Department with a musculoskeletal pain (pain that affects the muscles, bones, and/or tissues that connect them).

Research studies are voluntary and include only people who choose to take part. Please read this consent form carefully and take your time making your decision. As your study doctor or study staff discusses this consent form with you, please ask him/her to explain any words or information that you do not clearly understand. We encourage you to talk with your family and friends before you decide to take part in this research study. The nature of the study, risks, inconveniences, discomforts, and other important information about the study are listed below.

Please tell the study doctor or staff if you are taking part in another research study.

WHO WILL BE MY DOCTOR ON THIS STUDY?

If you decide to participate, Dr. Stephanie Eucker will be your doctor for the study and will be in contact with your regular health care provider throughout the time that you are in the study and afterwards, if needed. This study is sponsored by the Duke Endowment and the Substance Abuse and Mental Health Services Administration (SAMHSA).

Form
M0345**Consent to Participate in a Research Study**

Emergency Department Acupuncture for Musculoskeletal Pain Management

WHY IS THIS STUDY BEING DONE?

Musculoskeletal pain is one of the most common reasons for doctors' office and emergency department visits. Painful episodes can lead to significant disability and ongoing disruption of daily functioning.

Acupuncture involves the insertion of very thin needles through your skin at strategic points on your body. It is not well-understood how acupuncture works, but there is some evidence that it is safe and cost-effective in outpatient settings for management of acute and chronic pain, particularly of the back, neck, and shoulder. Acupuncture is most often used to treat pain and anxiety in the clinic setting, but has not routinely been used in the ED.

The goal of this study is to measure how well acupuncture relieves pain and improves function, as well as its feasibility, acceptability, and safety in the ED.

HOW MANY PEOPLE WILL TAKE PART IN THIS STUDY?

Approximately 750 people will take part in this study at Duke.

WHAT IS INVOLVED IN THE STUDY?

If you agree to be in this study, you will be asked to sign and date this consent form. If you sign this form electronically, you will be asked to provide your email address so that a copy of it can be emailed to you. By providing your email address for use in the consent process, you are at potential risk for a loss of confidentiality because email is not a secure means of communication.

You will undergo an Initial Assessment that includes the following:

- Pressure Pain Threshold test. This is a non-invasive test that uses a device that applies pressure to your body (shoulder muscle) to measure the amount of pressure that causes mild pain.
- Blood draw for biomarker measurements that is optional (approximately 3-4 teaspoons)
- Completion of questionnaires

You will be randomly assigned, like drawing numbers from a hat, to one of three groups listed below. You have an equal chance of being assigned to each group and a 2 out of 3 chance of getting acupuncture.

- Ear (auricular) acupuncture – placement of needles in up to 10 sites total in both ears
- Peripheral acupuncture – placement of needles in up to 30 specific sites in the head, neck, arms from the shoulders to the hands, and legs from the knees to the feet
- Control – no acupuncture

The acupuncture treatments will be performed in an Emergency Department examination room by a North Carolina Licensed Acupuncturist. Acupuncture consists of inserting single use, sterile, acupuncture needles, measuring 0.16-0.22mm in thickness (about the thickness of a hair) and varying in length from 1.5-5cm (0.5-2 inches). The skin will be cleansed prior to needle insertion, and needles will be placed utilizing clean needle technique. Needle insertion depth will vary between 0.5 cm (0.2 inches) and 4.5 cm (1.8 inches) (through the skin and sometimes muscle layers only), depending on the area of

Form
M0345

DUKE UNIVERSITY HEALTH SYSTEM

Consent to Participate in a Research Study**Emergency Department Acupuncture for Musculoskeletal Pain Management**

treatment. Needles will be retained for up to 30 minutes. Auricular acupuncture needles are much smaller, 0.15 cm (0.06 inches) in length (only through the skin), attached to a bandaid adhesive so they can be retained for up to 4 days. All needles can be removed earlier at your request. All acupuncture performed adheres to the guidelines of Clean Needle Technique as required by North Carolina law.

Regardless of which group you are assigned to, you will also receive the usual care for musculoskeletal pain, including medications and other non-medication pain treatments such as ice/heat at the discretion your ED doctor.

You will receive the usual care for acute pain management as determined by your ED doctor. If you are assigned to the control group you will not receive acupuncture. If you are assigned to one of the acupuncture groups, you will receive acupuncture in the ED. The session will last approximately 15-30 minutes.

One hour after you have been assigned to a treatment group you will be asked to complete a brief questionnaire, a pressure pain threshold test, and have an optional second blood draw (3-4 teaspoons) for research for future biomarker analysis.

Blood collection for biomarkers in this study is optional. Biomarkers are substances in the body that can be indicators of a disease. You do not have to allow for research blood draws to participate in this study. If you agree to blood collection, samples will be taken during and one hour after completion of the initial assessment in the ED.

Please initial below indicating whether or not you agree to research blood draws.

_____ Yes, I agree to undergo a blood draw for research purposes.

_____ No, I do not want to undergo a blood draw for research purposes.

If you are assigned to an acupuncture group, we will provide you with information and free access to group-based acupuncture in the outpatient Integrative Medicine clinic for the next 4 weeks. There will be two sessions per week, and each session will last approximately 30 minutes. You will be asked to provide your phone number and email address to schedule your acupuncture visits. Your name and contact information will be entered into an online scheduling program, Microsoft Bookings. This program will be used to schedule your acupuncture appointments and send appointment reminders.

If you are assigned to the control group, you will not receive acupuncture in the ED, and we ask that you not receive acupuncture for 4 weeks after you sign this consent form. Current research supports that acupuncture will still be effective in treating pain after that time, should you choose to seek acupuncture treatment after participation in the study.

Form
M0345

DUKE UNIVERSITY HEALTH SYSTEM

Consent to Participate in a Research Study

Emergency Department Acupuncture for Musculoskeletal Pain Management

Regardless of which group you are assigned to, you will be asked to complete questionnaires about your pain, pain management, and quality of life at 2 and 4 weeks after your ED visit. You will receive emails at these time points with a link to the study questionnaires. If you have not completed these within a few days of receiving the email you may be contacted by a member of the study team via text message and/or phone to ensure you are able to access the link. If you have trouble with the link or prefer to answer by phone the questionnaires may be completed via phone.

You may be asked to complete an interview via phone. Interviews will be conducted by a member of the study team. We will ask you questions about your experience with the study and research study materials. This interview will last approximately 15 to 30 minutes. The interviews will be recorded. Recordings may contain your name and age. Your interview will be transcribed within 2 to 3 months and any identifying information will be deleted. Recordings will be stored until the data analysis for this study is complete, approximately 2 years, at which time they will be deleted. Recordings and transcriptions of interviews will be stored in a secure folder that only the study team has access to.

HOW LONG WILL I BE IN THIS STUDY?

If you agree to be in this study, your participation will last approximately 4 weeks. You can choose to stop participating at any time without penalty or loss of any benefits to which you are entitled. However, if you decide to stop participating in the study, we encourage you to talk to your doctor first.

WHAT ARE THE RISKS OF THE STUDY?

Acupuncture may occasionally result in slight bruising, pain at the site of needle insertion, and bleeding, dizziness, and numbness or tingling near the needling sites that may last a few days.

Infection, excess bleeding, or fainting are also possible, although unlikely.

Risks associated with drawing blood from your arm include momentary discomfort and/or bruising. Infection, excess bleeding, clotting, or fainting are also possible, although unlikely.

There is also a risk of loss of confidentiality of your private information. Every effort will be made to protect your information, but this cannot be guaranteed. By providing your email address you are at potential risk for a loss of confidentiality because email is not a secure means of communication.

ARE THERE BENEFITS TO TAKING PART IN THE STUDY?

There may be direct medical benefits to you for participating in this study. If you are assigned to an acupuncture group, you may have decreased pain but that cannot be guaranteed. A potential benefit of this study is to gain knowledge that may lead to improved pain management in the ED in the future. If you are randomized to the no acupuncture group there is no expected benefit above standard of care.

WILL MY INFORMATION BE KEPT CONFIDENTIAL?

Participation in research involves some loss of privacy. We will do our best to make sure that information about you is kept confidential, but we cannot guarantee total confidentiality. By providing your email address for use in the consent process, you are at risk for a loss of confidentiality because

Form
M0345

DUKE UNIVERSITY HEALTH SYSTEM

Consent to Participate in a Research Study**Emergency Department Acupuncture for Musculoskeletal Pain Management**

email is not a secure means of communication. Your personal information may be viewed by individuals involved in this research and may be seen by people including those collaborating, funding, and regulating the study. Your date of birth, dates related to your ED visit, acupuncture visits, and any tests or procedures you have had will be collected for this study. Your name, phone number, and email address will be shared with Microsoft Bookings. We will share only the minimum necessary information in order to conduct the research. Your personal information may also be shared if required by law.

Your records may be reviewed in order to meet federal or state regulations. Reviewers may include representatives from the Food and Drug Administration, the Substance Abuse and Mental Health Services Administration (SAMHSA), the Duke University Health System Institutional Review Board, and others as appropriate. If any of these groups review your research record, they may also need to review your entire medical record.

The study results will be retained in your research record for at least six years after the study is completed.

While the information and data resulting from this study may be presented at scientific meetings or published in a scientific journal, your identity will not be revealed.

Some recipients who receive your health information might not have to follow the same privacy rules. Once your information is shared outside of DUHS, we cannot guarantee that it will remain private. If you decide to share private information with anyone not involved in the study, the federal law designed to protect your health information privacy may no longer apply to the information you have shared. Other laws may or may not protect sharing of private health information.

WHAT ARE THE COSTS TO YOU?

You or your insurance provider will be responsible and billed for all costs related to your routine medical care, including copayments and deductibles. Routine medical care services are those that you would have received for your condition if you were not participating in this research study. Not all services are covered by insurance. The amount of your out-of-pocket expense will depend on your insurance plan.

Services and procedures that are done solely for research purposes will be paid for by the study. This includes the cost of both inpatient and outpatient acupuncture and costs related to blood draws (if applicable). Please talk with the PI/study team about the specific services and procedures that will be paid for, and the ones for which you or your insurance will be responsible.

We will monitor your DUHS patient care charges to make sure that costs are directed appropriately. If you have any questions or concerns about appropriate billing, contact your study team coordinator so that he/she can help find a resolution.

Form
M0345**Consent to Participate in a Research Study**

Emergency Department Acupuncture for Musculoskeletal Pain Management

WHAT ABOUT COMPENSATION?

You will receive a \$30 Amazon gift card after you complete the 4-week follow up survey. Gift cards may be sent via email or text message after the surveys have been completed.

WHAT ABOUT RESEARCH RELATED INJURIES?

Immediate necessary medical care is available at Duke University Medical Center in the event that you are injured as a direct result of your participation in this research study. However, there is no commitment by Duke University, Duke University Health System, Inc., or your Duke physicians to provide monetary compensation or free medical care to you in the event of a study-related injury.

For questions about the study or research-related injury, contact Dr. Eucker at 919-684-5537 during regular business hours and at 919-684-8111 after hours and on weekends and holidays and ask that she be paged.

WHAT ABOUT MY RIGHTS TO DECLINE PARTICIPATION OR WITHDRAW FROM THE STUDY?

You may choose not to be in the study, or, if you agree to be in the study, you may withdraw from the study at any time. If you withdraw from the study, no new data about you will be collected for study purposes unless the data concerns an adverse event (a bad effect) related to the study. If such an adverse event occurs, we may need to review your entire medical record. All data that has already been collected will be maintained.

Your decision not to participate or to withdraw from the study will not involve any penalty or loss of benefits to which you are entitled and will not affect your access to health care at Duke. If you do decide to withdraw from the research study, we ask that you contact Dr. Eucker in writing and let her know that you are withdrawing from the study. Her mailing address is DUMC Box 3096, Durham, NC, 27710.

We will tell you about new information that may affect your health, welfare, or willingness to stay in this study.

Your study doctor may decide to take you off this study if she determines that it is no longer in your best interest to continue.

If you agree to allow your blood to be kept for future research with identifying information that could link your sample to you, you are free to change your mind at any time. We ask that you contact Dr. Eucker in writing and let her know you are withdrawing your permission for your identifiable blood samples to be used for future research. Her mailing address is listed above. At that time, we will ask you to indicate in writing if you want the unused identifiable blood destroyed or if your samples (having all identifying information removed that would link the sample to you) could be used for other research.

Your samples and data may be stored and shared for future research without additional informed consent if identifiable private information, such as your name and medical record number, are removed. If your

Form
M0345



Consent to Participate in a Research Study
Emergency Department Acupuncture for Musculoskeletal Pain
Management

identifying information is removed from your samples or data, we will no longer be able to identify and destroy them.

A description of this clinical trial will be available on <https://clinicaltrials.gov/> as required by U.S. Law. This Web site will not include information that can identify you. At most, the Web site will include a summary of the results. You can search this Web site at any time.

WHOM DO I CALL IF I HAVE QUESTIONS OR PROBLEMS?

For questions about the study or a research-related injury, or if you have problems, concerns, questions or suggestions about the research, contact Dr. Eucker at 919-684-5537 during regular business hours and at 919-684-8111 after hours and on weekends and holidays and ask that she be paged.

For questions about your rights as a research participant, to discuss problems, concerns or suggestions related to the research, or to obtain information or offer input about the research, contact the Duke University Health System Institutional Review Board (IRB) Office at (919) 668-5111.

STATEMENT OF CONSENT

"The purpose of this study, procedures to be followed, risks and benefits have been explained to me. I have been allowed to ask questions, and my questions have been answered to my satisfaction. I have been told whom to contact if I have questions, to discuss problems, concerns, or suggestions related to the research, or to obtain information or offer input about the research. I have read this consent form and agree to be in this study, with the understanding that I may withdraw at any time. I have been told that I will be given a signed and dated copy of this consent form."

Signature of Subject

Date

Time

Signature of Witness (if applicable)

Date

Time

Signature of Person Obtaining Consent

Date

Time