

BMJ Open Incidence of renal replacement therapy for diabetic nephropathy in the Netherlands: Dutch diabetes estimates (DUDE)-3

Peter R van Dijk,¹ Anneke Kramer,² Susan J J Logtenberg,^{1,3} Andries J Hoitsma,^{4,5} Nanne Kleefstra,^{1,3} Kitty J Jager,² Henk J G Bilo^{1,3,6}

To cite: van Dijk PR, Kramer A, Logtenberg SJJ, et al. Incidence of renal replacement therapy for diabetic nephropathy in the Netherlands: Dutch diabetes estimates (DUDE)-3. *BMJ Open* 2015;**5**:e005624. doi:10.1136/bmjopen-2014-005624

► Prepublication history and additional material is available. To view please visit the journal (<http://dx.doi.org/10.1136/bmjopen-2014-005624>).

Received 5 May 2014

Revised 25 August 2014

Accepted 26 August 2014



CrossMark

For numbered affiliations see end of article.

Correspondence to

Peter R van Dijk;
P.r.van.Dijk@isala.nl

ABSTRACT

Objectives: Describe the incidence, prevalence and survival of patients needing renal replacement therapy (RRT) for end-stage renal disease (ESRD) due to diabetes mellitus (DM)-related glomerulosclerosis or nephropathy (diabetic nephropathy, DN) in the Netherlands.

Design: Using the national registry for RRT (RENINE-registry), data of all Dutch individuals initiating RRT for ESRD and having DN as primary diagnosis in the period 2000–2012 were obtained.

Setting: Observational study in the Netherlands.

Patients: Patients with ESRD needing RRT for DN.

Outcome measurements: Age and gender adjusted incidence and prevalence of RRT for DN in the period 2000–2012. In addition, trends in time and patient's survival were examined.

Results: The prevalence of DM in the general population increased from approximately 466 000 in 2000 to 815 000 in 2011. The number of individuals who started RRT with DN as primary diagnosis was 17.4 per million population (pmp) in 2000 and 19.1 pmp in 2012, with an annual percentage change (APC) of 0.8% (95% CI –0.4 to 2.0). For RRT due to type 1 DN, the incidence decreased from 7.3 to 3.5 pmp (APC –4.8%, 95% CI –6.5 to –3.1) while it increased for type 2 DN from 10.1 to 15.6 pmp (APC 3.1%, 95% CI 1.3 to 4.8). After 2009, the prevalence of RRT for DN remained stable (APC 1.0%, 95% CI –0.4 to 2.5). Compared to the period 2000–2004, patients initiating RRT and dialysis in 2005–2009 had better survival, HRs 0.8 (95% CI 0.7 to 0.8) and 0.8 (95% CI 0.7 to 0.9), respectively, while survival after kidney transplantation remained stable, HR 0.8, 95% CI 0.5 to 1.1).

Conclusions: Over the last decade, the incidence of RRT for DN was stable, with a decrease in RRT due to type 1 DN and an increase due to type 2 DN, while survival increased.

INTRODUCTION

Diabetic nephropathy (DN) is considered to be the main cause of end-stage renal disease

Strengths and limitations of this study

- This study reports the incidence, prevalence and survival of patients needing renal replacement therapy (RRT) for end-stage renal disease (ESRD) due to diabetic nephropathy (DN).
- Nationwide data from 2000 to 2012 for DN due to both type 1 and type 2 diabetes mellitus are reported.
- It cannot be ruled out that some of the patients with unknown or missing primary causes of RRT actually had RRT for ESRD due to DN.

(ESRD) in many countries, with an ever increasing incidence and prevalence.^{1 2} In general, its frequency as cause of ESRD has bypassed all other causes and ESRD due to DN is seen as one of the main reasons for the accelerating growth in patients with ESRD, thus contributing not only to an important loss of quality of life and early death but also to a vast increase in health expenditure worldwide.^{3 4}

In the USA, for instance, the incidence of ESRD due to DN was 156 per million population (pmp) in 2011.⁴ Recently, a report from France found an incidence of 56 pmp while this number was 27.6 pmp in the UK.^{5 6} Although the incidence of renal replacement therapy (RRT) due to DN seemed to increase in most countries, in line with the increasing incidence of diabetes mellitus (DM) among the population, other countries reported a stabilisation or even a decrease.^{5–9}

The aim of the present study was to report any recent changes in the incidence and prevalence of RRT for DN in the Netherlands, taking into account the increased prevalence of DM in the general population from approximately 260 000 in 1993, 466 000 in 2000 to 815 000 in 2011.^{10 11} Furthermore, we analysed the

survival rates on RRT for ESRD due to DN between the periods 2000–2004 and 2005–2009.

METHODS

Study design and aims

This nationwide cohort study is the third ‘Dutch diabetes estimates’ (DUDE) study. The DUDE studies aim to investigate the magnitude and impact of DM and its complications in the Netherlands. Aim of the present study was to investigate the course of the incidence and prevalence of RRT for ESRD due to DN in the Netherlands in the period 2000–2012. Furthermore, survival among patients on RRT for ESRD due to DN in this period was analysed.

Data collection

Data from the RENINE registry were used. All Dutch centres (n=69) providing RRT collaborated and shared their individual patient’s data with the RENINE registry on a continuous basis, yielding a nationwide and 100% registration of treated patients.¹²

In the Dutch RENINE registry, information including primary renal disease necessitating RRT is registered according to the coding of the European Renal Association European Dialysis and Transplant Association (ERA-EDTA) registry. In this registry, DM as primary renal disease is registered under the EDTA codes 80 (Diabetes glomerulosclerosis or diabetic nephropathy—Type 1 diabetes mellitus) and 81 (Diabetes glomerulosclerosis or diabetic nephropathy—Type 2 diabetes mellitus).^{13 14} In this manuscript, patients with either code 80 or code 81 as primary cause of ESRD necessitating RRT will be further referenced as patients with type 1 or type 2 DN (T1DN or T2DN, respectively).

In the RENINE registry, RRT is defined as dialysis (peritoneal or haemodialysis) or kidney (also including kidney-pancreas Tx) transplantation (Tx). Patients are only registered in the RENINE registry if they are using RRT for >30 days. The incidence of RRT was defined as the number of new patients per year and prevalence was defined as the number of patients alive and on RRT on 31 December of the relevant year. Both crude and the age and gender adjusted incidence, using the European Union (27 countries) age and gender distribution, were calculated. For both of these items, the mid-year population (30 June) was used as denominator. Owing to unknown or missing data regarding the cause of ESRD in some centres, additional sensitivity analyses were performed for the crude incidence in order to compare outcomes between centres with <20% missing (n=38) and ≥20% (n=31) missing data.

Statistical analysis

Trends in time were analysed with Joinpoint regression. The Joinpoint regression technique allows identification of points in time where a significant change in the linear slope of a trend occurs. The analysis starts with

zero joinpoints (ie, a straight line) and then tests whether one or more joinpoints are significantly different and must be added to the model.¹⁵ The slope of a trend was calculated using the observed rate as the outcome variable and the year as the explanatory variable. The analysis was adjusted for changes in the age and gender distribution of the population. The annual percentage change (APC) was subsequently computed by the formula $APC = [\exp(\beta) - 1] \times 100$, where β denotes the regression coefficient representing the estimated effect of time on the rate. A negative APC describes a decreasing trend and a positive APC describes an increasing trend. Joinpoint regression software (V.3.3) provided by the Surveillance Research Programme of the US National Cancer Institute was used to examine whether trends were linear.

Statistical analysis of unadjusted and adjusted survival, for patients starting RRT between 2000 and 2009, was performed by Cox proportional hazards regression. For the analysis of patient survival on dialysis the first day on dialysis was the starting point, the event studied was death and reasons for censoring were recovery of renal function, loss to follow-up, end-of-follow-up time and kidney transplantation. For the analysis of patient and graft survival after transplantation, the date of the first transplant was defined as the first day of follow-up. For the analysis of patient survival after transplantation, death was the event studied and for graft survival the events were graft failure and death. Reasons for censoring were loss-to-follow-up and end-of-follow-up period. SAS V.9.1 software was used for all statistical analyses.

RESULTS

Crude incidence and prevalence

In 2012, the total Dutch population consisted of 16 730 348 persons.¹⁶ Of all 2011 persons (120.2 pmp) starting RRT in the year 2012, 328 (19.6 pmp) needed RRT for ESRD due to DN. Over time, the crude incidence increased from 15.6 pmp in 2000 to 19.6 pmp in 2012, increasing by 1.9% annually.

The crude prevalence of patients using RRT for all causes in the year 2012 was 15 449 (923.4 pmp) of which 1817 (108.6 pmp) used RRT for ESRD due to DN. Over time, the crude prevalence increased at a slower rate: by 6.7% annually from 2000 to 2009 and by 2.6% annually from 2009 to 2012.

The crude incidence and prevalence of RRT for DN, both T1DN and T2DN, non-DN and unknown/missing causes of ESRD are presented in online supplementary appendix 1.

Adjusted incidence

The age and gender adjusted incidence of RRT for ESRD due to non-DN causes increased from 2000 to 2008 by 2% annually and remained stable after 2008 (table 1). As for RRT in ESRD due to DN, the incidence was stable over time, but trends were different by type of

Table 1 Age and gender adjusted incidence of RRT for ESRD due to DN per million population during the period 2000–2012 in the Netherlands

Cause	Year												APC % (95% CI)	
	2000	2001	2002	2003	2004	2005	2006	2007	2008	2009	2010	2011		2012
All	102.5	105.8	108.9	109.9	112.3	113.7	117.7	119.1	124.8	121.3	119.1	116.9	117.6	2000–2008: 2.2 (1.9 to 2.5) 2008–2012: –1.3 (–2.1 to –0.5)
Non-DN	63.9	67.7	70.2	74.6	73.5	72.0	73.5	74.0	78.3	78.9	72.0	71.0	70.0	2000–2008: 2.0 (0.8 to 3.2) 2008–2012: –2.8 (–6.0 to 0.5)
Unknown/missing	21.2	20.2	19.5	16.8	18.7	23.1	24.5	22.7	23.8	23.8	28.2	26.0	28.5	2000–2012: 3.4 (1.8 to 5.0)
DN both	17.4	17.9	19.2	18.6	20.2	18.6	19.7	22.3	22.7	18.6	18.9	19.9	19.1	2000–2012: 0.8 (–0.4 to 2.0)
T1DN	7.3	6.5	5.4	5.8	5.9	5.9	5.9	5.4	5.0	3.6	4.5	4.4	3.5	2000–2012: –4.8 (–6.5 to –3.1)
T2DN	10.1	11.5	13.8	12.7	14.2	12.7	13.7	17.0	17.7	15.0	14.4	15.4	15.6	2000–2012: 3.1 (1.3 to 4.8)

Categories may not add up because of rounding off.

APC, annual percentage change; DN, diabetic nephropathy; ESRD, end-stage renal disease; RRT, renal replacement therapy; T1DN, type 1 DN; T2DN, type 2 DN.

diabetes. There was an increase in incidence of RRT for T2DN from 2000 to 2012 by 3.1% annually, while the incidence of RRT for ESRD due to T1DN decreased in this period by –4.8% annually.

Sensitivity analyses of the adjusted incidence in centres with <20% and ≥20% missing or unknown primary causes of ESRD also showed an increasing incidence for T2DN and decreasing incidence for T1DN in both groups. Among centres with <20% missing or unknown primary causes of ESRD, there was an annual increase of 2.1% in the incidence of RRT for ESRD due to both forms of DN in the period 2000 to 2012; however, it is stabilised in centres with ≥20% missing or unknown primary causes of ESRD (see online supplementary appendix 2A–D).

Adjusted prevalence

The age and gender adjusted prevalence of RRT for ESRD due to non-DN causes increased from 2000 to 2009 by 2.6% annually and remained stable after 2009 (table 2). Prevalence of RRT for DN increased from 2000 to 2009 by 5.8% annually and remained stable after 2009. For T2DN, prevalence increased at a declining rate: 12.4% in the period 2000 to 2003 and 8.7% in the period 2003 to 2009, and remained stable after 2009. For T1DN, prevalence increased from 2000 to 2010 by 1.2% and stabilised from 2010 onwards.

Treatment modality

From 2000 to 2012, adjusted incidence of dialysis for DN was stable due to an annual increase of 3.1% for T2DN and a decrease of –6.1% for T1DN in this period (see online supplementary appendix 3A). Incidence of Tx for both forms of DN increased by 11.1% annually: 10.1% for T2 DN and 8.8% for T1DN. Prevalence of dialysis for DN increased from 2000 to 2008 by 5.9% annually and remained stable afterwards. For T2DN, prevalence of dialysis increased at a declining rate: from 2000 to 2003 by 12.5% annually to 7.2% in the period 2003 to 2009, and was stable after 2009. For T1DN, an initial decrease of prevalence in the period 2000 to 2010 by –1.3% annually seemed to disappear after 2010. Prevalence of patients with Tx increased from 2000 to 2004 by 4.6% annually and from 2004 to 2012 by 7.7%. For T1DN there was an annual increase of 3.5% throughout the follow-up period, while for T2DN prevalence only increased between 2002 and 2010 by 18.7% annually (see online supplementary appendix 3B).

Survival

Survival and subsequent HRs were significantly worse for patients on RRT for ESRD due to DN compared to a non-DN reference population (table 3). Compared to patients with RRT for ESRD due to T2DN, patients with T1DN had a worse survival on dialysis (both for haemodialysis and peritoneal dialysis, see online supplementary appendix 4A,B) but not after kidney transplantation

Table 2 Age and gender adjusted prevalence of RRT for ESRD due to DN per million population during the period 2000–2012 in the Netherlands

Cause	Year												APC % (95% CI)	
	2000	2001	2002	2003	2004	2005	2006	2007	2008	2009	2010	2011		2012
All	650.5	655.9	681.6	697.9	719.9	746.5	778.2	798.2	826.7	854.2	871.1	883.6	899.2	2000–2009: 3.2 (3 to 3.5) 2009–2012: 1.9 (0.5 to 3.2)
Non-DN	488.1	492.0	510.3	521.6	535.9	549.5	567.9	578.2	594.3	610.4	617.2	620.4	624.8	2000–2009: 2.6 (2.5 to 2.8) 2009–2012: 0.8 (0.0 to 1.7)
Unknown/missing	101.2	100.7	103.7	103.9	107.4	116.5	125.6	129.4	135.5	143.3	153.0	159.6	169.9	2000–2003: 1.0 (−1.2 to 3.3) 2003–2012: 5.6 (5.2 to 6.0)
DN both	61.3	63.2	67.7	72.3	76.7	80.6	84.8	90.6	96.8	100.5	100.9	103.6	104.5	2000–2009: 5.8 (5.6 to 6.1) 2009–2012: 1.0 (−0.4 to 2.5)
T1DN	33.5	32.5	33.2	33.0	33.6	34.6	35.5	35.8	36.3	35.8	36.8	36.6	35.9	2000–2010: 1.2 (0.8 to 1.7) 2010–2012: −1.1 (−6.6 to 4.8)
T2DN	27.8	30.7	34.5	39.4	43.1	46.0	49.3	54.8	60.5	64.7	64.1	67.0	68.6	2000–2003: 12.4 (9.6 to 15.3) 2003–2009: 8.7 (7.4 to 9.9) 2009–2012: 1.9 (−0.7 to 4.5)

Categories may not add up because of rounding off.

APC, annual percentage change; DN, diabetic nephropathy; ESRD, end-stage renal disease; RRT, renal replacement therapy; T1DN, type 1 DN; T2DN, type 2 DN.

(also for graft survival, see online supplementary appendix 4C).

When comparing survival between patients who started RRT for ESRD due to DN in the period 2000–2004 and 2005–2009, patients in the latter time frame had significantly better outcomes (adjusted HR 0.76, 95% CI 0.69 to 0.84). Their survival on dialysis was better (HR 0.77, 95% CI 0.70 to 0.85) while there was a non-significant trend towards improvement in patient's survival Tx (HR 0.77 95% CI 0.54 to 1.10). Both for T1DN and T2DN, survival on RRT improved in the period 2005–2009 as compared to 2000–2004: HR 0.75 (95% CI 0.62 to 0.90) and HR 0.77 (95% CI 0.69 to 0.87), respectively (see online supplementary appendix 4).

DISCUSSION

We report a 4.8% average yearly decrease in age and gender adjusted annual incidence of RRT for ESRD due to T1DN and a 3.1% increase for T2DN in the period 2000 to 2012. The combined incidence of RRT for ESRD due to both types of DN has been stable over the period. Together with an increased survival over these years, this may indicate that the number of patients needing RRT for ESRD due to DN is stable and that these patients now live longer while on RRT.

These findings are remarkable, given the current increase in patients with T2DM in the Netherlands. Best estimations for T2DM show an increase from approximately 260 000 in 1993, to 466 000 in 2000 and to 815 000 in 2011.^{10 11} Although trends cannot be extrapolated one-on-one from observational data, we hypothesise it may suggest that the presently advocated approach with emphasis on early preventive measures (including lifestyle advices, stricter control of blood pressure and lipid profile disturbances, and improved glycaemic regulation), increased use of renoprotective medication (including ACE inhibitors or angiotensin II receptor antagonists), improved accessibility to RRT facilities or changes in healthcare delivery in the Netherlands may have had a positive impact.^{10 17–20}

Nevertheless, other explanations for our findings should be discussed. First and foremost, centres with unknown or missing data regarding the primary cause of ESRD may have confounded our findings. Indeed, sensitivity analyses showed different trends in the age and gender adjusted incidence of RRT for ESRD due to DN between centres with <20% and ≥20% missing data, but the ones with fewer missing data confirmed our results. Second, a lag time in diagnosis of DN and development of ESRD should be taken into account. However, the transition rate from each stage of DN to the next one, of approximately 2.5% per year, should imply a higher prevalence of T2DN-related ESRD in the present study and this is quickly increasing disease prevalence in the general population.²¹ Third, the results could also indicate that, in line with other countries, in recent years more often a non-dialytic, conservative

Table 3 Patient survival probabilities and crude HRs and age and gender adjusted HRs of patients starting RRT, subdivided into RRT (both dialysis and Tx), dialysis and kidney transplantation in the period 2000–2010

	Adjusted 1 year survival (95% CI)	Adjusted 5 year survival (95% CI)	Unadjusted 5 year survival (95% CI)	Crude HR (95% CI)	Adjusted HR (95% CI)
Survival on RRT					
No DN	90.2 (89.7 to 90.7)	62.1 (61.1 to 63.1)	53.6 (53.0 to 54.1)	1 (ref)	1 (ref)
DN both	88.1 (87.2 to 89.1)	49.7 (47.9 to 51.6)	39.3 (38.6 to 40.1)	1.50 (1.43 to 1.58)	1.45 (1.38 to 1.53)
T1DN	84.6 (82.2 to 87.0)	41.1 (37.7 to 44.8)	44.5 (43.0 to 45.9)	1.29 (1.18 to 1.40)	1.83 (1.68 to 2.00)
T2DN	89.2 (88.1 to 90.3)	52.6 (50.5 to 54.8)	37.1 (36.3 to 37.9)	1.61 (1.52 to 1.70)	1.35 (1.27 to 1.43)
Survival on dialysis					
No DN	88.3 (87.7 to 88.9)	53.7 (52.5 to 55.0)	44.4 (43.9 to 44.9)	1 (ref)	1 (ref)
DN both	86.5 (85.4 to 87.7)	43.3 (41.3 to 45.4)	35.0 (34.3 to 35.7)	1.26 (1.19 to 1.33)	1.32 (1.25 to 1.39)
T1DN	83.2 (80.7 to 85.9)	33.8 (30.2 to 38.0)	35.0 (33.7 to 36.3)	1.28 (1.17 to 1.41)	1.72 (1.57 to 1.88)
T2DN	87.6 (86.3 to 88.8)	46.4 (44.1 to 48.8)	35.0 (34.2 to 35.8)	1.25 (1.18 to 1.32)	1.21 (1.14 to 1.29)
Survival after kidney Tx					
No DN	97.5 (97.1 to 98.0)	90.8 (90.0 to 91.8)	87.4 (86.5 to 88.3)	1 (ref)	1 (ref)
DN both	94.4 (92.9 to 96.0)	83.2 (80.4 to 86.0)	74.6 (71.7 to 77.3)	2.07 (1.77 to 2.42)	1.85 (1.58 to 2.17)
T1DN	94.7 (92.5 to 97.0)	84.4 (80.7 to 88.4)	81.7 (77.8 to 85.0)	1.49 (1.20 to 1.86)	1.76 (1.41 to 2.20)
T2DN	94.2 (92.2 to 96.3)	82.1 (78.4 to 86.1)	65.2 (60.9 to 69.1)	3.09 (2.52 to 3.80)	1.94 (1.58 to 2.38)

Categories may not add up because of rounding off. Dialysis is defined as both peritoneal dialysis or haemodialysis. For survival probabilities subdivided into haemodialysis and peritoneal dialysis please see online supplementary appendix 4. Data on graft survival is presented in online supplementary appendix 4.

DN, diabetic nephropathy; RRT, renal replacement therapy; T1DN, type 1 DN; T2DN, type 2 DN; Tx, kidney transplantation.

treatment is chosen for patients with ESRD due to DN.^{22–23} Finally, the dramatic scenario of increasing mortality among patients with DM before initiating RRT could be hypothesised. However, as the life expectancy of Dutch patients with T2DM is reported to be stable, at a level equal to the general population, this latter scenario is not quite conceivable.²⁰

In a previous Dutch report until 2002, the incidence rates of RRT were also increasing for T2DN and decreasing for T1DN.²⁴ The current report extends the studied period and adds to these observations by demonstrating a stabilisation of ESRD due to DN. This is in accordance with reports from other registries: Sørensen *et al*⁹ reported a stabilisation in Danish patients with DM who were referred for RRT and recently a French study

showed that in the period 2007 to 2011, there was a decreasing incidence of RRT for ESRD due to T1DN and after an increase until 2009, a stabilisation for T2DN.⁶ A report from the USA also showed a decreasing incidence of ESRD treatment for DN.²⁵

Nevertheless, notable differences in the rate and course of the incidence of RRT for ESRD due to DN between countries exist. In 2005, the mean annual increase of the age and gender adjusted incidence of RRT for T2DN in 10 European registries was estimated to be 12%, with a variation of 7–21%.¹³ Worldwide, the relative incidence rate of ESRD due to diabetes was reported as ranging from less than 20% in Russia and Norway to 60% in Singapore or Mexico.⁴ When comparing 2011 incidence data with other developed European countries with an equal (~7.5%) diabetes prevalence in the general population and Japan and the USA (table 4), the differences are still remarkable.^{4–26} Thus it seems that these differences may not be solely explained by variations in diabetes prevalence in the general population between countries. Finding explanations and subsequent solutions for these differences might help to alleviate the burden of ESRD due to DN.

Analysis of survival in the present study confirms previous findings that mortality is higher among patients with RRT for ESRD due to DN, in particular T1DN, compared to patients with RRT for ESRD due to a non-DN cause, implying an additional detrimental effect of diabetes induced end-organ damage.^{27–28} Regarding survival by modality, Schrijen *et al* reported almost the same crude HR for mortality (1.51) for patients with ESRD due to DN on dialysis in seven other European countries.²⁸ In accordance with previous reports, we found that renal transplantation yielded higher

Table 4 Incidence rates of ESRD due to DN: differences between countries

Country	Diabetes national prevalence (%)	Incidence rate of ESRD due to DN (pmp)
Belgium	6.63	37.8
Denmark	7.51	29.7
France	7.30	32.4
Japan	11.2	131.3
The Netherlands	7.31	18.6
Norway	5.85	14.5
Spain	8.14	29.3
Sweden	5.71	29.7
USA	10.94	159.2

Based on 2011 data derived from refs 4 and 26.

DN, diabetic nephropathy; ESRD, end-stage renal disease; pmp, per million population.

(approximately a doubling) survival rates than dialysis.⁴ Although individual patient data is lacking, this may well be due to the selection of healthier participants for renal transplantation as compared to dialysis. It should be noted that the survival rates among patients with DN using RRT have increased during the last decade. Although there could be different explanations for this finding, that is, better control of (cardiovascular) risk factors, improved dialysis techniques or a higher number of renal transplantations, this important finding adds to the aforementioned hypothesis that changes within the present healthcare system and delivery also contribute to improved care for patients with ESRD.

This study is subject to some limitations. As mentioned before, it cannot be ruled out that some of the patients with unknown/missing primary causes of RRT indeed had DN. It should also be taken into account that the classification of diabetes as primary cause of ESRD into T1DN and T2DN was made primarily by the attending nephrologist. Furthermore, the diagnosis of DN was made clinically and was rarely based on biopsy findings. Although this may have induced errors in classification, it reflects clinical practice. Finally, as no (longitudinal) individual patient data on health status was available we can only hypothesise about the influence of healthcare or patient-related characteristics on, for example, differences between patients with T1DN and T2DN. One possible hypothesis is that earlier identification of T1DN patients, with subsequent earlier surveillance for proteinuria and an earlier start of renoprotective medications, may explain observed differences between T1DN and T2DN. Furthermore, patients with T1DN, most likely being younger, are more often deemed suitable for Tx.

In conclusion, the incidence of RRT for ESRD due to DN was stable in the Netherlands over the last decade reflecting a decrease for T1DN and an increase for T2DN. The overall incidence and prevalence are also relatively low in comparison with most developed countries. Taken together with improved survival rates this may suggest that changes in healthcare have been successful with regard to the prevention and subsequent treatment of ESRD due to DN.

Author affiliations

¹Diabetes Centre, Isala, Zwolle, The Netherlands

²Department of Medical Informatics, Academic Medical Center, University of Amsterdam, ERA-EDTA Registry, Amsterdam, The Netherlands

³Department of Internal Medicine, University of Groningen, University Medical Centre Groningen, Groningen, The Netherlands

⁴Department of Nephrology, Radboud University Medical Centre, Nijmegen, The Netherlands

⁵RENINE Registry, Leiden, The Netherlands

⁶Department of Internal Medicine, Isala, Zwolle, The Netherlands

Contributors PRvD designed the study, researched data and wrote the first version of the manuscript and is responsible for the final version of the manuscript. AK researched data and contributed to writing the manuscript. SJJL, AJH, NK, KJJ, HJGB all contributed to the writing and critically revising the intellectual content of the manuscript. All authors contributed to the conception and design of the manuscript and interpretation of the data. All authors approved the final version of the manuscript for publication.

Funding This research received no specific grant from any funding agency in the public, commercial or not-for-profit sectors.

Competing interests None.

Provenance and peer review Not commissioned; externally peer reviewed.

Data sharing statement No additional data are available.

Open Access This is an Open Access article distributed in accordance with the Creative Commons Attribution Non Commercial (CC BY-NC 4.0) license, which permits others to distribute, remix, adapt, build upon this work non-commercially, and license their derivative works on different terms, provided the original work is properly cited and the use is non-commercial. See: <http://creativecommons.org/licenses/by-nc/4.0/>

REFERENCES

- Gall MA, Nielsen FS, Smidt UM, *et al.* The course of kidney function in type 2 (non-insulin-dependent) diabetic patients with diabetic nephropathy. *Diabetologia* 1993;36:1071–8.
- Hallan SI, Coresh J, Astor BC, *et al.* International comparison of the relationship of chronic kidney disease prevalence and ESRD risk. *J Am Soc Nephrol* 2006;17:2275–84.
- Stel VS, van de Luitgaarden MWM, Wanner C, *et al.* The 2008 ERA-EDTA Registry Annual Report—a précis. *NDT Plus* 2011;4:1–13.
- Collins AJ, Foley RN, Chavers B, *et al.* United States Renal Data System 2011 Annual Data Report: atlas of chronic kidney disease & end-stage renal disease in the United States. *Am J Kidney Dis* 2012;59:A7, e1–420.
- Hill CJ, Fogarty DG. Changing trends in end-stage renal disease due to diabetes in the United Kingdom. *J Ren Care* 2012;38(Suppl 1):12–22.
- Assogba FGA, Couchoud C, Hannedouche T, *et al.* Trends in the epidemiology and care of diabetes mellitus-related end-stage renal disease in France, 2007–2011. *Diabetologia* 2014;57:718–28.
- Grace BS, Clayton P, McDonald SP. Increases in renal replacement therapy in Australia and New Zealand: understanding trends in diabetic nephropathy. *Nephrol Carlton Vic* 2012;17:76–84.
- De Boer IH, Rue TC, Hall YN, *et al.* Temporal trends in the prevalence of diabetic kidney disease in the United States. *JAMA* 2011;305:2532–9.
- Sørensen VR, Hansen PM, Heaf J, *et al.* Stabilized incidence of diabetic patients referred for renal replacement therapy in Denmark. *Kidney Int* 2006;70:187–91.
- Houweling ST, Kleefstra N, Meulepas M, *et al.* New estimates of diabetes prevalence in the Netherlands, based on information from 5 million subjects (DUDE-1). *Diabetologia* 2013;56:291.
- Baan CA, Bonneux L, Ruwaard D, *et al.* The prevalence of diabetes mellitus in the Netherlands: a quantitative review. *Eur J Public Health* 1998;8:210–16.
- de Charro FT, Ramsteyn PG. RENINE, a relational registry. Registratie Nierfunctievervanging Nederland. *Nephrol Dial Transplant* 1995;10:436–41.
- Van Dijk PCW, Jager KJ, Stengel B, *et al.* Renal replacement therapy for diabetic end-stage renal disease: data from 10 registries in Europe (1991–2000). *Kidney Int* 2005;67:1489–99.
- Van Dijk PC, Jager KJ, de Charro F, *et al.* Renal replacement therapy in Europe: the results of a collaborative effort by the ERA-EDTA registry and six national or regional registries. *Nephrol Dial Transplant* 2001;16:1120–9.
- Kim HJ, Fay MP, Feuer EJ, *et al.* Permutation tests for Joinpoint regression with applications to cancer rates. *Stat Med* 2000;19:335–51.
- <http://statline.cbs.nl/StatWeb/publication/?VW=T&DM=SLNL&PA=37713&HD=140429-1042> (accessed 1 May 2014).
- van Hateren KJJ, Drion I, Kleefstra N, *et al.* A prospective observational study of quality of diabetes care in a shared care setting: trends and age differences (ZODIAC-19). *BMJ Open* 2012;2:pii: e001387.
- Parving H-H, Hovind P. Microalbuminuria in type 1 and type 2 diabetes mellitus: evidence with angiotensin converting enzyme inhibitors and angiotensin II receptor blockers for treating early and preventing clinical nephropathy. *Curr Hypertens Rep* 2002;4:387–93.
- Ubink-Veltmaat LJ, Bilo HJG, Groenier KH, *et al.* Prevalence, incidence and mortality of type 2 diabetes mellitus revisited: a prospective population-based study in The Netherlands (ZODIAC-1). *Eur J Epidemiol* 2003;18:793–800.
- Lutgers HL, Gerrits EG, Sluiter WJ, *et al.* Life expectancy in a large cohort of type 2 diabetes patients treated in primary care (ZODIAC-10). *PLoS ONE* 2009;4:e6817.

21. Adler AI, Stevens RJ, Manley SE, *et al.* Development and progression of nephropathy in type 2 diabetes: the United Kingdom Prospective Diabetes Study (UKPDS 64). *Kidney Int* 2003;63:225–32.
22. Jassal SV, Kelman EE, Watson D. Non-dialysis care: an important component of care for elderly individuals with advanced stages of chronic kidney disease. *Nephron Clin Pract* 2011;119(Suppl 1):c5–9.
23. Crail S, Walker R, Brown M, *et al.* Renal supportive and palliative care: position statement. *Nephrol Carlton Vic* 2013;18:393–400.
24. Gansevoort RT, van der Heij B, Stegeman CA, *et al.* Trends in the incidence of treated end-stage renal failure in the Netherlands: hope for the future? *Kidney Int Suppl* 2004:S7–10.
25. Burrows NR, Li Y, Geiss LS. Incidence of treatment for end-stage renal disease among individuals with diabetes in the U.S. continues to decline. *Diabetes Care* 2010;33:73–7.
26. International Diabetes Federation. *IDF diabetes atlas*. 5th edn. Brussels, Belgium: International Diabetes Federation, 2011.
27. Lok CE, Oliver MJ, Rothwell DM, *et al.* The growing volume of diabetes-related dialysis: a population based study. *Nephrol Dial Transplant* 2004;19:3098–103.
28. Schroijen MA, van de Luitgaarden MWM, Noordzij M, *et al.* Survival in dialysis patients is different between patients with diabetes as primary renal disease and patients with diabetes as a co-morbid condition. *Diabetologia* 2013;56:1949–57.

Appendix 1. Crude incidence and prevalence rates of RRT due to DN per million population during the period 2000-2010 in the Netherlands

	Year													APC % (95% CI)
	2000	2001	2002	2003	2004	2005	2006	2007	2008	2009	2010	2011	2012	
Incidence														
All	92.6	97.6	98.9	100.3	103.3	106.3	110.7	113.8	120.9	118.7	117.7	117.6	120.2	2000-2008: 3.0 (2.6;3.4) 2008-2012: 0.3 (-0.8;1.4)
Non-DN	58.0	63.1	64.2	68.1	67.9	67.4	69.1	70.6	75.8	77.3	71.1	71.2	71.5	2000-2009: 2.5 (1.7;3.4) 2009-2012: -2.5 (-6.8;1.9)
Unknown/ Missing	19.1	18.3	17.3	15.1	16.9	21.4	22.9	21.6	22.8	23.1	27.9	26.3	29.0	2000-2003: -4.2 (-14.4;7.1) 2003-2012: 6.5 (4.4;8.7)
DN Both	15.6	16.5	17.3	16.9	18.7	17.3	18.8	21.7	22.2	18.5	18.7	20.1	19.6	2000-2012: 1.9 (0.7;3.2)
T1DN	6.8	6.2	5.1	5.6	5.7	5.8	5.9	5.3	5.1	3.6	4.5	4.4	3.6	2000-2012: -4.1 (-5.9;-2.4)
T2DN	8.9	10.3	12.2	11.3	13.0	11.6	12.9	16.4	17.1	14.9	14.2	15.7	16.0	2000-2012: 4.5 (2.7;6.2)
Prevalence														
All	611.6	628.7	647.3	666.0	691.3	721.7	758.0	785.0	820.2	855.3	882.7	911.2	923.4	2000-2003: 2.8 (2.3;3.4) 2003-2009: 4.2 (4.0;4.5) 2009-2012: 2.7 (2.1;3.2)
Non-DN	461.5	473.9	487.3	500.5	517.0	533.9	555.7	570.8	591.4	613.1	627.2	641.2	642.4	2000-2003: 2.7 (2.2;3.2) 2003-2009: 3.4 (3.2;3.6) 2009-2012: 1.7 (1.3;2.2)
Unknown/ Missing	93.2	94.9	96.5	97.5	101.5	110.8	120.5	125.6	132.8	141.6	153.0	162.3	172.4	2000-2003: 1.4 (-0.6;3.4) 2003-2012: 6.5 (6.1;6.9)
DN Both	56.9	60.0	63.5	68.0	72.8	77.0	81.9	88.6	96.0	100.7	102.5	107.6	108.6	2000-2009: 6.7 (6.3;7.0) 2009-2012: 2.6 (0.9;4.3)
T1DN	32.5	32.3	32.6	32.6	33.4	34.6	35.7	36.2	37.2	36.8	38.0	38.6	37.4	2000-2003: 0.1 (-1.6;1.9) 2003-2007: 3.0 (1.2;4.8) 2006-2012: 0.6 (-0.1;1.4)
T2DN	24.4	27.7	30.9	35.4	39.4	42.4	46.1	52.4	58.7	63.9	64.5	69.1	71.3	2000-2008: 11.4 (10.6;12.3) 2008-2012: 4.8 (2.6;7.1)

Categories may not add up because of rounding off. Abbreviations: APC; annual percentage change; DN, diabetic nephropathy; T1DN, type 1 DN; T2DN, type 2 DN.

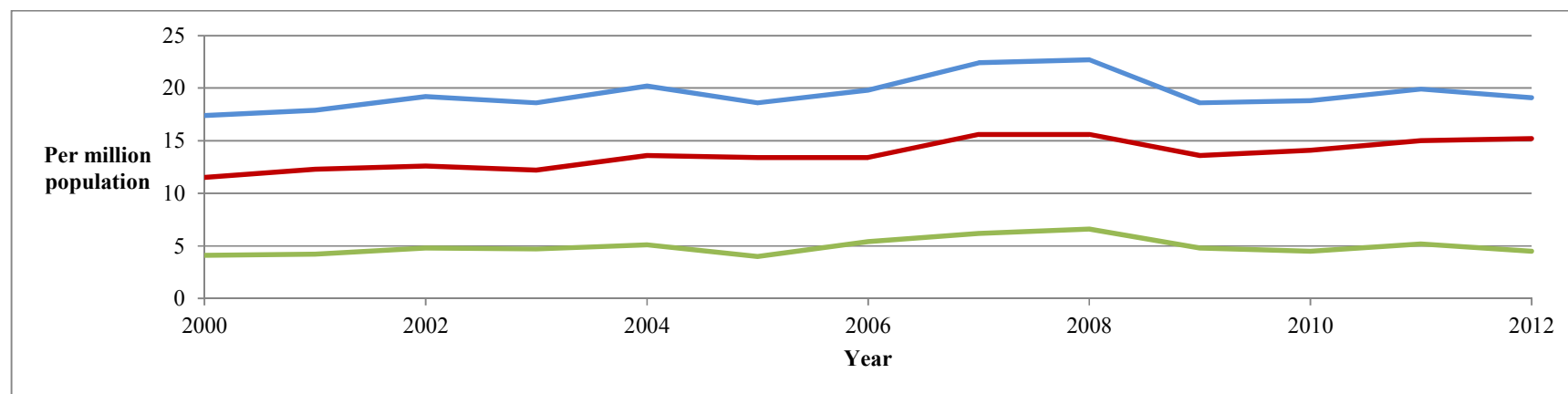
Appendix 2. Additional sensitivity analysis

A. Age and gender adjusted incidence of RRT for all causes, non-DN and DN (both T1DN and T2DN) for centres with <20% (and ≥ 20% (green line) missing primary causes of RRT.

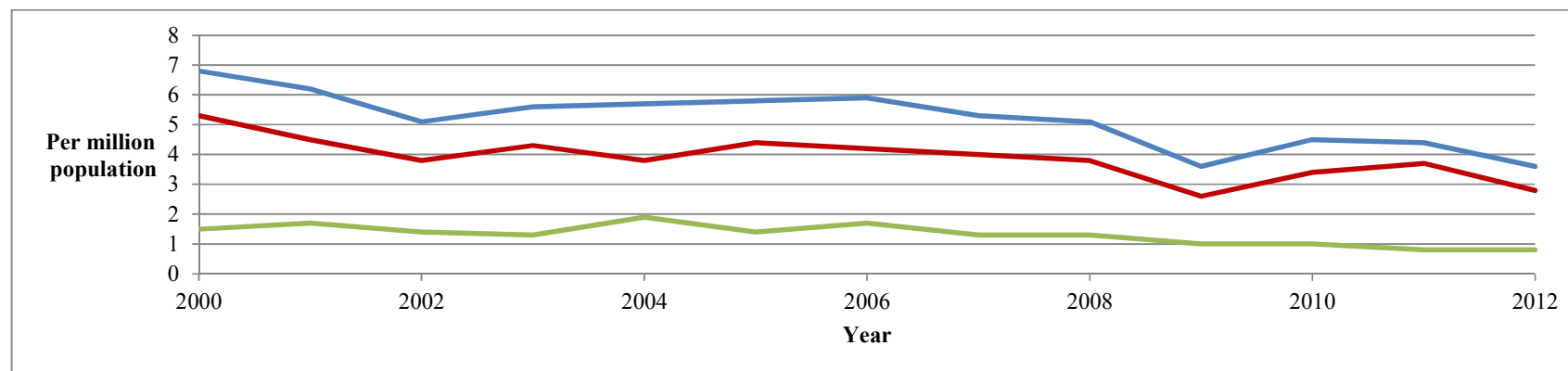
	Year													APC % (95% CI)
	2000	2001	2002	2003	2004	2005	2006	2007	2008	2009	2010	2011	2012	
<20% missing														
All	65.0	68.0	69.4	69.0	72.8	74.7	75.5	79.6	82.7	79.7	78.7	79.5	81.0	2000-2008: 2.7 (2.2;3.2) 2008-2012: -0.4 (-1.8;1.0)
Non-DN	43.6	46.3	47.8	49.2	50.8	50.7	51.3	54.0	57.6	55.2	53.0	52.9	53.7	2000-2008: 2.9 (2.2;3.6) 2008-2012: -1.5 (-3.4;0.5)
Unknown/ Missing	9.9	9.5	8.9	7.5	8.7	10.5	10.8	9.8	9.5	11.0	11.7	11.6	12.2	2000-2012: 2.6 (0.9;4.2)
DN Both	11.5	12.3	12.6	12.2	13.6	13.4	13.4	15.6	15.6	13.6	14.1	15.0	15.2	2000-2012: 2.1 (1.2;3.1)
T1DN	5.3	4.5	3.8	4.3	3.8	4.4	4.2	4.0	3.8	2.6	3.4	3.7	2.8	2000-2012: -3.7 (-5.7;-1.7)
T2DN	6.2	7.9	8.8	7.9	9.8	9.0	9.2	11.7	11.8	11.0	10.7	11.3	12.4	2000-2012: 4.7 (3.1;6.3)
≥20% missing														
All	27.8	29.7	29.4	31.2	30.6	31.5	35.1	34.4	38.1	38.8	39.0	38.1	39.0	2000-2012: 3.1 (2.5;3.7)
Non-DN	14.4	16.8	16.3	18.9	17.1	16.7	17.7	16.7	18.1	22.0	18.2	18.4	17.8	2000-2012: 1.5 (0.2;2.9)
Unknown/ Missing	9.2	8.8	8.4	7.7	8.2	10.8	12.0	11.6	13.3	12.2	16.2	14.7	16.8	2000-2003: -3.1 (-16.0;11.9) 2003-2012: 8.5 (5.7;11.4)
DN Both	4.1	4.2	4.8	4.7	5.1	4.0	5.4	6.2	6.6	4.8	4.5	5.2	4.5	2000-2012: 1.3 (-1.1;3.8)
T1DN	1.5	1.7	1.4	1.3	1.9	1.4	1.7	1.3	1.3	1.0	1.0	0.8	0.8	2000-2006: 0.5 (-6.1;7.6) 2006-2012: -11.4 (-17.2;-5.2)
T2DN	2.6	2.4	3.4	3.5	3.2	2.6	3.7	4.8	5.2	3.9	3.4	4.4	3.6	2000-2012: 3.9 (0.7;7.1)

Categories may not add up because of rounding off. Abbreviations: APC; annual percentage change; DN, diabetic nephropathy; T1DN, type 1 DN; T2DN, type 2 DN.

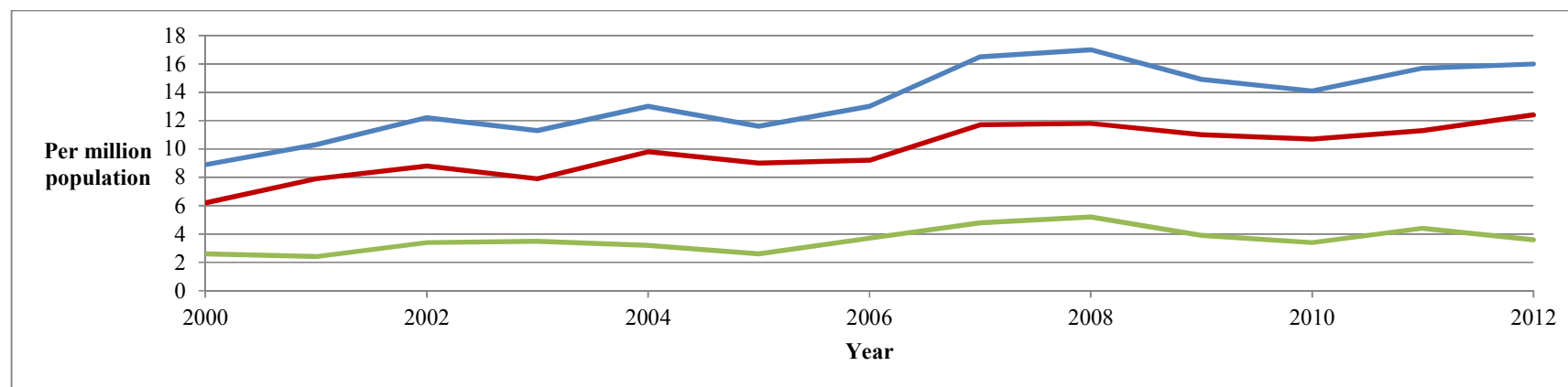
B. Visual representation of the course of the incidence of RRT for DN (both forms) for all centres (blue line) and centres with <20% (red line) or $\geq 20\%$ (green line) missing primary causes of RRT.



C. Visual representation of the course of the incidence of RRT for T1DN comparing all centres (blue line) and centres with <20% (red line) or $\geq 20\%$ (green line) missing primary causes of RRT.



D. Visual representation of the course of the incidence of RRT for T2DN comparing all centres (blue line) and centres with <20% (red line) or $\geq 20\%$ (green line) missing primary causes of RRT.



Appendix 3.

A. Contribution of each treatment modality (dialysis or Tx) to the adjusted incidence of RRT due to DN.

	Year													AAPC % (95% CI)
	2000	2001	2002	2003	2004	2005	2006	2007	2008	2009	2010	2011	2012	
Dialysis														
All	90.5	94.9	97.2	96.3	100.2	99.5	103.2	101.4	104.3	102.6	98.2	94.5	96.2	2000-2008: 1.5 (0.8;2.2) 2008-2012: -2.6 (-4.5;-0.6) 2000-2003: 4.4 (-0.1;9.1)
Non-DN	56.4	60.6	62.8	65.1	65.7	63.2	65.6	62.8	66.2	66.2	62.1	59.1	58.9	2003-2009: 0.0 (-2.0;2.0) 2009-2012: -3.7 (-7.8;0.7)
Unknown/ Missing	17.7	17.6	16.8	13.7	15.5	19.1	19.1	17.6	16.9	18.9	19.1	17.6	19.8	2000-2012: 1.2 (-0.3;2.8)
DN Both	16.5	16.7	17.5	17.5	18.9	17.1	18.4	21.1	21.2	17.4	17.0	17.9	17.5	2000-2012: 0.6 (-0.8;1.9)
T1DN	6.9	5.8	4.7	5.5	5.5	5.5	5.3	5.1	4.6	3.1	3.5	3.2	2.9	2000-2012: -6.1 (-8.1;-4.1)
T2DN	9.6	10.8	12.8	12.1	13.5	11.6	13.2	16.0	16.6	14.3	13.5	14.6	14.6	2000-2012: 3.1 (1.3;4.8)
Haemodialysis														
All	58.4	60.8	69.0	68.4	75.4	75.2	76.9	77.5	78.6	80.1	76.2	76.1	78.2	2000-2004: 6.9 (3.9;9.9) 2004-2012: 0.4 (-0.5;1.4)
Non-DN	36.1	37.6	43.4	45.2	49.3	47.0	47.5	46.9	49.3	50.9	47.5	47.9	47.4	2000-2004: 7.7 (4.4;11.2) 2004-2012: -0.1 (-1.2;1.0)
Unknown/ Missing	11.6	11.9	12.6	10.4	12.0	14.4	15.2	13.5	12.6	14.6	15.7	14.1	16.1	2000-2012: 2.6 (1.2;4.1)
DN Both	10.7	11.3	13.0	12.8	14.1	13.8	14.2	17.2	16.7	14.5	13.0	14.1	14.7	2000-2007: 5.7 (2.7;8.8) 2007-2012: -3.2 (-7.7;1.6)
T1DN	3.7	3.4	2.8	3.7	3.5	4.0	3.9	3.8	3.5	2.2	2.1	2.5	2.5	2000-2007: 2.5 (-3.2;8.4) 2007-2010: -19.3 (-47;22.9) 2010-2012: 12.6 (-26.1;71.5)
T2DN	7.1	7.9	10.2	9.0	10.6	9.8	10.3	13.3	13.2	12.4	10.9	11.6	12.2	2000-2012: 4.0 (2.0;6.0)
Peritoneal dialysis														

All	32.1	34.1	28.2	28.0	24.7	24.2	26.3	23.9	25.7	22.5	22.0	18.5	18.0	2000-2012: -4.4 (-5.5;-3.2)
Non-DN	20.2	22.9	19.4	19.9	16.5	16.3	18.1	15.9	16.9	15.3	14.6	11.2	11.5	2000-2012: -4.8 (-6.1;-3.3)
Unknown/ Missing	6.1	5.8	4.2	3.3	3.5	4.6	3.9	4.1	4.3	4.4	3.4	3.5	3.7	2000-2012: -2.8 (-5.4;0.2)
DN Both	5.7	5.4	4.6	4.8	4.8	3.3	4.3	3.9	4.6	2.9	4.0	3.8	2.8	2000-2012: -4.3 (-6.5;-2)
T1DN	3.2	2.5	1.9	1.7	2.0	1.6	1.3	1.3	1.1	0.9	1.4	0.7	0.4	2000-2012: -12.1 (-15.3;-8.6)
T2DN	2.5	2.9	2.6	3.0	2.8	1.8	2.9	2.6	3.4	2.0	2.6	3.0	2.4	2000-2012: -0.3 (-3.2;2.7)
Tx														
All	4.6	3.5	3.9	4.4	4.6	6.4	7.7	8.3	10.8	11.4	13.1	12.9	14.3	2000-2002: -9.2 (-29.2;16.4) 2002-2008: 19.9 (13.4;26.7)
Non-DN	2.1	0.8	0.6	1.6	1.7	2.9	3.9	2.6	4.4	2.8	6.7	5.9	7.0	2000-2012: 18.1 (10.3;26.5)
Unknown/ Missing	0.0	0.0	0.0	0.1	0.1	0.1	0.0	0.1	0.1	0.1	0.2	0.1	0.2	-
DN Both	2.2	2.3	2.9	2.6	2.6	3.1	3.4	5.4	6.0	8.1	5.3	5.7	6.5	2000-2012: 11.1 (7.6;14.6)
T1DN	0.3	0.4	0.4	0.2	0.2	0.2	0.4	0.2	0.3	0.4	0.9	1.1	0.6	2000-2012: 8.8 (0.6;17.7)
T2DN	0.3	0.4	0.4	0.2	0.3	0.4	0.4	0.3	0.3	0.5	1.0	1.2	0.8	2000-2012: 10.1 (3.4;17.2)

Categories may not add up because of rounding off. Abbreviations: APC; annual percentage change; DN, diabetic nephropathy; T1DN, type 1 DN; T2DN, type 2 DN.

B. Contribution of each treatment modality (dialysis or Tx) to the adjusted prevalence of RRT due to DN.

	Year													AAPC % (95% CI)
	2000	2001	2002	2003	2004	2005	2006	2007	2008	2009	2010	2011	2012	
Dialysis														
All	333.6	334.4	343.9	348.1	353.3	361.9	375.9	375.0	383.5	393.8	390.9	384.9	378.2	2000-2009: 2 (1.7;2.2) 2009-2012: -1.1 (-2.4;0.2)
Non-DN	228.4	230.9	237.8	241.2	242.7	245.4	254.6	250.4	253.6	259.0	256.1	250.1	244.2	2000-2009: 1.4 (1.1;1.7) 2009-2012: -2 (-3.6;-0.3)
Unknown/ Missing	62.2	59.3	58.7	55.2	55.4	59.8	61.8	62.0	62.5	66.3	68.3	67.4	68.5	2000-2003: -3.4 (-7;0.3) 2003-2012: 2.5 (1.8;3.2)
DN Both	42.9	44.2	47.5	51.7	55.2	56.7	59.5	62.6	67.4	68.6	66.5	67.5	65.5	2000-2008: 5.9 (5.2;6.6) 2008-2012: -0.5 (-2.3;1.4)
T1DN	17.7	16.5	16.2	16.0	16.6	16.5	16.5	15.4	15.6	14.7	14.9	14.1	12.4	2000-2010: -1.3 (-2.1;-0.5) 2010-2012: -8.6 (-17.4;1.3)
T2DN	25.2	27.7	31.3	35.7	38.7	40.3	43.1	47.2	51.8	53.9	51.6	53.4	53.1	2000-2003: 12.5 (8.9;16.3) 2003-2009: 7.2 (5.6;8.8) 2009-2012: -0.7 (-3.9;2.6)
Haemodialysis														
All	236.1	233.1	244.9	252.5	266.0	276.5	292.1	295.8	308.1	322.3	322.2	325.1	321.5	2000-2009: 3.8 (3.3;4.3) 2009-2012: 0.2 (-2.4;2.9)
Non-DN	160.7	159.6	167.5	172.3	180.3	185.5	195.6	194.5	202.0	210.8	210.0	210.2	206.9	2000-2009: 3.3 (2.8;3.7) 2009-2012: -0.4 (-2.7;2)
Unknown/ Missing	44.4	41.7	42.3	41.1	42.8	46.1	48.7	49.3	49.8	53.2	56.0	56.6	57.6	2000-2003: -1.3 (-4.9;2.5) 2003-2012: 3.9 (3.2;4.6)
DN Both	31.0	31.9	35.1	39.1	42.8	44.9	47.8	51.9	56.4	58.3	56.3	58.4	57.1	2000-2008: 8.1 (7.2;8.9) 2008-2012: 0.4 (-1.8;2.7)
T1DN	11.3	10.6	10.7	11.0	11.6	11.7	12.7	12.6	12.7	11.9	11.5	11.5	10.3	2000-2008: 2.3 (0.9;3.7) 2008-2012: -4.6 (-8.3;-0.8)
T2DN	19.6	21.3	24.4	28.1	31.2	33.2	35.2	39.3	43.7	46.4	44.8	46.9	46.7	2000-2008: 10.5 (9.3;11.8) 2008-2012: 1.4 (-1.9;4.9)
Peritoneal dialysis														
All	97.5	101.2	99.0	95.6	87.4	85.3	83.8	79.2	75.4	71.6	68.7	59.8	56.6	2000-2002: 0.3 (-6;7) 2002-2010: -4.6 (-5.4;-3.7)

														2010-2012: -9.6 (-15.3;-3.6)
Non-DN	67.7	71.3	70.3	68.9	62.4	59.8	58.9	55.9	51.6	48.2	46.1	39.9	37.3	2000-2002: 2.3 (-5.9;11.3) 2002-2010: -5.4 (-6.4;-4.3) 2010-2012: -10.7 (-17.9;-2.8)
Unknown/ Missing	17.8	17.6	16.3	14.2	12.5	13.7	13.1	12.6	12.7	13.1	12.3	10.8	10.9	2000-2012: -3.7 (-4.7;-2.6)
DN Both	12.0	12.3	12.3	12.5	12.4	11.8	11.7	10.6	11.0	10.3	10.3	9.1	8.4	2000-2003: 1.5 (-3.1;6.4) 2003-2010: -3.1 (-4.6;-1.5) 2010-2012: -9.1 (-17.3;-0.2)
T1DN	6.4	5.9	5.5	5.0	5.0	4.7	3.8	2.7	3.0	2.8	3.5	2.6	2.0	2000-2012: -8.5 (-10.4;-6.6)
T2DN	5.6	6.4	6.8	7.6	7.4	7.1	7.9	7.9	8.1	7.5	6.8	6.4	6.4	2000-2007: 4.5 (2.1;7) 2007-2012: -5.4 (-9.1;-1.6)
Tx														
All	316.6	321.3	337.3	349.4	366.3	384.2	402.2	423.0	443.0	460.2	480.2	498.6	521.0	2000-2012: 4.4 (4.3;4.6)
Non-DN	259.3	260.9	272.2	280.1	292.9	303.9	313.3	327.7	340.6	351.4	361.2	370.3	380.6	2000-2009: 3.6 (3.4;3.9) 2009-2012: 2.8 (1.2;4.3)
Unknown/ Missing	38.9	41.3	44.9	48.7	51.9	56.5	63.7	67.4	73.0	76.9	84.6	92.1	101.4	2000-2012: 8.3 (8.1;8.6)
DN Both	18.3	19.0	20.2	20.6	21.4	23.8	25.2	28.0	29.4	31.9	34.4	36.2	39.0	2000-2004: 4.6 (3.3;5.9) 2004-2012: 7.7 (7.2;8.1)
T1DN	15.7	16.1	16.9	17.0	17.0	18.1	19.0	20.4	20.7	21.0	21.8	22.5	23.5	2000-2012: 3.5 (3.2;3.8)
T2DN	2.6	2.9	3.2	3.7	4.4	5.7	6.3	7.5	8.7	10.8	12.5	13.7	15.5	2000-2002: 10.7 (-2.7;26) 2002-2010: 18.7 (16.6;20.7) 2010-2012: 10.7 (-2.7;26)

Categories may not add up because of rounding off. Abbreviations: APC; annual percentage change; DN, diabetic nephropathy; T1DN, type 1 DN; T2DN, type 2 DN.

Appendix 4.

A. Patient survival probabilities and crude hazard ratios (HR) and age and gender adjusted HRs of patients starting RRT, subdivided into haemo- and peritoneal dialysis in the period 2000-2010.

		Adjusted 1 year survival (95% CI)	Adjusted 5 year survival (95% CI)	Unadjusted 5 year survival (95% CI)	Crude HR (95%CI)	Adjusted HR (95% CI)
Survival on haemodialysis	No DN	86.6 (85.9 - 87.4)	50.9 (49.5 - 52.5)	39.8 (39.3 - 40.3)	1 (ref)	1 (ref)
	DN both	85.7 (84.4 - 87.0)	42.9 (40.7 - 45.3)	34.0 (33.2 - 34.7)	1.13 (1.07 - 1.20)	1.22 (1.15 - 1.29)
	T1DN	83.1 (80.2 - 86.2)	34.0 (29.8 - 38.8)	32.7 (31.3 - 34.1)	1.17 (1.06 - 1.30)	1.55 (1.40 - 1.72)
	T2DN	86.5 (85.1 - 87.9)	45.6 (43.0 - 48.3)	34.4 (33.5 - 35.2)	1.12 (1.05 - 1.19)	1.13 (1.06 - 1.21)
Survival on peritoneal dialysis	No DN	93.6 (92.6 - 94.6)	61.4 (58.8 - 64.0)	59.7 (58.3 - 61.1)	1 (ref)	1 (ref)
	DN both	88.9 (86.6 - 91.2)	42.3 (37.9 - 47.1)	38.9 (37.2 - 40.6)	1.88 (1.67 - 2.12)	1.84 (1.63 - 2.08)
	T1DN	83.0 (78.0 - 88.3)	32.0 (25.1 - 40.8)	41.0 (38.0 - 44.0)	1.94 (1.61 - 2.32)	2.53 (2.10 - 3.04)
	T2DN	91.3 (88.9 - 93.8)	46.8 (41.6 - 52.7)	37.8 (35.7 - 39.8)	1.86 (1.61 - 2.14)	1.61 (1.39 - 1.85)

Categories may not add up because of rounding off. Abbreviations: CI, confidence interval; DN, diabetic nephropathy; HR, hazard ratios; T1DN, type 1 DN; T2DN, type 2 DN.

B. Age and gender adjusted hazard ratios (HR) of patients starting RRT in 2005-2009 when compared to 2000-2004. Subdivided into RRT (both dialysis and kidney transplantation), dialysis (both haemo- and peritoneal dialysis) haemodialysis, peritoneal dialysis and kidney transplantation.

	Survival on RRT Adjusted HR (95% CI)	Survival on dialysis Adjusted HR (95% CI)	Survival on haemodialysis Adjusted HR (95% CI)	Survival on peritoneal dialysis Adjusted HR (95% CI)	Survival after kidney transplantation Adjusted HR (95% CI)
All	0.78 (0.74 - 0.81)	0.80 (0.77 - 0.84)	0.81 (0.77 - 0.85)	0.77 (0.69 - 0.86)	0.91 (0.78 - 1.06)
Non-DN	0.80 (0.75 - 0.84)	0.82 (0.77 - 0.87)	0.83 (0.78 - 0.89)	0.75 (0.64 - 0.86)	0.98 (0.82 - 1.18)
Unknown/ Missing	0.74 (0.67 - 0.82)	0.78 (0.71 - 0.87)	0.76 (0.68 - 0.86)	0.90 (0.71 - 1.16)	0.99 (0.67 - 1.47)
DN Both	0.76 (0.69 - 0.84)	0.77 (0.70 - 0.85)	0.79 (0.71 - 0.89)	0.70 (0.57 - 0.87)	0.77 (0.54 - 1.10)
T1DN	0.75 (0.62 - 0.90)	0.77 (0.64 - 0.93)	0.74 (0.59 - 0.93)	0.86 (0.60 - 1.25)	0.59 (0.34 - 1.01)
T2DN	0.77 (0.69 - 0.87)	0.79 (0.70 - 0.88)	0.82 (0.72 - 0.94)	0.66 (0.50 - 0.86)	0.92 (0.57 - 1.50)

Categories may not add up because of rounding off. Dialysis is defined as both peritoneal- or haemodialysis. Abbreviations: CI. confidence interval; DN, diabetic nephropathy; T1DN, type 1 DN; T2DN, type 2 DN; Tx. kidney transplantation.

C. Graft survival probabilities and crude hazard ratios (HR) and age and gender adjusted HRs of patients having a renal transplantation in the period 2000-2010.

		Adjusted 1 year survival (95% CI)	Adjusted 5 year survival (95% CI)	Unadjusted 5 year survival (95% CI)	Crude HR (95%CI)	Adjusted HR (95% CI)
Graft survival	No DN	90.6 (89.8 - 91.5)	77.0 (75.7 - 78.3)	75.8 (74.8 - 76.8)	1 (ref)	1 (ref)
	DN both	86.7 (84.1 - 89.4)	68.8 (65.1 - 72.8)	65.6 (62.9 - 68.2)	1.53 (1.33 - 1.75)	1.43 (1.25 - 1.64)
	T1DN	90.7 (87.5 - 93.9)	74.7 (69.9 - 79.7)	74.1 (70.2 - 77.6)	1.11 (0.92 - 1.34)	1.14 (0.95 - 1.38)
	T2DN	82.4 (78.1 - 86.8)	62.1 (56.4 - 68.4)	54.4 (50.8 - 57.9)	2.28 (1.91 - 2.73)	1.85 (1.54 - 2.22)

Categories may not add up because of rounding off. Abbreviations: CI, confidence interval; DN, diabetic nephropathy; HR, hazard ratios; T1DN, type 1 DN; T2DN, type 2 DN.