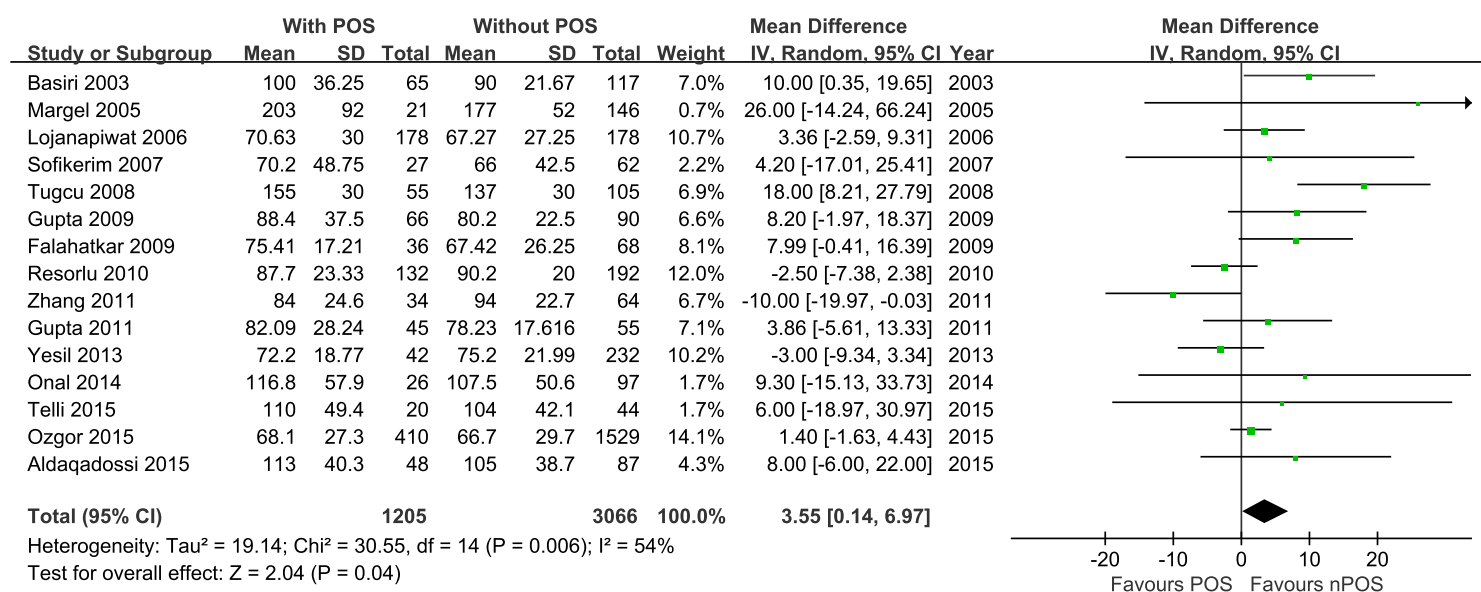
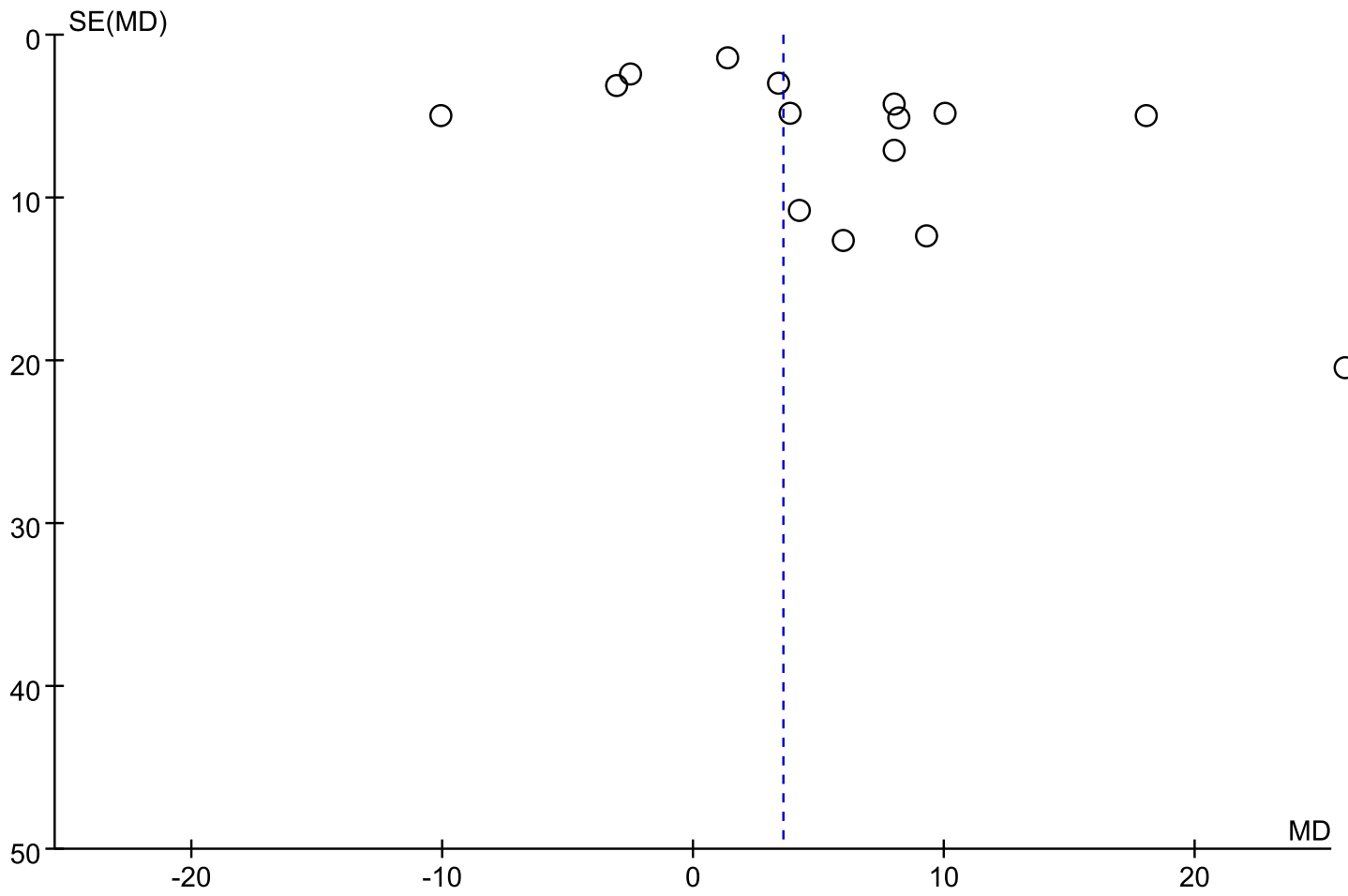


Index for supplementary figures

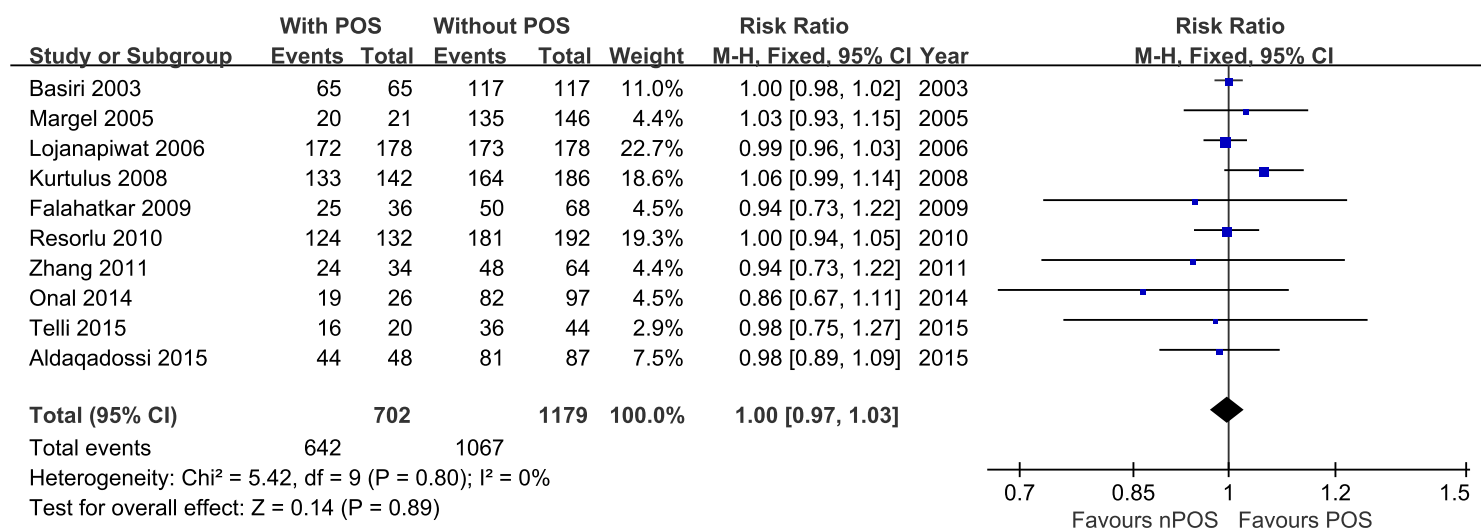
Comparison Items	Page Number of Forest plot	Page Number of Funnel plot
Operative time	1	2
Single tract	3	4
Requiring multiple tracts	5	6
Needing metal dilator	7	8
Tract establishing time	9	10
Fluoroscopic time	11	12
Analgesics demand	13	14
Hemoglobin drop	15	16
Hemorrhage	17	18
Fever	19	20
Hemo-/Hydro-/Pneumothorax	21	22
Blood transfusion	23	24
Urinary tract infection	25	26
Sepsis	27	28
Angiographic embolization	29	30
Total complications	31	32
Hospital stay(d)	33	34
Secondary procedure	35	36
Initial stone-free rate	37	38
Final stone-free rate	39	40
Supracostal access	41	42



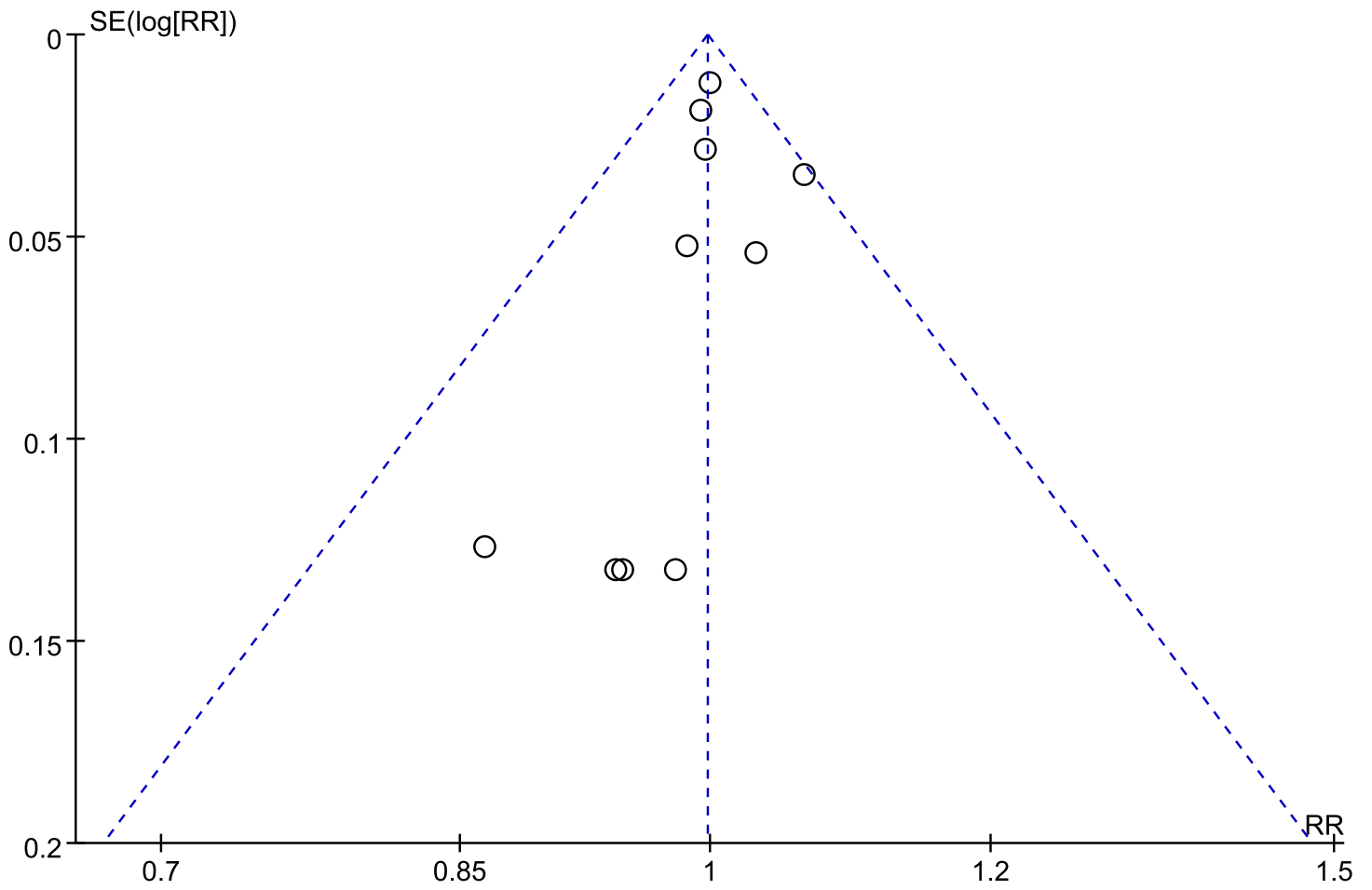
Supplementary Figure 1. Forest plot of the comparison for operative time. CI, confidence interval; IV, inverse variance; (n) POS, (non-) previous open surgery; SD, standard deviation.



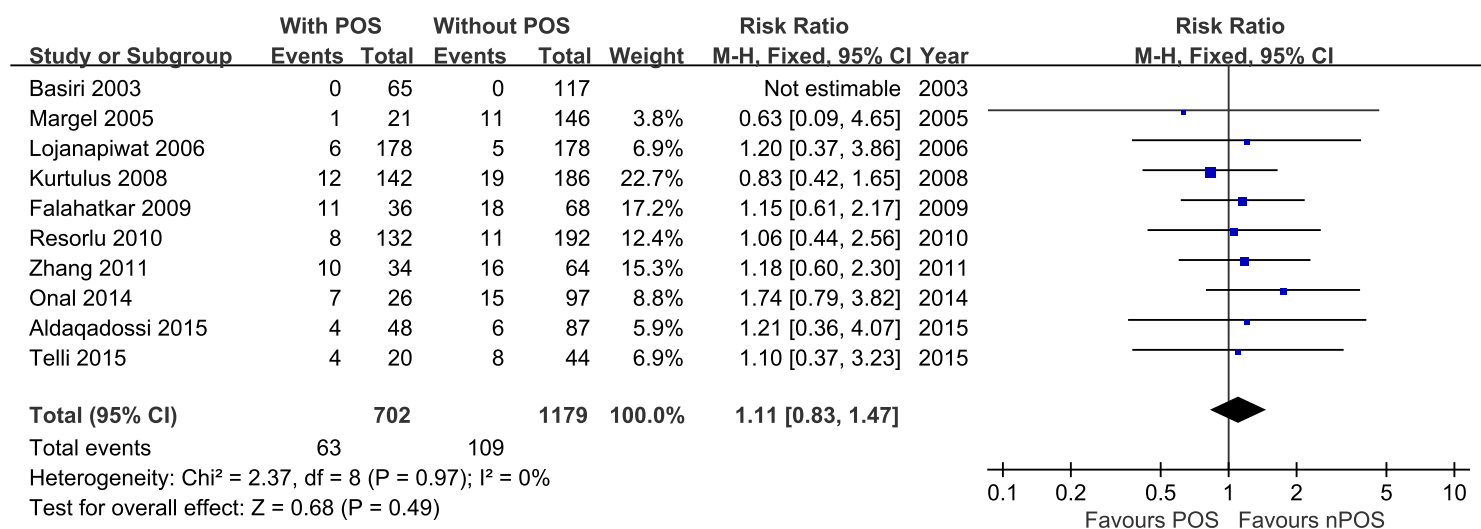
Supplementary Figure 2. Funnel plot of the comparison for operative time.



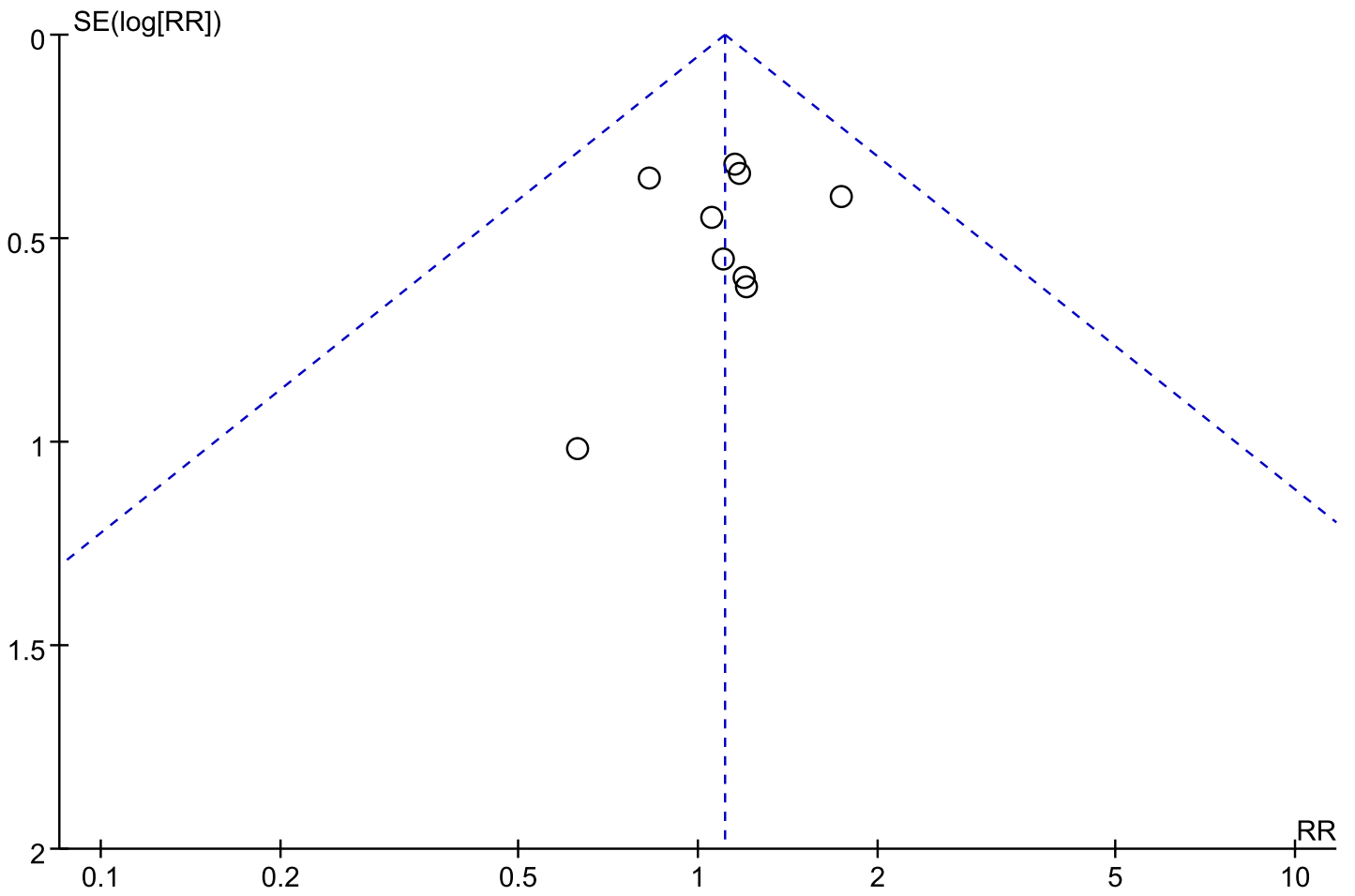
Supplementary Figure 3. Forest plot of the comparison for single tract. CI, confidence interval; M-H, Mantel-Haenszel; (n)POS, (non-) previous open surgery.



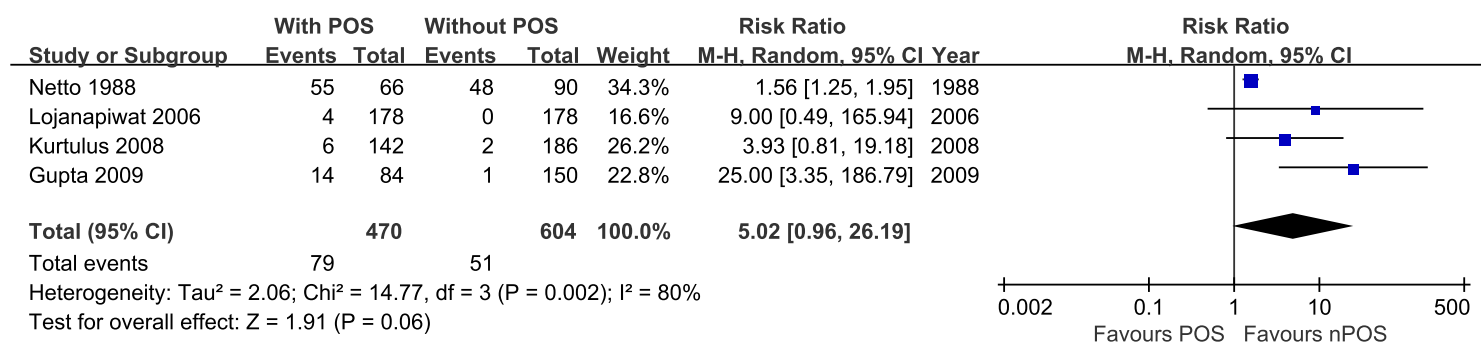
Supplementary Figure 4. Funnel plot of the comparison for single tract.



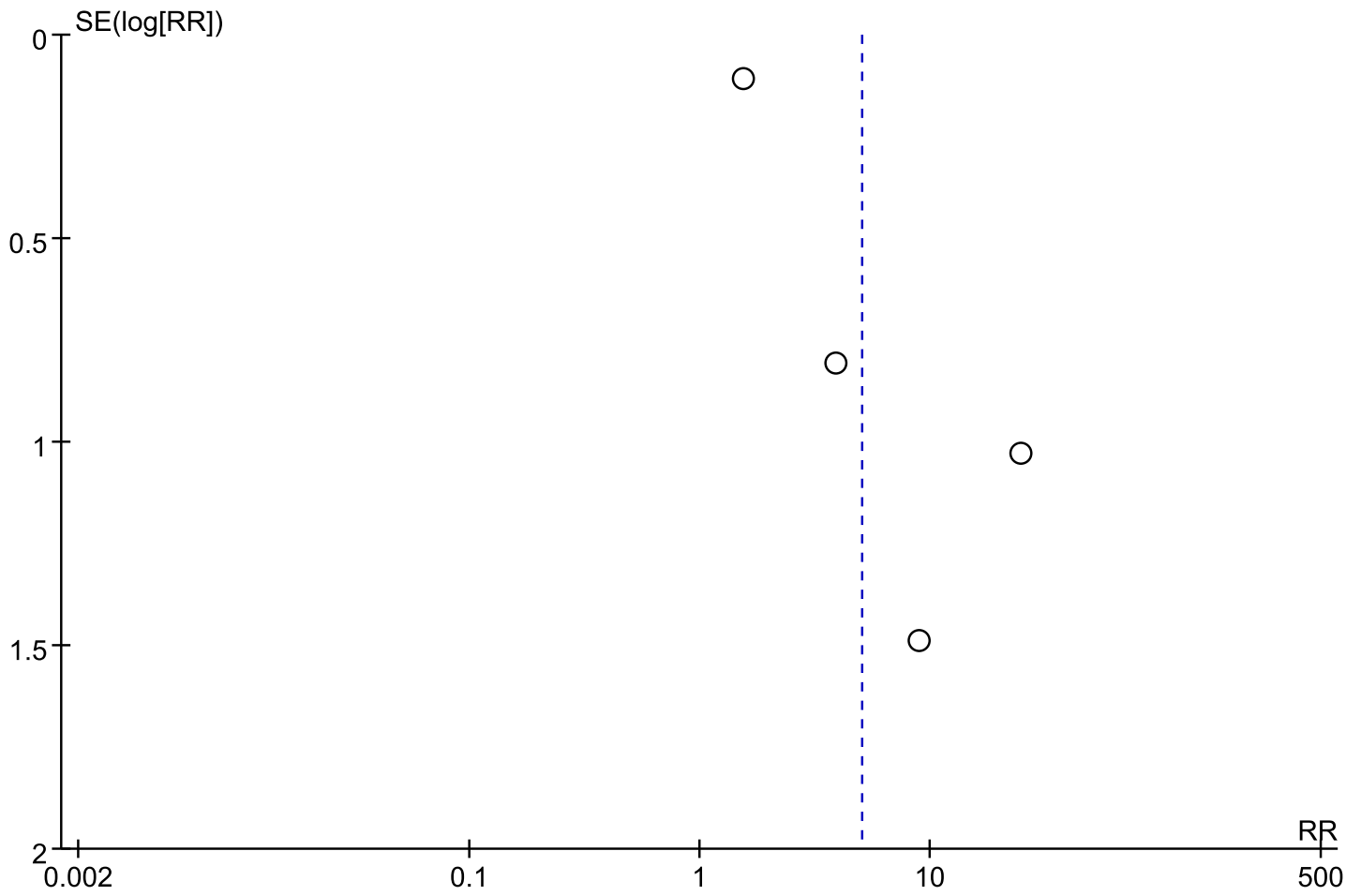
Supplementary Figure 5. Forest plot of the comparison for multiple tracts. CI, confidence interval; M-H, Mantel-Haenszel; (n)POS, (non-) previous open surgery.



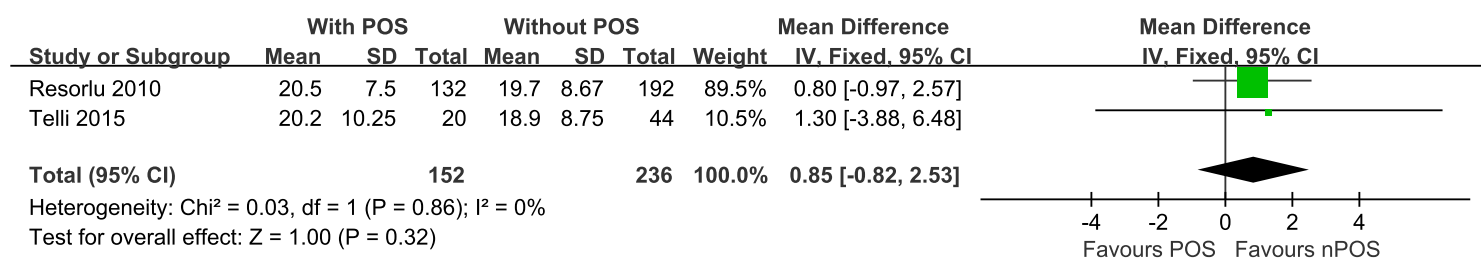
Supplementary Figure 6. Funnel plot of the comparison for multiple tracts.



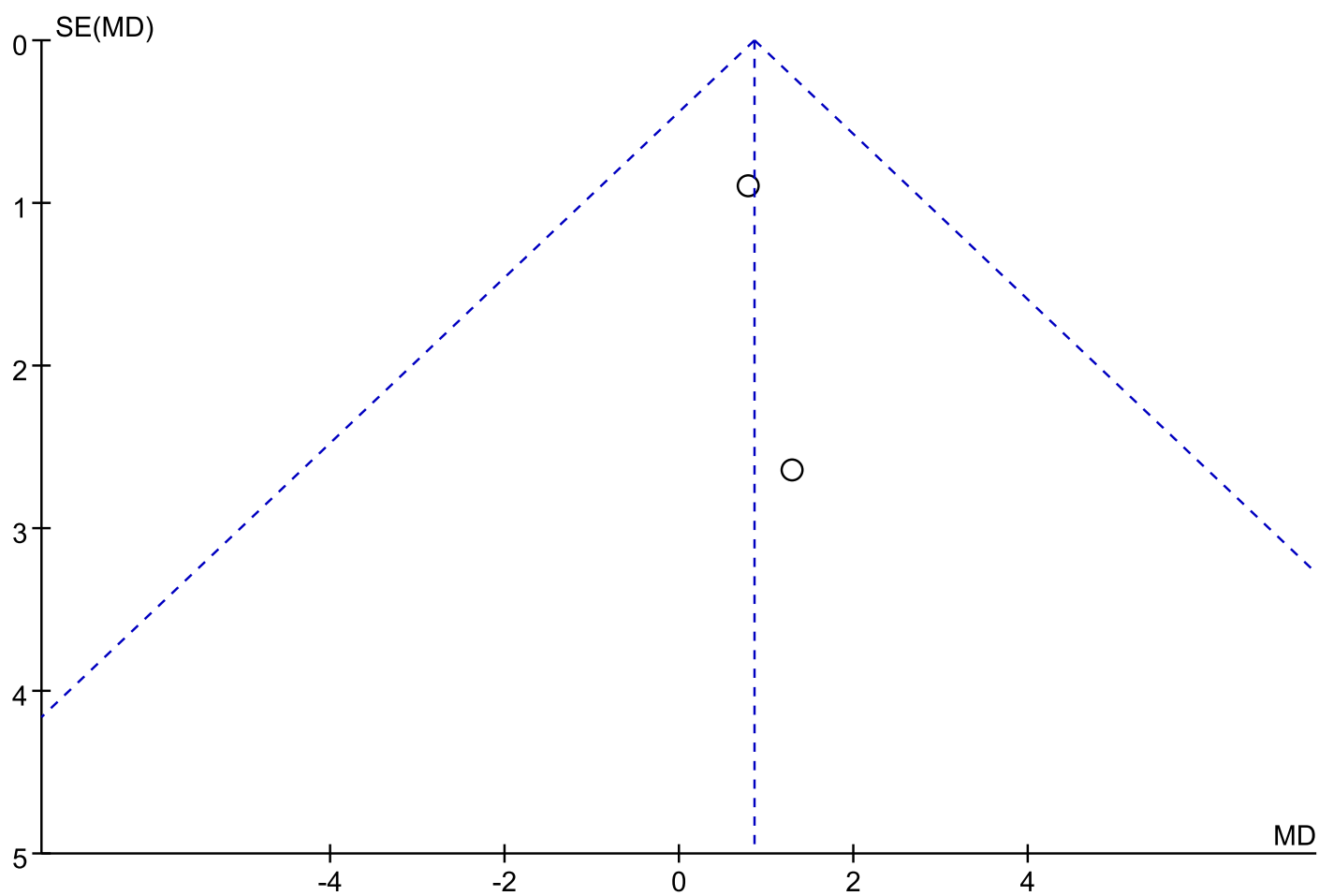
Supplementary Figure 7. Forest plot of the comparison for requiring metal dilator. CI, confidence interval; M-H, Mantel-Haenszel; (n)POS, (non-) previous open surgery.



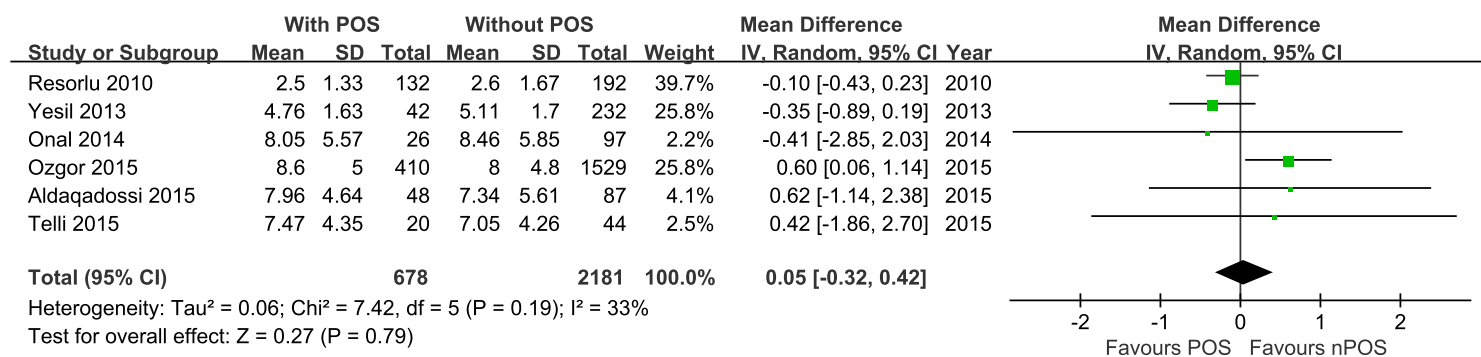
Supplementary Figure 8. Funnel plot of the comparison for requiring metal dilator.



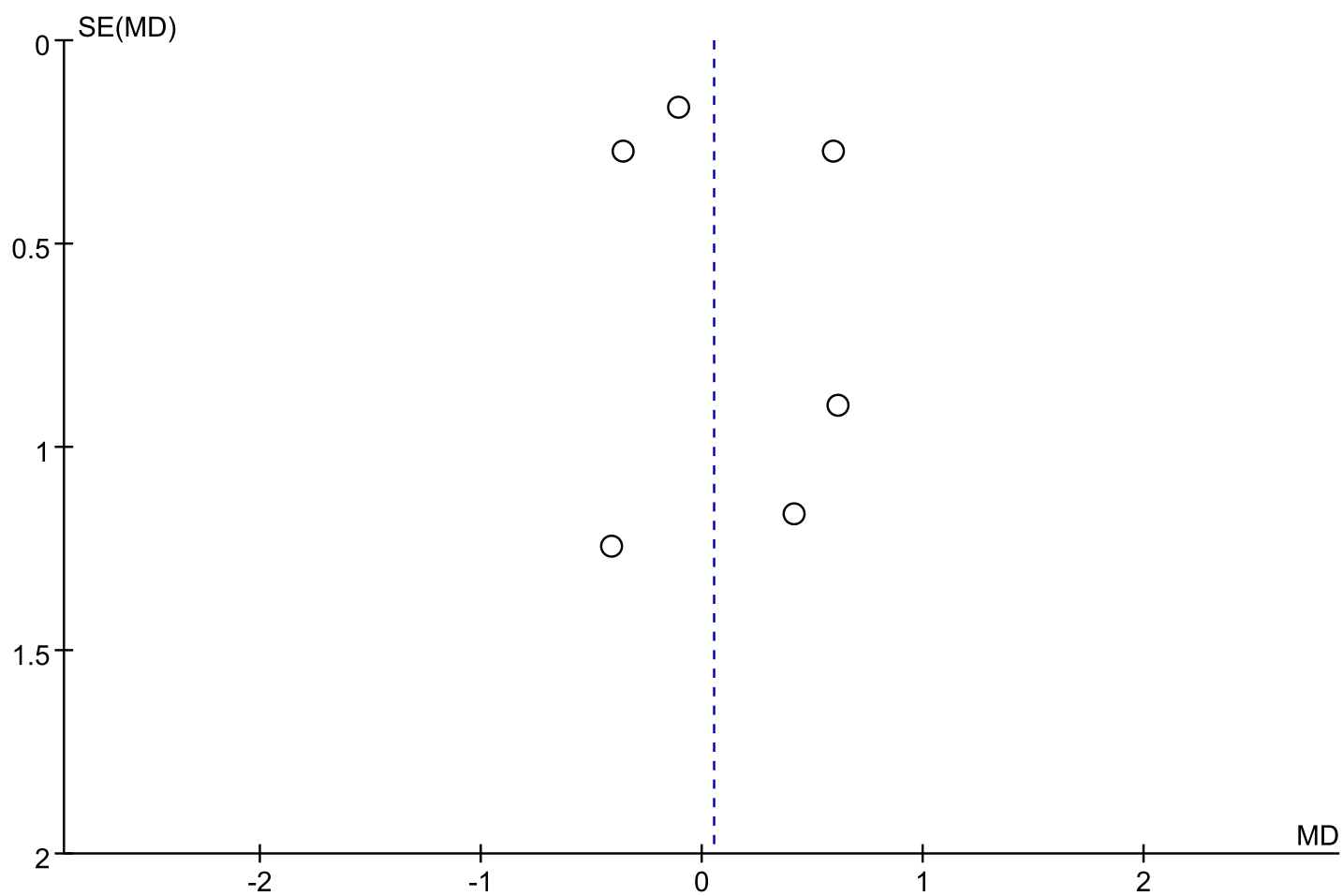
Supplementary Figure 9. Forest plot of the comparison for tract establishing time. CI, confidence interval; IV, inverse variance; (n)POS, (non-) previous open surgery; SD, standard deviation.



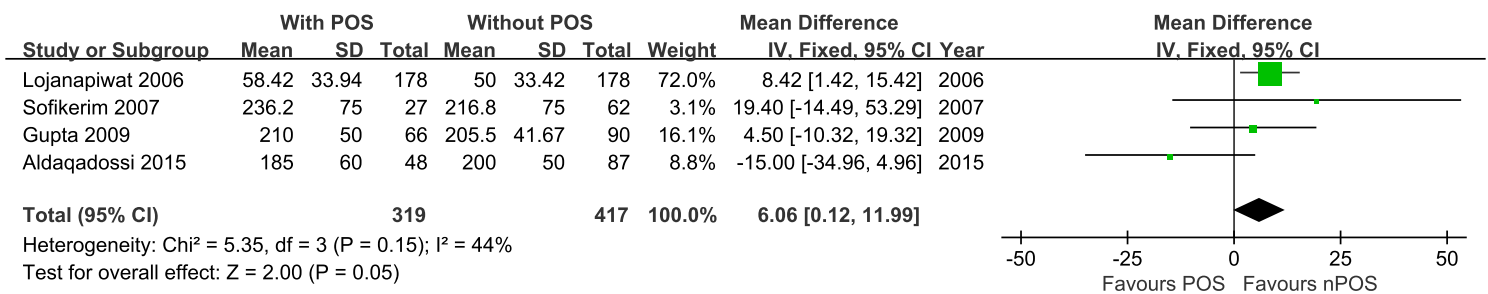
Supplementary Figure 10. Funnel plot of the comparison for tract establishing time.



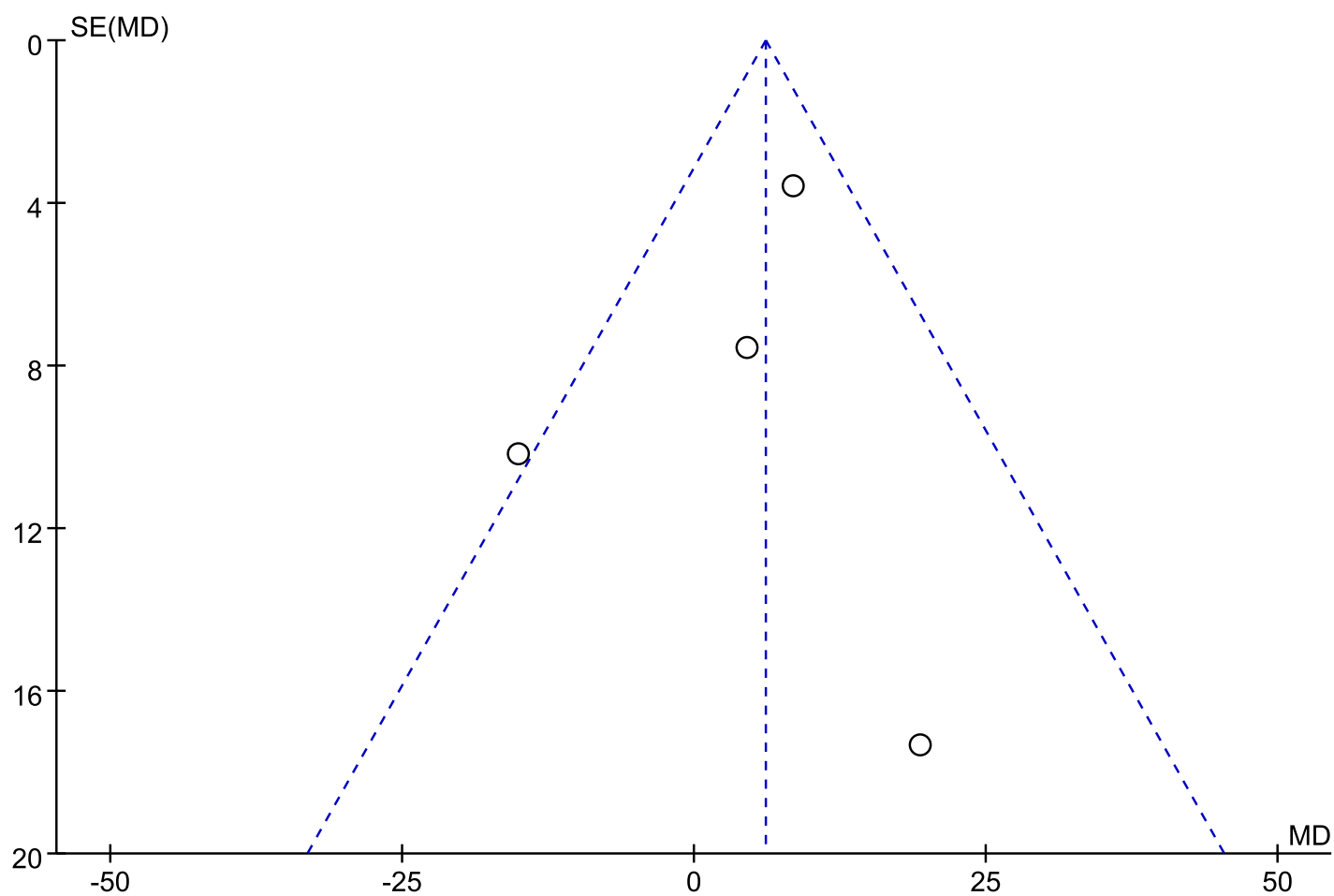
Supplementary Figure 11. Forest plot of the comparison for fluoroscopic time. CI, confidence interval; IV, inverse variance; (n) POS, (non-) previous open surgery; SD, standard deviation.



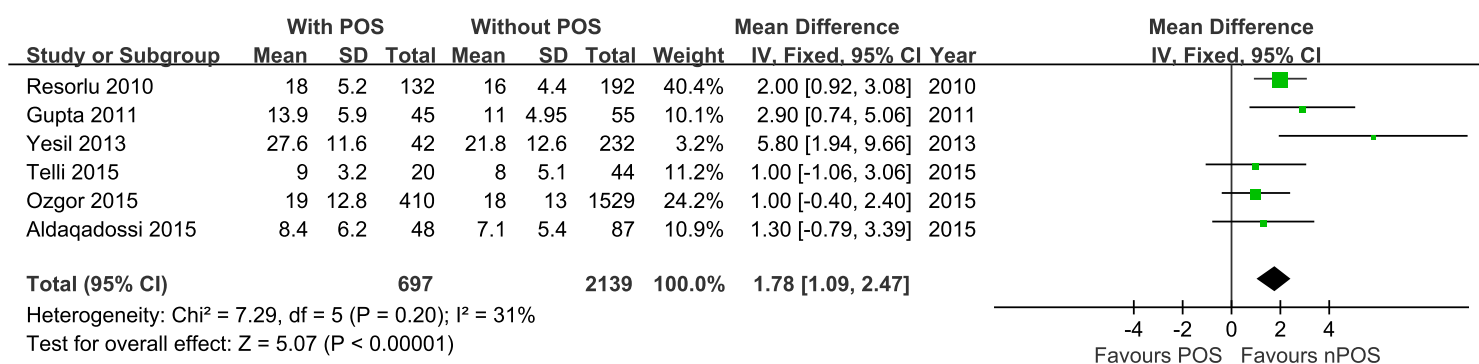
Supplementary Figure 12. Funnel plot of the comparison for fluoroscopic time.



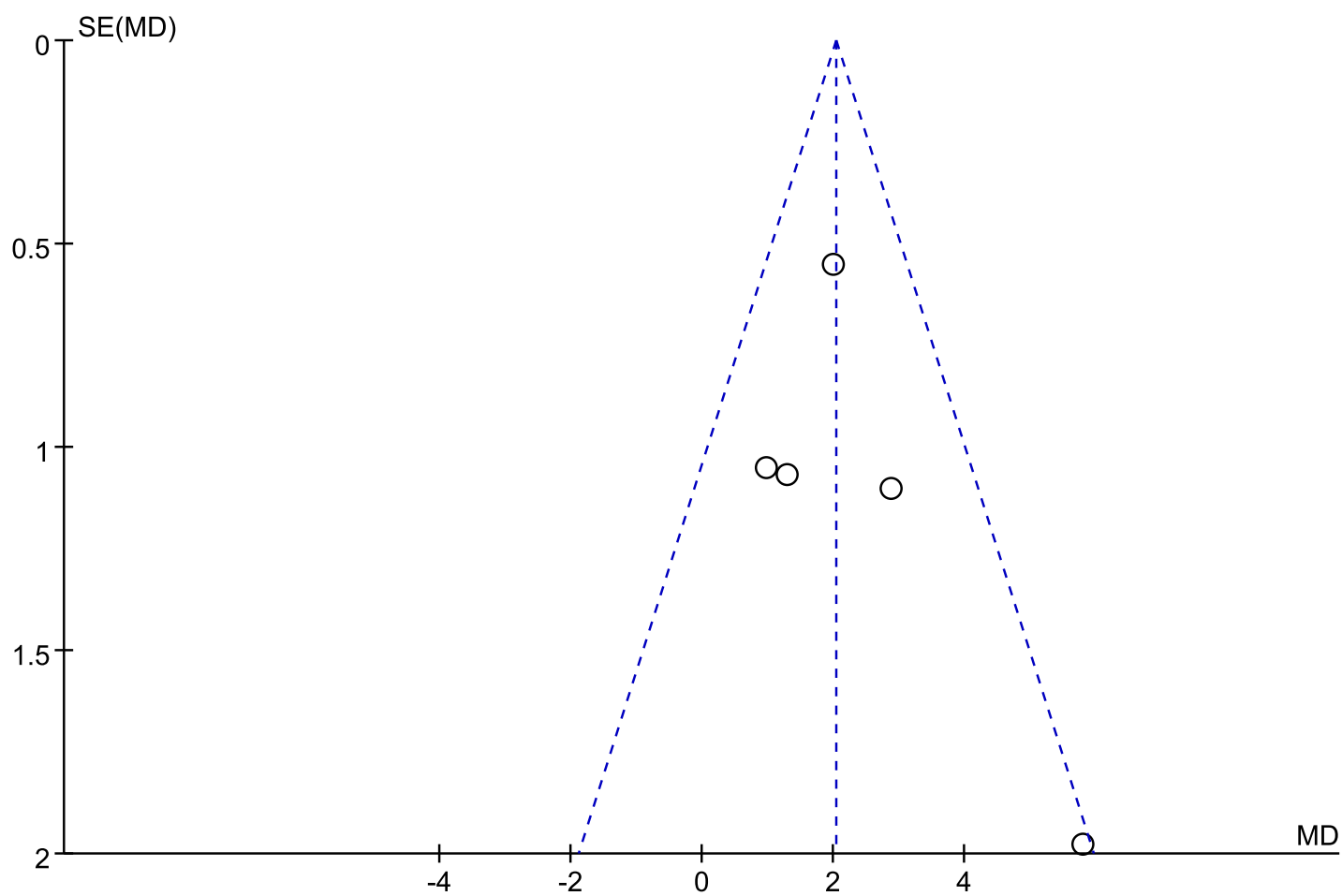
Supplementary Figure 13. Forest plot of the comparison for analgesic demand. CI, confidence interval; IV, inverse variance; (n)POS, (non-) previous open surgery; SD, standard deviation.



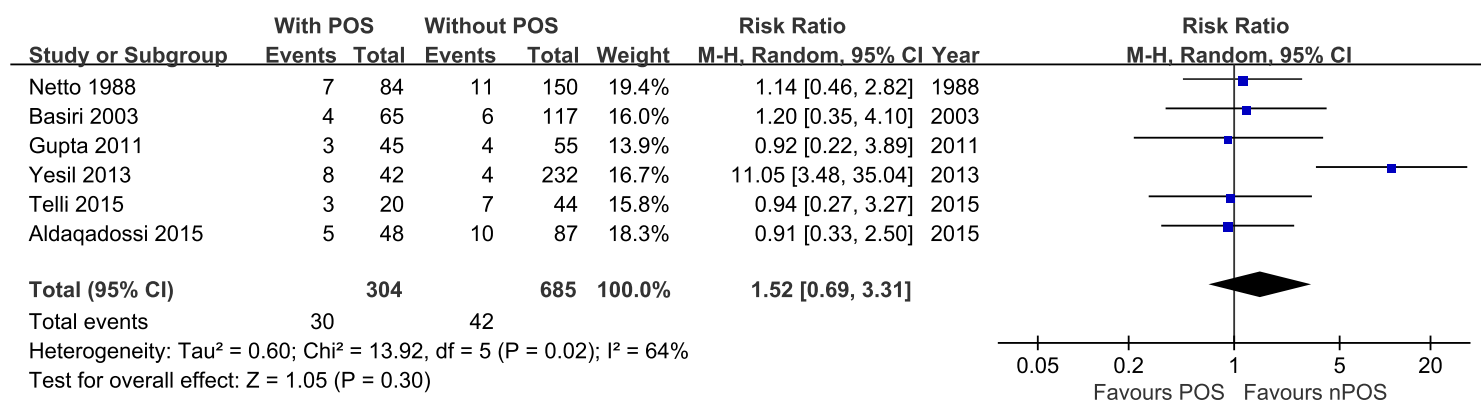
Supplementary Figure 14. Funnel plot of the comparison for analgesics demand.



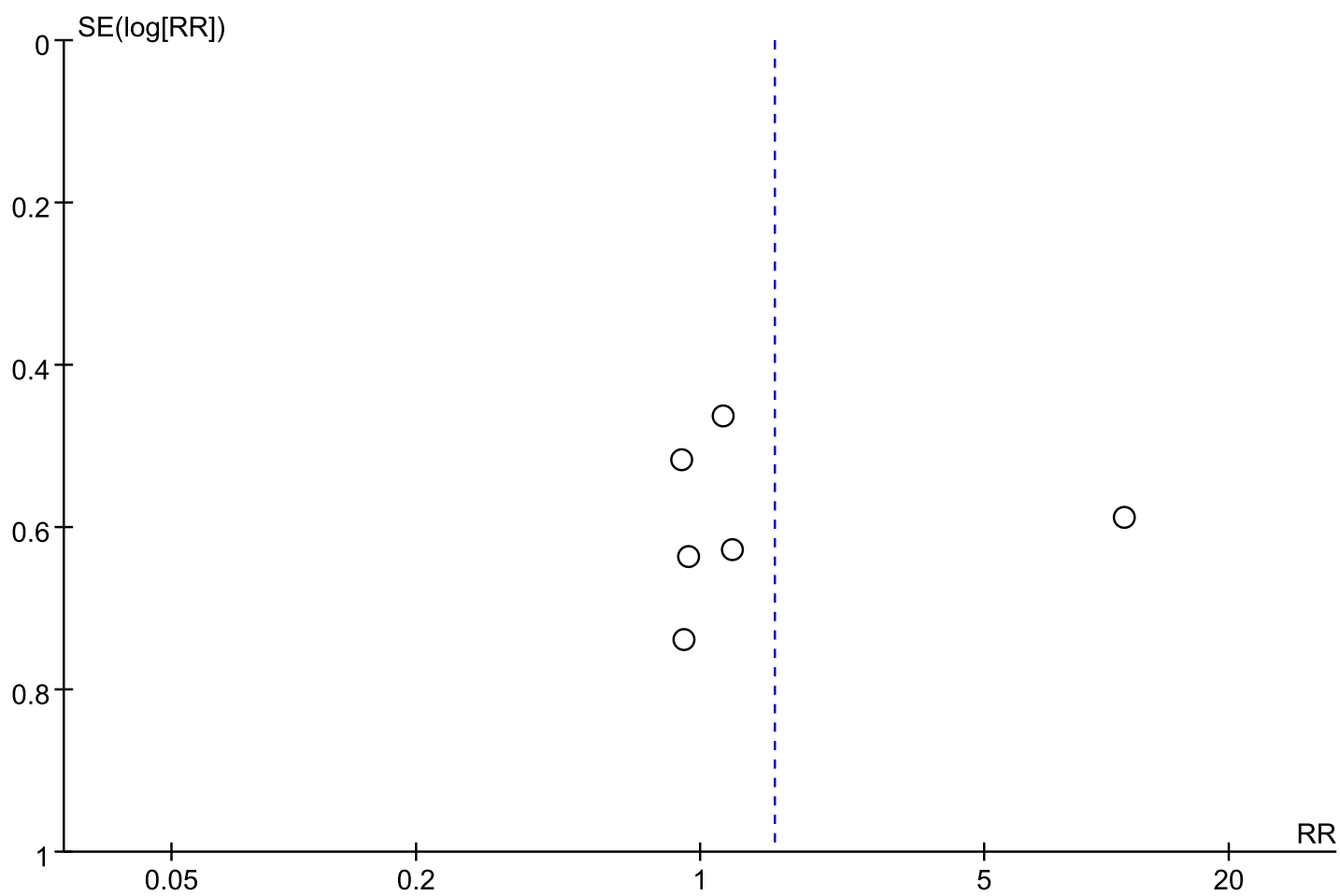
Supplementary Figure 15. Forest plot of the comparison for hemoglobin drop. CI, confidence interval; IV, inverse variance; (n)POS, (non-) previous open surgery; SD, standard deviation.



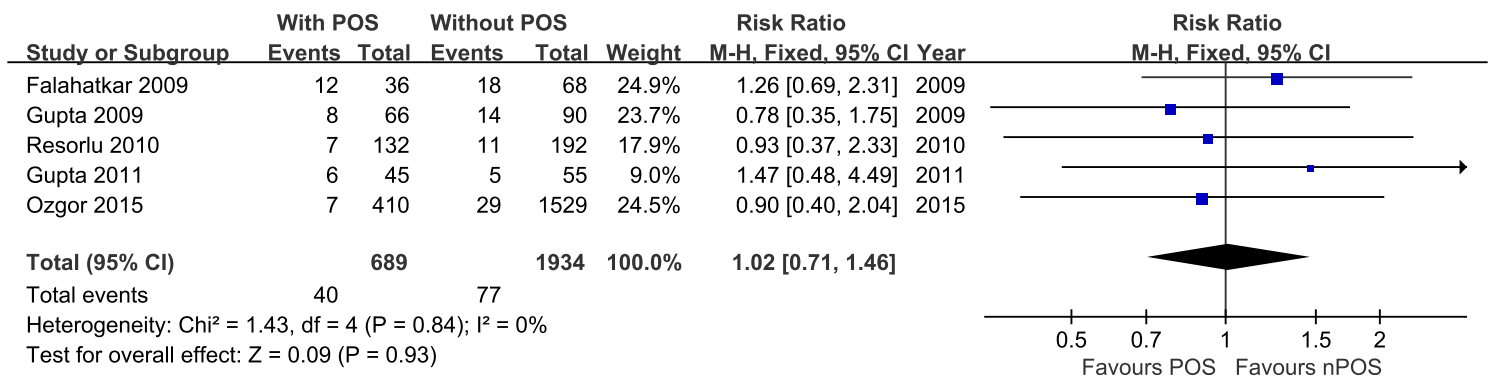
Supplementary Figure 16. Funnel plot of the comparison for hemoglobin drop.



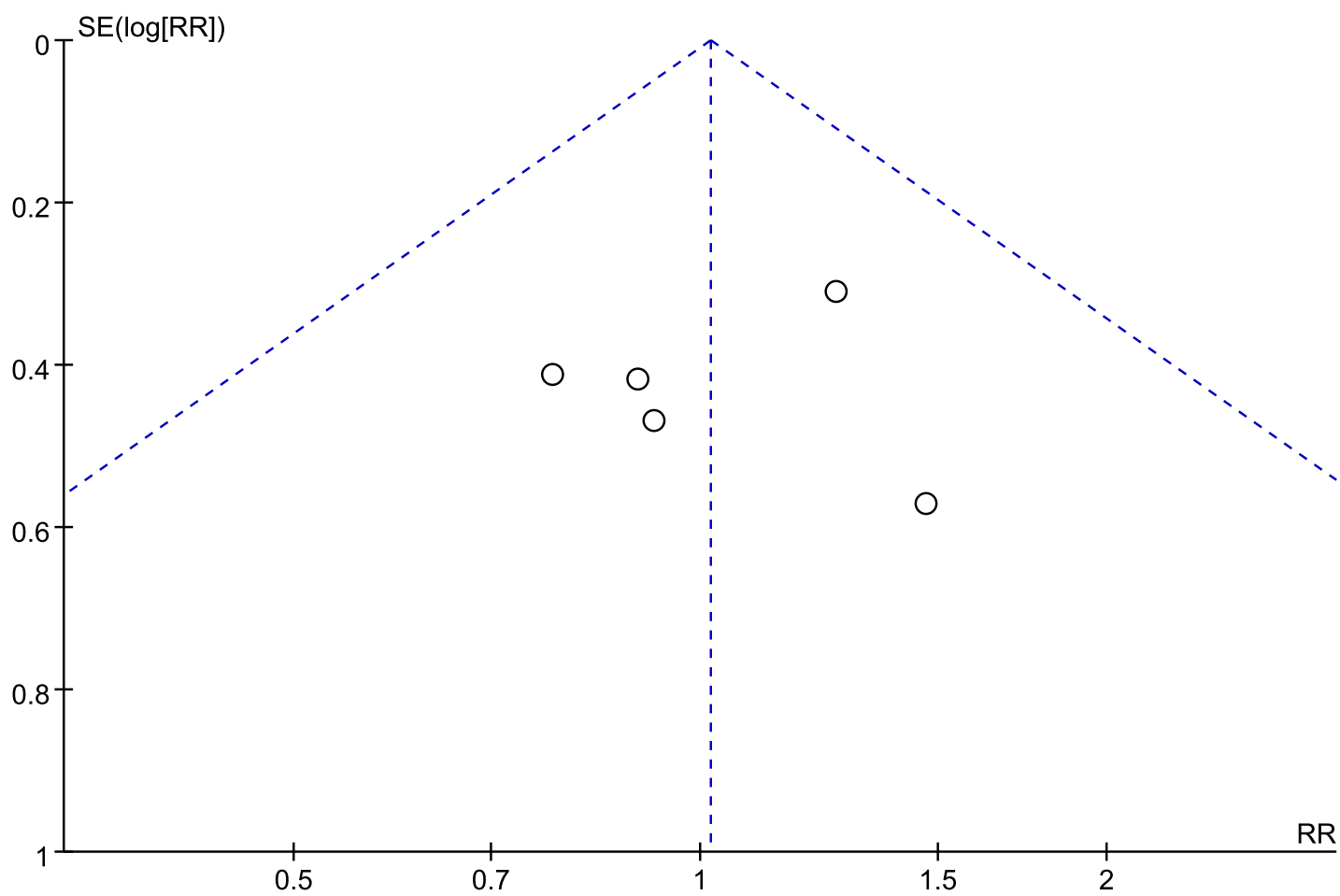
Supplementary Figure 17. Forest plot of the comparison for hemorrhage. CI, confidence interval; M-H, Mantel-Haenszel; (n)POS, (non-) previous open surgery.



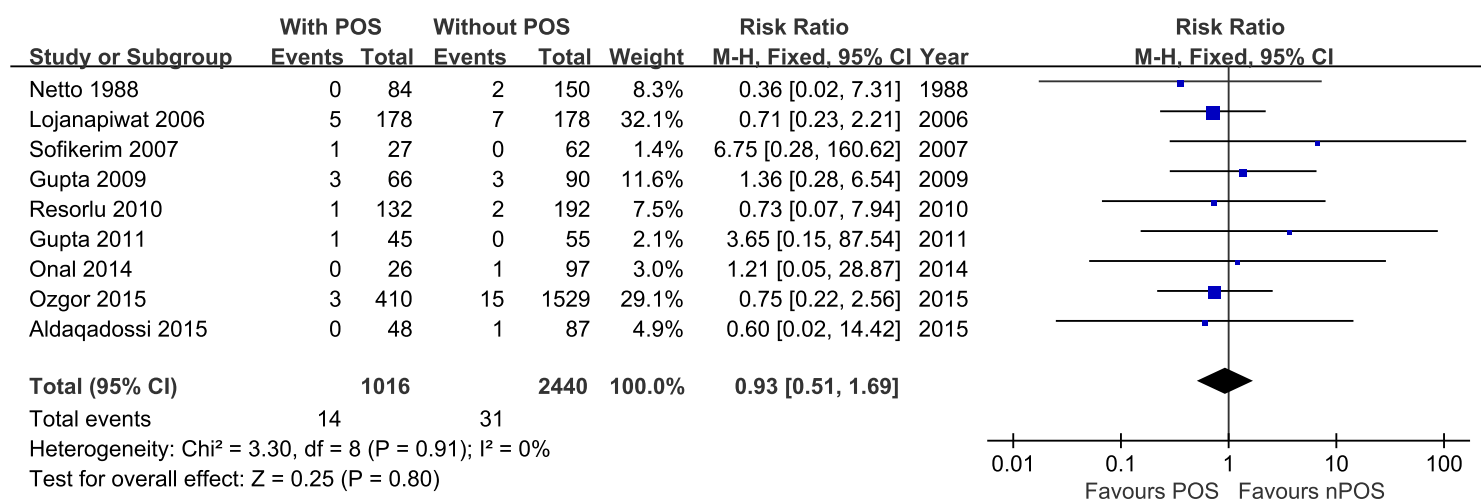
Supplementary Figure 18. Funnel plot of the comparison for Hemorrhage.



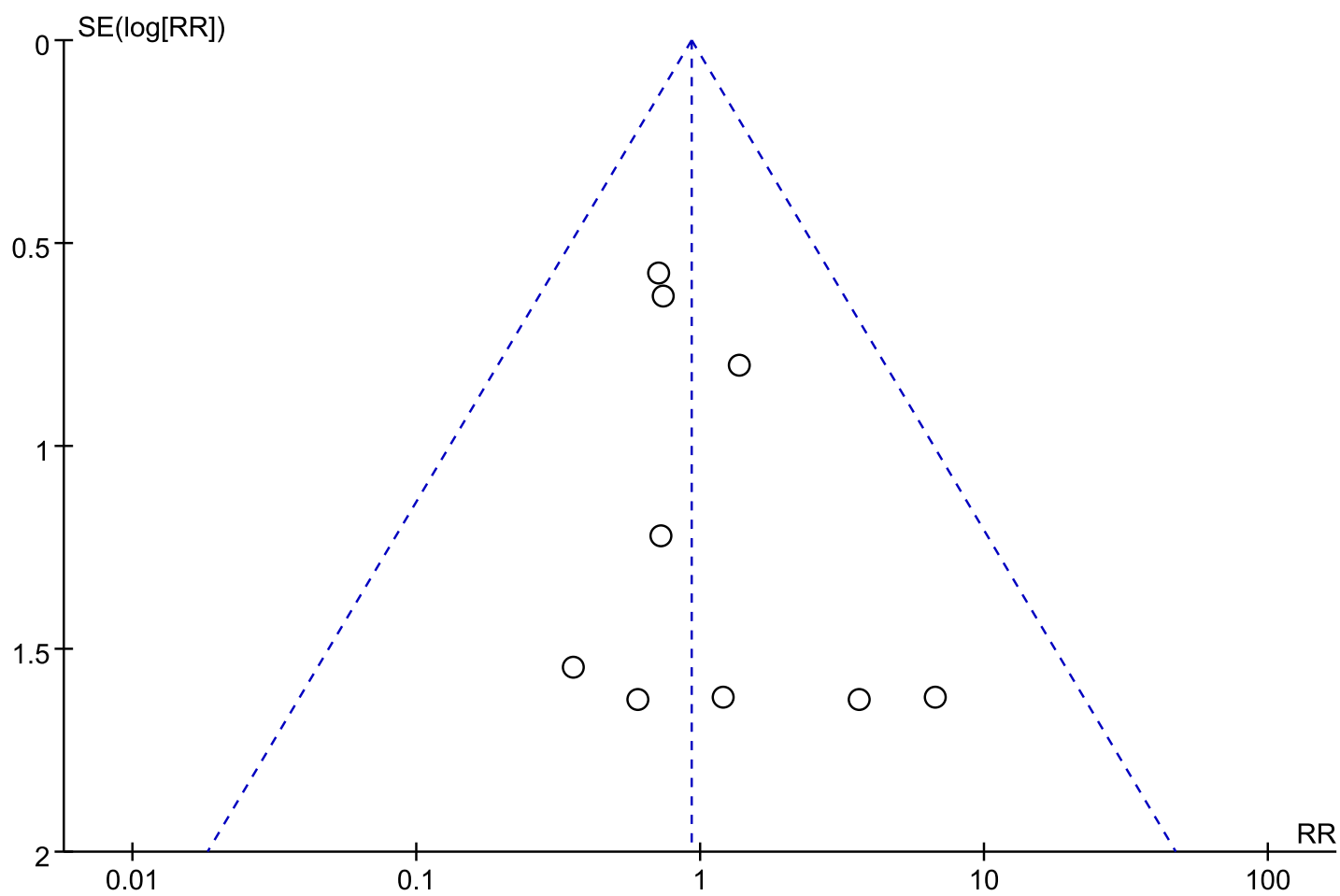
Supplementary Figure 19. Forest plot of the comparison for postoperative fever. CI, confidence interval; M-H, Mantel-Haenszel; (n)POS, (non-) previous open surgery.



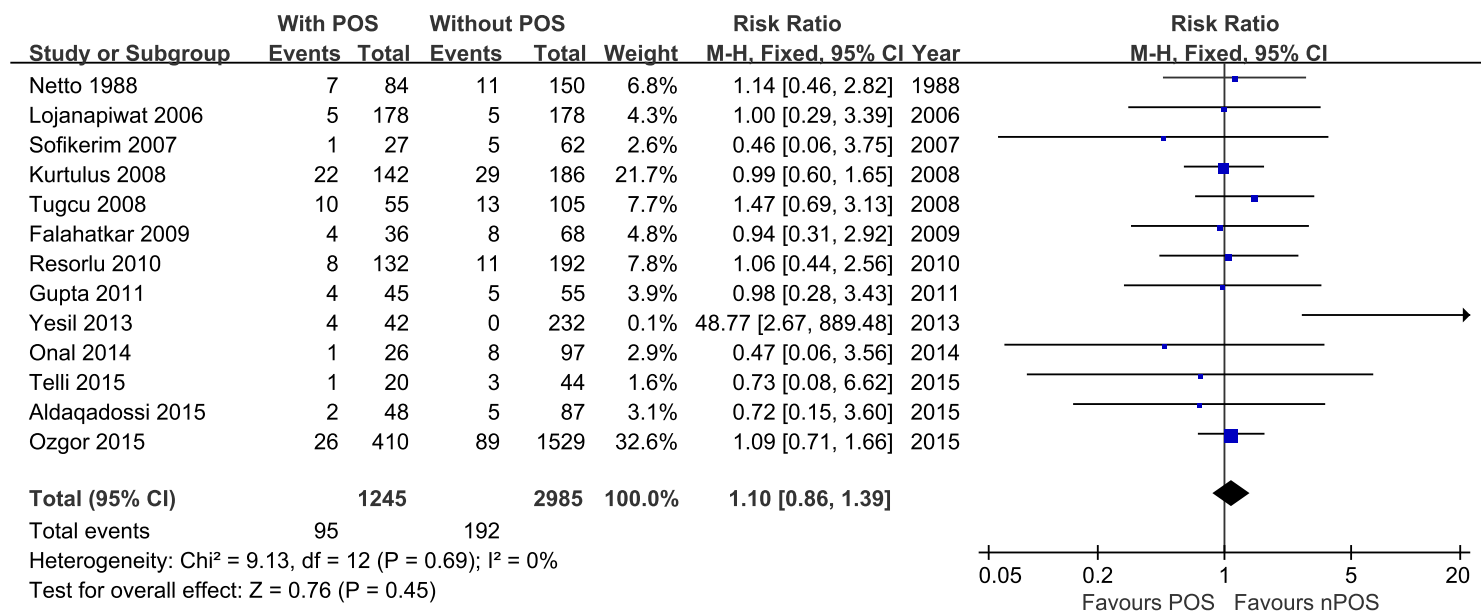
Supplementary Figure 20. Funnel plot of the comparison for postoperative fever.



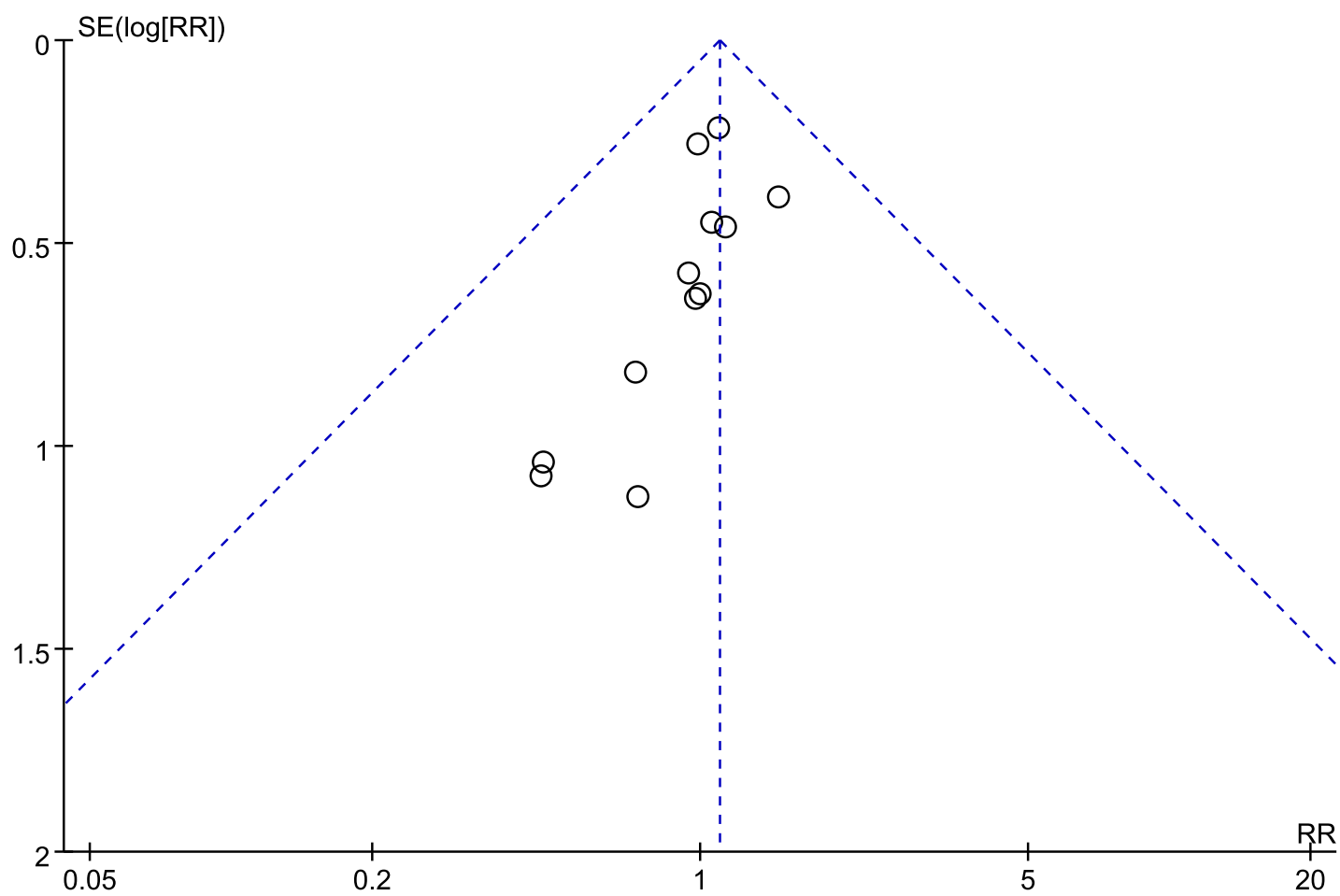
Supplementary Figure 21. Forest plot of the comparison for hydro-/hemo-/pneumothorax. CI, confidence interval; M-H, Mantel-Haenszel; (n)POS, (non-) previous open surgery.



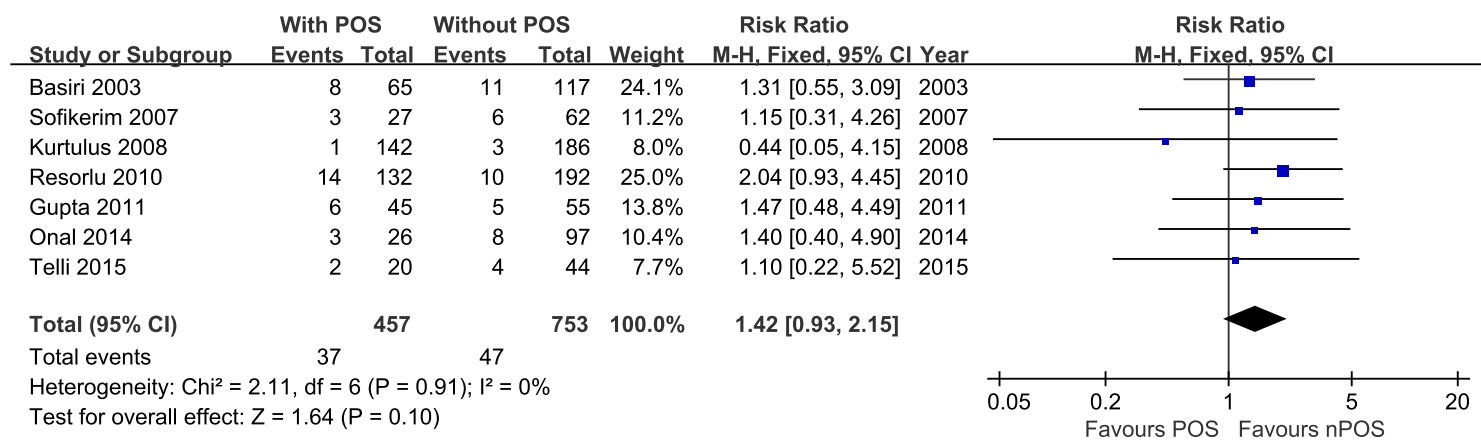
Supplementary Figure 22. Funnel plot of the comparison for hydro-/hemo-/pneumothorax.



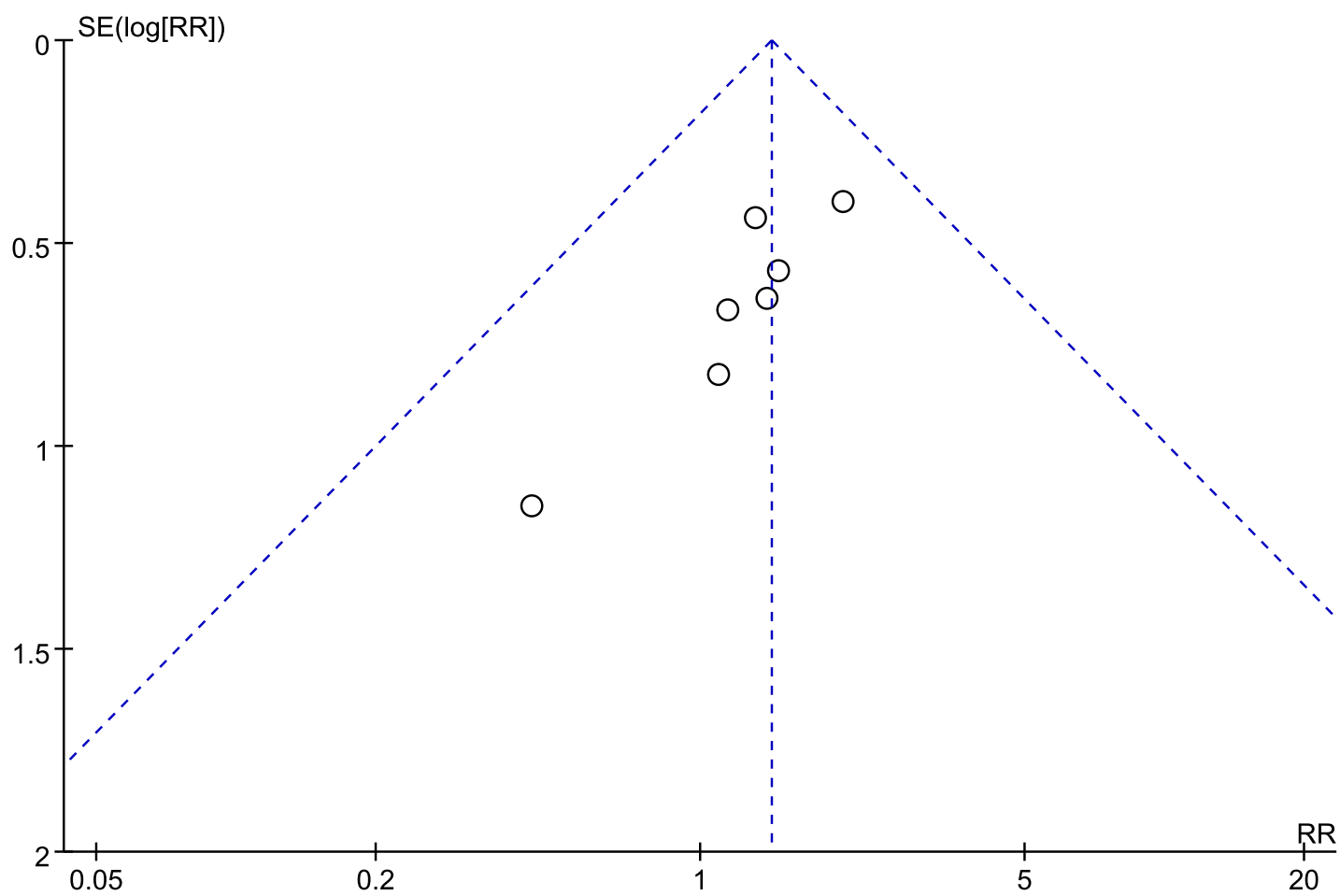
Supplementary Figure 23. Forest plot of the comparison for blood transfusion. CI, confidence interval; M-H, Mantel-Haenszel; (n)POS, (non-) previous open surgery.



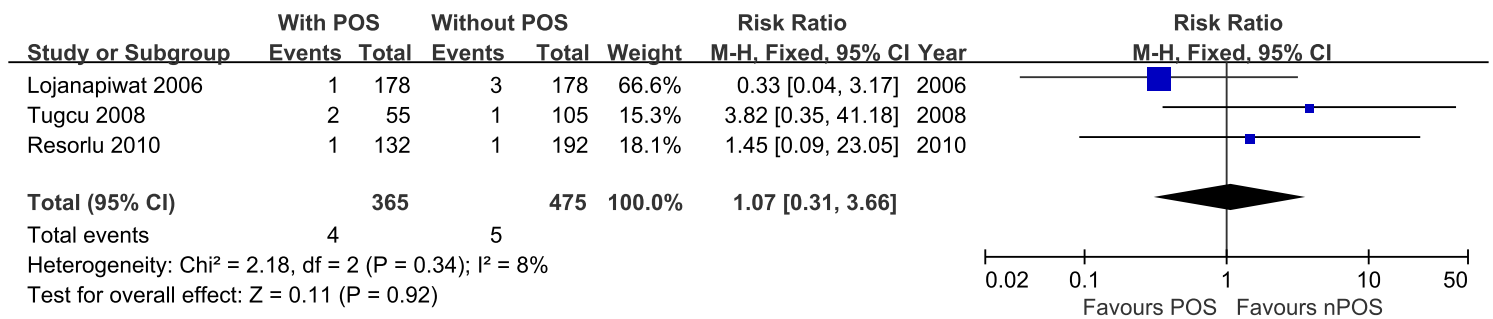
Supplementary Figure 24. Funnel plot of the comparison for blood transfusion.



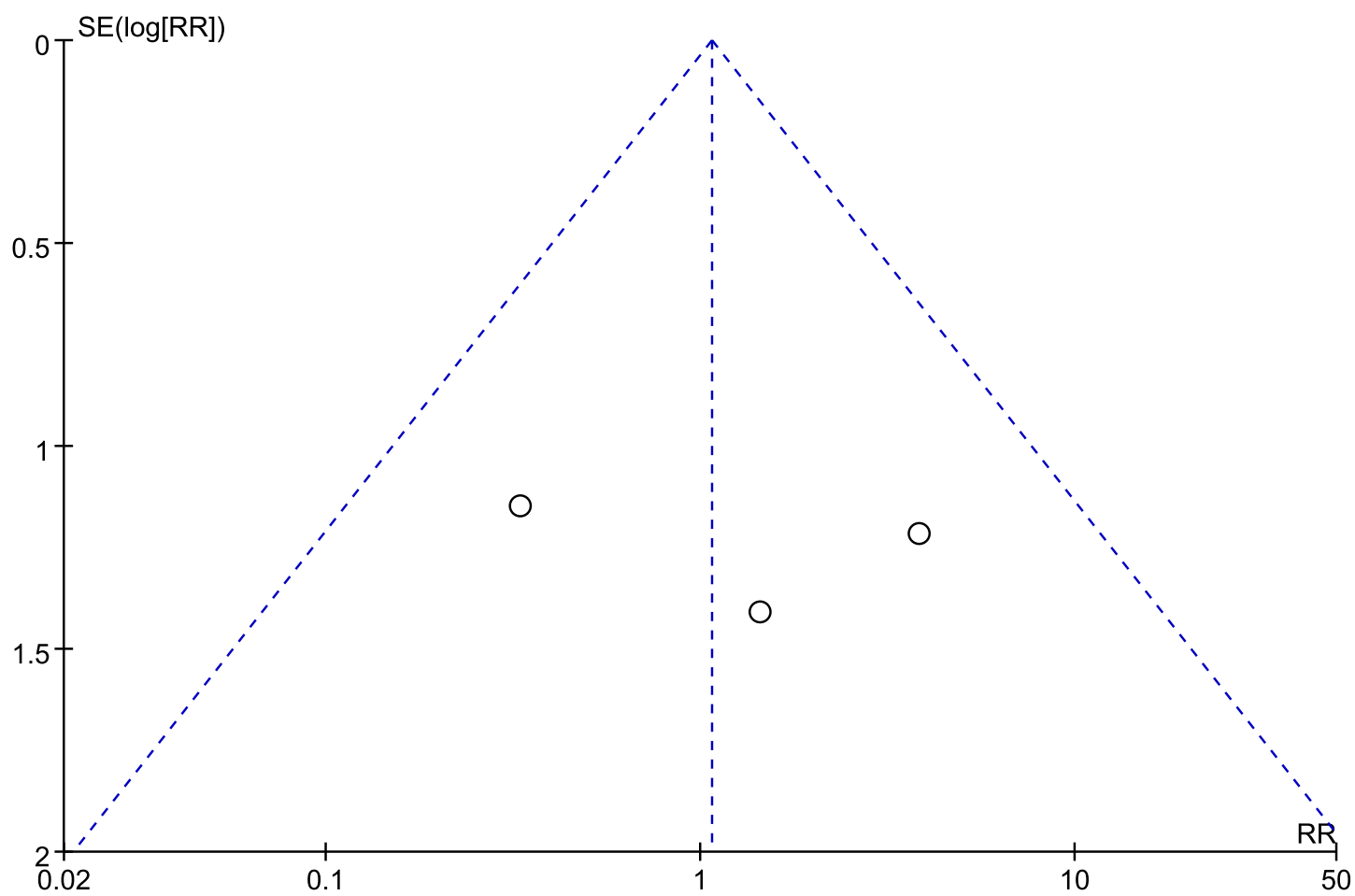
Supplementary Figure 25. Forest plot of the comparison for urinary tract infection. CI, confidence interval; M-H, Mantel-Haenszel; (n)POS, (non-) previous open surgery.



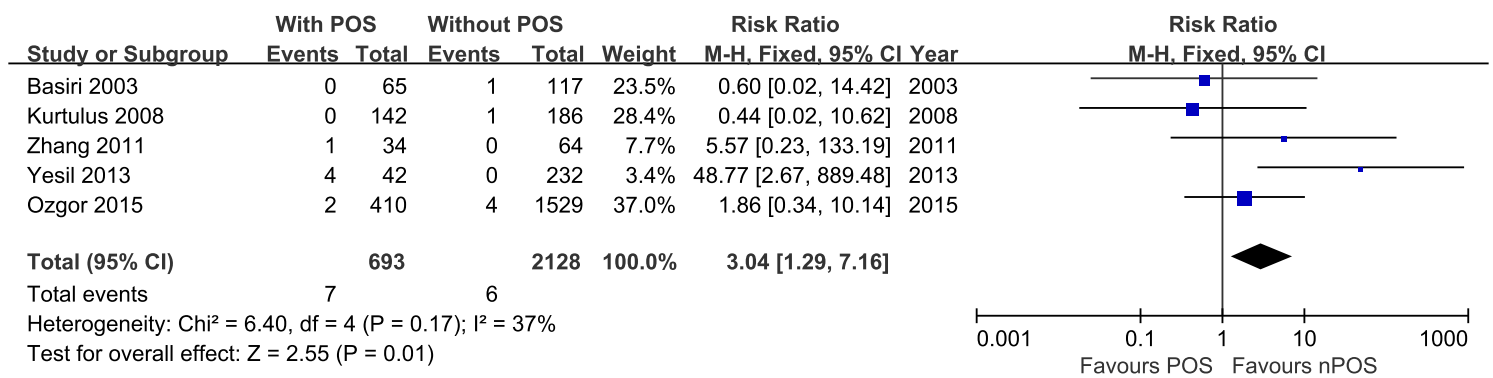
Supplementary Figure 26. Funnel plot of the comparison for urinary tract infection.



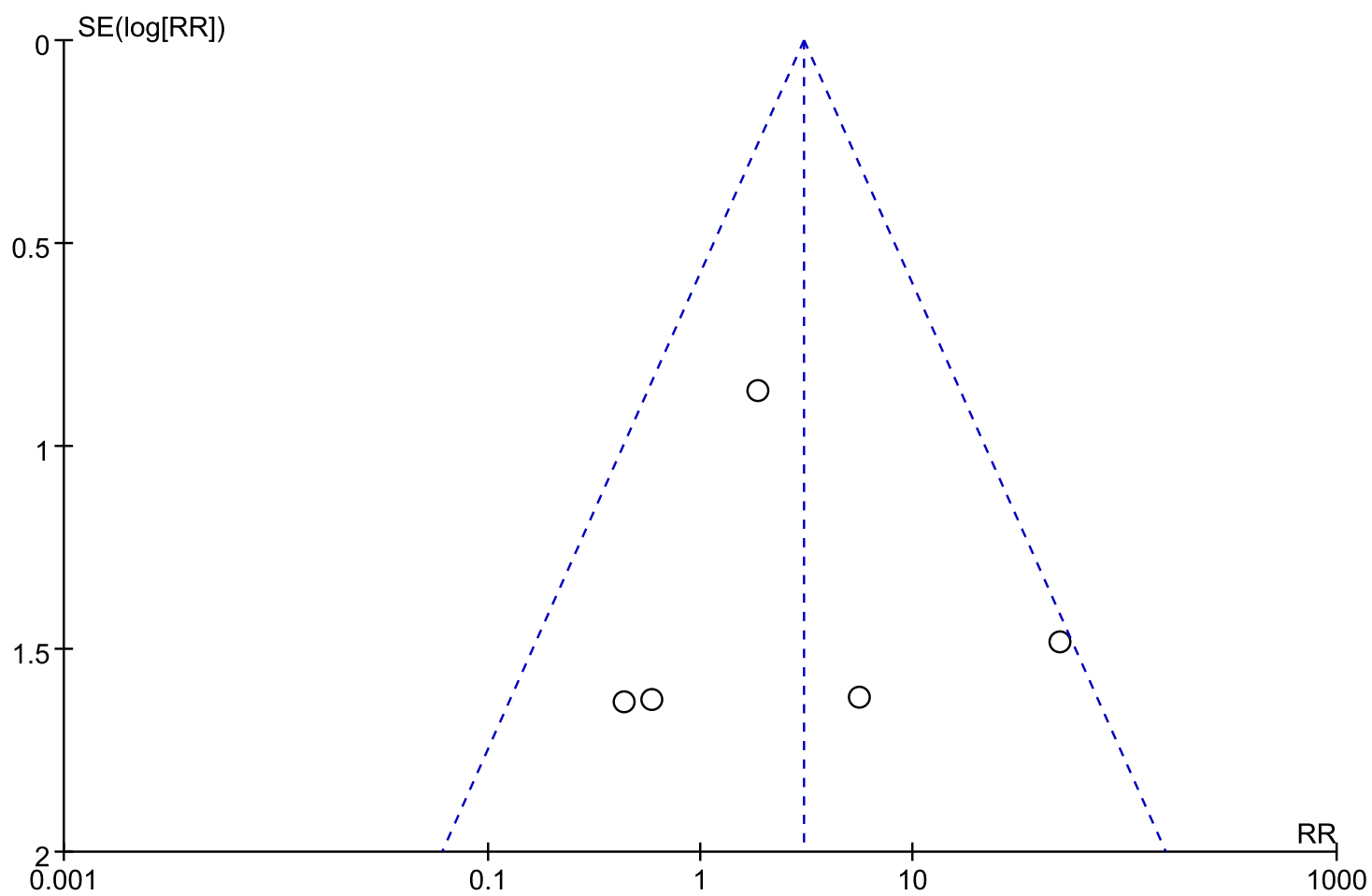
Supplementary Figure 27. Forest plot of the comparison for sepsis. CI, confidence interval; M-H, Mantel-Haenszel; (n)POS, (non-) previous open surgery.



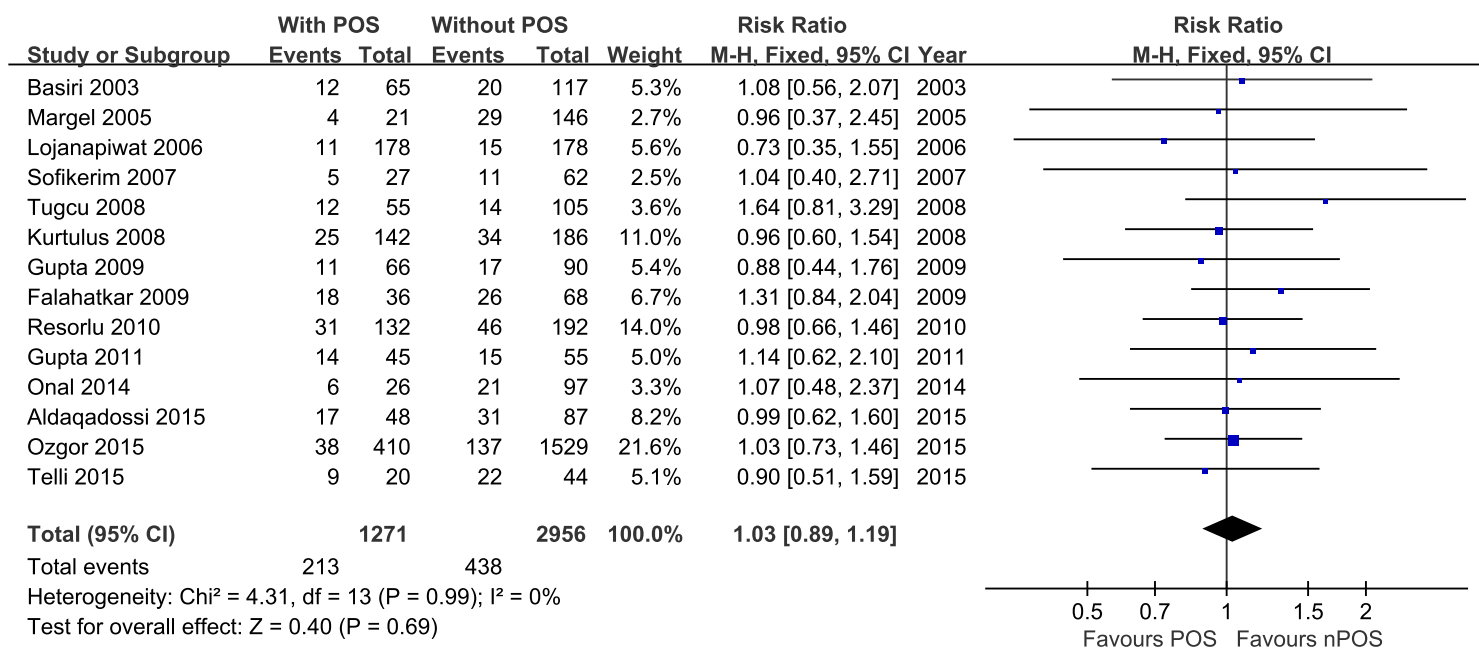
Supplementary Figure 28. Funnel plot of the comparison for sepsis.



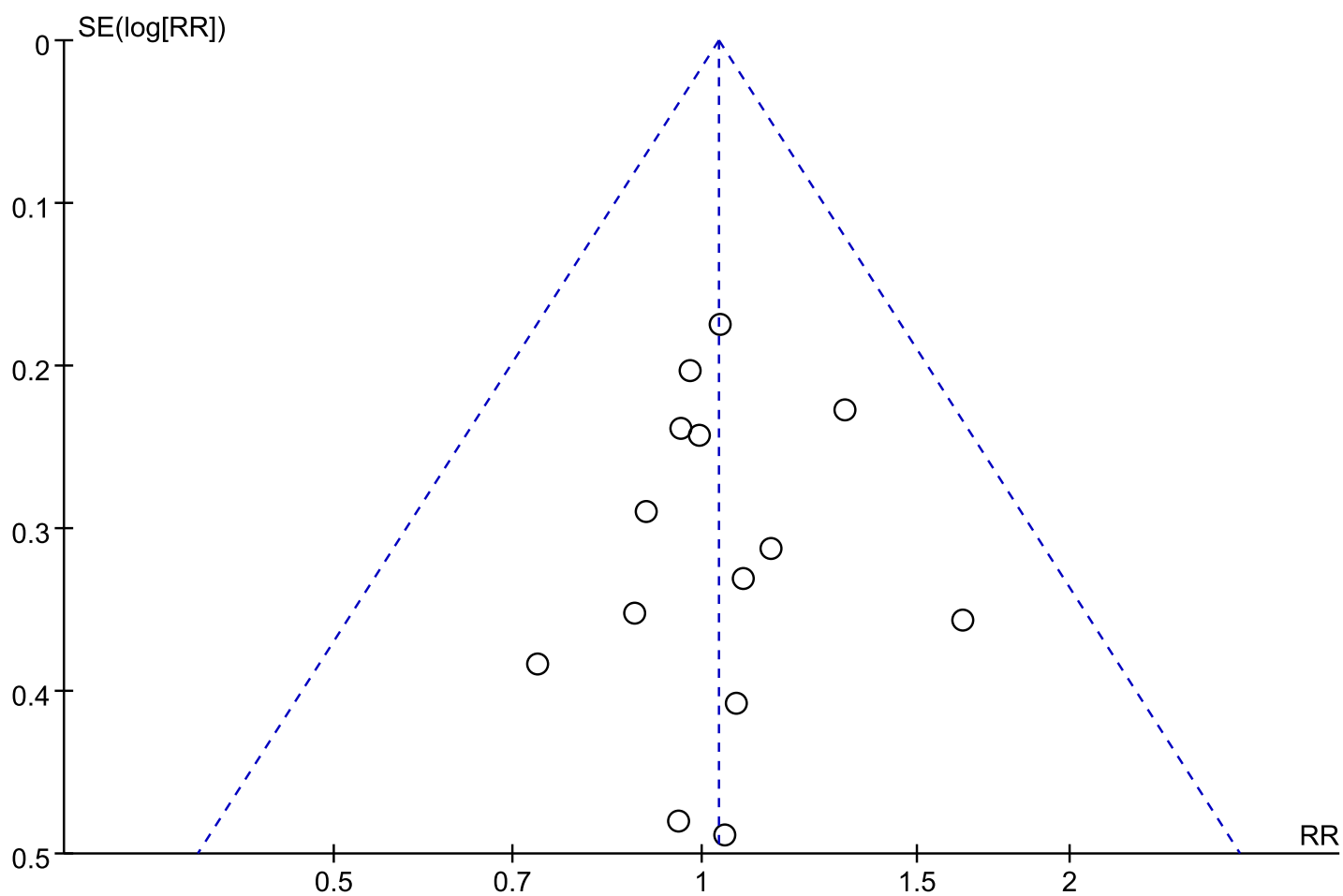
Supplementary Figure 29. Forest plot of the comparison for hemorrhage requiring angiographic embolization. CI, confidence interval; M-H, Mantel-Haenszel; (n)POS, (non-) previous open surgery.



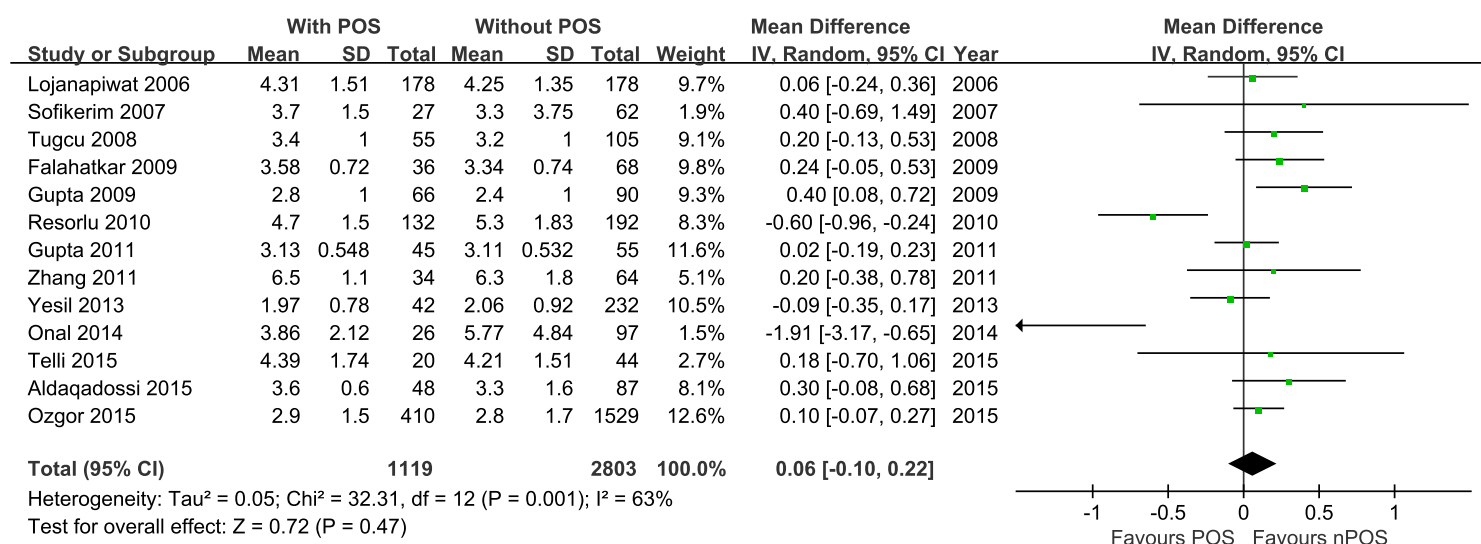
Supplementary Figure 30. Funnel plot of the comparison for hemorrhage requiring angiographic embolization.



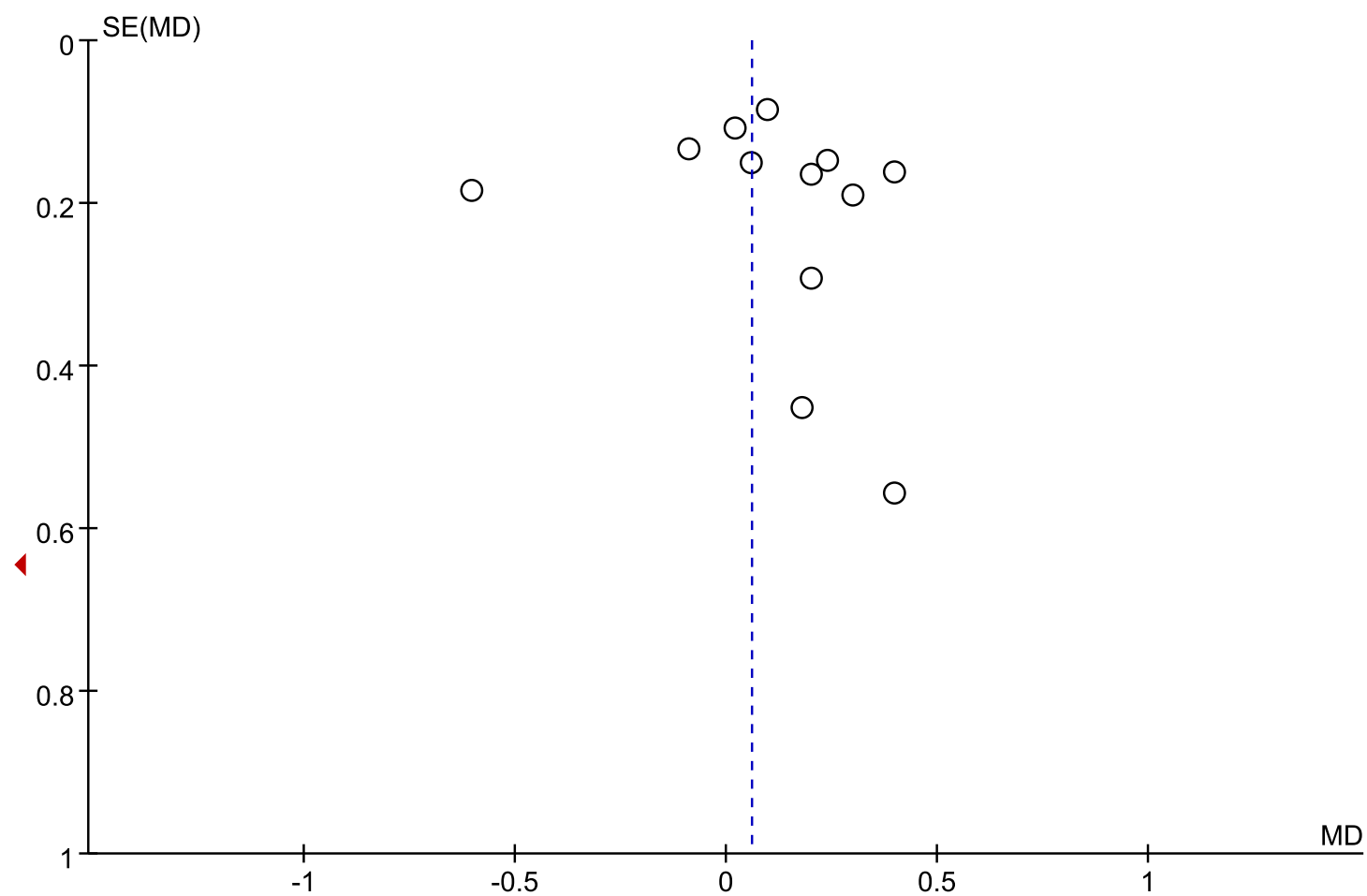
Supplementary Figure 31. Forest plot of the comparison for total complications. CI, confidence interval; M-H, Mantel-Haenszel; (n)POS, (non-) previous open surgery.



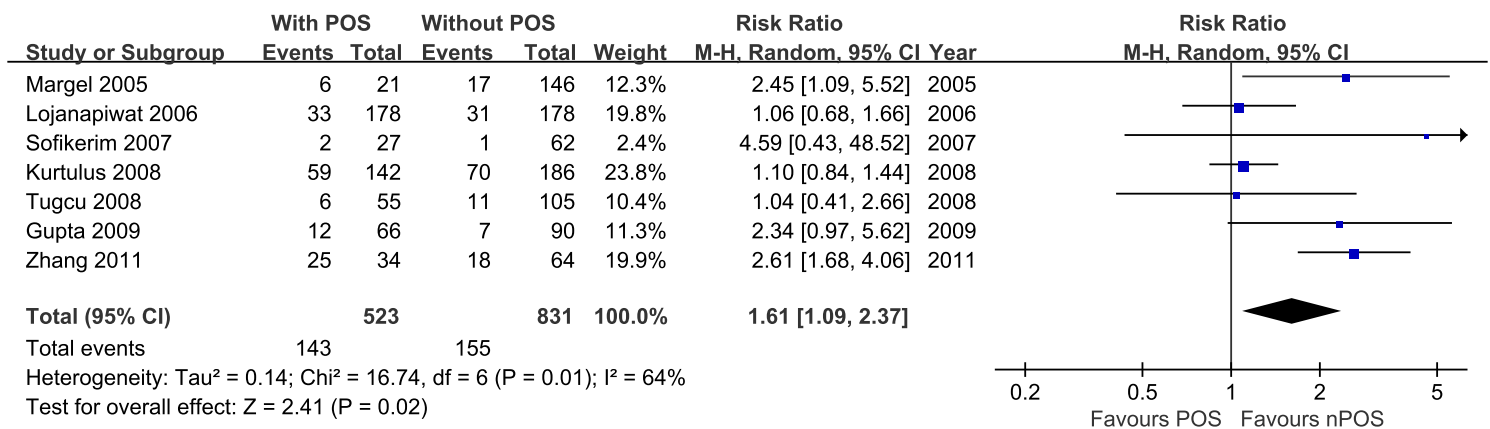
Supplementary Figure 32. Funnel plot of the comparison for total complication.



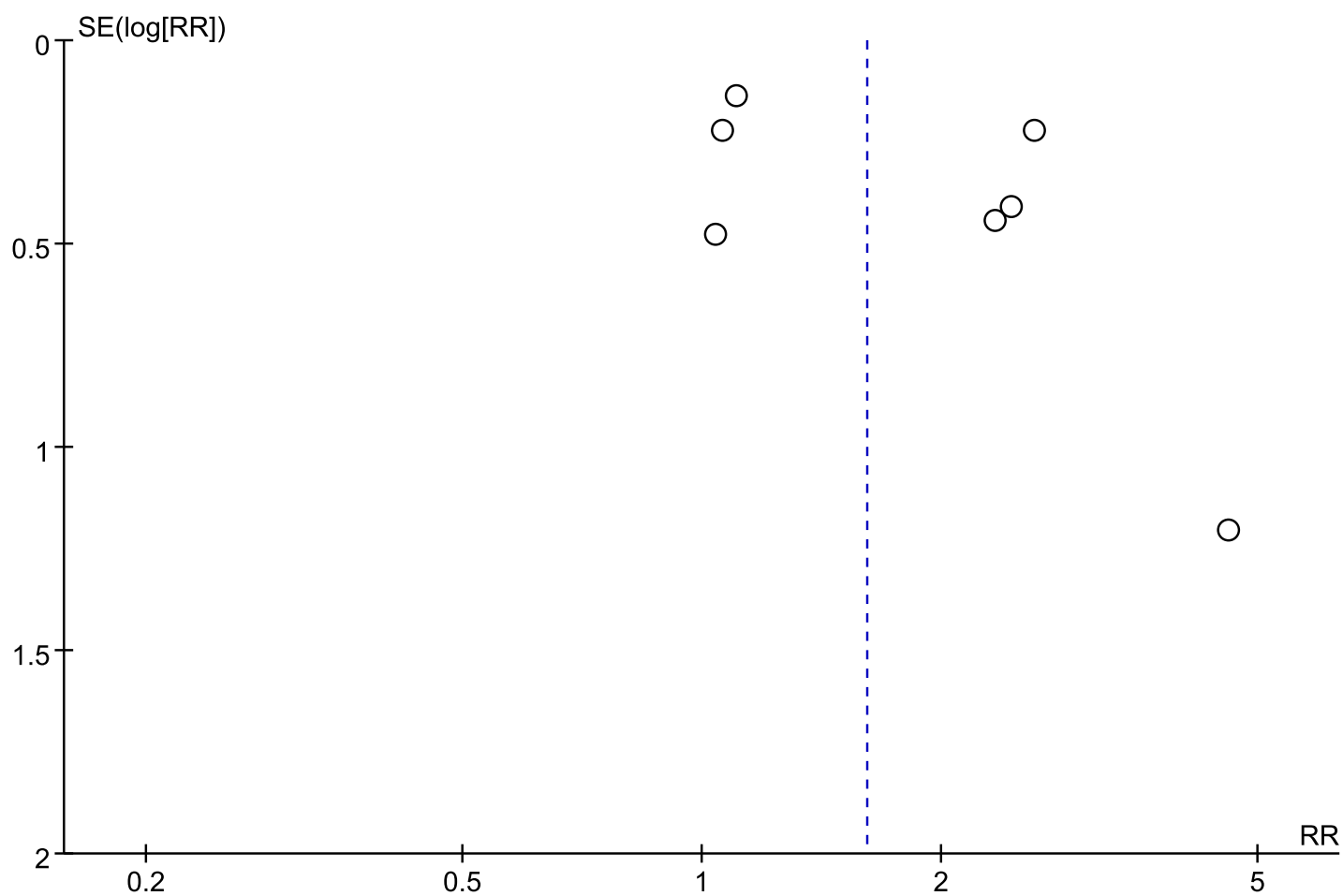
Supplementary Figure 33. Forest plot of the comparison for hospital stay (days). CI, confidence interval; IV, inverse variance; (n)POS, (non-) previous open surgery; SD, standard deviation.



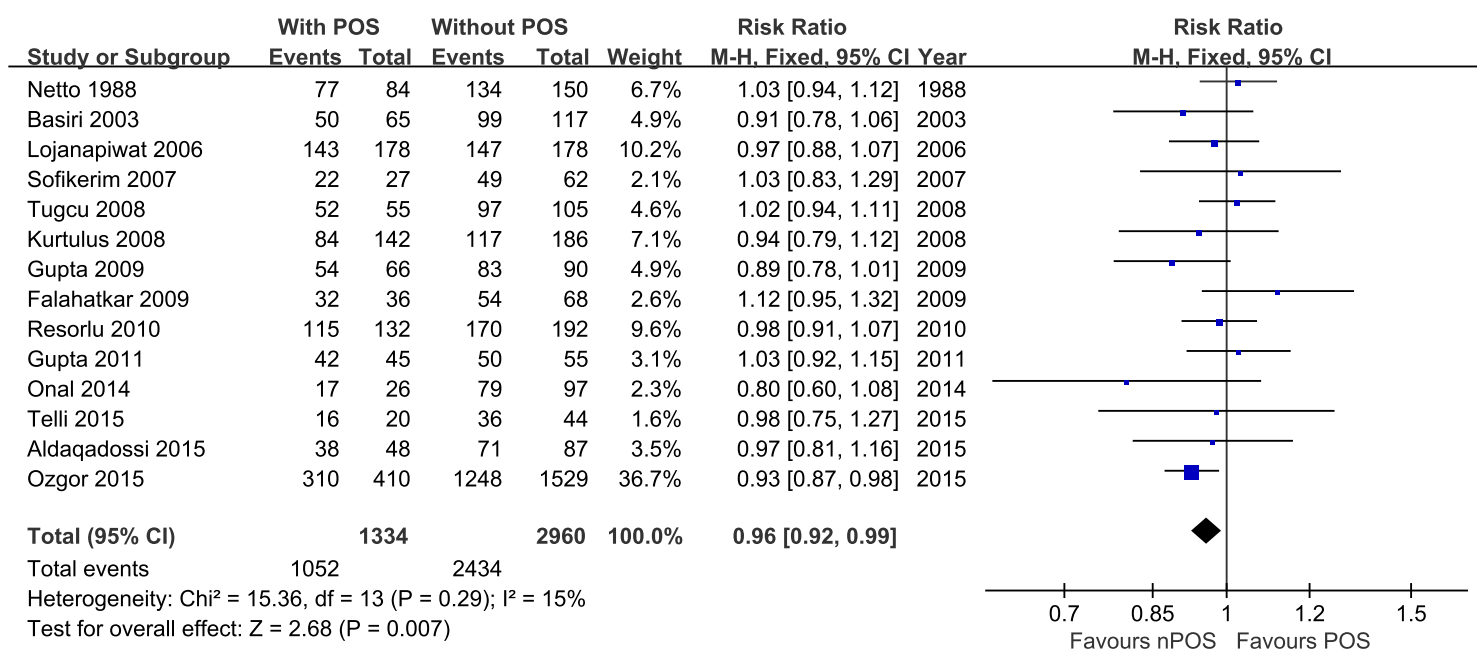
Supplementary Figure 34. Funnel plot of the comparison for hospital stay.



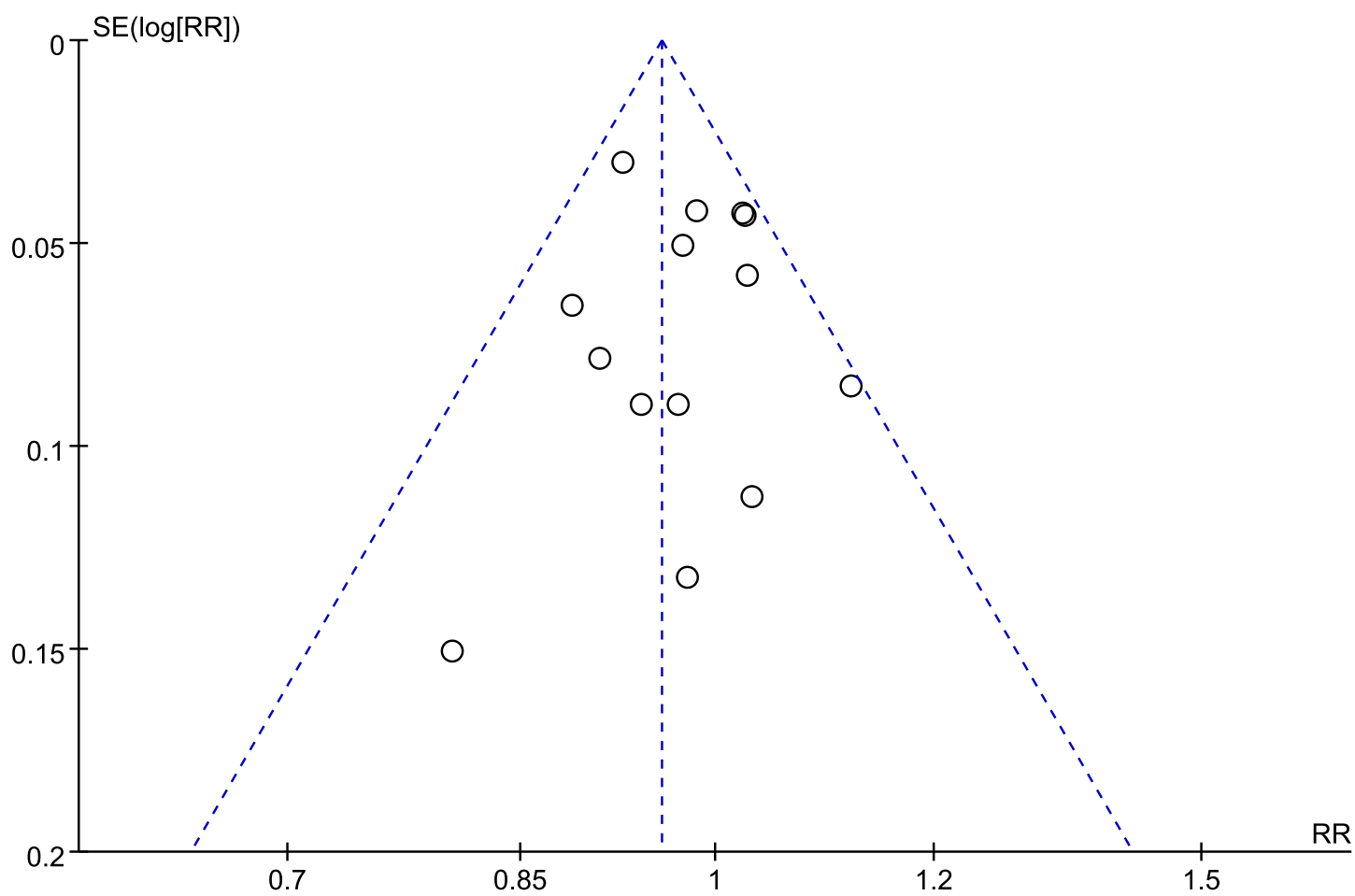
Supplementary Figure 35. Forest plot of the comparison for secondary treatment. CI, confidence interval; M-H, Mantel-Haenszel; (n)POS, (non-) previous open surgery.



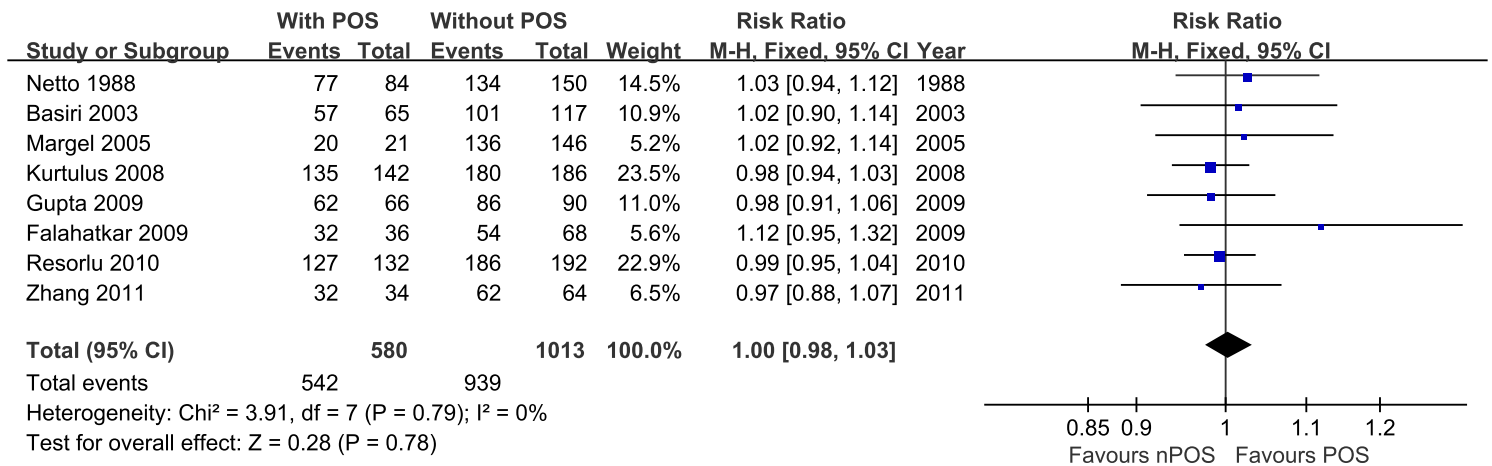
Supplementary Figure 36. Funnel plot of the comparison for secondary treatment.



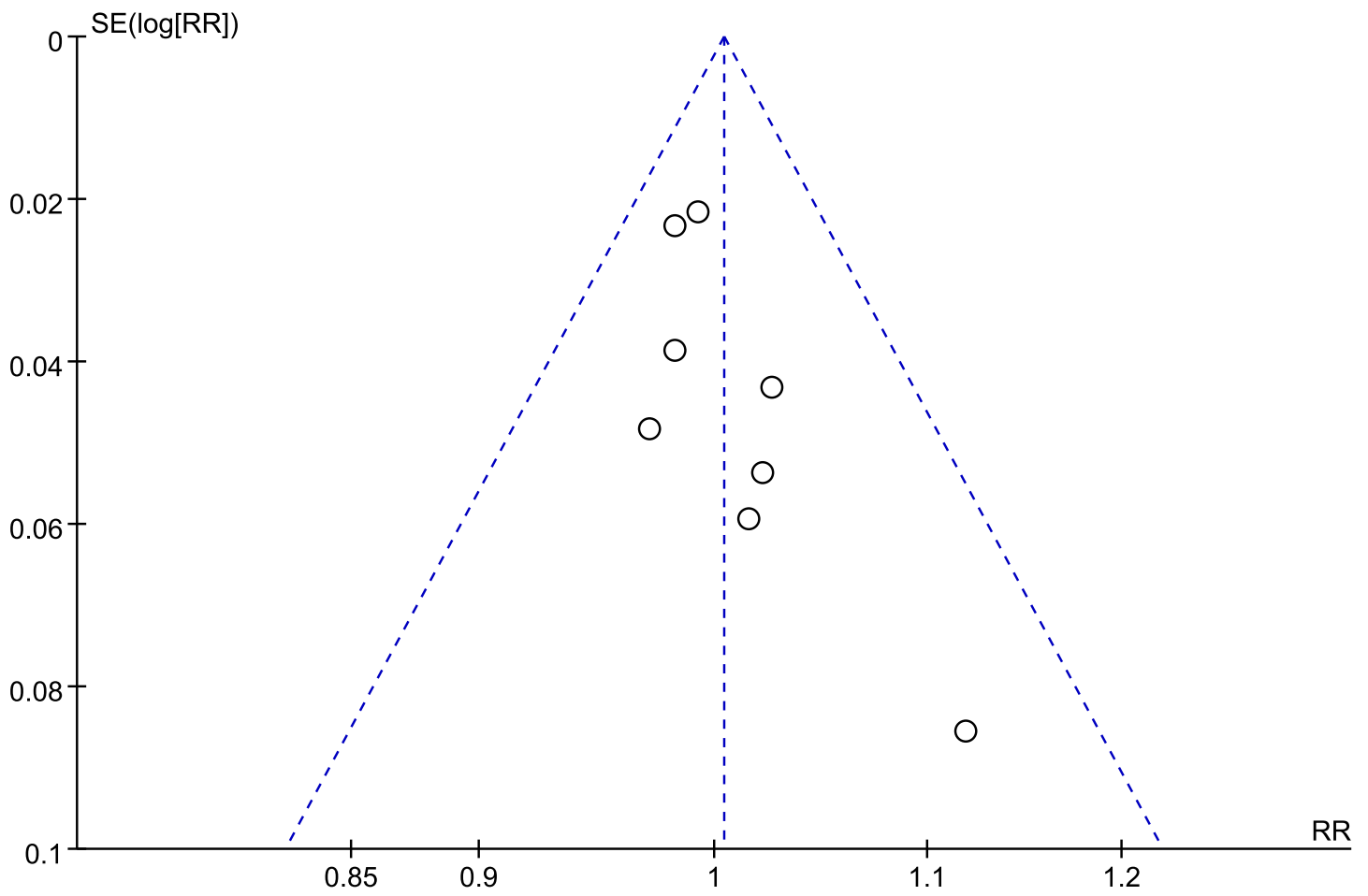
Supplementary Figure 37. Forest plot of the comparison for initial stone-free rate. CI, confidence interval; M-H, Mantel-Haenszel; (n)POS, (non-) previous open surgery.



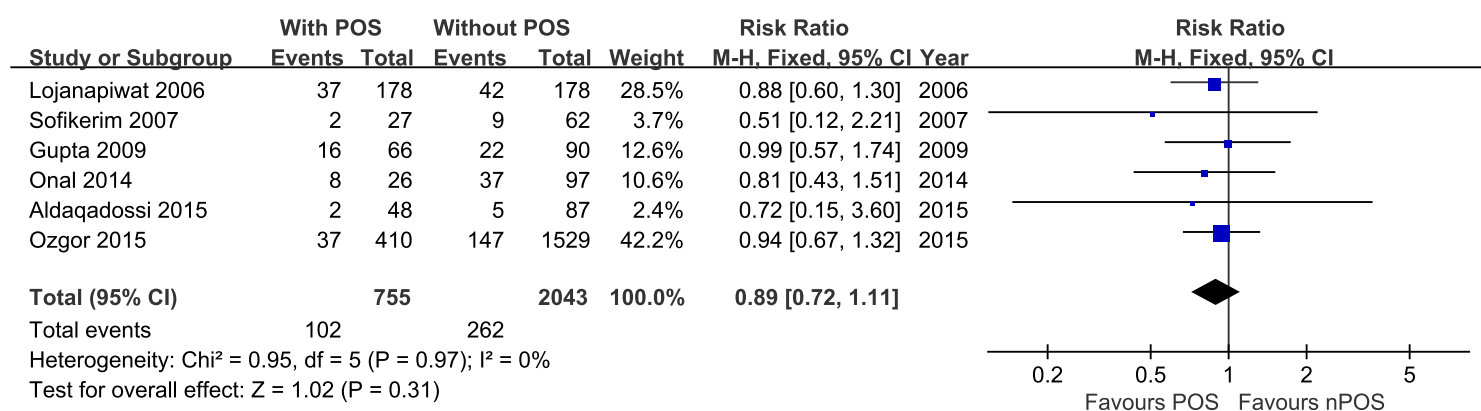
Supplementary Figure 38. Funnel plot of the comparison for initial stone-free rate.



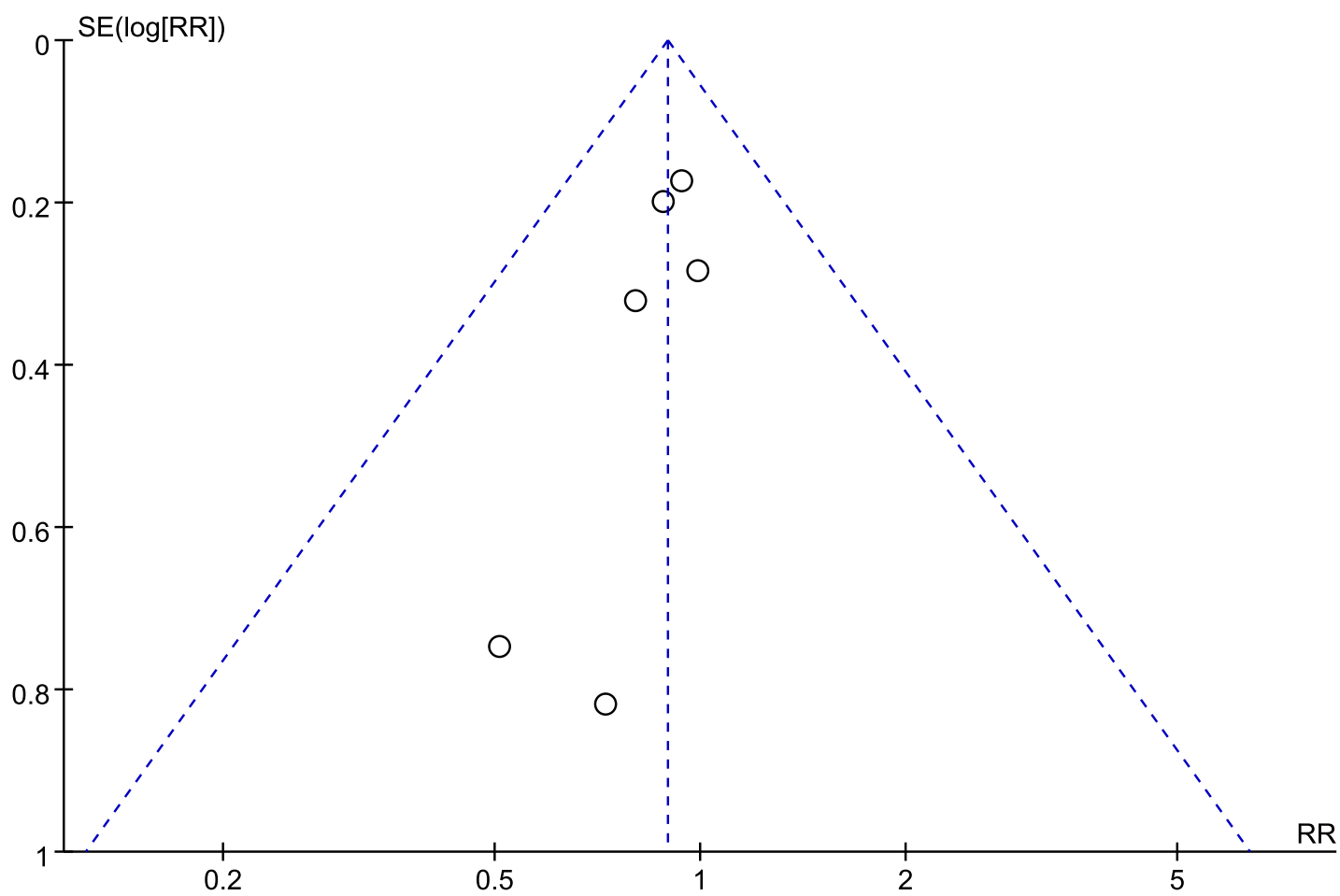
Supplementary Figure 39. Forest plot of the comparison for final stone-free rate. CI, confidence interval; M-H, Mantel-Haenszel; (n)POS, (non-) previous open surgery.



Supplementary Figure 40. Funnel plot of the comparison for final stone-free rate.



Supplementary Figure 41. Forest plot of the comparison for supracostal access. CI, confidence interval; M-H, Mantel-Haenszel; (n)POS, (non-) previous open surgery.



Supplementary Figure 42 Funnel plot of the comparison for supracostal access.