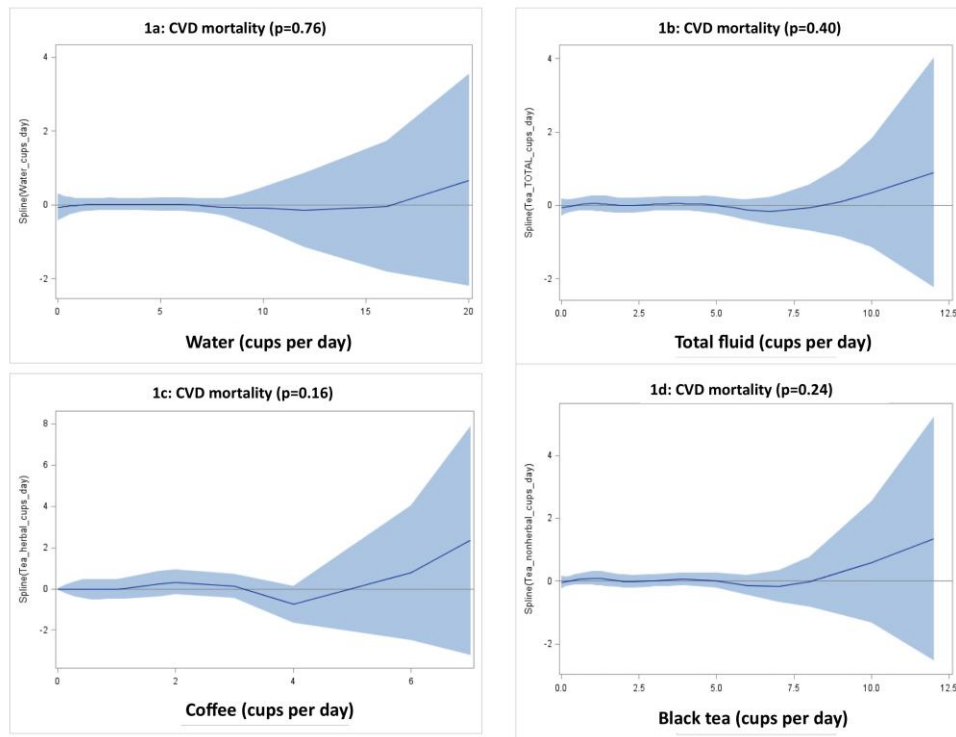


**Figure 1.** Restricted cubic splines to assess the linearity of the association between cups of (a) water, (b) total fluids, (c) coffee, (d) black tea and cardiovascular disease mortality. Blue line represents line of best fit with 95% confidence interval.



**Figure 2.** Restricted cubic splines to assess the linearity of the association between cups of (a) water, (b) total fluids, (c) coffee, (d) black tea and all-cause mortality. Blue line represents line of best fit with 95% confidence interval.

