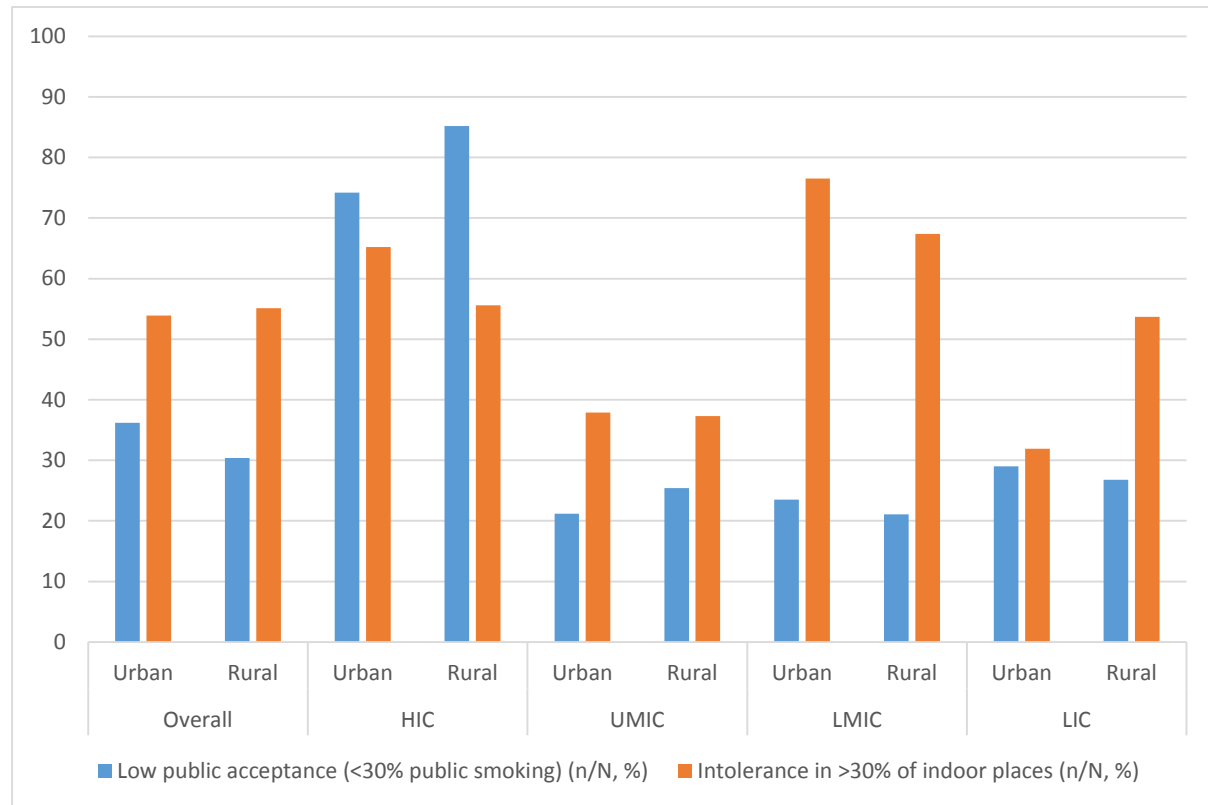
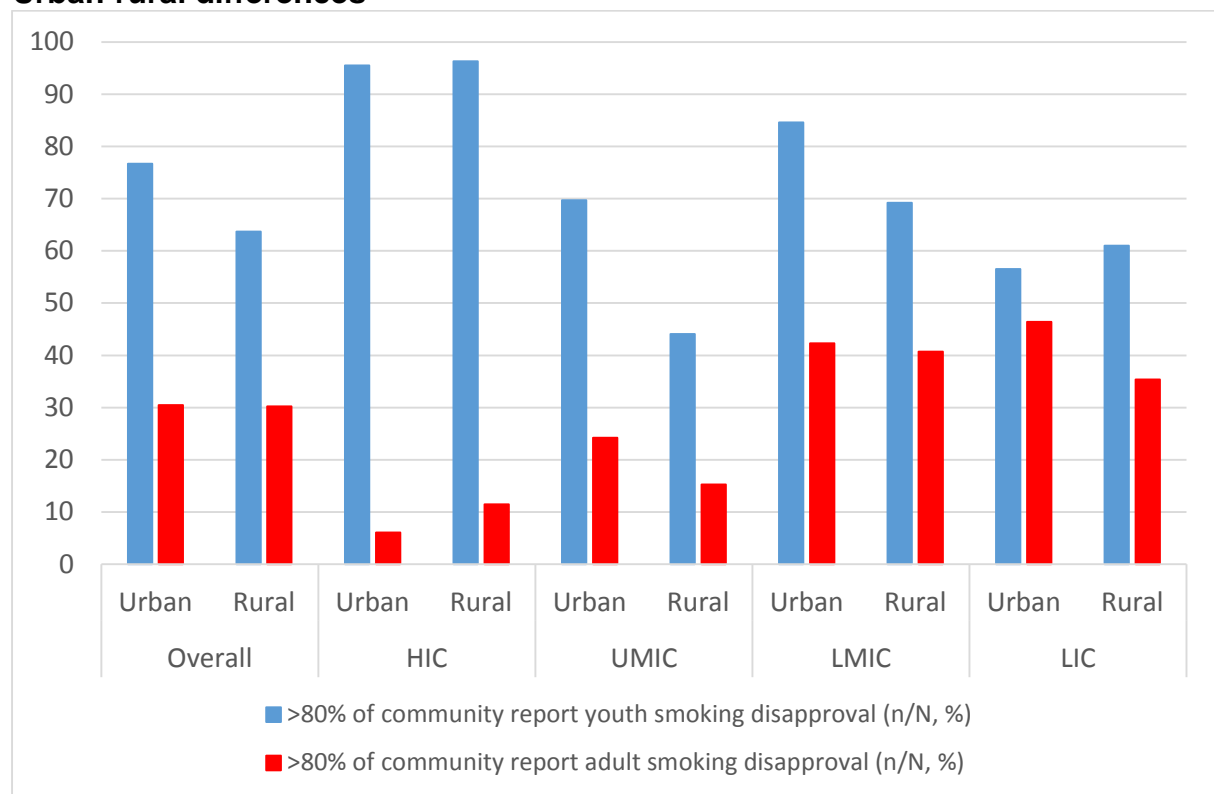


Appendix

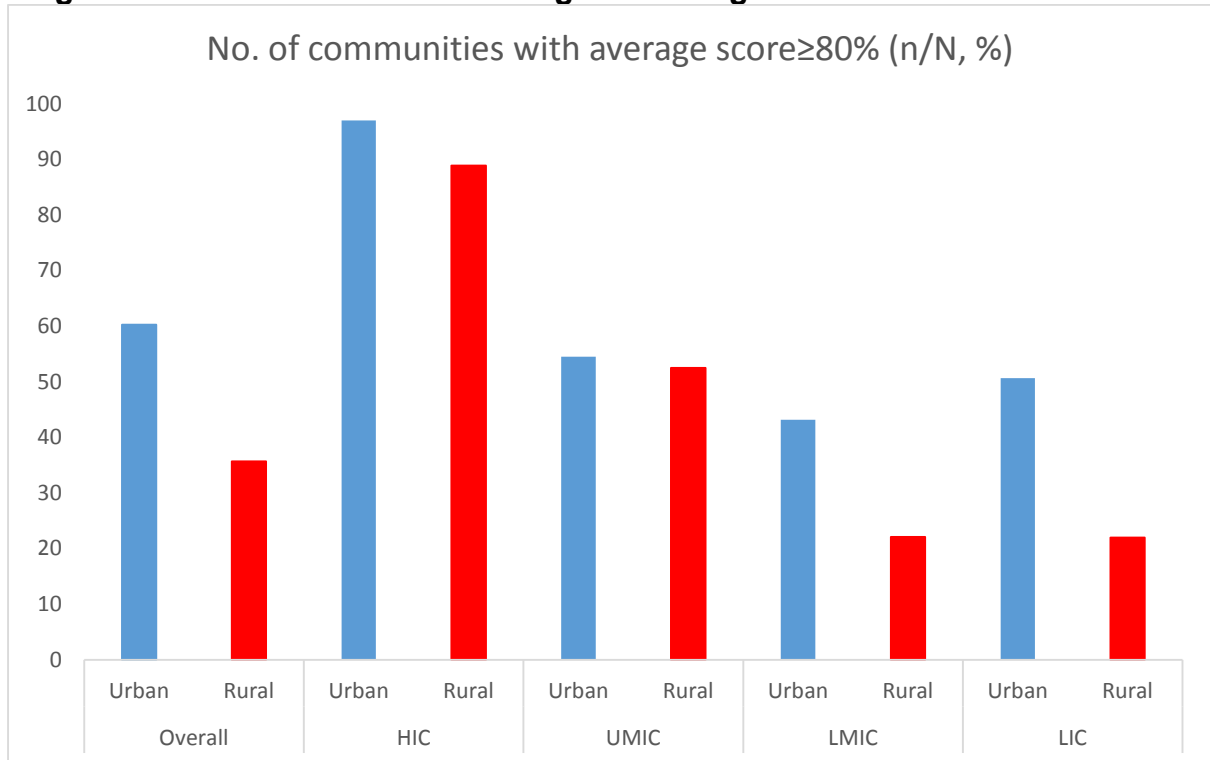
eFigure 1 Social acceptability – intolerance of smoking in public and indoor places: Urban-rural differences



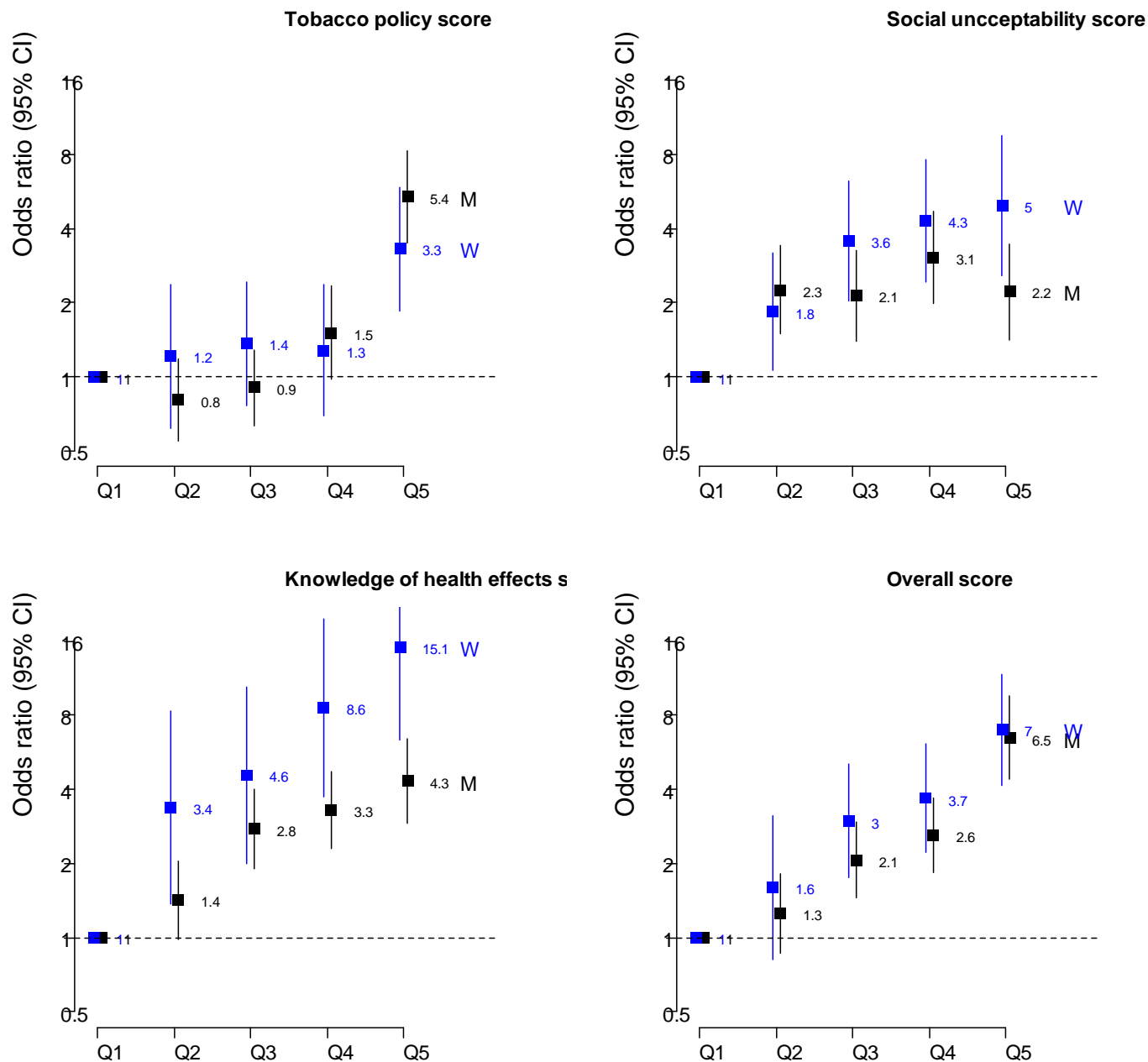
**eFigure 2 Social acceptability – disapproval of youth and adult smoking:
Urban-rural differences**



eFigure 3 – Communities with average knowledge score 80% or more



eFigure 4 The odds of quitting for quintiles of tobacco environment scores from multilevel logistic regression models adjusted by age (M = men and W = women)



Notes for eFigure 1: Odds ratios from multilevel logistic regression models of quitting with random effects specified for communities. Models are age-adjusted and stratified by sex with separate models fitted for each score. Sex interactions for the effect of summary scores on quitting were statistically significant ($P < 0.001$) in all models.

