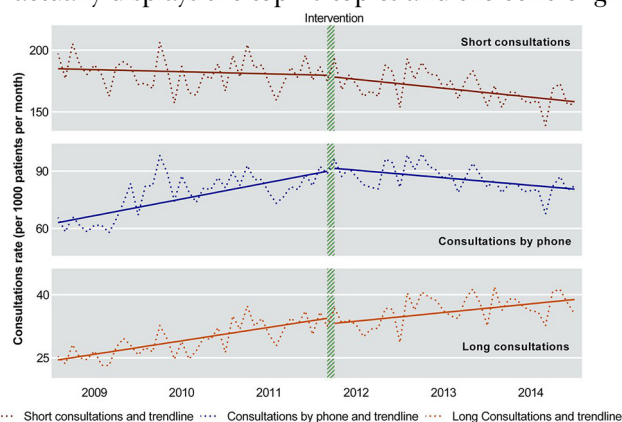


## Correction

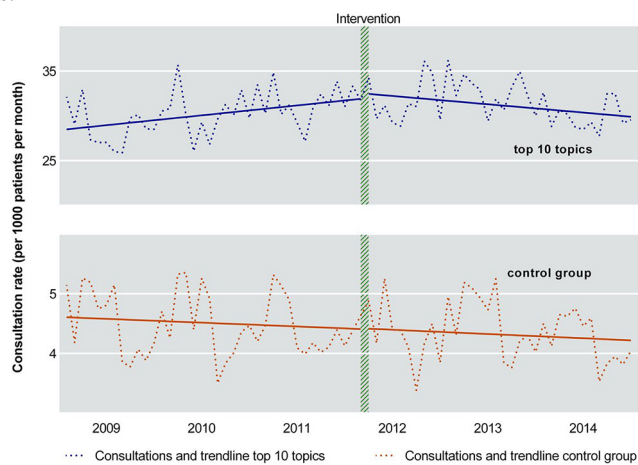
Spoelman WA, Bonten TN, de Waal MWM, *et al.* Effect of an evidence-based website on healthcare usage: an interrupted time-series study. *BMJ Open* 2016;6:e013166. doi: 10.1136/bmjopen-2016-013166

Figure 2 and Figure 3 were the wrong way round in the original publication. The correct Figures and their captions are shown below.

**Figure 2** Rate of short consultations, long consultations and consultations by phone with trend lines.’ actually displays the top 10 topics and the control group.



**Figure 3** Rate of consultations in the top 10 topics of the website and reference group with trend lines.’



**Open Access** This is an Open Access article distributed in accordance with the Creative Commons Attribution Non Commercial (CC BY-NC 4.0) license, which permits others to distribute, remix, adapt, build upon this work non-commercially, and license their derivative works on different terms, provided the original work is properly cited and the use is non-commercial. See: <http://creativecommons.org/licenses/by-nc/4.0/>

*BMJ Open* 2017;7:e015878. doi:10.1136/bmjopen-2016-013166corr1

