

Supplement to: **The global, regional and national burden of inflammatory bowel disease in 204 countries and territories from 1990 to 2019, based on Global Burden Disease Study 2019**

Contents:

Supplementary Figures

Supplementary Figure 1: Trends from 1990 to 2019 in number and age-standardised prevalence rate of IBD at the global level.

Supplementary Figure 2: The absolute number of deaths due to IBD for 204 countries and territories in 2019.

Supplementary Figure 3: The age-standardised death rate (per 100 000 population) of IBD for 204 countries and territories in 2019.

Supplementary Figure 4: The EAPC of age-standardised death rate for IBD in 204 countries and territories between 1990 and 2019.

Supplementary Figure 5: Trends from 1990 to 2019 in number and age-standardised death rate of IBD at the global level.

Supplementary Figure 6: The absolute number of DALYs due to IBD for 204 countries and territories in 2019.

Supplementary Figure 7: The absolute number of incident cases due to IBD for 204 countries and territories in 2019.

Supplementary Figure 8: The absolute number of YLLs due to IBD for 204 countries and territories in 2019.

Supplementary Figure 9: The absolute number of YLDs due to IBD for 204 countries and territories in 2019.

Supplementary Figure 10: The age-standardised DALY rate (per 100 000 population) of IBD for 204 countries and territories in 2019.

Supplementary Figure 11: The EAPC of age-standardised DALY rate for IBD in 204 countries and territories between 1990 and 2019.

Supplementary Figure 12: The EAPC of age-standardised incidence rate for IBD in 204 countries and territories between 1990 and 2019.

Supplementary Figure 13: The EAPC of age-standardised YLL rate for IBD in 204 countries and territories between 1990 and 2019.

Supplementary Figure 14: The EAPC of age-standardised YLD rate for IBD in 204 countries and territories between 1990 and 2019.

Supplementary Figure 15: Global counts and age-specific rates of YLLs and YLDs due to IBD across age group in 2019.

Supplementary Figure 16: Trends from 1990 to 2019 in number and age-standardised DALY rate of IBD at the global level.

Supplementary Tables

Supplementary Table 1: Prevalent cases, deaths and disability adjusted life years (DALYs) of inflammatory bowel disease (IBD) in 1990 and 2019 and their percentage change from 1990 to 2019

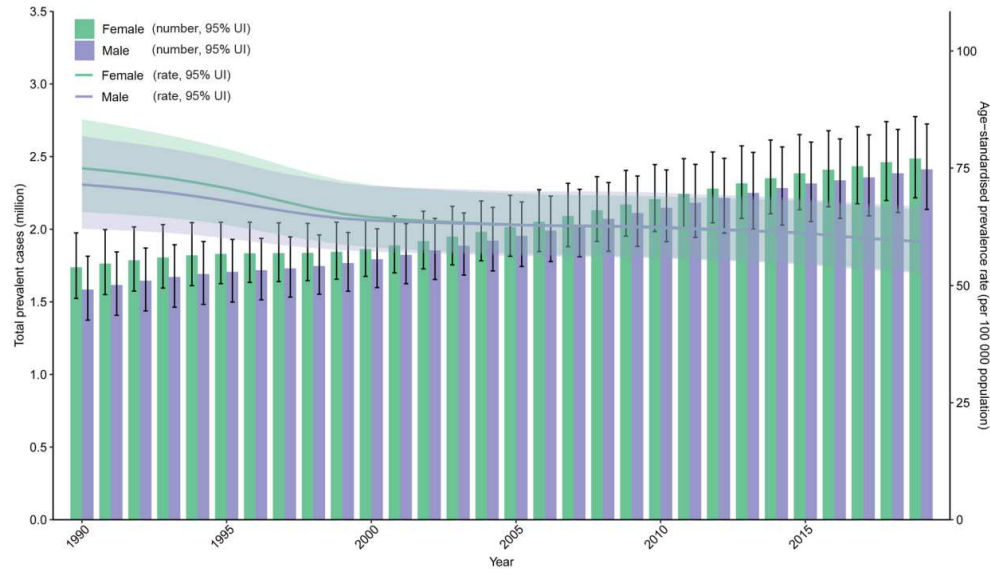
Supplementary Table 2: Prevalent cases, deaths and disability adjusted life years (DALYs) for inflammatory bowel disease (IBD) by 204 countries or territories in 1990 and 2019, and their percentage change from 1990 to 2019.

Supplementary Table 3: Age-standardised prevalence, death and DALY rates for inflammatory bowel disease (IBD) by 204 countries or territories in 1990 and 2019, and their temporal trends from 1990 to 2019.

Supplementary Table 4: Incident cases, YLLs and YLDs of inflammatory bowel disease (IBD) in 1990 and 2019 and their percentage change from 1990 to 2019.

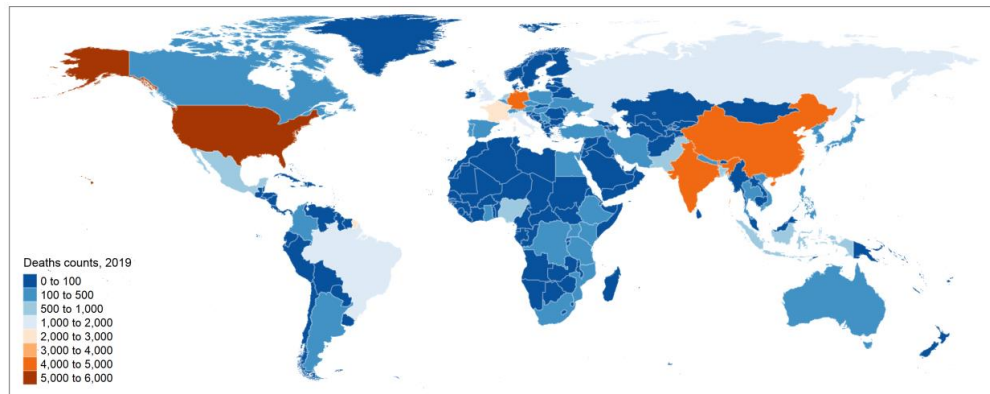
Supplementary Table 5: Age-standardised incidence, YLL and YLD rates for inflammatory bowel disease (IBD) in 1990 and 2019 and their temporal trends from 1990 to 2019.

Supplementary Figure 1. Trends from 1990 to 2019 in number and age-standardised prevalence rate of IBD at the global level.



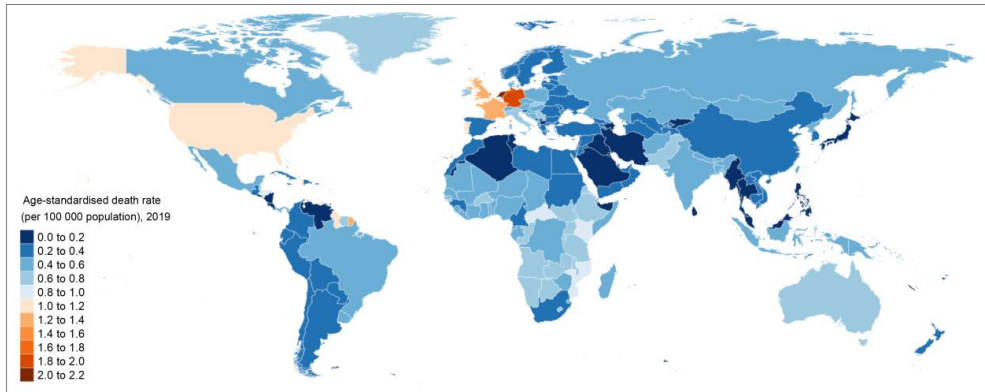
Error bars indicate the 95% uncertainty interval (UI) for number of prevalent cases. Shading indicates the 95% UI for the age-standardised prevalence rate. IBD, inflammatory bowel disease.

Supplementary Figure 2. The absolute number of deaths due to IBD for 204 countries and territories in 2019.



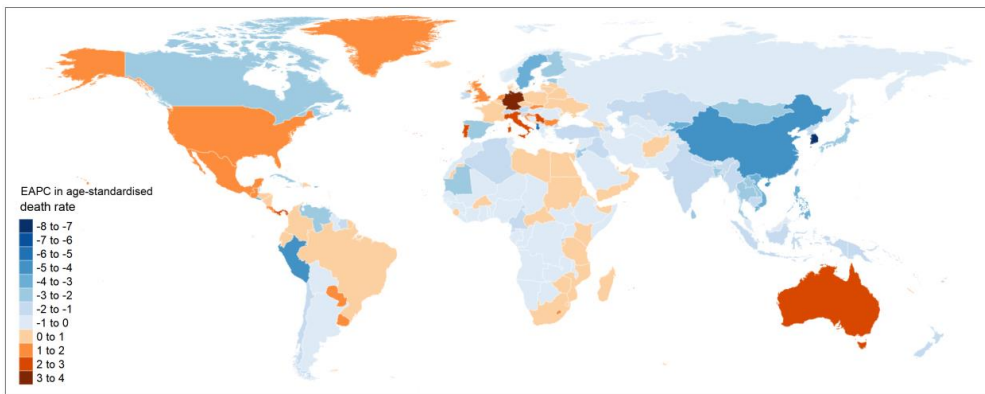
IBD, inflammatory bowel disease.

Supplementary Figure 3. The age-standardised death rate (per 100 000 population) of IBD for 204 countries and territories in 2019.



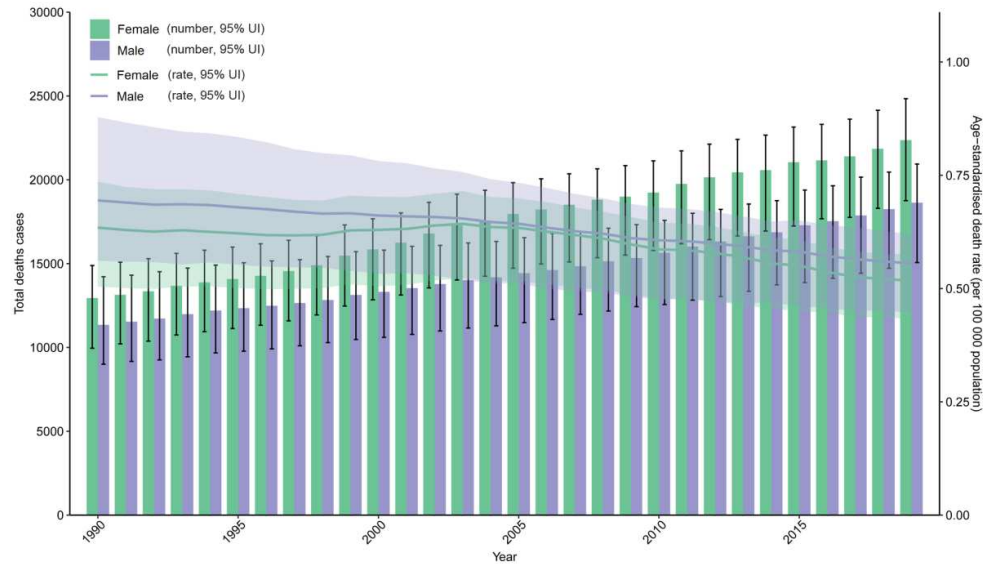
IBD, inflammatory bowel disease.

Supplementary Figure 4. The EAPC of age-standardised death rate for IBD in 204 countries and territories between 1990 and 2019.



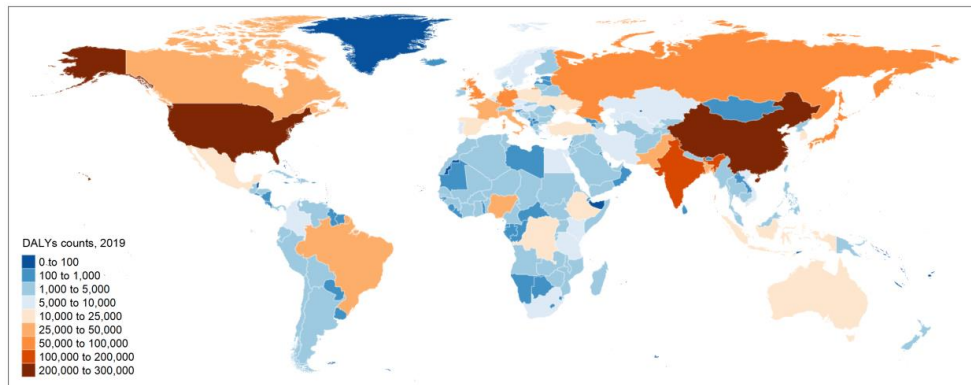
EAPC, estimated annual percentage change; IBD, inflammatory bowel disease.

Supplementary Figure 5. Trends from 1990 to 2019 in number and age-standardised death rate of IBD at the global level.



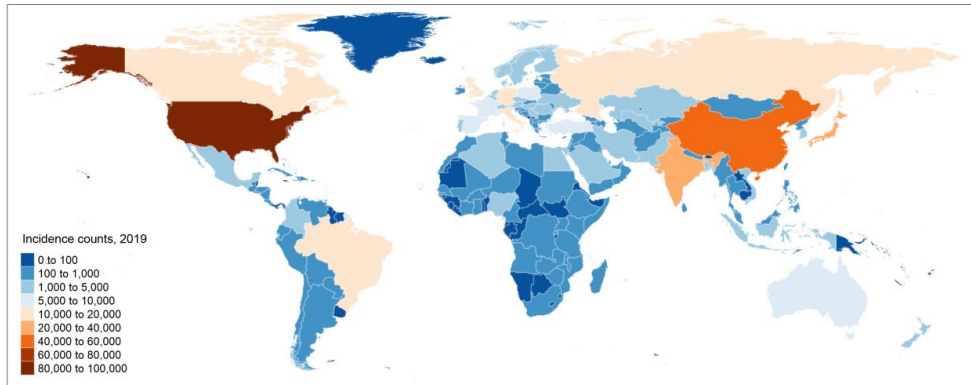
Error bars indicate the 95% uncertainty interval (UI) for number of death cases. Shading indicates the 95% UI for the age-standardised death rate. IBD, inflammatory bowel disease.

Supplementary Figure 6. The absolute number of DALYs due to IBD for 204 countries and territories in 2019.



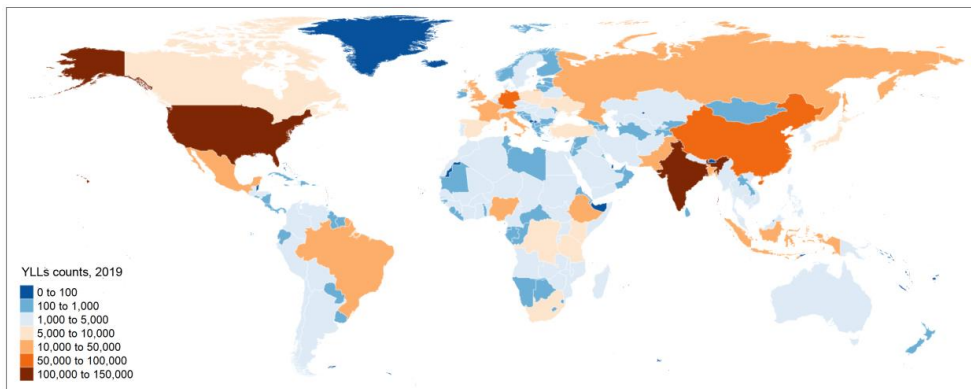
DALYs, disability adjusted life years; IBD, inflammatory bowel disease.

Supplementary Figure 7. The absolute number of incident cases due to IBD for 204 countries and territories in 2019.



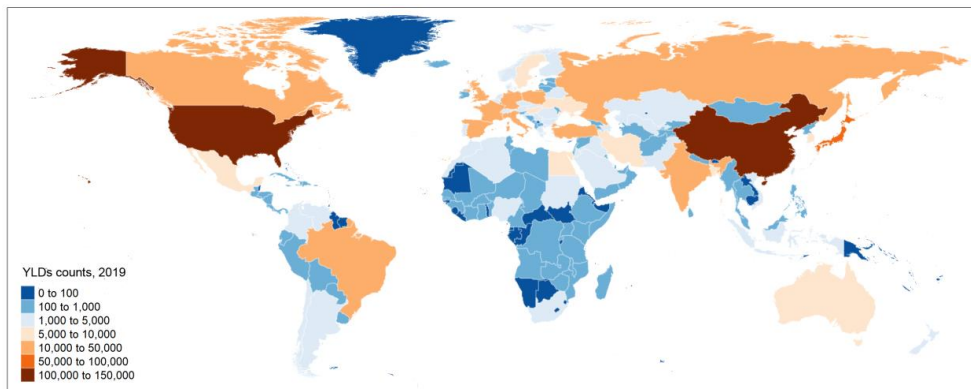
IBD, inflammatory bowel disease.

Supplementary Figure 8. The absolute number of YLLs due to IBD for 204 countries and territories in 2019.



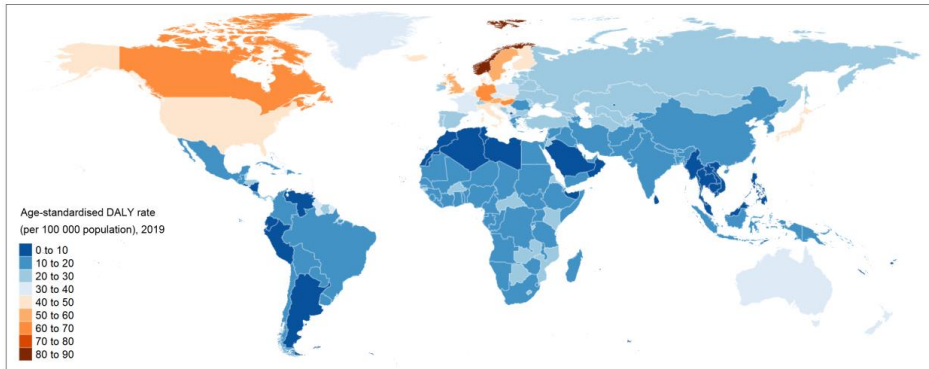
IBD, inflammatory bowel disease; YLLs, years of life lost.

Supplementary Figure 9. The absolute number of YLDs due to IBD for 204 countries and territories in 2019.



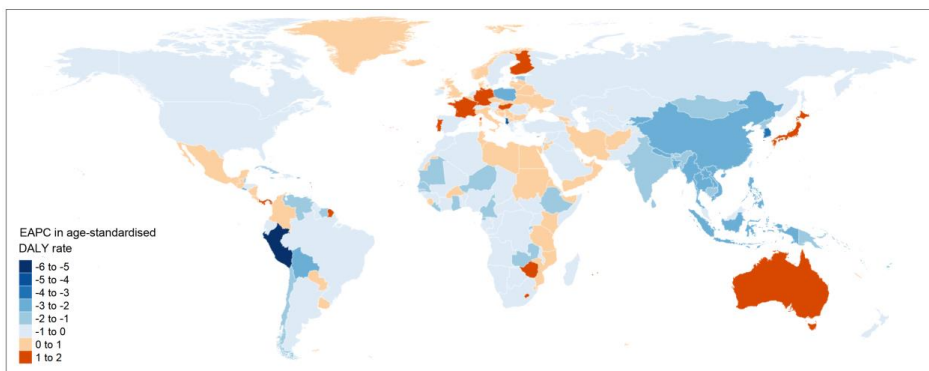
IBD, inflammatory bowel disease; YLDs, years of life lived with disability.

Supplementary Figure 10. The age-standardised DALY rate (per 100 000 population) of IBD for 204 countries and territories in 2019.



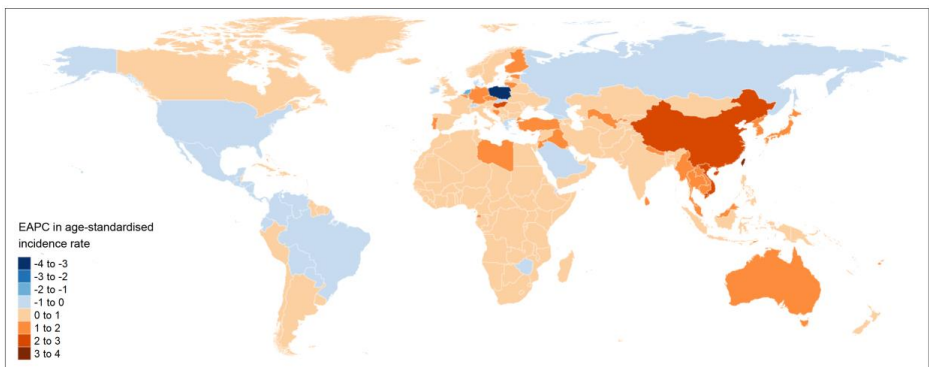
DALY, disability adjusted life year; IBD, inflammatory bowel disease.

Supplementary Figure 11. The EAPC of age-standardised DALY rate for IBD in 204 countries and territories between 1990 and 2019.



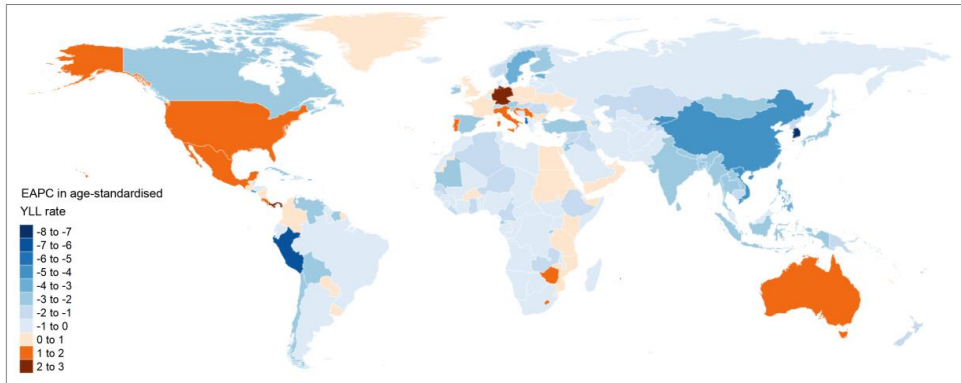
DALY, disability adjusted life year; EAPC, estimated annual percentage change; IBD, inflammatory bowel disease.

Supplementary Figure 12. The EAPC of age-standardised incidence rate for IBD in 204 countries and territories between 1990 and 2019.



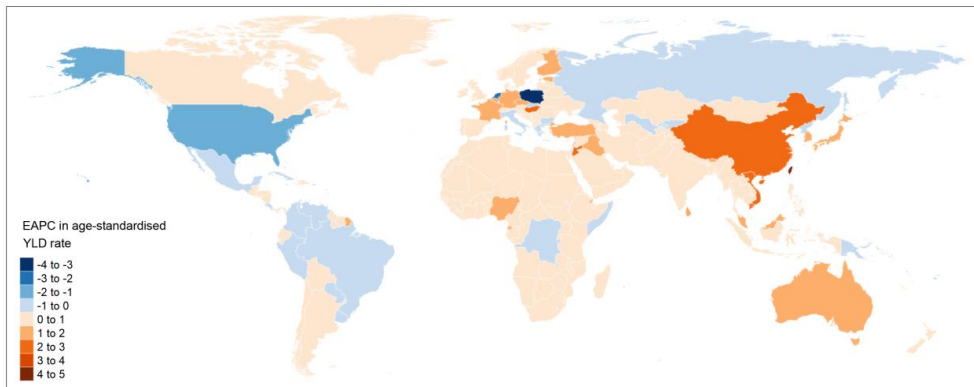
EAPC, estimated annual percentage change; IBD, inflammatory bowel disease.

Supplementary Figure 13. The EAPC of age-standardised YLL rate for IBD in 204 countries and territories between 1990 and 2019.



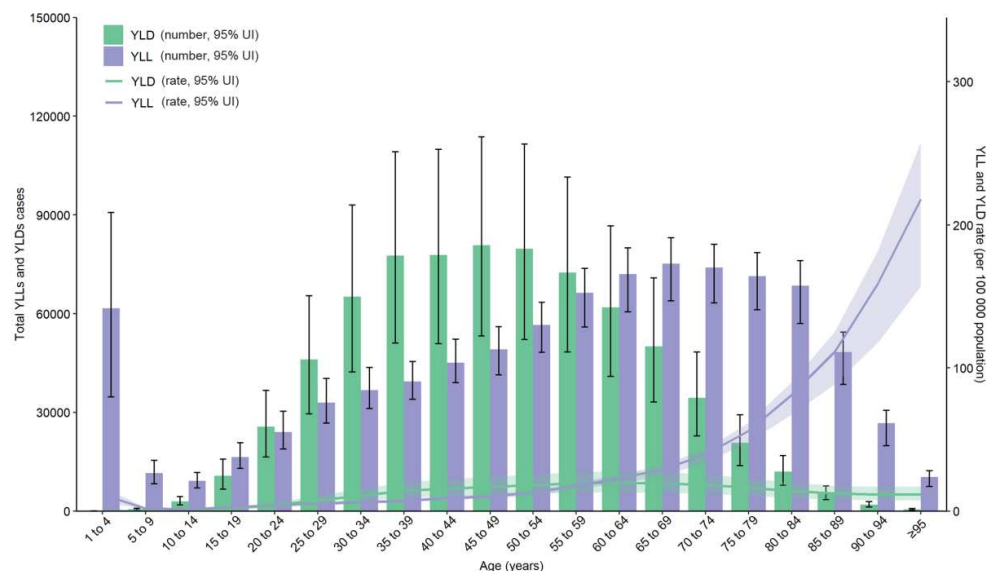
EAPC, estimated annual percentage change; IBD, inflammatory bowel disease; YLL, years of life lost.

Supplementary Figure 14. The EAPC of age-standardised YLD rate for IBD in 204 countries and territories between 1990 and 2019.



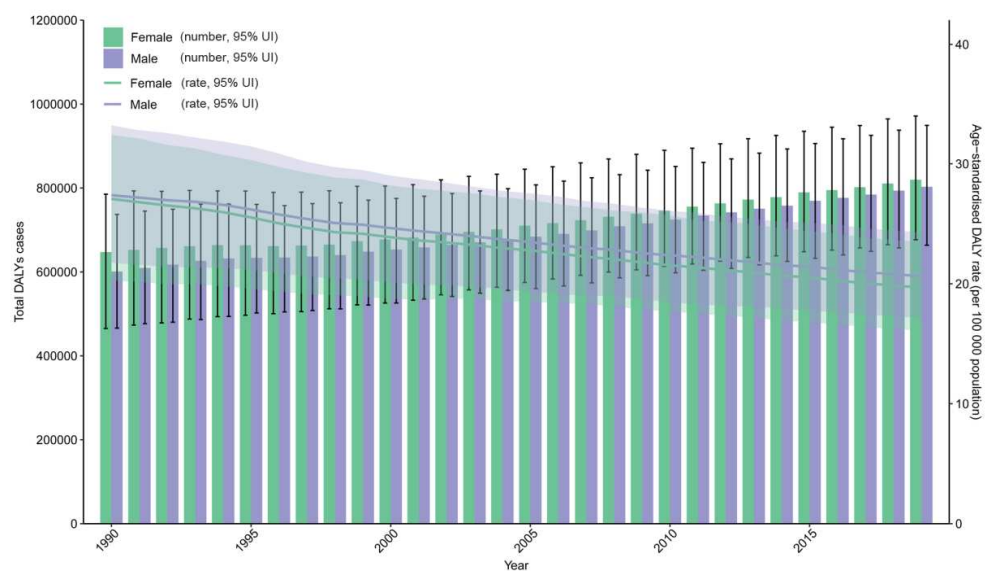
EAPC, estimated annual percentage change; IBD, inflammatory bowel disease; YLD, years of life lived with disability.

Supplementary Figure 15. Global counts and age-specific rates of YLLs and YLDs due to IBD across age group in 2019.



Error bars indicate the 95% uncertainty interval (UI) for YLLs and YLDs. Shading indicates the 95% UI for the rates. IBD, inflammatory bowel disease; YLDs, years of life lived with disability; YLLs, years of life lost.

Supplementary Figure 16. Trends from 1990 to 2019 in number and age-standardised DALY rate of IBD at the global level.



Error bars indicate the 95% uncertainty interval (UI) for number of DALYs cases. Shading indicates the 95% UI for the age-standardised DALY rate. DALY, disability adjusted life year; IBD, inflammatory bowel disease.

Supplementary Table 1 Prevalent cases, deaths and disability adjusted life years (DALYs) of inflammatory bowel disease (IBD) in 1990 and 2019 and their percentage change from 1990 to 2019

Characteristics	Prevalent cases			Deaths			DALYs		
	1990 No. (95%UI)	2019 No. (95%UI)	Percentage change (%) (95%UI)	1990 No. (95%UI)	2019 No. (95%UI)	Percentage change (%) (95%UI)	1990 No. (95%UI)	2019 No. (95%UI)	Percentage change (%) (95%UI)
Global	3322132 (2903627 to 3790430)	4898558 (4353233 to 5499296)	47.45 (43.76 to 51.43)	24295 (20258 to 28376)	40998 (34933 to 44661)	68.75 (47.12 to 94.62)	1248275 (963014 to 1503174)	1622498 (1356296 to 1915042)	29.98 (14.83 to 50.21)
Sex									
Male	1584462 (1374414 to 1814399)	2411840 (2136219 to 2724369)	52.22 (48.47 to 56.34)	11347 (9002 to 14218)	18633 (15060 to 20938)	64.21 (37.52 to 90.74)	600963 (466033 to 736983)	802748 (663563 to 949342)	33.58 (15.75 to 53.92)
Female	1737670 (1523309 to 1974864)	2486718 (2216240 to 2775262)	43.11 (39.03 to 47.31)	12947 (9953 to 14888)	22365 (18759 to 24838)	72.74 (47.65 to 115.99)	647311 (465166 to 785221)	819751 (676700 to 971584)	26.64 (10.70 to 54.99)
SDI quintile									
High	1883348 (1654416 to 2128434)	2283717 (2079286 to 2493360)	21.26 (15.68 to 27.38)	7386 (6656 to 8731)	17801 (14215 to 19552)	141.02 (73.28 to 161.46)	415485 (323781 to 520634)	603330 (489511 to 729627)	45.21 (26.78 to 56.21)
High-middle	942961 (817123 to 1086707)	1362491 (1206918 to 1538822)	44.49 (40.70 to 48.74)	5045 (4476 to 5782)	7272 (6519 to 8110)	44.13 (24.31 to 65.11)	288336 (236216 to 344578)	352794 (285252 to 432623)	22.36 (12.11 to 32.44)
Middle	301457 (252149 to 355140)	818871 (688348 to 968484)	171.64 (163.13 to 181.21)	5425 (4146 to 6768)	6598 (5602 to 7341)	21.61 (-2.11 to 58.92)	248139 (184995 to 297495)	291088 (240412 to 345833)	17.31 (-3.67 to 60.14)
Low-middle	152118 (124851 to 184061)	335789 (278324 to 403122)	120.74 (115.27 to 126.61)	4533 (3018 to 6152)	6180 (4994 to 7392)	36.34 (9.54 to 81.14)	203020 (126472 to 268417)	236584 (189248 to 283804)	16.53 (-9.40 to 65.68)
Low	41264 (33866 to 50406)	95941 (78454 to 116802)	132.51 (127.59 to 136.94)	1893 (1144 to 2626)	3125 (2442 to 4016)	65.06 (21.70 to 141.90)	92718 (45634 to 147570)	137867 (100264 to 180825)	48.69 (1.39 to 148.81)
GBD region									
Andean Latin America	4294 (3643 to 5026)	10380 (8875 to 12027)	141.73 (131.47 to 153.82)	168 (99 to 249)	144 (111 to 182)	-14.37 (-45.71 to 56.11)	10768 (5527 to 17349)	5942 (4666 to 7395)	-44.82 (-67.80 to 12.24)
Australasia	24135 (20445 to 28083)	53225 (47167 to 59881)	120.53 (104.13 to 137.71)	117 (103 to 139)	400 (291 to 465)	241.68 (120.09 to 298.29)	5802 (4531 to 7299)	13328 (10488 to 16560)	129.69 (92.95 to 151.94)

		13360								19.44
Caribbean	8194 (7012 to 9634)	(11262 to 15892)	63.04 (55.79 to 71.54)	157 (118 to 208)	210 (156 to 264)	33.66 (3.39 to 70.80)	7451 (5008 to 11792)	8900 (6523 to 11709)		(-16.93 to 53.06)
Central Asia	42100 (35493 to 49944)	72034 (60489 to 86073)	71.10 (65.37 to 77.74)	215 (167 to 251)	249 (218 to 288)	15.70 (-1.33 to 47.63)	15952 (12800 to 19230)	20237 (16357 to 24806)		26.86 (10.10 to 46.33)
Central Europe	290304 (249715 to 338920)	236196 (214732 to 259804)	-18.64 (-24.57 to -11.98)	604 (563 to 696)	958 (799 to 1104)	58.66 (24.18 to 83.87)	61546 (47417 to 77414)	54694 (42729 to 67570)		-11.13 (-18.70 to -3.30)
Central Latin America	40471 (34451 to 47294)	81606 (69904 to 95542)	101.64 (96.51 to 107.43)	301 (270 to 330)	854 (702 to 997)	183.85 (135.53 to 232.71)	18096 (15456 to 20849)	36178 (30219 to 43014)		99.92 (74.40 to 127.28)
Central Sub-Saharan Africa	2781 (2267 to 3400)	7015 (5690 to 8639)	152.29 (138.04 to 168.85)	193 (118 to 301)	355 (254 to 497)	84.05 (16.03 to 200.18)	9491 (4855 to 17734)	15574 (10733 to 22385)		64.1 (-9.96 to 213.74)
East Asia	244790 (202981 to 291054)	925074 (788347 to 1085238)	277.90 (260.33 to 300.79)	5734 (4169 to 7374)	4983 (4074 to 5769)	-13.11 (-36.64 to 22.31)	240231 (167510 to 299891)	239963 (187123 to 299808)		-0.11 (-25.58 to 54.11)
Eastern Europe	233969 (199922 to 274757)	237672 (203164 to 276577)	1.58 (-0.80 to 4.10)	1305 (992 to 1507)	1633 (1370 to 1865)	25.06 (5.75 to 56.78)	72932 (57526 to 88869)	77123 (63287 to 94008)		5.75 (-4.27 to 21.34)
Eastern Sub-Saharan Africa	7067 (5804 to 8596)	18830 (15395 to 22997)	166.43 (160.39 to 173.14)	697 (462 to 1111)	1253 (923 to 1678)	79.64 (7.37 to 192.58)	35480 (16916 to 68481)	52928 (39435 to 74044)		49.18 (-19.5 to 202.23)
High-income Asia Pacific	255028 (213480 to 302123)	459062 (403027 to 520418)	80.00 (65.57 to 95.92)	685 (439 to 789)	694 (556 to 912)	1.33 (-19.66 to 85.83)	51699 (38591 to 66563)	78601 (55261 to 105049)		52.04 (37.02 to 68.81)
High-income North America	1100006 (961428 to 1248970)	920750 (859032 to 982587)	-16.30 (-22.94 to -9.05)	2442 (2189 to 2964)	6314 (5076 to 6886)	158.55 (83.64 to 182.08)	209072 (155328 to 270983)	245234 (200564 to 294018)		17.30 (2.00 to 33.02)
North Africa and Middle East	89159 (76544 to 102596)	282534 (239506 to 334478)	216.89 (196.52 to 234.98)	592 (407 to 836)	1033 (866 to 1226)	74.43 (20.30 to 164.45)	35438 (25569 to 46318)	72755 (56928 to 91112)		105.30 (56.49 to 171.10)
Oceania	199 (159 to 240)	417 (338 to 509)	109.69 (96.12 to 124.69)	22 (14 to 31)	36 (26 to 51)	65.38 (12.06 to 142.01)	1036 (602 to 1625)	1696 (1107 to 2576)		63.81 (3.61 to 170.09)
South Asia	157942 (127077 to 195839)	335746 (272330 to 413946)	112.58 (106.64 to 120.13)	3864 (2533 to 5504)	5702 (4286 to 7410)	47.58 (16.55 to 93.31)	171448 (105178 to 227334)	221978 (166881 to 278494)		29.47 (1.12 to 76.01)
Southeast Asia	16557 (13040 to 20323)	48152 (39527 to 58063)	190.83 (174.97 to 212.05)	1230 (741 to 1536)	1498 (1139 to 1771)	21.79 (-3.10 to 72.54)	45316 (30762 to 56838)	46686 (38847 to 55186)		3.02 (-20.10 to 46.45)
Southern Latin America	9153 (7618 to 10754)	15243 (12896 to 17590)	66.53 (58.55 to 74.68)	139 (123 to 151)	236 (210 to 280)	69.36 (46.49 to 101.01)	5248 (4578 to 5993)	7740 (6670 to 9152)		47.49 (32.63 to 65.73)

		18023)								
Southern			116.54							
Sub-Saharan	3760 (3109	8141 (6736	(109.70 to	138 (99 to	240 (198 to	74.44 (31.74	6615 (4279	9230 (7542	39.54 (-0.67	
Africa	to 4581)	to 9864)	124.72)	169)	278)	to 161.11)	to 9518)	to 10926)	to 121.74)	
	74856	117653				129.84	27724	46997		
Tropical Latin	(65373 to	(102012 to	57.17 (51.82	455 (400 to	1047 (950	(109.36 to	(23589 to	(40115 to	69.52 (59.16	
America	85425)	134397)	to 63.44)	492)	to 1217)	167.46)	32357)	54972)	to 83.74)	
	707145	1026504				160.46	185733	310691		
Western Europe	(634121 to	(925440 to	45.16 (41.37	4600 (4132	11981 (9244	(66.17 to	(149509 to	(255911 to	67.28 (34.40	
	786986)	1127578)	to 48.78)	to 5864)	to 13315)	190.17)	227830)	371106)	to 79.72)	
Western	10222	28965	183.36				31197	56026		
Sub-Saharan	(8432 to	(23820 to	(178.45 to	634 (365 to	1178 (805 to	85.67 (40.49	(14381 to	(35327 to	79.59 (30.21	
Africa	12421)	35133)	188.56)	996)	1610)	to 177.24)	47867)	78051)	to 198.66)	

Abbreviations: GBD=Global Burden of Disease. SDI=Socio-demographic Index.
 UI=uncertainty interval.

Supplementary Table 2 Prevalent cases, deaths and disability adjusted life years (DALYs) for inflammatory bowel disease (IBD) by 204 countries or territories in 2019 and 2019, and their percentage change from 1990 to 2019

Characteristics	Prevalent cases			Deaths			DALYs		
	1990 No. (95%UI)	2019 No. (95%UI)	Percentage change (%) (95%UI)	1990 No. (95%UI)	2019 No. (95%UI)	Percentage change (%) (95%UI)	1990 No. (95%UI)	2019 No. (95%UI)	Percentage change (%) (95%UI)
Afghanistan	1738 (1410 to 2120)	5699 (4548 to 7113)	228.01 (200.09 to 258.61)	31 (14 to 55)	58 (31 to 89)	88.34 (29.82 to 190.04)	1237 (627 to 2377)	3017 (1879 to 4660)	143.91 (72.00 to 244.29)
Albania	3324 (2792 to 3928)	3896 (3286 to 4630)	17.22 (7.74 to 27.7)	50 (21 to 65)	13 (9 to 19)	-74.70 (-84.65 to -32.21)	3904 (1399 to 5200)	991 (727 to 1300)	-74.62 (-83.28 to -33.39)
Algeria	5982 (5169 to 6928)	16875 (13593 to 20871)	182.11 (149.55 to 221.44)	28 (18 to 44)	53 (38 to 70)	90.14 (11.64 to 209.90)	1826 (1320 to 2675)	4021 (2997 to 5295)	120.18 (51.51 to 190.24)
American Samoa	2 (2 to 3)	3 (3 to 4)	48.88 (37.37 to 61.93)	0 (0 to 1)	0 (0 to 0)	-37.72 (-65.35 to 47.30)	15 (9 to 21)	8 (5 to 14)	-47.39 (-70.61 to 25.25)
Andorra	69 (58 to 81)	133 (111 to 159)	93.79 (79.63 to 110.16)	0 (0 to 0)	1 (1 to 2)	266.11 (124.63 to 467.38)	17 (13 to 23)	36 (26 to 47)	111.42 (66.64 to 167.41)
Angola	460 (373 to 573)	1648 (1338 to 2017)	258.10 (233.16 to 285.26)	37 (17 to 76)	78 (52 to 117)	112.25 (2.89 to 349.24)	1913 (713 to 4719)	3662 (2249 to 5786)	91.46 (-19.81 to 397.70)
Antigua and Barbuda	17 (14 to 20)	34 (28 to 41)	102.06 (85.45 to 119.33)	1 (0 to 1)	1 (0 to 1)	17.47 (-15.05 to 92.04)	18 (13 to 20)	22 (18 to 28)	25.07 (-4.44 to 87.07)
Argentina	4828 (3926 to 5756)	7825 (6413 to 9484)	62.10 (49.74 to 73.10)	84 (74 to 93)	143 (124 to 169)	71.49 (45.04 to 102.47)	2981 (2577 to 3433)	4556 (3904 to 5373)	52.84 (34.77 to 71.30)
Armenia	2547 (2109 to 3013)	3263 (2744 to 3956)	28.11 (18.76 to 37.72)	7 (5 to 9)	11 (8 to 13)	51.30 (17.69 to 101.11)	637 (492 to 805)	764 (593 to 979)	19.86 (4.07 to 38.21)
Australia	18262 (15282 to 21523)	44624 (39169 to 50438)	144.35 (122.23 to 167.82)	97 (85 to 120)	369 (259 to 430)	279.18 (123.37 to 350.95)	4536 (3533 to 5743)	11569 (9111 to 14334)	155.05 (104.34 to 184.94)
Austria	25345 (22242 to 28177)	33080 (29600 to 37293)	30.52 (19.87 to 42.12)	99 (88 to 133)	101 (80 to 165)	2.52 (-14.48 to 30.58)	5699 (4484 to 7140)	6463 (4736 to 8366)	13.41 (1.99 to 27.18)
Azerbaijan	4623 (3817 to 5491)	9463 (7886 to 11458)	104.71 (89.06 to 120.81)	12 (9 to 15)	13 (10 to 18)	12.27 (-26.26 to 63.36)	1080 (815 to 1410)	1829 (1289 to 2470)	69.47 (44.70 to 98.86)
Bahamas	65 (55 to 77)	123 (102 to 152)	88.60 (70.75 to 107.18)	1 (1 to 1)	2 (1 to 2)	82.56 (39.32 to 142.99)	49 (41 to 57)	78 (63 to 98)	60.27 (27.44 to 102.98)
Bahrain	179 (152 to 212)	846 (688 to 1004)	373.26 (311.12 to 435.40)	0 (0 to 1)	1 (1 to 2)	178.61 (101.12 to 256.10)	44 (32 to 56)	167 (116 to 218)	283.01 (183.34 to 382.68)

	206)	1035)	(309.51 to 442.36)			(82.33 to 326.1)	57)	229)	(204.71 to 374.48)
Bangladesh	11786 (9494 to 14655)	33018 (26285 to 41258)	180.14 (157.01 to 203.31)	544 (333 to 805)	713 (431 to 1068)	30.90 (-18.82 to 117.77)	23781 (13440 to 35324)	26354 (17363 to 37248)	10.82 (-35.76 to 104.55)
Barbados	183 (153 to 218)	282 (238 to 340)	54.27 (41.76 to 69.09)	1 (1 to 1)	2 (1 to 2)	48.15 (12.33 to 96.63)	58 (47 to 71)	81 (62 to 101)	39.17 (18.58 to 61.35)
Belarus	9910 (8453 to 11723)	11335 (9509 to 13529)	14.38 (6.51 to 23.58)	45 (32 to 60)	58 (42 to 77)	29.88 (-8.49 to 97.40)	2690 (2011 to 3484)	3063 (2364 to 3923)	13.87 (-6.13 to 41.64)
Belgium	9661 (8871 to 10430)	20093 (17518 to 22821)	107.97 (87.58 to 131.05)	113 (99 to 134)	273 (206 to 319)	141.39 (64.63 to 188.06)	3307 (2755 to 3921)	6370 (5236 to 7678)	92.63 (55.31 to 116.01)
Belize	26 (22 to 32)	87 (71 to 106)	230.96 (204.21 to 258.71)	1 (1 to 1)	2 (1 to 2)	117.53 (55.55 to 286.06)	40 (29 to 50)	77 (64 to 97)	91.51 (43.10 to 212.80)
Benin	209 (171 to 253)	685 (549 to 838)	227.98 (203.9 to 255.4)	14 (6 to 24)	30 (18 to 44)	116.13 (28.68 to 334.23)	694 (232 to 1320)	1437 (773 to 2281)	107.25 (11.24 to 374.73)
Bermuda	23 (19 to 28)	33 (27 to 39)	42.79 (30.81 to 55.62)	1 (0 to 1)	0 (0 to 1)	-15.72 (-38.69 to 37.20)	18 (14 to 21)	14 (11 to 18)	-22.33 (-40.21 to 11.58)
Bhutan	66 (52 to 83)	158 (128 to 197)	140.27 (120.87 to 162.46)	2 (1 to 4)	3 (2 to 7)	57.00 (-6.75 to 195.84)	86 (38 to 160)	102 (67 to 202)	18.91 (-35.13 to 133.49)
Bolivia (Plurinational State of)	569 (473 to 694)	1400 (1171 to 1693)	145.90 (129.42 to 165.45)	25 (10 to 48)	34 (26 to 45)	39.57 (-28.99 to 217.03)	1552 (546 to 3375)	1348 (986 to 1772)	-13.09 (-59.56 to 134.61)
Bosnia and Herzegovina	4910 (4225 to 5717)	5387 (4726 to 6247)	9.73 (1.15 to 17.87)	18 (12 to 23)	26 (13 to 35)	40.25 (-11.49 to 108.03)	1285 (987 to 1644)	1372 (949 to 1778)	6.80 (-13.90 to 28.67)
Botswana	70 (58 to 86)	221 (179 to 276)	214.79 (189.25 to 244.24)	4 (3 to 6)	9 (6 to 13)	104.82 (14.62 to 221.73)	188 (121 to 269)	388 (241 to 620)	106.67 (18.10 to 226.68)
Brazil	73860 (64511 to 84264)	115697 (100339 to 132222)	56.64 (51.18 to 62.94)	451 (396 to 488)	1035 (939 to 1207)	129.44 (108.60 to 167.01)	27396 (23325 to 31992)	46350 (39647 to 54190)	69.18 (58.65 to 83.50)
Brunei Darussalam	126 (100 to 155)	295 (237 to 361)	134.79 (114.54 to 156.55)	1 (1 to 2)	3 (2 to 3)	127.20 (58.12 to 237.13)	57 (40 to 85)	114 (89 to 147)	99.44 (53.62 to 164.86)
Bulgaria	13507 (11443 to 15898)	11275 (9602 to 13477)	-16.53 (-23.08 to -9.27)	25 (22 to 32)	41 (32 to 51)	65.55 (22.25 to 118.70)	2779 (2081 to 3597)	2569 (1937 to 3319)	-7.55 (-19.78 to 6.98)
Burkina Faso	392 (318 to 485)	1098 (901 to 1347)	180.10 (158.26 to 201.94)	35 (16 to 58)	81 (41 to 129)	130.36 (25.65 to 235.07)	1781 (607 to 3594)	3942 (1729 to 7006)	121.28 (15.32 to 227.24)

			200.27)				350.02)		380.59)
Burundi	207 (169 to 255)	459 (369 to 561)	121.41 (105.47 to 137.36)	21 (13 to 37)	38 (24 to 58)	76.44 (-8.52 to 253.21)	1064 (461 to 2387)	1608 (1001 to 2527)	51.13 (-33.49 to 272.32)
Cabo Verde	23 (19 to 28)	63 (51 to 78)	176.77 (156.29 to 198.45)	1 (0 to 1)	1 (1 to 1)	37.26 (-16.62 to 131.63)	34 (21 to 47)	43 (35 to 54)	28.23 (-15.29 to 118.40)
Cambodia	218 (168 to 273)	595 (467 to 730)	172.54 (148.48 to 197.52)	26 (14 to 39)	38 (26 to 48)	46.42 (-4.73 to 167.94)	1175 (547 to 2166)	1222 (890 to 1546)	3.97 (-44.25 to 128.29)
Cameroon	538 (438 to 666)	1938 (1576 to 2393)	259.93 (232.74 to 288.04)	30 (14 to 46)	58 (30 to 95)	95.05 (-1.81 to 218.33)	1367 (583 to 2134)	2830 (1520 to 4639)	107.06 (11.41 to 245.01)
Canada	116922 (112352 to 121655)	157737 (142113 to 173888)	34.91 (23.15 to 47.18)	270 (241 to 302)	403 (323 to 605)	49.15 (24.68 to 106.93)	22694 (17260 to 29101)	29915 (21904 to 38441)	31.82 (19.21 to 46.22)
Central African Republic	116 (95 to 145)	243 (199 to 299)	109.71 (91.54 to 126.84)	12 (7 to 19)	21 (12 to 35)	80.23 (18.71 to 166.11)	510 (273 to 935)	890 (475 to 1568)	74.48 (9.24 to 167.75)
Chad	251 (205 to 306)	713 (580 to 881)	184.44 (162.13 to 208.28)	21 (10 to 35)	44 (25 to 64)	108.90 (42.17 to 222.10)	960 (360 to 1689)	2084 (1020 to 3460)	117.09 (31.20 to 260.72)
Chile	3739 (3165 to 4369)	6732 (5813 to 7788)	80.06 (68.43 to 93.27)	46 (36 to 51)	70 (59 to 89)	53.60 (25.60 to 123.36)	1928 (1573 to 2244)	2612 (2169 to 3169)	35.45 (14.76 to 72.90)
China	239473 (198363 to 285024)	911045 (776347 to 1069533)	280.44 (262.77 to 303.34)	5560 (4048 to 7203)	4676 (3774 to 5461)	-15.89 (-39.57 to 19.52)	234245 (162916 to 293663)	232464 (179903 to 291090)	-0.76 (-26.71 to 54.23)
Colombia	6732 (5626 to 7997)	15348 (13025 to 18234)	127.99 (113.25 to 144.58)	56 (48 to 61)	154 (116 to 202)	175.73 (106.78 to 258.47)	3215 (2689 to 3798)	6419 (4991 to 7986)	99.66 (64.35 to 143.95)
Comoros	21 (17 to 26)	48 (39 to 60)	123.01 (106.31 to 142.32)	2 (1 to 3)	4 (2 to 6)	81.66 (13.33 to 277.77)	77 (29 to 137)	119 (75 to 174)	54.58 (-16.19 to 298.98)
Congo	145 (120 to 178)	421 (343 to 518)	189.59 (170.45 to 215.68)	9 (6 to 14)	17 (12 to 25)	87.61 (15.68 to 196.61)	396 (237 to 645)	681 (463 to 980)	72.21 (-4.05 to 195.14)
Cook Islands	1 (1 to 1)	1 (1 to 2)	28.57 (18.27 to 40.87)	0 (0 to 0)	0 (0 to 0)	-14.75 (-42.49 to 32.51)	8 (5 to 11)	5 (3 to 7)	-33.66 (-57.85 to 4.48)
Costa Rica	670 (560 to 796)	1637 (1380 to 1937)	144.55 (127.55 to 162.48)	3 (2 to 3)	10 (7 to 13)	270.81 (169.90 to 398.49)	190 (150 to 238)	524 (399 to 669)	176.16 (128 to 235.84)
Côte d'Ivoire	578 (465 to 714)	1562 (1251 to 1950)	170.18 (151.08 to 189.28)	25 (11 to 42)	54 (32 to 79)	111.95 (32.09 to 191.81)	1324 (535 to 2260)	2583 (1501 to 3952)	95.11 (14.75 to 276.09)

			190.01)			290.61)			
Croatia	9449 (8823 to 10129)	10780 (9980 to 11592)	14.09 (9.79 to 18.67)	16 (14 to 24)	33 (25 to 42)	106.49 (18.11 to 180.74)	1866 (1411 to 2410)	2288 (1717 to 2898)	22.61 (2.99 to 39.06)
Cuba	3240 (2702 to 3901)	4574 (3750 to 5525)	41.18 (29.72 to 54.70)	36 (23 to 43)	42 (33 to 53)	16.33 (-11.71 to 79.06)	1518 (1151 to 1818)	1682 (1335 to 2085)	10.76 (-8.18 to 38.33)
Cyprus	344 (292 to 400)	962 (870 to 1050)	179.86 (151.26 to 216.30)	12 (7 to 16)	16 (12 to 20)	35.72 (-8.18 to 121.22)	257 (180 to 333)	370 (303 to 444)	43.92 (7.35 to 105.55)
Czechia	10218 (8616 to 12269)	20802 (19084 to 22519)	103.57 (74.68 to 138.01)	71 (64 to 82)	114 (87 to 141)	59.45 (13.25 to 100.62)	3246 (2697 to 3932)	5259 (4127 to 6597)	62.01 (34.95 to 90.03)
Democratic People's Republic of Korea	3097 (2554 to 3714)	4965 (4120 to 5978)	60.33 (48.19 to 72.89)	74 (41 to 114)	108 (75 to 147)	45.76 (-9.28 to 166.1)	3363 (1697 to 6033)	3161 (2323 to 4117)	-5.99 (-46.37 to 81.39)
Democratic Republic of the Congo	1975 (1605 to 2418)	4445 (3597 to 5502)	125.06 (107.08 to 145.69)	130 (79 to 207)	231 (159 to 336)	77.23 (4.65 to 194.58)	6456 (3284 to 12595)	10018 (6738 to 15367)	55.18 (-21.39 to 209.02)
Denmark	13729 (12468 to 15154)	15310 (13920 to 16882)	11.51 (5.37 to 17.43)	43 (38 to 50)	70 (60 to 83)	65.35 (42.63 to 92.58)	2893 (2227 to 3654)	3391 (2644 to 4239)	17.21 (8.04 to 27.16)
Djibouti	20 (16 to 25)	90 (72 to 111)	342.41 (307.26 to 378.51)	1 (1 to 2)	3 (2 to 5)	190.20 (72.46 to 408.23)	60 (27 to 121)	144 (88 to 236)	138.93 (25.91 to 367.14)
Dominica	19 (16 to 23)	22 (18 to 27)	17.43 (7.09 to 28.52)	1 (1 to 1)	1 (0 to 1)	-9.08 (-35.39 to 27.05)	23 (19 to 28)	21 (16 to 27)	-11.16 (-34.54 to 19.86)
Dominican Republic	1239 (1022 to 1507)	2521 (2070 to 3084)	103.40 (87.28 to 121.86)	11 (9 to 16)	22 (16 to 30)	99.41 (29.65 to 202.38)	732 (527 to 1060)	1109 (821 to 1450)	51.44 (0.42 to 118.17)
Ecuador	1159 (1021 to 1302)	3315 (2981 to 3667)	186.04 (172.00 to 200.27)	16 (12 to 21)	34 (24 to 44)	107.95 (37.86 to 223.02)	982 (705 to 1302)	1475 (1120 to 1823)	50.25 (3.59 to 124.68)
Egypt	17107 (14592 to 19726)	39271 (31782 to 48388)	129.56 (97.49 to 159.21)	59 (35 to 119)	119 (70 to 186)	100.85 (5.49 to 238.69)	4521 (3160 to 6354)	9453 (6709 to 12613)	109.10 (57.59 to 171.14)
El Salvador	842 (701 to 998)	1478 (1239 to 1741)	75.42 (62.88 to 87.97)	13 (8 to 16)	9 (7 to 12)	-28.67 (-54.13 to 18.21)	661 (461 to 881)	437 (329 to 574)	-33.83 (-55.24 to -1.58)
Equatorial Guinea	19 (16 to 24)	95 (79 to 117)	397.19 (353.40 to 443.01)	2 (1 to 3)	3 (2 to 4)	66.29 (-6.86 to 195.01)	73 (37 to 135)	119 (73 to 184)	63.28 (-22.44 to 233.97)

Eritrea	114 (93 to 141)	327 (263 to 398)	186.49 (164.83 to 210.17)	9 (4 to 17)	23 (15 to 34)	165.47 (22.99 to 516.12)	474 (168 to 1107)	1017 (645 to 1643)	114.61 (-12.62 to 493.09)
Estonia	1311 (1148 to 1494)	1821 (1593 to 2066)	38.90 (26.62 to 51.17)	10 (9 to 12)	9 (6 to 11)	-17.88 (-40.41 to 15.88)	511 (425 to 601)	448 (341 to 573)	-12.32 (-28.71 to 9.89)
Eswatini	38 (31 to 47)	80 (65 to 98)	109.48 (95.32 to 125.52)	2 (1 to 3)	4 (2 to 5)	72.30 (1.22 to 254.21)	106 (47 to 206)	153 (101 to 227)	44.21 (-27.03 to 242.69)
Ethiopia	1763 (1447 to 2135)	4457 (3634 to 5454)	152.76 (143.58 to 162.31)	219 (128 to 398)	325 (197 to 489)	48.24 (-33.27 to 200.06)	11296 (4911 to 25054)	12866 (8426 to 19913)	13.90 (-51.97 to 197.17)
Fiji	28 (23 to 34)	42 (35 to 52)	50.29 (36.12 to 66.63)	1 (1 to 2)	2 (1 to 2)	27.79 (-16.31 to 91.11)	59 (45 to 80)	68 (49 to 91)	14.67 (-24.77 to 72.54)
Finland	9450 (8777 to 10150)	19960 (17972 to 22078)	111.22 (94.08 to 127.73)	33 (24 to 39)	39 (33 to 46)	18.82 (-5.40 to 68.55)	2012 (1537 to 2571)	3465 (2517 to 4569)	72.24 (51.93 to 93.91)
France	60982 (55563 to 66348)	101092 (91225 to 111418)	65.77 (54.06 to 77.24)	943 (807 to 1043)	2181 (1253 to 2615)	131.25 (51.63 to 168.76)	23073 (19741 to 26699)	40856 (30081 to 48291)	77.07 (34.58 to 97.82)
Gabon	65 (54 to 80)	163 (134 to 201)	150.81 (132.67 to 173.19)	4 (2 to 6)	5 (4 to 8)	52.52 (-4.74 to 134.04)	144 (85 to 223)	205 (137 to 294)	42.02 (-13.99 to 140.73)
Gambia	49 (39 to 60)	130 (105 to 161)	162.91 (142.17 to 186.15)	3 (1 to 5)	5 (3 to 7)	85.18 (3.78 to 214.51)	132 (63 to 243)	215 (140 to 298)	62.69 (-6.86 to 192.83)
Georgia	5100 (4308 to 6037)	4210 (3545 to 5060)	-17.45 (-22.85 to -11.71)	16 (10 to 22)	17 (10 to 22)	3.41 (-22.82 to 40.33)	1222 (911 to 1581)	991 (741 to 1269)	-18.96 (-30.33 to -5.81)
Germany	101153 (87240 to 117946)	236048 (208508 to 266966)	133.36 (115.87 to 150.36)	1201 (987 to 2011)	4286 (3156 to 4903)	256.72 (63.30 to 351.66)	37493 (30500 to 51704)	92002 (74718 to 107721)	145.38 (51.12 to 187.04)
Ghana	982 (800 to 1189)	2894 (2355 to 3533)	194.61 (176.45 to 216.26)	56 (24 to 95)	103 (57 to 155)	84.24 (5.66 to 242.87)	2633 (1097 to 4201)	4506 (2554 to 6654)	71.16 (2.12 to 227.26)
Greece	12180 (10236 to 14240)	10403 (9422 to 11537)	-14.59 (-23.98 to -3.38)	35 (30 to 40)	66 (54 to 80)	86.77 (51.57 to 131.14)	2407 (1790 to 3170)	2424 (1911 to 3027)	0.69 (-13.02 to 15.85)
Greenland	78 (64 to 92)	108 (92 to 125)	39.24 (25.78 to 55.52)	0 (0 to 0)	0 (0 to 1)	147.84 (18.45 to 275.98)	17 (13 to 23)	25 (19 to 33)	49.12 (13.65 to 82.39)
Grenada	16 (13 to 19)	28 (23 to 35)	76.27 (60.87 to 93.49)	1 (1 to 1)	1 (1 to 2)	29.20 (-4.73 to 79.53)	33 (27 to 39)	43 (36 to 52)	30.86 (1.58 to 68.87)

						21.60			
Guam	8 (6 to 9)	12 (10 to 14)	49.19 (36.21 to 64.35)	0 (0 to 0)	0 (0 to 0)	(-20.17 to 84.57)	9 (7 to 12)	9 (7 to 13)	2.91 (-31.52 to 53.3)
Guatemala	1041 (867 to 1243)	3192 (2680 to 3791)	206.76 (185.26 to 227.66)	13 (8 to 22)	35 (27 to 45)	180.16 (34.43 to 377.94)	866 (522 to 1506)	1761 (1381 to 2210)	103.35 (6.31 to 246.71)
Guinea	309 (251 to 384)	677 (543 to 826)	119.23 (103.12 to 138.21)	19 (6 to 34)	29 (14 to 46)	49.62 (-7.31 to 159.78)	1008 (272 to 2032)	1414 (609 to 2445)	40.38 (-20.12 to 170.29)
Guinea-Bissau	44 (36 to 54)	103 (83 to 126)	134.63 (116.21 to 153.25)	4 (2 to 7)	6 (3 to 8)	39.91 (-18.84 to 175.43)	201 (66 to 403)	265 (152 to 392)	31.85 (-30.36 to 186.15)
Guyana	126 (103 to 152)	170 (139 to 210)	35.00 (24.45 to 45.80)	5 (4 to 6)	6 (5 to 9)	20.04 (-18.42 to 74.53)	239 (189 to 291)	257 (191 to 336)	7.22 (-25.07 to 53.03)
Haiti	860 (708 to 1057)	1916 (1570 to 2384)	122.68 (105.23 to 142.3)	58 (24 to 105)	85 (45 to 125)	45.78 (-11 to 148.4)	3030 (946 to 6879)	3782 (1875 to 6104)	24.85 (-33.53 to 156.75)
Honduras	619 (513 to 734)	1803 (1499 to 2141)	191.20 (171.74 to 211.20)	22 (14 to 31)	50 (31 to 69)	128.99 (47.94 to 251.69)	1240 (712 to 1929)	1816 (1191 to 2508)	46.37 (-11.95 to 139.27)
Hungary	24215 (21977 to 26809)	42233 (39099 to 45377)	74.41 (64.26 to 86.04)	84 (76 to 109)	100 (80 to 128)	19.27 (-4.55 to 45.83)	5849 (4647 to 7201)	8339 (6257 to 10544)	42.56 (25.99 to 56.19)
Iceland	357 (301 to 420)	872 (752 to 1007)	144.33 (123.25 to 167.58)	2 (2 to 2)	4 (3 to 5)	107.81 (52.43 to 151.5)	90 (71 to 113)	187 (142 to 239)	107.79 (81.26 to 131.98)
India	133927 (107800 to 166434)	270719 (219873 to 332264)	102.14 (95.94 to 110.29)	2770 (1783 to 3802)	4214 (2950 to 5531)	52.13 (19.29 to 98.65)	127568 (77798 to 169843)	164416 (117527 to 208276)	28.89 (1.40 to 72.21)
Indonesia	5025 (3974 to 6141)	11410 (9158 to 13704)	127.09 (115.15 to 141.04)	704 (401 to 910)	913 (582 to 1179)	29.58 (2.63 to 76.95)	26026 (16965 to 34445)	24943 (18268 to 32252)	-4.16 (-31.91 to 42.06)
Iran (Islamic Republic of)	14964 (12153 to 18513)	40493 (32952 to 49751)	170.60 (160.28 to 181.00)	51 (33 to 68)	132 (55 to 164)	158.02 (43.67 to 247.65)	4022 (3121 to 5103)	9481 (6679 to 12439)	135.71 (84.19 to 177.03)
Iraq	2270 (1890 to 2694)	10029 (8221 to 12199)	341.76 (303.6 to 377.49)	34 (21 to 51)	51 (38 to 67)	52.37 (-14.19 to 162.33)	2135 (1267 to 3447)	3719 (2808 to 4931)	74.13 (2.20 to 190.75)
Ireland	3253 (2736 to 3869)	5762 (4988 to 6655)	77.13 (58.69 to 97.43)	33 (29 to 37)	51 (41 to 65)	53.61 (25.28 to 93.62)	1106 (922 to 1332)	1623 (1294 to 2033)	46.76 (29.96 to 67.57)
Israel	3274 (2767 to 3882)	6640 (5924 to 7451)	102.78 (76.8 to 132.02)	22 (18 to 24)	46 (38 to 63)	111.01 (70.80 to 199.17)	1000 (812 to 1229)	1851 (1484 to 2306)	85.14 (61.05 to 116.46)

Italy	183929 (159353 to 209220)	186447 (165268 to 209019)	1.37 (-2.84 to 6.10)	351 (310 to 581)	1305 (944 to 1468)	272.23 (70.52 to 339.63)	33890 (24913 to 43884)	44427 (34629 to 54814)	31.09 (5.26 to 46.90)
Jamaica	543 (455 to 648)	884 (737 to 1059)	62.81 (49.97 to 76.46)	6 (4 to 7)	7 (5 to 10)	21.88 (-16.58 to 110.45)	304 (231 to 367)	343 (264 to 432)	12.67 (-13.90 to 66.78)
Japan	236120 (196281 to 281825)	408632 (353858 to 468152)	73.06 (59.11 to 88.73)	367 (270 to 394)	452 (350 to 629)	23.32 (1.39 to 112.57)	41769 (30062 to 56026)	67424 (46877 to 91495)	61.42 (48.32 to 75.54)
Jordan	1611 (1394 to 1851)	11508 (9646 to 13565)	614.12 (540.91 to 683.77)	6 (4 to 8)	13 (10 to 17)	135.70 (49.91 to 281.75)	452 (339 to 570)	2155 (1536 to 2953)	376.81 (274.79 to 495.45)
Kazakhstan	11689 (9797 to 14063)	15823 (13219 to 18930)	35.36 (26.10 to 46.10)	76 (56 to 95)	82 (66 to 100)	7.52 (-17.29 to 48.48)	4458 (3567 to 5515)	5172 (4164 to 6466)	16.03 (-1.28 to 37.13)
Kenya	868 (711 to 1056)	2870 (2364 to 3474)	230.72 (219.85 to 242.5)	74 (46 to 125)	180 (111 to 265)	144.03 (82.74 to 228.15)	3011 (1930 to 4593)	6453 (4376 to 9370)	114.3 (40.66 to 213.60)
Kiribati	2 (2 to 3)	4 (3 to 4)	60.33 (46.38 to 76.77)	1 (0 to 1)	1 (0 to 1)	5.25 (-33.24 to 73.45)	28 (11 to 58)	30 (14 to 55)	4.10 (-35.53 to 92.08)
Kuwait	863 (798 to 937)	2857 (2338 to 3483)	230.91 (174.37 to 298.63)	1 (1 to 2)	4 (3 to 5)	195.71 (125.48 to 314.39)	188 (140 to 241)	558 (391 to 755)	197.49 (143.44 to 262.68)
Kyrgyzstan	2526 (2126 to 3008)	4283 (3592 to 5083)	69.58 (59.46 to 81.49)	15 (10 to 19)	10 (8 to 12)	-36.11 (-51.26 to 14.99)	1109 (784 to 1376)	1031 (789 to 1325)	-7.05 (-27.91 to 29.99)
Lao People's Democratic Republic	90 (70 to 113)	241 (191 to 300)	167.27 (144.93 to 193.03)	10 (5 to 15)	11 (6 to 17)	8.81 (-34.31 to 91.32)	385 (177 to 639)	387 (234 to 610)	0.50 (-45.77 to 106.92)
Latvia	3273 (2810 to 3770)	3226 (2843 to 3623)	-1.44 (-8.09 to 5.70)	12 (10 to 14)	14 (11 to 17)	18.35 (-5.77 to 47.79)	811 (632 to 1017)	779 (605 to 981)	-4.01 (-15.43 to 8.10)
Lebanon	881 (721 to 1091)	2494 (2037 to 3050)	182.89 (160.10 to 205.97)	3 (2 to 4)	8 (4 to 12)	146.92 (25.25 to 359.10)	220 (161 to 297)	545 (394 to 737)	148.06 (90.21 to 219.00)
Lesotho	95 (78 to 115)	150 (122 to 185)	58.00 (46.76 to 69.06)	6 (4 to 8)	9 (6 to 12)	51.75 (-12.69 to 142.65)	222 (137 to 323)	326 (210 to 480)	46.51 (-15.14 to 129.83)
Liberia	104 (85 to 129)	288 (233 to 354)	176.51 (154.41 to 199.50)	7 (3 to 12)	11 (6 to 17)	46.34 (-18.23 to 235.23)	360 (108 to 705)	490 (271 to 833)	35.96 (-36.97 to 268.26)
Libya	629 (514 to 759)	1910 (1557 to 2333)	203.80 (175.90 to 233.83)	4 (3 to 7)	11 (7 to 15)	159.15 (33.45 to 345.08)	229 (166 to 324)	595 (436 to 782)	160.02 (65.02 to 262.55)

Lithuania	4535 (3980 to 5145)	4848 (4481 to 5210)	6.90 (-3.51 to 20.95)	14 (10 to 16)	18 (14 to 23)	26.29 (-2.24 to 67.72)	1054 (817 to 1321)	1105 (861 to 1375)	4.77 (-8.66 to 20.85)
Luxembourg	775 (680 to 879)	1503 (1318 to 1707)	93.98 (81.65 to 107.23)	5 (4 to 6)	11 (8 to 13)	124.41 (55.78 to 172.33)	202 (162 to 247)	376 (297 to 471)	85.81 (59.15 to 105.40)
Madagascar	490 (401 to 604)	1330 (1089 to 1651)	171.16 (153.22 to 190.88)	36 (17 to 60)	69 (48 to 103)	92.10 (5.72 to 331.04)	1875 (646 to 3722)	3000 (2035 to 4374)	60.01 (-23.07 to 329.63)
Malawi	336 (273 to 415)	741 (603 to 910)	120.33 (105.3 to 136.64)	39 (19 to 76)	55 (38 to 78)	39.48 (-33.91 to 218.89)	2236 (716 to 5491)	2323 (1541 to 3545)	3.89 (-57.34 to 225.03)
Malaysia	638 (533 to 747)	2165 (1879 to 2498)	239.19 (213.74 to 272.55)	16 (13 to 20)	41 (30 to 56)	157.56 (64.69 to 265.74)	612 (503 to 742)	1434 (1090 to 1814)	134.26 (68.55 to 208.48)
Maldives	6 (5 to 7)	27 (21 to 33)	357.26 (319.05 to 402.53)	0 (0 to 1)	1 (1 to 1)	97.39 (13.04 to 268.14)	19 (10 to 33)	29 (23 to 38)	58.10 (-20.10 to 218.81)
Mali	396 (321 to 489)	1033 (841 to 1256)	161.12 (141.84 to 182.05)	29 (9 to 53)	55 (26 to 93)	90.14 (10.52 to 338.68)	1569 (384 to 3318)	2748 (1107 to 5138)	75.21 (-6.44 to 320.25)
Malta	275 (237 to 318)	390 (346 to 441)	42.03 (32.40 to 52.30)	2 (2 to 2)	6 (5 to 7)	182.23 (117.73 to 248.53)	84 (68 to 102)	149 (123 to 178)	77.16 (51.73 to 106.18)
Marshall Islands	1 (1 to 1)	2 (2 to 3)	81.58 (65.63 to 99.90)	0 (0 to 0)	0 (0 to 0)	14.19 (-33.41 to 79.45)	10 (6 to 17)	12 (6 to 20)	15.49 (-36.36 to 90.92)
Mauritania	118 (96 to 144)	330 (270 to 405)	179.57 (158.4 to 202.27)	8 (4 to 11)	9 (6 to 13)	19.95 (-22.88 to 109.37)	322 (167 to 487)	376 (245 to 543)	16.93 (-28.24 to 120.07)
Mauritius	47 (37 to 58)	86 (69 to 102)	81.67 (65.36 to 99.25)	1 (1 to 1)	3 (3 to 4)	176.18 (101.94 to 258.21)	50 (43 to 61)	117 (90 to 147)	134.12 (70.2 to 198.45)
Mexico	25697 (21937 to 30082)	46570 (40040 to 53889)	81.22 (75.62 to 87.02)	157 (142 to 176)	519 (408 to 622)	229.87 (156.16 to 297.06)	9626 (8180 to 11411)	21132 (17386 to 25318)	119.55 (86.73 to 154.33)
Micronesia (Federated States of)	3 (2 to 4)	4 (3 to 5)	26.76 (16.02 to 38.96)	1 (0 to 1)	1 (0 to 1)	-23.01 (-59.09 to 31.38)	28 (16 to 49)	20 (10 to 38)	-27.22 (-62.97 to 22.93)
Monaco	43 (36 to 51)	59 (50 to 69)	37.31 (28.37 to 47.29)	0 (0 to 0)	0 (0 to 1)	37.96 (-4.38 to 94.10)	11 (8 to 14)	14 (11 to 18)	30.63 (10.51 to 53.62)
Mongolia	961 (801 to 1153)	2328 (1907 to 2810)	142.14 (124.80 to 161.08)	11 (6 to 15)	12 (9 to 16)	11.41 (-26.46 to 89.38)	690 (380 to 1073)	814 (620 to 1028)	17.92 (-26.45 to 100.76)
Montenegro	879 (744 to 1051)	1051 (890 to 1212)	19.54 (12.1 to 26.98)	2 (1 to 2)	3 (2 to 3)	48.81 (1.77 to 95.85)	191 (145 to 237)	221 (165 to 277)	15.74 (1.68 to 29.80)

	1032)	1240)	to 27.53)			to 101.73)	247)	288)	to 30.37)
Morocco	3007 (2487 to 3582)	6614 (5488 to 7909)	119.98 (105.44 to 135.91)	31 (19 to 48)	59 (41 to 77)	91.82 (30.18 to 192.53)	1438 (989 to 2101)	2615 (1988 to 3373)	81.81 (30.04 to 139.60)
Mozambique	487 (397 to 601)	1111 (897 to 1347)	128.31 (112.18 to 146.62)	52 (30 to 88)	107 (71 to 154)	107.07 (16.28 to 270.37)	2567 (1058 to 5668)	4503 (2907 to 7196)	75.44 (-18.50 to 319.21)
Myanmar	1024 (797 to 1272)	2062 (1656 to 2558)	101.31 (83.73 to 120.83)	60 (34 to 95)	59 (44 to 82)	-0.68 (-40.07 to 64.77)	2820 (1386 to 5128)	2258 (1680 to 3215)	-19.94 (-57.94 to 48.65)
Namibia	87 (72 to 108)	217 (175 to 268)	148.34 (130.13 to 167.81)	6 (4 to 8)	9 (6 to 13)	61.81 (0.64 to 190.79)	218 (129 to 344)	333 (223 to 498)	52.64 (-12.57 to 213.41)
Nauru	0 (0 to 0)	0 (0 to 0)	12.57 (3.45 to 21.62)	0 (0 to 0)	0 (0 to 0)	-34.79 (-63.12 to 6.11)	3 (1 to 6)	2 (1 to 4)	-34.16 (-60.95 to 18.41)
Nepal	2180 (1726 to 2758)	5036 (4049 to 6194)	131.04 (112.62 to 151.30)	93 (56 to 165)	115 (71 to 190)	23.09 (-15.11 to 93.10)	3780 (2183 to 5903)	3819 (2683 to 5781)	1.05 (-34.25 to 65.01)
Netherlands	24401 (22175 to 26704)	16251 (13975 to 18987)	-33.4 (-41.14 to -24.18)	278 (240 to 344)	782 (582 to 906)	180.66 (78.32 to 230.31)	8234 (6818 to 9979)	12100 (10246 to 13731)	46.95 (10.86 to 70.21)
New Zealand	5873 (5089 to 6670)	8600 (7850 to 9491)	46.45 (37.95 to 57.06)	20 (17 to 22)	31 (26 to 39)	58.14 (32.29 to 109.75)	1267 (976 to 1592)	1758 (1327 to 2254)	38.84 (26.73 to 54.82)
Nicaragua	500 (414 to 598)	1453 (1218 to 1720)	190.37 (167.53 to 212.17)	3 (2 to 3)	7 (6 to 9)	177.21 (99.51 to 267.74)	187 (149 to 245)	444 (340 to 555)	137.59 (85.21 to 192.36)
Niger	321 (256 to 395)	942 (760 to 1154)	193.63 (171.22 to 216.83)	27 (9 to 54)	55 (26 to 95)	106.00 (18.53 to 313.02)	1564 (379 to 3724)	2835 (1120 to 5521)	81.21 (-7.73 to 318.21)
Nigeria	5162 (4259 to 6269)	14578 (11955 to 17708)	182.41 (176.97 to 187.98)	314 (165 to 514)	560 (306 to 909)	78.53 (23.85 to 168.11)	15139 (7194 to 24017)	26794 (15017 to 42474)	76.98 (13.30 to 185.01)
Niue	0 (0 to 0)	0 (0 to 0)	-12.86 (-20.01 to -3.97)	0 (0 to 0)	0 (0 to 0)	-42.22 (-65.13 to -10.86)	1 (0 to 1)	0 (0 to 1)	-45.91 (-68.37 to -8.78)
North Macedonia	2473 (2098 to 2927)	3374 (2855 to 3973)	36.41 (27.51 to 46.86)	4 (3 to 4)	5 (3 to 6)	37.22 (1.2 to 83.42)	490 (358 to 648)	635 (459 to 844)	29.55 (14.26 to 46.45)
Northern Mariana Islands	3 (2 to 3)	3 (3 to 4)	17.67 (3.72 to 33.96)	0 (0 to 0)	0 (0 to 0)	-44.77 (-70.47 to 26.41)	12 (8 to 19)	5 (4 to 9)	-57.52 (-77.38 to -4.80)
Norway	20686 (17395 to 24323)	33097 (28492 to 37859)	60.00 (50.85 to 68.77)	29 (26 to 41)	38 (32 to 55)	30.65 (17.07 to 54.59)	3551 (2585 to 4687)	5414 (3835 to 7244)	52.44 (44.12 to 61.59)

Oman	431 (347 to 517)	1575 (1266 to 1924)	265.15 (237.03 to 297.09)	2 (1 to 3)	4 (3 to 5)	135.73 (37.95 to 331.56)	122 (85 to 178)	375 (271 to 496)	206.46 (111.98 to 320.55)
Pakistan	9984 (7995 to 12369)	26815 (21768 to 33849)	168.59 (154.72 to 184.98)	454 (240 to 866)	657 (447 to 993)	44.84 (-2.73 to 133.76)	16234 (9791 to 26748)	27286 (18727 to 38379)	68.08 (19.36 to 148.68)
Palau	1 (1 to 1)	1 (1 to 1)	58.71 (43.16 to 76.15)	0 (0 to 0)	0 (0 to 0)	23.28 (-26.34 to 101.05)	3 (2 to 7)	4 (2 to 6)	14.99 (-29.80 to 103.99)
Palestine	374 (305 to 450)	1351 (1104 to 1621)	261.47 (229.04 to 293.11)	3 (2 to 4)	4 (3 to 6)	49.80 (-14.64 to 127.75)	132 (92 to 195)	320 (235 to 443)	142.19 (82.43 to 220.08)
Panama	553 (471 to 638)	1338 (1131 to 1560)	141.92 (123.11 to 161.72)	7 (6 to 10)	25 (19 to 32)	239.99 (135.70 to 373.74)	436 (347 to 538)	1002 (763 to 1297)	129.97 (65.87 to 224.87)
Papua New Guinea	116 (92 to 140)	285 (229 to 350)	145.64 (124.56 to 168.38)	13 (7 to 20)	25 (16 to 38)	95.85 (20.41 to 222.69)	661 (335 to 1140)	1258 (758 to 2034)	90.40 (5.88 to 270.52)
Paraguay	996 (853 to 1165)	1956 (1652 to 2324)	96.35 (82.38 to 111.71)	4 (4 to 5)	12 (8 to 16)	171.03 (73.55 to 302.03)	327 (263 to 404)	647 (481 to 831)	97.76 (55.83 to 147.82)
Peru	2566 (2121 to 3079)	5665 (4638 to 6822)	120.79 (105.66 to 138.38)	128 (74 to 194)	76 (54 to 105)	-40.28 (-66.32 to 19.96)	8234 (3972 to 13912)	3118 (2308 to 4194)	-62.13 (-79.74 to -11.96)
Philippines	2067 (1630 to 2519)	5073 (4044 to 6166)	145.40 (135.48 to 156.45)	98 (54 to 125)	117 (95 to 155)	19.59 (-15.39 to 149.06)	3743 (2419 to 4551)	4556 (3797 to 5981)	21.71 (-7.83 to 121.46)
Poland	177477 (149170 to 211629)	88307 (77909 to 99826)	-50.24 (-54.72 to -45.27)	180 (168 to 211)	361 (281 to 426)	99.98 (43.08 to 136.68)	30297 (21831 to 40254)	20081 (15602 to 25064)	-33.72 (-41.18 to -24.23)
Portugal	6035 (5365 to 6750)	9894 (8866 to 11003)	63.94 (50.98 to 79.42)	81 (72 to 90)	306 (158 to 363)	277.16 (96.34 to 355.45)	2425 (2073 to 2832)	5332 (3507 to 6256)	119.87 (37.89 to 153.53)
Puerto Rico	1123 (1058 to 1194)	1442 (1320 to 1565)	28.41 (21.63 to 35.32)	20 (15 to 22)	18 (13 to 28)	-9.54 (-38.39 to 73.14)	755 (589 to 869)	592 (456 to 801)	-21.63 (-40.46 to 23.39)
Qatar	154 (123 to 187)	1446 (1178 to 1746)	838.58 (770.76 to 916.51)	0 (0 to 1)	2 (1 to 3)	413.11 (169.07 to 853.64)	41 (29 to 57)	296 (205 to 412)	628.10 (423.39 to 857.49)
Republic of Korea	17167 (15174 to 19498)	46956 (44197 to 49997)	173.52 (147.67 to 206.09)	313 (143 to 399)	234 (183 to 313)	-25.35 (-46.63 to 58.97)	9498 (6903 to 11454)	10451 (7829 to 13343)	10.04 (-17.52 to 63.35)
Republic of Moldova	3098 (2561 to 3712)	3166 (2836 to 3521)	2.20 (-11.58 to 19.64)	17 (14 to 21)	18 (14 to 21)	4.75 (-16.20 to 31.59)	1046 (844 to 1266)	999 (820 to 1209)	-4.45 (-18.23 to 13.33)

									13.21)
	17947	17043	-5.04						-17.18
Romania	(15104 to 21254)	(15232 to 19020)	(-15.24 to 7.37)	64 (55 to 76)	74 (59 to 93)	15.86 (-8.37 to 45.57)	5269 (4206 to 6540)	4364 (3404 to 5459)	(-29.98 to -2.13)
Russian Federation	167371 (141580 to 195591)	170565 (145182 to 199143)	1.91 (-0.13 to 4.04)	977 (726 to 1128)	1257 (1021 to 1464)	28.65 (6.46 to 62.61)	53401 (41640 to 64977)	56533 (46127 to 69324)	5.86 (-5.94 to 23.29)
Rwanda	288 (237 to 355)	726 (584 to 888)	152.30 (132.10 to 172.65)	34 (20 to 59)	42 (27 to 62)	21.96 (-36.82 to 143.44)	1761 (735 to 3717)	1838 (1153 to 3012)	4.34 (-55.16 to 173.20)
Saint Kitts and Nevis	10 (8 to 12)	21 (17 to 26)	106.61 (90.32 to 126.13)	1 (1 to 1)	1 (1 to 1)	9.71 (-25.03 to 72.10)	25 (19 to 29)	28 (19 to 41)	14.61 (-24.18 to 78.38)
Saint Lucia	25 (21 to 31)	59 (48 to 72)	131.09 (113.96 to 149.59)	1 (1 to 1)	1 (1 to 2)	47.65 (10.86 to 116.72)	36 (29 to 41)	45 (36 to 56)	26.50 (-1.54 to 79.21)
Saint Vincent and the Grenadines	20 (16 to 24)	32 (26 to 39)	63.64 (48.19 to 80.82)	1 (1 to 1)	2 (1 to 2)	54.50 (13.27 to 112.91)	39 (32 to 45)	49 (40 to 62)	27.47 (-3.02 to 72.66)
Samoa	6 (5 to 8)	9 (7 to 10)	34.52 (23.82 to 45.98)	1 (1 to 1)	1 (1 to 1)	6.37 (-33.37 to 64.06)	31 (20 to 46)	30 (19 to 45)	-1.06 (-42.04 to 65.39)
San Marino	29 (25 to 35)	48 (41 to 57)	65.44 (55.11 to 76.39)	0 (0 to 0)	0 (0 to 0)	167.91 (65.76 to 328.84)	6 (4 to 8)	10 (8 to 14)	74.92 (47.44 to 111.54)
Sao Tome and Principe	8 (6 to 10)	18 (15 to 23)	135.19 (118.79 to 152.91)	0 (0 to 1)	0 (0 to 1)	3.87 (-41.14 to 89.85)	15 (8 to 24)	16 (11 to 24)	4.71 (-42.23 to 108.14)
Saudi Arabia	3748 (3112 to 4462)	13816 (11338 to 16751)	268.63 (237.42 to 301.72)	12 (7 to 20)	27 (18 to 38)	131.24 (9.23 to 337.69)	1012 (729 to 1405)	3181 (2284 to 4376)	214.41 (119.36 to 315.14)
Senegal	366 (298 to 449)	930 (756 to 1164)	153.93 (136.66 to 171.52)	23 (10 to 37)	37 (22 to 57)	61.95 (2.65 to 184.83)	1084 (420 to 1912)	1527 (911 to 2378)	40.90 (-20.02 to 185.33)
Serbia	12769 (10737 to 14873)	16638 (14322 to 19211)	30.30 (20.12 to 43.95)	49 (37 to 78)	113 (74 to 147)	128.93 (9.06 to 259.34)	3314 (2528 to 4479)	4741 (3595 to 5996)	43.04 (-2.81 to 78.90)
Seychelles	3 (2 to 4)	6 (5 to 8)	117.31 (99.80 to 136.88)	0 (0 to 0)	0 (0 to 0)	28.62 (-7.02 to 75.47)	5 (4 to 7)	7 (5 to 9)	31.52 (-0.75 to 71.15)
Sierra Leone	181 (149 to 220)	467 (379 to 582)	158.32 (138.65 to 178.83)	11 (4 to 19)	20 (10 to 32)	87.02 (3.04 to 331.6)	554 (164 to 1133)	981 (457 to 1656)	76.91 (-7.60 to 330.39)
Singapore	1615 (1305 to 1925)	3179 (2593 to 3765)	96.84 (78.98 to 114.70)	4 (3 to 4)	5 (4 to 8)	39.94 (6.12 to 63.76)	375 (279 to 471)	612 (427 to 797)	63.29 (34.14 to 92.44)

	to 1934)	to 3962)	to 116.81)			to 150.34)	490)	838)	to 100.87)
Slovakia	9361 (8373 to 10336)	10674 (9737 to 11684)	14.02 (8.30 to 20.14)	31 (25 to 48)	58 (41 to 76)	88.23 (-3.03 to 176.55)	2274 (1743 to 2989)	2856 (2175 to 3557)	25.60 (-5.11 to 53.77)
Slovenia	3775 (3318 to 4289)	4739 (4282 to 5219)	25.55 (17.98 to 33.07)	10 (8 to 13)	18 (13 to 25)	86.00 (28.56 to 165.93)	781 (579 to 1011)	977 (726 to 1253)	25.10 (7.66 to 43.50)
Solomon Islands	8 (6 to 9)	17 (13 to 21)	124.02 (102.93 to 148.4)	1 (1 to 2)	2 (1 to 3)	64.34 (-3.76 to 176.72)	53 (24 to 101)	86 (48 to 156)	63.24 (-5.21 to 190.03)
Somalia	237 (190 to 293)	630 (502 to 786)	165.38 (145.60 to 187.38)	19 (7 to 40)	40 (21 to 71)	109.57 (26.24 to 263.84)	1021 (282 to 2543)	1986 (928 to 3988)	94.57 (2.46 to 316.32)
South Africa	2945 (2438 to 3586)	6542 (5423 to 7934)	122.12 (114.01 to 131.25)	98 (69 to 123)	166 (124 to 196)	69.87 (20.49 to 168.66)	4862 (3068 to 7236)	6143 (4966 to 7083)	26.34 (-18.56 to 117.23)
South Sudan	249 (202 to 307)	469 (383 to 576)	88.39 (73.80 to 103.53)	22 (9 to 43)	29 (16 to 61)	29.68 (-39.27 to 148.37)	1158 (325 to 2801)	1315 (637 to 2625)	13.58 (-53.56 to 178.43)
Spain	39276 (37463 to 41127)	77822 (74030 to 81685)	98.14 (91.73 to 104.75)	278 (237 to 304)	377 (303 to 600)	35.79 (8.43 to 121.33)	11347 (9316 to 13673)	17466 (13535 to 22106)	53.93 (36.17 to 79.47)
Sri Lanka	909 (734 to 1119)	2295 (2003 to 2637)	152.54 (124.22 to 186.13)	19 (14 to 24)	21 (15 to 30)	13.97 (-25.92 to 74.18)	813 (609 to 1032)	895 (684 to 1147)	10.11 (-20.92 to 51.47)
Sudan	3315 (2684 to 4060)	9292 (7568 to 11371)	180.28 (157.81 to 205.52)	21 (10 to 44)	48 (28 to 78)	123.91 (3.53 to 380.84)	1310 (720 to 2866)	3003 (2102 to 4130)	129.31 (11.1 to 282.19)
Suriname	79 (66 to 96)	158 (129 to 194)	98.73 (81.35 to 117.62)	3 (2 to 3)	4 (3 to 5)	32.93 (-4.19 to 91.78)	118 (85 to 146)	138 (109 to 175)	16.97 (-14.68 to 66.50)
Sweden	30612 (26350 to 35136)	40244 (34733 to 46000)	31.46 (23.94 to 40.19)	107 (86 to 119)	95 (77 to 139)	-11.38 (-27.36 to 46.41)	6158 (4631 to 7936)	7117 (5148 to 9548)	15.58 (4.65 to 28.78)
Switzerland	10695 (9668 to 11813)	14969 (13688 to 16325)	39.96 (33.88 to 46.34)	73 (58 to 83)	123 (97 to 160)	69.01 (36.46 to 128.96)	2817 (2268 to 3429)	3807 (2979 to 4738)	35.16 (21.15 to 56.09)
Syrian Arab Republic	2248 (1819 to 2734)	4862 (3940 to 5871)	116.26 (97.13 to 135.91)	23 (13 to 35)	37 (20 to 52)	57.25 (-10.52 to 184.61)	1091 (741 to 1432)	1653 (1195 to 2195)	51.58 (7.71 to 137.88)
Taiwan (Province of China)	2221 (1923 to 2557)	9064 (8139 to 10153)	308.12 (279.81 to 342.19)	101 (67 to 113)	199 (152 to 264)	97.46 (44.81 to 288.02)	2623 (1919 to 2947)	4338 (3499 to 5416)	65.37 (31.64 to 167.25)
Tajikistan	2391 (1972 to 2877)	5519 (4623 to 6632)	130.78 (115.02 to 148.48)	21 (11 to 34)	18 (13 to 26)	-11.19 (-54.29 to 82.80)	1691 (853 to 2831)	1646 (1219 to 2185)	-2.66 (-48.60 to 91.67)

Thailand	1734 (1327 to 2180)	3808 (3078 to 4630)	119.65 (96.59 to 151.17)	72 (52 to 95)	111 (80 to 149)	54.05 (-3.23 to 138.51)	2899 (2029 to 3946)	3272 (2453 to 4259)	12.87 (-26.29 to 71.96)
Timor-Leste	18 (14 to 23)	41 (33 to 50)	122.2 (104.08 to 146.48)	1 (1 to 3)	3 (2 to 5)	107.01 (24.75 to 246.34)	59 (29 to 102)	86 (48 to 138)	47.21 (-28.05 to 185.55)
Togo	190 (155 to 232)	514 (418 to 634)	170.07 (148.46 to 196.29)	9 (4 to 14)	21 (14 to 30)	142.31 (33.33 to 393.01)	457 (182 to 773)	940 (589 to 1321)	105.73 (15.73 to 366.27)
Tokelau	0 (0 to 0)	0 (0 to 0)	17.45 (9.66 to 26.52)	0 (0 to 0)	0 (0 to 0)	-38.14 (-61.51 to -1.52)	0 (0 to 1)	0 (0 to 0)	-39.66 (-63.93 to 8.06)
Tonga	4 (3 to 5)	4 (4 to 5)	14.32 (5.18 to 25.01)	1 (0 to 1)	1 (0 to 1)	0.57 (-36.36 to 55.61)	21 (14 to 30)	19 (13 to 27)	-11.27 (-43.54 to 36.78)
Trinidad and Tobago	275 (226 to 333)	476 (395 to 586)	73.31 (60.64 to 88.40)	3 (2 to 4)	5 (4 to 7)	67.08 (17.69 to 135.28)	143 (110 to 169)	215 (162 to 279)	49.93 (17.59 to 92.29)
Tunisia	2247 (1845 to 2720)	5382 (4413 to 6568)	139.49 (122.55 to 159.3)	7 (5 to 11)	16 (11 to 23)	124.51 (18.63 to 312.49)	569 (405 to 784)	1215 (890 to 1622)	113.58 (59.27 to 174.73)
Turkey	24930 (21910 to 28012)	93902 (80596 to 107925)	276.67 (231.04 to 325.07)	261 (159 to 401)	329 (250 to 471)	26.21 (-22.73 to 118.88)	13910 (9268 to 19352)	22488 (17253 to 28896)	61.67 (9.74 to 147.01)
Turkmenistan	1758 (1463 to 2085)	3806 (3155 to 4551)	116.48 (102.66 to 132.01)	10 (7 to 13)	14 (9 to 20)	45.23 (9.53 to 98.88)	765 (493 to 1049)	1120 (805 to 1438)	46.38 (13.41 to 91.33)
Tuvalu	0 (0 to 0)	0 (0 to 1)	27.01 (14.84 to 39.84)	0 (0 to 0)	0 (0 to 0)	-5.17 (-39.67 to 57.04)	3 (1 to 5)	2 (1 to 4)	-16.57 (-50.42 to 58.50)
Uganda	569 (462 to 701)	1697 (1381 to 2111)	198.27 (178.98 to 220.89)	48 (30 to 75)	102 (70 to 150)	114.15 (26.45 to 252.91)	2257 (1132 to 4612)	4600 (3084 to 7058)	103.84 (-2.52 to 318.38)
Ukraine	44470 (37197 to 53622)	42711 (36101 to 51042)	-3.95 (-10.23 to 3.42)	230 (174 to 306)	260 (210 to 315)	12.61 (-17.79 to 52.12)	13419 (10673 to 16857)	14197 (11469 to 17211)	5.80 (-13.37 to 26.77)
United Arab Emirates	595 (477 to 725)	5742 (4546 to 7126)	864.58 (768.02 to 978.3)	1 (1 to 3)	13 (7 to 22)	939.61 (312.54 to 2260.01)	144 (93 to 219)	1401 (971 to 1965)	871.11 (531.13 to 1256.31)
United Kingdom	150003 (132531 to 168508)	194529 (173985 to 215870)	29.68 (26.73 to 33.13)	856 (756 to 1056)	1793 (1533 to 1999)	109.50 (62.60 to 132.89)	37500 (30121 to 46024)	55171 (45323 to 66217)	47.12 (29.39 to 55.47)
United Republic of Tanzania	1121 (914 to 1369)	2891 (2330 to 3566)	157.88 (138.98 to 177.80)	86 (53 to 152)	181 (115 to 259)	111.26 (24.98 to 260.69)	4655 (2090 to 9955)	8565 (4988 to 14089)	83.97 (-7.81 to 290.41)

United States of America	982982 (846833 to 1129783)	762890 (712357 to 813654)	-22.39 (-29.48 to -14.49)	2171 (1940 to 2662)	5910 (4622 to 6464)	172.17 (80.73 to 199.18)	186357 (137531 to 243644)	215289 (175991 to 256059)	15.53 (-1.97 to 33.87)
United States Virgin Islands	32 (27 to 39)	47 (39 to 58)	46.61 (32.66 to 61.87)	1 (0 to 1)	1 (1 to 1)	11.78 (-24.49 to 72.41)	26 (19 to 32)	23 (18 to 29)	-9.33 (-33.27 to 25.88)
Uruguay	586 (485 to 711)	685 (564 to 830)	16.85 (7.20 to 26.83)	10 (9 to 14)	22 (19 to 26)	123.02 (68.94 to 165.97)	339 (290 to 426)	572 (496 to 648)	68.83 (35.57 to 94.94)
Uzbekistan	10505 (8847 to 12563)	23340 (19452 to 27952)	122.19 (107.43 to 140.58)	48 (31 to 59)	73 (58 to 93)	51.36 (12.53 to 153.54)	4299 (3006 to 5336)	6869 (5391 to 8500)	59.77 (27.87 to 109.54)
Vanuatu	4 (3 to 5)	9 (7 to 11)	115.45 (98.23 to 135.09)	1 (0 to 1)	2 (1 to 2)	77.85 (12.27 to 189.96)	33 (17 to 55)	57 (33 to 92)	71.58 (-1.00 to 187.82)
Venezuela (Bolivarian Republic of)	3817 (3268 to 4388)	8787 (7406 to 10382)	130.21 (113.08 to 147.54)	28 (19 to 32)	44 (31 to 59)	58.23 (11.55 to 165.19)	1676 (1316 to 1993)	2642 (2032 to 3372)	57.61 (25.64 to 101.69)
Viet Nam	4754 (3636 to 5967)	20278 (16050 to 25063)	326.50 (284.54 to 376.20)	221 (120 to 327)	177 (119 to 247)	-19.57 (-57.9 to 40.02)	6650 (4129 to 8928)	7419 (5510 to 9604)	11.56 (-26.71 to 73.67)
Yemen	1826 (1464 to 2237)	6284 (5044 to 7734)	244.20 (216.72 to 270.66)	14 (8 to 25)	44 (30 to 68)	217.58 (89.82 to 463.74)	772 (495 to 1411)	2423 (1790 to 3248)	213.69 (96.39 to 365.86)
Zambia	291 (236 to 350)	971 (790 to 1210)	233.83 (206.24 to 265.39)	35 (18 to 64)	55 (38 to 76)	57.07 (-21.84 to 226.50)	1941 (679 to 4527)	2548 (1621 to 3800)	31.27 (-46.88 to 283.23)
Zimbabwe	524 (430 to 644)	931 (757 to 1165)	77.84 (65.57 to 91.40)	22 (16 to 31)	43 (25 to 65)	98.08 (13.90 to 202.61)	1018 (652 to 1728)	1888 (1075 to 2968)	85.39 (11.43 to 204.97)

Abbreviations: UI=uncertainty interval.

Supplementary Table 3 Age-standardised prevalence, death and DALY rates for inflammatory bowel disease (IBD) by 204 countries or territories in 1990 and 2019, and their temporal trends from 1990 to 2019

Characteristics	Age-standardised prevalence rate			Age-standardized death rate			Age-standardized DALY rate		
	per 100,000 population			per 100,000 population			per 100,000 population		
	1990 No. (95%UI)	2019 No. (95%UI)	EAPC No. (95%CI)	1990 No. (95%UI)	2019 No. (95%UI)	EAPC No. (95%CI)	1990 No. (95%UI)	2019 No. (95%UI)	EAPC No. (95%CI)
Afghanistan	21.95 (17.75 to 26.86)	23.69 (19.05 to 29.24)	0.57 (0.40 to 0.74)	0.44 (0.22 to 0.78)	0.43 (0.26 to 0.64)	0.01 (-0.06 to 0.08)	15.26 (8.26 to 26.64)	14.58 (9.58 to 20.47)	0.03 (-0.06 to 0.12)
Albania	119.15 (100.27 to 140.7)	116.19 (97.53 to 136.91)	0.01 (-0.06 to 0.09)	1.65 (0.90 to 2.05)	0.41 (0.27 to 0.61)	-5.17 (-6.14 to -4.19)	110.06 (47.30 to 143.55)	36.18 (25.65 to 49.28)	-4.07 (-5.01 to -3.12)
Algeria	34.69 (30.01 to 40.15)	39.54 (32.16 to 48.88)	0.68 (0.53 to 0.83)	0.25 (0.17 to 0.37)	0.17 (0.13 to 0.23)	-1.14 (-1.23 to -1.04)	11.17 (8.26 to 15.40)	9.93 (7.45 to 12.97)	-0.28 (-0.38 to -0.17)
American Samoa	6.24 (5.14 to 7.41)	6.14 (5.03 to 7.38)	-0.22 (-0.35 to -0.09)	1.54 (0.89 to 2.28)	0.53 (0.37 to 0.90)	-4.40 (-4.80 to -4.01)	44.49 (26.51 to 63.51)	15.67 (10.89 to 28.11)	-4.23 (-4.59 to -3.86)
Andorra	108.82 (91.32 to 128.78)	112.31 (94.3 to 132.64)	0.17 (0.11 to 0.22)	0.70 (0.49 to 1.00)	0.69 (0.41 to 1.01)	0.03 (-0.06 to 0.13)	29.98 (22.66 to 38.91)	29.68 (20.92 to 39.03)	0.02 (-0.03 to 0.07)
Angola	7.20 (5.93 to 9.02)	8.85 (7.31 to 10.88)	0.59 (0.48 to 0.71)	0.73 (0.43 to 1.16)	0.62 (0.45 to 0.89)	-0.60 (-0.66 to -0.54)	23.37 (11.91 to 42.94)	18.19 (12.6 to 26.15)	-0.89 (-0.95 to -0.83)
Antigua and Barbuda	31.33 (26.25 to 37.78)	31.79 (26.42 to 38.6)	0.10 (0.04 to 0.16)	0.95 (0.70 to 1.12)	0.67 (0.53 to 0.91)	-1.77 (-2.08 to -1.46)	31.60 (24.03 to 36.76)	22.35 (17.9 to 28.99)	-1.66 (-1.90 to -1.42)
Argentina	15.07 (12.24 to 17.99)	15.98 (13.09 to 19.42)	0.21 (0.19 to 0.23)	0.27 (0.24 to 0.30)	0.27 (0.23 to 0.31)	-0.10 (-0.25 to 0.04)	9.25 (8.00 to 10.66)	9.02 (7.72 to 10.63)	-0.13 (-0.22 to -0.05)
Armenia	81.15 (67.51 to 95.76)	86.67 (72.86 to 104.56)	0.29 (0.26 to 0.32)	0.25 (0.19 to 0.30)	0.28 (0.21 to 0.34)	0.72 (0.36 to 1.09)	19.99 (15.55 to 25.21)	20.5 (15.81 to 26.35)	0.20 (0.05 to 0.36)
Australia	98.73 (82.47 to 116.23)	154.35 (134.91 to 175.51)	1.00 (0.72 to 1.27)	0.54 (0.47 to 0.66)	0.78 (0.56 to 0.91)	2.23 (1.81 to 2.66)	24.61 (19.22 to 31.12)	35.58 (27.28 to 45.33)	1.20 (0.98 to 1.41)
Austria	277.06 (243.01 to 307.67)	291.88 (260.14 to 327.43)	0.19 (-0.09 to 0.46)	0.87 (0.77 to 1.13)	0.52 (0.43 to 0.81)	-1.59 (-2.15 to -1.03)	61.71 (48.41 to 77.45)	54.31 (39.35 to 71.37)	-0.39 (-0.65 to -0.12)
Azerbaijan	76.23 (63.23 to 90.47)	81.93 (68.62 to 99.02)	0.35 (0.20 to 0.49)	0.22 (0.16 to 0.28)	0.16 (0.11 to 0.23)	-1.09 (-1.19 to -1.00)	17.65 (13.27 to 23.02)	16.2 (11.65 to 21.65)	-0.36 (-0.44 to -0.27)
Bahamas	32.77 (27.60 to 39.08)	28.72 (23.64 to 35.44)	-0.27 (-0.39 to -0.15)	0.59 (0.50 to 0.68)	0.49 (0.39 to 0.62)	-0.66 (-0.78 to -0.53)	23.15 (19.78 to 26.78)	19.04 (15.33 to 23.86)	-0.72 (-0.81 to -0.63)
Bahrain	42.17 (36.27 to 48.42)	44.05 (36.4 to 53.11)	0.35 (0.18 to 0.51)	0.26 (0.20 to 0.33)	0.17 (0.13 to 0.22)	-1.34 (-1.69 to -0.99)	11.98 (9.36 to 15.18)	10.05 (7.4 to 13.28)	-0.53 (-0.63 to -0.43)
Bangladesh	17.19 (13.90 to 21.66)	21.62 (17.31 to 27)	0.65 (0.53 to 0.77)	1.00 (0.64 to 1.64)	0.56 (0.35 to 0.83)	-2.14 (-2.39 to -1.89)	31.40 (20.47 to 45.16)	18.1 (12.11 to 25.27)	-2.03 (-2.15 to -1.92)
Barbados	70.62 (59.14 to 84.46)	69.57 (58.9 to 83.59)	0.04 (-0.02 to 0.09)	0.42 (0.36 to 0.48)	0.38 (0.30 to 0.48)	-0.41 (-0.57 to -0.25)	22.21 (18.13 to 27.15)	20.02 (15.56 to 25.32)	-0.42 (-0.48 to -0.36)
Belarus	82.25 (69.99 to 94.71)	87.85 (73.61 to 102.09)	0.38 (0.27 to 0.49)	0.36 (0.26 to 0.46)	0.38 (0.28 to 0.48)	0.24 (0.09 to 0.39)	22.33 (16.76 to 27.90)	23.25 (17.89 to 28.61)	0.17 (0.09 to 0.25)

	to 96.97)	to 104.11)	0.48)	0.48)	0.50)	0.39)	to 28.89)	to 29.87)	0.25)
Belgium	83.42 (76.75 to 90.48)	143.07 (123.44 to 164.68)	1.68 (1.42 to 1.94)	0.76 (0.67 to 0.90)	0.97 (0.76 to 1.12)	0.24 (-0.90 to 1.40)	25.98 (21.36 to 31.07)	36.56 (28.88 to 45.93)	0.82 (0.35 to 1.28)
Belize	22.80 (18.88 to 28.09)	24.31 (20.10 to 29.68)	0.35 (0.25 to 0.45)	0.70 (0.48 to 0.90)	0.61 (0.50 to 0.80)	-1.14 (-1.52 to -0.76)	26.21 (19.11 to 32.42)	21.80 (18.03 to 27.26)	-1.22 (-1.49 to -0.95)
Benin	7.48 (6.20 to 9.10)	8.88 (7.27 to 10.87)	0.58 (0.47 to 0.69)	0.48 (0.26 to 0.86)	0.45 (0.30 to 0.65)	-0.42 (-0.64 to -0.20)	17.20 (8.03 to 28.30)	15.67 (9.98 to 22.61)	-0.50 (-0.70 to -0.30)
Bermuda	34.26 (28.75 to 41.82)	34.27 (28.46 to 40.73)	0.17 (0.09 to 0.25)	0.89 (0.66 to 1.08)	0.36 (0.28 to 0.50)	-3.73 (-4.07 to -3.40)	28.26 (22.38 to 33.89)	14.3 (11.3 to 18.41)	-2.73 (-3.00 to -2.46)
Bhutan	16.74 (13.31 to 21.03)	22.23 (18.11 to 27.62)	1.24 (1.11 to 1.38)	0.68 (0.35 to 1.53)	0.55 (0.34 to 1.23)	-0.84 (-0.97 to -0.72)	21.23 (11.26 to 43.14)	15.82 (10.39 to 31.52)	-1.18 (-1.27 to -1.10)
Bolivia (Plurinational State of)	13.46 (11.31 to 16.36)	13.54 (11.36 to 16.33)	0.05 (0.00 to 0.10)	0.50 (0.27 to 0.79)	0.40 (0.30 to 0.52)	-0.83 (-0.91 to -0.75)	22.17 (10.30 to 41.41)	12.73 (9.53 to 16.38)	-2.04 (-2.15 to -1.94)
Bosnia and Herzegovina	102.41 (88.37 to 118.99)	122.38 (107.08 to 140.67)	0.58 (0.55 to 0.61)	0.46 (0.33 to 0.58)	0.45 (0.23 to 0.61)	-0.20 (-0.52 to 0.12)	27.68 (21.43 to 35.18)	29.74 (21.21 to 38.84)	0.14 (-0.01 to 0.28)
Botswana	8.58 (7.14 to 10.52)	10.89 (8.88 to 13.6)	0.60 (0.44 to 0.76)	0.70 (0.48 to 1.00)	0.64 (0.43 to 0.89)	-0.77 (-1.15 to -0.39)	20.94 (14.53 to 29.34)	20.3 (13.14 to 30.81)	-0.41 (-0.71 to -0.11)
Brazil	65.87 (57.91 to 74.92)	47.78 (41.6 to 54.51)	-0.87 (-1.09 to -0.65)	0.48 (0.42 to 0.52)	0.45 (0.41 to 0.52)	0.01 (-0.16 to 0.19)	23.70 (20.23 to 27.67)	19.51 (16.72 to 22.74)	-0.44 (-0.62 to -0.27)
Brunei Darussalam	53.76 (43.58 to 66.16)	57.28 (46.33 to 70.04)	0.25 (0.24 to 0.27)	1.52 (1.08 to 2.01)	1.48 (0.97 to 1.89)	0.09 (-0.02 to 0.20)	36.51 (27.84 to 47.59)	32.76 (26.62 to 39.71)	-0.25 (-0.33 to -0.18)
Bulgaria	127.47 (108.71 to 149.68)	120.16 (101.94 to 142.65)	-0.16 (-0.29 to -0.03)	0.26 (0.23 to 0.31)	0.33 (0.25 to 0.41)	1.13 (0.73 to 1.54)	28.31 (21.41 to 36.54)	27.62 (20.56 to 35.57)	0.00 (-0.21 to 0.21)
Burkina Faso	6.79 (5.57 to 8.47)	7.81 (6.46 to 9.56)	0.59 (0.41 to 0.77)	0.61 (0.37 to 0.89)	0.67 (0.38 to 1.00)	0.56 (0.28 to 0.85)	21.41 (10.66 to 33.67)	22.52 (12.05 to 34.80)	0.38 (0.15 to 0.62)
Burundi	6.12 (5.03 to 7.50)	6.13 (5.06 to 7.50)	-0.09 (-0.19 to 0.01)	0.69 (0.45 to 1.02)	0.73 (0.46 to 1.16)	0.15 (-0.07 to 0.37)	22.15 (14.22 to 36.56)	20.85 (13.56 to 32.18)	-0.20 (-0.42 to 0.03)
Cabo Verde	10.12 (8.33 to 12.38)	12.18 (9.88 to 14.93)	0.76 (0.65 to 0.88)	0.33 (0.20 to 0.46)	0.25 (0.19 to 0.33)	-2.05 (-2.56 to -1.54)	12.86 (8.37 to 17.33)	8.69 (6.98 to 10.77)	-2.12 (-2.50 to -1.74)
Cambodia	3.02 (2.34 to 3.74)	3.77 (3.01 to 4.61)	0.65 (0.57 to 0.72)	0.50 (0.27 to 0.71)	0.35 (0.23 to 0.45)	-1.44 (-1.54 to -1.34)	14.51 (8.27 to 21.45)	8.98 (6.42 to 11.33)	-1.86 (-1.96 to -1.77)
Cameroon	8.34 (6.88 to 10.38)	10.13 (8.33 to 12.46)	0.79 (0.68 to 0.90)	0.54 (0.29 to 0.88)	0.38 (0.21 to 0.59)	-1.69 (-1.94 to -1.43)	18.12 (9.17 to 27.57)	13.36 (7.77 to 21.03)	-1.43 (-1.66 to -1.20)
Canada	382.53 (367.54 to 397.57)	357.73 (323.05 to 393.88)	0.13 (-0.03 to 0.28)	0.87 (0.77 to 0.97)	0.56 (0.46 to 0.82)	-2.43 (-3.11 to -1.75)	74.34 (56.49 to 95.45)	64.91 (46.59 to 85.11)	-0.31 (-0.41 to -0.21)
Central African Republic	6.56 (5.39 to 8.20)	6.92 (5.75 to 8.49)	0.16 (0.14 to 0.18)	0.86 (0.55 to 1.38)	0.86 (0.53 to 1.36)	0.02 (-0.06 to 0.10)	26.29 (16.24 to 42.90)	25.47 (14.87 to 41.50)	-0.07 (-0.13 to 0.00)
Chad	6.92 (5.73 to 8.53)	8.10 (6.65 to 9.90)	0.68 (0.57 to 0.80)	0.58 (0.32 to 0.98)	0.58 (0.39 to 0.84)	-0.24 (-0.45 to -0.04)	20.08 (9.86 to 32.61)	19.16 (11.97 to 27.44)	-0.36 (-0.55 to -0.16)

Chile	30.30 (25.82 to 35.36)	31.66 (27.25 to 36.7)	0.29 (-0.09 to 0.67)	0.46 (0.37 to 0.51)	0.30 (0.26 to 0.38)	-1.75 (-2.10 to -1.40)	16.52 (13.59 to 19.03)	11.96 (9.91 to 14.48)	-1.10 (-1.28 to -0.91)
China	22.85 (18.98 to 27.15)	47.06 (40.05 to 54.99)	2.80 (2.41 to 3.19)	0.86 (0.59 to 1.16)	0.30 (0.24 to 0.35)	-4.11 (-4.50 to -3.71)	24.47 (17.88 to 30.19)	13.1 (10.29 to 16.31)	-2.36 (-2.54 to -2.18)
Colombia	29.55 (24.81 to 34.95)	29.36 (24.89 to 34.88)	-0.04 (-0.07 to -0.01)	0.28 (0.25 to 0.31)	0.29 (0.22 to 0.38)	0.75 (0.38 to 1.12)	12.89 (10.91 to 15.21)	12.53 (9.75 to 15.57)	0.36 (0.12 to 0.60)
Comoros	7.33 (6.01 to 9.00)	7.78 (6.38 to 9.69)	0.36 (0.24 to 0.48)	0.83 (0.43 to 1.44)	0.75 (0.48 to 1.19)	-0.51 (-0.67 to -0.36)	23.44 (10.67 to 39.49)	20.58 (13.10 to 30.54)	-0.63 (-0.84 to -0.41)
Congo	9.67 (7.93 to 11.87)	10.38 (8.57 to 12.74)	0.30 (0.16 to 0.45)	0.79 (0.56 to 1.16)	0.66 (0.47 to 0.93)	-0.58 (-0.75 to -0.41)	23.58 (16.35 to 34.61)	18.36 (13.15 to 25.90)	-0.82 (-0.99 to -0.66)
Cook Islands	6.37 (5.18 to 7.65)	6.17 (5.09 to 7.51)	-0.21 (-0.35 to -0.06)	1.64 (1.17 to 2.20)	0.81 (0.53 to 1.11)	-2.70 (-2.90 to -2.50)	50.74 (35.37 to 72.08)	24.94 (15.58 to 36.18)	-2.70 (-2.88 to -2.51)
Costa Rica	30.77 (25.88 to 36.60)	31.40 (26.47 to 37.15)	0.04 (0.03 to 0.05)	0.14 (0.12 to 0.16)	0.20 (0.14 to 0.26)	1.04 (0.82 to 1.26)	8.60 (6.81 to 10.81)	10.14 (7.74 to 12.91)	0.58 (0.47 to 0.69)
Côte d'Ivoire	8.08 (6.58 to 9.97)	8.70 (7.15 to 10.96)	0.43 (0.34 to 0.52)	0.46 (0.23 to 0.80)	0.40 (0.26 to 0.58)	-0.71 (-0.97 to -0.45)	15.45 (7.59 to 24.88)	13.59 (8.56 to 19.48)	-0.63 (-0.86 to -0.40)
Croatia	166.42 (155.48 to 178.41)	203.79 (188.71 to 220.14)	0.64 (0.57 to 0.70)	0.28 (0.24 to 0.42)	0.41 (0.30 to 0.52)	1.79 (1.42 to 2.17)	33.08 (24.90 to 42.82)	41.30 (30.43 to 53.17)	0.79 (0.65 to 0.93)
Cuba	30.31 (25.30 to 36.52)	29.25 (23.94 to 35.26)	-0.01 (-0.07 to 0.06)	0.35 (0.23 to 0.42)	0.23 (0.18 to 0.29)	-2.04 (-2.48 to -1.60)	14.22 (10.70 to 16.97)	10.45 (8.37 to 12.94)	-1.38 (-1.64 to -1.12)
Cyprus	42.09 (35.82 to 49.01)	58.44 (53.02 to 63.85)	0.98 (0.85 to 1.11)	2.09 (1.24 to 3.02)	1.00 (0.76 to 1.32)	-3.13 (-3.45 to -2.81)	36.43 (25.10 to 47.83)	22.06 (17.95 to 26.41)	-2.26 (-2.48 to -2.03)
Czechia	85.23 (71.89 to 102.44)	152.02 (139.69 to 164.49)	1.52 (1.33 to 1.71)	0.54 (0.49 to 0.63)	0.56 (0.42 to 0.69)	0.80 (0.45 to 1.15)	26.65 (21.98 to 32.43)	35.40 (27.15 to 44.74)	0.98 (0.90 to 1.06)
Democratic People's Republic of Korea	15.93 (13.23 to 19.03)	15.61 (12.96 to 18.71)	-0.13 (-0.21 to -0.06)	0.57 (0.33 to 0.82)	0.41 (0.28 to 0.59)	-1.10 (-1.20 to -1.00)	17.24 (9.70 to 27.63)	11.10 (8.17 to 14.58)	-1.31 (-1.41 to -1.21)
Democratic Republic of the Congo	8.50 (6.93 to 10.44)	7.80 (6.41 to 9.73)	-0.45 (-0.71 to -0.20)	0.71 (0.50 to 1.02)	0.57 (0.40 to 0.82)	-0.78 (-0.91 to -0.64)	21.69 (14.31 to 32.28)	17.22 (12.20 to 24.09)	-0.82 (-0.97 to -0.66)
Denmark	232.13 (210.74 to 255.89)	227.82 (208.42 to 250.75)	0.47 (0.29 to 0.65)	0.53 (0.48 to 0.62)	0.59 (0.50 to 0.68)	0.01 (-0.61 to 0.63)	46.68 (35.05 to 59.60)	45.17 (34.12 to 58.06)	0.13 (-0.02 to 0.29)
Djibouti	7.12 (5.93 to 8.73)	9.07 (7.45 to 11.07)	1.24 (1.04 to 1.45)	0.60 (0.37 to 1.07)	0.54 (0.36 to 0.89)	-0.56 (-0.67 to -0.45)	18.05 (10.87 to 32.37)	15.83 (10.31 to 24.84)	-0.67 (-0.82 to -0.53)
Dominica	29.23 (24.60 to 35.45)	27.29 (22.61 to 33.47)	-0.12 (-0.18 to -0.07)	1.01 (0.79 to 1.23)	0.76 (0.57 to 1.02)	-1.20 (-1.28 to -1.12)	34.22 (27.47 to 41.24)	26 (20.19 to 34.33)	-1.17 (-1.27 to -1.07)
Dominican Republic	25.16 (20.80 to 30.54)	24.19 (19.90 to 29.50)	0.16 (0.01 to 0.32)	0.24 (0.19 to 0.31)	0.24 (0.17 to 0.32)	0.09 (-0.13 to 0.32)	12.08 (9.46 to 15.94)	10.73 (7.96 to 13.99)	-0.27 (-0.50 to -0.04)
Ecuador	17.02 (15.04 to 19.21)	19.97 (17.98 to 22.11)	0.49 (0.39 to 0.59)	0.23 (0.18 to 0.31)	0.23 (0.17 to 0.30)	0.55 (-0.03 to 1.13)	10.90 (8.22 to 13.94)	9.02 (6.84 to 11.09)	-0.33 (-0.74 to 0.08)

Egypt	39.84 (33.94 to 46.00)	44.48 (36.34 to 55.00)	0.26 (0.20 to 0.32)	0.22 (0.13 to 0.47)	0.21 (0.12 to 0.35)	0.32 (0.07 to 0.56)	11.25 (7.91 to 16.51)	11.49 (8.21 to 15.51)	0.19 (0.10 to 0.27)
El Salvador	23.89 (19.87 to 28.45)	24.71 (20.64 to 29.14)	0.12 (0.05 to 0.19)	0.36 (0.23 to 0.45)	0.14 (0.11 to 0.20)	-3.87 (-4.22 to -3.52)	15.07 (11.16 to 18.78)	7.25 (5.45 to 9.54)	-2.87 (-3.18 to -2.56)
Equatorial Guinea	7.11 (5.84 to 8.80)	10.89 (9.04 to 13.36)	1.66 (1.48 to 1.85)	0.76 (0.44 to 1.28)	0.54 (0.33 to 0.86)	-1.45 (-1.60 to -1.30)	23.13 (13.07 to 37.98)	14.77 (9.26 to 22.66)	-1.89 (-2.04 to -1.73)
Eritrea	6.35 (5.28 to 7.85)	6.98 (5.79 to 8.43)	0.26 (0.21 to 0.32)	0.61 (0.39 to 0.96)	0.77 (0.52 to 1.12)	0.71 (0.52 to 0.89)	20.05 (11.19 to 34.57)	22.27 (15.26 to 32.30)	0.34 (0.20 to 0.49)
Estonia	71.59 (62.77 to 81.41)	103.71 (90.72 to 118.15)	1.12 (0.91 to 1.32)	0.55 (0.46 to 0.61)	0.34 (0.26 to 0.47)	-2.35 (-2.68 to -2.02)	28.55 (23.60 to 33.59)	24.50 (18.49 to 31.62)	-1.07 (-1.32 to -0.81)
Eswatini	8.30 (6.84 to 10.21)	9.49 (7.76 to 11.68)	0.49 (0.39 to 0.58)	0.55 (0.33 to 0.83)	0.60 (0.42 to 0.83)	0.53 (0.14 to 0.91)	17.33 (9.97 to 26.06)	17.93 (12.43 to 25.37)	0.38 (0.14 to 0.63)
Ethiopia	5.88 (4.90 to 7.15)	6.78 (5.64 to 8.29)	0.53 (0.48 to 0.59)	0.84 (0.59 to 1.34)	0.72 (0.42 to 1.07)	-0.67 (-0.82 to -0.52)	26.74 (17.05 to 45.16)	19.04 (11.93 to 28.10)	-1.33 (-1.48 to -1.18)
Fiji	4.78 (3.90 to 5.75)	4.70 (3.85 to 5.71)	-0.12 (-0.34 to 0.09)	0.35 (0.26 to 0.45)	0.26 (0.19 to 0.34)	-1.16 (-1.28 to -1.03)	10.67 (8.31 to 13.70)	8.17 (5.94 to 10.77)	-1.08 (-1.21 to -0.95)
Finland	162.00 (150.44 to 173.8)	286.76 (256.44 to 318.38)	1.86 (1.78 to 1.94)	0.47 (0.35 to 0.55)	0.29 (0.25 to 0.34)	-2.22 (-2.47 to -1.96)	33.34 (25.19 to 43.04)	47.57 (33.68 to 63.99)	1.06 (0.98 to 1.14)
France	96.03 (87.62 to 104.59)	136.71 (123.31 to 151.14)	1.43 (1.34 to 1.53)	1.08 (0.93 to 1.20)	1.21 (0.73 to 1.42)	0.74 (0.46 to 1.02)	31.92 (26.78 to 37.48)	39.44 (31.13 to 48.47)	1.07 (0.94 to 1.20)
Gabon	9.49 (7.90 to 11.62)	11.27 (9.27 to 13.92)	0.53 (0.51 to 0.56)	0.61 (0.41 to 0.96)	0.53 (0.38 to 0.76)	-0.49 (-0.70 to -0.28)	18.69 (12.11 to 28.60)	15.27 (10.62 to 21.51)	-0.71 (-0.88 to -0.54)
Gambia	8.70 (7.11 to 10.56)	8.81 (7.23 to 10.96)	-0.10 (-0.21 to 0.01)	0.58 (0.34 to 0.92)	0.44 (0.29 to 0.60)	-1.52 (-1.81 to -1.24)	19.12 (10.73 to 31.19)	14.25 (9.59 to 19.10)	-1.56 (-1.85 to -1.28)
Georgia	84.45 (71.53 to 99.72)	87.97 (73.75 to 104.83)	0.15 (0.08 to 0.22)	0.29 (0.18 to 0.39)	0.29 (0.19 to 0.37)	0.18 (-1.12 to 1.50)	20.37 (15.24 to 26.41)	20.25 (15.35 to 26.28)	0.02 (-0.38 to 0.41)
Germany	104.26 (89.74 to 121.91)	214.93 (188.62 to 243.64)	1.09 (0.54 to 1.64)	0.96 (0.79 to 1.60)	1.94 (1.46 to 2.20)	3.73 (3.26 to 4.20)	35.51 (28.44 to 47.28)	64.06 (51.49 to 77.71)	1.80 (1.57 to 2.02)
Ghana	10.54 (8.69 to 12.71)	12.26 (10.11 to 14.88)	0.73 (0.63 to 0.83)	0.70 (0.35 to 1.24)	0.55 (0.31 to 0.82)	-0.97 (-1.23 to -0.70)	24.11 (11.81 to 39.44)	18.5 (10.85 to 26.95)	-1.02 (-1.27 to -0.77)
Greece	97.92 (82.43 to 113.83)	78.66 (70.88 to 87.04)	-0.98 (-1.20 to -0.75)	0.26 (0.22 to 0.30)	0.23 (0.19 to 0.27)	-0.36 (-0.92 to 0.20)	19.2 (14.17 to 25.49)	15.88 (11.92 to 20.55)	-0.78 (-0.85 to -0.71)
Greenland	144.67 (122.01 to 170.01)	163.39 (138.74 to 188.49)	0.34 (0.27 to 0.40)	0.57 (0.45 to 0.71)	0.74 (0.38 to 0.96)	1.07 (0.80 to 1.34)	34.12 (26.01 to 44.17)	38.3 (28.36 to 50.15)	0.36 (0.24 to 0.47)
Grenada	24.13 (19.74 to 29.02)	24.31 (20.03 to 30.13)	0.03 (-0.05 to 0.12)	1.34 (1.06 to 1.62)	1.24 (1.03 to 1.52)	-0.55 (-0.68 to -0.41)	44.27 (36.58 to 52.74)	38.43 (32.58 to 46.61)	-0.64 (-0.73 to -0.56)
Guam	6.83 (5.65 to 8.11)	6.54 (5.35 to 7.82)	-0.18 (-0.35 to -0.01)	0.33 (0.26 to 0.42)	0.16 (0.12 to 0.23)	-3.00 (-3.55 to -2.45)	9.01 (7.19 to 11.32)	5.39 (4.11 to 7.68)	-2.12 (-2.65 to -1.59)
Guatemala	21.60 (18.10 to 25.10)	23.54 (19.84 to 27.24)	0.29 (0.25 to 0.33)	0.25 (0.18 to 0.32)	0.29 (0.22 to 0.36)	1.32 (0.72 to 1.92)	11.81 (8.36 to 15.26)	11.99 (9.52 to 14.46)	0.71 (0.18 to 1.24)

		to 26.13)	to 28.11)	0.32)	0.38)	0.37)	1.92)	to 18.2)	to 14.91)	1.24)
Guinea	7.53 (6.18 to 9.35)	8.61 (7.06 to 10.53)	0.61 (0.49 to 0.74)	0.43 (0.18 to 0.86)	0.40 (0.21 to 0.60)	-0.36 (-0.50 to -0.22)	16.9 (6.31 to 29.14)	14.41 (7.36 to 21.95)	-0.58 (-0.70 to -0.47)	
Guinea-Bissau	7.32 (5.99 to 9.06)	8.43 (6.92 to 10.32)	0.63 (0.50 to 0.76)	0.75 (0.36 to 1.18)	0.61 (0.4 to 0.85)	-0.81 (-0.93 to -0.68)	26.39 (11.34 to 44.49)	20.54 (12.76 to 28.9)	-0.94 (-1.07 to -0.80)	
Guyana	23.56 (19.43 to 28.53)	22.95 (18.93 to 28.26)	0.06 (-0.03 to 0.15)	1.19 (0.97 to 1.41)	1.02 (0.76 to 1.33)	-0.53 (-0.70 to -0.35)	40.69 (32.87 to 48.37)	35.43 (26.51 to 46.07)	-0.46 (-0.59 to -0.32)	
Haiti	20.11 (16.54 to 24.88)	19.43 (16.14 to 24.31)	0.07 (-0.03 to 0.17)	1.41 (0.74 to 2.12)	1.08 (0.61 to 1.59)	-0.77 (-0.89 to -0.65)	52.02 (22.41 to 92.43)	36.86 (19.94 to 54.22)	-0.94 (-1.12 to -0.77)	
Honduras	22.83 (18.97 to 27.11)	23.93 (19.84 to 28.49)	0.18 (0.14 to 0.23)	0.72 (0.46 to 0.99)	0.83 (0.51 to 1.15)	0.87 (0.73 to 1.02)	28.54 (19.06 to 38.67)	24.37 (15.88 to 32.67)	-0.38 (-0.43 to -0.32)	
Hungary	199.20 (181.71 to 219.68)	332.82 (309.79 to 356.72)	2.13 (1.78 to 2.48)	0.64 (0.58 to 0.82)	0.56 (0.45 to 0.71)	-0.62 (-1.04 to -0.20)	48.33 (38.31 to 59.55)	64.34 (47.69 to 82.55)	1.15 (0.85 to 1.46)	
Iceland	136.42 (115.41 to 161.21)	210.18 (180.43 to 243.51)	0.84 (0.59 to 1.09)	0.67 (0.57 to 0.78)	0.65 (0.51 to 0.75)	0.14 (-0.01 to 0.29)	33.49 (26.34 to 42.36)	42.38 (31.83 to 54.83)	0.47 (0.33 to 0.62)	
India	20.68 (16.76 to 25.67)	20.34 (16.57 to 24.97)	0.18 (-0.03 to 0.38)	0.63 (0.43 to 0.91)	0.40 (0.29 to 0.53)	-1.93 (-2.11 to -1.74)	20.11 (13.58 to 26.72)	13.04 (9.44 to 16.5)	-1.73 (-1.86 to -1.61)	
Indonesia	3.37 (2.70 to 4.07)	4.16 (3.37 to 5.00)	0.74 (0.60 to 0.88)	0.77 (0.37 to 1.04)	0.55 (0.33 to 0.70)	-1.42 (-1.56 to -1.29)	19.48 (11.70 to 24.6)	11.66 (8.16 to 14.98)	-2.04 (-2.17 to -1.91)	
Iran (Islamic Republic of)	41.07 (33.51 to 50.84)	44.80 (36.70 to 55.07)	0.29 (0.02 to 0.57)	0.22 (0.12 to 0.34)	0.19 (0.08 to 0.24)	-0.11 (-0.64 to 0.42)	11.09 (8.34 to 14.22)	11.03 (7.60 to 14.22)	0.12 (-0.02 to 0.25)	
Iraq	19.71 (16.52 to 23.39)	28.11 (23.22 to 34.20)	1.43 (1.27 to 1.59)	0.29 (0.20 to 0.42)	0.19 (0.15 to 0.27)	-1.58 (-1.76 to -1.39)	13.75 (9.61 to 19.18)	10.42 (8.08 to 13.32)	-0.96 (-1.14 to -0.78)	
Ireland	90.59 (75.89 to 107.72)	97.87 (84.83 to 112.53)	0.42 (0.35 to 0.49)	0.87 (0.76 to 0.96)	0.66 (0.53 to 0.84)	-1.61 (-2.56 to -0.66)	29.44 (24.40 to 35.63)	25.50 (20.1 to 32.09)	-0.80 (-1.30 to -0.30)	
Israel	70.49 (59.79 to 83.85)	70.21 (62.42 to 78.72)	-0.08 (-0.20 to 0.05)	0.47 (0.41 to 0.53)	0.38 (0.32 to 0.51)	-1.01 (-1.36 to -0.66)	21.15 (17.17 to 26.12)	18.50 (14.69 to 23.20)	-0.65 (-0.76 to -0.54)	
Italy	261.58 (226.94 to 297.14)	227.51 (200.83 to 254.27)	-0.24 (-0.43 to -0.05)	0.44 (0.39 to 0.70)	0.76 (0.55 to 0.85)	2.55 (2.03 to 3.06)	49.44 (36.73 to 63.71)	46.95 (35.41 to 59.78)	0.17 (0.00 to 0.34)	
Jamaica	29.63 (24.88 to 35.60)	29.42 (24.46 to 35.27)	0.15 (0.05 to 0.25)	0.30 (0.23 to 0.35)	0.24 (0.17 to 0.33)	-1.45 (-1.78 to -1.12)	14.86 (11.53 to 17.70)	11.50 (8.84 to 14.50)	-1.28 (-1.50 to -1.06)	
Japan	151.17 (125.74 to 179.69)	291.90 (251.75 to 336.57)	1.48 (1.08 to 1.88)	0.25 (0.18 to 0.27)	0.11 (0.09 to 0.16)	-2.39 (-2.83 to -1.95)	27.14 (19.46 to 36.26)	46.58 (31.41 to 63.54)	1.21 (0.88 to 1.54)	
Jordan	69.20 (60.07 to 79.85)	113.51 (95.78 to 133.87)	2.51 (2.23 to 2.79)	0.43 (0.30 to 0.59)	0.23 (0.18 to 0.30)	-2.62 (-2.98 to -2.26)	20.68 (15.47 to 26.15)	22.01 (16.06 to 29.65)	0.46 (0.34 to 0.58)	
Kazakhstan	80.02 (67.16 to 96.26)	81.77 (68.13 to 97.46)	0.12 (0.06 to 0.18)	0.57 (0.41 to 0.72)	0.46 (0.37 to 0.56)	-1.26 (-1.68 to -0.85)	30.23 (24.06 to 37.42)	26.97 (21.78 to 33.61)	-0.74 (-1.02 to -0.45)	
Kenya	6.80 (5.68 to 8.23)	8.33 (6.99 to 10.12)	0.31 (0.19 to 0.42)	0.81 (0.43 to 1.44)	0.84 (0.50 to 1.26)	0.31 (0.22 to 0.40)	21.25 (13.20 to 36.93)	21.31 (13.76 to 30.78)	0.26 (0.16 to 0.36)	

Kiribati	4.05 (3.25 to 4.96)	3.55 (2.90 to 4.32)	-0.69 (-0.88 to -0.51)	1.81 (0.99 to 2.71)	1.08 (0.68 to 1.67)	-2.13 (-2.29 to -1.98)	53.42 (24.47 to 92.59)	31.83 (17.58 to 55.40)	-2.07 (-2.20 to -1.93)
Kuwait	55.67 (51.70 to 60.02)	54.34 (45.07 to 65.64)	0.09 (-0.06 to 0.25)	0.19 (0.14 to 0.22)	0.15 (0.12 to 0.20)	-0.66 (-1.06 to -0.25)	13.39 (10.47 to 16.77)	11.73 (8.74 to 15.53)	-0.33 (-0.50 to -0.15)
Kyrgyzstan	73.48 (61.75 to 87.12)	73.31 (61.61 to 87.09)	-0.03 (-0.10 to 0.04)	0.42 (0.29 to 0.50)	0.19 (0.16 to 0.25)	-3.52 (-3.86 to -3.19)	28 (21.04 to 34.06)	17.37 (13.34 to 22.37)	-2.11 (-2.28 to -1.94)
Lao People's Democratic Republic	2.98 (2.32 to 3.69)	3.67 (2.95 to 4.55)	0.79 (0.74 to 0.83)	0.45 (0.22 to 0.72)	0.26 (0.14 to 0.41)	-2.40 (-2.60 to -2.19)	13.04 (6.62 to 19.19)	6.97 (4.13 to 11.24)	-2.47 (-2.65 to -2.30)
Latvia	103.47 (89.32 to 119.13)	123.78 (108.48 to 139.23)	0.42 (0.33 to 0.50)	0.34 (0.29 to 0.42)	0.37 (0.30 to 0.48)	0.22 (-0.08 to 0.51)	25.74 (20.10 to 32.35)	28.66 (21.84 to 36.61)	0.14 (-0.02 to 0.29)
Lebanon	33.16 (27.13 to 41.07)	46.20 (37.84 to 56.68)	1.23 (1.00 to 1.47)	0.14 (0.10 to 0.21)	0.15 (0.08 to 0.23)	0.32 (0.10 to 0.55)	8.48 (6.32 to 11.24)	10.18 (7.34 to 13.75)	0.79 (0.65 to 0.93)
Lesotho	7.67 (6.36 to 9.34)	8.77 (7.23 to 10.83)	0.48 (0.40 to 0.57)	0.55 (0.36 to 0.8)	0.69 (0.48 to 0.98)	1.08 (0.85 to 1.31)	16.56 (10.77 to 23.28)	20.29 (13.61 to 29.06)	1.06 (0.87 to 1.26)
Liberia	7.84 (6.42 to 9.75)	8.46 (6.99 to 10.34)	0.57 (0.33 to 0.80)	0.52 (0.23 to 0.92)	0.42 (0.26 to 0.62)	-0.84 (-1.09 to -0.60)	19.69 (7.54 to 32.92)	13.96 (8.48 to 21.59)	-1.16 (-1.44 to -0.88)
Libya	23.56 (19.39 to 28.73)	25.77 (21.21 to 31.41)	0.56 (0.29 to 0.84)	0.21 (0.13 to 0.37)	0.22 (0.15 to 0.31)	0.11 (-0.02 to 0.24)	8.88 (6.41 to 12.85)	9.05 (6.69 to 11.82)	0.21 (0.11 to 0.31)
Lithuania	109.21 (95.7 to 123.65)	133.41 (123.84 to 142.65)	0.84 (0.76 to 0.92)	0.32 (0.24 to 0.37)	0.33 (0.26 to 0.42)	0.13 (-0.20 to 0.47)	25.36 (19.61 to 31.92)	28.75 (21.98 to 36.27)	0.49 (0.33 to 0.65)
Luxembourg	166.34 (145.24 to 189.85)	187.63 (163.86 to 213.76)	0.37 (0.22 to 0.53)	0.96 (0.84 to 1.10)	0.97 (0.72 to 1.16)	0.55 (0.30 to 0.80)	42.53 (33.57 to 52.29)	43.90 (33.95 to 55.68)	0.27 (0.15 to 0.38)
Madagascar	6.62 (5.44 to 8.22)	7.25 (5.99 to 9.04)	0.38 (0.29 to 0.48)	0.53 (0.32 to 0.88)	0.59 (0.40 to 0.88)	0.45 (0.34 to 0.56)	17.91 (8.95 to 28.15)	16.98 (11.97 to 24.64)	-0.03 (-0.18 to 0.13)
Malawi	5.73 (4.70 to 7.05)	6.33 (5.28 to 7.8)	0.44 (0.40 to 0.48)	0.71 (0.49 to 1.02)	0.67 (0.46 to 0.97)	-0.26 (-0.39 to -0.12)	24.10 (13.49 to 42.83)	19.08 (13.47 to 26.73)	-0.85 (-1.02 to -0.69)
Malaysia	4.33 (3.64 to 5.05)	6.56 (5.71 to 7.56)	1.38 (1.19 to 1.57)	0.18 (0.14 to 0.22)	0.17 (0.12 to 0.23)	-0.75 (-1.06 to -0.43)	5.01 (4.15 to 6.10)	4.92 (3.71 to 6.26)	-0.54 (-0.73 to -0.35)
Maldives	4.10 (3.25 to 4.98)	4.94 (3.96 to 5.96)	0.74 (0.68 to 0.80)	0.53 (0.32 to 0.81)	0.30 (0.23 to 0.40)	-2.37 (-2.52 to -2.22)	13.21 (8.16 to 20.38)	7.20 (5.69 to 9.23)	-2.50 (-2.68 to -2.32)
Mali	7.19 (5.85 to 8.93)	8.08 (6.68 to 9.79)	0.63 (0.48 to 0.79)	0.49 (0.20 to 0.89)	0.47 (0.26 to 0.71)	-0.28 (-0.46 to -0.10)	19.25 (6.81 to 33.36)	16.53 (8.45 to 26.83)	-0.64 (-0.80 to -0.48)
Malta	66.69 (57.4 to 76.82)	72.00 (63.55 to 81.87)	0.11 (0.05 to 0.17)	0.54 (0.48 to 0.62)	0.62 (0.48 to 0.74)	0.78 (0.57 to 0.99)	20.61 (16.77 to 24.94)	22.28 (18.12 to 27.35)	0.40 (0.30 to 0.50)
Marshall Islands	4.22 (3.40 to 5.11)	4.10 (3.35 to 4.93)	-0.25 (-0.43 to -0.08)	1.32 (0.84 to 1.88)	0.83 (0.50 to 1.31)	-1.90 (-2.04 to -1.76)	38.63 (23.47 to 58.16)	24.94 (14.63 to 40.72)	-1.80 (-1.93 to -1.68)
Mauritania	8.95 (7.32 to 10.94)	11.87 (9.73 to 14.62)	0.85 (0.70 to 0.99)	0.68 (0.41 to 0.99)	0.41 (0.28 to 0.57)	-2.01 (-2.18 to -1.84)	22.06 (12.99 to 31.74)	13.42 (9.08 to 18.70)	-1.97 (-2.14 to -1.80)
Mauritius	4.55 (3.68 to 5.63)	5.50 (4.43 to 6.63)	0.68 (0.63 to 0.73)	0.17 (0.14 to 0.19)	0.22 (0.17 to 0.28)	1.44 (1.10 to 1.78)	5.3 (4.63 to 6.29)	7.7 (5.86 to 9.69)	1.88 (1.53 to 2.23)

Mexico	47.30 (40.55 to 55.27)	36.92 (31.76 to 42.73)	-0.82 (-0.97 to -0.67)	0.34 (0.31 to 0.39)	0.45 (0.36 to 0.54)	1.68 (1.33 to 2.02)	16.08 (13.61 to 19.12)	17.13 (14.12 to 20.45)	0.68 (0.41 to 0.96)
Micronesia (Federated States of)	4.44 (3.61 to 5.35)	4.11 (3.40 to 4.96)	-0.45 (-0.62 to -0.27)	1.36 (0.88 to 1.97)	0.80 (0.48 to 1.32)	-2.09 (-2.29 to -1.88)	40.59 (25.23 to 65.57)	23.88 (12.56 to 43.11)	-2.07 (-2.24 to -1.89)
Monaco	102.48 (86.41 to 120.82)	110.59 (93.15 to 130.73)	0.31 (0.29 to 0.33)	0.38 (0.27 to 0.50)	0.36 (0.27 to 0.47)	-0.07 (-0.15 to 0.01)	22.98 (17.18 to 30.02)	23.10 (17.08 to 29.93)	0.08 (0.06 to 0.10)
Mongolia	68.37 (56.95 to 82.11)	69.72 (57.44 to 83.84)	0.02 (0.01 to 0.04)	0.73 (0.47 to 1.01)	0.45 (0.33 to 0.61)	-2.10 (-2.26 to -1.94)	38.19 (25.22 to 51.55)	24.75 (19.13 to 31.11)	-1.88 (-2.00 to -1.75)
Montenegro	135.02 (114.64 to 158.46)	133.80 (112.95 to 156.37)	0.02 (0.00 to 0.05)	0.29 (0.23 to 0.37)	0.30 (0.23 to 0.37)	0.27 (0.08 to 0.46)	29.84 (22.66 to 38.5)	28.38 (20.94 to 37.02)	-0.08 (-0.14 to -0.02)
Morocco	15.56 (13.00 to 18.49)	17.60 (14.69 to 21.00)	0.60 (0.47 to 0.72)	0.23 (0.14 to 0.38)	0.21 (0.15 to 0.28)	-0.17 (-0.38 to 0.04)	8.23 (5.69 to 11.59)	7.60 (5.86 to 9.68)	-0.09 (-0.21 to 0.02)
Mozambique	5.71 (4.71 to 7.03)	6.30 (5.22 to 7.69)	0.38 (0.33 to 0.43)	0.69 (0.45 to 1.04)	0.84 (0.58 to 1.20)	0.94 (0.77 to 1.12)	22.30 (13.46 to 36.57)	24.35 (16.57 to 34.27)	0.62 (0.41 to 0.84)
Myanmar	3.09 (2.42 to 3.79)	3.71 (3.00 to 4.59)	0.72 (0.63 to 0.81)	0.22 (0.13 to 0.31)	0.13 (0.1 to 0.17)	-1.95 (-2.07 to -1.83)	7.97 (4.53 to 12.88)	4.34 (3.28 to 6.04)	-2.29 (-2.41 to -2.17)
Namibia	9.39 (7.72 to 11.59)	11.47 (9.48 to 14.12)	0.66 (0.54 to 0.77)	0.72 (0.50 to 1.00)	0.63 (0.45 to 0.87)	-0.61 (-0.80 to -0.41)	21.26 (13.8 to 28.84)	18.09 (12.71 to 26.34)	-0.52 (-0.63 to -0.41)
Nauru	5.33 (4.35 to 6.41)	5.02 (4.11 to 6.11)	-0.61 (-0.94 to -0.28)	1.37 (0.82 to 2.13)	0.92 (0.54 to 1.45)	-1.85 (-2.09 to -1.61)	42.03 (22.9 to 73.19)	27.18 (13.97 to 47.82)	-1.87 (-2.08 to -1.65)
Nepal	16.18 (12.92 to 20.54)	18.72 (15.04 to 23.18)	0.55 (0.50 to 0.59)	0.98 (0.57 to 1.86)	0.59 (0.36 to 0.98)	-1.88 (-2.06 to -1.69)	28.52 (18.28 to 47.84)	15.65 (10.93 to 23.88)	-2.15 (-2.36 to -1.94)
Netherlands	142.28 (129.20 to 155.78)	73.64 (63.08 to 85.72)	-2.19 (-2.78 to -1.60)	1.43 (1.24 to 1.75)	2.08 (1.58 to 2.40)	1.35 (0.87 to 1.84)	47.17 (39.07 to 56.59)	41.11 (35.20 to 47.09)	-0.50 (-0.93 to -0.06)
New Zealand	160.29 (139.19 to 182.59)	168.32 (152.62 to 186.95)	0.20 (0.15 to 0.26)	0.53 (0.45 to 0.59)	0.38 (0.32 to 0.46)	-1.70 (-2.05 to -1.34)	34.31 (26.39 to 43.21)	31.98 (23.24 to 41.73)	-0.32 (-0.42 to -0.22)
Nicaragua	23.25 (19.28 to 27.88)	26.41 (22.30 to 31.28)	0.20 (0.10 to 0.31)	0.15 (0.12 to 0.18)	0.17 (0.13 to 0.21)	0.48 (0.30 to 0.67)	7.80 (6.25 to 9.75)	8.26 (6.41 to 10.34)	0.12 (-0.02 to 0.25)
Niger	7.12 (5.75 to 8.74)	7.75 (6.26 to 9.48)	0.37 (0.26 to 0.48)	0.58 (0.28 to 0.99)	0.5 (0.29 to 0.79)	-0.71 (-0.92 to -0.51)	21.59 (8.82 to 38.22)	17.16 (9.15 to 26.85)	-1.08 (-1.30 to -0.86)
Nigeria	8.88 (7.36 to 10.86)	11.03 (9.13 to 13.41)	0.98 (0.83 to 1.14)	0.57 (0.28 to 0.97)	0.52 (0.28 to 0.83)	-0.11 (-0.21 to -0.02)	19.98 (11.19 to 32.55)	17.08 (10.24 to 26.72)	-0.43 (-0.51 to -0.35)
Niue	5.82 (4.77 to 7.03)	5.53 (4.56 to 6.74)	-0.24 (-0.39 to -0.08)	0.96 (0.67 to 1.38)	0.63 (0.38 to 0.91)	-1.75 (-1.86 to -1.63)	29.80 (19.61 to 46.61)	19.00 (10.29 to 29.66)	-1.92 (-2.07 to -1.78)
North Macedonia	119.00 (100.79 to 140.81)	122.13 (103.27 to 143.78)	0.14 (0.12 to 0.17)	0.20 (0.15 to 0.25)	0.18 (0.13 to 0.23)	-0.21 (-0.36 to -0.07)	23.91 (17.63 to 31.43)	23.32 (16.99 to 31.08)	0.00 (-0.04 to 0.05)
Northern Mariana	6.60 (5.47 to 7.98)	5.79 (4.80 to 6.96)	-0.61 (-0.80 to -0.42)	1.28 (0.85 to 1.82)	0.38 (0.26 to 0.73)	-4.76 (-5.32 to -4.19)	34.73 (23.54 to 50.03)	11.56 (7.82 to 20.63)	-4.28 (-4.78 to -3.78)

Islands	406.73	498.95								
Norway	(342.53 to 478.15)	(429.41 to 570.55)	0.38 (0.24 to 0.52)	0.43 (0.39 to 0.58)	0.38 (0.32 to 0.52)	-0.86 (-1.19 to -0.53)	69.15 (49.57 to 92.09)	80.37 (56.25 to 108.56)	0.17 (0.01 to 0.33)	
Oman	32.04 (26.30 to 38.55)	33.81 (27.79 to 40.80)	0.24 (0.08 to 0.40)	0.23 (0.12 to 0.39)	0.23 (0.15 to 0.34)	0.58 (0.34 to 0.82)	10.5 (7.14 to 15.11)	9.96 (7.66 to 12.72)	0.17 (0.00 to 0.35)	
Pakistan	13.75 (11.11 to 17.15)	16.77 (13.78 to 21.25)	0.77 (0.72 to 0.81)	0.78 (0.39 to 1.57)	0.62 (0.41 to 0.99)	-0.87 (-0.93 to -0.80)	21.52 (12.69 to 38.34)	17.80 (12.91 to 25.37)	-0.71 (-0.77 to -0.66)	
Palau	5.62 (4.60 to 6.79)	5.22 (4.30 to 6.32)	-0.40 (-0.56 to -0.24)	0.88 (0.53 to 1.46)	0.62 (0.29 to 0.97)	-1.36 (-1.47 to -1.24)	26.21 (13.51 to 47.84)	19.34 (8.32 to 32.27)	-1.21 (-1.31 to -1.10)	
Palestine	31.49 (25.86 to 38.19)	35.42 (29.15 to 42.61)	0.71 (0.52 to 0.90)	0.33 (0.23 to 0.50)	0.20 (0.15 to 0.29)	-2.83 (-3.48 to -2.18)	11.67 (8.60 to 16.06)	9.47 (7.18 to 12.75)	-1.16 (-1.42 to -0.90)	
Panama	30.64 (26.19 to 35.44)	31.9 (26.95 to 37.19)	0.09 (0.04 to 0.14)	0.40 (0.33 to 0.57)	0.59 (0.45 to 0.76)	2.20 (1.67 to 2.73)	19.61 (16.04 to 24.02)	24.28 (18.4 to 31.52)	1.57 (1.10 to 2.05)	
Papua New Guinea	4.05 (3.24 to 4.88)	3.65 (2.96 to 4.45)	-0.52 (-0.69 to -0.35)	0.54 (0.31 to 0.80)	0.42 (0.27 to 0.63)	-1.02 (-1.10 to -0.93)	19.34 (11.2 to 29.45)	14.68 (9.5 to 21.87)	-1.09 (-1.18 to -1.00)	
Paraguay	35.78 (30.69 to 41.49)	30.96 (26.24 to 36.59)	-0.62 (-0.73 to -0.50)	0.16 (0.13 to 0.21)	0.21 (0.15 to 0.28)	1.35 (1.08 to 1.63)	10.62 (8.39 to 13.36)	10.30 (7.70 to 13.16)	0.12 (-0.06 to 0.29)	
Peru	17.18 (14.20 to 20.56)	16.74 (13.74 to 20.14)	-0.14 (-0.17 to -0.10)	0.69 (0.47 to 0.93)	0.23 (0.16 to 0.32)	-4.20 (-4.68 to -3.72)	34.79 (19.65 to 53.77)	9.31 (6.89 to 12.58)	-5.08 (-5.69 to -4.47)	
Philippines	4.47 (3.59 to 5.38)	4.96 (4.02 to 6.00)	0.35 (0.25 to 0.46)	0.35 (0.16 to 0.46)	0.16 (0.13 to 0.20)	-3.25 (-3.54 to -2.95)	8.94 (5.36 to 11.07)	4.87 (4.06 to 6.26)	-2.61 (-2.86 to -2.35)	
Poland	418.60 (351.62 to 498.71)	177.25 (157.39 to 199.48)	-3.73 (-4.52 to -2.94)	0.44 (0.41 to 0.51)	0.53 (0.42 to 0.62)	0.82 (0.68 to 0.96)	72.05 (51.85 to 95.72)	38.44 (29.32 to 49.04)	-2.70 (-3.28 to -2.11)	
Portugal	52.37 (46.30 to 58.76)	74.24 (66.91 to 82.44)	0.72 (0.46 to 0.99)	0.69 (0.60 to 0.76)	1.06 (0.57 to 1.24)	2.38 (1.99 to 2.77)	20.51 (17.46 to 24.14)	27.82 (20.23 to 33.05)	1.24 (1.07 to 1.41)	
Puerto Rico	31.12 (29.32 to 33.10)	30.88 (28.28 to 33.59)	0.00 (-0.04 to 0.04)	0.56 (0.43 to 0.64)	0.27 (0.19 to 0.41)	-3.70 (-4.28 to -3.10)	21.05 (16.43 to 24.23)	12.28 (9.43 to 16.08)	-2.69 (-3.09 to -2.29)	
Qatar	38.47 (31.44 to 45.79)	44.46 (36.75 to 53.66)	0.53 (0.42 to 0.64)	0.37 (0.24 to 0.59)	0.34 (0.21 to 0.51)	0.52 (0.07 to 0.98)	14.06 (10.55 to 19.68)	13.06 (9.28 to 17.59)	0.13 (-0.12 to 0.37)	
Republic of Korea	37.89 (33.49 to 42.88)	70.21 (66.03 to 74.79)	1.25 (0.89 to 1.61)	1.76 (0.56 to 2.34)	0.30 (0.23 to 0.39)	-7.96 (-8.67 to -7.25)	31.72 (18.30 to 38.85)	15 (11.13 to 19.33)	-3.63 (-4.02 to -3.23)	
Republic of Moldova	67.21 (55.76 to 80.49)	66.12 (59.51 to 73.09)	0.47 (0.09 to 0.85)	0.38 (0.32 to 0.47)	0.33 (0.27 to 0.39)	-0.60 (-0.96 to -0.25)	22.87 (18.45 to 27.69)	20.72 (16.98 to 25.12)	-0.20 (-0.52 to 0.13)	
Romania	70.01 (58.65 to 82.51)	70.93 (63.66 to 79.55)	0.37 (0.16 to 0.59)	0.27 (0.23 to 0.31)	0.23 (0.18 to 0.28)	-0.65 (-1.01 to -0.29)	21.99 (17.23 to 27.18)	17.97 (13.92 to 22.6)	-0.63 (-0.89 to -0.37)	
Russian Federation	95.59 (81.25 to 111.84)	85.89 (72.98 to 100.35)	-0.12 (-0.25 to 0.00)	0.57 (0.42 to 0.66)	0.56 (0.46 to 0.66)	-0.40 (-0.74 to -0.06)	30.76 (24.06 to 37.42)	28.04 (22.97 to 34.48)	-0.52 (-0.70 to -0.35)	
Rwanda	6.69 (5.55 to 8.31)	7.89 (6.47 to 9.74)	0.57 (0.40 to 0.74)	0.92 (0.61 to 1.40)	0.65 (0.42 to 0.92)	-1.79 (-2.06 to -1.51)	29.08 (17.93 to 46.16)	19.33 (12.66 to 28.48)	-1.92 (-2.15 to -1.69)	
Saint Kitts and Nevis	29.59 (24.68 to 35.93)	28.95 (23.75 to 35.61)	0.06 (-0.02 to 0.14)	2.25 (1.70 to 2.63)	1.44 (1.06 to 2.05)	-2.01 (-2.26 to -1.76)	67.93 (52.91 to 79.57)	42.16 (29.05 to 61.00)	-2.07 (-2.32 to -1.82)	
Saint Lucia	25.70 (21.15 to 27.48)	27.48 (22.74 to 27.48)	0.32 (0.22 to 0.32)	0.99 (0.78 to 0.99)	0.65 (0.51 to 0.65)	-2.24 (-2.69 to -2.24)	32.61 (26.63 to 32.61)	22.26 (17.86 to 22.26)	-1.84 (-2.19 to -1.84)	

	to 31.22)	to 33.54)	0.42)	1.15)	0.84)	to -1.78)	to 37.29)	to 28.14)	to -1.49)
Saint Vincent and the Grenadines	24.91 (20.72 to 30.36)	24.40 (20.24 to 29.76)	0.24 (0.13 to 0.34)	1.31 (1.08 to 1.57)	1.22 (0.98 to 1.53)	-0.56 (-0.70 to -0.41)	44.25 (37.35 to 51.61)	38.61 (31.46 to 48.07)	-0.80 (-0.94 to -0.67)
Samoa	5.60 (4.60 to 6.71)	4.77 (3.92 to 5.78)	-0.77 (-1.05 to -0.49)	0.98 (0.66 to 1.49)	0.63 (0.45 to 0.85)	-1.64 (-1.80 to -1.47)	27.95 (18.61 to 40.58)	17.97 (11.92 to 26.18)	-1.62 (-1.75 to -1.49)
San Marino	107.02 (89.88 to 126.67)	112.86 (94.72 to 132.67)	0.23 (0.21 to 0.24)	0.37 (0.27 to 0.48)	0.36 (0.22 to 0.53)	0.22 (0.06 to 0.38)	21.57 (15.79 to 28.34)	21.79 (15.52 to 28.71)	0.15 (0.11 to 0.19)
Sao Tome and Principe	10.50 (8.66 to 12.87)	11.85 (9.61 to 14.64)	0.59 (0.46 to 0.71)	0.46 (0.26 to 0.73)	0.31 (0.21 to 0.50)	-1.58 (-1.93 to -1.24)	15.7 (9.25 to 23.73)	10.34 (7.41 to 15.57)	-1.71 (-2.03 to -1.38)
Saudi Arabia	33.86 (28.47 to 40.38)	34.43 (28.66 to 41.36)	0.22 (0.09 to 0.35)	0.19 (0.11 to 0.31)	0.15 (0.11 to 0.21)	-0.60 (-0.71 to -0.48)	9.73 (6.96 to 13.65)	8.9 (6.65 to 11.75)	-0.18 (-0.25 to -0.10)
Senegal	8.06 (6.57 to 9.88)	8.84 (7.25 to 11.10)	0.39 (0.27 to 0.51)	0.55 (0.29 to 0.93)	0.43 (0.27 to 0.65)	-1.00 (-1.21 to -0.78)	18.61 (9.28 to 29.66)	14.15 (8.71 to 21.53)	-1.12 (-1.32 to -0.91)
Serbia	118.24 (99.70 to 138.39)	151.50 (130.14 to 173.84)	0.43 (0.26 to 0.61)	0.49 (0.37 to 0.78)	0.76 (0.50 to 0.97)	2.49 (2.05 to 2.94)	31.72 (24.28 to 43.38)	39.47 (29.72 to 49.82)	0.83 (0.67 to 0.98)
Seychelles	4.66 (3.75 to 5.71)	5.45 (4.43 to 6.55)	0.52 (0.44 to 0.60)	0.30 (0.19 to 0.38)	0.22 (0.16 to 0.30)	-1.44 (-1.65 to -1.23)	8.38 (5.69 to 10.68)	6.28 (4.77 to 7.85)	-1.35 (-1.51 to -1.19)
Sierra Leone	7.33 (6.06 to 9.02)	8.45 (6.95 to 10.53)	0.64 (0.51 to 0.77)	0.42 (0.19 to 0.72)	0.43 (0.24 to 0.61)	0.20 (-0.07 to 0.48)	15.88 (6.30 to 28.04)	15.30 (8.12 to 23.35)	0.00 (-0.27 to 0.26)
Singapore	47.14 (38.3 to 56.56)	41.88 (34.28 to 51.91)	-0.58 (-0.74 to -0.43)	0.18 (0.14 to 0.20)	0.07 (0.06 to 0.11)	-3.18 (-3.41 to -2.95)	12.19 (9.33 to 15.58)	8.16 (5.69 to 11.25)	-1.52 (-1.73 to -1.31)
Slovakia	165.72 (148.05 to 183.09)	154.57 (140.40 to 170.08)	-0.05 (-0.12 to 0.02)	0.54 (0.45 to 0.84)	0.68 (0.48 to 0.90)	1.56 (1.21 to 1.91)	40.62 (31.28 to 53.36)	40.31 (30.39 to 50.67)	0.34 (0.19 to 0.49)
Slovenia	167.07 (146.63 to 189.8)	179.18 (160.70 to 199.69)	0.15 (0.08 to 0.21)	0.44 (0.33 to 0.56)	0.39 (0.28 to 0.52)	-1.39 (-2.13 to -0.65)	34.68 (25.60 to 44.77)	34.27 (24.57 to 44.81)	-0.42 (-0.67 to -0.17)
Solomon Islands	3.49 (2.80 to 4.25)	3.35 (2.73 to 4.12)	-0.31 (-0.46 to -0.15)	0.75 (0.42 to 1.16)	0.53 (0.33 to 0.79)	-1.42 (-1.56 to -1.29)	24.39 (12.55 to 43.26)	17.28 (10.22 to 29.48)	-1.38 (-1.51 to -1.25)
Somalia	5.39 (4.41 to 6.68)	5.28 (4.33 to 6.56)	-0.09 (-0.12 to -0.06)	0.55 (0.29 to 0.91)	0.48 (0.30 to 0.79)	-0.45 (-0.53 to -0.37)	17.8 (7.75 to 34.12)	14.47 (8.44 to 24.4)	-0.63 (-0.69 to -0.56)
South Africa	11.04 (9.21 to 13.55)	12.40 (10.36 to 15.05)	0.52 (0.44 to 0.60)	0.39 (0.30 to 0.50)	0.39 (0.30 to 0.47)	0.13 (-0.38 to 0.64)	15.07 (10.33 to 20.06)	12.17 (9.76 to 14.04)	-0.56 (-0.99 to -0.14)
South Sudan	6.93 (5.69 to 8.55)	7.78 (6.41 to 9.49)	0.35 (0.31 to 0.40)	0.68 (0.39 to 1.43)	0.65 (0.36 to 1.40)	-0.05 (-0.09 to 0.00)	22.59 (10.42 to 43.44)	19.12 (11.06 to 39.88)	-0.45 (-0.58 to -0.32)
Spain	90.41 (86.16 to 94.9)	134.10 (127.51 to 141.19)	0.77 (0.60 to 0.95)	0.54 (0.46 to 0.60)	0.35 (0.29 to 0.50)	-2.16 (-2.54 to -1.78)	24.91 (20.33 to 30.25)	27.31 (20.61 to 34.99)	-0.26 (-0.47 to -0.05)
Sri Lanka	5.98 (4.90 to 7.28)	9.51 (8.29 to 10.90)	1.67 (1.38 to 1.96)	0.18 (0.14 to 0.23)	0.10 (0.07 to 0.13)	-2.15 (-2.31 to -1.99)	5.73 (4.38 to 7.09)	3.77 (2.86 to 4.79)	-1.45 (-1.57 to -1.33)
Sudan	25.18 (20.47 to 30.96)	25.17 (20.47 to 30.96)	0.90 (0.76 to 1.04)	0.21 (0.10 to 0.32)	0.25 (0.14 to 0.36)	0.95 (0.78 to 1.12)	9.58 (5.87 to 13.29)	10.84 (7.56 to 14.12)	0.71 (0.58 to 0.84)

	to 31.02)	to 37.98)	1.05)	0.39)	0.43)	1.11)	15.53)	to 15.32)	0.84)
Suriname	25.78 (21.39 to 31.18)	25.28 (20.76 to 30.88)	0.11 (0.01 to 0.22)	1.00 (0.77 to 1.18)	0.66 (0.50 to 0.86)	-1.99 (-2.24 to -1.73)	35.66 (26.78 to 43.03)	23.00 (18.20 to 29.10)	-1.99 (-2.24 to -1.75)
Sweden	294.18 (253.51 to 336.93)	315.22 (271.18 to 360.86)	0.31 (0.28 to 0.34)	0.68 (0.56 to 0.75)	0.38 (0.31 to 0.56)	-3.16 (-4.26 to -2.06)	56.12 (41.20 to 73.41)	53.00 (37.35 to 71.73)	-0.35 (-0.54 to -0.16)
Switzerland	129.02 (116.30 to 142.70)	134.73 (121.98 to 148.05)	0.09 (0.06 to 0.12)	0.68 (0.54 to 0.77)	0.58 (0.47 to 0.75)	-1.03 (-1.80 to -0.26)	32.21 (25.49 to 39.69)	29.51 (22.30 to 37.67)	-0.56 (-0.82 to -0.31)
Syrian Arab Republic	28.71 (23.39 to 35.03)	33.67 (27.34 to 40.47)	0.96 (0.65 to 1.26)	0.46 (0.23 to 0.76)	0.36 (0.19 to 0.52)	-1.00 (-1.20 to -0.80)	14.71 (9.86 to 20.18)	12.75 (9.00 to 16.93)	-0.46 (-0.53 to -0.39)
Taiwan (Province of China)	11.23 (9.74 to 12.86)	27.80 (24.80 to 31.28)	4.29 (3.71 to 4.86)	0.91 (0.57 to 1.04)	0.50 (0.38 to 0.65)	-2.08 (-3.37 to -0.78)	17.35 (12.32 to 19.43)	12.40 (10.06 to 15.44)	-0.85 (-1.78 to 0.10)
Tajikistan	68.84 (56.59 to 83.10)	71.19 (59.54 to 85.49)	0.12 (0.07 to 0.18)	0.41 (0.28 to 0.58)	0.3 (0.22 to 0.41)	-0.79 (-0.88 to -0.70)	30.29 (19.52 to 43.28)	20.60 (15.55 to 26.90)	-0.89 (-1.10 to -0.69)
Thailand	3.31 (2.57 to 4.15)	4.28 (3.44 to 5.22)	0.96 (0.83 to 1.08)	0.2 (0.14 to 0.26)	0.12 (0.08 to 0.15)	-2.46 (-2.78 to -2.14)	6.06 (4.39 to 7.89)	3.64 (2.76 to 4.68)	-2.40 (-2.71 to -2.09)
Timor-Leste	3.20 (2.51 to 3.91)	3.90 (3.14 to 4.72)	0.84 (0.75 to 0.94)	0.42 (0.17 to 0.83)	0.36 (0.20 to 0.61)	-0.57 (-0.70 to -0.44)	11.64 (5.58 to 22.42)	9.14 (5.17 to 14.89)	-0.95 (-1.13 to -0.77)
Togo	9.42 (7.74 to 11.41)	9.00 (7.38 to 11.07)	0.03 (-0.09 to 0.15)	0.49 (0.28 to 0.76)	0.48 (0.32 to 0.68)	-0.05 (-0.31 to 0.21)	17.29 (9.05 to 26.59)	16.30 (10.74 to 22.75)	-0.23 (-0.48 to 0.01)
Tokelau	4.65 (3.78 to 5.66)	5.36 (4.37 to 6.54)	0.72 (0.46 to 0.97)	0.89 (0.57 to 1.34)	0.58 (0.42 to 0.78)	-1.72 (-1.88 to -1.57)	25.84 (15.77 to 38.77)	16.11 (11.19 to 22.98)	-1.68 (-1.80 to -1.56)
Tonga	5.55 (4.56 to 6.66)	4.96 (4.08 to 5.98)	-0.51 (-0.69 to -0.32)	1.14 (0.67 to 1.64)	0.76 (0.56 to 1.02)	-1.73 (-1.92 to -1.54)	31.30 (19.82 to 44.12)	21.58 (15.55 to 30.10)	-1.63 (-1.83 to -1.44)
Trinidad and Tobago	27.68 (22.88 to 33.63)	27.49 (22.91 to 33.71)	0.31 (0.17 to 0.45)	0.34 (0.24 to 0.39)	0.29 (0.21 to 0.39)	-0.98 (-1.25 to -0.72)	14.27 (10.86 to 16.75)	12.54 (9.51 to 16.14)	-0.66 (-0.84 to -0.48)
Tunisia	35.29 (29.00 to 42.68)	40.47 (33.21 to 49.35)	0.59 (0.45 to 0.73)	0.15 (0.1 to 0.22)	0.14 (0.09 to 0.20)	-0.05 (-0.15 to 0.06)	9.05 (6.50 to 12.22)	9.36 (6.89 to 12.40)	0.27 (0.17 to 0.37)
Turkey	50.66 (44.42 to 56.99)	98.87 (84.96 to 113.45)	2.04 (1.87 to 2.20)	0.67 (0.43 to 1.06)	0.40 (0.30 to 0.56)	-1.87 (-2.02 to -1.72)	27.88 (19.30 to 38.53)	25.05 (19.42 to 32.24)	-0.61 (-0.70 to -0.51)
Turkmenistan	69.03 (57.31 to 82.24)	77.89 (64.42 to 92.76)	0.43 (0.32 to 0.54)	0.37 (0.28 to 0.49)	0.33 (0.22 to 0.46)	-0.50 (-0.78 to -0.21)	24.59 (17.78 to 31.67)	22.90 (16.63 to 29.27)	-0.20 (-0.38 to -0.02)
Tuvalu	4.48 (3.63 to 5.44)	4.08 (3.38 to 4.88)	-0.47 (-0.63 to -0.30)	1.08 (0.65 to 1.59)	0.71 (0.47 to 1.05)	-1.60 (-1.73 to -1.47)	33.30 (17.86 to 54.06)	21.17 (13.37 to 33.22)	-1.65 (-1.76 to -1.55)
Uganda	5.79 (4.75 to 7.14)	7.14 (5.88 to 8.92)	1.01 (0.88 to 1.15)	0.59 (0.37 to 0.91)	0.61 (0.40 to 0.92)	-0.03 (-0.17 to 0.10)	17.22 (11.39 to 25.60)	17.40 (12.18 to 25.46)	-0.02 (-0.16 to 0.13)
Ukraine	68.71 (57.64 to 82.57)	68 (57.27 to 80.79)	0.19 (0.03 to 0.35)	0.34 (0.26 to 0.45)	0.39 (0.31 to 0.48)	0.17 (-0.10 to 0.44)	21.06 (16.76 to 26.65)	23.62 (18.99 to 28.82)	0.34 (0.12 to 0.56)
United Arab Emirates	36.50 (30.28 to 44.12)	42.72 (35.58 to 51.97)	0.73 (0.60 to 0.87)	0.21 (0.09 to 0.43)	0.24 (0.15 to 0.43)	0.72 (0.25 to 1.20)	10.79 (6.88 to 16.90)	12.40 (8.88 to 17.45)	0.73 (0.52 to 0.94)
United Kingdom	223.81 (197.49 to 240.37)	240.37 (214.96 to 257.78)	0.17 (0.12 to 0.21)	0.97 (0.85 to 1.18)	1.30 (1.12 to 1.44)	1.22 (0.84 to 1.59)	52.80 (41.67 to 65.37)	59.34 (47.21 to 72.73)	0.41 (0.25 to 0.57)

	251.35)	267.14)								
United Republic of Tanzania	7.20 (5.89 to 8.90)	7.76 (6.36 to 9.50)	0.22 (0.10 to 0.35)	0.58 (0.40 to 0.81)	0.60 (0.41 to 0.89)	0.38 (0.19 to 0.57)	19.56 (13.24 to 32.21)	18.91 (12.48 to 26.55)	0.25 (0.07 to 0.43)	
United States of America	343.12 (295.81 to 394.51)	193.07 (179.65 to 206.87)	-1.59 (-2.08 to -1.09)	0.67 (0.60 to 0.82)	1.02 (0.80 to 1.11)	1.80 (1.52 to 2.07)	64.72 (47.50 to 84.88)	49.82 (40.25 to 60.19)	-0.48 (-0.78 to -0.18)	
United States Virgin Islands	31.96 (26.73 to 38.19)	33.22 (27.69 to 39.97)	0.23 (0.16 to 0.31)	0.81 (0.56 to 1.02)	0.45 (0.34 to 0.59)	-2.32 (-2.66 to -1.99)	26.35 (19.55 to 32.66)	15.91 (12.54 to 20.17)	-2.03 (-2.27 to -1.78)	
Uruguay	17.66 (14.59 to 21.30)	17.41 (14.35 to 21.13)	-0.17 (-0.21 to -0.13)	0.27 (0.23 to 0.37)	0.41 (0.35 to 0.47)	1.10 (0.62 to 1.58)	9.71 (8.22 to 12.16)	12.78 (11.11 to 14.58)	0.63 (0.27 to 0.98)	
Uzbekistan	74.25 (62.30 to 88.98)	75.79 (63.42 to 90.50)	-0.02 (-0.05 to 0.01)	0.28 (0.20 to 0.39)	0.29 (0.23 to 0.39)	-0.33 (-0.58 to -0.09)	23.48 (17.64 to 29.48)	21.90 (17.37 to 27.16)	-0.47 (-0.58 to -0.36)	
Vanuatu	4.27 (3.44 to 5.21)	3.94 (3.23 to 4.77)	-0.42 (-0.59 to -0.24)	1.22 (0.69 to 2.03)	0.84 (0.52 to 1.24)	-1.74 (-1.94 to -1.54)	34.45 (18.68 to 54.26)	25.36 (15.29 to 38.79)	-1.58 (-1.80 to -1.36)	
Venezuela (Bolivarian Republic of)	29.50 (25.29 to 33.94)	29.03 (24.54 to 34.19)	-0.01 (-0.05 to 0.03)	0.25 (0.17 to 0.29)	0.15 (0.11 to 0.21)	-2.32 (-2.82 to -1.82)	12.00 (9.33 to 14.20)	8.87 (6.84 to 11.26)	-1.36 (-1.66 to -1.05)	
Viet Nam	9.12 (7.04 to 11.43)	18.35 (14.68 to 22.55)	2.72 (2.05 to 3.39)	0.58 (0.30 to 0.88)	0.22 (0.15 to 0.32)	-3.98 (-4.35 to -3.61)	13.87 (8.53 to 18.99)	7.60 (5.65 to 9.80)	-2.48 (-2.72 to -2.23)	
Yemen	23.40 (18.89 to 29.12)	28.03 (22.65 to 34.94)	0.95 (0.76 to 1.14)	0.28 (0.15 to 0.52)	0.33 (0.22 to 0.52)	0.85 (0.73 to 0.97)	10.64 (7.11 to 15.89)	12.40 (9.18 to 16.77)	0.79 (0.66 to 0.93)	
Zambia	6.36 (5.26 to 7.78)	8.42 (6.92 to 10.46)	0.86 (0.63 to 1.10)	0.86 (0.60 to 1.32)	0.70 (0.51 to 0.94)	-0.86 (-1.04 to -0.69)	27.59 (16.02 to 45.42)	20.49 (14.47 to 27.66)	-1.05 (-1.14 to -0.96)	
Zimbabwe	8.69 (7.15 to 10.74)	8.91 (7.29 to 11.06)	0.21 (0.11 to 0.30)	0.47 (0.36 to 0.64)	0.58 (0.35 to 0.86)	0.96 (0.85 to 1.06)	14.20 (10.79 to 19.20)	17.38 (10.28 to 25.35)	1.22 (0.99 to 1.44)	

Abbreviations: CI=confidence interval. DALY=disability adjusted life year.

EAPC=estimated annual percentage change. UI=uncertainty interval.

Supplementary Table 4 Incident cases, YLLs and YLDs of inflammatory bowel disease (IBD) in 1990 and 2019 and their percentage change from 1990 to 2019

Characteristics	Incident cases			YLLs			YLDs		
	1990 No. (95%UI)	2019 No. (95%UI)	Percentage change (%) (95%UI)	1990 No. (95%UI)	2019 No. (95%UI)	Percentage change (%) (95%UI)	1990 No. (95%UI)	2019 No. (95%UI)	Percentage change (%) (95%UI)
Global	293572 (257425 to 336651)	404552 (360521 to 456478)	37.80 (33.91 to 41.98)	757137 (557008 to 914270)	895798 (779706 to 999120)	18.31 (-1.81 to 52.08)	491137 (326283 to 678806)	726701 (487015 to 993466)	47.96 (43.96 to 52.28)
Sex									
Male	153074 (133344 to 174640)	213814 (189759 to 241304)	39.68 (36.00 to 43.73)	370299 (264345 to 462642)	450214 (368766 to 507382)	21.58 (-1.85 to 53.89)	230665 (152583 to 318772)	352534 (235403 to 486701)	52.83 (48.57 to 57.83)
Female	140498 (123361 to 161173)	190738 (171154 to 213778)	35.76 (31.29 to 39.92)	386839 (242819 to 477114)	445584 (372799 to 510194)	15.19 (-5.95 to 67.02)	260473 (173833 to 359493)	374167 (251188 to 513406)	43.65 (39.16 to 48.19)
SDI quintile									
High	171841 (151878 to 195746)	196451 (179556 to 217510)	14.32 (9.64 to 19.56)	139690 (129255 to 171300)	268406 (221318 to 288862)	92.14 (36.87 to 107.98)	275795 (183466 to 378544)	334924 (229615 to 452309)	21.44 (15.85 to 27.66)
High-middle	71474 (62545 to 81510)	94553 (84101 to 107156)	32.29 (29.05 to 36.06)	149876 (130428 to 171308)	151980 (137423 to 168345)	1.40 (-11.32 to 17.80)	138460 (92476 to 192296)	200814 (133980 to 276597)	45.03 (40.58 to 50.41)
Middle	27459 (23259 to 32310)	59817 (50973 to 70648)	117.84 (108.98 to 127.40)	201655 (144191 to 243718)	167470 (141946 to 187219)	-16.95 (-32.64 to 19.35)	46484 (30292 to 65651)	123619 (80636 to 174495)	165.94 (155.28 to 177.70)
Low-middle	17434 (14532 to 20935)	36681 (30862 to 44031)	110.40 (104.05 to 116.72)	179309 (103608 to 244139)	184730 (144128 to 223656)	3.02 (-21.85 to 54.27)	23711 (15318 to 33814)	51855 (33811 to 73563)	118.69 (110.14 to 127.95)
Low	5279 (4395 to 6379)	12215 (10164 to 14793)	131.41 (126.67 to 136.00)	86179 (39359 to 140538)	122638 (86434 to 167342)	42.31 (-5.62 to 150.88)	6540 (4199 to 9362)	15228 (9694 to 22000)	132.87 (123.17 to 142.33)
GBD region									
Andean Latin America	472 (402 to 550)	1128 (975 to 1314)	138.95 (128.76 to 150.71)	10085 (4860 to 16590)	4311 (3237 to 5564)	-57.25 (-76.23 to -4.50)	682 (439 to 990)	1631 (1060 to 2311)	139.04 (119.92 to 161.86)
Australasia	2979 (2556 to 3481)	6446 (5755 to 7212)	116.39 (101.08 to 132.24)	2212 (1997 to 2709)	5448 (4212 to 6156)	146.25 (61.5 to 182.75)	3590 (2340 to 5079)	7879 (5232 to 10860)	119.48 (94.61 to 145.44)
Caribbean	677 (580 to 796)	1312 (1121 to 1571)	93.82 (84.67 to 103.42)	6186 (3853 to 10389)	6861 (4657 to 9603)	10.92 (-26.38 to 51.60)	1266 (836 to 1782)	2038 (1332 to 2893)	61.05 (49.16 to 73.60)
Central Asia	3514 (2995 to 4146)	6461 (5487 to 7637)	83.87 (77.84 to 90.36)	9604 (7718 to 11578)	9458 (8184 to 10959)	-1.52 (-20.39 to 17.35)	6348 (4181 to 9075)	10778 (7154 to 15134)	69.79 (58.22 to 81.49)

						25.90)				
		20997	14809	-29.47	19517	20261		42029	34433	-18.07
Central Europe		(18082 to 24170)	(13443 to 16391)	(-33.69 to -24.67)	(17440 to 21350)	(17005 to 23354)	3.81 (-12.56 to 21.14)	(28219 to 58172)	(23103 to 46581)	(-23.95 to -11.37)
Central America	Latin	3968 (3402 to 4618)	6754 (5834 to 7826)	70.22 (64.07 to 77.19)	11909 (10476 to 13363)	23887 (19416 to 28208)	100.58 (62.63 to 141.31)	6187 (4023 to 8802)	12291 (8076 to 17492)	98.64 (90.00 to 107.98)
Central Sub-Saharan Africa		381 (318 to 469)	1150 (955 to 1400)	201.42 (188.00 to 216.18)	9036 (4403 to 17181)	14431 (9735 to 21338)	59.71 (-15.47 to 217.75)	455 (291 to 663)	1142 (725 to 1644)	151.34 (136.85 to 168.27)
East Asia		17567 (14627 to 20802)	52319 (44680 to 61455)	197.82 (178.88 to 220.44)	202402 (132058 to 259475)	101852 (80904 to 117925)	-49.68 (-63.19 to -16.68)	37829 (24646 to 53906)	138111 (90529 to 194304)	265.09 (244.38 to 290.80)
Eastern Europe		18150 (15600 to 21209)	19500 (16838 to 22671)	7.44 (5.08 to 9.90)	39012 (29086 to 45400)	42550 (36378 to 48906)	9.07 (-8.79 to 41.38)	33920 (22663 to 47811)	34573 (23253 to 48708)	1.92 (-2.34 to 6.15)
Eastern Sub-Saharan Africa		1092 (908 to 1315)	2938 (2449 to 3538)	168.96 (163.69 to 175.74)	34323 (15796 to 66928)	49854 (36274 to 71146)	45.25 (-23.18 to 204.58)	1157 (736 to 1664)	3074 (1958 to 4469)	165.68 (159.54 to 172.36)
High-income Asia Pacific		18105 (15391 to 21422)	27084 (23870 to 30621)	49.59 (40.22 to 59.35)	14265 (11234 to 15903)	10285 (8672 to 13984)	-27.90 (-41.19 to 11.39)	37434 (24881 to 52603)	68316 (45509 to 94577)	82.50 (67.39 to 99.60)
High-income North America		107616 (94147 to 123884)	99611 (91945 to 109000)	-7.44 (-13.45 to -0.48)	48899 (45188 to 60393)	111196 (90610 to 118997)	127.40 (58.53 to 147.53)	160173 (106818 to 221989)	134037 (92136 to 178957)	-16.32 (-22.94 to -9.00)
North Africa and Middle East		8107 (7040 to 9204)	22722 (19277 to 26952)	180.29 (162.24 to 198.18)	21634 (13448 to 31651)	30142 (25222 to 36090)	39.33 (-4.16 to 131.21)	13804 (8984 to 19350)	42612 (27805 to 59873)	208.69 (184.84 to 233.72)
Oceania		22 (18 to 27)	63 (52 to 77)	181.23 (166.43 to 197.89)	1003 (571 to 1593)	1628 (1040 to 2510)	62.31 (1.40 to 173.45)	33 (20 to 48)	69 (43 to 102)	109.64 (96.04 to 124.81)
South Asia		18439 (15169 to 22582)	39705 (32943 to 48454)	115.33 (107.88 to 123.07)	146986 (82781 to 202629)	170233 (122056 to 222489)	15.82 (-12.64 to 63.63)	24461 (15784 to 35449)	51744 (33609 to 74915)	111.54 (102.18 to 121.79)
Southeast Asia		1882 (1527 to 2270)	4980 (4182 to 5972)	164.62 (151.61 to 181.06)	42561 (28111 to 54072)	38819 (32029 to 46584)	-8.79 (-30.14 to 30.72)	2755 (1714 to 4108)	7867 (5022 to 11568)	185.53 (161.80 to 213.61)
Southern America	Latin	879 (742 to 1030)	1382 (1177 to 1620)	57.15 (49.53 to 64.67)	3794 (3293 to 4092)	5362 (4801 to 6325)	41.34 (23.31 to 66.99)	1454 (944 to 2091)	2377 (1528 to 3449)	63.53 (47.49 to 82.12)
Southern Sub-Saharan Africa		504 (423 to 608)	989 (837 to 1188)	96.29 (90.20 to 103.76)	6007 (3712 to 8927)	7933 (6389 to 9558)	32.06 (-8.55 to 122.99)	608 (390 to 884)	1298 (837 to 1875)	113.43 (105.15 to 123.26)
Tropical America	Latin	7826 (6859 to 8976)	12928 (11334 to 14542)	65.19 (58.70 to 72.03)	16336 (14276 to 18400)	29155 (26876 to 31434)	78.46 (62.35 to 103.68)	11387 (7351 to 15958)	17842 (11730 to 23954)	56.68 (48.38 to 65.76)

		14874)		18011)	33305)			25165)	
	59081	78645		81826	160823		103907	149868	
Western Europe	(53733 to 65529)	(71611 to 86709)	33.11 (30.56 to 35.75)	(75154 to 106409)	(127602 to 175684)	96.54 (25.96 to 118.11)	(69789 to 141113)	(101976 to 202986)	44.23 (39.12 to 49.03)
Western Sub-Saharan Africa	1314 (1102 to 1599)	3628 (3028 to 4401)	176.18 (171.94 to 180.47)	29540 (12580 to 46343)	51309 (30850 to 73337)	73.69 (23.64 to 200.73)	1657 (1057 to 2403)	4717 (3002 to 6840)	184.63 (179.19 to 190.47)

Abbreviations: GBD=Global Burden of Disease. SDI=Socio-demographic Index. UI=uncertainty interval. YLDs=years of life lived with disability. YLLs=years of life lost.

Supplementary Table 5 Age-standardised incidence, YLL and YLD rates for inflammatory bowel disease (IBD) in 1990 and 2019 and their temporal trends from 1990 to 2019

Characteristics	Age-standardised incidence rate			Age-standardized YLL rate			Age-standardized YLD rate		
	per 100,000 population			per 100,000 population			per 100,000 population		
	1990 No. (95%UI)	2019 No. (95%UI)	EAPC No. (95%CI)	1990 No. (95%UI)	2019 No. (95%UI)	EAPC No. (95%CI)	1990 No. (95%UI)	2019 No. (95%UI)	EAPC No. (95%CI)
Global	6.10 (5.35 to 6.96)	4.97 (4.43 to 5.59)	-0.60 (-0.73 to -0.48)	16.47 (12.78 to 19.33)	11.35 (9.89 to 12.70)	-1.33 (-1.37 to -1.30)	10.73 (7.16 to 14.82)	8.80 (5.90 to 12.05)	-0.62 (-0.70 to -0.53)
Sex									
Male	6.39 (5.60 to 7.29)	5.30 (4.72 to 5.99)	-0.55 (-0.68 to -0.43)	17.08 (12.95 to 20.96)	11.98 (9.82 to 13.45)	-1.29 (-1.32 to -1.27)	10.32 (6.91 to 14.27)	8.66 (5.80 to 11.93)	-0.53 (-0.60 to -0.47)
Female	5.80 (5.12 to 6.61)	4.64 (4.16 to 5.20)	-0.65 (-0.78 to -0.53)	15.95 (10.70 to 19.09)	10.74 (8.88 to 12.44)	-1.39 (-1.43 to -1.35)	11.15 (7.43 to 15.41)	8.96 (6.02 to 12.30)	-0.69 (-0.79 to -0.59)
SDI region									
High	18.96 (16.73 to 21.58)	17.61 (16.03 to 19.41)	-0.16 (-0.30 to -0.01)	14.41 (13.34 to 17.57)	15.64 (13.09 to 16.73)	0.56 (0.41 to 0.70)	29.54 (19.66 to 40.6)	27.29 (18.55 to 37.18)	-0.30 (-0.39 to -0.21)
High-middle	6.12 (5.36 to 6.99)	5.58 (4.97 to 6.28)	-0.35 (-0.45 to -0.24)	13.87 (12.06 to 15.79)	8.37 (7.56 to 9.33)	-1.99 (-2.11 to -1.88)	12.05 (8.08 to 16.72)	10.97 (7.26 to 15.12)	-0.26 (-0.40 to -0.13)
Middle	1.83 (1.58 to 2.15)	2.27 (1.94 to 2.68)	1.07 (0.95 to 1.18)	14.68 (11.06 to 17.93)	7 (5.95 to 7.79)	-2.77 (-2.85 to -2.69)	3.43 (2.26 to 4.84)	4.61 (3.01 to 6.52)	1.22 (1.01 to 1.43)
Low-middle	2.00 (1.70 to 2.40)	2.21 (1.88 to 2.65)	0.46 (0.35 to 0.57)	20.36 (13.37 to 27.43)	12.15 (9.66 to 14.61)	-1.99 (-2.09 to -1.90)	2.93 (1.93 to 4.16)	3.22 (2.12 to 4.56)	0.50 (0.38 to 0.62)
Low	1.46 (1.23 to 1.77)	1.52 (1.29 to 1.83)	0.37 (0.31 to 0.44)	20.24 (12.52 to 27.74)	15.18 (11.82 to 19.54)	-1.08 (-1.14 to -1.02)	1.95 (1.26 to 2.82)	2.02 (1.32 to 2.88)	0.28 (0.19 to 0.37)
GBD region									
Andean Latin America	1.63 (1.41 to 1.91)	1.82 (1.57 to 2.12)	-0.05 (-0.29 to 0.20)	23.76 (13.24 to 36.33)	7.15 (5.41 to 9.17)	-4.50 (-5.07 to -3.92)	2.6 (1.67 to 3.8)	2.68 (1.74 to 3.79)	0.05 (0.01 to 0.08)
Australasia	13.56 (11.64 to 15.80)	20.03 (17.79 to 22.57)	0.94 (0.72 to 1.16)	9.98 (9.01 to 12.07)	11.54 (8.93 to 13.01)	1.11 (0.82 to 1.41)	16.21 (10.57 to 22.95)	23.45 (15.53 to 32.51)	0.86 (0.63 to 1.09)
Caribbean	2.11 (1.83 to 2.49)	2.63 (2.24 to 3.14)	0.49 (0.34 to 0.64)	19.10 (12.84 to 29.41)	14.19 (9.36 to 20.49)	-1.13 (-1.33 to -0.93)	4.28 (2.83 to 6.06)	4.02 (2.62 to 5.72)	-0.06 (-0.14 to 0.01)
Central Asia	5.99 (5.13 to 7.07)	6.9 (5.87 to 8.13)	0.50 (0.46 to 0.53)	14.63 (11.46 to 17.20)	10.56 (9.16 to 12.18)	-1.41 (-1.54 to -1.29)	11.48 (7.62 to 16.46)	11.7 (7.77 to 16.39)	0.08 (0.04 to 0.11)
Central Europe	15.78 (13.61 to 18.19)	11.59 (10.51 to 12.81)	-1.38 (-1.76 to -0.99)	15.87 (13.6 to 17.59)	11.95 (10.00 to 13.79)	-0.91 (-1.11 to -0.72)	30.41 (20.26 to 42.11)	23.89 (15.95 to 32.56)	-1.16 (-1.53 to -0.79)
Central Latin America	3.16 (2.74 to 3.66)	2.64 (2.29 to 3.06)	-0.70 (-0.87 to -0.54)	9.15 (8.21 to 10.10)	9.79 (7.96 to 11.55)	0.81 (0.47 to 1.16)	5.69 (3.74 to 8.02)	4.89 (3.22 to 6.96)	-0.50 (-0.58 to -0.42)
Central Sub-Saharan	1.04 (0.88 to 1.26)	1.26 (1.06 to 1.52)	0.64 (0.59 to 0.70)	20.92 (13.38 to 31.16)	16.45 (11.73 to 22.99)	-0.84 (-0.92 to -0.75)	1.33 (0.87 to 1.94)	1.32 (0.85 to 1.91)	-0.16 (-0.35 to 0.04)

Africa										
East Asia	1.45 (1.22 to 1.71)	2.95 (2.55 to 3.43)	2.54 (2.39 to 2.69)	20.78 (14.55 to 26.09)	6.12 (4.90 to 7.03)	-4.52 (-4.79 to -4.24)	3.45 (2.26 to 4.87)	6.95 (4.57 to 9.69)	2.74 (2.37 to 3.12)	
Eastern Europe	7.10 (6.12 to 8.29)	7.34 (6.34 to 8.55)	0.07 (-0.02 to 0.17)	14.85 (11.23 to 17.29)	14.46 (12.37 to 16.65)	-0.56 (-0.82 to -0.30)	12.83 (8.55 to 18.05)	12.21 (8.15 to 17.24)	0.05 (-0.07 to 0.17)	
Eastern Sub-Saharan Africa	0.89 (0.76 to 1.07)	1.04 (0.88 to 1.25)	0.55 (0.48 to 0.61)	21.56 (15.07 to 32.54)	18.27 (13.48 to 24.41)	-0.51 (-0.59 to -0.43)	1.02 (0.66 to 1.46)	1.17 (0.76 to 1.67)	0.44 (0.40 to 0.48)	
High-income Asia Pacific	9.25 (7.88 to 10.91)	14.93 (13.14 to 16.93)	1.10 (0.84 to 1.37)	7.85 (6.04 to 8.80)	2.74 (2.35 to 3.86)	-4.07 (-4.38 to -3.77)	18.58 (12.28 to 26.01)	31.81 (21.06 to 44.06)	1.11 (0.73 to 1.49)	
High-income North America	34.88 (30.59 to 40.02)	24.51 (22.65 to 26.77)	-0.82 (-1.20 to -0.45)	14.94 (13.84 to 18.40)	20.18 (16.54 to 21.51)	1.26 (1.03 to 1.50)	50.69 (33.71 to 70.19)	31.1 (21.34 to 41.87)	-1.28 (-1.69 to -0.86)	
North Africa and Middle East	2.95 (2.59 to 3.38)	3.74 (3.19 to 4.45)	0.62 (0.53 to 0.72)	8.82 (5.96 to 12.45)	6.06 (5.08 to 7.15)	-1.32 (-1.36 to -1.29)	5.55 (3.65 to 7.72)	7.21 (4.74 to 10.1)	0.88 (0.76 to 1.00)	
Oceania	0.44 (0.36 to 0.52)	0.56 (0.47 to 0.67)	0.87 (0.76 to 0.98)	19.89 (12.45 to 28.10)	14.30 (9.82 to 20.46)	-1.32 (-1.41 to -1.23)	0.71 (0.45 to 1.03)	0.63 (0.40 to 0.93)	-0.53 (-0.72 to -0.34)	
South Asia	2.15 (1.79 to 2.64)	2.32 (1.93 to 2.84)	0.47 (0.31 to 0.63)	18.45 (11.93 to 26.19)	10.91 (7.96 to 14.27)	-2.10 (-2.23 to -1.97)	3.02 (1.97 to 4.38)	3.08 (2.01 to 4.49)	0.25 (0.09 to 0.40)	
Southeast Asia	0.46 (0.38 to 0.56)	0.70 (0.59 to 0.84)	1.45 (1.27 to 1.63)	12.43 (7.76 to 15.13)	6.35 (5.08 to 7.61)	-2.69 (-2.85 to -2.53)	0.73 (0.46 to 1.09)	1.09 (0.7 to 1.60)	1.52 (1.22 to 1.83)	
Southern Latin America	1.82 (1.54 to 2.13)	1.92 (1.63 to 2.26)	0.24 (0.15 to 0.34)	8.05 (7.00 to 8.69)	6.85 (6.15 to 8.08)	-0.71 (-0.86 to -0.56)	3.05 (1.98 to 4.38)	3.21 (2.06 to 4.68)	0.23 (0.04 to 0.42)	
Southern Sub-Saharan Africa	1.30 (1.10 to 1.56)	1.37 (1.17 to 1.65)	0.13 (0.06 to 0.20)	13.43 (9.33 to 17.23)	11.79 (9.6 to 13.95)	-0.20 (-0.55 to 0.15)	1.67 (1.08 to 2.41)	1.87 (1.22 to 2.70)	0.48 (0.41 to 0.55)	
Tropical Latin America	6.09 (5.40 to 6.93)	5.25 (4.60 to 6.03)	-0.55 (-0.59 to -0.51)	13.65 (11.97 to 14.87)	12.09 (11.13 to 13.83)	-0.18 (-0.34 to -0.02)	9.72 (6.37 to 13.54)	7.17 (4.71 to 10.10)	-0.83 (-1.04 to -0.63)	
Western Europe	13.98 (12.67 to 15.48)	16.94 (15.33 to 18.73)	0.60 (0.55 to 0.65)	16.07 (14.83 to 20.58)	18.85 (15.12 to 20.42)	0.92 (0.72 to 1.11)	23.17 (15.52 to 31.53)	27.93 (19.01 to 38.12)	0.38 (0.26 to 0.49)	
Western Sub-Saharan Africa	1.01 (0.86 to 1.23)	1.17 (1.00 to 1.41)	0.36 (0.22 to 0.50)	18.33 (10.38 to 29.12)	15.14 (10.25 to 20.82)	-0.69 (-0.80 to -0.58)	1.37 (0.89 to 1.98)	1.63 (1.06 to 2.34)	0.78 (0.66 to 0.90)	

Abbreviations: CI=confidence interval. EAPC=estimated annual percentage change. GBD=Global Burden of Disease. SDI=Socio-demographic Index. UI=uncertainty interval. YLD=years of life lived with disability. YLL=years of life lost.