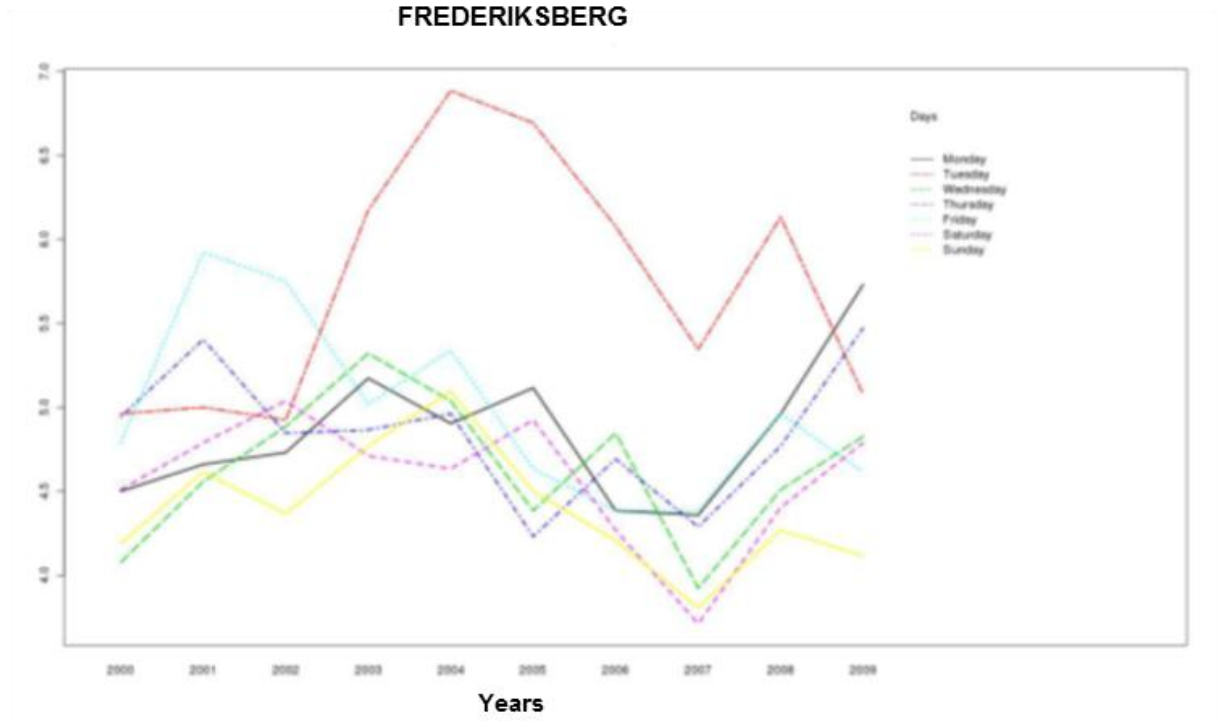


SUPPLEMENTARY FILE

Preliminary descriptive analyses of the data clearly indicated that policies concerning planning of elective Caesarean sections and electively induced labour varied considerably over the ten years for each department and that the patterns were rather different between departments, however overall a mid-weekly peak in births remained even when 'elective' births were excluded. The following figures (Figure III-IX) illustrate this finding.

Figure III Number of births on each day of the week for each year in the obstetric clinic of Frederiksberg a) for all births and b) for 'non-elective' births

a)



b)

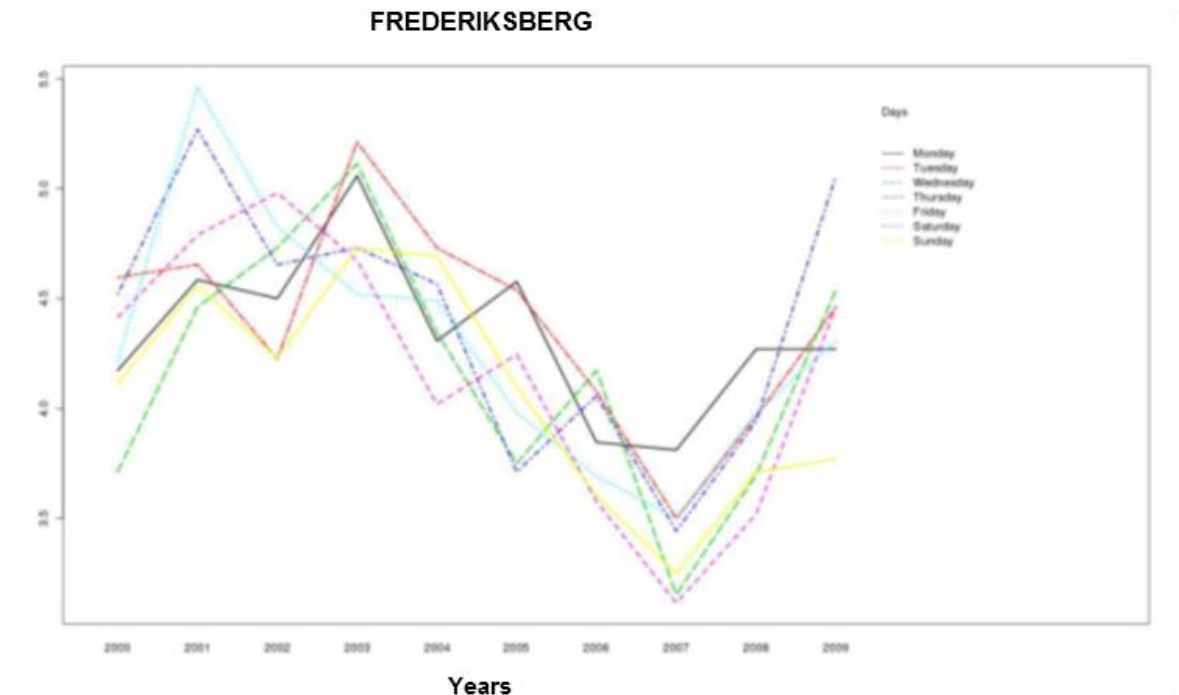
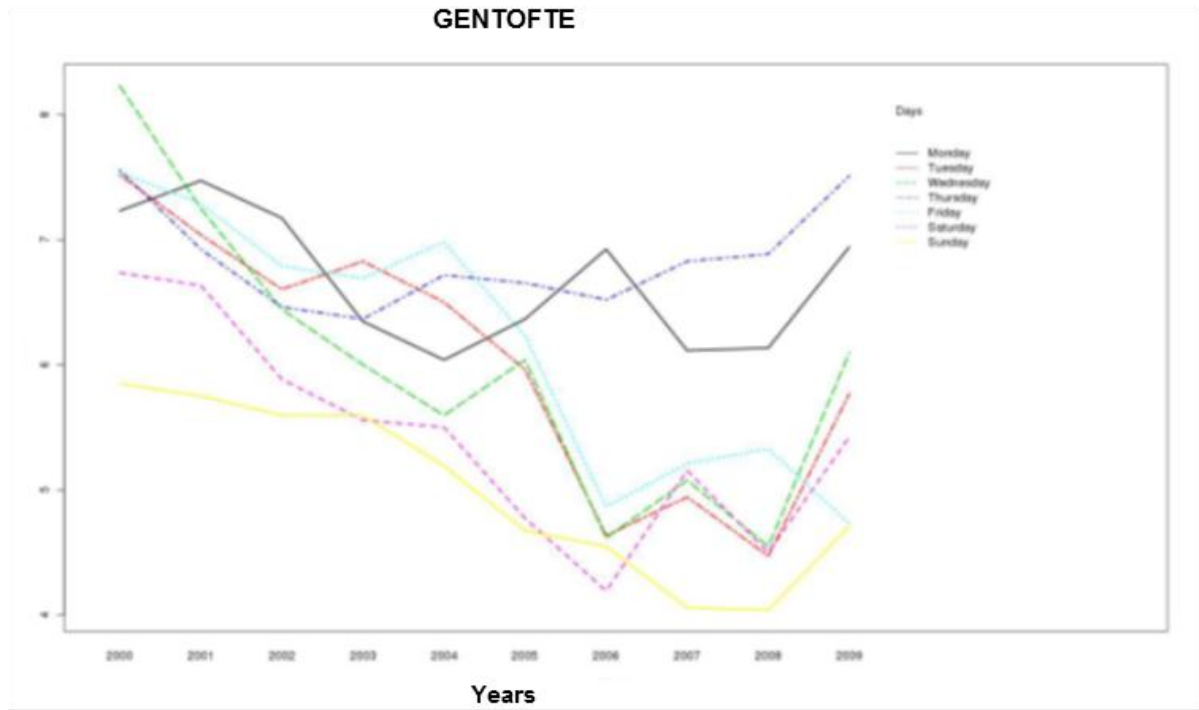


Figure IV Number of births on each day of the week for each year in the obstetric clinic of Gentofte a) for all births and b) for 'non-elective' births

a)



b)

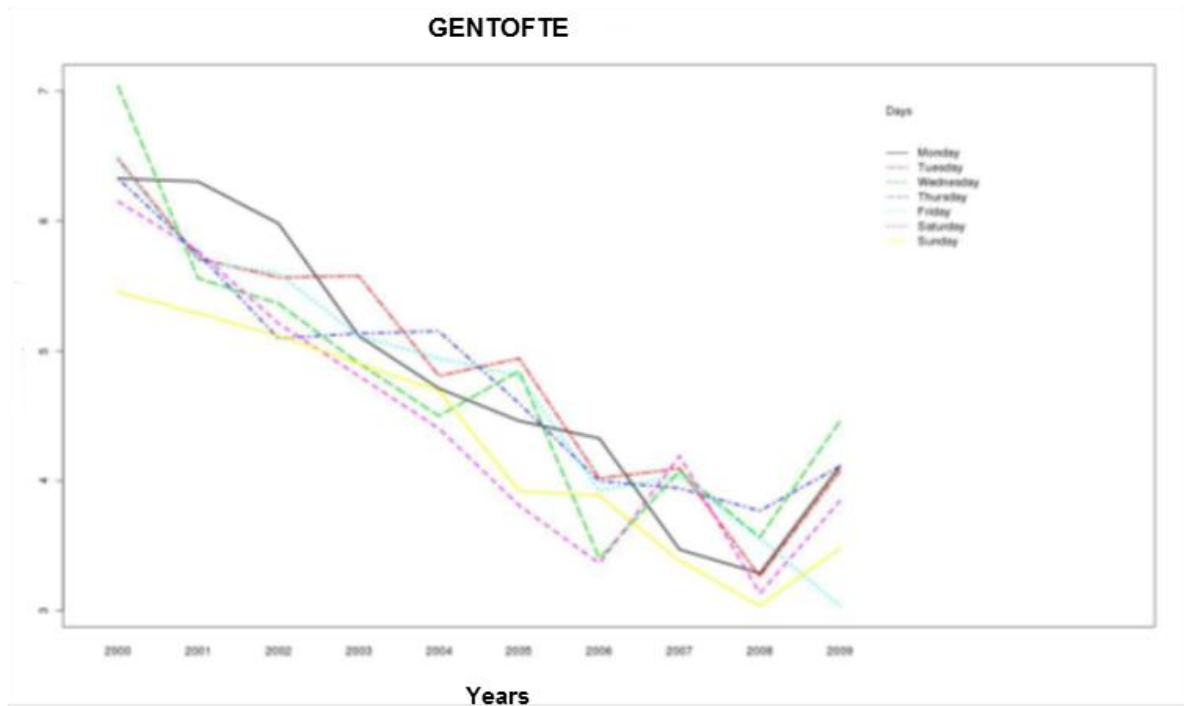
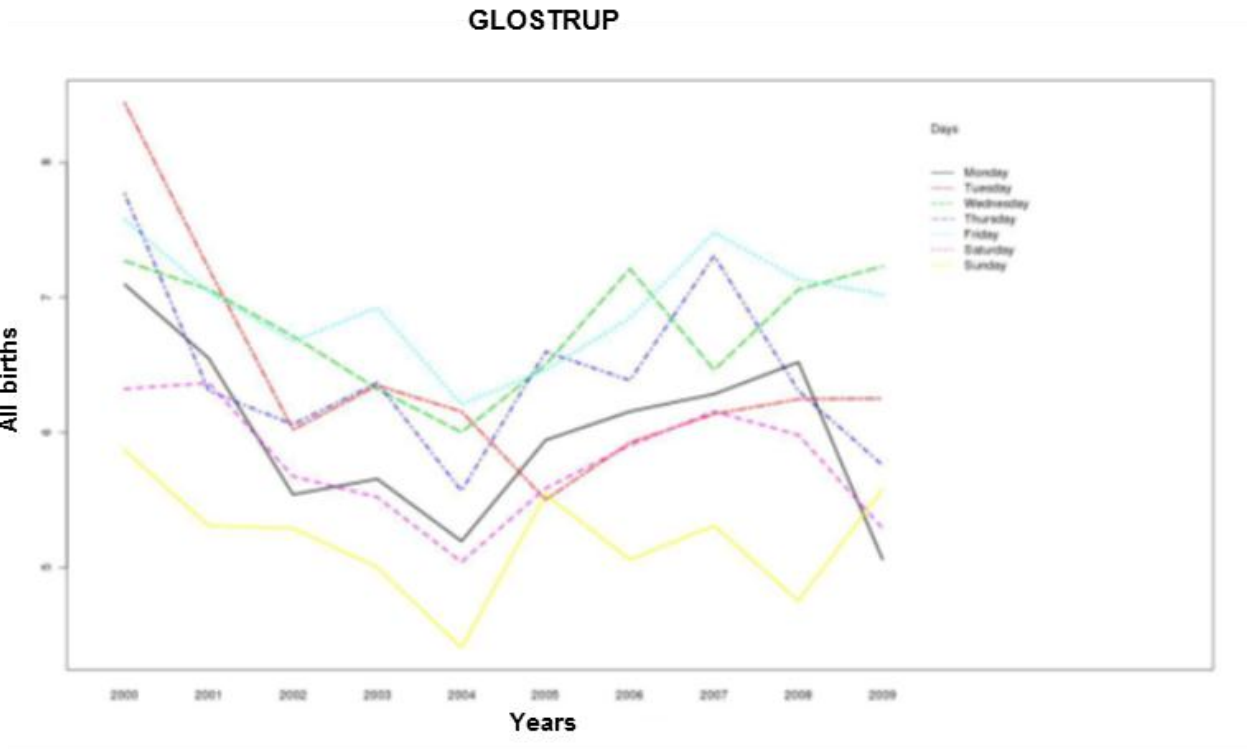


Figure V Number of births on each day of the week for each year in the obstetric clinic of Glostrup a) for all births and b) for 'non-elective' births

a)



b)

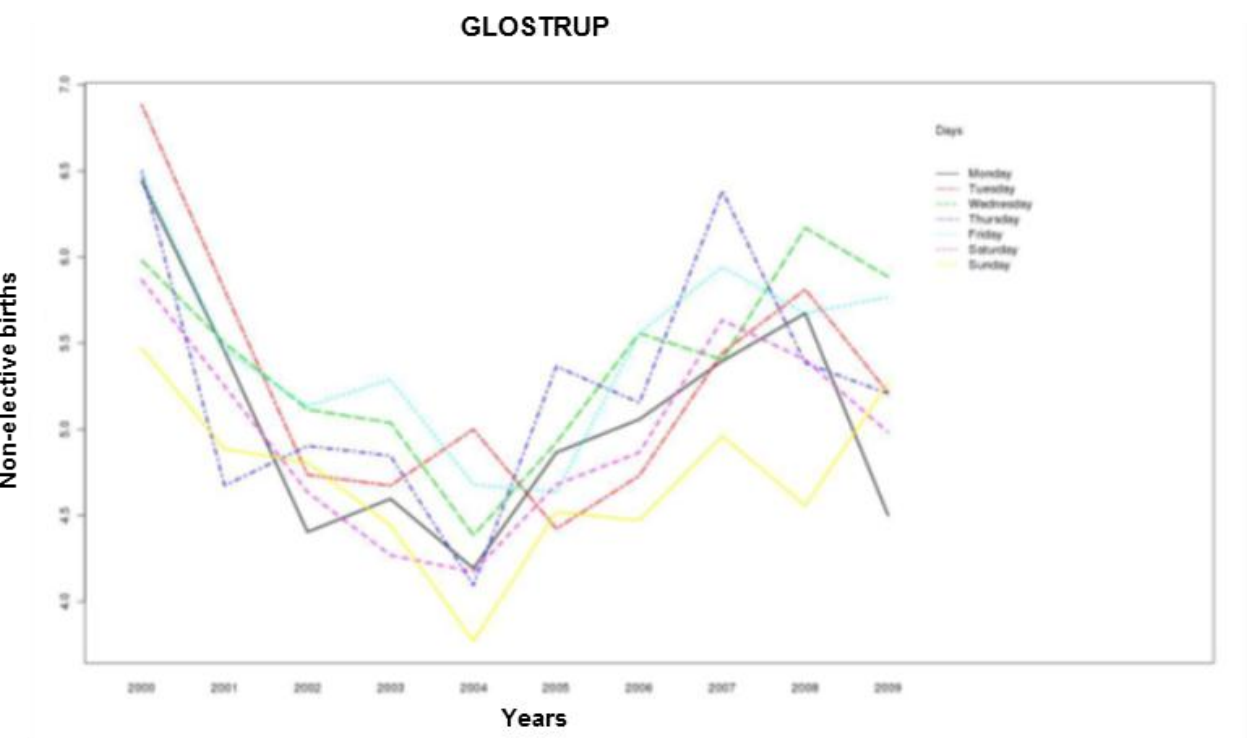
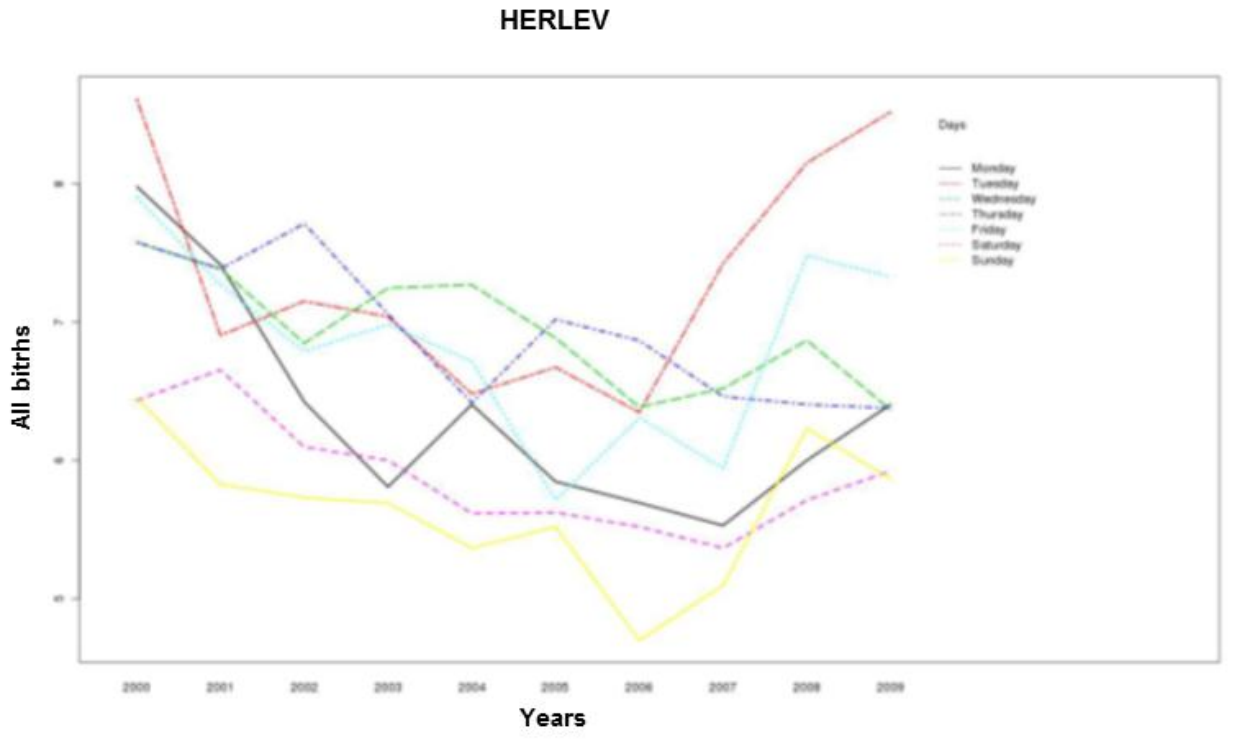


Figure VI Number of births on each day of the week for each year in the obstetric clinic of Herlev a) for all births and b) for 'non-elective' births

a)



b)

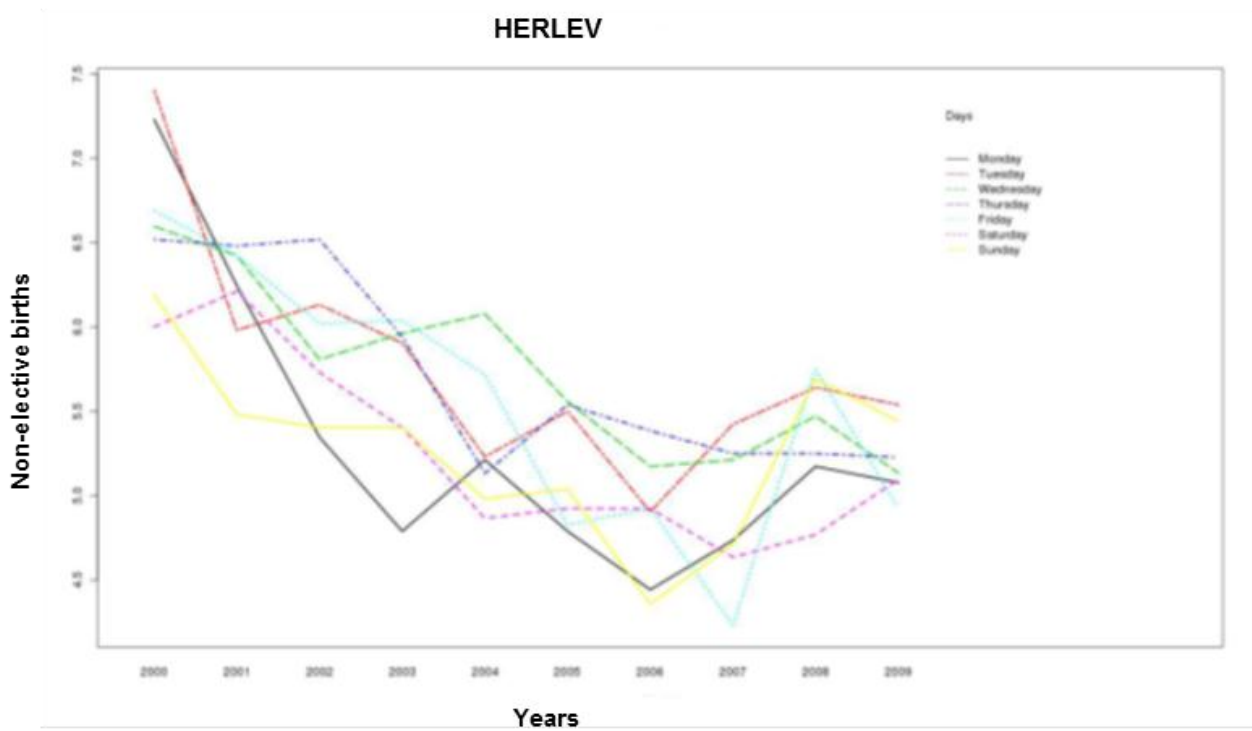
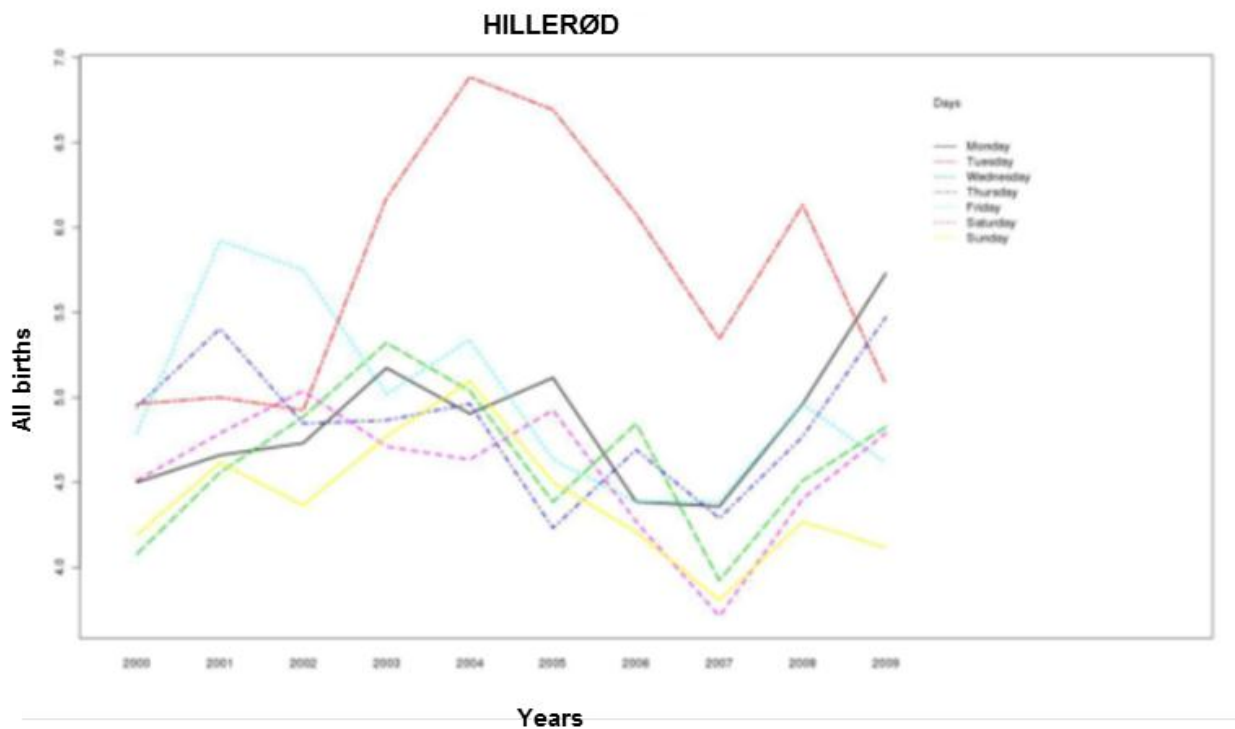


Figure VII Number of births on each day of the week for each year in the obstetric clinic of Hillerød a) for all births and b) for 'non-elective' births

a)



b)

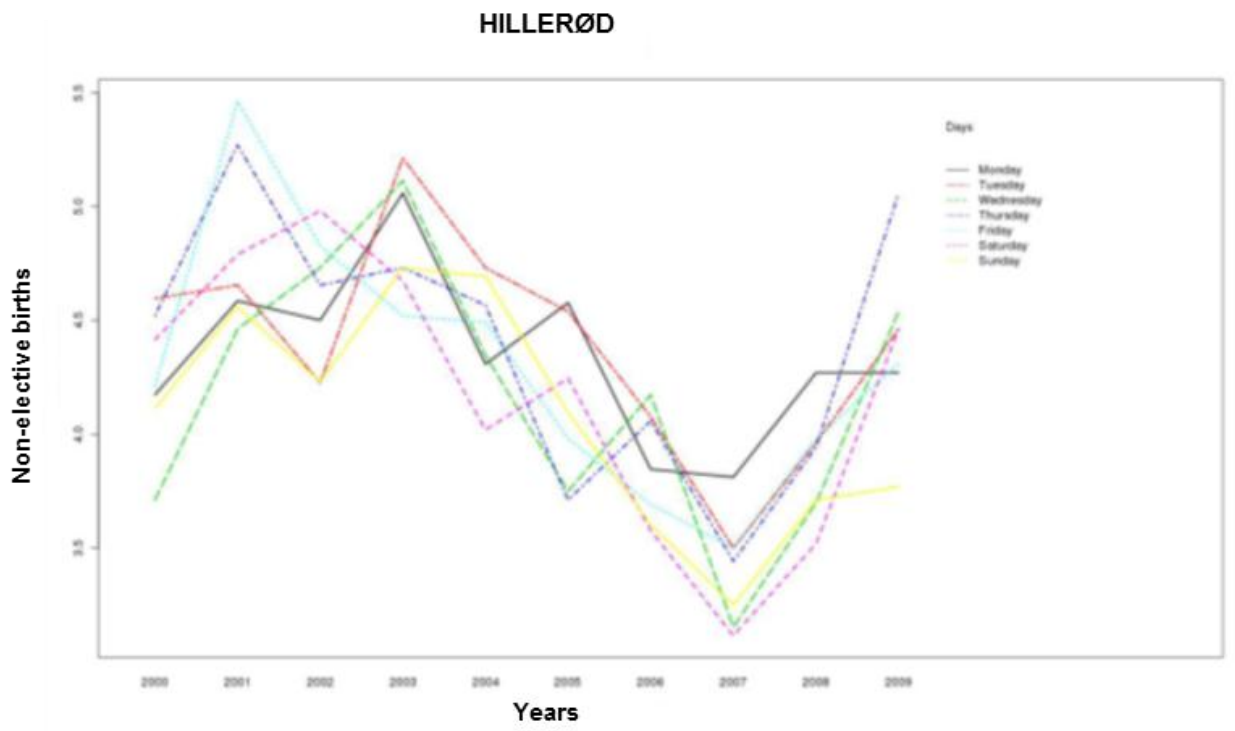
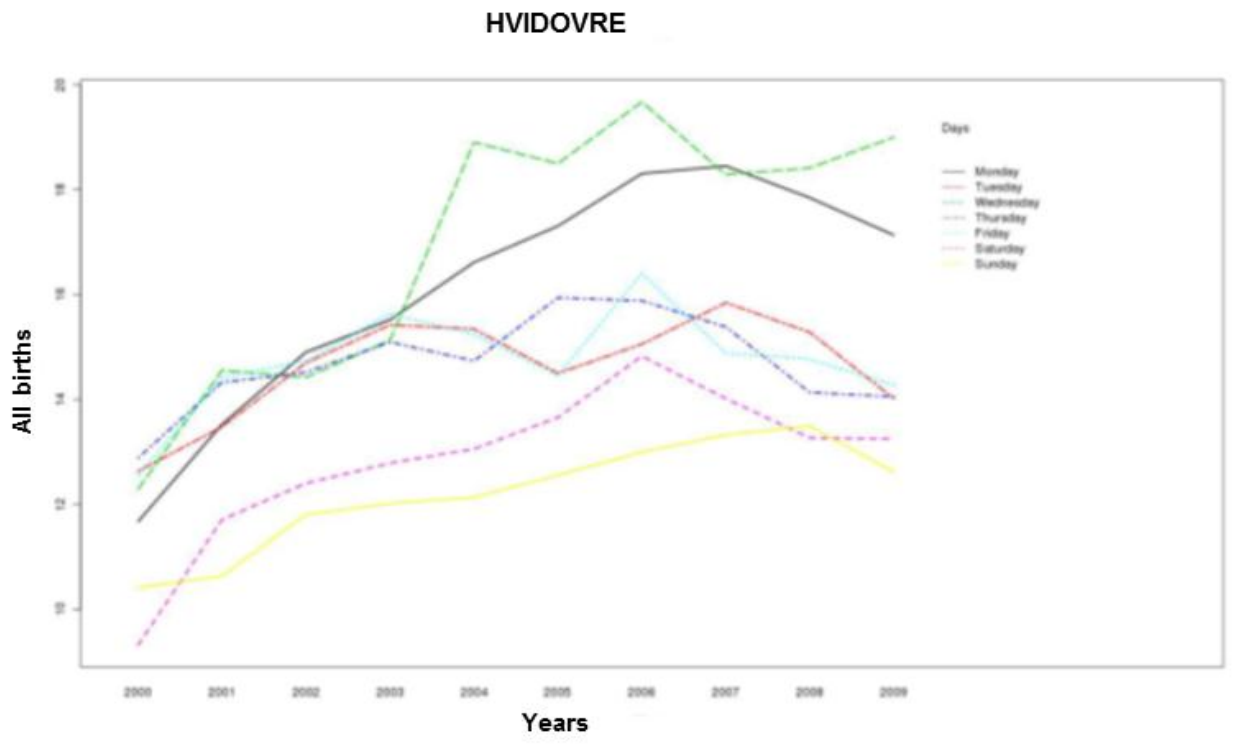


Figure VIII Number of births on each day of the week for each year in the obstetric clinic of Hvidovre a) for all births and b) for 'non-elective' births

a)



b)

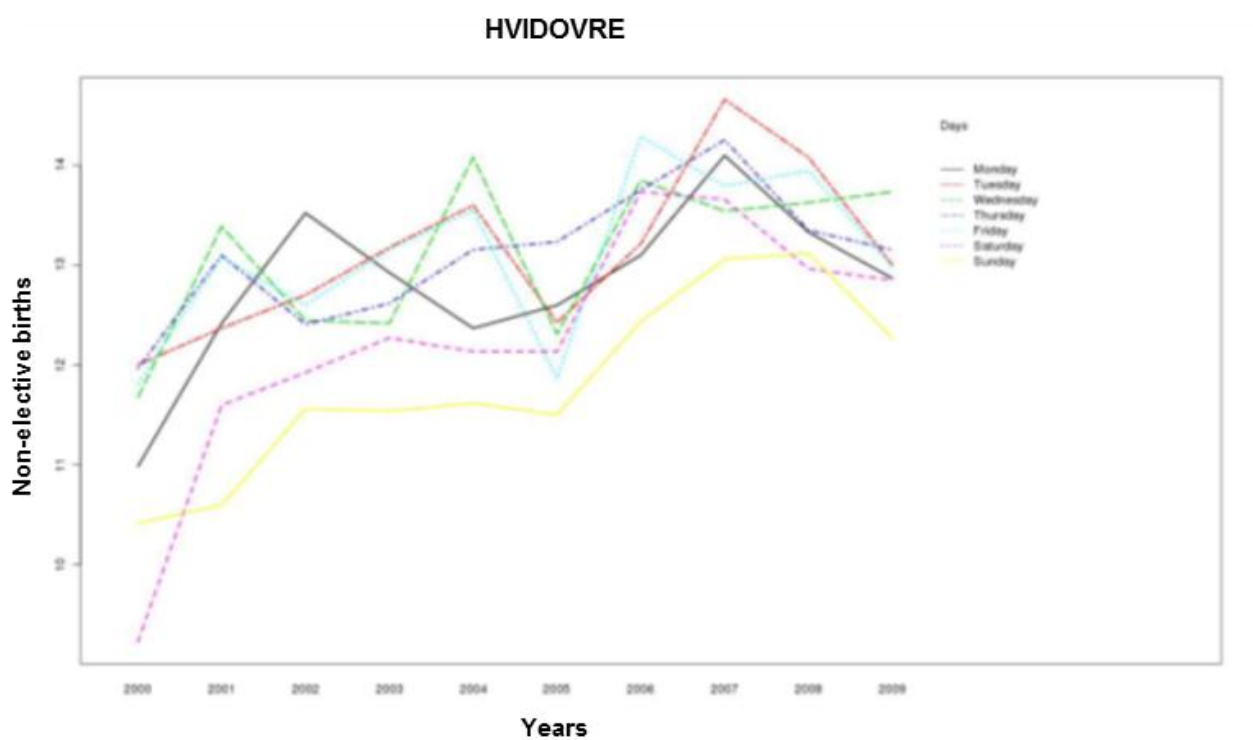
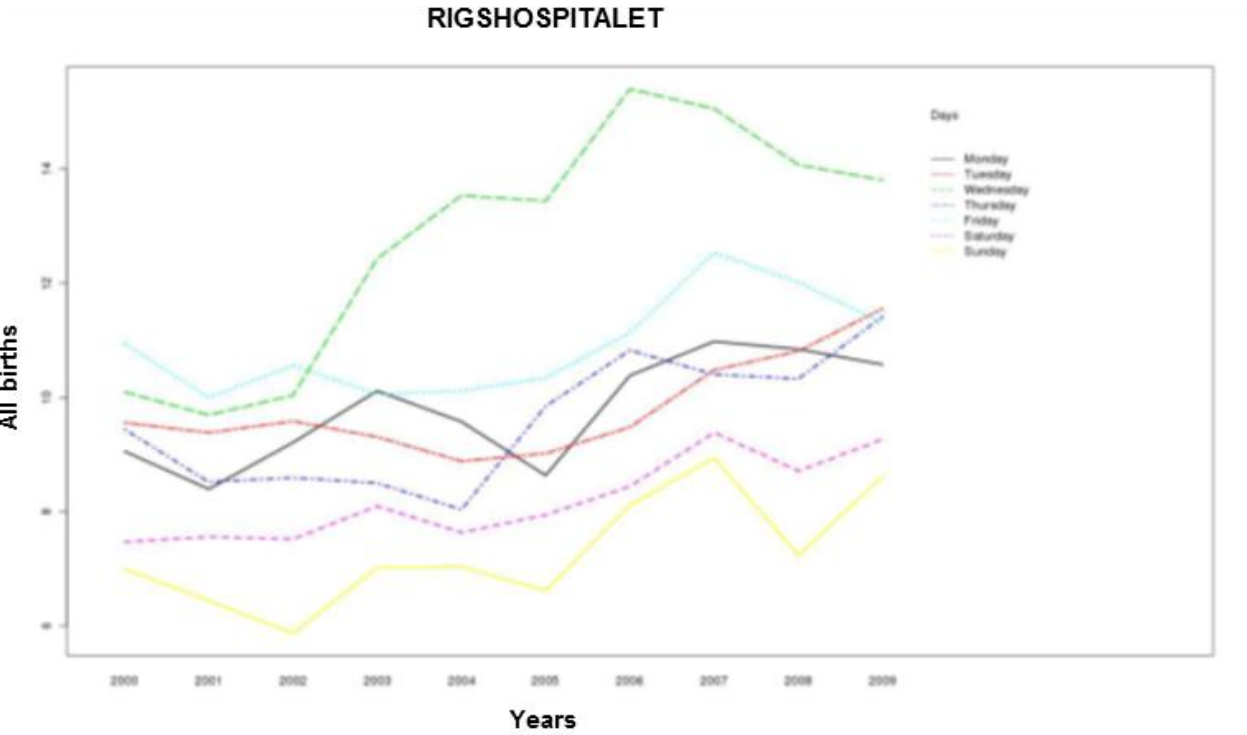


Figure IX Number of births on each day of the week for each year in the obstetric clinic of Rigshospitalet a) for all births and b) for 'non-elective' births

a)



b)

