

Supplementary Figures

Figure 1. Severe chronic and acute inflammation with lymphoid aggregates in a routine histologic section from an individual with high *H. pylori* density. Low power view at 40X of hematoxylin- and eosin-stained histologic section.

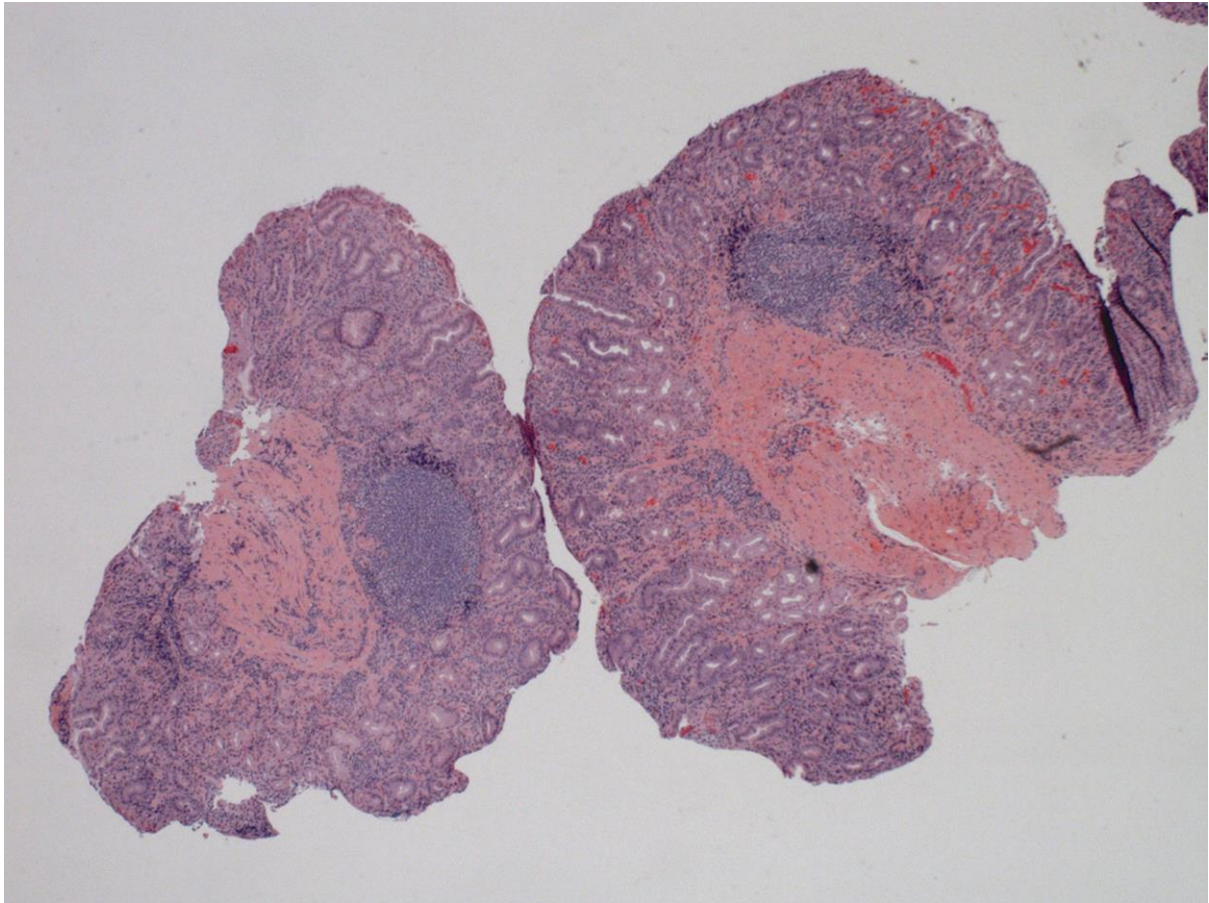


Figure 2. Sheets of plasma cells and many intraepithelial neutrophils in an individual with severe chronic and acute inflammation and high *H. pylori* density. High power view at 400X of routine Giemsa-stained histologic section.

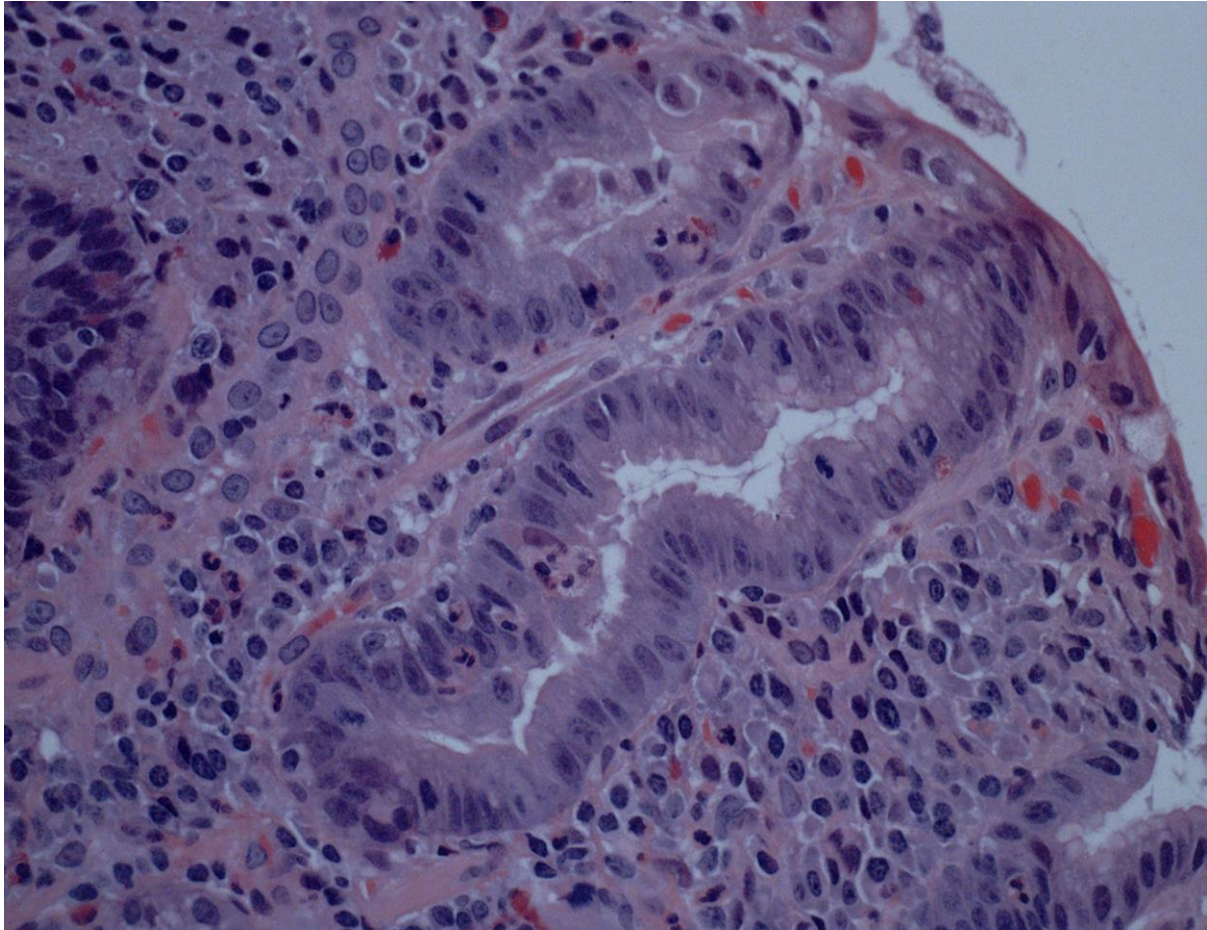


Figure 3. Numerous *Helicobacter pylori* organisms in an individual with high *H. pylori* density and severe chronic and acute inflammation. High power view at 1000X under oil of routine Giemsa-stained histologic section.

