

**Appendix 1.** Crude incidence and prevalence rates of RRT due to DN per million population during the period 2000-2010 in the Netherlands

	Year													APC % (95% CI)
	2000	2001	2002	2003	2004	2005	2006	2007	2008	2009	2010	2011	2012	
<b>Incidence</b>														
All	92.6	97.6	98.9	100.3	103.3	106.3	110.7	113.8	120.9	118.7	117.7	117.6	120.2	2000-2008: 3.0 (2.6;3.4) 2008-2012: 0.3 (-0.8;1.4)
Non-DN	58.0	63.1	64.2	68.1	67.9	67.4	69.1	70.6	75.8	77.3	71.1	71.2	71.5	2000-2009: 2.5 (1.7;3.4) 2009-2012: -2.5 (-6.8;1.9)
Unknown/ Missing	19.1	18.3	17.3	15.1	16.9	21.4	22.9	21.6	22.8	23.1	27.9	26.3	29.0	2000-2003: -4.2 (-14.4;7.1) 2003-2012: 6.5 (4.4;8.7)
DN Both	15.6	16.5	17.3	16.9	18.7	17.3	18.8	21.7	22.2	18.5	18.7	20.1	19.6	2000-2012: 1.9 (0.7;3.2)
T1DN	6.8	6.2	5.1	5.6	5.7	5.8	5.9	5.3	5.1	3.6	4.5	4.4	3.6	2000-2012: -4.1 (-5.9;-2.4)
T2DN	8.9	10.3	12.2	11.3	13.0	11.6	12.9	16.4	17.1	14.9	14.2	15.7	16.0	2000-2012: 4.5 (2.7;6.2)
<b>Prevalence</b>														
All	611.6	628.7	647.3	666.0	691.3	721.7	758.0	785.0	820.2	855.3	882.7	911.2	923.4	2000-2003: 2.8 (2.3;3.4) 2003-2009: 4.2 (4.0;4.5) 2009-2012: 2.7 (2.1;3.2)
Non-DN	461.5	473.9	487.3	500.5	517.0	533.9	555.7	570.8	591.4	613.1	627.2	641.2	642.4	2000-2003: 2.7 (2.2;3.2) 2003-2009: 3.4 (3.2;3.6) 2009-2012: 1.7 (1.3;2.2)
Unknown/ Missing	93.2	94.9	96.5	97.5	101.5	110.8	120.5	125.6	132.8	141.6	153.0	162.3	172.4	2000-2003: 1.4 (-0.6;3.4) 2003-2012: 6.5 (6.1;6.9) 2000-2009: 6.7 (6.3;7.0)
DN Both	56.9	60.0	63.5	68.0	72.8	77.0	81.9	88.6	96.0	100.7	102.5	107.6	108.6	2009-2012: 2.6 (0.9;4.3)
T1DN	32.5	32.3	32.6	32.6	33.4	34.6	35.7	36.2	37.2	36.8	38.0	38.6	37.4	2000-2003: 0.1 (-1.6;1.9) 2003-2007: 3.0 (1.2;4.8) 2006-2012: 0.6 (-0.1;1.4)
T2DN	24.4	27.7	30.9	35.4	39.4	42.4	46.1	52.4	58.7	63.9	64.5	69.1	71.3	2000-2008: 11.4 (10.6;12.3) 2008-2012: 4.8 (2.6;7.1)

Categories may not add up because of rounding off. Abbreviations: APC; annual percentage change; DN, diabetic nephropathy; T1DN, type 1 DN; T2DN, type 2 DN.

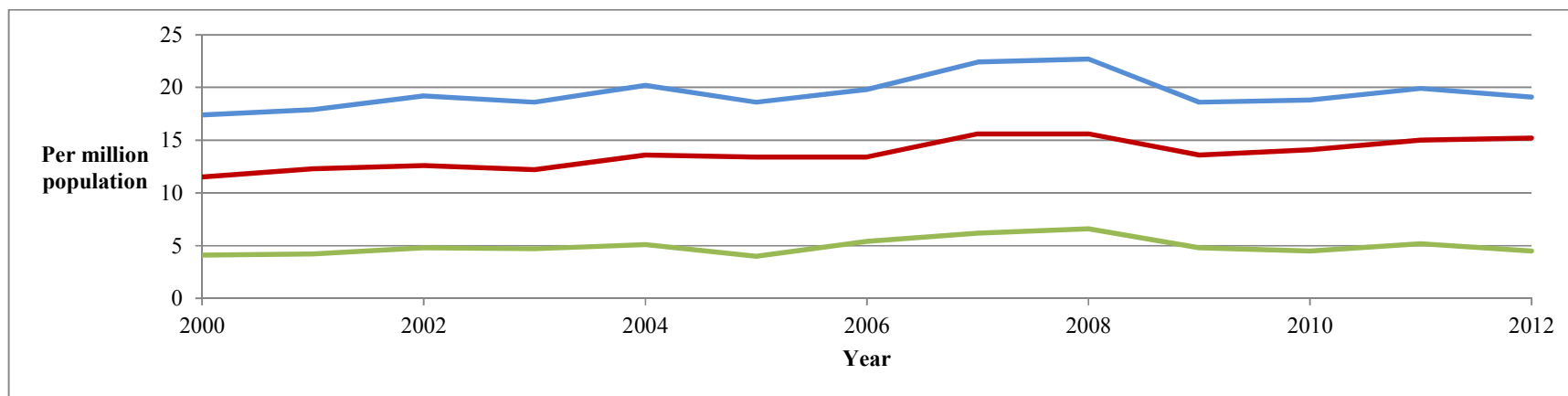
**Appendix 2.** Additional sensitivity analysis

**A.** Age and gender adjusted incidence of RRT for all causes, non-DN and DN (both T1DN and T2DN) for centres with <20% ( and ≥ 20% (green line) missing primary causes of RRT.

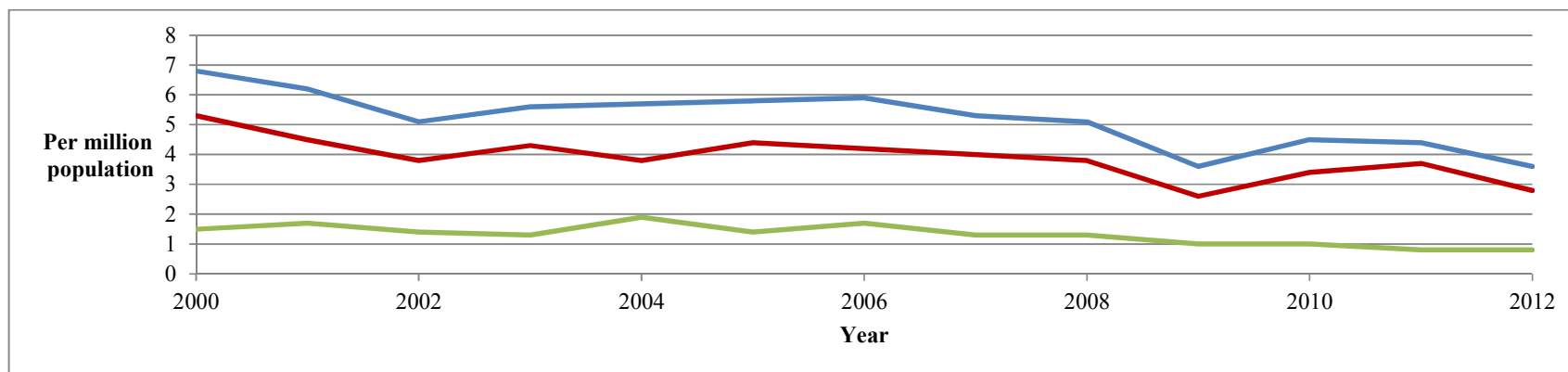
	Year													APC % (95% CI)
	2000	2001	2002	2003	2004	2005	2006	2007	2008	2009	2010	2011	2012	
<b>&lt;20% missing</b>														
All	65.0	68.0	69.4	69.0	72.8	74.7	75.5	79.6	82.7	79.7	78.7	79.5	81.0	2000-2008: 2.7 (2.2;3.2) 2008-2012: -0.4 (-1.8;1.0)
Non-DN	43.6	46.3	47.8	49.2	50.8	50.7	51.3	54.0	57.6	55.2	53.0	52.9	53.7	2000-2008: 2.9 (2.2;3.6) 2008-2012: -1.5 (-3.4;0.5)
Unknown/ Missing	9.9	9.5	8.9	7.5	8.7	10.5	10.8	9.8	9.5	11.0	11.7	11.6	12.2	2000-2012: 2.6 (0.9;4.2)
DN Both	11.5	12.3	12.6	12.2	13.6	13.4	13.4	15.6	15.6	13.6	14.1	15.0	15.2	2000-2012: 2.1 (1.2;3.1)
T1DN	5.3	4.5	3.8	4.3	3.8	4.4	4.2	4.0	3.8	2.6	3.4	3.7	2.8	2000-2012: -3.7 (-5.7;-1.7)
T2DN	6.2	7.9	8.8	7.9	9.8	9.0	9.2	11.7	11.8	11.0	10.7	11.3	12.4	2000-2012: 4.7 (3.1;6.3)
<b>≥20% missing</b>														
All	27.8	29.7	29.4	31.2	30.6	31.5	35.1	34.4	38.1	38.8	39.0	38.1	39.0	2000-2012: 3.1 (2.5;3.7)
Non-DN	14.4	16.8	16.3	18.9	17.1	16.7	17.7	16.7	18.1	22.0	18.2	18.4	17.8	2000-2012: 1.5 (0.2;2.9)
Unknown/ Missing	9.2	8.8	8.4	7.7	8.2	10.8	12.0	11.6	13.3	12.2	16.2	14.7	16.8	2000-2003: -3.1 (-16.0;11.9) 2003-2012: 8.5 (5.7;11.4)
DN Both	4.1	4.2	4.8	4.7	5.1	4.0	5.4	6.2	6.6	4.8	4.5	5.2	4.5	2000-2012: 1.3 (-1.1;3.8)
T1DN	1.5	1.7	1.4	1.3	1.9	1.4	1.7	1.3	1.3	1.0	1.0	0.8	0.8	2000-2006: 0.5 (-6.1;7.6) 2006-2012: -11.4 (-17.2;-5.2)
T2DN	2.6	2.4	3.4	3.5	3.2	2.6	3.7	4.8	5.2	3.9	3.4	4.4	3.6	2000-2012: 3.9 (0.7;7.1)

Categories may not add up because of rounding off. Abbreviations: APC; annual percentage change; DN, diabetic nephropathy; T1DN, type 1 DN; T2DN, type 2 DN.

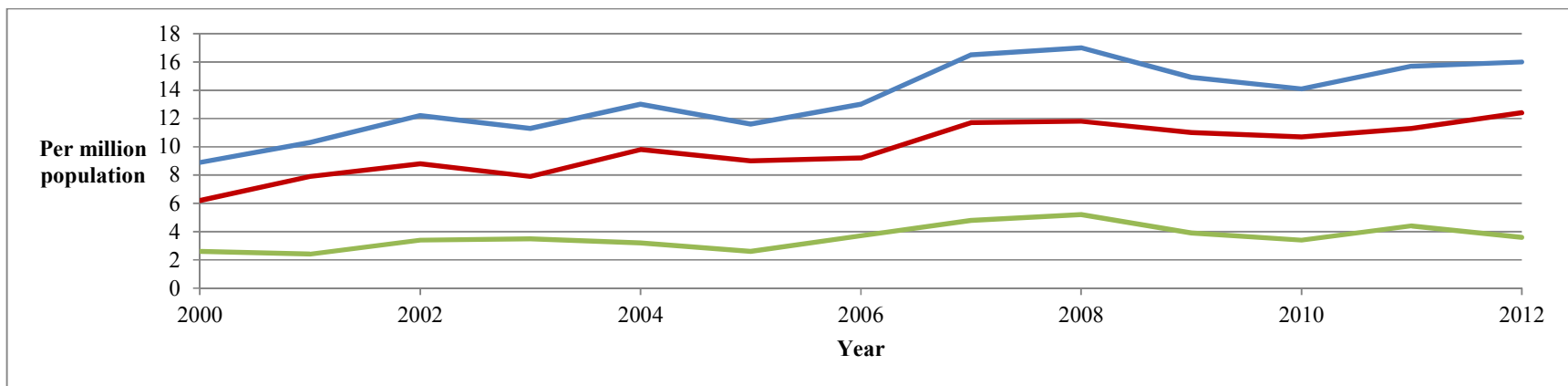
**B.** Visual representation of the course of the incidence of RRT for DN (both forms) for all centres (blue line) and centres with <20% (red line) or  $\geq 20\%$  (green line) missing primary causes of RRT.



C. Visual representation of the course of the incidence of RRT for T1DN comparing all centres (blue line) and centres with <20% (red line) or  $\geq 20\%$  (green line) missing primary causes of RRT.



D. Visual representation of the course of the incidence of RRT for T2DN comparing all centres (blue line) and centres with <20% (red line) or  $\geq 20\%$  (green line) missing primary causes of RRT.



### Appendix 3.

#### A. Contribution of each treatment modality (dialysis or Tx) to the adjusted incidence of RRT due to DN.

	Year													AAPC % (95% CI)
	2000	2001	2002	2003	2004	2005	2006	2007	2008	2009	2010	2011	2012	
<b>Dialysis</b>														
All	90.5	94.9	97.2	96.3	100.2	99.5	103.2	101.4	104.3	102.6	98.2	94.5	96.2	2000-2008: 1.5 (0.8;2.2) 2008-2012: -2.6 (-4.5;-0.6)
Non-DN	56.4	60.6	62.8	65.1	65.7	63.2	65.6	62.8	66.2	66.2	62.1	59.1	58.9	2000-2003: 4.4 (-0.1;9.1) 2003-2009: 0.0 (-2.0;2.0) 2009-2012: -3.7 (-7.8;0.7)
Unknown/ Missing	17.7	17.6	16.8	13.7	15.5	19.1	19.1	17.6	16.9	18.9	19.1	17.6	19.8	2000-2012: 1.2 (-0.3;2.8)
DN Both	16.5	16.7	17.5	17.5	18.9	17.1	18.4	21.1	21.2	17.4	17.0	17.9	17.5	2000-2012: 0.6 (-0.8;1.9)
T1DN	6.9	5.8	4.7	5.5	5.5	5.5	5.3	5.1	4.6	3.1	3.5	3.2	2.9	2000-2012: -6.1 (-8.1;-4.1)
T2DN	9.6	10.8	12.8	12.1	13.5	11.6	13.2	16.0	16.6	14.3	13.5	14.6	14.6	2000-2012: 3.1 (1.3;4.8)
<b>Haemodialysis</b>														
All	58.4	60.8	69.0	68.4	75.4	75.2	76.9	77.5	78.6	80.1	76.2	76.1	78.2	2000-2004: 6.9 (3.9;9.9) 2004-2012: 0.4 (-0.5;1.4)
Non-DN	36.1	37.6	43.4	45.2	49.3	47.0	47.5	46.9	49.3	50.9	47.5	47.9	47.4	2000-2004: 7.7 (4.4;11.2) 2004-2012: -0.1 (-1.2;1.0)
Unknown/ Missing	11.6	11.9	12.6	10.4	12.0	14.4	15.2	13.5	12.6	14.6	15.7	14.1	16.1	2000-2012: 2.6 (1.2;4.1)
DN Both	10.7	11.3	13.0	12.8	14.1	13.8	14.2	17.2	16.7	14.5	13.0	14.1	14.7	2000-2007: 5.7 (2.7;8.8) 2007-2012: -3.2 (-7.7;1.6)
T1DN	3.7	3.4	2.8	3.7	3.5	4.0	3.9	3.8	3.5	2.2	2.1	2.5	2.5	2000-2007: 2.5 (-3.2;8.4) 2007-2010: -19.3 (-47;22.9) 2010-2012: 12.6 (-26.1;71.5)
T2DN	7.1	7.9	10.2	9.0	10.6	9.8	10.3	13.3	13.2	12.4	10.9	11.6	12.2	2000-2012: 4.0 (2.0;6.0)
<b>Peritoneal dialysis</b>														

All	32.1	34.1	28.2	28.0	24.7	24.2	26.3	23.9	25.7	22.5	22.0	18.5	18.0	2000-2012: -4.4 (-5.5;-3.2)
Non-DN	20.2	22.9	19.4	19.9	16.5	16.3	18.1	15.9	16.9	15.3	14.6	11.2	11.5	2000-2012: -4.8 (-6.1;-3.3)
Unknown/ Missing	6.1	5.8	4.2	3.3	3.5	4.6	3.9	4.1	4.3	4.4	3.4	3.5	3.7	2000-2012: -2.8 (-5.4;-0.2)
DN Both	5.7	5.4	4.6	4.8	4.8	3.3	4.3	3.9	4.6	2.9	4.0	3.8	2.8	2000-2012: -4.3 (-6.5;-2)
T1DN	3.2	2.5	1.9	1.7	2.0	1.6	1.3	1.3	1.1	0.9	1.4	0.7	0.4	2000-2012: -12.1 (-15.3;-8.6)
T2DN	2.5	2.9	2.6	3.0	2.8	1.8	2.9	2.6	3.4	2.0	2.6	3.0	2.4	2000-2012: -0.3 (-3.2;2.7)
<b>Tx</b>														
All	4.6	3.5	3.9	4.4	4.6	6.4	7.7	8.3	10.8	11.4	13.1	12.9	14.3	2000-2002: -9.2 (-29.2;16.4) 2002-2008: 19.9 (13.4;26.7)
Non-DN	2.1	0.8	0.6	1.6	1.7	2.9	3.9	2.6	4.4	2.8	6.7	5.9	7.0	2000-2012: 18.1 (10.3;26.5)
Unknown/ Missing	0.0	0.0	0.0	0.1	0.1	0.1	0.0	0.1	0.1	0.1	0.2	0.1	0.2	-
DN Both	2.2	2.3	2.9	2.6	2.6	3.1	3.4	5.4	6.0	8.1	5.3	5.7	6.5	2000-2012: 11.1 (7.6;14.6)
T1DN	0.3	0.4	0.4	0.2	0.2	0.2	0.4	0.2	0.3	0.4	0.9	1.1	0.6	2000-2012: 8.8 (0.6;17.7)
T2DN	0.3	0.4	0.4	0.2	0.3	0.4	0.4	0.3	0.3	0.5	1.0	1.2	0.8	2000-2012: 10.1 (3.4;17.2)

Categories may not add up because of rounding off. Abbreviations: APC; annual percentage change; DN, diabetic nephropathy; T1DN, type 1 DN; T2DN, type 2 DN.

**B. Contribution of each treatment modality (dialysis or Tx) to the adjusted prevalence of RRT due to DN.**

	Year													AAPC % (95% CI)
	2000	2001	2002	2003	2004	2005	2006	2007	2008	2009	2010	2011	2012	
<b>Dialysis</b>														
All	333.6	334.4	343.9	348.1	353.3	361.9	375.9	375.0	383.5	393.8	390.9	384.9	378.2	2000-2009: 2 (1.7;2.2) 2009-2012: -1.1 (-2.4;0.2)
Non-DN	228.4	230.9	237.8	241.2	242.7	245.4	254.6	250.4	253.6	259.0	256.1	250.1	244.2	2000-2009: 1.4 (1.1;1.7) 2009-2012: -2 (-3.6;-0.3)
Unknown/ Missing	62.2	59.3	58.7	55.2	55.4	59.8	61.8	62.0	62.5	66.3	68.3	67.4	68.5	2000-2003: -3.4 (-7;0.3) 2003-2012: 2.5 (1.8;3.2)
DN Both	42.9	44.2	47.5	51.7	55.2	56.7	59.5	62.6	67.4	68.6	66.5	67.5	65.5	2000-2008: 5.9 (5.2;6.6) 2008-2012: -0.5 (-2.3;1.4)
T1DN	17.7	16.5	16.2	16.0	16.6	16.5	16.5	15.4	15.6	14.7	14.9	14.1	12.4	2000-2010: -1.3 (-2.1;-0.5) 2010-2012: -8.6 (-17.4;1.3)
T2DN	25.2	27.7	31.3	35.7	38.7	40.3	43.1	47.2	51.8	53.9	51.6	53.4	53.1	2000-2003: 12.5 (8.9;16.3) 2003-2009: 7.2 (5.6;8.8) 2009-2012: -0.7 (-3.9;2.6)
<b>Haemodialysis</b>														
All	236.1	233.1	244.9	252.5	266.0	276.5	292.1	295.8	308.1	322.3	322.2	325.1	321.5	2000-2009: 3.8 (3.3;4.3) 2009-2012: 0.2 (-2.4;2.9)
Non-DN	160.7	159.6	167.5	172.3	180.3	185.5	195.6	194.5	202.0	210.8	210.0	210.2	206.9	2000-2009: 3.3 (2.8;3.7) 2009-2012: -0.4 (-2.7;2)
Unknown/ Missing	44.4	41.7	42.3	41.1	42.8	46.1	48.7	49.3	49.8	53.2	56.0	56.6	57.6	2000-2003: -1.3 (-4.9;2.5) 2003-2012: 3.9 (3.2;4.6)
DN Both	31.0	31.9	35.1	39.1	42.8	44.9	47.8	51.9	56.4	58.3	56.3	58.4	57.1	2000-2008: 8.1 (7.2;8.9) 2008-2012: 0.4 (-1.8;2.7)
T1DN	11.3	10.6	10.7	11.0	11.6	11.7	12.7	12.6	12.7	11.9	11.5	11.5	10.3	2000-2008: 2.3 (0.9;3.7) 2008-2012: -4.6 (-8.3;-0.8)
T2DN	19.6	21.3	24.4	28.1	31.2	33.2	35.2	39.3	43.7	46.4	44.8	46.9	46.7	2000-2008: 10.5 (9.3;11.8) 2008-2012: 1.4 (-1.9;4.9)
<b>Peritoneal dialysis</b>														
All	97.5	101.2	99.0	95.6	87.4	85.3	83.8	79.2	75.4	71.6	68.7	59.8	56.6	2000-2002: 0.3 (-6;7) 2002-2010: -4.6 (-5.4;-3.7)



														2010-2012: -9.6 (-15.3;-3.6)
Non-DN	67.7	71.3	70.3	68.9	62.4	59.8	58.9	55.9	51.6	48.2	46.1	39.9	37.3	2000-2002: 2.3 (-5.9;11.3) 2002-2010: -5.4 (-6.4;-4.3) 2010-2012: -10.7 (-17.9;-2.8)
Unknown/ Missing	17.8	17.6	16.3	14.2	12.5	13.7	13.1	12.6	12.7	13.1	12.3	10.8	10.9	2000-2012: -3.7 (-4.7;-2.6)
DN Both	12.0	12.3	12.3	12.5	12.4	11.8	11.7	10.6	11.0	10.3	10.3	9.1	8.4	2000-2003: 1.5 (-3.1;6.4) 2003-2010: -3.1 (-4.6;-1.5) 2010-2012: -9.1 (-17.3;-0.2)
T1DN	6.4	5.9	5.5	5.0	5.0	4.7	3.8	2.7	3.0	2.8	3.5	2.6	2.0	2000-2012: -8.5 (-10.4;-6.6)
T2DN	5.6	6.4	6.8	7.6	7.4	7.1	7.9	7.9	8.1	7.5	6.8	6.4	6.4	2000-2007: 4.5 (2.1;7) 2007-2012: -5.4 (-9.1;-1.6)
<b>Tx</b>														
All	316.6	321.3	337.3	349.4	366.3	384.2	402.2	423.0	443.0	460.2	480.2	498.6	521.0	2000-2012: 4.4 (4.3;4.6)
Non-DN	259.3	260.9	272.2	280.1	292.9	303.9	313.3	327.7	340.6	351.4	361.2	370.3	380.6	2000-2009: 3.6 (3.4;3.9) 2009-2012: 2.8 (1.2;4.3)
Unknown/ Missing	38.9	41.3	44.9	48.7	51.9	56.5	63.7	67.4	73.0	76.9	84.6	92.1	101.4	2000-2012: 8.3 (8.1;8.6)
DN Both	18.3	19.0	20.2	20.6	21.4	23.8	25.2	28.0	29.4	31.9	34.4	36.2	39.0	2000-2004: 4.6 (3.3;5.9) 2004-2012: 7.7 (7.2;8.1)
T1DN	15.7	16.1	16.9	17.0	17.0	18.1	19.0	20.4	20.7	21.0	21.8	22.5	23.5	2000-2012: 3.5 (3.2;3.8)
T2DN	2.6	2.9	3.2	3.7	4.4	5.7	6.3	7.5	8.7	10.8	12.5	13.7	15.5	2000-2002: 10.7 (-2.7;26) 2002-2010: 18.7 (16.6;20.7) 2010-2012: 10.7 (-2.7;26)

Categories may not add up because of rounding off. Abbreviations: APC; annual percentage change; DN, diabetic nephropathy; T1DN, type 1 DN; T2DN, type 2 DN.

#### Appendix 4.

A. Patient survival probabilities and crude hazard ratios (HR) and age and gender adjusted HRs of patients starting RRT, subdivided into haemo- and peritoneal dialysis in the period 2000-2010.

		<b>Adjusted 1 year survival (95% CI)</b>	<b>Adjusted 5 year survival (95% CI)</b>	<b>Unadjusted 5 year survival (95% CI)</b>	<b>Crude HR (95%CI)</b>	<b>Adjusted HR (95% CI)</b>
<b>Survival on haemodialysis</b>	No DN	86.6 (85.9 - 87.4)	50.9 (49.5 - 52.5)	39.8 (39.3 - 40.3)	1 (ref)	1 (ref)
	DN both	85.7 (84.4 - 87.0)	42.9 (40.7 - 45.3)	34.0 (33.2 - 34.7)	1.13 (1.07 - 1.20)	1.22 (1.15 - 1.29)
	T1DN	83.1 (80.2 - 86.2)	34.0 (29.8 - 38.8)	32.7 (31.3 - 34.1)	1.17 (1.06 - 1.30)	1.55 (1.40 - 1.72)
	T2DN	86.5 (85.1 - 87.9)	45.6 (43.0 - 48.3)	34.4 (33.5 - 35.2)	1.12 (1.05 - 1.19)	1.13 (1.06 - 1.21)
<b>Survival on peritoneal dialysis</b>	No DN	93.6 (92.6 - 94.6)	61.4 (58.8 - 64.0)	59.7 (58.3 - 61.1)	1 (ref)	1 (ref)
	DN both	88.9 (86.6 - 91.2)	42.3 (37.9 - 47.1)	38.9 (37.2 - 40.6)	1.88 (1.67 - 2.12)	1.84 (1.63 - 2.08)
	T1DN	83.0 (78.0 - 88.3)	32.0 (25.1 - 40.8)	41.0 (38.0 - 44.0)	1.94 (1.61 - 2.32)	2.53 (2.10 - 3.04)
	T2DN	91.3 (88.9 - 93.8)	46.8 (41.6 - 52.7)	37.8 (35.7 - 39.8)	1.86 (1.61 - 2.14)	1.61 (1.39 - 1.85)

Categories may not add up because of rounding off. Abbreviations: CI, confidence interval; DN, diabetic nephropathy; HR, hazard ratios; T1DN, type 1 DN; T2DN, type 2 DN.

**B.** Age and gender adjusted hazard ratios (HR) of patients starting RRT in 2005-2009 when compared to 2000-2004. Subdivided into RRT (both dialysis and kidney transplantation), dialysis (both haemo- and peritoneal dialysis) haemodialysis, peritoneal dialysis and kidney transplantation.

	<b>Survival on RRT</b> Adjusted HR (95% CI)	<b>Survival on dialysis</b> Adjusted HR (95% CI)	<b>Survival on haemodialysis</b> Adjusted HR (95% CI)	<b>Survival on peritoneal dialysis</b> Adjusted HR (95% CI)	<b>Survival after kidney transplantation</b> Adjusted HR (95% CI)
All	0.78 (0.74 - 0.81)	0.80 (0.77 - 0.84)	0.81 (0.77 - 0.85)	0.77 (0.69 - 0.86)	0.91 (0.78 - 1.06)
Non-DN	0.80 (0.75 - 0.84)	0.82 (0.77 - 0.87)	0.83 (0.78 - 0.89)	0.75 (0.64 - 0.86)	0.98 (0.82 - 1.18)
Unknown/ Missing	0.74 (0.67 - 0.82)	0.78 (0.71 - 0.87)	0.76 (0.68 - 0.86)	0.90 (0.71 - 1.16)	0.99 (0.67 - 1.47)
DN Both	0.76 (0.69 - 0.84)	0.77 (0.70 - 0.85)	0.79 (0.71 - 0.89)	0.70 (0.57 - 0.87)	0.77 (0.54 - 1.10)
T1DN	0.75 (0.62 - 0.90)	0.77 (0.64 - 0.93)	0.74 (0.59 - 0.93)	0.86 (0.60 - 1.25)	0.59 (0.34 - 1.01)
T2DN	0.77 (0.69 - 0.87)	0.79 (0.70 - 0.88)	0.82 (0.72 - 0.94)	0.66 (0.50 - 0.86)	0.92 (0.57 - 1.50)

Categories may not add up because of rounding off. Dialysis is defined as both peritoneal- or haemodialysis. Abbreviations: CI. confidence interval; DN, diabetic nephropathy; T1DN, type 1 DN; T2DN, type 2 DN; Tx. kidney transplantation.

C. Graft survival probabilities and crude hazard ratios (HR) and age and gender adjusted HRs of patients having a renal transplantation in the period 2000-2010.

		<b>Adjusted 1 year survival (95% CI)</b>	<b>Adjusted 5 year survival (95% CI)</b>	<b>Unadjusted 5 year survival (95% CI)</b>	<b>Crude HR (95%CI)</b>	<b>Adjusted HR (95% CI)</b>
<b>Graft survival</b>	No DN	90.6 (89.8 - 91.5)	77.0 (75.7 - 78.3)	75.8 (74.8 - 76.8)	1 (ref)	1 (ref)
	DN both	86.7 (84.1 - 89.4)	68.8 (65.1 - 72.8)	65.6 (62.9 - 68.2)	1.53 (1.33 - 1.75)	1.43 (1.25 - 1.64)
	T1DN	90.7 (87.5 - 93.9)	74.7 (69.9 - 79.7)	74.1 (70.2 - 77.6)	1.11 (0.92 - 1.34)	1.14 (0.95 - 1.38)
	T2DN	82.4 (78.1 - 86.8)	62.1 (56.4 - 68.4)	54.4 (50.8 - 57.9)	2.28 (1.91 - 2.73)	1.85 (1.54 - 2.22)

Categories may not add up because of rounding off. Abbreviations: CI, confidence interval; DN, diabetic nephropathy; HR, hazard ratios; T1DN, type 1 DN; T2DN, type 2 DN.