

Weaning Phase

DEFINITION:

When weaning from sedative and analgesic agents is required.
Eg. Imminent PICU discharge, no longer ventilated.

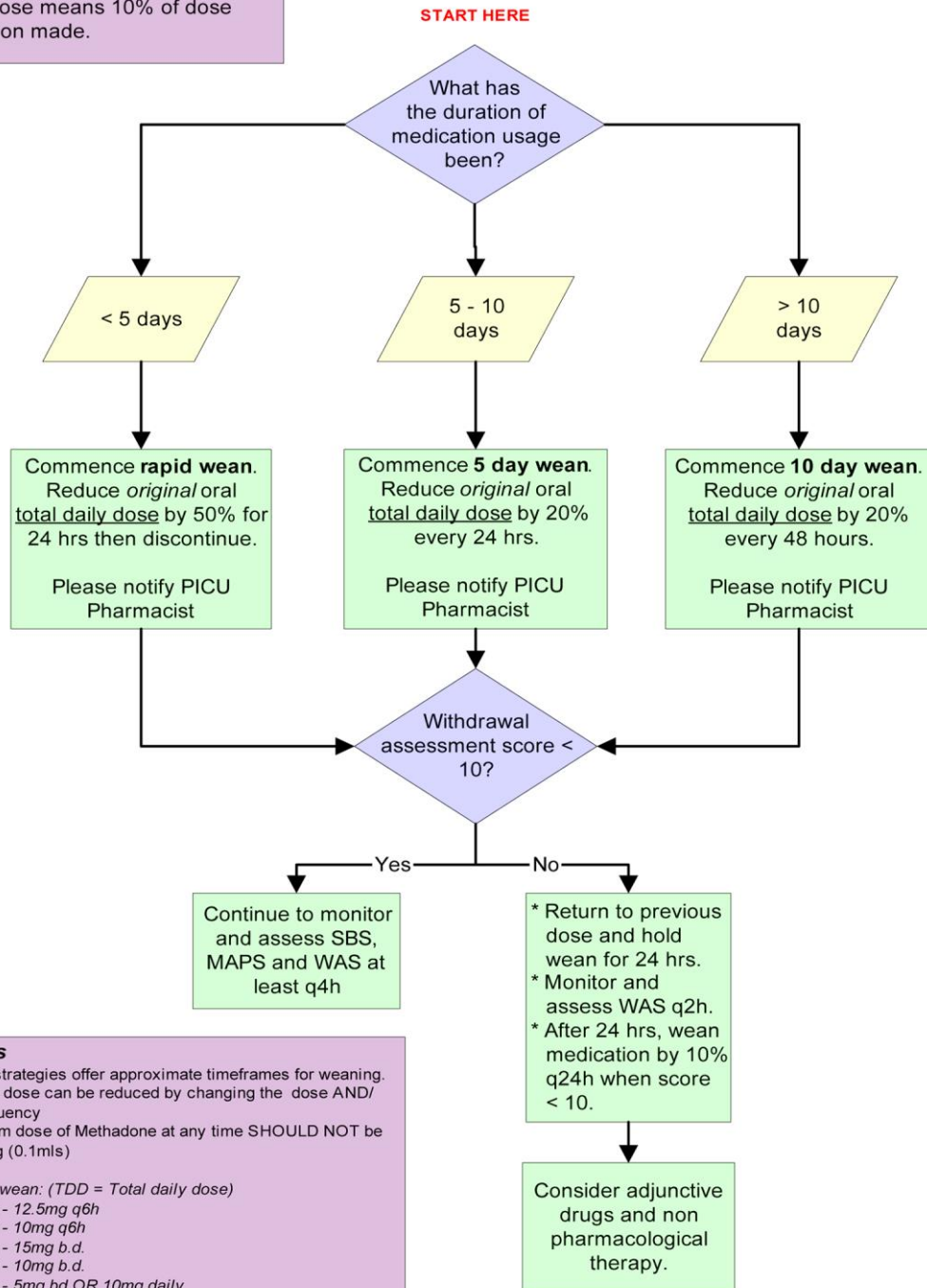
GOALS:

Sedation: SBS 0 to +3

Pain: MAPS 0 to 3

Withdrawal: <10

10% of original dose means 10% of dose when first reduction made.



Weaning Tips

- The above strategies offer approximate timeframes for weaning.
- A total daily dose can be reduced by changing the dose AND/OR the frequency
- The minimum dose of Methadone at any time SHOULD NOT be below 0.5mg (0.1mls)

Example of 5 day wean: (TDD = Total daily dose)

Day 1: TDD 50mg - 12.5mg q6h

Day 2: TDD 40mg - 10mg q6h

Day 3: TDD 30mg - 15mg b.d.

Day 4: TDD 20mg - 10mg b.d.

Day 5: TDD 10mg - 5mg bd OR 10mg daily